

Acta Crystallographica Section E

## Structure Reports

Online

ISSN 1600-5368

## (2E)-2-[2-(Cyclohexylcarbamothioyl)-hydrazinyldene]propanoic acid

 Md. Abu Affan,<sup>a,‡</sup> Md. Abdus Salam,<sup>a</sup> Fasihuddin B. Ahmad,<sup>a</sup> Seik Weng Ng<sup>b</sup> and Edward R. T. Tiekink<sup>b\*</sup>
<sup>a</sup>Faculty of Resource Science and Technology, Universiti Malaysia Sarawak, 94300 Kota Samarahan, Sarawak, Malaysia, and <sup>b</sup>Department of Chemistry, University of Malaya, 50603 Kuala Lumpur, Malaysia

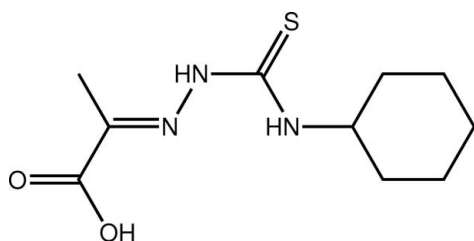
Correspondence e-mail: edward.tiekink@gmail.com

Received 16 April 2011; accepted 18 April 2011

 Key indicators: single-crystal X-ray study;  $T = 100$  K; mean  $\sigma(\text{C}-\text{C}) = 0.003$  Å;  $R$  factor = 0.041;  $wR$  factor = 0.143; data-to-parameter ratio = 17.2.

In the title thiourea derivative,  $\text{C}_{10}\text{H}_{17}\text{N}_3\text{O}_2\text{S}$ , the carboxyl group and the least-squares plane through the cyclohexyl ring are twisted out of the plane through the central  $\text{CN}_3\text{S}$  residue; the respective dihedral angles are  $7.18$  (8) and  $62.29$  (4)°. The conformation about the azomethine bond [ $1.275$  (2) Å] is *E*. The NH groups are *anti*, with one forming an intramolecular  $\text{N}-\text{H}\cdots\text{N}$  hydrogen bond. The main feature of the crystal structure is the formation of linear supramolecular chains along [110] mediated by alternating pairs of  $\text{O}-\text{H}\cdots\text{O}$  and pairs of  $\text{N}-\text{H}\cdots\text{S}$  hydrogen bonds.

### Related literature

 For related thiourea structures, see: Normaya *et al.* (2011); Salam *et al.* (2011).


### Experimental

#### Crystal data

 $\text{C}_{10}\text{H}_{17}\text{N}_3\text{O}_2\text{S}$   
 $M_r = 243.33$   
 Monoclinic,  $P2_1/n$   
 $a = 8.9204$  (2) Å  
 $b = 6.0350$  (2) Å  
 $c = 22.4750$  (6) Å  
 $\beta = 90.051$  (3)°

 $V = 1209.93$  (6) Å<sup>3</sup>  
 $Z = 4$   
 Mo  $K\alpha$  radiation  
 $\mu = 0.26$  mm<sup>-1</sup>  
 $T = 100$  K  
 $0.30 \times 0.20 \times 0.10$  mm

#### Data collection

 Agilent Supernova Dual diffractometer with an Atlas detector  
 Absorption correction: multi-scan (*CrysAlis PRO*; Agilent, 2010)  
 $T_{\min} = 0.687$ ,  $T_{\max} = 1.000$ 

 7394 measured reflections  
 2273 independent reflections  
 2251 reflections with  $I > 2\sigma(I)$   
 $R_{\text{int}} = 0.036$ 

#### Refinement

 $R[F^2 > 2\sigma(F^2)] = 0.041$   
 $wR(F^2) = 0.143$   
 $S = 0.98$   
 2723 reflections  
 158 parameters  
 3 restraints

 H atoms treated by a mixture of independent and constrained refinement  
 $\Delta\rho_{\text{max}} = 0.36$  e Å<sup>-3</sup>  
 $\Delta\rho_{\text{min}} = -0.32$  e Å<sup>-3</sup>
**Table 1**

Hydrogen-bond geometry (Å, °).

$D-\text{H}\cdots A$	$D-\text{H}$	$\text{H}\cdots A$	$D\cdots A$	$D-\text{H}\cdots A$
$\text{N3}-\text{H3}\cdots\text{N1}$	0.87 (1)	2.20 (2)	2.574 (2)	106 (2)
$\text{O1}-\text{H1}\cdots\text{O2}^{\text{i}}$	0.85 (1)	1.80 (1)	2.6416 (17)	172 (3)
$\text{N2}-\text{H2}\cdots\text{S1}^{\text{ii}}$	0.89 (1)	2.65 (1)	3.5384 (15)	176 (2)

 Symmetry codes: (i)  $-x + 1, -y + 1, -z + 1$ ; (ii)  $-x + 2, -y + 3, -z + 1$ .

Data collection: *CrysAlis PRO* (Agilent, 2010); cell refinement: *CrysAlis PRO*; data reduction: *CrysAlis PRO*; program(s) used to solve structure: *SHELXS97* (Sheldrick, 2008); program(s) used to refine structure: *SHELXL97* (Sheldrick, 2008); molecular graphics: *ORTEP-3* (Farrugia, 1997) and *DIAMOND* (Brandenburg, 2006); software used to prepare material for publication: *PUBLICIF* (Westrip, 2010).

This work was supported financially by the Ministry of Science, Technology and Innovation (MOSTI) under a research grant (No. 06-01-09-SF0046). The authors thank Universiti Malaysia Sarawak (UNIMAS) for the facilities to carry out the research work. The authors also thank the University of Malaya for support of the crystallographic facility.

Supplementary data and figures for this paper are available from the IUCr electronic archives (Reference: HB5851).

### References

- Agilent (2010). *CrysAlis PRO*. Agilent Technologies, Yarnton, Oxfordshire, England.  
 Brandenburg, K. (2006). *DIAMOND*. Crystal Impact GbR, Bonn, Germany.  
 Farrugia, L. J. (1997). *J. Appl. Cryst.* **30**, 565.  
 Normaya, E., Farina, Y., Halim, S. N. A. & Tiekink, E. R. T. (2011). *Acta Cryst. E67*, o943–o944.  
 Salam, M. A., Affan, M. A., Ahmad, F. B., Ng, S. W. & Tiekink, E. R. T. (2011). *Acta Cryst. E67*, o955.  
 Sheldrick, G. M. (2008). *Acta Cryst. A64*, 112–122.  
 Westrip, S. P. (2010). *J. Appl. Cryst.* **43**, 920–925.

<sup>‡</sup> Additional correspondence author, e-mail: maaffan@yahoo.com.

## supporting information

*Acta Cryst.* (2011). E67, o1193 [doi:10.1107/S1600536811014449]

**(2E)-2-[2-(Cyclohexylcarbamothioyl)hydrazinylidene]propanoic acid**

Md. Abu Affan, Md. Abdus Salam, Fasihuddin B. Ahmad, Seik Weng Ng and Edward R. T. Tiekink

**S1. Comment**

In continuation of structural investigations into conformation and hydrogen bonding in thiourea derivatives (Normaya *et al.* 2011; Salam *et al.*, 2011), the title compound, (I), was investigated.

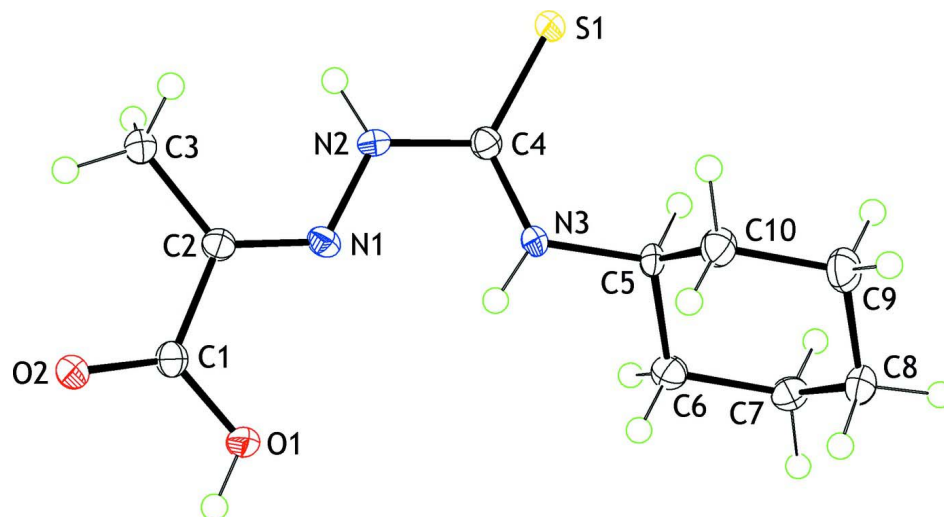
The central CN<sub>3</sub>S chromophore in (I), Fig. 1, is planar (r.m.s. = 0.0039 Å). The carboxylate residue is slightly twisted out this plane (dihedral angle = 7.18 (8) °), and, by contrast, the least-squares plane through the cyclohexyl group (which has the conformation of a chair) is twisted significantly out of the central plane (dihedral angle = 62.29 (4) °). The H atoms of the NH groups are *anti*, and the conformation about the azomethine bond [1.275 (2) Å] is *E*. The N3—H forms an intramolecular hydrogen bond with the imino-N3 atom, Table 1. Finally, the thione and carboxylic acid groups lie to opposite sides of the molecule. This arrangements enables the formation of linear supramolecular chains *via* hydrogen bonds along [110] in the crystal packing, Fig. 2 and Table 1. The carboxylic acid residues self-associate *via* a centrosymmetric eight-membered {···HOC=O}<sub>2</sub> synthon. Similarly, the thiourea entity with the NH atom not involved in the intramolecular N—H···N interaction, self-associates *via* a centrosymmetric eight-membered {···HNC=S}<sub>2</sub> synthon. Chains lie in the *ab* plane with the cyclohexyl rings inter-digitating along the *c* axis, Fig. 3.

**S2. Experimental**

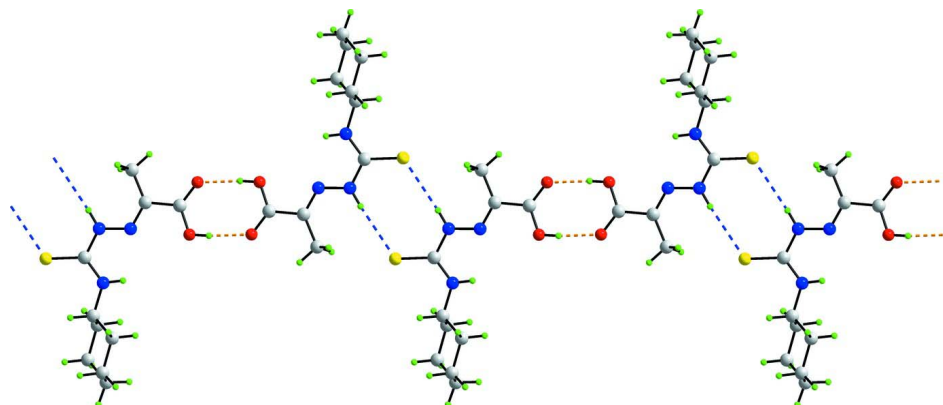
Cyclohexylisothiocyanate (0.706 g, 5 mmol) and hydrazine hydrate (0.250 g, 5 mmol), each dissolved in 10 ml ethanol were mixed with constant stirring. The stirring was continued for 30 min and the white product that formed, *N*(4)-cyclohexylthiosemicarbazide, was washed with ethanol and dried *in vacuo*. A solution of this (0.51 g, 3 mmol) in 10 ml methanol was refluxed with a methanolic solution of pyruvic acid (0.261 g, 3 mmol) for 5 h after the addition of 1–2 drops of glacial acetic acid. On cooling the solution to room temperature, white precipitate separated, which were filtered and washed with methanol. The white precipitate was recrystallized from methanol to yield colourless prisms and dried *in vacuo* over silica gel. (*M.pt.* 465–467 K. Yield 0.621 g (80%). Anal. Found: C, 49.31; H, 7.01; N, 17.18%. C<sub>10</sub>H<sub>17</sub>N<sub>3</sub>O<sub>2</sub>S requires: C, 49.36; H, 7.04; N, 17.26%. FT—IR (KBr, cm<sup>-1</sup>)  $\nu_{\max}$ : 3322 (m, OH), 3197 (s, NH), 2922, 2851 (s, cyclohexyl), 1692 (m, C=O), 1619 (w, C=N), 980 (m, N—N), 1249, 873 (w, C=S).

**S3. Refinement**

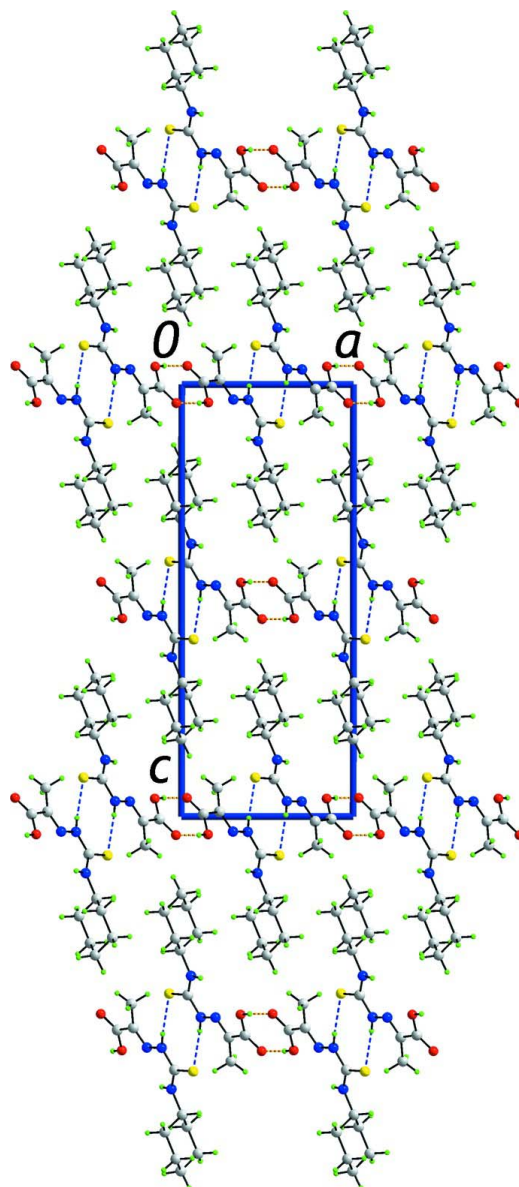
Carbon-bound H-atoms were placed in calculated positions (C—H = 0.98 to 1.00 Å) and were included in the refinement in the riding model approximation, with  $U_{\text{iso}}(\text{H})$  set to 1.2–1.5 $U_{\text{eq}}(\text{C})$ . The O- and N-bound H-atoms were located in a difference Fourier map and were refined with distance restraints of O—H = 0.84±0.01 Å and N—H 0.88±0.01 Å, and with  $U_{\text{iso}}(\text{H}) = yU_{\text{eq}}(\text{N})$  for  $y = 1.5$  (O) and 1.2 (N).

**Figure 1**

The molecular structure of (I) showing displacement ellipsoids at the 50% probability level.

**Figure 2**

A view of the supramolecular chain aligned along [110] in (I). The O—H...O and N—H...S hydrogen bonds are shown as orange and blue dashed lines, respectively.



**Figure 3**

A view in projection down the  $b$  axis of the crystal packing in (I) showing the inter-digitation of the cyclohexyl rings along the  $c$  direction. The O—H...O and N—H...S hydrogen bonds are shown as orange and blue dashed lines, respectively.

**(2E)-2-[2-(Cyclohexylcarbamothioyl)hydrazinylidene]propanoic acid**

*Crystal data*

$C_{10}H_{17}N_3O_2S$

$M_r = 243.33$

Monoclinic,  $P2_1/n$

Hall symbol:  $-P 2_1/n$

$a = 8.9204 (2) \text{ \AA}$

$b = 6.0350 (2) \text{ \AA}$

$c = 22.4750 (6) \text{ \AA}$

$\beta = 90.051 (3)^\circ$

$V = 1209.93 (6) \text{ \AA}^3$

$Z = 4$

$F(000) = 520$

$D_x = 1.336 \text{ Mg m}^{-3}$

Mo  $K\alpha$  radiation,  $\lambda = 0.71073 \text{ \AA}$

Cell parameters from 3312 reflections

$\theta = 2.3\text{--}29.1^\circ$   
 $\mu = 0.26\text{ mm}^{-1}$   
 $T = 100\text{ K}$

Prism, colourless  
 $0.30 \times 0.20 \times 0.10\text{ mm}$

*Data collection*

Agilent Supernova Dual  
 diffractometer with an Atlas detector  
 Radiation source: SuperNova (Mo) X-ray  
 Source  
 Mirror monochromator  
 Detector resolution:  $10.4041\text{ pixels mm}^{-1}$   
 $\omega$  scans  
 Absorption correction: multi-scan  
 (CrysAlis PRO; Agilent, 2010)

$T_{\min} = 0.687$ ,  $T_{\max} = 1.000$   
 7394 measured reflections  
 2723 independent reflections  
 2251 reflections with  $I > 2\sigma(I)$   
 $R_{\text{int}} = 0.036$   
 $\theta_{\max} = 27.5^\circ$ ,  $\theta_{\min} = 2.5^\circ$   
 $h = -11 \rightarrow 11$   
 $k = -6 \rightarrow 7$   
 $l = -29 \rightarrow 29$

*Refinement*

Refinement on  $F^2$   
 Least-squares matrix: full  
 $R[F^2 > 2\sigma(F^2)] = 0.041$   
 $wR(F^2) = 0.143$   
 $S = 0.98$   
 2723 reflections  
 158 parameters  
 3 restraints  
 Primary atom site location: structure-invariant  
 direct methods

Secondary atom site location: difference Fourier  
 map  
 Hydrogen site location: inferred from  
 neighbouring sites  
 H atoms treated by a mixture of independent  
 and constrained refinement  
 $w = 1/[\sigma^2(F_o^2) + (0.1P)^2]$   
 where  $P = (F_o^2 + 2F_c^2)/3$   
 $(\Delta/\sigma)_{\max} = 0.001$   
 $\Delta\rho_{\max} = 0.36\text{ e \AA}^{-3}$   
 $\Delta\rho_{\min} = -0.32\text{ e \AA}^{-3}$

*Special details*

**Geometry.** All e.s.d.'s (except the e.s.d. in the dihedral angle between two l.s. planes) are estimated using the full covariance matrix. The cell e.s.d.'s are taken into account individually in the estimation of e.s.d.'s in distances, angles and torsion angles; correlations between e.s.d.'s in cell parameters are only used when they are defined by crystal symmetry. An approximate (isotropic) treatment of cell e.s.d.'s is used for estimating e.s.d.'s involving l.s. planes.

**Refinement.** Refinement of  $F^2$  against ALL reflections. The weighted  $R$ -factor  $wR$  and goodness of fit  $S$  are based on  $F^2$ , conventional  $R$ -factors  $R$  are based on  $F$ , with  $F$  set to zero for negative  $F^2$ . The threshold expression of  $F^2 > \sigma(F^2)$  is used only for calculating  $R$ -factors(gt) *etc.* and is not relevant to the choice of reflections for refinement.  $R$ -factors based on  $F^2$  are statistically about twice as large as those based on  $F$ , and  $R$ -factors based on ALL data will be even larger.

*Fractional atomic coordinates and isotropic or equivalent isotropic displacement parameters ( $\text{\AA}^2$ )*

	<i>x</i>	<i>y</i>	<i>z</i>	$U_{\text{iso}}^*/U_{\text{eq}}$
S1	1.07001 (5)	1.46426 (7)	0.59008 (2)	0.01940 (18)
O1	0.65476 (14)	0.6300 (2)	0.54143 (6)	0.0209 (3)
O2	0.53180 (13)	0.7099 (2)	0.45694 (6)	0.0196 (3)
N1	0.80028 (16)	1.0010 (2)	0.53480 (7)	0.0156 (3)
N2	0.88614 (16)	1.1878 (2)	0.53543 (7)	0.0170 (3)
N3	0.94326 (16)	1.0938 (3)	0.63114 (7)	0.0169 (3)
C1	0.62814 (18)	0.7522 (3)	0.49413 (8)	0.0164 (4)
C2	0.72145 (19)	0.9564 (3)	0.48899 (8)	0.0162 (4)
C3	0.7098 (2)	1.0904 (3)	0.43363 (8)	0.0211 (4)
H3A	0.6904	1.2455	0.4440	0.032*
H3B	0.6273	1.0339	0.4091	0.032*
H3C	0.8039	1.0800	0.4113	0.032*

C4	0.96146 (18)	1.2376 (3)	0.58689 (8)	0.0156 (4)
C5	1.00682 (18)	1.1176 (3)	0.69060 (7)	0.0157 (4)
H5	1.1055	1.1951	0.6871	0.019*
C6	1.0336 (2)	0.8900 (3)	0.71759 (9)	0.0210 (4)
H6A	1.1037	0.8054	0.6921	0.025*
H6B	0.9377	0.8076	0.7194	0.025*
C7	1.0991 (2)	0.9113 (3)	0.78024 (8)	0.0221 (4)
H7A	1.1116	0.7618	0.7977	0.026*
H7B	1.1994	0.9811	0.7779	0.026*
C8	0.9984 (2)	1.0501 (3)	0.82063 (9)	0.0235 (4)
H8A	0.9019	0.9725	0.8267	0.028*
H8B	1.0471	1.0689	0.8599	0.028*
C9	0.9696 (2)	1.2771 (3)	0.79289 (9)	0.0250 (4)
H9A	0.8988	1.3610	0.8182	0.030*
H9B	1.0648	1.3611	0.7912	0.030*
C10	0.9048 (2)	1.2561 (3)	0.73033 (8)	0.0212 (4)
H10A	0.8046	1.1858	0.7325	0.025*
H10B	0.8924	1.4055	0.7128	0.025*
H1	0.602 (2)	0.514 (3)	0.5431 (12)	0.040 (7)*
H2	0.892 (2)	1.275 (3)	0.5035 (6)	0.026 (6)*
H3	0.888 (2)	0.976 (2)	0.6260 (11)	0.029 (6)*

*Atomic displacement parameters (Å<sup>2</sup>)*

	$U^{11}$	$U^{22}$	$U^{33}$	$U^{12}$	$U^{13}$	$U^{23}$
S1	0.0251 (3)	0.0177 (3)	0.0154 (3)	−0.00825 (16)	−0.0030 (2)	0.00088 (18)
O1	0.0233 (6)	0.0208 (7)	0.0185 (7)	−0.0089 (5)	−0.0048 (5)	0.0055 (6)
O2	0.0200 (6)	0.0205 (7)	0.0182 (7)	−0.0064 (5)	−0.0030 (5)	0.0018 (5)
N1	0.0148 (7)	0.0144 (7)	0.0178 (8)	−0.0030 (5)	0.0009 (6)	−0.0010 (6)
N2	0.0214 (7)	0.0140 (7)	0.0157 (8)	−0.0039 (6)	−0.0007 (6)	0.0036 (6)
N3	0.0196 (7)	0.0172 (7)	0.0140 (8)	−0.0068 (6)	−0.0047 (6)	0.0006 (6)
C1	0.0159 (8)	0.0178 (9)	0.0155 (9)	0.0010 (7)	0.0000 (7)	−0.0017 (7)
C2	0.0153 (8)	0.0168 (9)	0.0166 (9)	−0.0015 (6)	0.0005 (7)	0.0006 (7)
C3	0.0247 (9)	0.0215 (9)	0.0169 (9)	−0.0069 (7)	−0.0040 (7)	0.0022 (8)
C4	0.0154 (8)	0.0160 (8)	0.0155 (8)	−0.0002 (6)	0.0004 (7)	−0.0008 (7)
C5	0.0173 (8)	0.0184 (9)	0.0112 (8)	−0.0030 (7)	−0.0038 (6)	−0.0006 (7)
C6	0.0255 (9)	0.0168 (9)	0.0208 (9)	0.0006 (7)	0.0006 (8)	−0.0003 (8)
C7	0.0266 (9)	0.0186 (9)	0.0210 (10)	0.0007 (7)	−0.0032 (8)	0.0036 (8)
C8	0.0301 (10)	0.0263 (10)	0.0141 (9)	−0.0050 (8)	−0.0001 (8)	−0.0016 (8)
C9	0.0318 (10)	0.0241 (10)	0.0191 (9)	0.0032 (8)	−0.0004 (8)	−0.0057 (8)
C10	0.0255 (9)	0.0197 (9)	0.0185 (9)	0.0037 (7)	−0.0007 (8)	−0.0011 (8)

*Geometric parameters (Å, °)*

S1—C4	1.6774 (18)	C5—C10	1.525 (2)
O1—C1	1.315 (2)	C5—H5	1.0000
O1—H1	0.845 (10)	C6—C7	1.530 (3)
O2—C1	1.225 (2)	C6—H6A	0.9900

N1—C2	1.275 (2)	C6—H6B	0.9900
N1—N2	1.363 (2)	C7—C8	1.528 (3)
N2—C4	1.370 (2)	C7—H7A	0.9900
N2—H2	0.892 (9)	C7—H7B	0.9900
N3—C4	1.330 (2)	C8—C9	1.527 (3)
N3—C5	1.458 (2)	C8—H8A	0.9900
N3—H3	0.870 (9)	C8—H8B	0.9900
C1—C2	1.491 (2)	C9—C10	1.525 (3)
C2—C3	1.488 (3)	C9—H9A	0.9900
C3—H3A	0.9800	C9—H9B	0.9900
C3—H3B	0.9800	C10—H10A	0.9900
C3—H3C	0.9800	C10—H10B	0.9900
C5—C6	1.520 (3)		
C1—O1—H1	113.7 (18)	C5—C6—H6A	109.5
C2—N1—N2	119.52 (15)	C7—C6—H6A	109.5
N1—N2—C4	117.71 (14)	C5—C6—H6B	109.5
N1—N2—H2	121.1 (14)	C7—C6—H6B	109.5
C4—N2—H2	121.2 (14)	H6A—C6—H6B	108.1
C4—N3—C5	124.97 (14)	C8—C7—C6	111.63 (15)
C4—N3—H3	120.2 (16)	C8—C7—H7A	109.3
C5—N3—H3	114.8 (16)	C6—C7—H7A	109.3
O2—C1—O1	124.08 (15)	C8—C7—H7B	109.3
O2—C1—C2	120.71 (15)	C6—C7—H7B	109.3
O1—C1—C2	115.18 (15)	H7A—C7—H7B	108.0
N1—C2—C3	126.77 (15)	C9—C8—C7	110.38 (16)
N1—C2—C1	114.80 (15)	C9—C8—H8A	109.6
C3—C2—C1	118.38 (15)	C7—C8—H8A	109.6
C2—C3—H3A	109.5	C9—C8—H8B	109.6
C2—C3—H3B	109.5	C7—C8—H8B	109.6
H3A—C3—H3B	109.5	H8A—C8—H8B	108.1
C2—C3—H3C	109.5	C10—C9—C8	111.43 (15)
H3A—C3—H3C	109.5	C10—C9—H9A	109.3
H3B—C3—H3C	109.5	C8—C9—H9A	109.3
N3—C4—N2	115.34 (15)	C10—C9—H9B	109.3
N3—C4—S1	124.83 (14)	C8—C9—H9B	109.3
N2—C4—S1	119.82 (13)	H9A—C9—H9B	108.0
N3—C5—C6	109.71 (14)	C5—C10—C9	111.06 (14)
N3—C5—C10	111.03 (14)	C5—C10—H10A	109.4
C6—C5—C10	110.79 (15)	C9—C10—H10A	109.4
N3—C5—H5	108.4	C5—C10—H10B	109.4
C6—C5—H5	108.4	C9—C10—H10B	109.4
C10—C5—H5	108.4	H10A—C10—H10B	108.0
C5—C6—C7	110.56 (15)		
C2—N1—N2—C4	175.80 (15)	C4—N3—C5—C6	-151.10 (16)
N2—N1—C2—C3	-0.7 (3)	C4—N3—C5—C10	86.1 (2)
N2—N1—C2—C1	-178.00 (14)	N3—C5—C6—C7	-179.54 (14)

O2—C1—C2—N1	169.21 (15)	C10—C5—C6—C7	-56.59 (19)
O1—C1—C2—N1	-8.9 (2)	C5—C6—C7—C8	56.5 (2)
O2—C1—C2—C3	-8.4 (2)	C6—C7—C8—C9	-55.6 (2)
O1—C1—C2—C3	173.52 (15)	C7—C8—C9—C10	55.2 (2)
C5—N3—C4—N2	-177.12 (15)	N3—C5—C10—C9	178.84 (14)
C5—N3—C4—S1	4.2 (2)	C6—C5—C10—C9	56.7 (2)
N1—N2—C4—N3	0.7 (2)	C8—C9—C10—C5	-56.1 (2)
N1—N2—C4—S1	179.49 (12)		

*Hydrogen-bond geometry (Å, °)*

<i>D</i> —H $\cdots$ <i>A</i>	<i>D</i> —H	H $\cdots$ <i>A</i>	<i>D</i> $\cdots$ <i>A</i>	<i>D</i> —H $\cdots$ <i>A</i>
N3—H3 $\cdots$ N1	0.87 (1)	2.20 (2)	2.574 (2)	106 (2)
O1—H1 $\cdots$ O2 <sup>i</sup>	0.85 (1)	1.80 (1)	2.6416 (17)	172 (3)
N2—H2 $\cdots$ S1 <sup>ii</sup>	0.89 (1)	2.65 (1)	3.5384 (15)	176 (2)

Symmetry codes: (i)  $-x+1, -y+1, -z+1$ ; (ii)  $-x+2, -y+3, -z+1$ .