

Acta Crystallographica Section E

Structure Reports

Online

ISSN 1600-5368

trans-Dichloridobis[(pyridin-4-yl)boronic acid- κ N]palladium(II) dimethyl sulfoxide disolvate

Adam Duong, James D. Wuest and Thierry Maris*

Département de Chimie, Université de Montréal, 2900 Boulevard Édouard-Montpetit, Montréal, Québec, Canada H3C 3J7

Correspondence e-mail: thierry.maris@umontreal.ca

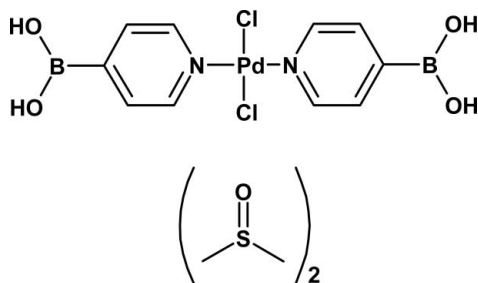
Received 18 March 2011; accepted 22 March 2011

Key indicators: single-crystal X-ray study; $T = 150$ K; mean $\sigma(\text{C}-\text{C}) = 0.004$ Å; R factor = 0.031; wR factor = 0.082; data-to-parameter ratio = 15.7.

In the title compound, $[\text{PdCl}_2(\text{C}_5\text{H}_6\text{BNO}_2)_2] \cdot 2\text{C}_2\text{H}_6\text{OS}$, the Pd^{II} ion is located on an inversion centre and is four-coordinated in a *trans* square-planar geometry by two chloride ions and two (pyridin-4-yl)boronic acid ligands. The $\text{Pd}-\text{N}$ and $\text{Pd}-\text{Cl}$ distances are 2.023 (2) and 2.2977 (7) Å, respectively, and the average $\text{N}-\text{Pd}-\text{Cl}$ angle is 90° . The dimethyl sulfoxide solvent molecules play a key role in the crystal structure by bridging the complex molecules *via* $\text{O}-\text{H} \cdots \text{O}$ hydrogen bonds, forming tapes running along the b axis. $\text{C}-\text{H} \cdots \text{O}$ interactions also contribute to the cohesion of the crystal.

Related literature

For other Pd^{II} complexes with chloride and pyridine ligands, see: Qin *et al.* (2002); Viossat *et al.* (1993); Zordan & Brammer (2006).



Experimental

Crystal data

$[\text{PdCl}_2(\text{C}_5\text{H}_6\text{BNO}_2)_2] \cdot 2\text{C}_2\text{H}_6\text{OS}$
 $M_r = 579.39$

Triclinic, $P\bar{1}$
 $a = 6.2629$ (4) Å

$b = 8.1515$ (5) Å
 $c = 11.7761$ (7) Å
 $\alpha = 80.687$ (3)°
 $\beta = 82.248$ (3)°
 $\gamma = 77.456$ (3)°
 $V = 576.00$ (6) Å³

$Z = 1$
 Cu $K\alpha$ radiation
 $\mu = 10.62$ mm⁻¹
 $T = 150$ K
 $0.12 \times 0.09 \times 0.08$ mm

Data collection

Bruker SMART 6000
 diffractometer
 Absorption correction: multi-scan
 (SADABS; Sheldrick, 2004)
 $T_{\text{min}} = 0.252$, $T_{\text{max}} = 0.428$

6942 measured reflections
 2135 independent reflections
 2031 reflections with $I > 2\sigma(I)$
 $R_{\text{int}} = 0.041$

Refinement

$R[F^2 > 2\sigma(F^2)] = 0.031$
 $wR(F^2) = 0.082$
 $S = 1.07$
 2135 reflections

136 parameters
 H-atom parameters constrained
 $\Delta\rho_{\text{max}} = 0.68$ e Å⁻³
 $\Delta\rho_{\text{min}} = -0.87$ e Å⁻³

Table 1

Hydrogen-bond geometry (Å, °).

$D-H \cdots A$	$D-H$	$H \cdots A$	$D \cdots A$	$D-H \cdots A$
O8—H8 ⁱ ···O10 ⁱ	0.84	1.94	2.750 (3)	163
O9—H9 ⁱ ···O10	0.84	1.94	2.745 (3)	160
C5—H5 ⁱ ···O10	0.95	2.51	3.253 (3)	135
C12—H12A ⁱⁱ ···O8 ⁱⁱ	0.98	2.54	3.506 (4)	169
C12—H12B ⁱⁱⁱ ···O9 ⁱⁱⁱ	0.98	2.53	3.372 (4)	144

Symmetry codes: (i) $x + 1, y, z$; (ii) $-x + 1, -y + 1, -z + 1$; (iii) $x - 1, y, z$.

Data collection: *SMART* (Bruker, 2003); cell refinement: *SAINT* (Bruker, 2003); data reduction: *SAINT*; program(s) used to solve structure: *SHELXS97* (Sheldrick, 2008); program(s) used to refine structure: *SHELXL97* (Sheldrick, 2008); molecular graphics: *SHELXTL* (Sheldrick, 2008) and *Materials Studio* (Accelrys, 2002); software used to prepare material for publication: *UdMX* (Maris, 2004) and *publCIF* (Westrip, 2010).

We are grateful to the Natural Sciences and Engineering Research Council of Canada, the Ministère de l'Éducation du Québec, the Canada Foundation for Innovation, the Canada Research Chairs Program and the Université de Montréal for financial support.

Supplementary data and figures for this paper are available from the IUCr electronic archives (Reference: KP2316).

References

- Accelrys (2002). *Materials Studio*. Accelrys Inc., San Diego, California, USA.
 Bruker (2003). *SMART* and *SAINT*. Bruker AXS Inc., Madison, Wisconsin, USA.
 Maris, T. (2004). *UdMX*. University of Montréal, Montréal, QC, Canada.
 Qin, Z., Jennings, M. C., Puddephatt, R. J. & Muir, K. W. (2002). *Inorg. Chem.* **41**, 5174–5186.
 Sheldrick, G. M. (2004). *SADABS*. University of Göttingen, Germany.
 Sheldrick, G. M. (2008). *Acta Cryst.* **A64**, 112–122.
 Viossat, B., Dung, N.-H. & Robert, F. (1993). *Acta Cryst.* **C49**, 84–85.
 Westrip, S. P. (2010). *J. Appl. Cryst.* **43**, 920–925.
 Zordan, F. & Brammer, L. (2006). *Cryst. Growth Des.* **6**, 1374–1379.

supporting information

Acta Cryst. (2011). E67, m518 [doi:10.1107/S1600536811010713]

***trans*-Dichloridobis[(pyridin-4-yl)boronic acid- κ N]palladium(II) dimethyl sulfoxide disolvate**

Adam Duong, James D. Wuest and Thierry Maris

S1. Comment

The title compound was isolated as an air-stable yellow-orange solid. Each Pd^{II} centre lies on a crystallographic inversion centre in a square-planar environment. The chloride and (pyridin-4-yl)boronic acid ligands adopt a *trans* arrangement due to the molecular symmetry C_i ; N—Pd—Cl angles are about 90° (Fig. 1). The bond lengths expected for Pd—N and Pd—Cl (2.023 (2) Å and 2.2977 (7) Å, respectively) are similar to those observed in *trans*-dichloridobis(pyridine)Pd^{II} (Viossat *et al.*, 1993).

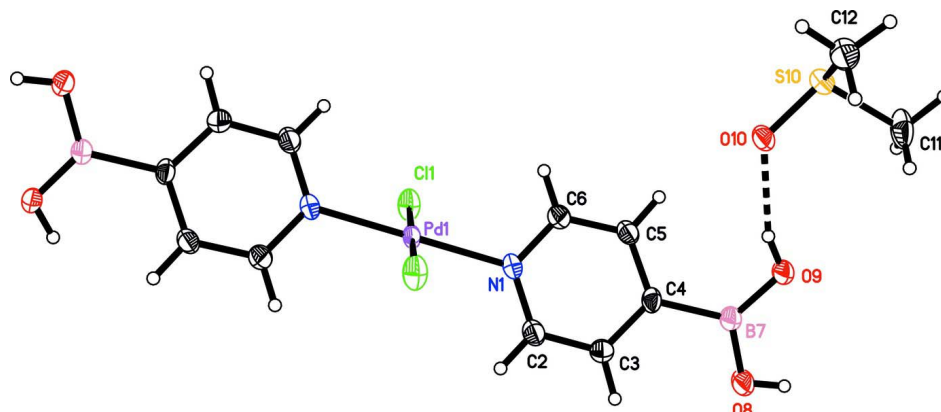
In the crystal structure, the solvent molecules of DMSO are linked by the boronic acid group of the complexes *via* O—H \cdots O hydrogen bonds (average distance 2.747 (3) Å) to form tapes (Fig. 2, Table 2). The tapes are further connected to create layers by C—H \cdots π interactions (distance C11—H11 \cdots Cg1 = 3.815 (4) Å where Cg1 is the centroid of the pyridine ring). Cohesion of the crystals also arises in part from C—H \cdots O interactions involving one methyl moiety of DMSO molecules and oxygen atoms of the boronic acid unit (average C \cdots O distance 3.439 (4) Å).

S2. Experimental

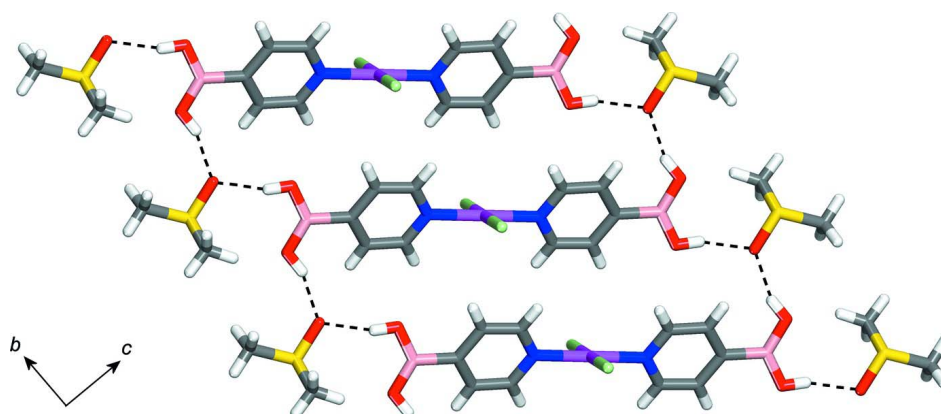
A suspension of PdCl₂ (36 mg, 0.20 mmol) and (pyridin-4-yl)boronic acid (50 mg, 0.41 mmol) in MeCN (20 mL) was stirred for 16 h. The resulting mixture was filtered, and the solid was washed thoroughly with MeCN and then dried under vacuum before being purified by crystallization. Crystals of the title complex were grown by slow evaporation from a solution of the solid in DMSO.

S3. Refinement

All H-atoms were placed in calculated positions (C—H 0.95 - 0.98 Å) and were included in the refinement in the riding model approximation with U(H) set to 1.2Ueq (C) for aromatic H and 1.5Ueq (C) for methylene H. Hydroxyl H atoms were first located after a difference Fourier map calculation then refined in the riding model approximation using the AFIX 81 instruction from the *SHELX* program suite (Sheldrick, 2008), with O—H 0.84 Å and U(H) set to 1.2Ueq(O).

**Figure 1**

The molecular structure of the title compound with atom labels and 50% probability displacement ellipsoids for non-hydrogen atoms. Hydrogen atoms are drawn as a sphere of arbitrary radius. The unlabelled part is related by the symmetry operation $-x, -y, 2 - z$.

**Figure 2**

Partial view of the packing of the title compound, viewed down the a axis, showing one layer of molecules connected by O—H...O hydrogen bonds (dashed lines) involving solvent molecules of DMSO.

***trans*-Dichloridobis[(pyridin-4-yl)boronic acid- κ N]palladium(II) dimethyl sulfoxide disolvate**

Crystal data

$[\text{PdCl}_2(\text{C}_5\text{H}_6\text{BNO}_2)_2] \cdot 2\text{C}_2\text{H}_6\text{OS}$

$M_r = 579.39$

Triclinic, $P\bar{1}$

Hall symbol: $-P\ 1$

$a = 6.2629$ (4) Å

$b = 8.1515$ (5) Å

$c = 11.7761$ (7) Å

$\alpha = 80.687$ (3)°

$\beta = 82.248$ (3)°

$\gamma = 77.456$ (3)°

$V = 576.00$ (6) Å³

$Z = 1$

$F(000) = 292$

$D_x = 1.670$ Mg m⁻³

Cu $K\alpha$ radiation, $\lambda = 1.54178$ Å

Cell parameters from 4582 reflections

$\theta = 3.8\text{--}72.2^\circ$

$\mu = 10.62$ mm⁻¹

$T = 150$ K

Block, yellow

$0.12 \times 0.09 \times 0.08$ mm

Data collection

Bruker SMART 6000
diffractometer

Radiation source: Rotating Anode
Montel 200 optics monochromator
Detector resolution: 5.5 pixels mm⁻¹
 ω scans

Absorption correction: multi-scan
(*SADABS*; Sheldrick, 2004)

$T_{\min} = 0.252$, $T_{\max} = 0.428$

6942 measured reflections

2135 independent reflections

2031 reflections with $I > 2\sigma(I)$

$R_{\text{int}} = 0.041$

$\theta_{\max} = 72.2^\circ$, $\theta_{\min} = 3.8^\circ$

$h = -7 \rightarrow 7$

$k = -10 \rightarrow 9$

$l = -14 \rightarrow 14$

Refinement

Refinement on F^2

Least-squares matrix: full

$R[F^2 > 2\sigma(F^2)] = 0.031$

$wR(F^2) = 0.082$

$S = 1.07$

2135 reflections

136 parameters

0 restraints

Primary atom site location: structure-invariant
direct methods

Secondary atom site location: difference Fourier
map

Hydrogen site location: inferred from
neighbouring sites

H-atom parameters constrained

$w = 1/[\sigma^2(F_o^2) + (0.0545P)^2 + 0.0938P]$

where $P = (F_o^2 + 2F_c^2)/3$

$(\Delta/\sigma)_{\max} < 0.001$

$\Delta\rho_{\max} = 0.68 \text{ e } \text{\AA}^{-3}$

$\Delta\rho_{\min} = -0.87 \text{ e } \text{\AA}^{-3}$

Extinction correction: *SHELXL97* (Sheldrick,
2008), $F_c^* = kFc[1 + 0.001xFc^2\lambda^3/\sin(2\theta)]^{-1/4}$

Extinction coefficient: 0.0025 (5)

Special details

Experimental. X-ray crystallographic data for I were collected from a single-crystal sample, which was mounted on a loop fiber. Data were collected using a Bruker Platform diffractometer, equipped with a Bruker *SMART* 4 K Charged-Coupled Device (CCD) Area Detector using the program *APEX2* and a Nonius FR591 rotating anode equipped with Montel 200 optics. The crystal-to-detector distance was 5.0 cm, and the data collection was carried out in 512 x 512 pixel mode. The initial unit-cell parameters were determined by a least-squares fit of the angular setting of strong reflections, collected by a 10.0 degree scan in 33 frames over four different parts of the reciprocal space (132 frames total). One complete sphere of data was collected to better than 0.80 Å resolution.

Geometry. All e.s.d.'s (except the e.s.d. in the dihedral angle between two l.s. planes) were estimated using the full covariance matrix. The cell e.s.d.'s were taken into account individually in the estimation of e.s.d.'s in distances, angles and torsion angles; correlations between e.s.d.'s in cell parameters were only used when they are defined by crystal symmetry. An approximate (isotropic) treatment of cell e.s.d.'s was used for estimating e.s.d.'s involving l.s. planes.

Refinement. Refinement of F^2 against ALL reflections. The weighted R -factor wR and goodness of fit S are based on F^2 , conventional R -factors R are based on F , with F set to zero for negative F^2 . The threshold expression of $F^2 > \sigma(F^2)$ is used only for calculating R -factors(gt) etc. and is not relevant to the choice of reflections for refinement. R -factors based on F^2 are statistically about twice as large as those based on F , and R -factors based on ALL data will be even larger.

Fractional atomic coordinates and isotropic or equivalent isotropic displacement parameters (Å²)

	<i>x</i>	<i>y</i>	<i>z</i>	$U_{\text{iso}}^*/U_{\text{eq}}$
Pd1	0.0000	0.0000	1.0000	0.01847 (14)
Cl1	0.11789 (13)	-0.28133 (9)	0.97775 (6)	0.02895 (19)
N1	0.2223 (4)	0.0656 (3)	0.86854 (18)	0.0200 (5)
C2	0.3867 (5)	0.1387 (4)	0.8834 (2)	0.0236 (6)
H2	0.4017	0.1599	0.9586	0.028*
C3	0.5340 (5)	0.1837 (4)	0.7926 (2)	0.0233 (6)
H3	0.6538	0.2292	0.8067	0.028*
C4	0.5097 (5)	0.1633 (4)	0.6795 (2)	0.0203 (6)

C5	0.3368 (5)	0.0875 (4)	0.6668 (2)	0.0217 (6)
H5	0.3141	0.0695	0.5920	0.026*
C6	0.1981 (5)	0.0384 (4)	0.7615 (2)	0.0223 (6)
H6	0.0835	-0.0156	0.7511	0.027*
B7	0.6709 (6)	0.2213 (5)	0.5709 (3)	0.0233 (7)
O8	0.8706 (4)	0.2330 (3)	0.59305 (17)	0.0353 (6)
H8	0.9476	0.2547	0.5305	0.042*
O9	0.6102 (4)	0.2582 (3)	0.46159 (16)	0.0296 (5)
H9	0.4748	0.2611	0.4638	0.036*
O10	0.1939 (4)	0.2593 (3)	0.41211 (16)	0.0306 (5)
S10	0.13090 (13)	0.28540 (10)	0.28929 (6)	0.02519 (19)
C11	0.3559 (6)	0.3547 (5)	0.1998 (3)	0.0399 (9)
H11A	0.4844	0.2613	0.2002	0.060*
H11B	0.3909	0.4503	0.2294	0.060*
H11C	0.3164	0.3905	0.1205	0.060*
C12	-0.0641 (5)	0.4798 (4)	0.2747 (3)	0.0318 (7)
H12A	-0.0058	0.5685	0.3002	0.048*
H12B	-0.2015	0.4657	0.3223	0.048*
H12C	-0.0925	0.5125	0.1935	0.048*

Atomic displacement parameters (Å²)

	U^{11}	U^{22}	U^{33}	U^{12}	U^{13}	U^{23}
Pd1	0.01890 (19)	0.0231 (2)	0.01229 (16)	-0.00496 (12)	0.00089 (10)	-0.00004 (11)
Cl1	0.0351 (4)	0.0237 (4)	0.0244 (3)	-0.0038 (3)	0.0060 (3)	-0.0028 (3)
N1	0.0230 (13)	0.0214 (12)	0.0139 (10)	-0.0032 (10)	-0.0004 (9)	-0.0006 (9)
C2	0.0244 (16)	0.0282 (16)	0.0172 (12)	-0.0038 (13)	-0.0012 (11)	-0.0028 (11)
C3	0.0199 (15)	0.0288 (16)	0.0215 (12)	-0.0057 (13)	-0.0036 (11)	-0.0016 (11)
C4	0.0164 (14)	0.0251 (15)	0.0165 (11)	-0.0021 (12)	0.0020 (10)	-0.0002 (10)
C5	0.0232 (15)	0.0258 (15)	0.0157 (11)	-0.0036 (12)	-0.0027 (10)	-0.0029 (10)
C6	0.0230 (15)	0.0238 (15)	0.0195 (12)	-0.0045 (12)	-0.0038 (11)	-0.0006 (11)
B7	0.0205 (17)	0.0310 (18)	0.0180 (13)	-0.0067 (14)	0.0005 (12)	-0.0026 (12)
O8	0.0205 (12)	0.0661 (17)	0.0194 (9)	-0.0150 (12)	-0.0018 (8)	0.0021 (10)
O9	0.0208 (11)	0.0519 (15)	0.0173 (9)	-0.0140 (10)	0.0004 (8)	-0.0007 (9)
O10	0.0199 (11)	0.0520 (15)	0.0180 (9)	-0.0087 (10)	-0.0045 (8)	0.0051 (9)
S10	0.0271 (4)	0.0280 (4)	0.0205 (3)	-0.0054 (3)	-0.0063 (3)	-0.0003 (3)
C11	0.0300 (19)	0.051 (2)	0.0259 (15)	0.0031 (17)	0.0088 (13)	0.0087 (15)
C12	0.0251 (17)	0.0374 (19)	0.0289 (14)	-0.0008 (14)	-0.0010 (12)	-0.0011 (13)

Geometric parameters (Å, °)

Pd1—N1 ⁱ	2.023 (2)	C6—H6	0.9500
Pd1—N1	2.023 (2)	B7—O8	1.338 (4)
Pd1—Cl1 ⁱ	2.2977 (7)	B7—O9	1.360 (4)
Pd1—Cl1	2.2977 (7)	O8—H8	0.8400
N1—C2	1.340 (4)	O9—H9	0.8400
N1—C6	1.348 (3)	O10—S10	1.5201 (19)
C2—C3	1.372 (4)	S10—C12	1.778 (3)

C2—H2	0.9500	S10—C11	1.780 (3)
C3—C4	1.401 (4)	C11—H11a	0.9800
C3—H3	0.9500	C11—H11b	0.9800
C4—C5	1.393 (4)	C11—H11c	0.9800
C4—B7	1.594 (4)	C12—H12a	0.9800
C5—C6	1.380 (4)	C12—H12b	0.9800
C5—H5	0.9500	C12—H12c	0.9800
N1 ⁱ —Pd1—N1	180.0	N1—C6—H6	119.4
N1 ⁱ —Pd1—Cl1 ⁱ	90.64 (7)	C5—C6—H6	119.4
N1—Pd1—Cl1 ⁱ	89.36 (7)	O8—B7—O9	121.3 (3)
N1 ⁱ —Pd1—C11	89.36 (7)	O8—B7—C4	116.3 (3)
N1—Pd1—C11	90.64 (7)	O9—B7—C4	122.4 (3)
Cl1 ⁱ —Pd1—C11	180.0	B7—O8—H8	109.5
C2—N1—C6	119.3 (2)	B7—O9—H9	109.5
C2—N1—Pd1	122.71 (17)	O10—S10—C12	106.02 (14)
C6—N1—Pd1	117.96 (19)	O10—S10—C11	105.38 (15)
N1—C2—C3	121.6 (2)	C12—S10—C11	98.27 (17)
N1—C2—H2	119.2	S10—C11—H11A	109.5
C3—C2—H2	119.2	S10—C11—H11B	109.5
C2—C3—C4	120.8 (3)	H11A—C11—H11B	109.5
C2—C3—H3	119.6	S10—C11—H11C	109.5
C4—C3—H3	119.6	H11A—C11—H11C	109.5
C5—C4—C3	116.2 (2)	H11B—C11—H11C	109.5
C5—C4—B7	121.4 (2)	S10—C12—H12A	109.5
C3—C4—B7	122.4 (3)	S10—C12—H12B	109.5
C6—C5—C4	120.8 (2)	H12A—C12—H12B	109.5
C6—C5—H5	119.6	S10—C12—H12C	109.5
C4—C5—H5	119.6	H12A—C12—H12C	109.5
N1—C6—C5	121.2 (3)	H12B—C12—H12C	109.5
Cl1 ⁱ —Pd1—N1—C2	63.4 (2)	C3—C4—C5—C6	0.7 (4)
Cl1—Pd1—N1—C2	-116.6 (2)	B7—C4—C5—C6	-179.8 (3)
Cl1 ⁱ —Pd1—N1—C6	-114.6 (2)	C2—N1—C6—C5	-1.3 (5)
Cl1—Pd1—N1—C6	65.4 (2)	Pd1—N1—C6—C5	176.8 (2)
C6—N1—C2—C3	-1.3 (5)	C4—C5—C6—N1	1.6 (5)
Pd1—N1—C2—C3	-179.3 (2)	C5—C4—B7—O8	-156.2 (3)
N1—C2—C3—C4	3.7 (5)	C3—C4—B7—O8	23.2 (5)
C2—C3—C4—C5	-3.3 (5)	C5—C4—B7—O9	24.3 (5)
C2—C3—C4—B7	177.3 (3)	C3—C4—B7—O9	-156.3 (3)

Symmetry code: (i) $-x, -y, -z+2$.*Hydrogen-bond geometry* ($\text{\AA}, ^\circ$)

<i>D</i> —H \cdots <i>A</i>	<i>D</i> —H	H \cdots <i>A</i>	<i>D</i> \cdots <i>A</i>	<i>D</i> —H \cdots <i>A</i>
O8—H8 \cdots O10 ⁱⁱ	0.84	1.94	2.750 (3)	163
O9—H9 \cdots O10	0.84	1.94	2.745 (3)	160

C5—H5···O10	0.95	2.51	3.253 (3)	135
C12—H12A···O8 ⁱⁱⁱ	0.98	2.54	3.506 (4)	169
C12—H12B···O9 ^{iv}	0.98	2.53	3.372 (4)	144

Symmetry codes: (ii) $x+1, y, z$; (iii) $-x+1, -y+1, -z+1$; (iv) $x-1, y, z$.