

Acta Crystallographica Section E

## Structure Reports

Online

ISSN 1600-5368

## 2'-Chloro-4-methoxy-3-nitrobenzil

 G. Nithya,<sup>a</sup> B. Thanuja,<sup>a</sup> G. Chakkaravarthi<sup>b\*</sup> and Charles C. Kanagam<sup>c</sup>
<sup>a</sup>Department of Chemistry, Vels Univeristy, Pallavaram, Chennai 600 117, Tamil Nadu, India, <sup>b</sup>Department of Physics, CPCL Polytechnic College, Chennai 600 068, Tamil Nadu, India, and <sup>c</sup>Department of Chemistry, SRM Valliammai Engineering College, Kattankulathur 603 203, Tamil Nadu, India

Correspondence e-mail: chakkaravarthi\_2005@yahoo.com

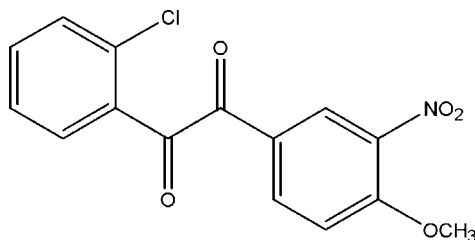
Received 23 May 2011; accepted 23 May 2011

 Key indicators: single-crystal X-ray study;  $T = 295$  K; mean  $\sigma(\text{C}-\text{C}) = 0.002$  Å;  $R$  factor = 0.042;  $wR$  factor = 0.128; data-to-parameter ratio = 19.7.

In the title compound,  $\text{C}_{15}\text{H}_{10}\text{ClNO}_5$ , the dihedral angle between the aromatic rings is  $87.99$  ( $5$ )°. The  $\text{O}-\text{C}-\text{C}-\text{O}$  torsion angle between the two carbonyl units is  $-119.03$  ( $16$ )°. The crystal structure is stabilized by a weak intermolecular  $\text{C}-\text{H}\cdots\text{O}$  hydrogen bond.

## Related literature

For the biological activity of benzil derivatives, see: Mousset *et al.* (2008); Mahabusarakam *et al.* (2004); Ganapaty *et al.* (2009). For bond-length data and related structures, see: Allen *et al.* (1987); Fun & Kia (2008a,b).



## Experimental

## Crystal data

 $\text{C}_{15}\text{H}_{10}\text{ClNO}_5$   
 $M_r = 319.69$   
 Triclinic,  $P\bar{1}$   
 $a = 7.8559$  (2) Å  
 $b = 8.1003$  (2) Å  
 $c = 12.4961$  (3) Å

 $\alpha = 74.893$  (1)°  
 $\beta = 74.809$  (2)°  
 $\gamma = 68.593$  (1)°  
 $V = 702.32$  (3) Å<sup>3</sup>  
 $Z = 2$   
 Mo  $K\alpha$  radiation

 $\mu = 0.30$  mm<sup>-1</sup>  
 $T = 295$  K

 $0.30 \times 0.20 \times 0.20$  mm

## Data collection

 Bruker Kappa APEXII diffractometer  
 Absorption correction: multi-scan (SADABS; Sheldrick, 1996)  
 $T_{\min} = 0.917$ ,  $T_{\max} = 0.943$ 

 17487 measured reflections  
 3937 independent reflections  
 3150 reflections with  $I > 2\sigma(I)$   
 $R_{\text{int}} = 0.021$ 

## Refinement

 $R[F^2 > 2\sigma(F^2)] = 0.042$   
 $wR(F^2) = 0.128$   
 $S = 1.06$   
 3937 reflections

 200 parameters  
 H-atom parameters constrained  
 $\Delta\rho_{\text{max}} = 0.48$  e Å<sup>-3</sup>  
 $\Delta\rho_{\text{min}} = -0.41$  e Å<sup>-3</sup>

Table 1

Hydrogen-bond geometry (Å, °).

$D-H\cdots A$	$D-H$	$H\cdots A$	$D\cdots A$	$D-H\cdots A$
$\text{C3}-\text{H3}\cdots\text{O2}^i$	0.93	2.53	3.318 (2)	143

 Symmetry code: (i)  $-x, -y + 1, -z + 2$ .

Data collection: APEX2 (Bruker, 2004); cell refinement: SAINT (Bruker, 2004); data reduction: SAINT; program(s) used to solve structure: SHELXS97 (Sheldrick, 2008); program(s) used to refine structure: SHELXL97 (Sheldrick, 2008); molecular graphics: PLATON (Spek, 2009); software used to prepare material for publication: SHELXL97.

GC acknowledges Vels University for providing laboratory facilities as well the opportunity to do the research work and members of the Chemistry Department of SRM Valliammai Engineering College for useful discussions.

Supplementary data and figures for this paper are available from the IUCr electronic archives (Reference: BT5555).

## References

- Allen, F. H., Kennard, O., Watson, D. G., Brammer, L., Orpen, A. G. & Taylor, R. (1987). *J. Chem. Soc. Perkin Trans. 2*, pp. S1–19.
- Bruker (2004). APEX2 and SAINT. Bruker AXS Inc., Madison, Wisconsin, USA.
- Fun, H.-K. & Kia, R. (2008a). *Acta Cryst. E* **64**, o1615–o1616.
- Fun, H.-K. & Kia, R. (2008b). *Acta Cryst. E* **64**, o1617–o1618.
- Ganapaty, S., Srilakshmi, G. V. K., Pannakal, S. T., Rahman, H., Laatsch, H. & Brun, R. (2009). *Phytochemistry*, **70**, 95–99.
- Mahabusarakam, W., Deachathai, S., Phongpaichit, S., Jansakul, C. & Taylor, W. C. (2004). *Phytochemistry*, **65**, 1185–1191.
- Mousset, C., Giraud, A., Provot, O., Hamze, A., Bignon, J., Liu, J.-M., Thoret, S., Dubois, J., Brion, J.-D. & Alami, M. (2008). *Bioorg. Med. Chem. Lett.* **18**, 3266–3271.
- Sheldrick, G. M. (1996). SADABS. University of Göttingen, Germany.
- Sheldrick, G. M. (2008). *Acta Cryst. A* **64**, 112–122.
- Spek, A. L. (2009). *Acta Cryst. D* **65**, 148–155.

## supporting information

*Acta Cryst.* (2011). E67, o1535 [doi:10.1107/S1600536811019532]

**2'-Chloro-4-methoxy-3-nitrobenzil**

**G. Nithya, B. Thanuja, G. Chakkaravarthi and Charles C. Kanagam**

**S1. Comment**

Benzil derivatives exhibit radical scavenging, antibacterial and hypertensive (Mahabusarakam *et al.*, 2004), antiprotozoal (Ganapaty *et al.*, 2009), antiproliferative and antimetabolic (Mousset *et al.*, 2008) activities.

The geometric parameters of the title compound (Fig. 1) agree with those in the reported structures (Fun & Kia, 2008*a,b*) and the literature values (Allen *et al.*, 1987). The dihedral angle between the two rings is 87.99 (5)°. The mean plane of methoxy and nitro groups are twisted at an angle of 4.95 (8) and 32.19 (6)°, respectively, with the benzene ring (C9—C14).

The dicarbonyl unit has *s-trans* conformation as can be indicated by the torsion angles of O1—C7—C6—C1, and O2—C8—C9—C14 being -145.86 (16) and -171.77 (15)°, respectively. This conformation is authenticated by the torsion angle of O1—C7—C8—O2, being -119.03 (16)°.

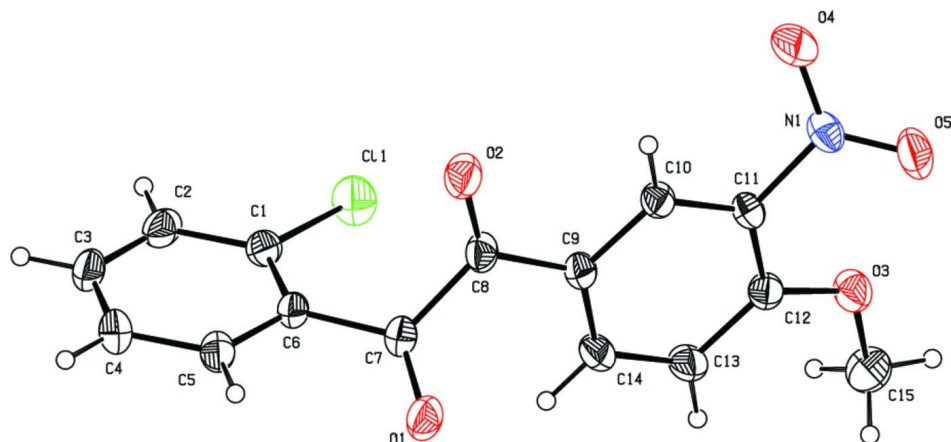
The crystal structure exhibits weak C—H...O (Table 1 & Fig. 2) and  $\pi\cdots\pi$  [ $Cg1\cdots Cg1$  (-x,1 - y,2 - z) distance of 3.8904 (9) Å and  $Cg2\cdots Cg2$  (1 - x,2 - y,1 - z) distance of 4.2891 (9) Å;  $Cg1$  and  $Cg2$  are the centroids of the rings (C1—C6) and (C9—C14), respectively] interactions.

**S2. Experimental**

The title compound was synthesized in two steps. The first step involves the benzoin condensation. 4 g of KCN was dissolved in 75 cc of water in a one litre flask. To this was added 6.8 g (0.05 mole) of anisaldehyde, 7 g (0.05 mole) of 2-chloro benzaldehyde and 75 cc of 95% ethanol. The mixture formed a solution at the boiling temperature and was refluxed for one and half hours. Steam was then passed through the solution until all the alcohol and nearly all the unchanged aldehyde were removed. The condensed water was decanted from the product and later set away to crystallize. The product was then pressed as free as possible from oily material on a suction funnel and washed with cold alcohol. In this way about 9 g of crude product was obtained. The crude mixture was dissolved in hot alcohol and allowed to crystallize slowly. The 2'-chloro-4-methoxy benzoin crystallizes out as colourless, hexagonal crystals. From the benzoin about 1 gram was taken and treated with concentrated nitric acid by heating in a water bath inside a fume cupboard for about 3 h until it is free from the smell of nitrogen dioxide. It is then cooled and crystallized using hot ethanol. The obtained benzil is recrystallized using chloroform / acetone in the ratio 3:1. Pure crystals of benzil separate out. The yield is about 70–80%.

**S3. Refinement**

H atoms were positioned geometrically and refined using riding model with C—H = 0.93 Å and  $U_{iso}(H) = 1.2U_{eq}(C)$  for aromatic C—H and C—H = 0.96 Å and  $U_{iso}(H) = 1.5U_{eq}(C)$  for CH<sub>3</sub>.



**Figure 1**

The molecular structure of the title compound, with atom labels and 30% probability displacement ellipsoids for non-H atoms.

### 1-(2-chlorophenyl)-2-(4-methoxy-3-nitrophenyl)ethane-1,2-dione

#### Crystal data

$C_{15}H_{10}ClNO_5$

$M_r = 319.69$

Triclinic,  $P\bar{1}$

Hall symbol:  $-P\ 1$

$a = 7.8559\ (2)\ \text{\AA}$

$b = 8.1003\ (2)\ \text{\AA}$

$c = 12.4961\ (3)\ \text{\AA}$

$\alpha = 74.893\ (1)^\circ$

$\beta = 74.809\ (2)^\circ$

$\gamma = 68.593\ (1)^\circ$

$V = 702.32\ (3)\ \text{\AA}^3$

$Z = 2$

$F(000) = 328$

$D_x = 1.512\ \text{Mg m}^{-3}$

Mo  $K\alpha$  radiation,  $\lambda = 0.71073\ \text{\AA}$

Cell parameters from 8570 reflections

$\theta = 2.7\text{--}29.0^\circ$

$\mu = 0.30\ \text{mm}^{-1}$

$T = 295\ \text{K}$

Block, colourless

$0.30 \times 0.20 \times 0.20\ \text{mm}$

#### Data collection

Bruker Kappa APEXII  
diffractometer

Radiation source: fine-focus sealed tube

Graphite monochromator

$\omega$  and  $\varphi$  scans

Absorption correction: multi-scan

(*SADABS*; Sheldrick, 1996)

$T_{\min} = 0.917$ ,  $T_{\max} = 0.943$

17487 measured reflections

3937 independent reflections

3150 reflections with  $I > 2\sigma(I)$

$R_{\text{int}} = 0.021$

$\theta_{\max} = 29.6^\circ$ ,  $\theta_{\min} = 2.8^\circ$

$h = -10 \rightarrow 10$

$k = -11 \rightarrow 10$

$l = -12 \rightarrow 17$

#### Refinement

Refinement on  $F^2$

Least-squares matrix: full

$R[F^2 > 2\sigma(F^2)] = 0.042$

$wR(F^2) = 0.128$

$S = 1.06$

3937 reflections

200 parameters

0 restraints

Primary atom site location: structure-invariant  
direct methods

Secondary atom site location: difference Fourier  
map

Hydrogen site location: inferred from  
neighbouring sites

H-atom parameters constrained

$w = 1/[\sigma^2(F_o^2) + (0.0635P)^2 + 0.160P]$

where  $P = (F_o^2 + 2F_c^2)/3$

$(\Delta/\sigma)_{\max} < 0.001$

$\Delta\rho_{\max} = 0.48\ \text{e \AA}^{-3}$

$\Delta\rho_{\min} = -0.41\ \text{e \AA}^{-3}$

Fractional atomic coordinates and isotropic or equivalent isotropic displacement parameters ( $\text{\AA}^2$ )

	<i>x</i>	<i>y</i>	<i>z</i>	$U_{\text{iso}}^*/U_{\text{eq}}$
C11	0.15981 (6)	0.62735 (6)	0.72481 (4)	0.06164 (15)
O1	0.66183 (15)	0.31713 (16)	0.83551 (11)	0.0568 (3)
O2	0.39794 (18)	0.70912 (17)	0.88704 (10)	0.0583 (3)
O3	0.82025 (17)	0.96590 (15)	0.40294 (9)	0.0523 (3)
O4	0.5354 (2)	1.23772 (19)	0.64274 (14)	0.0786 (5)
O5	0.7972 (2)	1.19529 (19)	0.52797 (13)	0.0714 (4)
N1	0.6714 (2)	1.14290 (17)	0.58676 (11)	0.0457 (3)
C1	0.17355 (19)	0.45206 (19)	0.83978 (12)	0.0404 (3)
C2	0.0214 (2)	0.3912 (2)	0.88416 (15)	0.0505 (4)
H2	-0.0877	0.4486	0.8552	0.061*
C3	0.0327 (2)	0.2455 (2)	0.97122 (17)	0.0571 (4)
H3	-0.0693	0.2046	1.0012	0.069*
C4	0.1931 (3)	0.1598 (2)	1.01429 (16)	0.0587 (4)
H4	0.1997	0.0611	1.0730	0.070*
C5	0.3451 (2)	0.2209 (2)	0.96994 (14)	0.0480 (3)
H5	0.4537	0.1627	0.9993	0.058*
C6	0.33717 (18)	0.36820 (18)	0.88208 (12)	0.0376 (3)
C7	0.50704 (19)	0.4244 (2)	0.83798 (12)	0.0402 (3)
C8	0.4875 (2)	0.6252 (2)	0.81244 (12)	0.0411 (3)
C9	0.59015 (19)	0.70248 (18)	0.70630 (12)	0.0384 (3)
C10	0.59340 (19)	0.87676 (18)	0.69408 (12)	0.0383 (3)
H10	0.5392	0.9386	0.7540	0.046*
C11	0.67654 (19)	0.95783 (17)	0.59376 (12)	0.0370 (3)
C12	0.7569 (2)	0.87131 (19)	0.50031 (12)	0.0397 (3)
C13	0.7560 (2)	0.6947 (2)	0.51480 (13)	0.0471 (3)
H13	0.8119	0.6315	0.4556	0.057*
C14	0.6734 (2)	0.61296 (19)	0.61536 (13)	0.0453 (3)
H14	0.6732	0.4958	0.6228	0.054*
C15	0.8938 (3)	0.8816 (3)	0.30568 (15)	0.0650 (5)
H15A	1.0008	0.7784	0.3192	0.098*
H15B	0.9292	0.9660	0.2416	0.098*
H15C	0.8008	0.8441	0.2911	0.098*

Atomic displacement parameters ( $\text{\AA}^2$ )

	$U^{11}$	$U^{22}$	$U^{33}$	$U^{12}$	$U^{13}$	$U^{23}$
C11	0.0595 (3)	0.0632 (3)	0.0616 (3)	-0.0207 (2)	-0.0251 (2)	0.0054 (2)
O1	0.0354 (5)	0.0565 (7)	0.0711 (8)	-0.0172 (5)	-0.0089 (5)	0.0038 (6)
O2	0.0625 (7)	0.0654 (7)	0.0542 (7)	-0.0350 (6)	0.0107 (5)	-0.0236 (6)
O3	0.0677 (7)	0.0483 (6)	0.0396 (5)	-0.0255 (5)	0.0027 (5)	-0.0083 (4)
O4	0.0917 (11)	0.0534 (7)	0.0943 (11)	-0.0305 (7)	0.0123 (8)	-0.0384 (8)
O5	0.0858 (10)	0.0603 (8)	0.0791 (9)	-0.0483 (7)	0.0052 (7)	-0.0153 (7)
N1	0.0600 (8)	0.0395 (6)	0.0464 (7)	-0.0238 (6)	-0.0113 (6)	-0.0094 (5)
C1	0.0379 (7)	0.0413 (7)	0.0461 (7)	-0.0148 (6)	-0.0065 (5)	-0.0128 (6)
C2	0.0344 (7)	0.0574 (9)	0.0682 (10)	-0.0180 (6)	-0.0040 (7)	-0.0265 (8)

C3	0.0434 (8)	0.0594 (10)	0.0749 (11)	-0.0309 (7)	0.0117 (8)	-0.0246 (9)
C4	0.0578 (10)	0.0507 (9)	0.0641 (10)	-0.0294 (8)	0.0054 (8)	-0.0036 (8)
C5	0.0434 (7)	0.0443 (8)	0.0538 (9)	-0.0187 (6)	-0.0059 (6)	-0.0013 (6)
C6	0.0344 (6)	0.0384 (6)	0.0425 (7)	-0.0170 (5)	-0.0023 (5)	-0.0088 (5)
C7	0.0368 (7)	0.0461 (7)	0.0403 (7)	-0.0199 (6)	-0.0060 (5)	-0.0035 (6)
C8	0.0387 (7)	0.0463 (7)	0.0448 (7)	-0.0226 (6)	-0.0046 (6)	-0.0090 (6)
C9	0.0385 (6)	0.0377 (7)	0.0431 (7)	-0.0180 (5)	-0.0054 (5)	-0.0080 (5)
C10	0.0406 (7)	0.0397 (7)	0.0398 (7)	-0.0175 (6)	-0.0045 (5)	-0.0122 (5)
C11	0.0419 (7)	0.0333 (6)	0.0414 (7)	-0.0174 (5)	-0.0090 (5)	-0.0070 (5)
C12	0.0412 (7)	0.0403 (7)	0.0388 (7)	-0.0158 (6)	-0.0040 (5)	-0.0084 (5)
C13	0.0570 (9)	0.0404 (7)	0.0447 (8)	-0.0172 (7)	0.0010 (6)	-0.0173 (6)
C14	0.0535 (8)	0.0352 (7)	0.0510 (8)	-0.0191 (6)	-0.0041 (6)	-0.0126 (6)
C15	0.0772 (12)	0.0696 (11)	0.0423 (8)	-0.0258 (10)	0.0097 (8)	-0.0175 (8)

*Geometric parameters (Å, °)*

C11—C1	1.7315 (16)	C5—H5	0.9300
O1—C7	1.2072 (18)	C6—C7	1.4894 (18)
O2—C8	1.2098 (18)	C7—C8	1.531 (2)
O3—C12	1.3379 (17)	C8—C9	1.4755 (19)
O3—C15	1.4329 (19)	C9—C10	1.3888 (18)
O4—N1	1.2288 (19)	C9—C14	1.392 (2)
O5—N1	1.2081 (18)	C10—C11	1.3727 (19)
N1—C11	1.4649 (17)	C10—H10	0.9300
C1—C2	1.386 (2)	C11—C12	1.4039 (19)
C1—C6	1.387 (2)	C12—C13	1.397 (2)
C2—C3	1.375 (3)	C13—C14	1.375 (2)
C2—H2	0.9300	C13—H13	0.9300
C3—C4	1.371 (3)	C14—H14	0.9300
C3—H3	0.9300	C15—H15A	0.9600
C4—C5	1.386 (2)	C15—H15B	0.9600
C4—H4	0.9300	C15—H15C	0.9600
C5—C6	1.390 (2)		
C12—O3—C15	118.41 (13)	O2—C8—C7	116.30 (13)
O5—N1—O4	123.29 (13)	C9—C8—C7	120.11 (12)
O5—N1—C11	119.95 (13)	C10—C9—C14	118.62 (13)
O4—N1—C11	116.76 (13)	C10—C9—C8	118.39 (12)
C2—C1—C6	120.96 (14)	C14—C9—C8	122.86 (12)
C2—C1—C11	118.46 (12)	C11—C10—C9	120.09 (12)
C6—C1—C11	120.49 (11)	C11—C10—H10	120.0
C3—C2—C1	119.54 (15)	C9—C10—H10	120.0
C3—C2—H2	120.2	C10—C11—C12	122.04 (12)
C1—C2—H2	120.2	C10—C11—N1	116.88 (12)
C4—C3—C2	120.65 (14)	C12—C11—N1	121.04 (12)
C4—C3—H3	119.7	O3—C12—C13	124.79 (13)
C2—C3—H3	119.7	O3—C12—C11	118.04 (12)
C3—C4—C5	119.75 (16)	C13—C12—C11	117.09 (13)

C3—C4—H4	120.1	C14—C13—C12	120.92 (13)
C5—C4—H4	120.1	C14—C13—H13	119.5
C4—C5—C6	120.75 (16)	C12—C13—H13	119.5
C4—C5—H5	119.6	C13—C14—C9	121.19 (13)
C6—C5—H5	119.6	C13—C14—H14	119.4
C1—C6—C5	118.35 (12)	C9—C14—H14	119.4
C1—C6—C7	124.05 (13)	O3—C15—H15A	109.5
C5—C6—C7	117.59 (13)	O3—C15—H15B	109.5
O1—C7—C6	122.20 (13)	H15A—C15—H15B	109.5
O1—C7—C8	117.75 (12)	O3—C15—H15C	109.5
C6—C7—C8	119.31 (12)	H15A—C15—H15C	109.5
O2—C8—C9	123.30 (13)	H15B—C15—H15C	109.5
C6—C1—C2—C3	-0.1 (2)	O2—C8—C9—C14	-171.77 (15)
C11—C1—C2—C3	176.25 (12)	C7—C8—C9—C14	14.6 (2)
C1—C2—C3—C4	-0.1 (3)	C14—C9—C10—C11	0.4 (2)
C2—C3—C4—C5	0.2 (3)	C8—C9—C10—C11	-175.55 (13)
C3—C4—C5—C6	-0.1 (3)	C9—C10—C11—C12	1.3 (2)
C2—C1—C6—C5	0.3 (2)	C9—C10—C11—N1	178.94 (12)
C11—C1—C6—C5	-176.05 (11)	O5—N1—C11—C10	148.61 (15)
C2—C1—C6—C7	179.26 (13)	O4—N1—C11—C10	-31.4 (2)
C11—C1—C6—C7	3.0 (2)	O5—N1—C11—C12	-33.7 (2)
C4—C5—C6—C1	-0.2 (2)	O4—N1—C11—C12	146.30 (16)
C4—C5—C6—C7	-179.23 (15)	C15—O3—C12—C13	-0.3 (2)
C1—C6—C7—O1	-145.86 (16)	C15—O3—C12—C11	-176.86 (15)
C5—C6—C7—O1	33.2 (2)	C10—C11—C12—O3	174.20 (14)
C1—C6—C7—C8	44.2 (2)	N1—C11—C12—O3	-3.4 (2)
C5—C6—C7—C8	-136.81 (14)	C10—C11—C12—C13	-2.6 (2)
O1—C7—C8—O2	-119.03 (16)	N1—C11—C12—C13	179.86 (14)
C6—C7—C8—O2	51.37 (19)	O3—C12—C13—C14	-174.26 (15)
O1—C7—C8—C9	55.0 (2)	C11—C12—C13—C14	2.3 (2)
C6—C7—C8—C9	-134.60 (14)	C12—C13—C14—C9	-0.7 (3)
O2—C8—C9—C10	4.0 (2)	C10—C9—C14—C13	-0.6 (2)
C7—C8—C9—C10	-169.64 (13)	C8—C9—C14—C13	175.07 (15)

Hydrogen-bond geometry ( $\text{\AA}$ ,  $^\circ$ )

$D-H\cdots A$	$D-H$	$H\cdots A$	$D\cdots A$	$D-H\cdots A$
C3—H3 $\cdots$ O2 <sup>i</sup>	0.93	2.53	3.318 (2)	143

Symmetry code: (i)  $-x, -y+1, -z+2$ .