

Acta Crystallographica Section E

## Structure Reports

Online

ISSN 1600-5368

# 5-Carboxy-2-isopropyl-1*H*-imidazol-3-ium-4-carboxylate monohydrate

 Chao-Jun Du,<sup>a,b\*</sup> Zheng-Hai Shi,<sup>a</sup> Li-Sheng Wang<sup>b</sup> and Chao-Ling Du<sup>c</sup>

<sup>a</sup>Department of Chemical and Biochemical Engineering, Nanyang Institute of Technology, 473004 Nanyang, Henan, People's Republic of China, <sup>b</sup>School of Chemical Engineering and Environment, Beijing Institute of Technology, 100081 Beijing, People's Republic of China, and <sup>c</sup>College of Science, Nanjing University of Aeronautics and Astronautics, Nanjing 211100, People's Republic of China  
Correspondence e-mail: chjdu@yahoo.com.cn

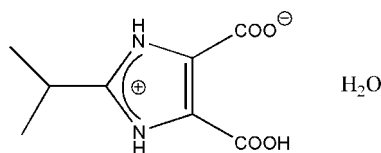
Received 1 June 2011; accepted 23 June 2011

Key indicators: single-crystal X-ray study;  $T = 298$  K; mean  $\sigma(\text{C}-\text{C}) = 0.002$  Å;  $R$  factor = 0.043;  $wR$  factor = 0.123; data-to-parameter ratio = 15.3.

In the title compound,  $\text{C}_8\text{H}_{10}\text{N}_2\text{O}_4 \cdot \text{H}_2\text{O}$ , the imidazole N atom is protonated and one of the carboxylate groups is deprotonated, forming a zwitterion. An intramolecular  $\text{O}-\text{H} \cdots \text{O}$  hydrogen bond occurs. The crystal structure is stabilized by intermolecular  $\text{N}-\text{H} \cdots \text{O}$  and  $\text{O}-\text{H} \cdots \text{O}$  hydrogen bonds. In addition, intermolecular  $\text{N}-\text{H} \cdots \text{O}$  and  $\text{O}-\text{H} \cdots \text{O}$  hydrogen bonds link the molecules into two-dimensional networks parallel to (10 $\bar{2}$ ).

## Related literature

For the use of related imidazoledicarboxylic acid structures in coordination chemistry, see: Sun *et al.* (2006); Merchan & Stoeckli-Evans (2007); Guo (2009); Wang & Qin (2010); Wang *et al.* (2010); Feng *et al.* (2010); Li *et al.* (2010). For the synthesis of the title compound, see: Alcalde *et al.* (1992).



## Experimental

### Crystal data

$\text{C}_8\text{H}_{10}\text{N}_2\text{O}_4 \cdot \text{H}_2\text{O}$   
 $M_r = 216.20$   
Monoclinic,  $P2_1/c$   
 $a = 7.828$  (2) Å

$b = 14.308$  (4) Å  
 $c = 8.930$  (2) Å  
 $\beta = 93.590$  (3)°  
 $V = 998.2$  (4) Å<sup>3</sup>

$Z = 4$   
Mo  $K\alpha$  radiation  
 $\mu = 0.12$  mm<sup>-1</sup>

$T = 298$  K  
 $0.40 \times 0.32 \times 0.28$  mm

### Data collection

Bruker SMART APEXII CCD  
area-detector diffractometer  
Absorption correction: multi-scan  
(*SADABS*; Bruker, 2005)  
 $T_{\text{min}} = 0.953$ ,  $T_{\text{max}} = 0.967$

4874 measured reflections  
2147 independent reflections  
1599 reflections with  $I > 2\sigma(I)$   
 $R_{\text{int}} = 0.028$

### Refinement

$R[F^2 > 2\sigma(F^2)] = 0.043$   
 $wR(F^2) = 0.123$   
 $S = 1.06$   
2147 reflections  
140 parameters

3 restraints  
H-atom parameters constrained  
 $\Delta\rho_{\text{max}} = 0.32$  e Å<sup>-3</sup>  
 $\Delta\rho_{\text{min}} = -0.19$  e Å<sup>-3</sup>

**Table 1**

Hydrogen-bond geometry (Å, °).

$D-\text{H} \cdots A$	$D-\text{H}$	$\text{H} \cdots A$	$D \cdots A$	$D-\text{H} \cdots A$
$\text{O3}-\text{H3} \cdots \text{O2}$	0.82	1.64	2.4576 (19)	175
$\text{N1}-\text{H1} \cdots \text{O5}$	0.86	1.83	2.6879 (19)	171
$\text{N2}-\text{H2} \cdots \text{O1}^{\text{i}}$	0.86	1.93	2.7619 (19)	162
$\text{O5}-\text{H5B} \cdots \text{O3}^{\text{ii}}$	0.85	2.03	2.8684 (19)	171
$\text{O5}-\text{H5A} \cdots \text{O4}^{\text{iii}}$	0.85	1.94	2.7857 (19)	173

Symmetry codes: (i)  $-x + 2, y + \frac{1}{2}, -z + \frac{1}{2}$ ; (ii)  $x - 1, -y + \frac{3}{2}, z - \frac{1}{2}$ ; (iii)  $-x + 2, y - \frac{1}{2}, -z + \frac{1}{2}$ .

Data collection: *APEX2* (Bruker, 2005); cell refinement: *S SAINT* (Bruker, 2005); data reduction: *S SAINT*; program(s) used to solve structure: *SHELXTL* (Sheldrick, 2008); program(s) used to refine structure: *SHELXTL*; molecular graphics: *SHELXTL*; software used to prepare material for publication: *SHELXTL*.

This work was supported financially by the National Natural Science Foundation of China (No. 1011104).

Supplementary data and figures for this paper are available from the IUCr electronic archives (Reference: LR2015).

## References

- Alcalde, E., Dinares, I., Perez-Garcia, L. & Roca, T. (1992). *Synthesis*, pp. 395–398.  
Bruker (2005). *APEX2*, *S SAINT* and *SADABS*. Bruker AXS Inc., Madison, Wisconsin, USA.  
Feng, X., Zhao, J. S., Liu, B., Wang, L. Y., Ng, S., Zhang, G., Wang, J. G., Shi, X. G. & Liu, Y. Y. (2010). *Cryst. Growth Des.* **10**, 1399–1408.  
Guo, Y.-P. (2009). *Acta Cryst.* **E65**, o22.  
Li, X., Wu, B. L., Wang, R. Y., Zhang, H. Y., Niu, C. Y. & Hong, H. W. (2010). *Inorg. Chem.* **49**, 2600–2613.  
Merchan, A. C. & Stoeckli-Evans, H. (2007). Private communication.  
Sheldrick, G. M. (2008). *Acta Cryst.* **A64**, 112–122.  
Sun, T., Ma, J.-P., Huang, R.-Q. & Dong, Y.-B. (2006). *Acta Cryst.* **E62**, o2751–o2752.  
Wang, J. G. & Qin, J. H. (2010). *Z. Kristallogr. New Cyst. Struct.* **225**, 325–326.  
Wang, S., Zhao, T. T., Li, G. H., Wojtas, L., Huo, Q. S., Eddaoudi, M. & Liu, Y. L. (2010). *J. Am. Chem. Soc.* **132**, 18038–18041.

## supporting information

*Acta Cryst.* (2011). E67, o1837 [doi:10.1107/S1600536811024767]

## 5-Carboxy-2-isopropyl-1*H*-imidazol-3-ium-4-carboxylate monohydrate

Chao-Jun Du, Zheng-Hai Shi, Li-Sheng Wang and Chao-Ling Du

### S1. Comment

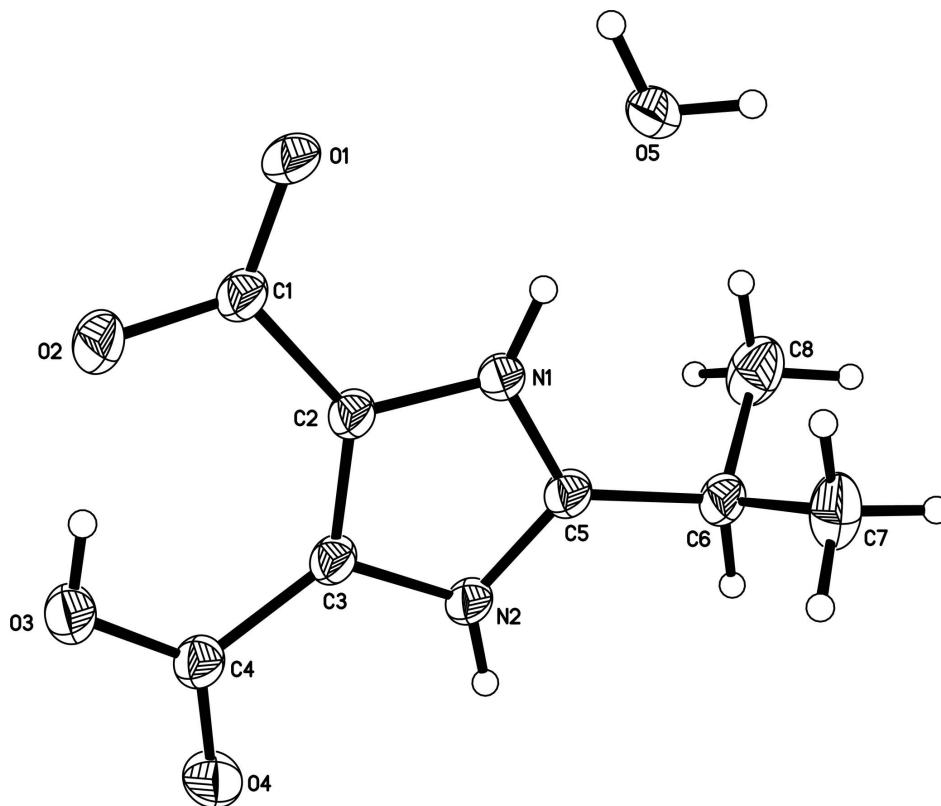
In the past the construction of metal complexes based on N-heterocyclic carboxylic acids has attracted much attention due to their intriguing topologies as well as their potential applications in many fields. Particular attention has been paid to the 1*H*-imidazole-4,5-dicarboxylic acid ligand and its analogs: (Sun *et al.*, 2006) have synthesized the 4-carboxy-2-(pyridinium-4-yl)-1*H*-imidazole-5-carboxylate monohydrate; Merchan *et al.* (2007) have prepared the dimethylammonium 4-carboxy-1*H*-imidazole-5-carboxylate; (Guo, 2009) have reported the 4-carboxy-2-methyl-1*H*-imidazole-5-carboxylate monohydrate and (Wang & Qin, 2010) have reported the dimethylammonium 4-carboxy-2-*n*-propyl-1*H*-imidazole-5-carboxylate. All of these 1*H*-imidazole-4,5-dicarboxylic acid and their analogs have been used as ligands to design metal complexes and most of them are proved ideal ligands (Wang *et al.*, 2010; Feng *et al.*, 2010; Li *et al.*, 2010). However, the crystal structure of 4-carboxy-2-isopropyl-1*H*-imidazole-5-carboxylate has not been yet determined. Keeping that in mind, we report here the preparation and crystal structure of the title compound. The crystal structure (Fig.2, Table1) is stabilized by two intramolecular and three intermolecular N—H···O and O—H···O hydrogen bonds which link the molecules into two-dimensional networks parallel to the (10 $\bar{2}$ ) planes.

### S2. Experimental

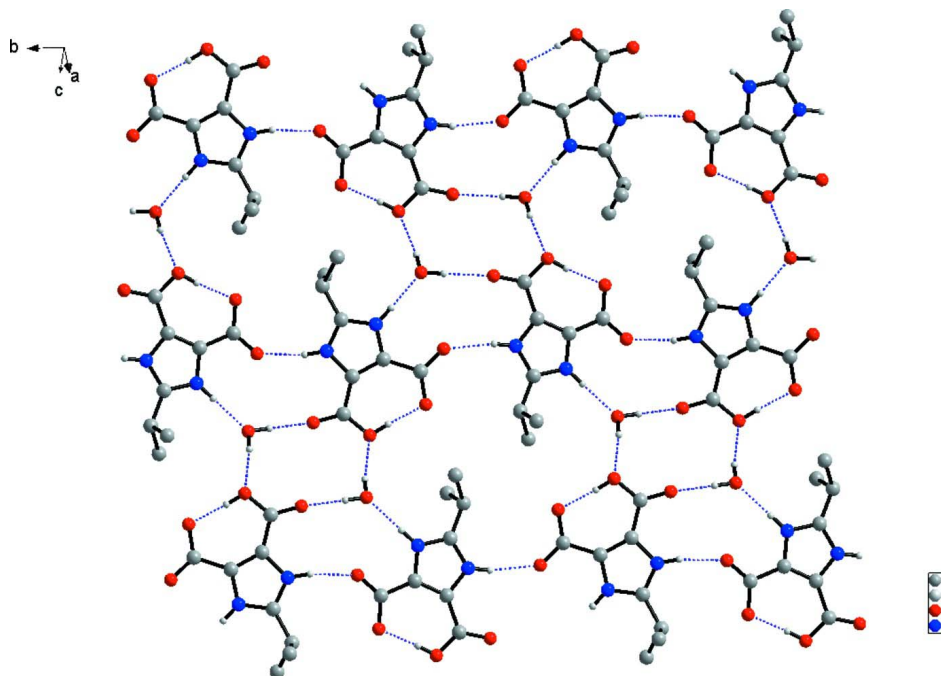
The title compound was synthesized according to the method reported in the literature (Alcalde *et al.*, 1992). Colourless single crystals suitable for X-ray diffraction were obtained by slow evaporation of a water solution of the compound.

### S3. Refinement

H atoms bonded to the water O atom were located in an electron density map and refined with distance restraints of O—H = 0.85 Å. Other H atoms were positioned geometrically and refined using a riding model, with C—H = 0.96—0.98 Å, N—H = 0.86 Å and O—H = 0.82 Å.  $U_{\text{iso}}(\text{H}) = kU_{\text{eq}}(\text{carrier atom})$ , where  $k = 1.2$  for N and C<sub>tertiary</sub> and 1.5 for O and C<sub>methyl</sub>.

**Figure 1**

The title compound with displacement ellipsoids drawn at the 30% probability level.

**Figure 2**

A view of the crystal structure. The H-atoms not included in hydrogen bonding have been omitted for clarity.

5-Carboxy-2-isopropyl-1*H*-imidazol-3-ium-4-carboxylate monohydrate*Crystal data*C<sub>8</sub>H<sub>10</sub>N<sub>2</sub>O<sub>4</sub>·H<sub>2</sub>O $M_r = 216.20$ Monoclinic,  $P2_1/c$ 

Hall symbol: -P 2ybc

 $a = 7.828$  (2) Å $b = 14.308$  (4) Å $c = 8.930$  (2) Å $\beta = 93.590$  (3)° $V = 998.2$  (4) Å<sup>3</sup> $Z = 4$  $F(000) = 456$  $D_x = 1.439$  Mg m<sup>-3</sup>Mo  $K\alpha$  radiation,  $\lambda = 0.71073$  Å

Cell parameters from 1379 reflections

 $\theta = 2.7$ – $25.1$ ° $\mu = 0.12$  mm<sup>-1</sup> $T = 298$  K

Block, colourless

 $0.40 \times 0.32 \times 0.28$  mm*Data collection*Bruker SMART APEXII CCD area-detector  
diffractometer

Radiation source: fine-focus sealed tube

Graphite monochromator

 $\varphi$  and  $\omega$  scansAbsorption correction: multi-scan  
(*SADABS*; Bruker, 2005) $T_{\min} = 0.953$ ,  $T_{\max} = 0.967$ 

4874 measured reflections

2147 independent reflections

1599 reflections with  $I > 2\sigma(I)$  $R_{\text{int}} = 0.028$  $\theta_{\text{max}} = 27.0$ °,  $\theta_{\text{min}} = 2.6$ ° $h = -9 \rightarrow 9$  $k = -17 \rightarrow 18$  $l = -11 \rightarrow 7$ *Refinement*Refinement on  $F^2$ 

Least-squares matrix: full

 $R[F^2 > 2\sigma(F^2)] = 0.043$  $wR(F^2) = 0.123$  $S = 1.06$ 

2147 reflections

140 parameters

3 restraints

Primary atom site location: structure-invariant  
direct methodsSecondary atom site location: difference Fourier  
mapHydrogen site location: inferred from  
neighbouring sites

H-atom parameters constrained

 $w = 1/[\sigma^2(F_o^2) + (0.059P)^2 + 0.133P]$ where  $P = (F_o^2 + 2F_c^2)/3$  $(\Delta/\sigma)_{\text{max}} < 0.001$  $\Delta\rho_{\text{max}} = 0.32$  e Å<sup>-3</sup> $\Delta\rho_{\text{min}} = -0.19$  e Å<sup>-3</sup>Extinction correction: *SHELXTL* (Sheldrick,  
2008),  $F_c^* = kF_c[1 + 0.001x F_c^2 \lambda^3 / \sin(2\theta)]^{-1/4}$ 

Extinction coefficient: 0.016 (3)

*Special details*

**Geometry.** All esds (except the esd in the dihedral angle between two l.s. planes) are estimated using the full covariance matrix. The cell esds are taken into account individually in the estimation of esds in distances, angles and torsion angles; correlations between esds in cell parameters are only used when they are defined by crystal symmetry. An approximate (isotropic) treatment of cell esds is used for estimating esds involving l.s. planes.

**Refinement.** Refinement of  $F^2$  against ALL reflections. The weighted R-factor  $wR$  and goodness of fit  $S$  are based on  $F^2$ , conventional R-factors  $R$  are based on  $F$ , with  $F$  set to zero for negative  $F^2$ . The threshold expression of  $F^2 > 2\sigma(F^2)$  is used only for calculating R-factors(gt) etc. and is not relevant to the choice of reflections for refinement. R-factors based on  $F^2$  are statistically about twice as large as those based on  $F$ , and R-factors based on ALL data will be even larger.

*Fractional atomic coordinates and isotropic or equivalent isotropic displacement parameters (Å<sup>2</sup>)*

	<i>x</i>	<i>y</i>	<i>z</i>	$U_{\text{iso}}^*/U_{\text{eq}}$
C4	1.2174 (2)	0.88114 (12)	0.4485 (2)	0.0397 (4)
C2	1.0189 (2)	0.76673 (11)	0.29253 (18)	0.0346 (4)
C3	1.0710 (2)	0.85223 (11)	0.34578 (19)	0.0350 (4)

C6	0.6833 (2)	0.91545 (12)	0.1177 (2)	0.0413 (4)
H6	0.6971	0.9835	0.1205	0.050*
C1	1.0889 (2)	0.67085 (11)	0.3136 (2)	0.0391 (4)
C5	0.8360 (2)	0.87217 (11)	0.19793 (19)	0.0366 (4)
C7	0.5240 (2)	0.89011 (17)	0.1978 (2)	0.0593 (6)
H7A	0.5139	0.8233	0.2031	0.089*
H7B	0.4249	0.9154	0.1435	0.089*
H7C	0.5328	0.9156	0.2975	0.089*
C8	0.6644 (3)	0.88445 (16)	-0.0461 (2)	0.0622 (6)
H8A	0.7620	0.9051	-0.0971	0.093*
H8B	0.5624	0.9113	-0.0934	0.093*
H8C	0.6571	0.8175	-0.0507	0.093*
O2	1.21461 (18)	0.66102 (9)	0.41079 (17)	0.0588 (4)
O4	1.24232 (16)	0.96417 (9)	0.47291 (15)	0.0527 (4)
O3	1.31065 (17)	0.81470 (9)	0.50578 (16)	0.0521 (4)
H3	1.2783	0.7647	0.4692	0.078*
O1	1.02199 (16)	0.60794 (8)	0.23815 (16)	0.0494 (4)
N1	0.87377 (17)	0.78132 (9)	0.20091 (15)	0.0368 (3)
H1	0.8162	0.7384	0.1529	0.044*
N2	0.95551 (16)	0.91583 (9)	0.28360 (16)	0.0372 (4)
H2	0.9601	0.9752	0.2981	0.045*
O5	0.66848 (18)	0.65027 (9)	0.07026 (18)	0.0638 (5)
H5B	0.5604	0.6549	0.0562	0.096*
H5A	0.6938	0.5927	0.0646	0.096*

*Atomic displacement parameters (Å<sup>2</sup>)*

	$U^{11}$	$U^{22}$	$U^{33}$	$U^{12}$	$U^{13}$	$U^{23}$
C4	0.0340 (9)	0.0334 (10)	0.0514 (10)	0.0000 (7)	0.0003 (7)	-0.0017 (8)
C2	0.0306 (8)	0.0264 (8)	0.0464 (9)	0.0013 (6)	-0.0014 (7)	0.0008 (7)
C3	0.0308 (8)	0.0258 (8)	0.0483 (10)	0.0020 (6)	0.0007 (7)	0.0004 (6)
C6	0.0366 (9)	0.0297 (9)	0.0565 (11)	0.0066 (7)	-0.0047 (7)	0.0023 (7)
C1	0.0346 (9)	0.0256 (9)	0.0566 (10)	0.0024 (7)	-0.0013 (7)	0.0012 (7)
C5	0.0336 (9)	0.0260 (8)	0.0499 (10)	0.0017 (7)	-0.0005 (7)	0.0001 (7)
C7	0.0405 (11)	0.0786 (16)	0.0581 (12)	0.0123 (10)	-0.0015 (9)	0.0096 (11)
C8	0.0637 (13)	0.0724 (16)	0.0502 (12)	0.0243 (12)	0.0007 (10)	0.0104 (10)
O2	0.0564 (9)	0.0348 (8)	0.0813 (10)	0.0108 (6)	-0.0258 (7)	0.0023 (6)
O4	0.0521 (8)	0.0331 (7)	0.0711 (9)	-0.0084 (6)	-0.0102 (6)	-0.0041 (6)
O3	0.0438 (8)	0.0372 (7)	0.0725 (9)	0.0015 (6)	-0.0178 (6)	-0.0031 (6)
O1	0.0450 (7)	0.0245 (6)	0.0775 (9)	0.0024 (5)	-0.0040 (6)	-0.0058 (6)
N1	0.0336 (7)	0.0242 (7)	0.0514 (8)	0.0017 (6)	-0.0070 (6)	-0.0022 (6)
N2	0.0334 (8)	0.0205 (7)	0.0570 (9)	0.0013 (5)	-0.0028 (6)	-0.0026 (6)
O5	0.0516 (8)	0.0357 (8)	0.0994 (11)	0.0046 (6)	-0.0323 (8)	-0.0154 (7)

*Geometric parameters (Å, °)*

C4—O4	1.221 (2)	C5—N2	1.327 (2)
C4—O3	1.285 (2)	C5—N1	1.333 (2)

---

C4—C3	1.481 (2)	C7—H7A	0.9600
C2—C3	1.366 (2)	C7—H7B	0.9600
C2—N1	1.374 (2)	C7—H7C	0.9600
C2—C1	1.485 (2)	C8—H8A	0.9600
C3—N2	1.375 (2)	C8—H8B	0.9600
C6—C5	1.489 (2)	C8—H8C	0.9600
C6—C7	1.520 (3)	O3—H3	0.8200
C6—C8	1.526 (3)	N1—H1	0.8600
C6—H6	0.9800	N2—H2	0.8600
C1—O1	1.222 (2)	O5—H5B	0.8500
C1—O2	1.279 (2)	O5—H5A	0.8501
O4—C4—O3	124.60 (17)	C6—C7—H7A	109.5
O4—C4—C3	119.41 (16)	C6—C7—H7B	109.5
O3—C4—C3	115.99 (15)	H7A—C7—H7B	109.5
C3—C2—N1	106.79 (14)	C6—C7—H7C	109.5
C3—C2—C1	133.16 (16)	H7A—C7—H7C	109.5
N1—C2—C1	120.04 (15)	H7B—C7—H7C	109.5
C2—C3—N2	106.13 (14)	C6—C8—H8A	109.5
C2—C3—C4	131.93 (15)	C6—C8—H8B	109.5
N2—C3—C4	121.93 (14)	H8A—C8—H8B	109.5
C5—C6—C7	109.35 (15)	C6—C8—H8C	109.5
C5—C6—C8	111.52 (14)	H8A—C8—H8C	109.5
C7—C6—C8	110.41 (17)	H8B—C8—H8C	109.5
C5—C6—H6	108.5	C4—O3—H3	109.5
C7—C6—H6	108.5	C5—N1—C2	109.54 (14)
C8—C6—H6	108.5	C5—N1—H1	125.2
O1—C1—O2	125.32 (16)	C2—N1—H1	125.2
O1—C1—C2	117.95 (16)	C5—N2—C3	110.08 (14)
O2—C1—C2	116.73 (15)	C5—N2—H2	125.0
N2—C5—N1	107.44 (14)	C3—N2—H2	125.0
N2—C5—C6	126.67 (15)	H5B—O5—H5A	107.5
N1—C5—C6	125.84 (15)		
N1—C2—C3—N2	-0.31 (17)	C7—C6—C5—N2	-106.3 (2)
C1—C2—C3—N2	178.46 (17)	C8—C6—C5—N2	131.29 (19)
N1—C2—C3—C4	179.79 (16)	C7—C6—C5—N1	71.0 (2)
C1—C2—C3—C4	-1.4 (3)	C8—C6—C5—N1	-51.3 (2)
O4—C4—C3—C2	175.88 (18)	N2—C5—N1—C2	1.04 (18)
O3—C4—C3—C2	-3.9 (3)	C6—C5—N1—C2	-176.75 (15)
O4—C4—C3—N2	-4.0 (2)	C3—C2—N1—C5	-0.44 (18)
O3—C4—C3—N2	176.25 (16)	C1—C2—N1—C5	-179.40 (15)
C3—C2—C1—O1	-172.81 (18)	N1—C5—N2—C3	-1.24 (18)
N1—C2—C1—O1	5.8 (2)	C6—C5—N2—C3	176.52 (16)
C3—C2—C1—O2	7.7 (3)	C2—C3—N2—C5	0.97 (18)
N1—C2—C1—O2	-173.71 (15)	C4—C3—N2—C5	-179.12 (15)

---

*Hydrogen-bond geometry (Å, °)*

<i>D</i> —H··· <i>A</i>	<i>D</i> —H	H··· <i>A</i>	<i>D</i> ··· <i>A</i>	<i>D</i> —H··· <i>A</i>
O3—H3···O2	0.82	1.64	2.4576 (19)	175
N1—H1···O5	0.86	1.83	2.6879 (19)	171
N2—H2···O1 <sup>i</sup>	0.86	1.93	2.7619 (19)	162
O5—H5B···O3 <sup>ii</sup>	0.85	2.03	2.8684 (19)	171
O5—H5A···O4 <sup>iii</sup>	0.85	1.94	2.7857 (19)	173

Symmetry codes: (i)  $-x+2, y+1/2, -z+1/2$ ; (ii)  $x-1, -y+3/2, z-1/2$ ; (iii)  $-x+2, y-1/2, -z+1/2$ .