

Acta Crystallographica Section E

Structure Reports

Online

ISSN 1600-5368

1-[3-(Hydroxymethyl)phenyl]-3-phenyl-urea

Hyeong Choi,^a Yong Suk Shim,^a Byung Hee Han,^a
Sung Kwon Kang^{a*} and Chang Keun Sung^b^aDepartment of Chemistry, Chungnam National University, Daejeon 305-764, Republic of Korea, and ^bDepartment of Food Science and Technology, Chungnam National University, Daejeon 305-764, Republic of Korea
Correspondence e-mail: skkang@cnu.ac.kr

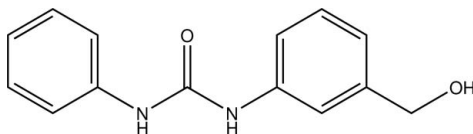
Received 8 July 2011; accepted 14 July 2011

Key indicators: single-crystal X-ray study; $T = 296$ K; mean $\sigma(\text{C}-\text{C}) = 0.002$ Å; R factor = 0.041; wR factor = 0.111; data-to-parameter ratio = 15.4.

In the title compound, $\text{C}_{14}\text{H}_{14}\text{N}_2\text{O}_2$, the dihedral angle between the benzene rings is 23.6 (1°). The H atoms of the urea NH groups are positioned *syn* to each other. In the crystal, intermolecular $\text{N}-\text{H}\cdots\text{O}$ and $\text{O}-\text{H}\cdots\text{O}$ hydrogen bonds link the molecules into a three-dimensional network.

Related literature

For general background to melanin, see: Kubo *et al.* (2000); Claus & Decker (2006). For the development of tyrosinase inhibitors, see: Khan *et al.* (2006); Kojima *et al.* (1995); Cabanes *et al.* (1994); Casañola-Martin *et al.* (2006); Son *et al.* (2000); Hong *et al.* (2008); Lee *et al.* (2007); Yi *et al.* (2010); Choi *et al.* (2010).



Experimental

Crystal data

$\text{C}_{14}\text{H}_{14}\text{N}_2\text{O}_2$	$V = 1205.90$ (11) Å ³
$M_r = 242.27$	$Z = 4$
Monoclinic, $P2_1/c$	Mo $K\alpha$ radiation
$a = 14.6207$ (8) Å	$\mu = 0.09$ mm ⁻¹
$b = 7.0692$ (4) Å	$T = 296$ K
$c = 12.4019$ (5) Å	$0.22 \times 0.21 \times 0.05$ mm
$\beta = 109.818$ (3)°	

Data collection

Bruker SMART CCD area-detector diffractometer	2694 independent reflections
9960 measured reflections	1664 reflections with $I > 2\sigma(I)$
	$R_{\text{int}} = 0.052$

Refinement

$R[F^2 > 2\sigma(F^2)] = 0.041$	H atoms treated by a mixture of independent and constrained refinement
$wR(F^2) = 0.111$	
$S = 0.93$	
2694 reflections	$\Delta\rho_{\text{max}} = 0.14$ e Å ⁻³
175 parameters	$\Delta\rho_{\text{min}} = -0.21$ e Å ⁻³

Table 1

Hydrogen-bond geometry (Å, °).

$D-\text{H}\cdots A$	$D-\text{H}$	$\text{H}\cdots A$	$D\cdots A$	$D-\text{H}\cdots A$
$\text{N7}-\text{H7}\cdots\text{O18}^i$	0.87 (2)	2.12 (2)	2.958 (2)	163 (1)
$\text{N10}-\text{H10}\cdots\text{O18}^i$	0.90 (2)	2.18 (2)	3.031 (2)	157 (1)
$\text{O18}-\text{H18}\cdots\text{O9}^{ii}$	0.86 (2)	1.91 (2)	2.763 (2)	175 (2)

Symmetry codes: (i) $-x + 1, -y + 1, -z$; (ii) $-x + 1, y + \frac{1}{2}, -z + \frac{1}{2}$.

Data collection: SMART (Bruker, 2002); cell refinement: SAINT (Bruker, 2002); data reduction: SAINT; program(s) used to solve structure: SHELXS97 (Sheldrick, 2008); program(s) used to refine structure: SHELXL97 (Sheldrick, 2008); molecular graphics: ORTEP-3 for Windows (Farrugia, 1997); software used to prepare material for publication: WinGX (Farrugia, 1999).

This work was undertaken under the 'Human Resource Development Center for Economic Region Leading Industry' Project, supported by the Ministry of Education, Science & Technology (MEST) and the National Research Foundation of Korea (NRF). Also, we wish to thank the DBIO company for partial support of this work.

Supplementary data and figures for this paper are available from the IUCr electronic archives (Reference: IM2305).

References

- Bruker (2002). SAINT and SMART. Bruker AXS Inc., Madison, Wisconsin, USA.
- Cabanes, J., Chazarra, S. & Garcia-Carmona, F. (1994). *J. Pharm. Pharmacol.* **46**, 982–985.
- Casañola-Martin, G. M., Khan, M. T. H., Marrero-Ponce, Y., Ather, A., Sultankhodzhaev, F. & Torrens, F. (2006). *Bioorg. Med. Chem. Lett.* **16**, 324–330.
- Choi, H., Lee, T., Han, B. H., Kang, S. K. & Sung, C. K. (2010). *Acta Cryst.* **E66**, o2088–o2089.
- Claus, H. & Decker, H. (2006). *Syst. Appl. Microbiol.* **29**, 3–14.
- Farrugia, L. J. (1997). *J. Appl. Cryst.* **30**, 565.
- Farrugia, L. J. (1999). *J. Appl. Cryst.* **32**, 837–838.
- Hong, W. K., Heo, J. Y., Han, B. H., Sung, C. K. & Kang, S. K. (2008). *Acta Cryst.* **E64**, o49.
- Khan, K. M., Maharvi, G. M., Khan, M. T. H., Shaikh, A. J., Perveen, S., Begum, S. & Choudhary, M. I. (2006). *Bioorg. Med. Chem.* **14**, 344–351.
- Kojima, S., Yamaguchi, H., Morita, K. & Ueno, Y. (1995). *Biol. Pharm. Bull.* **18**, 1076–1080.
- Kubo, I., Kinst-Hori, I., Chaudhuri, S. K., Kubo, J., Sánchez, Y. & Ogura, T. (2000). *Bioorg. Med. Chem.* **8**, 1749–1755.
- Lee, C. W., Son, E.-M., Kim, H. S., Xu, P., Batmunkh, T., Lee, B.-J. & Koo, K. A. (2007). *Bioorg. Med. Chem. Lett.* **17**, 5462–5464.
- Sheldrick, G. M. (2008). *Acta Cryst.* **A64**, 112–122.
- Son, S. M., Moon, K. D. & Lee, C. Y. (2000). *J. Agric. Food Chem.* **48**, 2071–2074.
- Yi, W., Cao, R., Peng, W., Wen, H., Yan, Q., Zhou, B., Ma, L. & Song, H. C. (2010). *Eur. J. Med. Chem.* **45**, 639–646.

supporting information

Acta Cryst. (2011). E67, o2094 [doi:10.1107/S1600536811028315]

1-[3-(Hydroxymethyl)phenyl]-3-phenylurea

Hyeong Choi, Yong Suk Shim, Byung Hee Han, Sung Kwon Kang and Chang Keun Sung

S1. Comment

Melanin plays a major role in human skin protection as well as in undesirable browning of fruits and vegetables (Kubo *et al.*, 2000). Tyrosinase is a key enzyme involved in the first stage of melanin synthesis. Tyrosinase catalyses two distinct reactions involving molecular oxygen, the hydroxylation of tyrosine to *L*-DOPA as a monophenolase and the oxidation of *L*-DOPA to dopaquinone as a diphenolase. Dopaquinone is non-enzymatically converted into dopachrome and dihydroxyindols, which induce the production of melanin pigments (Claus & Decker, 2006). Tyrosinase inhibitors have become increasingly important in both agriculture cosmetic industry and medication due to decreasing the excessive accumulation of pigmentation resulting from the enzyme action (Khan *et al.*, 2006). Numerous potential tyrosinase inhibitors have been discovered from natural and synthetic sources, such as ascorbic acid (Kojima *et al.*, 1995), kojic acid (Cabanes *et al.*, 1994), arbutin (Casañola-Martin *et al.*, 2006) and tropolone (Son *et al.*, 2000). They contain aromatic, methoxy, hydroxyl (Hong *et al.*, 2008; Lee *et al.*, 2007), aldehyde (Yi *et al.*, 2010), and amide (Choi *et al.*, 2010) groups in their structure. Nevertheless, some of their individual activities are either not potent enough to be considered of practical use or not compatible with safety regulations for food and cosmetic additives. Therefore, it is still necessary to search and develop novel tyrosinase inhibitors with potent activities and lower side effects. In our continuing search for tyrosinase inhibitors, we have synthesized the title compound, (I), from the reaction of 3-aminobenzyl alcohol and phenyl isocyanate under ambient condition. Here, the crystal structure of (I) is described (Fig.1).

The 3-hydroxymethylphenyl moiety is essentially planar with a mean deviation of 0.010 Å from the corresponding least-squares plane defined by the eight constituent atoms. The dihedral angle between the benzene rings is 23.6 (1) °. The presence of intermolecular N—H···O and O—H···O hydrogen bonds link the molecules into a three-dimensional network (Fig. 2, Table 1). The H atoms of the NH groups of urea are positioned *syn* to each other.

S2. Experimental

3-Aminobenzyl alcohol and phenyl isocyanate were purchased from Sigma Chemical Co. Solvents used for organic synthesis were redistilled before use. All other chemicals and solvents were of analytical grade and used without further purification. The title compound was prepared from the reaction of 3-aminobenzyl alcohol (0.2 g, 1.0 mmol) with phenyl isocyanate (0.23 g, 1.2 mmol) in acetonitrile (6 ml) with stirring. The reaction was completed within 30 min at room temperature under 1 atm of N₂ gas. The solvents were removed under reduced pressure. The solids collected and washed with dichloromethane. Removal of the solvent gave a white solid (73%, m.p. 446 K). Single crystals were obtained from an ethanolic solution by slow evaporation of the solvent at room temperature.

S3. Refinement

H atoms of NH and OH groups were located in a difference Fourier map and refined freely. Remaining H atoms were positioned geometrically and refined using a riding model with C—H = 0.93–0.97 Å, and with $U_{\text{iso}}(\text{H}) = 1.2U_{\text{eq}}(\text{C})$ for

aromatic and methylene H atoms.

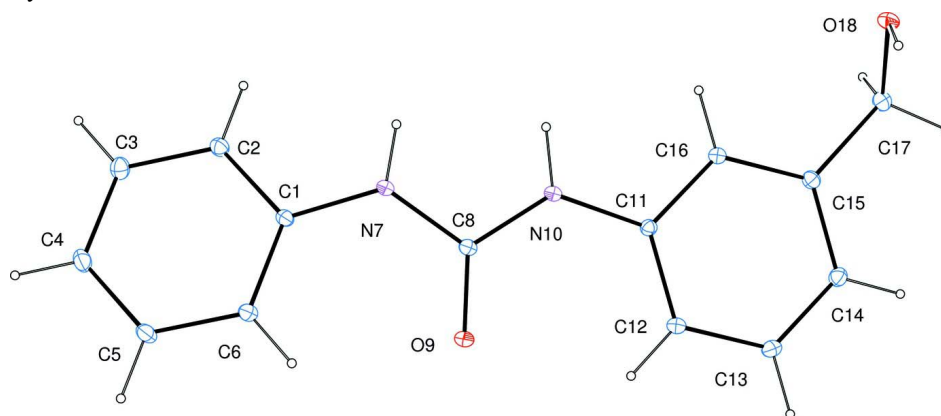


Figure 1

Molecular structure of (I), showing the atom-numbering scheme and 30% probability ellipsoids.

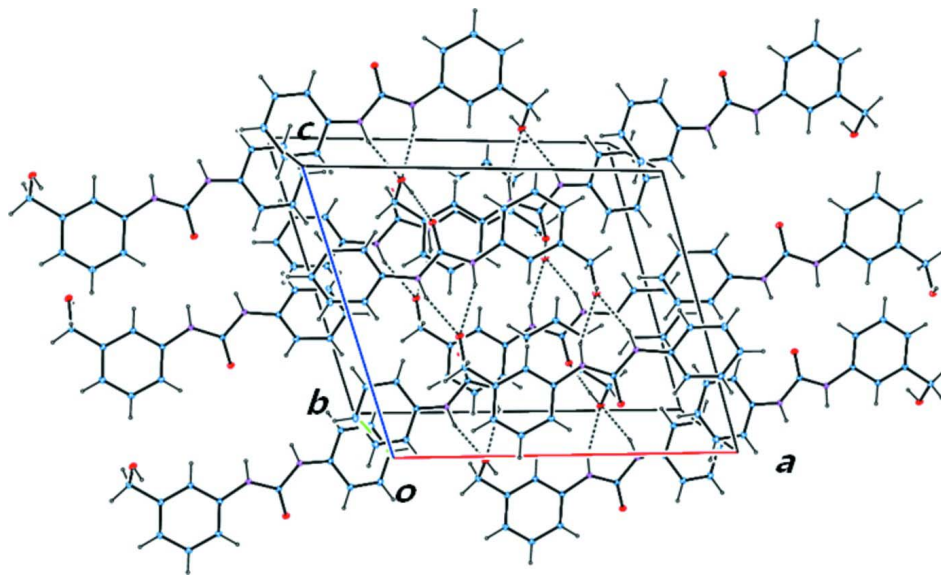


Figure 2

Part of the crystal structure of (I), showing 3-D network of molecules linked by intermolecular N—H...O and O—H...O hydrogen bonds (dashed lines).

1-[3-(Hydroxymethyl)phenyl]-3-phenylurea

Crystal data

$C_{14}H_{14}N_2O_2$

$M_r = 242.27$

Monoclinic, $P2_1/c$

Hall symbol: $-P\ 2_1/c$

$a = 14.6207(8)\ \text{\AA}$

$b = 7.0692(4)\ \text{\AA}$

$c = 12.4019(5)\ \text{\AA}$

$\beta = 109.818(3)^\circ$

$V = 1205.90(11)\ \text{\AA}^3$

$Z = 4$

$F(000) = 512$

$D_x = 1.334\ \text{Mg m}^{-3}$

Mo $K\alpha$ radiation, $\lambda = 0.71073\ \text{\AA}$

Cell parameters from 2624 reflections

$\theta = 3.2\text{--}28.0^\circ$

$\mu = 0.09\ \text{mm}^{-1}$

$T = 296\ \text{K}$

Plate, colourless

$0.22 \times 0.21 \times 0.05\ \text{mm}$

Data collection

Bruker SMART CCD area-detector
 diffractometer
 φ and ω scans
 9960 measured reflections
 2694 independent reflections
 1664 reflections with $I > 2\sigma(I)$

$R_{\text{int}} = 0.052$
 $\theta_{\text{max}} = 27.5^\circ$, $\theta_{\text{min}} = 3.0^\circ$
 $h = -15 \rightarrow 18$
 $k = -9 \rightarrow 6$
 $l = -16 \rightarrow 9$

Refinement

Refinement on F^2
 Least-squares matrix: full
 $R[F^2 > 2\sigma(F^2)] = 0.041$
 $wR(F^2) = 0.111$
 $S = 0.93$
 2694 reflections
 175 parameters
 0 restraints

H atoms treated by a mixture of independent
 and constrained refinement
 $w = 1/[\sigma^2(F_o^2) + (0.0584P)^2]$
 where $P = (F_o^2 + 2F_c^2)/3$
 $(\Delta/\sigma)_{\text{max}} < 0.001$
 $\Delta\rho_{\text{max}} = 0.14 \text{ e } \text{\AA}^{-3}$
 $\Delta\rho_{\text{min}} = -0.21 \text{ e } \text{\AA}^{-3}$

Special details

Geometry. All e.s.d.'s (except the e.s.d. in the dihedral angle between two l.s. planes) are estimated using the full covariance matrix. The cell e.s.d.'s are taken into account individually in the estimation of e.s.d.'s in distances, angles and torsion angles; correlations between e.s.d.'s in cell parameters are only used when they are defined by crystal symmetry. An approximate (isotropic) treatment of cell e.s.d.'s is used for estimating e.s.d.'s involving l.s. planes.

Fractional atomic coordinates and isotropic or equivalent isotropic displacement parameters (\AA^2)

	<i>x</i>	<i>y</i>	<i>z</i>	$U_{\text{iso}}^*/U_{\text{eq}}$
C1	0.13667 (11)	0.36148 (19)	0.11590 (11)	0.0385 (3)
C2	0.07277 (11)	0.2820 (2)	0.01677 (13)	0.0471 (4)
H2	0.0933	0.2595	-0.0453	0.057*
C3	-0.02094 (12)	0.2359 (2)	0.00922 (14)	0.0546 (4)
H3	-0.0632	0.1839	-0.0581	0.066*
C4	-0.05198 (12)	0.2664 (2)	0.10023 (15)	0.0581 (5)
H4	-0.1149	0.2343	0.0955	0.07*
C5	0.01144 (13)	0.3456 (3)	0.19916 (15)	0.0619 (5)
H5	-0.0093	0.3672	0.2611	0.074*
C6	0.10517 (12)	0.3932 (2)	0.20757 (12)	0.0524 (4)
H6	0.147	0.4464	0.2748	0.063*
N7	0.22912 (9)	0.41144 (18)	0.11382 (11)	0.0442 (3)
H7	0.2359 (11)	0.410 (2)	0.0471 (14)	0.049 (4)*
C8	0.31390 (11)	0.42001 (18)	0.20514 (11)	0.0381 (3)
O9	0.31723 (8)	0.41011 (14)	0.30535 (8)	0.0495 (3)
N10	0.39322 (9)	0.44032 (17)	0.17245 (10)	0.0436 (3)
H10	0.3815 (11)	0.444 (2)	0.0964 (15)	0.057 (5)*
C11	0.49231 (11)	0.43970 (18)	0.24098 (11)	0.0369 (3)
C12	0.52658 (11)	0.44241 (19)	0.35949 (12)	0.0454 (4)
H12	0.4834	0.4428	0.3999	0.055*
C13	0.62598 (12)	0.4446 (2)	0.41732 (13)	0.0516 (4)
H13	0.6491	0.4462	0.497	0.062*
C14	0.69114 (12)	0.4444 (2)	0.35936 (13)	0.0481 (4)

H14	0.7576	0.4466	0.3997	0.058*
C15	0.65760 (11)	0.44079 (19)	0.24059 (12)	0.0426 (4)
C16	0.55875 (11)	0.43755 (19)	0.18285 (12)	0.0423 (4)
H16	0.5359	0.4338	0.1032	0.051*
C17	0.72705 (12)	0.4432 (2)	0.17456 (14)	0.0554 (4)
H17A	0.7921	0.4684	0.2272	0.066*
H17B	0.7276	0.319	0.1415	0.066*
O18	0.70325 (8)	0.58030 (19)	0.08550 (9)	0.0559 (3)
H18	0.6949 (15)	0.685 (3)	0.1155 (18)	0.094 (8)*

Atomic displacement parameters (Å²)

	U^{11}	U^{22}	U^{33}	U^{12}	U^{13}	U^{23}
C1	0.0402 (9)	0.0407 (8)	0.0384 (7)	0.0035 (6)	0.0184 (6)	0.0040 (6)
C2	0.0471 (10)	0.0508 (9)	0.0476 (8)	0.0011 (7)	0.0216 (7)	-0.0047 (7)
C3	0.0484 (11)	0.0514 (10)	0.0634 (10)	-0.0044 (8)	0.0181 (8)	-0.0058 (8)
C4	0.0434 (11)	0.0665 (11)	0.0697 (11)	0.0000 (8)	0.0260 (9)	0.0141 (9)
C5	0.0524 (12)	0.0909 (13)	0.0525 (10)	0.0108 (10)	0.0309 (9)	0.0147 (9)
C6	0.0459 (11)	0.0747 (11)	0.0400 (8)	0.0060 (8)	0.0190 (7)	0.0029 (8)
N7	0.0395 (8)	0.0641 (9)	0.0327 (6)	-0.0023 (6)	0.0169 (6)	0.0007 (6)
C8	0.0433 (9)	0.0383 (8)	0.0361 (7)	-0.0014 (6)	0.0176 (6)	-0.0006 (6)
O9	0.0509 (7)	0.0673 (7)	0.0339 (5)	-0.0055 (5)	0.0193 (5)	-0.0011 (5)
N10	0.0411 (8)	0.0609 (8)	0.0315 (6)	-0.0035 (6)	0.0159 (5)	0.0003 (6)
C11	0.0389 (9)	0.0362 (8)	0.0353 (7)	-0.0021 (6)	0.0121 (6)	-0.0006 (6)
C12	0.0494 (11)	0.0538 (9)	0.0361 (7)	-0.0015 (7)	0.0185 (7)	-0.0032 (7)
C13	0.0521 (11)	0.0638 (11)	0.0354 (7)	0.0000 (8)	0.0103 (7)	-0.0011 (7)
C14	0.0424 (10)	0.0532 (10)	0.0452 (8)	0.0018 (7)	0.0103 (7)	-0.0009 (7)
C15	0.0436 (10)	0.0410 (8)	0.0455 (8)	0.0011 (7)	0.0181 (7)	-0.0005 (6)
C16	0.0421 (10)	0.0507 (9)	0.0354 (7)	-0.0029 (7)	0.0148 (6)	-0.0011 (6)
C17	0.0457 (11)	0.0697 (11)	0.0539 (9)	0.0013 (8)	0.0210 (8)	-0.0028 (8)
O18	0.0630 (8)	0.0707 (9)	0.0428 (6)	-0.0048 (6)	0.0294 (6)	-0.0059 (6)

Geometric parameters (Å, °)

C1—C6	1.3820 (19)	N10—H10	0.900 (17)
C1—C2	1.386 (2)	C11—C12	1.3829 (19)
C1—N7	1.4058 (19)	C11—C16	1.392 (2)
C2—C3	1.380 (2)	C12—C13	1.386 (2)
C2—H2	0.93	C12—H12	0.93
C3—C4	1.369 (2)	C13—C14	1.374 (2)
C3—H3	0.93	C13—H13	0.93
C4—C5	1.381 (2)	C14—C15	1.386 (2)
C4—H4	0.93	C14—H14	0.93
C5—C6	1.380 (2)	C15—C16	1.379 (2)
C5—H5	0.93	C15—C17	1.505 (2)
C6—H6	0.93	C16—H16	0.93
N7—C8	1.3678 (19)	C17—O18	1.421 (2)
N7—H7	0.866 (17)	C17—H17A	0.97

C8—O9	1.2291 (15)	C17—H17B	0.97
C8—N10	1.3597 (18)	O18—H18	0.86 (2)
N10—C11	1.4094 (18)		
C6—C1—C2	118.88 (14)	C11—N10—H10	115.1 (10)
C6—C1—N7	124.41 (14)	C12—C11—C16	119.05 (14)
C2—C1—N7	116.66 (12)	C12—C11—N10	124.67 (13)
C3—C2—C1	120.73 (14)	C16—C11—N10	116.28 (12)
C3—C2—H2	119.6	C11—C12—C13	119.26 (14)
C1—C2—H2	119.6	C11—C12—H12	120.4
C4—C3—C2	120.39 (16)	C13—C12—H12	120.4
C4—C3—H3	119.8	C14—C13—C12	121.38 (14)
C2—C3—H3	119.8	C14—C13—H13	119.3
C3—C4—C5	119.08 (15)	C12—C13—H13	119.3
C3—C4—H4	120.5	C13—C14—C15	119.84 (15)
C5—C4—H4	120.5	C13—C14—H14	120.1
C6—C5—C4	121.08 (15)	C15—C14—H14	120.1
C6—C5—H5	119.5	C16—C15—C14	118.90 (14)
C4—C5—H5	119.5	C16—C15—C17	119.96 (13)
C5—C6—C1	119.84 (15)	C14—C15—C17	121.13 (14)
C5—C6—H6	120.1	C15—C16—C11	121.56 (13)
C1—C6—H6	120.1	C15—C16—H16	119.2
C8—N7—C1	127.08 (12)	C11—C16—H16	119.2
C8—N7—H7	115.2 (10)	O18—C17—C15	113.44 (13)
C1—N7—H7	116.0 (10)	O18—C17—H17A	108.9
O9—C8—N10	124.20 (14)	C15—C17—H17A	108.9
O9—C8—N7	123.29 (13)	O18—C17—H17B	108.9
N10—C8—N7	112.51 (12)	C15—C17—H17B	108.9
C8—N10—C11	128.77 (12)	H17A—C17—H17B	107.7
C8—N10—H10	115.9 (10)	C17—O18—H18	106.6 (14)

Hydrogen-bond geometry (Å, °)

<i>D</i> —H... <i>A</i>	<i>D</i> —H	H... <i>A</i>	<i>D</i> ... <i>A</i>	<i>D</i> —H... <i>A</i>
N7—H7...O18 ⁱ	0.87 (2)	2.12 (2)	2.958 (2)	163 (1)
N10—H10...O18 ⁱ	0.90 (2)	2.18 (2)	3.031 (2)	157 (1)
O18—H18...O9 ⁱⁱ	0.86 (2)	1.91 (2)	2.763 (2)	175 (2)

Symmetry codes: (i) $-x+1, -y+1, -z$; (ii) $-x+1, y+1/2, -z+1/2$.