

Acta Crystallographica Section E

## Structure Reports

Online

ISSN 1600-5368

## Morpholin-4-ium morpholine-4-carbodithioate

Ana C. Mafud,\* Edgar A. Sanches and Maria Teresa Gambardella

Instituto de Química de São Carlos, Universidade de São Paulo, Av. Trabalhador São-carlense, 400, Caixa Postal 780, 13560-970, São Carlos SP, Brazil  
Correspondence e-mail: mafud@iqsc.usp.br

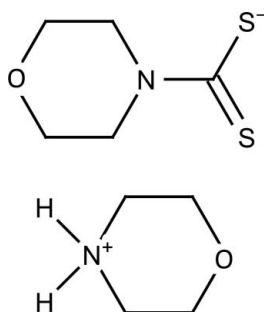
Received 14 June 2011; accepted 1 July 2011

Key indicators: single-crystal X-ray study;  $T = 290$  K; mean  $\sigma(\text{C}-\text{C}) = 0.005$  Å;  $R$  factor = 0.050;  $wR$  factor = 0.145; data-to-parameter ratio = 18.4.

The title compound,  $\text{C}_4\text{H}_{10}\text{NO}^+\cdot\text{C}_5\text{H}_8\text{NOS}_2^-$ , is built up of a morpholinium cation and a dithiocarbamate anion. In the crystal, two structurally independent formula units are linked via  $\text{N}-\text{H}\cdots\text{S}$  hydrogen bonds, forming an inversion dimer, with graph-set motif  $R_4^4(12)$ .

## Related literature

For the crystal structures of similar compounds, see: Wahlberg (1979, 1980, 1981); Mafud & Gambardella (2011a,b). For graph-set analysis, see: Bernstein *et al.* (1995). For puckering parameters, see: Cremer & Pople (1975).



## Experimental

## Crystal data

$\text{C}_4\text{H}_{10}\text{NO}^+\cdot\text{C}_5\text{H}_8\text{NOS}_2^-$   
 $M_r = 250.37$   
Monoclinic,  $P2_1/c$   
 $a = 7.938$  (5) Å  
 $b = 18.3232$  (15) Å  
 $c = 8.8260$  (5) Å  
 $\beta = 110.021$  (5)°

$V = 1206.2$  (8) Å<sup>3</sup>  
 $Z = 4$   
Mo  $K\alpha$  radiation  
 $\mu = 0.43$  mm<sup>-1</sup>  
 $T = 290$  K  
 $0.3 \times 0.15 \times 0.15$  mm

## Data collection

Enraf–Nonius TurboCAD-4 diffractometer  
Absorption correction:  $\psi$  scan (North *et al.*, 1968)  
 $T_{\min} = 0.795$ ,  $T_{\max} = 0.902$   
3705 measured reflections

3487 independent reflections  
2021 reflections with  $I > 2\sigma(I)$   
 $R_{\text{int}} = 0.041$   
3 standard reflections every 120 min  
intensity decay: 5%

## Refinement

$R[F^2 > 2\sigma(F^2)] = 0.050$   
 $wR(F^2) = 0.145$   
 $S = 1.00$   
3487 reflections

190 parameters  
All H-atom parameters refined  
 $\Delta\rho_{\max} = 0.56$  e Å<sup>-3</sup>  
 $\Delta\rho_{\min} = -0.39$  e Å<sup>-3</sup>

Table 1

Hydrogen-bond geometry (Å, °).

| $D-H\cdots A$                           | $D-H$    | $H\cdots A$ | $D\cdots A$ | $D-H\cdots A$ |
|---|----------|-------------|-------------|---------------|
| $\text{N2}-\text{H1N}\cdots\text{S1}$   | 0.86 (4) | 2.47 (4)    | 3.284 (3)   | 158 (3)       |
| $\text{N2}-\text{H2N}\cdots\text{S1}^i$ | 0.91 (4) | 2.75 (4)    | 3.453 (2)   | 135 (3)       |
| $\text{N2}-\text{H2N}\cdots\text{S2}^i$ | 0.91 (4) | 2.39 (3)    | 3.221 (2)   | 151 (3)       |

Symmetry code: (i)  $-x + 1, -y, -z + 2$ .

Data collection: *CAD-4 EXPRESS* (Enraf–Nonius, 1989); cell refinement: *CAD-4 EXPRESS*; data reduction: *XCAD4* (Harms & Wocadlo, 1995); program(s) used to solve structure: *SIR92* (Altomare *et al.*, 1994); program(s) used to refine structure: *SHELXL97* (Sheldrick, 2008); molecular graphics: *ORTEP-3 for Windows* (Farrugia, 1997) and *Mercury* (Macrae *et al.*, 2006); software used to prepare material for publication: *WinGX* (Farrugia, 1999), *PLATON* (Spek, 2009) and *pubCIF* (Westrip, 2010).

We are grateful to the Instituto de Química de São Carlos and the Universidade de São Paulo for supporting this study.

Supplementary data and figures for this paper are available from the IUCr electronic archives (Reference: SU2285).

## References

- Altomare, A., Casciarano, G., Giacovazzo, C., Guagliardi, A., Burla, M. C., Polidori, G. & Camalli, M. (1994). *J. Appl. Cryst.* **27**, 435.  
Bernstein, J., Davis, R. E., Shimon, L. & Chang, N.-L. (1995). *Angew. Chem. Int. Ed. Engl.* **34**, 1555–1573.  
Cremer, D. & Pople, J. A. (1975). *J. Am. Chem. Soc.* **97**, 1354–1358.  
Enraf–Nonius (1989). *CAD-4 EXPRESS*. Enraf–Nonius, Delft, The Netherlands.  
Farrugia, L. J. (1997). *J. Appl. Cryst.* **30**, 565.  
Farrugia, L. J. (1999). *J. Appl. Cryst.* **32**, 837–838.  
Harms, K. & Wocadlo, S. (1995). *XCAD4*. University of Marburg, Germany.  
Macrae, C. F., Edgington, P. R., McCabe, P., Pidcock, E., Shields, G. P., Taylor, R., Towler, M. & van de Streek, J. (2006). *J. Appl. Cryst.* **39**, 453–457.  
Mafud, A. C. & Gambardella, M. T. P. (2011a). *Acta Cryst.* **E67**, o879.  
Mafud, A. C. & Gambardella, M. T. P. (2011b). *Acta Cryst.* **E67**, m942.  
North, A. C. T., Phillips, D. C. & Mathews, F. S. (1968). *Acta Cryst.* **A24**, 351–359.  
Sheldrick, G. M. (2008). *Acta Cryst.* **A64**, 112–122.  
Spek, A. L. (2009). *Acta Cryst.* **D65**, 148–155.  
Wahlberg, A. (1979). *Acta Cryst.* **B35**, 485–487.  
Wahlberg, A. (1980). *Acta Cryst.* **B36**, 2099–2103.  
Wahlberg, A. (1981). *Acta Cryst.* **B37**, 1240–1244.  
Westrip, S. P. (2010). *J. Appl. Cryst.* **43**, 920–925.

## supporting information

*Acta Cryst.* (2011). E67, o2008 [doi:10.1107/S1600536811026286]

**Morpholin-4-ium morpholine-4-carbodithioate**

Ana C. Mafud, Edgar A. Sanches and Maria Teresa Gambardella

**S1. Comment**

The first thiocarbamic acid-ammonium salt, pyrrolidinedithiocarbamic acid-pyrrolidineammonium salt, was reported on previously by (Wahlberg, 1979; 1980; 1981). Our group have recently described the synthesis and crystal structures of ammonium piperidine-1-carbodithioate and sodium piperidine-1-carbodithioate dihydrate (Mafud & Gambardella, 2011*a,b*). Continuing our research on this subject, we report herein on the synthesis and crystal structure of the title salt, 1-Morpholinedithiocarbamic Acid-morpholineammonium Salt.

In the molecular structure of the title compound (Fig. 1) there is an intramolecular hydrogen bond involving the cation, via the nitrogen atom from amine group, and the anion, via the sulfur atom of dithiocarbamate (Table 1). The six membered rings have chair conformations, with puckering parameters are  $Q=0.554$  (3) Å,  $\theta = 177.4$  (3)°,  $\varphi_2 = 168$  (6)° for the anion and  $Q = 0.566$  (3) Å,  $\theta = 1.4$  (4)°,  $\varphi_2 = 60$  (14)° for the cation (Cremer & Pople, 1975).

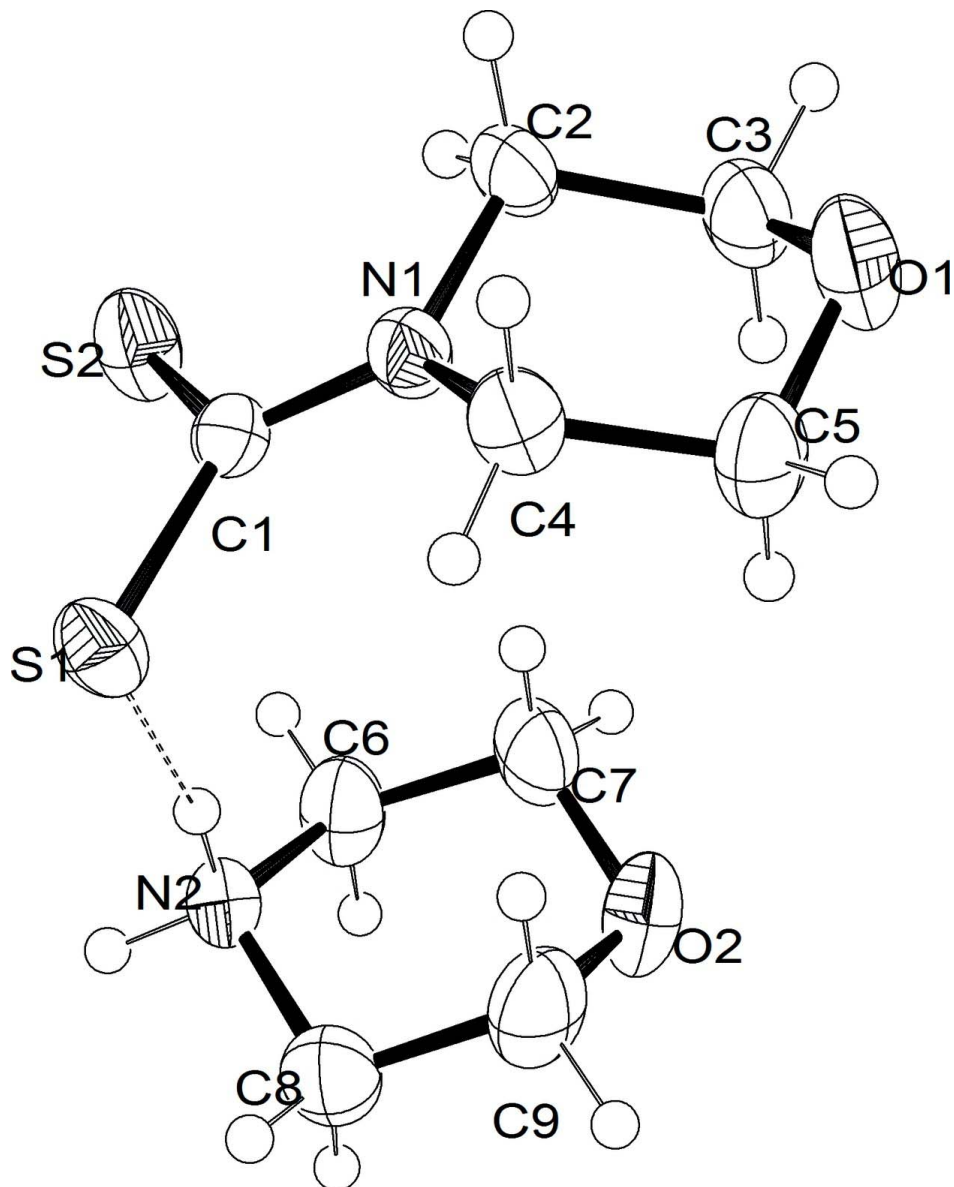
In the crystal two structurally independent formula units are linked via N—H···S hydrogen bonds (Fig. 2, Table 1), to form a dimer arrangement centered about an inversion center, with graph-set  $R^4_4(12)$  [Bernstein *et al.*, 1995].

**S2. Experimental**

The  $\text{RNH}_2^+$  salt of the morpholinedithiocarbamate was prepared by slow addition of 0.1 mol of  $\text{CS}_2$  to a cold solution (ice bath) containing 0.2 mol of the morpholien amine dissolved in 30 ml of ethanol-water 1:1 (v/v) medium. The obtained solid was recrystallized from ethanol-water 1:1 (v/v) and dried in a vacuum oven at 323 K for 8 h. Colourless single crystals, suitable for X-ray diffraction analysis, were obtained. On heating they sublimed and decomposed.

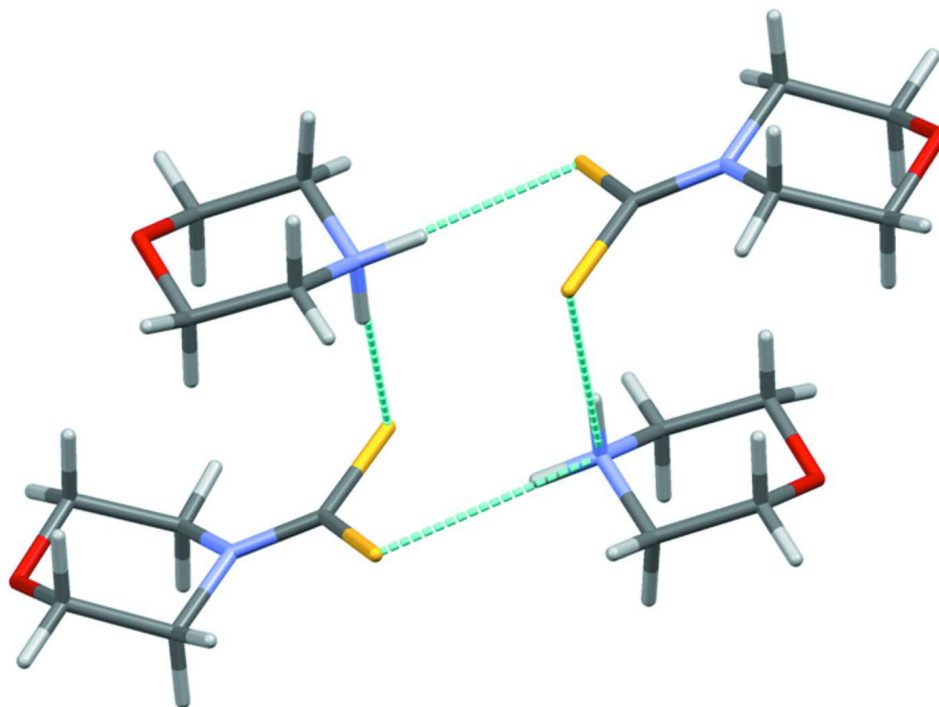
**S3. Refinement**

All H-atom positions were located in a difference Fourier map and were freely refined.



**Figure 1**

Perspective view of the molecular structure of the title salt, with numbering scheme and displacement ellipsoids drawn at the 50% probability level.

**Figure 2**

Perspective view of the N-H...S hydrogen bonded (dashed cyan lines) dimer in the title salt, with graph-set  $R_4^4(12)$ .

### Morpholin-4-ium morpholine-4-carbodithioate

#### Crystal data

$C_4H_{10}NO^+ \cdot C_5H_8NOS_2^-$

$M_r = 250.37$

Monoclinic,  $P2_1/c$

Hall symbol: -P 2ybc

$a = 7.938 (5) \text{ \AA}$

$b = 18.3232 (15) \text{ \AA}$

$c = 8.8260 (5) \text{ \AA}$

$\beta = 110.021 (5)^\circ$

$V = 1206.2 (8) \text{ \AA}^3$

$Z = 4$

$F(000) = 536$

$D_x = 1.379 \text{ Mg m}^{-3}$

Mo  $K\alpha$  radiation,  $\lambda = 0.71073 \text{ \AA}$

Cell parameters from 15 reflections

$\theta = 5.5\text{--}15.9^\circ$

$\mu = 0.43 \text{ mm}^{-1}$

$T = 290 \text{ K}$

Prism, colourless

$0.3 \times 0.15 \times 0.15 \text{ mm}$

#### Data collection

Enraf-Nonius TurboCAD-4  
diffractometer

Graphite monochromator  
non-profiled  $\omega/2\theta$  scans

Absorption correction:  $\psi$  scan  
(North *et al.*, 1968)

$T_{\min} = 0.795$ ,  $T_{\max} = 0.902$

3705 measured reflections

3487 independent reflections

2021 reflections with  $I > 2\sigma(I)$

$R_{\text{int}} = 0.041$

$\theta_{\max} = 30.0^\circ$ ,  $\theta_{\min} = 2.7^\circ$

$h = 0 \rightarrow 11$

$k = 0 \rightarrow 25$

$l = -12 \rightarrow 11$

3 standard reflections every 120 min

intensity decay: 5%

Refinement

Refinement on  $F^2$   
 Least-squares matrix: full  
 $R[F^2 > 2\sigma(F^2)] = 0.050$   
 $wR(F^2) = 0.145$   
 $S = 1.00$   
 3487 reflections  
 190 parameters  
 0 restraints  
 Primary atom site location: structure-invariant  
 direct methods

Secondary atom site location: difference Fourier  
 map  
 Hydrogen site location: inferred from  
 neighbouring sites  
 All H-atom parameters refined  
 $w = 1/[\sigma^2(F_o^2) + (0.0759P)^2]$   
 where  $P = (F_o^2 + 2F_c^2)/3$   
 $(\Delta/\sigma)_{\max} = 0.004$   
 $\Delta\rho_{\max} = 0.56 \text{ e } \text{Å}^{-3}$   
 $\Delta\rho_{\min} = -0.39 \text{ e } \text{Å}^{-3}$

Special details

**Geometry.** All e.s.d.'s (except the e.s.d. in the dihedral angle between two l.s. planes) are estimated using the full covariance matrix. The cell e.s.d.'s are taken into account individually in the estimation of e.s.d.'s in distances, angles and torsion angles; correlations between e.s.d.'s in cell parameters are only used when they are defined by crystal symmetry. An approximate (isotropic) treatment of cell e.s.d.'s is used for estimating e.s.d.'s involving l.s. planes.

**Refinement.** Refinement of  $F^2$  against ALL reflections. The weighted  $R$ -factor  $wR$  and goodness of fit  $S$  are based on  $F^2$ , conventional  $R$ -factors  $R$  are based on  $F$ , with  $F$  set to zero for negative  $F^2$ . The threshold expression of  $F^2 > \sigma(F^2)$  is used only for calculating  $R$ -factors(gt) etc. and is not relevant to the choice of reflections for refinement.  $R$ -factors based on  $F^2$  are statistically about twice as large as those based on  $F$ , and  $R$ -factors based on ALL data will be even larger.

Fractional atomic coordinates and isotropic or equivalent isotropic displacement parameters ( $\text{Å}^2$ )

|     | <i>x</i>     | <i>y</i>     | <i>z</i>    | $U_{\text{iso}}^*/U_{\text{eq}}$ |
|-----|--------------|--------------|-------------|----------------------------------|
| S1  | 0.20657 (9)  | 0.07843 (4)  | 0.84253 (7) | 0.03827 (19)                     |
| S2  | 0.34115 (10) | -0.02991 (4) | 0.66044 (8) | 0.0448 (2)                       |
| O2  | 0.7186 (3)   | 0.20279 (12) | 0.8050 (3)  | 0.0558 (5)                       |
| O1  | 0.1390 (3)   | 0.19488 (11) | 0.2852 (2)  | 0.0547 (6)                       |
| N1  | 0.1685 (3)   | 0.09147 (11) | 0.5323 (2)  | 0.0344 (5)                       |
| N2  | 0.6455 (3)   | 0.09075 (12) | 0.9933 (3)  | 0.0352 (5)                       |
| C1  | 0.2314 (3)   | 0.04987 (13) | 0.6648 (3)  | 0.0301 (5)                       |
| C2  | 0.1739 (4)   | 0.06872 (15) | 0.3746 (3)  | 0.0425 (6)                       |
| C3  | 0.2422 (4)   | 0.13083 (16) | 0.2981 (4)  | 0.0458 (7)                       |
| C4  | 0.0698 (4)   | 0.15994 (15) | 0.5227 (3)  | 0.0390 (6)                       |
| C5  | 0.1441 (5)   | 0.21801 (15) | 0.4412 (4)  | 0.0472 (7)                       |
| C6  | 0.7585 (5)   | 0.07751 (17) | 0.8933 (4)  | 0.0478 (7)                       |
| C7  | 0.7033 (5)   | 0.12905 (18) | 0.7531 (4)  | 0.0506 (7)                       |
| C8  | 0.6555 (5)   | 0.16802 (17) | 1.0443 (4)  | 0.0515 (7)                       |
| C9  | 0.6074 (5)   | 0.21637 (17) | 0.8988 (4)  | 0.0556 (8)                       |
| H1N | 0.537 (5)    | 0.079 (2)    | 0.936 (4)   | 0.067*                           |
| H2N | 0.681 (4)    | 0.063 (2)    | 1.085 (4)   | 0.067*                           |
| H2A | 0.050 (4)    | 0.053 (2)    | 0.304 (4)   | 0.067*                           |
| H2B | 0.248 (4)    | 0.027 (2)    | 0.394 (4)   | 0.067*                           |
| H3A | 0.368 (4)    | 0.1441 (19)  | 0.369 (4)   | 0.067*                           |
| H3B | 0.229 (4)    | 0.1177 (19)  | 0.187 (4)   | 0.067*                           |
| H4A | -0.053 (5)   | 0.1527 (19)  | 0.457 (4)   | 0.067*                           |
| H4B | 0.088 (5)    | 0.1751 (18)  | 0.628 (4)   | 0.067*                           |
| H5A | 0.274 (5)    | 0.2265 (19)  | 0.512 (4)   | 0.067*                           |
| H5B | 0.073 (4)    | 0.261 (2)    | 0.419 (4)   | 0.067*                           |

|     |           |             |           |        |
|-----|-----------|-------------|-----------|--------|
| H6A | 0.887 (5) | 0.0884 (19) | 0.966 (4) | 0.067* |
| H6B | 0.748 (4) | 0.031 (2)   | 0.863 (4) | 0.067* |
| H7A | 0.582 (5) | 0.1189 (19) | 0.685 (4) | 0.067* |
| H7B | 0.786 (4) | 0.125 (2)   | 0.697 (4) | 0.067* |
| H8A | 0.791 (5) | 0.1709 (19) | 1.118 (4) | 0.067* |
| H8B | 0.590 (5) | 0.1737 (19) | 1.108 (4) | 0.067* |
| H9A | 0.481 (5) | 0.2048 (19) | 0.826 (4) | 0.067* |
| H9B | 0.628 (5) | 0.265 (2)   | 0.933 (4) | 0.067* |

*Atomic displacement parameters (Å<sup>2</sup>)*

|    | $U^{11}$    | $U^{22}$    | $U^{33}$    | $U^{12}$     | $U^{13}$    | $U^{23}$     |
|----|-------------|-------------|-------------|--------------|-------------|--------------|
| S1 | 0.0437 (4)  | 0.0446 (4)  | 0.0318 (3)  | 0.0029 (3)   | 0.0197 (3)  | 0.0001 (3)   |
| S2 | 0.0620 (5)  | 0.0378 (4)  | 0.0438 (4)  | 0.0134 (3)   | 0.0300 (3)  | 0.0079 (3)   |
| O2 | 0.0626 (14) | 0.0449 (12) | 0.0676 (13) | -0.0052 (10) | 0.0324 (11) | 0.0156 (10)  |
| O1 | 0.0774 (15) | 0.0474 (12) | 0.0479 (11) | 0.0132 (10)  | 0.0324 (10) | 0.0173 (9)   |
| N1 | 0.0462 (13) | 0.0290 (10) | 0.0307 (10) | 0.0011 (8)   | 0.0165 (9)  | 0.0002 (8)   |
| N2 | 0.0395 (12) | 0.0350 (11) | 0.0336 (10) | -0.0027 (9)  | 0.0157 (9)  | 0.0043 (8)   |
| C1 | 0.0302 (11) | 0.0313 (11) | 0.0309 (11) | -0.0057 (9)  | 0.0131 (9)  | -0.0006 (9)  |
| C2 | 0.0670 (19) | 0.0366 (14) | 0.0269 (12) | -0.0020 (13) | 0.0199 (12) | -0.0014 (10) |
| C3 | 0.0606 (19) | 0.0446 (16) | 0.0388 (14) | 0.0013 (14)  | 0.0254 (13) | 0.0046 (12)  |
| C4 | 0.0445 (16) | 0.0373 (14) | 0.0382 (13) | 0.0062 (11)  | 0.0180 (12) | 0.0031 (11)  |
| C5 | 0.0602 (19) | 0.0332 (14) | 0.0537 (17) | 0.0073 (13)  | 0.0267 (14) | 0.0094 (12)  |
| C6 | 0.0612 (19) | 0.0389 (15) | 0.0571 (17) | 0.0089 (14)  | 0.0379 (15) | 0.0054 (13)  |
| C7 | 0.0625 (19) | 0.0549 (18) | 0.0460 (16) | -0.0029 (15) | 0.0336 (15) | 0.0057 (13)  |
| C8 | 0.071 (2)   | 0.0428 (16) | 0.0476 (16) | 0.0035 (14)  | 0.0285 (15) | -0.0029 (12) |
| C9 | 0.071 (2)   | 0.0342 (15) | 0.069 (2)   | 0.0078 (15)  | 0.0329 (17) | 0.0062 (14)  |

*Geometric parameters (Å, °)*

|        |           |        |           |
|--------|-----------|--------|-----------|
| S1—C1  | 1.728 (2) | C3—H3B | 0.98 (4)  |
| S2—C1  | 1.709 (2) | C4—C5  | 1.512 (4) |
| O2—C7  | 1.418 (4) | C4—H4A | 0.96 (3)  |
| O2—C9  | 1.423 (4) | C4—H4B | 0.93 (3)  |
| O1—C3  | 1.414 (3) | C5—H5A | 1.02 (3)  |
| O1—C5  | 1.428 (3) | C5—H5B | 0.94 (4)  |
| N1—C1  | 1.341 (3) | C6—C7  | 1.498 (4) |
| N1—C4  | 1.466 (3) | C6—H6A | 1.02 (3)  |
| N1—C2  | 1.468 (3) | C6—H6B | 0.89 (4)  |
| N2—C6  | 1.478 (3) | C7—H7A | 0.96 (3)  |
| N2—C8  | 1.480 (4) | C7—H7B | 0.95 (4)  |
| N2—H1N | 0.86 (4)  | C8—C9  | 1.498 (4) |
| N2—H2N | 0.91 (4)  | C8—H8A | 1.05 (3)  |
| C2—C3  | 1.515 (4) | C8—H8B | 0.90 (3)  |
| C2—H2A | 1.01 (3)  | C9—H9A | 1.01 (3)  |
| C2—H2B | 0.94 (4)  | C9—H9B | 0.94 (4)  |
| C3—H3A | 1.01 (3)  |        |           |

|             |             |             |            |
|-------------|-------------|-------------|------------|
| C7—O2—C9    | 110.7 (2)   | H4A—C4—H4B  | 115 (3)    |
| C3—O1—C5    | 110.1 (2)   | O1—C5—C4    | 111.3 (2)  |
| C1—N1—C4    | 124.7 (2)   | O1—C5—H5A   | 108.8 (19) |
| C1—N1—C2    | 122.8 (2)   | C4—C5—H5A   | 107.2 (19) |
| C4—N1—C2    | 112.2 (2)   | O1—C5—H5B   | 103 (2)    |
| C6—N2—C8    | 111.0 (2)   | C4—C5—H5B   | 112 (2)    |
| C6—N2—H1N   | 107 (2)     | H5A—C5—H5B  | 114 (3)    |
| C8—N2—H1N   | 111 (2)     | N2—C6—C7    | 108.9 (2)  |
| C6—N2—H2N   | 112 (2)     | N2—C6—H6A   | 106.0 (19) |
| C8—N2—H2N   | 107 (2)     | C7—C6—H6A   | 109.9 (19) |
| H1N—N2—H2N  | 109 (3)     | N2—C6—H6B   | 109 (2)    |
| N1—C1—S2    | 120.49 (17) | C7—C6—H6B   | 113 (2)    |
| N1—C1—S1    | 119.70 (18) | H6A—C6—H6B  | 110 (3)    |
| S2—C1—S1    | 119.79 (13) | O2—C7—C6    | 111.4 (3)  |
| N1—C2—C3    | 109.9 (2)   | O2—C7—H7A   | 110 (2)    |
| N1—C2—H2A   | 109.1 (19)  | C6—C7—H7A   | 110 (2)    |
| C3—C2—H2A   | 111 (2)     | O2—C7—H7B   | 104 (2)    |
| N1—C2—H2B   | 106 (2)     | C6—C7—H7B   | 109 (2)    |
| C3—C2—H2B   | 113 (2)     | H7A—C7—H7B  | 112 (3)    |
| H2A—C2—H2B  | 108 (3)     | N2—C8—C9    | 109.5 (2)  |
| O1—C3—C2    | 111.9 (2)   | N2—C8—H8A   | 100.0 (19) |
| O1—C3—H3A   | 106 (2)     | C9—C8—H8A   | 114.1 (19) |
| C2—C3—H3A   | 109.6 (19)  | N2—C8—H8B   | 109 (2)    |
| O1—C3—H3B   | 105 (2)     | C9—C8—H8B   | 116 (2)    |
| C2—C3—H3B   | 109 (2)     | H8A—C8—H8B  | 107 (3)    |
| H3A—C3—H3B  | 115 (3)     | O2—C9—C8    | 111.6 (3)  |
| N1—C4—C5    | 110.0 (2)   | O2—C9—H9A   | 105.6 (19) |
| N1—C4—H4A   | 109 (2)     | C8—C9—H9A   | 109.2 (19) |
| C5—C4—H4A   | 107 (2)     | O2—C9—H9B   | 106 (2)    |
| N1—C4—H4B   | 107 (2)     | C8—C9—H9B   | 109 (2)    |
| C5—C4—H4B   | 108 (2)     | H9A—C9—H9B  | 116 (3)    |
|             |             |             |            |
| C4—N1—C1—S2 | 178.8 (2)   | C2—N1—C4—C5 | -53.1 (3)  |
| C2—N1—C1—S2 | 5.9 (3)     | C3—O1—C5—C4 | -60.0 (3)  |
| C4—N1—C1—S1 | -3.0 (3)    | N1—C4—C5—O1 | 56.4 (3)   |
| C2—N1—C1—S1 | -175.9 (2)  | C8—N2—C6—C7 | -55.7 (4)  |
| C1—N1—C2—C3 | -133.9 (3)  | C9—O2—C7—C6 | -60.0 (4)  |
| C4—N1—C2—C3 | 52.4 (3)    | N2—C6—C7—O2 | 58.1 (4)   |
| C5—O1—C3—C2 | 59.7 (3)    | C6—N2—C8—C9 | 54.9 (4)   |
| N1—C2—C3—O1 | -55.7 (3)   | C7—O2—C9—C8 | 59.0 (4)   |
| C1—N1—C4—C5 | 133.4 (3)   | N2—C8—C9—O2 | -56.2 (4)  |

*Hydrogen-bond geometry (Å, °)*

| <i>D—H···A</i> | <i>D—H</i> | <i>H···A</i> | <i>D···A</i> | <i>D—H···A</i> |
|----------------|------------|--------------|--------------|----------------|
| N2—H1N···S1    | 0.86 (4)   | 2.47 (4)     | 3.284 (3)    | 158 (3)        |

|                          |          |          |           |         |
|--------------------------|----------|----------|-----------|---------|
| N2—H2N···S1 <sup>i</sup> | 0.91 (4) | 2.75 (4) | 3.453 (2) | 135 (3) |
| N2—H2N···S2 <sup>i</sup> | 0.91 (4) | 2.39 (3) | 3.221 (2) | 151 (3) |

---

Symmetry code: (i)  $-x+1, -y, -z+2$ .