

Acta Crystallographica Section E

Structure Reports

Online

ISSN 1600-5368

catena-Poly[[[dichloridomercury(II)]- μ -1,4-bis(3-pyridylaminomethyl)benzene- κ^2 N:N'] N,N-dimethylformamide monosolvate]

 Shan Gao^a and Seik Weng Ng^{b,c*}

^aKey Laboratory of Functional Inorganic Material Chemistry, Ministry of Education, Heilongjiang University, Harbin 150080, People's Republic of China, ^bDepartment of Chemistry, University of Malaya, 50603 Kuala Lumpur, Malaysia, and ^cChemistry Department, Faculty of Science, King Abdulaziz University, PO Box 80203 Jeddah, Saudi Arabia

Correspondence e-mail: seikweng@um.edu.my

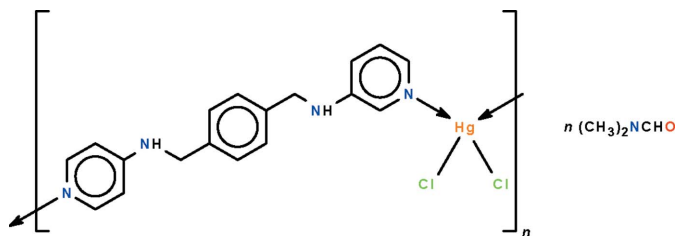
Received 28 June 2011; accepted 1 July 2011

Key indicators: single-crystal X-ray study; $T = 293$ K; mean $\sigma(\text{C}-\text{C}) = 0.013$ Å; disorder in solvent or counterion; R factor = 0.051; wR factor = 0.167; data-to-parameter ratio = 18.9.

The crystal structure of the polymeric title compound, $\{[\text{HgCl}_2(\text{C}_{18}\text{H}_{18}\text{N}_4)] \cdot \text{C}_3\text{H}_7\text{NO}\}_n$, features an N -heterocyclic ligand which links adjacent HgCl_2 units into a helical chain running along the b axis. The coordination geometry of the Hg^{II} atom is a distorted tetrahedron. The dimethylformamide molecule is disordered over two positions in a 1:1 ratio, and is linked to the complex molecules *via* $\text{N}-\text{H} \cdots \text{O}$ hydrogen bonds.

Related literature

For the structure of the N -heterocyclic ligand, see: Zhu *et al.* (2007).



Experimental

Crystal data

 $[\text{HgCl}_2(\text{C}_{18}\text{H}_{18}\text{N}_4)] \cdot \text{C}_3\text{H}_7\text{NO}$
 $M_r = 634.95$

 Monoclinic, $P2_1/n$
 $a = 8.4851$ (9) Å

 $b = 15.1215$ (14) Å

 $c = 19.490$ (2) Å

 $\beta = 103.826$ (2)°

 $V = 2428.2$ (4) Å³
 $Z = 4$

 Mo $K\alpha$ radiation

 $\mu = 6.58$ mm⁻¹
 $T = 293$ K

 $0.15 \times 0.11 \times 0.11$ mm

Data collection

Rigaku R-Axis RAPID IP

diffractometer

Absorption correction: multi-scan

(ABSCOR; Higashi, 1995)

 $T_{\text{min}} = 0.439$, $T_{\text{max}} = 0.531$

22980 measured reflections

5479 independent reflections

 2593 reflections with $I > 2\sigma(I)$
 $R_{\text{int}} = 0.089$

Refinement

 $R[F^2 > 2\sigma(F^2)] = 0.051$
 $wR(F^2) = 0.167$
 $S = 1.05$

5479 reflections

290 parameters

42 restraints

H-atom parameters constrained

 $\Delta\rho_{\text{max}} = 1.26$ e Å⁻³
 $\Delta\rho_{\text{min}} = -1.31$ e Å⁻³

Table 1

Selected bond lengths (Å).

Hg1—N1	2.395 (7)	Hg1—Cl1	2.355 (3)
Hg1—N4 ⁱ	2.308 (6)	Hg1—Cl2	2.391 (3)

 Symmetry code: (i) $-x + \frac{5}{2}, y + \frac{1}{2}, -z + \frac{3}{2}$.

Table 2

Hydrogen-bond geometry (Å, °).

$D-\text{H} \cdots A$	$D-\text{H}$	$\text{H} \cdots A$	$D \cdots A$	$D-\text{H} \cdots A$
N2—H2N \cdots O1	0.88	2.15	3.03 (3)	174
N2—H2N \cdots O1 ⁱ	0.88	2.11	2.99 (3)	180
N3—H3N \cdots O1 ⁱⁱ	0.88	2.14	3.01 (3)	166
N3—H3N \cdots O1 ⁱⁱⁱ	0.88	2.13	2.98 (3)	162

 Symmetry code: (ii) $x + 1, y, z$.

Data collection: *RAPID-AUTO* (Rigaku, 1998); cell refinement: *RAPID-AUTO*; data reduction: *CrystalClear* (Rigaku/MS, 2002); program(s) used to solve structure: *SHELXS97* (Sheldrick, 2008); program(s) used to refine structure: *SHELXL97* (Sheldrick, 2008); molecular graphics: *X-SEED* (Barbour, 2001); software used to prepare material for publication: *pubCIF* (Westrip, 2010).

This work is supported by the Key Project of the Natural Science Foundation of Heilongjiang Province (No. ZD200903), the Innovation Team of the Education Bureau of Heilongjiang Province (No. 2010 t d03), the Key Project of the Education Bureau of Heilongjiang Province, China (No. 12511z023) and the University of Malaya.

Supplementary data and figures for this paper are available from the IUCr electronic archives (Reference: XU5257).

References

- Barbour, L. J. (2001). *J. Supramol. Chem.* **1**, 189–191.
 Higashi, T. (1995). *ABSCOR*. Rigaku Corporation, Tokyo, Japan.
 Rigaku (1998). *RAPID-AUTO*. Rigaku Corporation, Tokyo, Japan.
 Rigaku/MS (2002). *CrystalClear*. Rigaku/MS Inc., The Woodlands, Texas, USA.
 Sheldrick, G. M. (2008). *Acta Cryst.* **A64**, 112–122.
 Westrip, S. P. (2010). *J. Appl. Cryst.* **43**, 920–925.
 Zhu, L.-N., Gao, S. & Huo, L.-H. (2007). *Acta Cryst.* **E63**, o4459.

supporting information

Acta Cryst. (2011). E67, m1051 [doi:10.1107/S1600536811026043]

***catena*-Poly[[[dichloridomercury(II)]- μ -1,4-bis(3-pyridylaminomethyl)benzene- κ^2 N:N'] *N,N*-dimethylformamide monosolvate]**

Shan Gao and Seik Weng Ng

S1. Comment

1,4-Bis(2-pyridylaminomethyl)benzene is a flexible *N*-heterocycle whose pyridyl and amino N-atoms are capable for forming coordination polymers (Zhu *et al.*, 2007). The crystal structure of HgCl₂(C₁₈H₁₈N₄)DMF features the *N*-heterocycle linking adjacent HgCl₂ units into a helical chain (Scheme I, Fig. 1). The geometry of Hg^{II} is a tetrahedron. The lattice DMF molecule is disordered in two positions in a 1:1 ratio. The *N*-heterocycle forms an N–H···O hydrogen bond to the solvent molecule at an N···O distance of 2.99 (3) and 3.03 (3) Å; the hydrogen bond probably stabilizes the solvent molecule so that it is not lost during crystallization.

S2. Experimental

A THF solution (10 ml) of mercuric chloride (2 mmol) was mixed with a DMF solution (5 ml) of 1,4-bis(3-pyridylaminomethyl)benzene (2 mmol). The solution was filtered and sent aside for the grown of colorless crystals.

S3. Refinement

Carbon-bound H-atoms were placed in calculated positions (C–H 0.93 Å) and were included in the refinement in the riding model approximation, with $U(\text{H})$ set to $1.2U(\text{C})$. The amino H-atoms similar treated (N–H 0.86 Å).

The lattice DMF molecule is disordered over two sites; the disorder could not be refined, and was assumed to be a 1:1 type of disorder. The C–O distances were restrained to 1.25 ± 0.01 Å, the C_{carbonyl}–N distances to 1.35 ± 0.01 Å and the N–C_{methyl} distances to 1.45 ± 0.01 Å. Each component was restrained to planar, with a maximum deviation of 0.01 Å. The temperature factors of the primed atoms were set to those of the unprimed ones, and the anisotropic temperature factors were restrained to be nearly isotropic.

The final difference Fourier map had peaks/holes in the vicinity of Hg1.

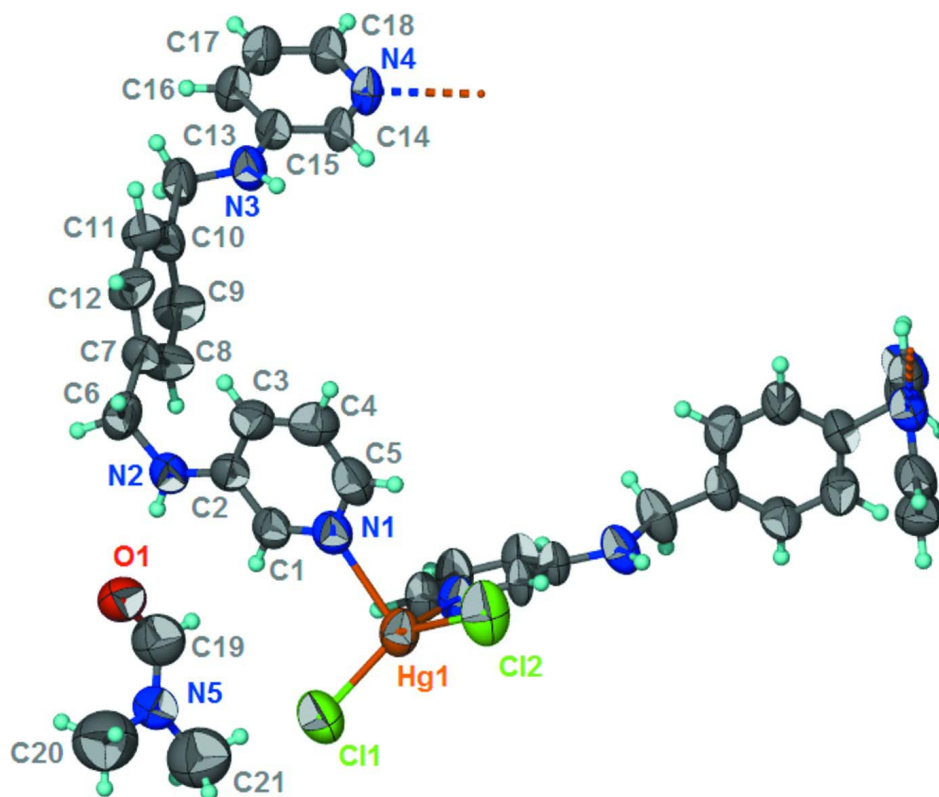


Figure 1

Thermal ellipsoid plot (Barbour, 2001) of a portion of the polymeric chain structure of $\text{HgCl}_2(\text{C}_{18}\text{H}_{18}\text{N}_4)\text{DMF}$ at the 50% probability level; hydrogen atoms are drawn as spheres of arbitrary radius.

catena-Poly[[[dichloridomercury(II)]- μ -1,4-bis(3-pyridylaminomethyl)benzene- κ^2 N:N'] N,N-dimethylformamide monosolvate]

Crystal data

$[\text{HgCl}_2(\text{C}_{18}\text{H}_{18}\text{N}_4)] \cdot \text{C}_3\text{H}_7\text{NO}$

$M_r = 634.95$

Monoclinic, $P2_1/n$

Hall symbol: -P 2yn

$a = 8.4851(9) \text{ \AA}$

$b = 15.1215(14) \text{ \AA}$

$c = 19.490(2) \text{ \AA}$

$\beta = 103.826(2)^\circ$

$V = 2428.2(4) \text{ \AA}^3$

$Z = 4$

$F(000) = 1232$

$D_x = 1.737 \text{ Mg m}^{-3}$

Mo $K\alpha$ radiation, $\lambda = 0.71073 \text{ \AA}$

Cell parameters from 10259 reflections

$\theta = 3.2\text{--}27.5^\circ$

$\mu = 6.58 \text{ mm}^{-1}$

$T = 293 \text{ K}$

Prism, colorless

$0.15 \times 0.11 \times 0.11 \text{ mm}$

Data collection

Rigaku R-AXIS RAPID IP
diffractometer

Radiation source: fine-focus sealed tube

Graphite monochromator

ω scan

Absorption correction: multi-scan

(*ABSCOR*; Higashi, 1995)

$T_{\min} = 0.439$, $T_{\max} = 0.531$

22980 measured reflections

5479 independent reflections

2593 reflections with $I > 2\sigma(I)$

$R_{\text{int}} = 0.089$

$\theta_{\max} = 27.5^\circ$, $\theta_{\min} = 3.2^\circ$

$h = -11 \rightarrow 11$

$k = -19 \rightarrow 19$

$l = -25 \rightarrow 22$

Refinement

Refinement on F^2

Least-squares matrix: full

$R[F^2 > 2\sigma(F^2)] = 0.051$

$wR(F^2) = 0.167$

$S = 1.05$

5479 reflections

290 parameters

42 restraints

Primary atom site location: structure-invariant
direct methods

Secondary atom site location: difference Fourier
map

Hydrogen site location: inferred from
neighbouring sites

H-atom parameters constrained

$w = 1/[\sigma^2(F_o^2) + (0.0656P)^2]$

where $P = (F_o^2 + 2F_c^2)/3$

$(\Delta/\sigma)_{\max} = 0.001$

$\Delta\rho_{\max} = 1.26 \text{ e } \text{Å}^{-3}$

$\Delta\rho_{\min} = -1.31 \text{ e } \text{Å}^{-3}$

Fractional atomic coordinates and isotropic or equivalent isotropic displacement parameters (Å^2)

	x	y	z	$U_{\text{iso}}^*/U_{\text{eq}}$	Occ. (<1)
Hg1	0.65054 (5)	0.63785 (2)	0.73300 (2)	0.0944 (2)	
Cl1	0.3880 (4)	0.5916 (3)	0.7371 (2)	0.1488 (12)	
Cl2	0.7868 (4)	0.77413 (15)	0.72364 (19)	0.1366 (11)	
N1	0.7052 (9)	0.5581 (4)	0.6351 (4)	0.0845 (19)	
N2	0.5616 (9)	0.3645 (4)	0.5347 (5)	0.097 (2)	
H2N	0.4912	0.3482	0.5589	0.116*	
N3	1.2859 (9)	0.1242 (4)	0.5624 (4)	0.089 (2)	
H3N	1.2888	0.1819	0.5685	0.106*	
N4	1.6587 (8)	0.0700 (4)	0.6783 (3)	0.0778 (18)	
C1	0.6262 (10)	0.4841 (5)	0.6124 (5)	0.077 (2)	
H1	0.5528	0.4619	0.6366	0.092*	
C2	0.6491 (10)	0.4383 (5)	0.5535 (5)	0.078 (2)	
C3	0.7569 (11)	0.4741 (7)	0.5156 (5)	0.097 (3)	
H3	0.7720	0.4457	0.4753	0.117*	
C4	0.8377 (13)	0.5496 (7)	0.5381 (6)	0.105 (3)	
H4	0.9108	0.5734	0.5144	0.126*	
C5	0.8089 (11)	0.5909 (6)	0.5976 (6)	0.098 (3)	
H5	0.8631	0.6435	0.6127	0.118*	
C6	0.5810 (12)	0.3099 (7)	0.4743 (5)	0.108 (3)	
H6A	0.5769	0.3485	0.4342	0.130*	
H6B	0.4894	0.2698	0.4617	0.130*	
C7	0.7345 (10)	0.2565 (5)	0.4868 (5)	0.077 (2)	
C8	0.7897 (12)	0.2164 (6)	0.5502 (6)	0.100 (3)	
H8	0.7379	0.2257	0.5866	0.120*	
C9	0.9204 (13)	0.1631 (7)	0.5601 (5)	0.101 (3)	
H9	0.9559	0.1349	0.6035	0.121*	
C10	1.0050 (10)	0.1482 (5)	0.5074 (5)	0.073 (2)	
C11	0.9536 (11)	0.1896 (6)	0.4447 (5)	0.085 (2)	
H11	1.0070	0.1811	0.4087	0.102*	
C12	0.8207 (12)	0.2447 (6)	0.4349 (5)	0.093 (3)	
H12	0.7875	0.2749	0.3923	0.111*	
C13	1.1469 (10)	0.0856 (6)	0.5190 (6)	0.098 (3)	
H13A	1.1204	0.0317	0.5408	0.118*	
H13B	1.1685	0.0701	0.4738	0.118*	

C14	1.5277 (9)	0.1115 (5)	0.6468 (4)	0.0675 (19)	
H14	1.5119	0.1688	0.6610	0.081*	
C15	1.4147 (9)	0.0755 (5)	0.5950 (4)	0.0700 (19)	
C16	1.4362 (11)	-0.0123 (5)	0.5778 (5)	0.083 (2)	
H16	1.3588	-0.0406	0.5429	0.100*	
C17	1.5701 (12)	-0.0560 (6)	0.6123 (5)	0.092 (3)	
H17	1.5835	-0.1152	0.6020	0.111*	
C18	1.6827 (11)	-0.0152 (5)	0.6607 (5)	0.083 (2)	
H18	1.7778	-0.0446	0.6825	0.100*	
O1	0.300 (4)	0.314 (2)	0.6094 (14)	0.110 (3)	0.50
N5	0.181 (3)	0.3560 (13)	0.7007 (11)	0.085 (3)	0.50
C19	0.303 (3)	0.3275 (14)	0.6732 (14)	0.128 (6)	0.50
H19	0.4011	0.3163	0.7053	0.154*	0.50
C20	0.025 (3)	0.375 (2)	0.6545 (18)	0.197 (11)	0.50
H20A	0.0333	0.4262	0.6267	0.295*	0.50
H20B	-0.0525	0.3856	0.6823	0.295*	0.50
H20C	-0.0096	0.3252	0.6239	0.295*	0.50
C21	0.180 (5)	0.380 (2)	0.7725 (13)	0.185 (9)	0.50
H21A	0.1230	0.4349	0.7723	0.278*	0.50
H21B	0.2899	0.3868	0.7998	0.278*	0.50
H21C	0.1273	0.3346	0.7931	0.278*	0.50
O1'	0.323 (4)	0.309 (2)	0.6172 (14)	0.110 (3)	0.50
N5'	0.181 (3)	0.3701 (11)	0.6889 (12)	0.085 (3)	0.50
C19'	0.200 (3)	0.3494 (13)	0.6242 (13)	0.128 (6)	0.50
H19'	0.1203	0.3654	0.5844	0.154*	0.50
C20'	0.052 (4)	0.416 (2)	0.712 (2)	0.197 (11)	0.50
H20D	-0.0339	0.3751	0.7128	0.295*	0.50
H20E	0.0113	0.4629	0.6793	0.295*	0.50
H20F	0.0940	0.4398	0.7580	0.295*	0.50
C21'	0.308 (3)	0.344 (2)	0.7492 (15)	0.185 (9)	0.50
H21D	0.3351	0.2828	0.7443	0.278*	0.50
H21E	0.2704	0.3509	0.7917	0.278*	0.50
H21F	0.4020	0.3798	0.7517	0.278*	0.50

Atomic displacement parameters (\AA^2)

	U^{11}	U^{22}	U^{33}	U^{12}	U^{13}	U^{23}
Hg1	0.0921 (3)	0.0868 (3)	0.0909 (3)	0.00588 (18)	-0.0045 (2)	-0.00621 (18)
Cl1	0.096 (2)	0.202 (3)	0.142 (3)	-0.024 (2)	0.017 (2)	-0.030 (3)
Cl2	0.139 (3)	0.0719 (13)	0.172 (3)	0.0028 (14)	-0.015 (2)	0.0193 (16)
N1	0.071 (5)	0.083 (4)	0.092 (5)	0.005 (4)	0.007 (4)	-0.001 (4)
N2	0.065 (5)	0.099 (5)	0.123 (7)	0.002 (4)	0.014 (5)	-0.031 (5)
N3	0.066 (5)	0.072 (4)	0.116 (6)	0.005 (3)	-0.003 (4)	-0.016 (4)
N4	0.079 (5)	0.073 (4)	0.065 (4)	-0.009 (3)	-0.014 (3)	-0.005 (3)
C1	0.062 (5)	0.080 (5)	0.081 (5)	0.007 (4)	0.002 (4)	0.002 (4)
C2	0.062 (5)	0.078 (5)	0.089 (6)	0.013 (4)	0.010 (5)	-0.010 (5)
C3	0.078 (7)	0.114 (8)	0.097 (7)	0.020 (5)	0.014 (6)	-0.012 (6)
C4	0.107 (8)	0.103 (7)	0.113 (8)	0.004 (6)	0.041 (7)	0.005 (6)

C5	0.072 (6)	0.086 (6)	0.126 (8)	-0.002 (5)	0.004 (6)	0.003 (6)
C6	0.096 (7)	0.108 (7)	0.101 (7)	0.026 (6)	-0.016 (6)	-0.034 (6)
C7	0.064 (5)	0.081 (5)	0.082 (6)	0.013 (4)	0.005 (5)	-0.010 (4)
C8	0.092 (7)	0.113 (7)	0.101 (7)	0.036 (6)	0.037 (6)	0.020 (6)
C9	0.113 (8)	0.122 (7)	0.066 (6)	0.029 (6)	0.017 (6)	0.021 (5)
C10	0.057 (5)	0.070 (4)	0.080 (6)	0.007 (4)	-0.006 (4)	-0.007 (4)
C11	0.083 (6)	0.100 (6)	0.075 (6)	0.016 (5)	0.023 (5)	-0.007 (5)
C12	0.104 (8)	0.107 (6)	0.063 (5)	0.025 (5)	0.012 (5)	-0.002 (5)
C13	0.066 (6)	0.090 (6)	0.119 (8)	0.007 (5)	-0.017 (5)	-0.029 (5)
C14	0.058 (5)	0.068 (4)	0.056 (4)	0.010 (3)	-0.027 (3)	-0.004 (3)
C15	0.063 (5)	0.069 (4)	0.068 (5)	0.012 (4)	-0.004 (4)	0.003 (4)
C16	0.086 (6)	0.067 (4)	0.083 (6)	0.007 (4)	-0.006 (5)	-0.011 (4)
C17	0.094 (7)	0.070 (5)	0.099 (7)	0.009 (5)	-0.006 (6)	-0.006 (5)
C18	0.082 (6)	0.070 (5)	0.083 (6)	0.007 (4)	-0.009 (5)	-0.003 (4)
O1	0.108 (7)	0.101 (4)	0.125 (6)	0.006 (5)	0.035 (5)	-0.011 (4)
N5	0.083 (5)	0.087 (6)	0.082 (6)	0.010 (4)	0.015 (5)	0.016 (5)
C19	0.125 (10)	0.134 (9)	0.122 (10)	0.015 (7)	0.023 (8)	0.009 (8)
C20	0.188 (13)	0.210 (14)	0.193 (14)	0.023 (9)	0.047 (10)	-0.009 (9)
C21	0.189 (12)	0.195 (12)	0.177 (12)	0.005 (9)	0.054 (9)	0.000 (9)
O1'	0.108 (7)	0.101 (4)	0.125 (6)	0.006 (5)	0.035 (5)	-0.011 (4)
N5'	0.083 (5)	0.087 (6)	0.082 (6)	0.010 (4)	0.015 (5)	0.016 (5)
C19'	0.125 (10)	0.134 (9)	0.122 (10)	0.015 (7)	0.023 (8)	0.009 (8)
C20'	0.188 (13)	0.210 (14)	0.193 (14)	0.023 (9)	0.047 (10)	-0.009 (9)
C21'	0.189 (12)	0.195 (12)	0.177 (12)	0.005 (9)	0.054 (9)	0.000 (9)

Geometric parameters (Å, °)

Hg1—N1	2.395 (7)	C11—H11	0.9300
Hg1—N4 ⁱ	2.308 (6)	C12—H12	0.9300
Hg1—C11	2.355 (3)	C13—H13A	0.9700
Hg1—C12	2.391 (3)	C13—H13B	0.9700
N1—C1	1.325 (10)	C14—C15	1.331 (10)
N1—C5	1.364 (11)	C14—H14	0.9300
N2—C2	1.342 (10)	C15—C16	1.392 (10)
N2—C6	1.479 (11)	C16—C17	1.346 (12)
N2—H2N	0.8800	C16—H16	0.9300
N3—C15	1.345 (10)	C17—C18	1.324 (11)
N3—C13	1.404 (10)	C17—H17	0.9300
N3—H3N	0.8800	C18—H18	0.9300
N4—C14	1.296 (9)	O1—C19	1.253 (10)
N4—C18	1.361 (9)	N5—C19	1.344 (10)
N4—Hg1 ⁱⁱ	2.308 (6)	N5—C20	1.440 (10)
C1—C2	1.392 (11)	N5—C21	1.448 (10)
C1—H1	0.9300	C19—H19	0.9300
C2—C3	1.414 (12)	C20—H20A	0.9600
C3—C4	1.351 (13)	C20—H20B	0.9600
C3—H3	0.9300	C20—H20C	0.9600
C4—C5	1.390 (13)	C21—H21A	0.9600

C4—H4	0.9300	C21—H21B	0.9600
C5—H5	0.9300	C21—H21C	0.9600
C6—C7	1.502 (11)	O1'—C19'	1.250 (10)
C6—H6A	0.9700	N5'—C19'	1.346 (10)
C6—H6B	0.9700	N5'—C20'	1.448 (10)
C7—C8	1.356 (12)	N5'—C21'	1.449 (10)
C7—C12	1.394 (11)	C19'—H19'	0.9300
C8—C9	1.347 (12)	C20'—H20D	0.9600
C8—H8	0.9300	C20'—H20E	0.9600
C9—C10	1.405 (12)	C20'—H20F	0.9600
C9—H9	0.9300	C21'—H21D	0.9600
C10—C11	1.348 (11)	C21'—H21E	0.9600
C10—C13	1.506 (11)	C21'—H21F	0.9600
C11—C12	1.378 (11)		
N4 ⁱ —Hg1—C11	110.0 (2)	C10—C11—C12	118.9 (8)
N4 ⁱ —Hg1—C12	100.07 (18)	C10—C11—H11	120.6
C11—Hg1—C12	137.49 (12)	C12—C11—H11	120.6
N4 ⁱ —Hg1—N1	97.9 (2)	C11—C12—C7	122.1 (8)
C11—Hg1—N1	104.0 (2)	C11—C12—H12	119.0
C12—Hg1—N1	100.6 (2)	C7—C12—H12	119.0
C1—N1—C5	117.9 (8)	N3—C13—C10	110.8 (7)
C1—N1—Hg1	120.9 (6)	N3—C13—H13A	109.5
C5—N1—Hg1	121.1 (6)	C10—C13—H13A	109.5
C2—N2—C6	121.5 (8)	N3—C13—H13B	109.5
C2—N2—H2N	119.2	C10—C13—H13B	109.5
C6—N2—H2N	119.2	H13A—C13—H13B	108.1
C15—N3—C13	121.9 (7)	N4—C14—C15	122.8 (7)
C15—N3—H3N	119.0	N4—C14—H14	118.6
C13—N3—H3N	119.0	C15—C14—H14	118.6
C14—N4—C18	120.1 (7)	C14—C15—N3	119.4 (7)
C14—N4—Hg1 ⁱⁱ	120.6 (5)	C14—C15—C16	117.4 (7)
C18—N4—Hg1 ⁱⁱ	119.3 (5)	N3—C15—C16	123.2 (8)
N1—C1—C2	122.4 (8)	C17—C16—C15	119.4 (8)
N1—C1—H1	118.8	C17—C16—H16	120.3
C2—C1—H1	118.8	C15—C16—H16	120.3
N2—C2—C1	117.5 (8)	C18—C17—C16	120.4 (8)
N2—C2—C3	124.0 (8)	C18—C17—H17	119.8
C1—C2—C3	118.4 (8)	C16—C17—H17	119.8
C4—C3—C2	119.7 (9)	C17—C18—N4	119.7 (8)
C4—C3—H3	120.1	C17—C18—H18	120.2
C2—C3—H3	120.1	N4—C18—H18	120.2
C3—C4—C5	118.3 (9)	C19—N5—C20	120 (3)
C3—C4—H4	120.9	C19—N5—C21	130 (3)
C5—C4—H4	120.9	C20—N5—C21	110 (3)
N1—C5—C4	123.3 (9)	O1—C19—N5	128 (3)
N1—C5—H5	118.4	O1—C19—H19	116.2
C4—C5—H5	118.4	N5—C19—H19	116.2

N2—C6—C7	115.3 (8)	C19'—N5'—C20'	132 (3)
N2—C6—H6A	108.4	C19'—N5'—C21'	118 (2)
C7—C6—H6A	108.4	C20'—N5'—C21'	111 (2)
N2—C6—H6B	108.4	O1'—C19'—N5'	121 (3)
C7—C6—H6B	108.4	O1'—C19'—H19'	119.7
H6A—C6—H6B	107.5	N5'—C19'—H19'	119.7
C8—C7—C12	118.5 (8)	N5'—C20'—H20D	109.5
C8—C7—C6	119.1 (8)	N5'—C20'—H20E	109.5
C12—C7—C6	122.4 (9)	H20D—C20'—H20E	109.5
C9—C8—C7	119.4 (8)	N5'—C20'—H20F	109.5
C9—C8—H8	120.3	H20D—C20'—H20F	109.5
C7—C8—H8	120.3	H20E—C20'—H20F	109.5
C8—C9—C10	122.6 (9)	N5'—C21'—H21D	109.5
C8—C9—H9	118.7	N5'—C21'—H21E	109.5
C10—C9—H9	118.7	H21D—C21'—H21E	109.5
C11—C10—C9	118.5 (7)	N5'—C21'—H21F	109.5
C11—C10—C13	120.1 (8)	H21D—C21'—H21F	109.5
C9—C10—C13	121.4 (8)	H21E—C21'—H21F	109.5
N4 ⁱ —Hg1—N1—C1	90.8 (6)	C8—C9—C10—C13	-177.7 (10)
C11—Hg1—N1—C1	-22.2 (7)	C9—C10—C11—C12	0.1 (13)
C12—Hg1—N1—C1	-167.3 (6)	C13—C10—C11—C12	178.2 (8)
N4 ⁱ —Hg1—N1—C5	-94.4 (7)	C10—C11—C12—C7	-2.3 (15)
C11—Hg1—N1—C5	152.6 (6)	C8—C7—C12—C11	4.0 (15)
C12—Hg1—N1—C5	7.5 (7)	C6—C7—C12—C11	-174.4 (9)
C5—N1—C1—C2	1.8 (12)	C15—N3—C13—C10	162.7 (8)
Hg1—N1—C1—C2	176.8 (6)	C11—C10—C13—N3	105.7 (10)
C6—N2—C2—C1	-178.2 (7)	C9—C10—C13—N3	-76.3 (12)
C6—N2—C2—C3	4.8 (14)	C18—N4—C14—C15	-2.5 (12)
N1—C1—C2—N2	-179.4 (8)	Hg1 ⁱⁱ —N4—C14—C15	179.4 (6)
N1—C1—C2—C3	-2.1 (13)	N4—C14—C15—N3	-176.6 (8)
N2—C2—C3—C4	178.9 (9)	N4—C14—C15—C16	4.0 (12)
C1—C2—C3—C4	1.8 (14)	C13—N3—C15—C14	-165.7 (8)
C2—C3—C4—C5	-1.4 (15)	C13—N3—C15—C16	13.6 (14)
C1—N1—C5—C4	-1.3 (14)	C14—C15—C16—C17	-1.8 (13)
Hg1—N1—C5—C4	-176.3 (7)	N3—C15—C16—C17	178.9 (9)
C3—C4—C5—N1	1.1 (16)	C15—C16—C17—C18	-1.9 (15)
C2—N2—C6—C7	73.2 (12)	C16—C17—C18—N4	3.5 (14)
N2—C6—C7—C8	40.2 (13)	C14—N4—C18—C17	-1.4 (12)
N2—C6—C7—C12	-141.5 (9)	Hg1 ⁱⁱ —N4—C18—C17	176.7 (7)
C12—C7—C8—C9	-3.4 (15)	C20—N5—C19—O1	0.0 (2)
C6—C7—C8—C9	175.0 (10)	C21—N5—C19—O1	-174 (3)
C7—C8—C9—C10	1.3 (17)	C20'—N5'—C19'—O1'	180.0 (4)
C8—C9—C10—C11	0.4 (15)	C21'—N5'—C19'—O1'	0.0 (3)

Symmetry codes: (i) $-x+5/2, y+1/2, -z+3/2$; (ii) $-x+5/2, y-1/2, -z+3/2$.

Hydrogen-bond geometry (Å, °)

<i>D</i> —H \cdots <i>A</i>	<i>D</i> —H	H \cdots <i>A</i>	<i>D</i> \cdots <i>A</i>	<i>D</i> —H \cdots <i>A</i>
N2—H2N \cdots O1	0.88	2.15	3.03 (3)	174
N2—H2N \cdots O1'	0.88	2.11	2.99 (3)	180
N3—H3N \cdots O1 ⁱⁱⁱ	0.88	2.14	3.01 (3)	166
N3—H3N \cdots O1 ^{iv}	0.88	2.13	2.98 (3)	162

Symmetry code: (iii) $x+1, y, z$.