

Acta Crystallographica Section E

## Structure Reports

Online

ISSN 1600-5368

# 4,4'-Dibromo-2,2'-[octane-1,8-diylbis-(nitrilomethanylylidene)]diphenol

Kwang Ha

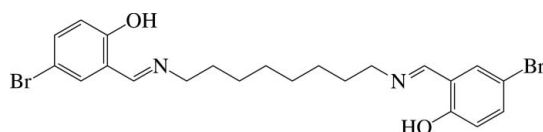
 School of Applied Chemical Engineering, The Research Institute of Catalysis, Chonnam National University, Gwangju 500-757, Republic of Korea  
 Correspondence e-mail: hakwang@chonnam.ac.kr

Received 27 July 2011; accepted 31 July 2011

 Key indicators: single-crystal X-ray study;  $T = 200$  K; mean  $\sigma(\text{C}-\text{C}) = 0.009$  Å;  $R$  factor = 0.066;  $wR$  factor = 0.176; data-to-parameter ratio = 19.7.

The title compound,  $\text{C}_{22}\text{H}_{26}\text{Br}_2\text{N}_2\text{O}_2$ , has a centre of inversion that is located in the middle of the octyl chain; the chain displays an extended zigzag conformation. A short intramolecular  $\text{O}-\text{H}\cdots\text{N}$  hydrogen bond occurs.

## Related literature

 For related structures, see: Elerman *et al.* (1998); Ünaleröglü & Hökelek (2002).


## Experimental

## Crystal data

 $\text{C}_{22}\text{H}_{26}\text{Br}_2\text{N}_2\text{O}_2$   
 $M_r = 510.27$   
 Triclinic,  $P\bar{1}$   
 $a = 8.253$  (3) Å  
 $b = 8.363$  (3) Å  
 $c = 9.571$  (3) Å  
 $\alpha = 64.431$  (6)°  
 $\beta = 65.839$  (7)°

 $\gamma = 87.403$  (7)°  
 $V = 536.7$  (3) Å<sup>3</sup>  
 $Z = 1$   
 Mo  $K\alpha$  radiation  
 $\mu = 3.80$  mm<sup>-1</sup>  
 $T = 200$  K  
 $0.24 \times 0.23 \times 0.10$  mm

## Data collection

 Bruker SMART 1000 CCD diffractometer  
 Absorption correction: multi-scan (SADABS; Bruker, 2000)  
 $T_{\min} = 0.701$ ,  $T_{\max} = 1.000$ 

 3910 measured reflections  
 2557 independent reflections  
 1445 reflections with  $I > 2\sigma(I)$   
 $R_{\text{int}} = 0.046$ 

## Refinement

 $R[F^2 > 2\sigma(F^2)] = 0.066$   
 $wR(F^2) = 0.176$   
 $S = 1.04$   
 2557 reflections  
 130 parameters

 H atoms treated by a mixture of independent and constrained refinement  
 $\Delta\rho_{\max} = 0.69$  e Å<sup>-3</sup>  
 $\Delta\rho_{\min} = -0.67$  e Å<sup>-3</sup>

Table 1

Hydrogen-bond geometry (Å, °).

$D-H\cdots A$	$D-H$	$H\cdots A$	$D\cdots A$	$D-H\cdots A$
$\text{O1}-\text{H1}\cdots\text{N1}$	0.84 (7)	1.86 (7)	2.581 (7)	144 (7)

Data collection: SMART (Bruker, 2000); cell refinement: SAINT (Bruker, 2000); data reduction: SAINT; program(s) used to solve structure: SHELXS97 (Sheldrick, 2008); program(s) used to refine structure: SHELXL97 (Sheldrick, 2008); molecular graphics: ORTEP-3 (Farrugia, 1997) and PLATON (Spek, 2009); software used to prepare material for publication: SHELXL97.

This work was supported by the Priority Research Centers Program through the National Research Foundation of Korea (NRF) funded by the Ministry of Education, Science and Technology (2010-0029626).

Supplementary data and figures for this paper are available from the IUCr electronic archives (Reference: NG5205).

## References

- Bruker (2000). SADABS, SMART and SAINT. Bruker AXS Inc., Madison, Wisconsin, USA.  
 Elerman, Y., Elmali, A., Kabak, M. & Svoboda, I. (1998). *Acta Cryst.* **C54**, 1701–1703.  
 Farrugia, L. J. (1997). *J. Appl. Cryst.* **30**, 565.  
 Sheldrick, G. M. (2008). *Acta Cryst.* **A64**, 112–122.  
 Spek, A. L. (2009). *Acta Cryst.* **D65**, 148–155.  
 Ünaleröglü, C. & Hökelek, T. (2002). *Spectrosc. Lett.* **35**, 317–326.

## supporting information

*Acta Cryst.* (2011). E67, o2257 [doi:10.1107/S1600536811030790]

**4,4'-Dibromo-2,2'-[octane-1,8-diylbis(nitrilomethanylylidene)]diphenol****Kwang Ha****S1. Comment**

The title compound, C<sub>22</sub>H<sub>26</sub>Br<sub>2</sub>N<sub>2</sub>O<sub>2</sub>, can act as a dibasic tetradentate ligand, that is, the N<sub>2</sub>O<sub>2</sub> donor atoms can coordinate one or two metal ions (Fig. 1). The compound crystallized in the triclinic space group  $P\bar{1}$ , whereas the related Schiff base with ethylene group (C<sub>16</sub>H<sub>14</sub>Br<sub>2</sub>N<sub>2</sub>O<sub>2</sub>) (Ünaleroğlu & Hökelek, 2002) and propylene chain (C<sub>17</sub>H<sub>16</sub>Br<sub>2</sub>N<sub>2</sub>O<sub>2</sub>) (Elerman *et al.*, 1998) crystallized in the monoclinic space groups  $P2_1/a$  and  $P2_1/n$ , respectively.

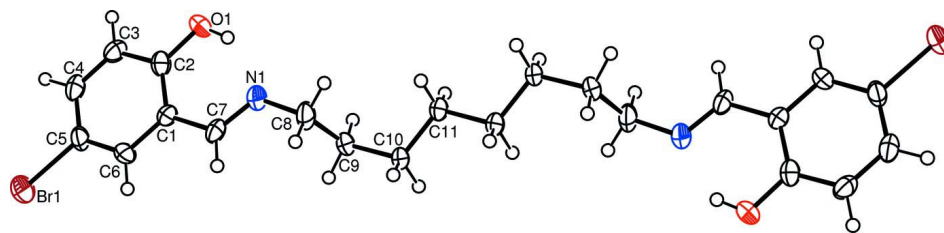
A centre of inversion is located at the centroid of the title molecule, and therefore the asymmetric unit contains one half of the formula unit and the two benzene rings are exactly parallel. The N1—C7/8 bond lengths and the C7—N1—C8 bond angle indicate that the imino N1 atom is *sp*<sup>2</sup>-hybridized [ $d(\text{N1}=\text{C7}) = 1.290(7) \text{ \AA}$  and  $d(\text{N1}-\text{C8}) = 1.459(7) \text{ \AA}$ ;  $\angle \text{C7}-\text{N1}-\text{C8} = 118.0(5)^\circ$ ]. The C8—C9—C10—C11 torsion angle of  $-77.2(7)^\circ$  displays the *gauche* conformation for the four atoms within the diiminooctylene chain, whereas the N1—C8—C9—C10 and C9—C10—C11—C11<sup>i</sup> (symmetry code *i*: 1 - *x*, 2 - *y*, -1 - *z*) atoms show the anti conformation with the torsion angle of  $174.6(5)^\circ$  and  $-178.9(6)^\circ$ , respectively. The molecule reveals strong intramolecular O—H $\cdots$ N hydrogen bonding between the hydroxy O atom and the imino N atom with  $d(\text{O}\cdots\text{N}) = 2.581(7) \text{ \AA}$  forming a nearly planar six-membered ring (Fig. 2, Table 1).

**S2. Experimental**

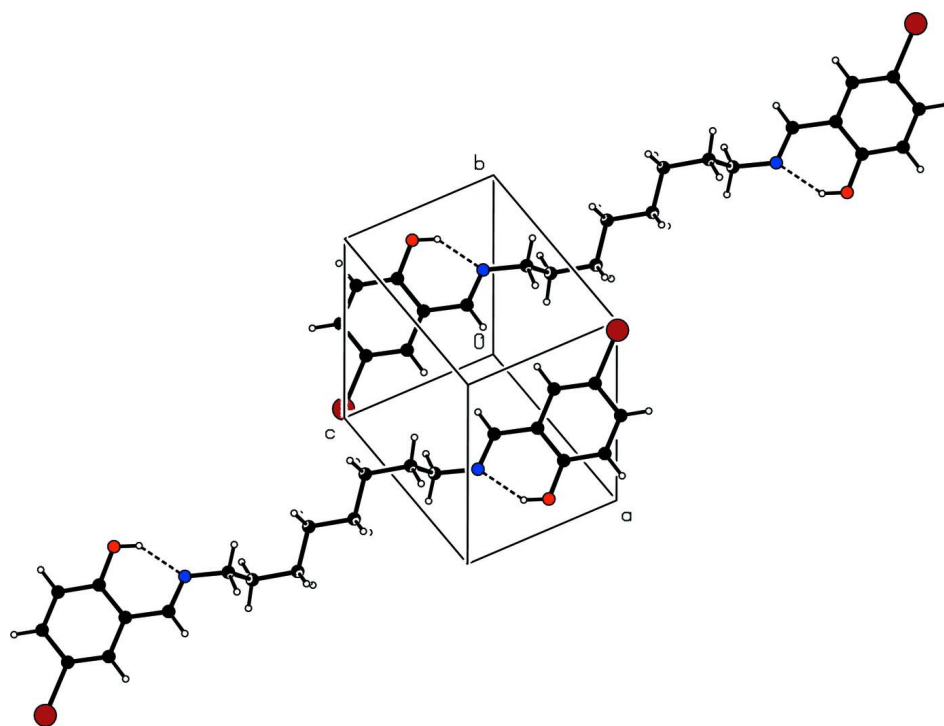
1,8-Diaminooctane (1.0103 g, 7.003 mmol) and 5-bromosalicylaldehyde (2.8159 g, 14.008 mmol) in EtOH (20 ml) were stirred for 1 h at room temperature. After addition of pentane (30 ml) to the reaction mixture, the formed precipitate was separated by filtration, washed with ether, and dried at 50 °C, to give a yellow powder (2.8918 g). Crystals suitable for X-ray analysis were obtained by slow evaporation from a CH<sub>3</sub>CN solution.

**S3. Refinement**

H atoms were positioned geometrically and allowed to ride on their respective parent atoms [C—H = 0.95 Å (CH) or 0.99 Å (CH<sub>2</sub>) and  $U_{\text{iso}}(\text{H}) = 1.2U_{\text{eq}}(\text{C})$ ]. The hydroxy H atom was located from Fourier difference maps and refined isotropically with  $U_{\text{iso}}(\text{H}) = 1.5U_{\text{eq}}(\text{O})$  [O—H = 0.84(7) Å].

**Figure 1**

The structure of the title compound, with displacement ellipsoids drawn at the 50% probability level; H atoms are shown as small circles of arbitrary radius. Unlabelled atoms are related to the reference atoms by the  $(1 - x, 2 - y, -1 - z)$  symmetry transformation.

**Figure 2**

View of the unit-cell contents of the title compound. Hydrogen-bond interactions are drawn with dashed lines.

#### 4-bromo-2-[(8-[(5-hydroxy-2-methylphenyl)methylideneamino]octyl)imino)methyl]phenol

##### Crystal data

$C_{22}H_{26}Br_2N_2O_2$

$M_r = 510.27$

Triclinic,  $P\bar{1}$

Hall symbol:  $-P\ 1$

$a = 8.253\ (3)\ \text{\AA}$

$b = 8.363\ (3)\ \text{\AA}$

$c = 9.571\ (3)\ \text{\AA}$

$\alpha = 64.431\ (6)^\circ$

$\beta = 65.839\ (7)^\circ$

$\gamma = 87.403\ (7)^\circ$

$V = 536.7\ (3)\ \text{\AA}^3$

$Z = 1$

$F(000) = 258$

$D_x = 1.579\ \text{Mg m}^{-3}$

Mo  $K\alpha$  radiation,  $\lambda = 0.71073\ \text{\AA}$

Cell parameters from 1213 reflections

$\theta = 2.7\text{--}28.0^\circ$

$\mu = 3.80\ \text{mm}^{-1}$

$T = 200\ \text{K}$

Block, yellow

$0.24 \times 0.23 \times 0.10\ \text{mm}$

*Data collection*

Bruker SMART 1000 CCD  
diffractometer  
Radiation source: fine-focus sealed tube  
Graphite monochromator  
 $\varphi$  and  $\omega$  scans  
Absorption correction: multi-scan  
(*SADABS*; Bruker, 2000)  
 $T_{\min} = 0.701$ ,  $T_{\max} = 1.000$

3910 measured reflections  
2557 independent reflections  
1445 reflections with  $I > 2\sigma(I)$   
 $R_{\text{int}} = 0.046$   
 $\theta_{\text{max}} = 28.3^\circ$ ,  $\theta_{\text{min}} = 2.6^\circ$   
 $h = -9 \rightarrow 10$   
 $k = -10 \rightarrow 11$   
 $l = -10 \rightarrow 12$

*Refinement*

Refinement on  $F^2$   
Least-squares matrix: full  
 $R[F^2 > 2\sigma(F^2)] = 0.066$   
 $wR(F^2) = 0.176$   
 $S = 1.04$   
2557 reflections  
130 parameters  
0 restraints  
Primary atom site location: structure-invariant  
direct methods

Secondary atom site location: difference Fourier  
map  
Hydrogen site location: inferred from  
neighbouring sites  
H atoms treated by a mixture of independent  
and constrained refinement  
 $w = 1/[\sigma^2(F_o^2) + (0.0693P)^2]$   
where  $P = (F_o^2 + 2F_c^2)/3$   
 $(\Delta/\sigma)_{\text{max}} < 0.001$   
 $\Delta\rho_{\text{max}} = 0.69 \text{ e } \text{\AA}^{-3}$   
 $\Delta\rho_{\text{min}} = -0.67 \text{ e } \text{\AA}^{-3}$

*Special details*

**Geometry.** All e.s.d.'s (except the e.s.d. in the dihedral angle between two l.s. planes) are estimated using the full covariance matrix. The cell e.s.d.'s are taken into account individually in the estimation of e.s.d.'s in distances, angles and torsion angles; correlations between e.s.d.'s in cell parameters are only used when they are defined by crystal symmetry. An approximate (isotropic) treatment of cell e.s.d.'s is used for estimating e.s.d.'s involving l.s. planes.

**Refinement.** Refinement of  $F^2$  against ALL reflections. The weighted  $R$ -factor  $wR$  and goodness of fit  $S$  are based on  $F^2$ , conventional  $R$ -factors  $R$  are based on  $F$ , with  $F$  set to zero for negative  $F^2$ . The threshold expression of  $F^2 > \sigma(F^2)$  is used only for calculating  $R$ -factors(gt) *etc.* and is not relevant to the choice of reflections for refinement.  $R$ -factors based on  $F^2$  are statistically about twice as large as those based on  $F$ , and  $R$ -factors based on ALL data will be even larger.

*Fractional atomic coordinates and isotropic or equivalent isotropic displacement parameters ( $\text{\AA}^2$ )*

	<i>x</i>	<i>y</i>	<i>z</i>	$U_{\text{iso}}^*/U_{\text{eq}}$
Br1	-0.15293 (11)	-0.11794 (9)	0.87746 (8)	0.0532 (3)
O1	-0.2341 (6)	0.5706 (6)	0.3510 (5)	0.0402 (12)
H1	-0.139 (10)	0.622 (10)	0.262 (9)	0.060*
N1	0.1031 (7)	0.6095 (6)	0.1542 (6)	0.0350 (12)
C1	-0.0431 (8)	0.3603 (8)	0.4327 (7)	0.0279 (13)
C2	-0.2133 (8)	0.4146 (8)	0.4675 (7)	0.0308 (13)
C3	-0.3617 (8)	0.3092 (8)	0.6202 (7)	0.0351 (15)
H3	-0.4757	0.3477	0.6419	0.042*
C4	-0.3464 (8)	0.1514 (8)	0.7395 (7)	0.0334 (14)
H4	-0.4488	0.0792	0.8427	0.040*
C5	-0.1777 (9)	0.0982 (8)	0.7068 (7)	0.0334 (14)
C6	-0.0262 (8)	0.1996 (7)	0.5568 (7)	0.0336 (15)
H6	0.0876	0.1611	0.5380	0.040*
C7	0.1174 (8)	0.4680 (8)	0.2747 (7)	0.0295 (13)
H7	0.2322	0.4338	0.2609	0.035*

C8	0.2663 (9)	0.7103 (8)	-0.0021 (7)	0.0390 (16)
H8A	0.3705	0.6960	0.0261	0.047*
H8B	0.2560	0.8395	-0.0495	0.047*
C9	0.2982 (9)	0.6468 (8)	-0.1364 (6)	0.0342 (15)
H9A	0.1890	0.6500	-0.1560	0.041*
H9B	0.3198	0.5209	-0.0929	0.041*
C10	0.4597 (8)	0.7637 (7)	-0.3076 (6)	0.0331 (15)
H10A	0.5599	0.7859	-0.2834	0.040*
H10B	0.5002	0.6963	-0.3761	0.040*
C11	0.4197 (8)	0.9434 (7)	-0.4143 (6)	0.0311 (14)
H11A	0.3817	1.0120	-0.3470	0.037*
H11B	0.3180	0.9215	-0.4368	0.037*

*Atomic displacement parameters (Å<sup>2</sup>)*

	$U^{11}$	$U^{22}$	$U^{33}$	$U^{12}$	$U^{13}$	$U^{23}$
Br1	0.0653 (6)	0.0326 (4)	0.0349 (4)	0.0100 (3)	-0.0125 (3)	-0.0017 (3)
O1	0.044 (3)	0.034 (2)	0.032 (2)	0.016 (2)	-0.017 (2)	-0.0065 (19)
N1	0.037 (3)	0.030 (3)	0.024 (2)	0.002 (2)	-0.008 (2)	-0.006 (2)
C1	0.022 (3)	0.030 (3)	0.024 (3)	0.003 (2)	-0.005 (2)	-0.011 (2)
C2	0.031 (4)	0.028 (3)	0.024 (3)	-0.004 (3)	-0.008 (2)	-0.006 (2)
C3	0.024 (4)	0.043 (4)	0.032 (3)	0.007 (3)	-0.006 (3)	-0.018 (3)
C4	0.036 (4)	0.032 (3)	0.022 (3)	-0.005 (3)	-0.004 (3)	-0.010 (2)
C5	0.042 (4)	0.027 (3)	0.021 (3)	0.003 (3)	-0.011 (3)	-0.005 (2)
C6	0.036 (4)	0.023 (3)	0.029 (3)	0.008 (3)	-0.010 (3)	-0.006 (2)
C7	0.026 (3)	0.031 (3)	0.023 (3)	-0.003 (3)	-0.001 (2)	-0.012 (2)
C8	0.041 (4)	0.035 (3)	0.021 (3)	-0.002 (3)	-0.005 (3)	-0.004 (3)
C9	0.038 (4)	0.026 (3)	0.022 (3)	0.005 (3)	-0.008 (3)	-0.002 (2)
C10	0.035 (4)	0.028 (3)	0.019 (3)	0.007 (3)	-0.004 (3)	-0.003 (2)
C11	0.027 (4)	0.028 (3)	0.022 (3)	0.001 (3)	-0.003 (2)	-0.004 (2)

*Geometric parameters (Å, °)*

Br1—C5	1.915 (6)	C6—H6	0.9500
O1—C2	1.362 (7)	C7—H7	0.9500
O1—H1	0.84 (7)	C8—C9	1.518 (8)
N1—C7	1.290 (7)	C8—H8A	0.9900
N1—C8	1.459 (7)	C8—H8B	0.9900
C1—C6	1.406 (7)	C9—C10	1.538 (7)
C1—C2	1.407 (8)	C9—H9A	0.9900
C1—C7	1.465 (7)	C9—H9B	0.9900
C2—C3	1.390 (8)	C10—C11	1.522 (7)
C3—C4	1.365 (8)	C10—H10A	0.9900
C3—H3	0.9500	C10—H10B	0.9900
C4—C5	1.394 (8)	C11—C11 <sup>i</sup>	1.530 (10)
C4—H4	0.9500	C11—H11A	0.9900
C5—C6	1.386 (8)	C11—H11B	0.9900

C2—O1—H1	113 (5)	N1—C8—H8A	109.3
C7—N1—C8	118.0 (5)	C9—C8—H8A	109.3
C6—C1—C2	118.6 (5)	N1—C8—H8B	109.3
C6—C1—C7	119.0 (5)	C9—C8—H8B	109.3
C2—C1—C7	122.3 (5)	H8A—C8—H8B	108.0
O1—C2—C3	119.5 (5)	C8—C9—C10	112.0 (5)
O1—C2—C1	120.1 (5)	C8—C9—H9A	109.2
C3—C2—C1	120.4 (5)	C10—C9—H9A	109.2
C4—C3—C2	121.2 (6)	C8—C9—H9B	109.2
C4—C3—H3	119.4	C10—C9—H9B	109.2
C2—C3—H3	119.4	H9A—C9—H9B	107.9
C3—C4—C5	118.7 (5)	C11—C10—C9	113.9 (5)
C3—C4—H4	120.7	C11—C10—H10A	108.8
C5—C4—H4	120.7	C9—C10—H10A	108.8
C6—C5—C4	122.0 (5)	C11—C10—H10B	108.8
C6—C5—Br1	118.9 (5)	C9—C10—H10B	108.8
C4—C5—Br1	119.0 (4)	H10A—C10—H10B	107.7
C5—C6—C1	119.1 (5)	C10—C11—C11 <sup>i</sup>	113.3 (6)
C5—C6—H6	120.4	C10—C11—H11A	108.9
C1—C6—H6	120.4	C11 <sup>i</sup> —C11—H11A	108.9
N1—C7—C1	120.0 (5)	C10—C11—H11B	108.9
N1—C7—H7	120.0	C11 <sup>i</sup> —C11—H11B	108.9
C1—C7—H7	120.0	H11A—C11—H11B	107.7
N1—C8—C9	111.5 (5)		
C6—C1—C2—O1	179.2 (5)	Br1—C5—C6—C1	-178.7 (4)
C7—C1—C2—O1	1.4 (8)	C2—C1—C6—C5	1.6 (9)
C6—C1—C2—C3	-1.3 (9)	C7—C1—C6—C5	179.5 (5)
C7—C1—C2—C3	-179.2 (6)	C8—N1—C7—C1	-178.8 (5)
O1—C2—C3—C4	179.5 (5)	C6—C1—C7—N1	175.4 (5)
C1—C2—C3—C4	0.0 (9)	C2—C1—C7—N1	-6.8 (8)
C2—C3—C4—C5	0.9 (9)	C7—N1—C8—C9	91.7 (7)
C3—C4—C5—C6	-0.6 (9)	N1—C8—C9—C10	174.6 (5)
C3—C4—C5—Br1	177.4 (4)	C8—C9—C10—C11	-77.2 (7)
C4—C5—C6—C1	-0.7 (9)	C9—C10—C11—C11 <sup>i</sup>	-178.9 (6)

Symmetry code: (i)  $-x+1, -y+2, -z-1$ .

#### Hydrogen-bond geometry ( $\text{\AA}$ , $^\circ$ )

$D-H\cdots A$	$D-H$	$H\cdots A$	$D\cdots A$	$D-H\cdots A$
O1—H1 $\cdots$ N1	0.84 (7)	1.86 (7)	2.581 (7)	144 (7)