

Acta Crystallographica Section E

Structure Reports

Online

ISSN 1600-5368

(E)-3-(2-Hydroxy-5-methylphenylimino)-indolin-2-one

Peng-Fei Zhang, Cai-Feng Bi,* Qiang Wang, Jian Zuo and Nan Zhang

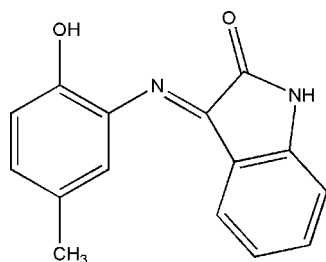
 Key Laboratory of Marine Chemistry, Theory and Technology, Ministry of Education, College of Chemistry and Chemical Engineering, Ocean University of China, Qingdao, Shandong 266100, People's Republic of China
 Correspondence e-mail: bicaifeng301@163.com

Received 24 June 2011; accepted 19 August 2011

 Key indicators: single-crystal X-ray study; $T = 298$ K; mean $\sigma(\text{C}-\text{C}) = 0.003$ Å; R factor = 0.039; wR factor = 0.114; data-to-parameter ratio = 12.6.

 In the title compound, $\text{C}_{15}\text{H}_{12}\text{N}_2\text{O}_2$, the dihedral angle between the two benzene rings is $83.55(11)^\circ$. In the crystal, the molecules are linked by $\text{O}-\text{H}\cdots\text{O}$ and $\text{N}-\text{H}\cdots\text{O}$ hydrogen bonds.

Related literature

 For general background on Schiff base ligands, see: Guo *et al.* (2011); Drozdak *et al.* (2005); Weber *et al.* (2007); Liu *et al.* (2010). For standard bond lengths, see: Allen *et al.* (1987)


Experimental

Crystal data

 $\text{C}_{15}\text{H}_{12}\text{N}_2\text{O}_2$
 $M_r = 252.27$
 Monoclinic, $P2_1/c$
 $a = 12.6211(11)$ Å

 $b = 8.7100(7)$ Å
 $c = 11.2835(10)$ Å
 $\beta = 90.780(1)^\circ$
 $V = 1240.28(18)$ Å³
 $Z = 4$
 Mo $K\alpha$ radiation
 $\mu = 0.09$ mm⁻¹
 $T = 298$ K
 $0.50 \times 0.47 \times 0.17$ mm

Data collection

 CCD area-detector diffractometer
 Absorption correction: multi-scan
 (SADABS; Sheldrick, 2003)
 $T_{\min} = 0.956$, $T_{\max} = 0.985$

 5982 measured reflections
 2182 independent reflections
 1449 reflections with $I > 2\sigma(I)$
 $R_{\text{int}} = 0.038$

Refinement

 $R[F^2 > 2\sigma(F^2)] = 0.039$
 $wR(F^2) = 0.114$
 $S = 1.02$
 2182 reflections

 173 parameters
 H-atom parameters constrained
 $\Delta\rho_{\max} = 0.16$ e Å⁻³
 $\Delta\rho_{\min} = -0.16$ e Å⁻³

Table 1

Hydrogen-bond geometry (Å, °).

$D-\text{H}\cdots A$	$D-\text{H}$	$\text{H}\cdots A$	$D\cdots A$	$D-\text{H}\cdots A$
$\text{O2}-\text{H2}\cdots\text{O1}^{\text{i}}$	0.82	1.86	2.6729 (19)	169
$\text{N1}-\text{H1}\cdots\text{O2}^{\text{ii}}$	0.86	2.06	2.842 (2)	151

 Symmetry codes: (i) $-x + 1, y + \frac{1}{2}, -z + \frac{3}{2}$; (ii) $-x + 1, -y + 1, -z + 1$.

Data collection: SMART (Siemens, 1996); cell refinement: SMART; data reduction: SAINT (Siemens, 1996); program(s) used to solve structure: SHELXS97 (Sheldrick, 2008); program(s) used to refine structure: SHELXL97 (Sheldrick, 2008); molecular graphics: SHELXTL (Sheldrick, 2008); software used to prepare material for publication: SHELXTL.

The authors acknowledge the National Science Foundation of China for its financial support of this project (project No. 21071134).

Supplementary data and figures for this paper are available from the IUCr electronic archives (Reference: RU2008).

References

- Allen, F. H., Kennard, O., Watson, D. G., Orpen, A. G. & Taylor, R. (1987). *J. Chem. Soc. Perkin Trans. 2*, pp. S1–19.
- Drozdak, R., Allaert, B., Ledoux, N., Dragutan, I., Dragutan, V. & Verpoort, F. (2005). *Coord. Chem. Rev.* **249**, 3055–3074.
- Guo, A., Zhang, S., Liu, X. & Jiao, J. (2011). *Acta Cryst.* **E67**, o285.
- Liu, S.-B., Bi, C.-F., Wang, Q., Zuo, J. & Fan, Y.-H. (2010). *Acta Cryst.* **E66**, o1361.
- Sheldrick, G. M. (2003). *SADABS*. University of Göttingen, Germany.
- Sheldrick, G. M. (2008). *Acta Cryst.* **A64**, 112–122.
- Siemens (1996). *SMART* and *SAINTE*. Siemens Analytical X-ray Instruments Inc., Madison, Wisconsin, USA.
- Weber, B., Tandon, R. & Himsl, D. (2007). *Z. Anorg. Allg. Chem.* **633**, 1159–1162.

supporting information

Acta Cryst. (2011). E67, o2493 [doi:10.1107/S1600536811034015]

(E)-3-(2-Hydroxy-5-methylphenylimino)indolin-2-one**Peng-Fei Zhang, Cai-Feng Bi, Qiang Wang, Jian Zuo and Nan Zhang****S1. Comment**

Being one of the most prevalent systems in coordination chemistry, Schiff base ligands have received much attention in recent years (Guo *et al.*, 2011), primarily due to their importance in metal complexes with catalytic activities (Drozdak *et al.*, 2005), special magnetism (Weber *et al.*, 2007) and biological properties, for example, anticancer activities (Liu *et al.*, 2010). In the present paper, the synthesis and structure of a new Schiff base ligand is reported.

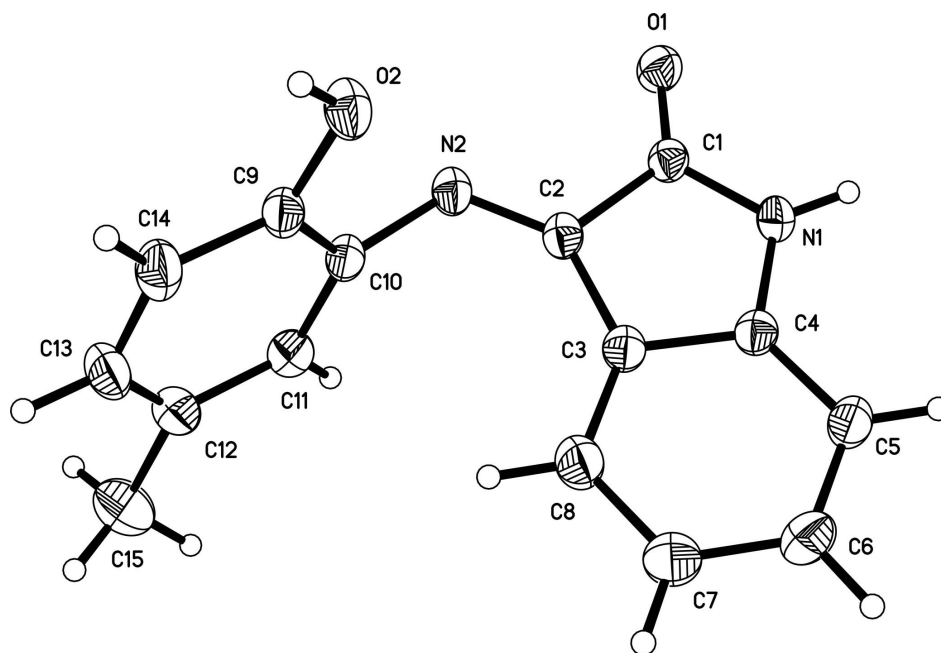
The crystal structure of the new ligand is given in Fig.1. The molecular structure of the compound is not coplanar, the dihedral angle between the two benzene rings is 83.55 °, it is almost perpendicular. The bond lengths and angles (Table 1) are within normal values (Allen *et al.*, 1987). In the crystal structure, the adjacent molecules are linked through O—H···O and N—H···O hydrogen bonding (Table 2), to generate one-dimensional chain in direction (Fig.2).

S2. Experimental

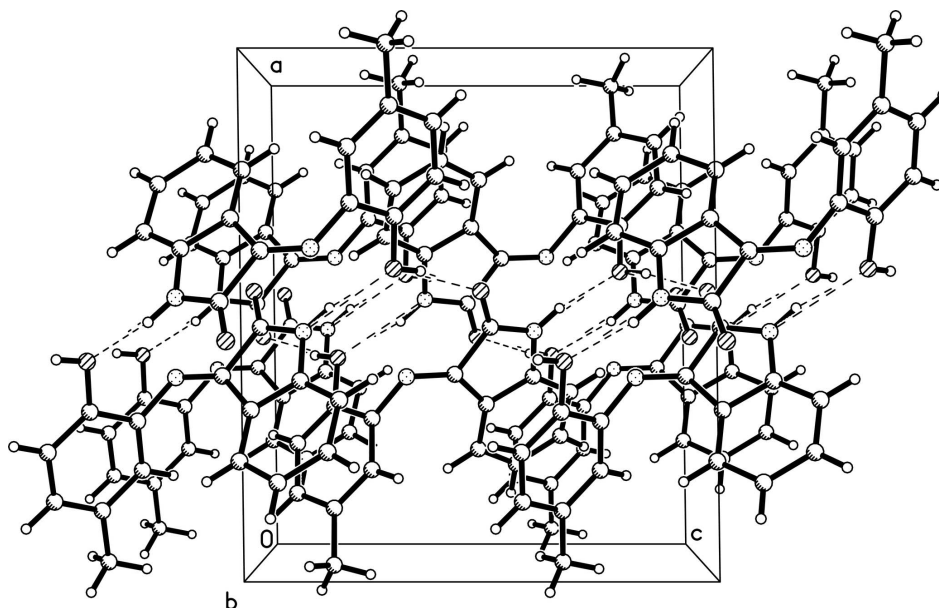
2,3-indolinedione (5 mmol, 0.736 g) was dissolved in anhydrous ethanol (20 ml), then an anhydrous ethanol solution (10 ml) of 2-amino-4-methylphenol (5 mmol, 0.612 g) was slowly added. The mixture was refluxed for 4 h at 333K, and then cooled down to room temperature. A dark brown solid separated out. The solid was filtered off, washed several times with anhydrous ethanol and dried in vacuum drier. The dark brown single-crystal of the title ligand suitable for X-ray diffraction was trained in anhydrous ethanol at room temperature.

S3. Refinement

All H-atoms were positioned geometrically and refined using a riding model, with C—H = 0.96 Å (methyl), 0.93 Å (methenyl), 0.93 Å (aromatic), and $U_{\text{iso}}(\text{H}) = 1.2U_{\text{eq}}(\text{C})$.

**Figure 1**

The structure of the title compound, showing 30% probability displacement ellipsoids and the atom-numbering scheme.

**Figure 2**

A view of the crystal structure showing chain to the *c* linked via O—H...O and N—H...O contacts.

(*E*)-3-(2-Hydroxy-5-methylphenylimino)indolin-2-one

Crystal data

$C_{15}H_{12}N_2O_2$

$M_r = 252.27$

Monoclinic, $P2_1/c$

Hall symbol: $-P2_1bc$

$a = 12.6211 (11) \text{ \AA}$

$b = 8.7100 (7) \text{ \AA}$

$c = 11.2835 (10) \text{ \AA}$

$\beta = 90.780 (1)^\circ$

$V = 1240.28 (18) \text{ \AA}^3$
 $Z = 4$
 $F(000) = 528$
 $D_x = 1.351 \text{ Mg m}^{-3}$
 Mo $K\alpha$ radiation, $\lambda = 0.71073 \text{ \AA}$
 Cell parameters from 1807 reflections

$\theta = 2.8\text{--}25.8^\circ$
 $\mu = 0.09 \text{ mm}^{-1}$
 $T = 298 \text{ K}$
 Block, dark-brown
 $0.50 \times 0.47 \times 0.17 \text{ mm}$

Data collection

CCD area-detector
 diffractometer
 Radiation source: fine-focus sealed tube
 Graphite monochromator
 φ and ω scans
 Absorption correction: multi-scan
 (SADABS; Sheldrick, 2003)
 $T_{\min} = 0.956$, $T_{\max} = 0.985$

5982 measured reflections
 2182 independent reflections
 1449 reflections with $I > 2\sigma(I)$
 $R_{\text{int}} = 0.038$
 $\theta_{\max} = 25.0^\circ$, $\theta_{\min} = 2.8^\circ$
 $h = -14 \rightarrow 14$
 $k = -10 \rightarrow 10$
 $l = -10 \rightarrow 13$

Refinement

Refinement on F^2
 Least-squares matrix: full
 $R[F^2 > 2\sigma(F^2)] = 0.039$
 $wR(F^2) = 0.114$
 $S = 1.02$
 2182 reflections
 173 parameters
 0 restraints
 Primary atom site location: structure-invariant
 direct methods
 Secondary atom site location: difference Fourier
 map

Hydrogen site location: inferred from
 neighbouring sites
 H-atom parameters constrained
 $w = 1/[\sigma^2(F_o^2) + (0.0486P)^2 + 0.3363P]$
 where $P = (F_o^2 + 2F_c^2)/3$
 $(\Delta/\sigma)_{\max} < 0.001$
 $\Delta\rho_{\max} = 0.16 \text{ e \AA}^{-3}$
 $\Delta\rho_{\min} = -0.16 \text{ e \AA}^{-3}$
 Extinction correction: SHELXL,
 $F_c^* = kF_c[1 + 0.001x F_c^2 \lambda^3 / \sin(2\theta)]^{-1/4}$
 Extinction coefficient: 0.017 (2)

Special details

Geometry. All e.s.d.'s (except the e.s.d. in the dihedral angle between two l.s. planes) are estimated using the full covariance matrix. The cell e.s.d.'s are taken into account individually in the estimation of e.s.d.'s in distances, angles and torsion angles; correlations between e.s.d.'s in cell parameters are only used when they are defined by crystal symmetry. An approximate (isotropic) treatment of cell e.s.d.'s is used for estimating e.s.d.'s involving l.s. planes.

Refinement. Refinement of F^2 against ALL reflections. The weighted R -factor wR and goodness of fit S are based on F^2 , conventional R -factors R are based on F , with F set to zero for negative F^2 . The threshold expression of $F^2 > \sigma(F^2)$ is used only for calculating R -factors(gt) etc. and is not relevant to the choice of reflections for refinement. R -factors based on F^2 are statistically about twice as large as those based on F , and R -factors based on ALL data will be even larger.

Fractional atomic coordinates and isotropic or equivalent isotropic displacement parameters (\AA^2)

	x	y	z	$U_{\text{iso}}^*/U_{\text{eq}}$
N1	0.53216 (12)	0.37862 (19)	0.37637 (13)	0.0391 (4)
H1	0.4865	0.3785	0.3191	0.047*
N2	0.62133 (12)	0.28888 (19)	0.66041 (14)	0.0404 (4)
O1	0.45391 (11)	0.19850 (16)	0.49452 (12)	0.0474 (4)
O2	0.58728 (11)	0.51425 (16)	0.82237 (12)	0.0490 (4)
H2	0.5830	0.5750	0.8776	0.073*
C1	0.52386 (15)	0.2918 (2)	0.47439 (16)	0.0358 (5)
C2	0.61738 (14)	0.3381 (2)	0.55449 (16)	0.0355 (5)
C3	0.67930 (15)	0.4476 (2)	0.48520 (17)	0.0384 (5)

C4	0.62382 (14)	0.4693 (2)	0.37841 (17)	0.0369 (5)
C5	0.65726 (16)	0.5680 (2)	0.29187 (18)	0.0465 (5)
H5	0.6188	0.5816	0.2218	0.056*
C6	0.75054 (18)	0.6460 (3)	0.3136 (2)	0.0564 (6)
H6	0.7756	0.7137	0.2567	0.068*
C7	0.80770 (18)	0.6262 (3)	0.4179 (2)	0.0611 (7)
H7	0.8704	0.6805	0.4299	0.073*
C8	0.77297 (16)	0.5266 (3)	0.5045 (2)	0.0519 (6)
H8	0.8118	0.5131	0.5744	0.062*
C9	0.68333 (15)	0.4423 (2)	0.82729 (17)	0.0400 (5)
C10	0.70454 (15)	0.3352 (2)	0.73941 (16)	0.0398 (5)
C11	0.80213 (16)	0.2627 (3)	0.73843 (19)	0.0496 (6)
H11	0.8161	0.1920	0.6789	0.059*
C12	0.87940 (17)	0.2925 (3)	0.8235 (2)	0.0566 (6)
C13	0.85588 (18)	0.3980 (3)	0.9110 (2)	0.0596 (7)
H13	0.9064	0.4195	0.9695	0.072*
C14	0.75915 (17)	0.4720 (3)	0.91347 (19)	0.0516 (6)
H14	0.7451	0.5421	0.9734	0.062*
C15	0.98450 (19)	0.2096 (4)	0.8213 (3)	0.0907 (10)
H15A	1.0391	0.2757	0.8522	0.136*
H15B	1.0006	0.1817	0.7412	0.136*
H15C	0.9806	0.1186	0.8691	0.136*

Atomic displacement parameters (Å²)

	U^{11}	U^{22}	U^{33}	U^{12}	U^{13}	U^{23}
N1	0.0391 (9)	0.0482 (10)	0.0300 (9)	0.0008 (8)	-0.0053 (7)	0.0017 (8)
N2	0.0432 (9)	0.0452 (10)	0.0326 (9)	0.0010 (8)	-0.0054 (7)	-0.0002 (8)
O1	0.0487 (8)	0.0530 (9)	0.0403 (8)	-0.0093 (7)	-0.0018 (6)	0.0006 (7)
O2	0.0542 (9)	0.0530 (9)	0.0395 (8)	0.0082 (7)	-0.0098 (7)	-0.0066 (7)
C1	0.0389 (11)	0.0384 (12)	0.0300 (11)	0.0044 (9)	0.0008 (8)	-0.0030 (9)
C2	0.0397 (10)	0.0358 (11)	0.0311 (11)	0.0069 (9)	-0.0014 (8)	-0.0030 (9)
C3	0.0399 (11)	0.0400 (12)	0.0352 (11)	0.0019 (9)	-0.0009 (9)	0.0006 (9)
C4	0.0391 (11)	0.0383 (12)	0.0335 (11)	0.0057 (9)	0.0028 (8)	-0.0010 (9)
C5	0.0520 (13)	0.0494 (13)	0.0380 (12)	0.0034 (11)	0.0011 (10)	0.0066 (10)
C6	0.0611 (14)	0.0521 (15)	0.0562 (15)	-0.0070 (12)	0.0071 (12)	0.0141 (12)
C7	0.0560 (14)	0.0610 (16)	0.0660 (16)	-0.0177 (12)	-0.0049 (12)	0.0104 (13)
C8	0.0507 (13)	0.0544 (15)	0.0502 (13)	-0.0066 (11)	-0.0090 (10)	0.0062 (11)
C9	0.0425 (12)	0.0432 (12)	0.0341 (11)	-0.0041 (9)	-0.0055 (9)	0.0061 (10)
C10	0.0424 (11)	0.0466 (13)	0.0302 (11)	-0.0049 (10)	-0.0037 (8)	0.0053 (9)
C11	0.0457 (12)	0.0609 (15)	0.0421 (13)	0.0020 (11)	0.0026 (10)	0.0035 (11)
C12	0.0414 (12)	0.0746 (17)	0.0537 (14)	-0.0034 (12)	-0.0054 (10)	0.0126 (13)
C13	0.0507 (14)	0.0753 (18)	0.0523 (15)	-0.0169 (13)	-0.0190 (11)	0.0100 (14)
C14	0.0597 (14)	0.0541 (14)	0.0405 (13)	-0.0083 (12)	-0.0115 (10)	0.0005 (11)
C15	0.0469 (14)	0.133 (3)	0.092 (2)	0.0122 (17)	-0.0062 (14)	0.013 (2)

Geometric parameters (Å, °)

N1—C1	1.345 (2)	C7—C8	1.383 (3)
N1—C4	1.401 (2)	C7—H7	0.9300
N1—H1	0.8600	C8—H8	0.9300
N2—C2	1.270 (2)	C9—C14	1.380 (3)
N2—C10	1.427 (2)	C9—C10	1.390 (3)
O1—C1	1.223 (2)	C10—C11	1.384 (3)
O2—C9	1.365 (2)	C11—C12	1.383 (3)
O2—H2	0.8200	C11—H11	0.9300
C1—C2	1.531 (3)	C12—C13	1.384 (3)
C2—C3	1.466 (3)	C12—C15	1.511 (3)
C3—C8	1.383 (3)	C13—C14	1.381 (3)
C3—C4	1.398 (3)	C13—H13	0.9300
C4—C5	1.372 (3)	C14—H14	0.9300
C5—C6	1.379 (3)	C15—H15A	0.9600
C5—H5	0.9300	C15—H15B	0.9600
C6—C7	1.383 (3)	C15—H15C	0.9600
C6—H6	0.9300		
C1—N1—C4	112.15 (16)	C3—C8—H8	120.7
C1—N1—H1	123.9	C7—C8—H8	120.7
C4—N1—H1	123.9	O2—C9—C14	123.33 (19)
C2—N2—C10	120.77 (17)	O2—C9—C10	117.30 (17)
C9—O2—H2	109.5	C14—C9—C10	119.36 (19)
O1—C1—N1	126.19 (18)	C11—C10—C9	119.46 (18)
O1—C1—C2	128.17 (17)	C11—C10—N2	120.89 (19)
N1—C1—C2	105.61 (16)	C9—C10—N2	119.23 (17)
N2—C2—C3	135.01 (18)	C12—C11—C10	121.9 (2)
N2—C2—C1	119.12 (17)	C12—C11—H11	119.1
C3—C2—C1	105.61 (15)	C10—C11—H11	119.1
C8—C3—C4	119.07 (19)	C11—C12—C13	117.6 (2)
C8—C3—C2	134.48 (18)	C11—C12—C15	120.7 (2)
C4—C3—C2	106.45 (16)	C13—C12—C15	121.7 (2)
C5—C4—C3	122.87 (19)	C14—C13—C12	121.5 (2)
C5—C4—N1	127.13 (18)	C14—C13—H13	119.2
C3—C4—N1	109.99 (17)	C12—C13—H13	119.2
C4—C5—C6	116.9 (2)	C9—C14—C13	120.2 (2)
C4—C5—H5	121.5	C9—C14—H14	119.9
C6—C5—H5	121.5	C13—C14—H14	119.9
C5—C6—C7	121.6 (2)	C12—C15—H15A	109.5
C5—C6—H6	119.2	C12—C15—H15B	109.5
C7—C6—H6	119.2	H15A—C15—H15B	109.5
C6—C7—C8	120.9 (2)	C12—C15—H15C	109.5
C6—C7—H7	119.6	H15A—C15—H15C	109.5
C8—C7—H7	119.6	H15B—C15—H15C	109.5
C3—C8—C7	118.6 (2)		

C4—N1—C1—O1	-177.50 (18)	C4—C5—C6—C7	-0.2 (3)
C4—N1—C1—C2	4.1 (2)	C5—C6—C7—C8	0.0 (4)
C10—N2—C2—C3	-4.0 (3)	C4—C3—C8—C7	0.9 (3)
C10—N2—C2—C1	-177.06 (16)	C2—C3—C8—C7	-178.5 (2)
O1—C1—C2—N2	-7.8 (3)	C6—C7—C8—C3	-0.4 (4)
N1—C1—C2—N2	170.58 (17)	O2—C9—C10—C11	177.98 (17)
O1—C1—C2—C3	177.25 (18)	C14—C9—C10—C11	-1.3 (3)
N1—C1—C2—C3	-4.36 (19)	O2—C9—C10—N2	-9.3 (3)
N2—C2—C3—C8	8.8 (4)	C14—C9—C10—N2	171.34 (18)
C1—C2—C3—C8	-177.5 (2)	C2—N2—C10—C11	-82.8 (2)
N2—C2—C3—C4	-170.7 (2)	C2—N2—C10—C9	104.6 (2)
C1—C2—C3—C4	3.1 (2)	C9—C10—C11—C12	0.7 (3)
C8—C3—C4—C5	-1.1 (3)	N2—C10—C11—C12	-171.90 (19)
C2—C3—C4—C5	178.45 (18)	C10—C11—C12—C13	0.2 (3)
C8—C3—C4—N1	179.66 (17)	C10—C11—C12—C15	179.0 (2)
C2—C3—C4—N1	-0.8 (2)	C11—C12—C13—C14	-0.4 (3)
C1—N1—C4—C5	178.56 (19)	C15—C12—C13—C14	-179.1 (2)
C1—N1—C4—C3	-2.2 (2)	O2—C9—C14—C13	-178.12 (19)
C3—C4—C5—C6	0.7 (3)	C10—C9—C14—C13	1.2 (3)
N1—C4—C5—C6	179.83 (19)	C12—C13—C14—C9	-0.3 (3)

Hydrogen-bond geometry (Å, °)

<i>D</i> —H... <i>A</i>	<i>D</i> —H	H... <i>A</i>	<i>D</i> ... <i>A</i>	<i>D</i> —H... <i>A</i>
O2—H2...O1 ⁱ	0.82	1.86	2.6729 (19)	169
N1—H1...O2 ⁱⁱ	0.86	2.06	2.842 (2)	151

Symmetry codes: (i) $-x+1, y+1/2, -z+3/2$; (ii) $-x+1, -y+1, -z+1$.