

Acta Crystallographica Section E

Structure Reports

Online

ISSN 1600-5368

3,3'-Bis(3-methoxybenzyl)-1,1'-(ethane-1,2-diyl)diimidazolium dibromide dihydrate

Hon Man Lee* and Pi-Yun Cheng

Department of Chemistry, National Changhua University of Education, Changhua, Taiwan 50058

Correspondence e-mail: leehm@cc.ncue.edu.tw

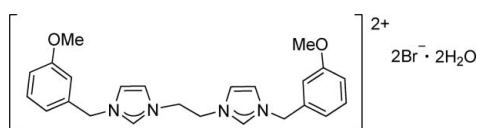
Received 10 November 2011; accepted 22 November 2011

Key indicators: single-crystal X-ray study; $T = 150$ K; mean $\sigma(\text{C}-\text{C}) = 0.002$ Å; R factor = 0.023; wR factor = 0.059; data-to-parameter ratio = 19.4.

In the title compound, $\text{C}_{24}\text{H}_{28}\text{N}_4\text{O}_2^{2+} \cdot 2\text{Br}^- \cdot 2\text{H}_2\text{O}$, the diimidazolium cation is located on an inversion center. The imidazole and the benzene rings make a dihedral angle of $68.08(04)^\circ$. In the crystal, $\text{O}-\text{H} \cdots \text{Br}$, $\text{C}-\text{H} \cdots \text{O}$ and $\text{C}-\text{H} \cdots \text{Br}$ hydrogen bonds link the diimidazolium cations, the bromide anions and the water molecules into a two-dimensional network.

Related literature

For the non-hydrated crystal structure of the title compound, see: Lee & Lu (2008). For preparation of the title compound, see: Lee *et al.* (2004).



Experimental

Crystal data

$\text{C}_{24}\text{H}_{28}\text{N}_4\text{O}_2^{2+} \cdot 2\text{Br}^- \cdot 2\text{H}_2\text{O}$
 $M_r = 600.36$
 Monoclinic, $P2_1/c$
 $a = 8.5879(3)$ Å

$b = 13.7822(6)$ Å
 $c = 11.0964(5)$ Å
 $\beta = 107.277(2)^\circ$
 $V = 1254.11(9)$ Å³

$Z = 2$
 Mo $K\alpha$ radiation
 $\mu = 3.27$ mm⁻¹

$T = 150$ K
 $0.25 \times 0.20 \times 0.20$ mm

Data collection

Bruker SMART APEXII diffractometer
 Absorption correction: multi-scan (SADABS; Sheldrick, 2003)
 $T_{\min} = 0.495$, $T_{\max} = 0.561$

9596 measured reflections
 2986 independent reflections
 2560 reflections with $I > 2\sigma$
 $R_{\text{int}} = 0.020$

Refinement

$R[F^2 > 2\sigma(F^2)] = 0.023$
 $wR(F^2) = 0.059$
 $S = 1.04$
 2986 reflections

154 parameters
 H-atom parameters constrained
 $\Delta\rho_{\max} = 0.34$ e Å⁻³
 $\Delta\rho_{\min} = -0.26$ e Å⁻³

Table 1

Hydrogen-bond geometry (Å, °).

$D-\text{H} \cdots A$	$D-\text{H}$	$\text{H} \cdots A$	$D \cdots A$	$D-\text{H} \cdots A$
$\text{O2}-\text{H12} \cdots \text{Br1}^{\text{i}}$	0.74	2.63	3.3419 (13)	161.9
$\text{O2}-\text{H13} \cdots \text{Br1}^{\text{i}}$	0.89	2.52	3.3362 (14)	153.2
$\text{C11}-\text{H1} \cdots \text{O2}^{\text{ii}}$	0.91	2.45	3.295 (2)	154.5
$\text{C1}-\text{H6} \cdots \text{Br1}^{\text{ii}}$	0.94	2.86	3.6743 (16)	145.5
$\text{C5}-\text{H4} \cdots \text{O2}^{\text{ii}}$	0.95	2.60	3.402 (2)	142.6

Symmetry codes: (i) $x, -y + \frac{1}{2}, z - \frac{1}{2}$; (ii) $x + 1, y, z$.

Data collection: APEX2 (Bruker, 2007); cell refinement: SAINT (Bruker, 2007); data reduction: SAINT; program(s) used to solve structure: SHELXS96 (Sheldrick, 2008); program(s) used to refine structure: SHELXTL (Sheldrick, 2008); molecular graphics: SHELXTL; software used to prepare material for publication: DIAMOND (Brandenburg, 2006).

We thank the National Science Council of Taiwan for financial support of this work.

Supplementary data and figures for this paper are available from the IUCr electronic archives (Reference: PV2485).

References

- Brandenburg, K. (2006). *DIAMOND*. Crystal Impact GbR, Bonn, Germany.
 Bruker (2007). *APEX2* and *SAINTE*. Bruker AXS Inc., Madison, Wisconsin, USA.
 Lee, H. M. & Lu, C.-Y. (2008). *Acta Cryst.* **E64**, o2086.
 Lee, H. M., Lu, C. Y., Chen, C. Y., Chen, W. L., Lin, H. C., Chiu, P. L. & Cheng, P. Y. (2004). *Tetrahedron*, **60**, 5807–5825.
 Sheldrick, G. M. (2003). *SADABS*. University of Göttingen, Germany.
 Sheldrick, G. M. (2008). *Acta Cryst.* **A64**, 112–122.

supporting information

Acta Cryst. (2011). E67, o3464 [https://doi.org/10.1107/S1600536811050240]

3,3'-Bis(3-methoxybenzyl)-1,1'-(ethane-1,2-diyl)diimidazolium dibromide dihydrate

Hon Man Lee and Pi-Yun Cheng

S1. Comment

The non-hydrated crystal structure of the same imidazolium bromide, has been published previously (Lee & Lu, 2008). The title compound is a dihydrated salt. The structure of the title compound (Fig. 1) is similar to the non-hydrated structure, wherein the bis(imidazolium) dication is also located on an inversion center with the two imidazole rings being parallel to each other. The imidazole and the benzene rings in the title compound make a dihedral angle of $68.08(04)^\circ$, which is much smaller than $77.25(16)^\circ$ reported in the non-hydrated structure. Intermolecular hydrogen bonds of the type $O-H\cdots Br$, $C-H\cdots O$ and $C-H\cdots Br$ link the imidazolium cations, bromide anions and water solvent molecules, forming a two-dimensional hydrogen-bonded network (Fig. 2 and Table 1).

S2. Experimental

The compound was prepared according to the literature procedure (Lee *et al.*, 2004). Suitable crystals were obtained by slow diffusion of diethyl ether into a wet DMF solution of the compound at room temperature.

S3. Refinement

The methyl hydrogen atoms were positioned geometrically and refined as riding atoms, with $C-H = 0.98 \text{ \AA}$ with $U_{iso}(H) = 1.5U_{eq}(C)$. The other hydrogen atoms are located from the difference Fourier maps, allowed to refine in the initial refinement cycles and then fixed at those positions during the final cycles of refinement.

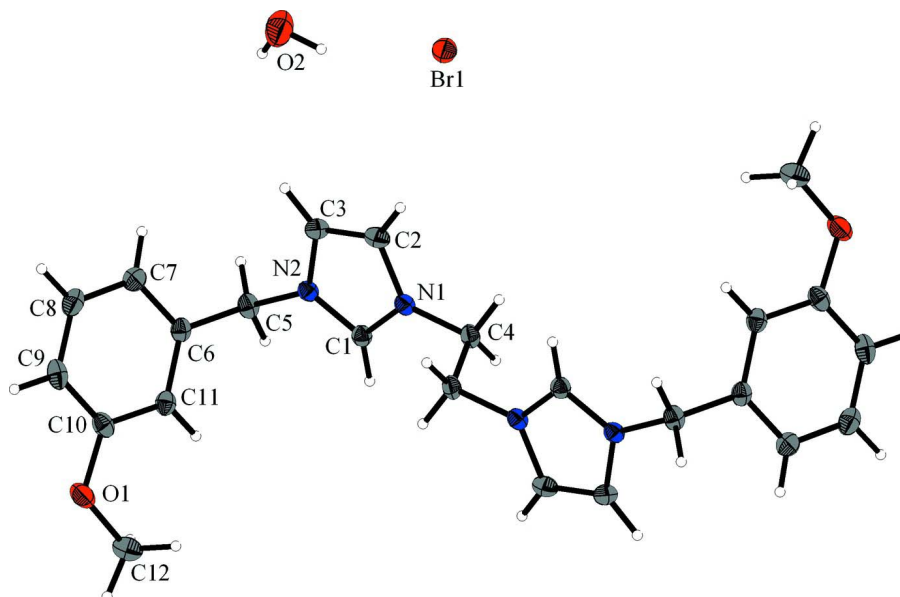


Figure 1

The structure of the title compound, showing 50% probability displacement ellipsoids for the non-hydrogen atoms. The H atoms are depicted by circles of an arbitrary radius. The unlabelled atoms of the imidazolium cation are related to the labelled ones by symmetry operation: $2 - x, -y, 1 - z$; for the anion, the symmetry operation for Br1 is $x, 1/2 - y, -1/2 + z$.

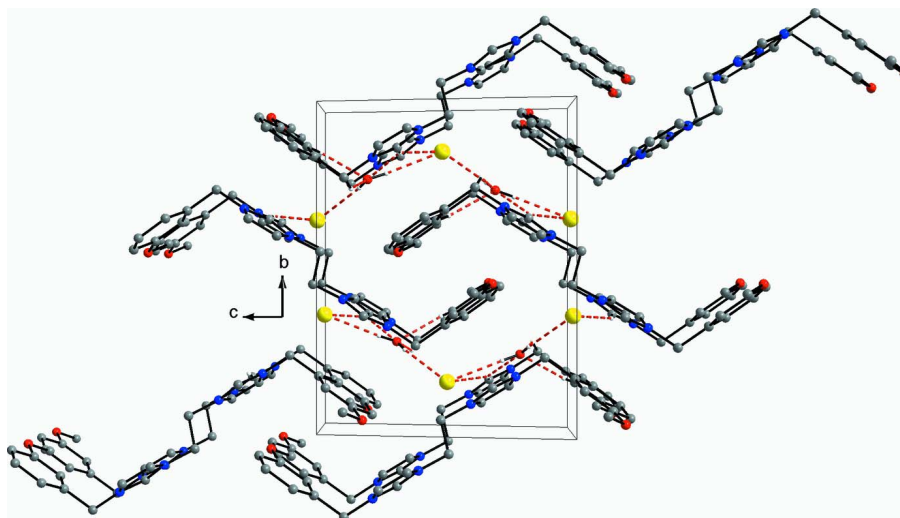


Figure 2

Unit cell packing of the title compound showing hydrogen bonding interactions.

3,3'-Bis(3-methoxybenzyl)-1,1'-(ethane-1,2-diyl)diimidazolium dibromide dihydrate

Crystal data

$C_{24}H_{28}N_4O_2^{2+} \cdot 2Br^- \cdot 2H_2O$

$M_r = 600.36$

Monoclinic, $P2_1/c$

Hall symbol: $-P 2_1/c$

$a = 8.5879 (3) \text{ \AA}$

$b = 13.7822 (6) \text{ \AA}$

$c = 11.0964 (5) \text{ \AA}$

$\beta = 107.277 (2)^\circ$

$V = 1254.11 (9) \text{ \AA}^3$

$Z = 2$

$F(000) = 612$

$D_x = 1.590 \text{ Mg m}^{-3}$

Mo $K\alpha$ radiation, $\lambda = 0.71073 \text{ \AA}$
 Cell parameters from 4076 reflections
 $\theta = 2.4\text{--}27.8^\circ$
 $\mu = 3.27 \text{ mm}^{-1}$

$T = 150 \text{ K}$
 Block, white
 $0.25 \times 0.20 \times 0.20 \text{ mm}$

Data collection

Bruker SMART APEXII
 diffractometer
 Radiation source: fine-focus sealed tube
 Graphite monochromator
 ω scans
 Absorption correction: multi-scan
 (SADABS; Sheldrick, 2003)
 $T_{\min} = 0.495$, $T_{\max} = 0.561$

9596 measured reflections
 2986 independent reflections
 2560 reflections with $I > 2\sigma$
 $R_{\text{int}} = 0.020$
 $\theta_{\max} = 27.9^\circ$, $\theta_{\min} = 2.4^\circ$
 $h = -11 \rightarrow 11$
 $k = -18 \rightarrow 17$
 $l = -10 \rightarrow 14$

Refinement

Refinement on F^2
 Least-squares matrix: full
 $R[F^2 > 2\sigma(F^2)] = 0.023$
 $wR(F^2) = 0.059$
 $S = 1.04$
 2986 reflections
 154 parameters
 0 restraints
 Primary atom site location: structure-invariant
 direct methods

Secondary atom site location: difference Fourier
 map
 Hydrogen site location: inferred from
 neighbouring sites
 H-atom parameters constrained
 $w = 1/[\sigma^2(F_o^2) + (0.0332P)^2 + 0.2216P]$
 where $P = (F_o^2 + 2F_c^2)/3$
 $(\Delta/\sigma)_{\max} = 0.004$
 $\Delta\rho_{\max} = 0.34 \text{ e \AA}^{-3}$
 $\Delta\rho_{\min} = -0.26 \text{ e \AA}^{-3}$

Special details

Geometry. All e.s.d.'s (except the e.s.d. in the dihedral angle between two l.s. planes) are estimated using the full covariance matrix. The cell e.s.d.'s are taken into account individually in the estimation of e.s.d.'s in distances, angles and torsion angles; correlations between e.s.d.'s in cell parameters are only used when they are defined by crystal symmetry. An approximate (isotropic) treatment of cell e.s.d.'s is used for estimating e.s.d.'s involving l.s. planes.

Refinement. Refinement of F^2 against ALL reflections. The weighted R -factor wR and goodness of fit S are based on F^2 , conventional R -factors R are based on F , with F set to zero for negative F^2 . The threshold expression of $F^2 > \sigma(F^2)$ is used only for calculating R -factors(gt) etc. and is not relevant to the choice of reflections for refinement. R -factors based on F^2 are statistically about twice as large as those based on F , and R -factors based on ALL data will be even larger.

Fractional atomic coordinates and isotropic or equivalent isotropic displacement parameters (\AA^2)

	<i>x</i>	<i>y</i>	<i>z</i>	$U_{\text{iso}}^*/U_{\text{eq}}$
Br1	0.359161 (19)	0.146752 (12)	0.490121 (15)	0.02394 (7)
C1	0.922203 (19)	0.14465 (11)	0.31701 (14)	0.0160 (3)
C11	0.9179 (2)	0.13818 (11)	-0.03275 (15)	0.0177 (3)
C5	0.8031 (2)	0.23349 (11)	0.11436 (14)	0.0184 (3)
C3	0.6531 (2)	0.14528 (12)	0.24893 (16)	0.0209 (3)
C7	0.6246 (2)	0.14644 (12)	-0.07555 (16)	0.0222 (3)
C6	0.7804 (2)	0.17085 (11)	-0.00127 (14)	0.0168 (3)
C10	0.8960 (2)	0.08036 (12)	-0.13955 (14)	0.0193 (3)
C4	0.96949 (19)	0.04905 (12)	0.51517 (14)	0.0180 (3)
C8	0.6059 (2)	0.08805 (13)	-0.18098 (15)	0.0236 (4)
C2	0.69825 (19)	0.09468 (12)	0.35762 (15)	0.0204 (3)
C9	0.7400 (2)	0.05481 (12)	-0.21304 (14)	0.0225 (4)

N1	0.86714 (16)	0.09507 (9)	0.39930 (11)	0.0157 (3)
N2	0.79482 (16)	0.17629 (10)	0.22518 (12)	0.0154 (3)
O1	1.02188 (14)	0.04640 (9)	-0.18024 (11)	0.0257 (3)
O2	0.21749 (17)	0.23175 (12)	0.19624 (13)	0.0436 (4)
C12	1.1839 (2)	0.07413 (14)	-0.10897 (17)	0.0264 (4)
H12A	1.2623	0.0455	-0.1472	0.040*
H12B	1.2066	0.0509	-0.0220	0.040*
H12C	1.1934	0.1450	-0.1089	0.040*
H1	1.0194	0.1540	0.0159	0.020*
H3	0.5023	0.0720	-0.2314	0.021*
H2	0.5349	0.1704	-0.0595	0.026*
H5	0.7189	0.2815	0.1019	0.015*
H4	0.9057	0.2648	0.1384	0.016*
H6	1.0329	0.1567	0.3255	0.017*
H7	0.5462	0.1622	0.1957	0.029*
H8	1.0586	0.0915	0.5535	0.025*
H9	0.9081	0.0408	0.5698	0.023*
H12	0.2685	0.2563	0.1623	0.059*
H13	0.2877	0.2129	0.2690	0.062*
H15	0.7253	0.0152	-0.2863	0.031*
H16	0.6386	0.0624	0.4035	0.025*

Atomic displacement parameters (Å²)

	U^{11}	U^{22}	U^{33}	U^{12}	U^{13}	U^{23}
Br1	0.02082 (10)	0.02866 (11)	0.02254 (10)	-0.00226 (7)	0.00672 (7)	0.00185 (7)
C1	0.0177 (7)	0.0153 (8)	0.0149 (7)	0.0004 (6)	0.0048 (6)	-0.0012 (6)
C11	0.0196 (8)	0.0171 (8)	0.0155 (7)	-0.0023 (6)	0.0040 (6)	0.0015 (6)
C5	0.0249 (8)	0.0143 (8)	0.0164 (7)	0.0018 (7)	0.0068 (6)	0.0018 (6)
C3	0.0155 (7)	0.0257 (9)	0.0216 (8)	0.0017 (7)	0.0058 (6)	-0.0015 (7)
C7	0.0215 (8)	0.0244 (9)	0.0199 (8)	0.0040 (7)	0.0047 (7)	0.0021 (7)
C6	0.0216 (8)	0.0133 (8)	0.0148 (7)	0.0015 (6)	0.0042 (6)	0.0021 (6)
C10	0.0261 (8)	0.0171 (8)	0.0170 (7)	0.0003 (7)	0.0102 (7)	0.0027 (6)
C4	0.0223 (8)	0.0192 (8)	0.0129 (7)	0.0012 (7)	0.0058 (6)	0.0009 (6)
C8	0.0218 (8)	0.0267 (9)	0.0188 (8)	-0.0036 (7)	0.0005 (6)	0.0009 (7)
C2	0.0178 (8)	0.0220 (9)	0.0239 (8)	-0.0009 (7)	0.0101 (7)	-0.0004 (7)
C9	0.0317 (9)	0.0204 (9)	0.0153 (7)	-0.0060 (7)	0.0069 (7)	-0.0026 (6)
N1	0.0182 (6)	0.0145 (7)	0.0156 (6)	0.0010 (5)	0.0068 (5)	0.0001 (5)
N2	0.0172 (6)	0.0141 (6)	0.0157 (6)	0.0009 (5)	0.0063 (5)	-0.0006 (5)
O1	0.0270 (6)	0.0312 (7)	0.0227 (6)	-0.0013 (5)	0.0129 (5)	-0.0059 (5)
O2	0.0347 (8)	0.0646 (11)	0.0281 (7)	-0.0162 (7)	0.0040 (6)	0.0061 (7)
C12	0.0248 (9)	0.0262 (9)	0.0319 (9)	-0.0004 (7)	0.0142 (7)	-0.0004 (7)

Geometric parameters (Å, °)

C1—N2	1.327 (2)	C10—C9	1.391 (2)
C1—N1	1.3337 (19)	C4—N1	1.4686 (19)
C1—H6	0.9430	C4—C4 ⁱ	1.523 (3)

C11—C10	1.394 (2)	C4—H8	0.9571
C11—C6	1.401 (2)	C4—H9	0.9209
C11—H1	0.9051	C8—C9	1.381 (2)
C5—N2	1.4800 (19)	C8—H3	0.9264
C5—C6	1.510 (2)	C2—N1	1.385 (2)
C5—H5	0.9596	C2—H16	0.9355
C5—H4	0.9459	C9—H15	0.9552
C3—C2	1.347 (2)	O1—C12	1.433 (2)
C3—N2	1.387 (2)	O2—H12	0.7395
C3—H7	0.9616	O2—H13	0.8910
C7—C6	1.388 (2)	C12—H12A	0.9800
C7—C8	1.389 (2)	C12—H12B	0.9800
C7—H2	0.9033	C12—H12C	0.9800
C10—O1	1.3720 (19)		
N2—C1—N1	108.44 (13)	N1—C4—H9	108.6
N2—C1—H6	126.5	C4 ⁱ —C4—H9	109.7
N1—C1—H6	125.0	H8—C4—H9	108.8
C10—C11—C6	118.97 (15)	C9—C8—C7	120.81 (15)
C10—C11—H1	120.5	C9—C8—H3	119.4
C6—C11—H1	120.5	C7—C8—H3	119.8
N2—C5—C6	112.06 (13)	C3—C2—N1	106.92 (13)
N2—C5—H5	105.5	C3—C2—H16	132.5
C6—C5—H5	111.7	N1—C2—H16	120.6
N2—C5—H4	106.2	C8—C9—C10	119.78 (15)
C6—C5—H4	112.0	C8—C9—H15	119.9
H5—C5—H4	109.0	C10—C9—H15	120.3
C2—C3—N2	107.13 (14)	C1—N1—C2	108.74 (13)
C2—C3—H7	130.1	C1—N1—C4	125.41 (13)
N2—C3—H7	122.7	C2—N1—C4	125.85 (13)
C6—C7—C8	119.38 (15)	C1—N2—C3	108.76 (13)
C6—C7—H2	121.5	C1—N2—C5	125.55 (13)
C8—C7—H2	119.0	C3—N2—C5	125.68 (13)
C7—C6—C11	120.59 (15)	C10—O1—C12	117.28 (12)
C7—C6—C5	120.07 (14)	H12—O2—H13	104.6
C11—C6—C5	119.34 (15)	O1—C12—H12A	109.5
O1—C10—C9	115.89 (14)	O1—C12—H12B	109.5
O1—C10—C11	123.64 (15)	H12A—C12—H12B	109.5
C9—C10—C11	120.47 (15)	O1—C12—H12C	109.5
N1—C4—C4 ⁱ	110.22 (15)	H12A—C12—H12C	109.5
N1—C4—H8	108.5	H12B—C12—H12C	109.5
C4 ⁱ —C4—H8	111.0		

Symmetry code: (i) $-x+2, -y, -z+1$.

Hydrogen-bond geometry (\AA , $^\circ$)

$D-H\cdots A$	$D-H$	$H\cdots A$	$D\cdots A$	$D-H\cdots A$
O2—H12 \cdots Br1 ⁱⁱ	0.74	2.63	3.3419 (13)	161.9

O2—H13···Br1	0.89	2.52	3.3362 (14)	153.2
C11—H1···O2 ⁱⁱⁱ	0.91	2.45	3.295 (2)	154.5
C1—H6···Br1 ⁱⁱⁱ	0.94	2.86	3.6743 (16)	145.5
C5—H4···O2 ⁱⁱⁱ	0.95	2.60	3.402 (2)	142.6

Symmetry codes: (ii) $x, -y+1/2, z-1/2$; (iii) $x+1, y, z$.