

Acta Crystallographica Section E

Structure Reports

Online

ISSN 1600-5368

Bis(3-hydroxypropanaminium) naphthalene-1,5-disulfonate

Yu Jin

Ordered Matter Science Research Center, Southeast University, Nanjing 211189, People's Republic of China

Correspondence e-mail: jinyunhao@yahoo.cn

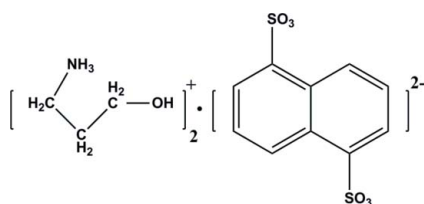
Received 9 November 2011; accepted 9 December 2011

Key indicators: single-crystal X-ray study; $T = 293$ K; mean $\sigma(\text{C}-\text{C}) = 0.004$ Å; R factor = 0.054; wR factor = 0.156; data-to-parameter ratio = 17.7.

In the title molecular salt, $2\text{C}_3\text{H}_{10}\text{NO}^+\cdot\text{C}_{10}\text{H}_6\text{O}_6\text{S}_2^{2-}$, the cations and anions are associated *via* $\text{N}-\text{H}\cdots\text{O}$ and $\text{O}-\text{H}\cdots\text{O}$ hydrogen-bonding interactions, giving rise to a three-dimensional structure with zigzag rows of cations lying between rows of anions. The asymmetric unit contains one cation and one half-anion, which is related to the remainder of the molecule by an inversion center.

Related literature

The title compound was studied as part of a search for simple ferroelectric compounds. For general background to ferroelectric metal-organic frameworks, see: Ye *et al.* (2006); Zhang *et al.* (2008, 2009, 2010); Fu *et al.* (2009).



Experimental

Crystal data

 $2\text{C}_3\text{H}_{10}\text{NO}^+\cdot\text{C}_{10}\text{H}_6\text{O}_6\text{S}_2^{2-}$ $M_r = 438.51$ Monoclinic, $P2_1/c$ $a = 10.004$ (2) Å $b = 8.8311$ (18) Å $c = 11.183$ (2) Å $\beta = 92.79$ (3)° $V = 986.8$ (3) Å³ $Z = 2$ Mo $K\alpha$ radiation $\mu = 0.32$ mm⁻¹
 $T = 293$ K $0.3 \times 0.3 \times 0.2$ mm

Data collection

Rigaku Mercury CCD diffractometer
Absorption correction: multi-scan (*CrystalClear*; Rigaku, 2005)
 $T_{\min} = 0.489$, $T_{\max} = 1.000$ 9820 measured reflections
2268 independent reflections
2135 reflections with $I > 2\sigma(I)$
 $R_{\text{int}} = 0.029$

Refinement

 $R[F^2 > 2\sigma(F^2)] = 0.054$
 $wR(F^2) = 0.156$
 $S = 1.08$
2268 reflections128 parameters
H-atom parameters constrained
 $\Delta\rho_{\max} = 0.58$ e Å⁻³
 $\Delta\rho_{\min} = -0.63$ e Å⁻³

Table 1

Hydrogen-bond geometry (Å, °).

$D-\text{H}\cdots A$	$D-\text{H}$	$\text{H}\cdots A$	$D\cdots A$	$D-\text{H}\cdots A$
$\text{O4}-\text{H4A}\cdots\text{O1}^{\text{i}}$	0.82	1.95	2.772 (3)	177
$\text{N1}-\text{H1D}\cdots\text{O3}^{\text{ii}}$	0.89	1.93	2.768 (3)	157
$\text{N1}-\text{H1C}\cdots\text{O4}^{\text{iii}}$	0.89	2.07	2.854 (3)	147

Symmetry codes: (i) $x - 1, y, z$; (ii) $-x + 1, y - \frac{1}{2}, -z + \frac{3}{2}$; (iii) $x, -y + \frac{1}{2}, z + \frac{1}{2}$.

Data collection: *CrystalClear* (Rigaku, 2005); cell refinement: *CrystalClear*; data reduction: *CrystalClear*; program(s) used to solve structure: *SHELXS97* (Sheldrick, 2008); program(s) used to refine structure: *SHELXL97* (Sheldrick, 2008); molecular graphics: *SHELXTL* (Sheldrick, 2008); software used to prepare material for publication: *SHELXL97*.

The author thanks the Ordered Matter Science Research Center, Southeast University, for its excellent experimental conditions and its generous financial support.

Supplementary data and figures for this paper are available from the IUCr electronic archives (Reference: E22272).

References

- Fu, D.-W., Ge, J.-Z., Dai, J., Ye, H.-Y. & Qu, Z.-R. (2009). *Inorg. Chem. Commun.* **12**, 994–997.
- Rigaku (2005). *CrystalClear*. Rigaku Corporation, Tokyo, Japan.
- Sheldrick, G. M. (2008). *Acta Cryst.* **A64**, 112–122.
- Ye, Q., Song, Y.-M., Wang, G.-X., Chen, K. & Fu, D.-W. (2006). *J. Am. Chem. Soc.* **128**, 6554–6555.
- Zhang, W., Li, Z.-C., Xiong, R.-G., Nakamura, T. & Huang, S.-P. (2009). *J. Am. Chem. Soc.* **131**, 12544–12545.
- Zhang, W., Xiong, R.-G. & Huang, S.-P. D. (2008). *J. Am. Chem. Soc.* **130**, 10468–10469.
- Zhang, W., Ye, H.-Y., Cai, H.-L., Ge, J.-Z. & Xiong, R.-G. (2010). *J. Am. Chem. Soc.* **132**, 7300–7302.

supporting information

Acta Cryst. (2012). E68, o212 [doi:10.1107/S1600536811053141]

Bis(3-hydroxypropanaminium) naphthalene-1,5-disulfonate**Yu Jin****S1. Comment**

Ferroelectric compounds have displayed such technical applications as ferroelectric random access memories (FeRAM), ferroelectric field-effect transistors, infrared detectors, piezoelectric sensors, nonlinear optical devices due to their excellent ferroelectric, piezoelectric, pyroelectric, and optical properties. A large number of new ferroelectric metal-organic coordination compounds corresponding to the necessary requirements for ferroelectric properties have been found, yet other necessary conditions, such as a phase transition, a good electric hysteresis loop and electric domain, and a dielectric anomaly, are often missed (Zhang *et al.*, 2009). Therefore pure organic compounds are of great potential and can make up for the drawbacks found in ferroelectric metal-organic coordination compounds. Reversible phase transitions remain one of the prominent properties for ferroelectrics. There exists a series of compounds in which the components can be arranged in a disordered fashion at a relatively high temperature and in an ordered fashion at a relatively low temperature and where the transition is reversible, which is called a reversible structural transition (Fu *et al.*, 2009; Zhang *et al.*, 2010; Zhang *et al.*, 2008; Ye *et al.*, 2006). The transition from the disordered arrangement to the ordered one leads to a sharp change in the physical properties of the compound. As part of our search for simple ferroelectric compounds I have investigated the title compound and report here its room temperature structure.

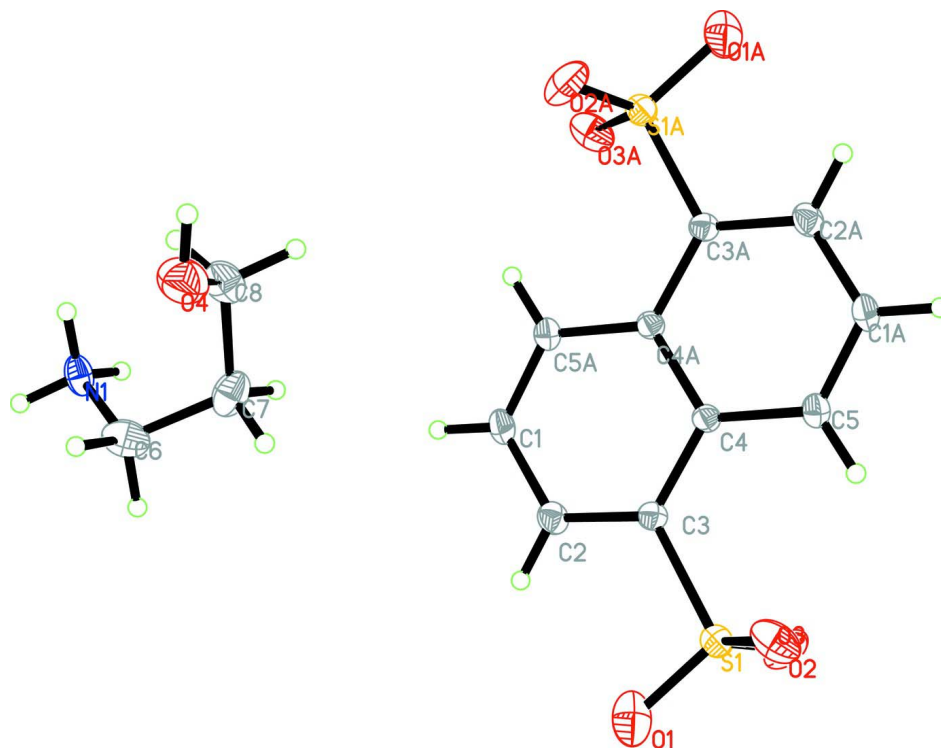
The centrosymmetric anion and one cation are shown in Fig. 1 with the hydrogen bonds listed in Table 1. The existence of numerous hydrogen-bonding interactions helps to make the substance more stable, so that it forms a three-dimensional layered structure. These interactions tie the cations and anions together in sheets with zigzag rows of cations lying between rows of anions (Fig. 2).

S2. Experimental

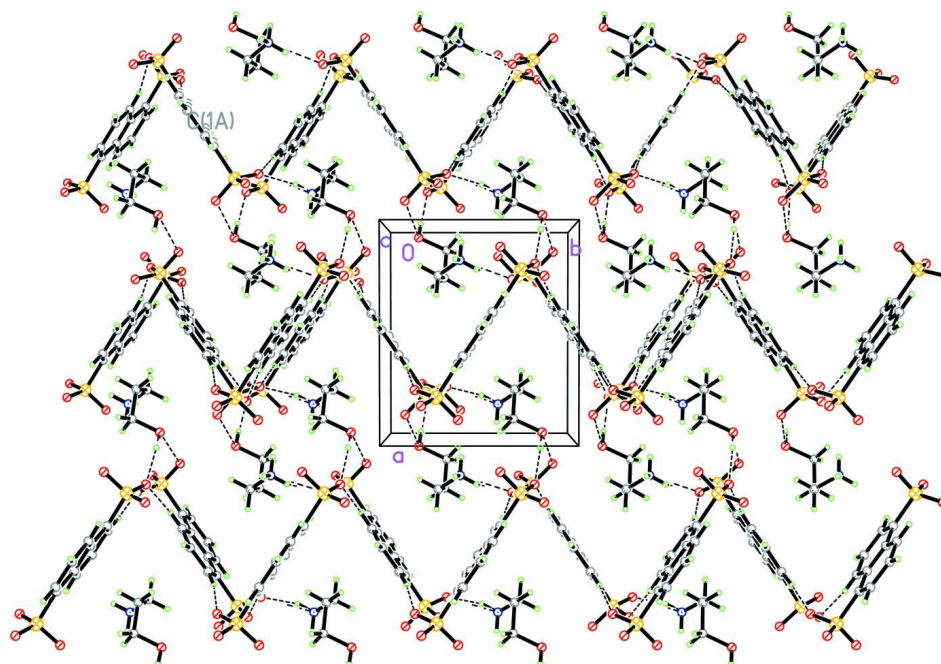
(C₃H₁₀NO)₂(C₁₀H₆O₆S₂) was formed from a mixture of NH₂(CH₂)₃OH (150.2 mg, 2.00 mmol), C₁₀H₈O₆S₂ (288.28 mg, 1.00 mmol), and distilled water (10 ml), which was stirred a few minutes at room temperature, giving a clear transparent solution. After evaporation for a few days, block colorless crystals suitable for X-ray diffraction were obtained in about 78% yield and filtered and washed with distilled water.

S3. Refinement

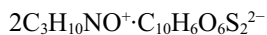
H atoms bound to carbon and nitrogen were placed at idealized positions [C—H = 0.93–0.97 Å, O—H = 0.82 Å and N—H = 0.89 Å] and allowed to ride on their parent atoms with U_{iso} fixed at 1.2 $U_{\text{eq}}(\text{C}, \text{N})$.

**Figure 1**

Crystal structure of the title compound with labelling and displacement ellipsoids drawn at the 30% probability level.

**Figure 2**

Crystal structure of the title compound with a view along the *c* axis. Intermolecular interactions are shown as dashed lines.

Bis(3-hydroxypropanaminium) naphthalene-1,5-disulfonate*Crystal data* $M_r = 438.51$ Monoclinic, $P2_1/c$ $a = 10.004 (2) \text{ \AA}$ $b = 8.8311 (18) \text{ \AA}$ $c = 11.183 (2) \text{ \AA}$ $\beta = 92.79 (3)^\circ$ $V = 986.8 (3) \text{ \AA}^3$ $Z = 2$ $F(000) = 464$ $D_x = 1.476 \text{ Mg m}^{-3}$ Mo $K\alpha$ radiation, $\lambda = 0.71073 \text{ \AA}$

Cell parameters from 3450 reflections

 $\theta = 6.2\text{--}55.3^\circ$ $\mu = 0.32 \text{ mm}^{-1}$ $T = 293 \text{ K}$

Block, colorless

 $0.3 \times 0.3 \times 0.2 \text{ mm}$ *Data collection*Rigaku Mercury CCD
diffractometer

Radiation source: fine-focus sealed tube

Graphite monochromator

 ω scans

Absorption correction: multi-scan

(CrystalClear; Rigaku, 2005) $T_{\min} = 0.489, T_{\max} = 1.000$

9820 measured reflections

2268 independent reflections

2135 reflections with $I > 2\sigma(I)$ $R_{\text{int}} = 0.029$ $\theta_{\max} = 27.5^\circ, \theta_{\min} = 3.1^\circ$ $h = -12 \rightarrow 12$ $k = -11 \rightarrow 11$ $l = -14 \rightarrow 14$ *Refinement*Refinement on F^2

Least-squares matrix: full

 $R[F^2 > 2\sigma(F^2)] = 0.054$ $wR(F^2) = 0.156$ $S = 1.08$

2268 reflections

128 parameters

0 restraints

Primary atom site location: structure-invariant
direct methodsSecondary atom site location: difference Fourier
mapHydrogen site location: inferred from
neighbouring sites

H-atom parameters constrained

 $w = 1/[\sigma^2(F_o^2) + (0.0777P)^2 + 1.2249P]$ where $P = (F_o^2 + 2F_c^2)/3$ $(\Delta/\sigma)_{\max} < 0.001$ $\Delta\rho_{\max} = 0.58 \text{ e \AA}^{-3}$ $\Delta\rho_{\min} = -0.63 \text{ e \AA}^{-3}$ Extinction correction: *SHELXL97* (Sheldrick,
2008), $F_c^* = kF_c[1 + 0.001x F_c^2 \lambda^3 / \sin(2\theta)]^{-1/4}$

Extinction coefficient: 0.254 (15)

Special details

Geometry. All e.s.d.'s (except the e.s.d. in the dihedral angle between two l.s. planes) are estimated using the full covariance matrix. The cell e.s.d.'s are taken into account individually in the estimation of e.s.d.'s in distances, angles and torsion angles; correlations between e.s.d.'s in cell parameters are only used when they are defined by crystal symmetry. An approximate (isotropic) treatment of cell e.s.d.'s is used for estimating e.s.d.'s involving l.s. planes.

Refinement. Refinement of F^2 against ALL reflections. The weighted R -factor wR and goodness of fit S are based on F^2 , conventional R -factors R are based on F , with F set to zero for negative F^2 . The threshold expression of $F^2 > \sigma(F^2)$ is used only for calculating R -factors(gt) etc. and is not relevant to the choice of reflections for refinement. R -factors based on F^2 are statistically about twice as large as those based on F , and R -factors based on ALL data will be even larger.

Fractional atomic coordinates and isotropic or equivalent isotropic displacement parameters (\AA^2)

	x	y	z	$U_{\text{iso}}^*/U_{\text{eq}}$
C1	0.4862 (3)	-0.0066 (3)	0.7251 (2)	0.0316 (5)
H1B	0.4639	-0.0242	0.8037	0.038*
C2	0.5997 (2)	0.0809 (3)	0.7025 (2)	0.0293 (5)

H2A	0.6513	0.1217	0.7660	0.035*
C3	0.6347 (2)	0.1062 (2)	0.58760 (19)	0.0243 (5)
C4	0.5578 (2)	0.0439 (2)	0.48811 (18)	0.0227 (5)
C5	0.5915 (2)	0.0660 (3)	0.36695 (19)	0.0274 (5)
H5A	0.6675	0.1216	0.3505	0.033*
C6	0.2313 (3)	0.2177 (3)	1.0492 (3)	0.0468 (7)
H6A	0.3213	0.2261	1.0849	0.056*
H6B	0.1862	0.3135	1.0606	0.056*
C7	0.2388 (3)	0.1877 (3)	0.9175 (3)	0.0444 (7)
H7A	0.2867	0.0936	0.9068	0.053*
H7B	0.2900	0.2681	0.8824	0.053*
C8	0.1045 (3)	0.1771 (3)	0.8510 (3)	0.0455 (7)
H8A	0.1151	0.1265	0.7750	0.055*
H8B	0.0448	0.1163	0.8971	0.055*
N1	0.1620 (2)	0.1016 (2)	1.10823 (18)	0.0337 (5)
H1C	0.1596	0.1236	1.1858	0.051*
H1D	0.2041	0.0138	1.0994	0.051*
H1E	0.0789	0.0946	1.0766	0.051*
O1	0.8140 (2)	0.2850 (3)	0.68268 (19)	0.0555 (7)
O2	0.8824 (2)	0.1062 (2)	0.5327 (2)	0.0544 (6)
O3	0.7522 (2)	0.3249 (2)	0.4755 (2)	0.0477 (6)
O4	0.0430 (3)	0.3286 (3)	0.8284 (2)	0.0597 (7)
H4A	-0.0252	0.3192	0.7853	0.090*
S1	0.78281 (5)	0.21407 (7)	0.56780 (5)	0.0287 (3)

Atomic displacement parameters (Å²)

	U^{11}	U^{22}	U^{33}	U^{12}	U^{13}	U^{23}
C1	0.0386 (13)	0.0368 (12)	0.0198 (10)	-0.0004 (10)	0.0053 (8)	0.0012 (9)
C2	0.0342 (12)	0.0317 (11)	0.0217 (10)	-0.0001 (9)	-0.0020 (8)	-0.0042 (8)
C3	0.0247 (10)	0.0233 (10)	0.0248 (10)	0.0014 (8)	-0.0003 (8)	0.0001 (8)
C4	0.0259 (10)	0.0206 (9)	0.0217 (10)	0.0033 (8)	0.0013 (8)	-0.0001 (7)
C5	0.0304 (11)	0.0281 (11)	0.0241 (10)	-0.0018 (8)	0.0051 (8)	0.0018 (8)
C6	0.0530 (17)	0.0347 (14)	0.0515 (17)	-0.0034 (12)	-0.0110 (14)	0.0036 (12)
C7	0.0441 (15)	0.0363 (14)	0.0541 (17)	0.0039 (11)	0.0158 (13)	0.0092 (12)
C8	0.0631 (19)	0.0346 (14)	0.0389 (14)	-0.0114 (13)	0.0047 (13)	-0.0003 (11)
N1	0.0504 (12)	0.0239 (9)	0.0275 (10)	0.0065 (9)	0.0082 (9)	-0.0002 (7)
O1	0.0463 (12)	0.0836 (17)	0.0363 (11)	-0.0292 (11)	-0.0021 (9)	-0.0123 (10)
O2	0.0376 (11)	0.0419 (11)	0.0858 (17)	0.0065 (9)	0.0251 (11)	0.0102 (11)
O3	0.0583 (13)	0.0309 (10)	0.0524 (12)	-0.0130 (9)	-0.0124 (10)	0.0137 (9)
O4	0.0562 (14)	0.0665 (15)	0.0552 (13)	0.0032 (12)	-0.0102 (10)	-0.0073 (12)
S1	0.0277 (4)	0.0296 (4)	0.0285 (4)	-0.0031 (2)	-0.0004 (2)	0.0019 (2)

Geometric parameters (Å, °)

C1—C5 ⁱ	1.365 (3)	C6—H6B	0.9700
C1—C2	1.407 (3)	C7—C8	1.507 (5)
C1—H1B	0.9300	C7—H7A	0.9700

C2—C3	1.366 (3)	C7—H7B	0.9700
C2—H2A	0.9300	C8—O4	1.489 (4)
C3—C4	1.432 (3)	C8—H8A	0.9700
C3—S1	1.784 (2)	C8—H8B	0.9700
C4—C5	1.426 (3)	N1—H1C	0.8900
C4—C4 ⁱ	1.428 (4)	N1—H1D	0.8900
C5—C1 ⁱ	1.365 (3)	N1—H1E	0.8900
C5—H5A	0.9300	O1—S1	1.450 (2)
C6—N1	1.418 (4)	O2—S1	1.446 (2)
C6—C7	1.502 (4)	O3—S1	1.445 (2)
C6—H6A	0.9700	O4—H4A	0.8200
C5 ⁱ —C1—C2	120.7 (2)	C8—C7—H7A	108.7
C5 ⁱ —C1—H1B	119.7	C6—C7—H7B	108.7
C2—C1—H1B	119.7	C8—C7—H7B	108.7
C3—C2—C1	120.3 (2)	H7A—C7—H7B	107.6
C3—C2—H2A	119.8	O4—C8—C7	112.3 (2)
C1—C2—H2A	119.8	O4—C8—H8A	109.1
C2—C3—C4	121.0 (2)	C7—C8—H8A	109.1
C2—C3—S1	117.15 (17)	O4—C8—H8B	109.1
C4—C3—S1	121.80 (16)	C7—C8—H8B	109.1
C5—C4—C4 ⁱ	118.9 (2)	H8A—C8—H8B	107.9
C5—C4—C3	122.9 (2)	C6—N1—H1C	109.5
C4 ⁱ —C4—C3	118.3 (2)	C6—N1—H1D	109.5
C1 ⁱ —C5—C4	120.8 (2)	H1C—N1—H1D	109.5
C1 ⁱ —C5—H5A	119.6	C6—N1—H1E	109.5
C4—C5—H5A	119.6	H1C—N1—H1E	109.5
N1—C6—C7	112.2 (2)	H1D—N1—H1E	109.5
N1—C6—H6A	109.2	C8—O4—H4A	109.5
C7—C6—H6A	109.2	O3—S1—O2	112.18 (15)
N1—C6—H6B	109.2	O3—S1—O1	111.71 (15)
C7—C6—H6B	109.2	O2—S1—O1	113.79 (16)
H6A—C6—H6B	107.9	O3—S1—C3	107.56 (12)
C6—C7—C8	114.2 (3)	O2—S1—C3	105.61 (12)
C6—C7—H7A	108.7	O1—S1—C3	105.37 (11)

Symmetry code: (i) $-x+1, -y, -z+1$.

Hydrogen-bond geometry (\AA , $^\circ$)

<i>D</i> —H \cdots <i>A</i>	<i>D</i> —H	H \cdots <i>A</i>	<i>D</i> \cdots <i>A</i>	<i>D</i> —H \cdots <i>A</i>
O4—H4A \cdots O1 ⁱⁱ	0.82	1.95	2.772 (3)	177
N1—H1D \cdots O3 ⁱⁱⁱ	0.89	1.93	2.768 (3)	157
N1—H1C \cdots O4 ^{iv}	0.89	2.07	2.854 (3)	147

Symmetry codes: (ii) $x-1, y, z$; (iii) $-x+1, y-1/2, -z+3/2$; (iv) $x, -y+1/2, z+1/2$.