

Acta Crystallographica Section E

## Structure Reports

Online

ISSN 1600-5368

## [2-(4-Chlorophenyl)-5-phenyloxolan-3-yl](cyclopentenyl)methanone

 Jae Kyun Lee,<sup>a</sup> Satish N. Chavre,<sup>a</sup> Yong Seo Cho,<sup>a</sup> Yeonhee Lee<sup>b</sup> and Joo Hwan Cha<sup>b\*</sup>
<sup>a</sup>Center for Neuro-Medicine, Korea Institute of Science & Technology, Hwarangro 14-gil, Seongbuk-gu, Seoul 136-791, Republic of Korea, and <sup>b</sup>Advanced Analysis Center, Korea Institute of Science & Technology, Hwarangro 14-gil, Seongbuk-gu, Seoul 136-791, Republic of Korea

Correspondence e-mail: jhcha@kist.re.kr

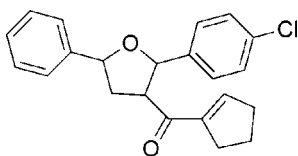
Received 23 November 2011; accepted 2 December 2011

 Key indicators: single-crystal X-ray study;  $T = 296$  K; mean  $\sigma(\text{C}-\text{C}) = 0.004$  Å;  $R$  factor = 0.051;  $wR$  factor = 0.139; data-to-parameter ratio = 14.6.

In the title compound,  $\text{C}_{22}\text{H}_{21}\text{ClO}_2$ , the oxolane ring adopts a twisted conformation. The dihedral angles between the mean plane of the oxolane ring and the mean planes of the 4-chlorophenyl, phenyl and cyclopentenyl rings are 71.81 (18), 76.9 (18) and 82.08 (18)°, respectively.

## Related literature

For general background to the Prins-type cyclization for the synthesis of oxolanes, see: Chavre *et al.* (2006, 2008); Cohen *et al.* (2001); Shin *et al.* (2005).



## Experimental

## Crystal data

 $\text{C}_{22}\text{H}_{21}\text{ClO}_2$   
 $M_r = 352.86$ 

 Monoclinic,  $P2_1/n$   
 $a = 5.7575$  (6) Å

 $b = 11.3547$  (12) Å  
 $c = 28.554$  (3) Å  
 $\beta = 94.442$  (8)°  
 $V = 1861.1$  (4) Å<sup>3</sup>  
 $Z = 4$ 

 Cu  $K\alpha$  radiation  
 $\mu = 1.90$  mm<sup>-1</sup>  
 $T = 296$  K  
 $0.50 \times 0.20 \times 0.20$  mm

## Data collection

 Rigaku R-Axis RAPID diffractometer  
 Absorption correction: multi-scan (ABSCOR; Rigaku, 1995)  
 $T_{\min} = 0.301$ ,  $T_{\max} = 0.684$ 

 18544 measured reflections  
 3363 independent reflections  
 2012 reflections with  $F^2 > 2\sigma(F^2)$   
 $R_{\text{int}} = 0.073$ 

## Refinement

 $R[F^2 > 2\sigma(F^2)] = 0.051$   
 $wR(F^2) = 0.139$   
 $S = 1.05$   
 3363 reflections  
 230 parameters

 H atoms treated by a mixture of independent and constrained refinement  
 $\Delta\rho_{\text{max}} = 0.20$  e Å<sup>-3</sup>  
 $\Delta\rho_{\text{min}} = -0.19$  e Å<sup>-3</sup>

Data collection: *RAPID-AUTO* (Rigaku, 2006); cell refinement: *RAPID-AUTO*; data reduction: *RAPID-AUTO*; program(s) used to solve structure: *SIR2008* in *Il Milione* (Burla *et al.*, 2007); program(s) used to refine structure: *SHELXL97* (Sheldrick, 2008); molecular graphics: *CrystalStructure* (Rigaku, 2010); software used to prepare material for publication: *CrystalStructure*.

Financial support from the Korea Institute of Science and Technology (KIST) is gratefully acknowledged.

Supplementary data and figures for this paper are available from the IUCr electronic archives (Reference: GO2037).

## References

- Burla, M. C., Caliandro, R., Camalli, M., Carrozzini, B., Cascarano, G. L., De Caro, L., Giacovazzo, C., Polidori, G., Siliqi, D. & Spagna, R. (2007). *J. Appl. Cryst.* **40**, 609–613.
- Chavre, S. N., Choo, H., Cha, J. H., Pae, A. N., Choi, K. I. & Cho, Y. S. (2006). *Org. Lett.* **8**, 3617–3619.
- Chavre, S. N., Choo, H., Lee, J. K., Pae, A. N., Kim, Y. & Cho, Y. S. (2008). *J. Org. Chem.* **73**, 7467–7471.
- Cohen, F., MacMillan, D. W., Overman, L. E. & Romero, A. (2001). *Org. Lett.* **3**, 1225–1228.
- Rigaku (1995). *ABSCOR*. Rigaku Corporation, Tokyo, Japan.
- Rigaku (2006). *RAPID-AUTO*. Rigaku Corporation, Tokyo, Japan.
- Rigaku (2010). *CrystalStructure*. Rigaku Corporation, Tokyo, Japan.
- Sheldrick, G. M. (2008). *Acta Cryst.* **A64**, 112–122.
- Shin, C., Chavre, S. N., Pae, A. N., Cha, J. H., Koh, H. Y., Chang, M. H., Choi, J. H. & Cho, Y. S. (2005). *Org. Lett.* **7**, 3283–3285.

## supporting information

*Acta Cryst.* (2012). E68, o45 [doi:10.1107/S1600536811051993]

**[2-(4-Chlorophenyl)-5-phenyloxolan-3-yl](cyclopentenyl)methanone**

Jae Kyun Lee, Satish N. Chavre, Yong Seo Cho, Yeonhee Lee and Joo Hwan Cha

**S1. Comment**

The oxolane moiety is an important heterocycle constituent in many bioactive natural products. New synthetic methodologies for 2,5-disubstituted oxolanes having an allenyl group, *via* Prins-type cyclization, has been subject of development since last decade (Shin *et al.*, 2005). Cohen and colleagues synthesized the polysubstituted oxolane by Prins-Pinacol reaction (Cohen *et al.*, 2001). 5-Exocyclic products, 2,3,5-trisubstituted oxolanes, were synthesized from homopropargylic alcohols with alkynes and aldehydes (Chavre *et al.*, 2006, 2008).

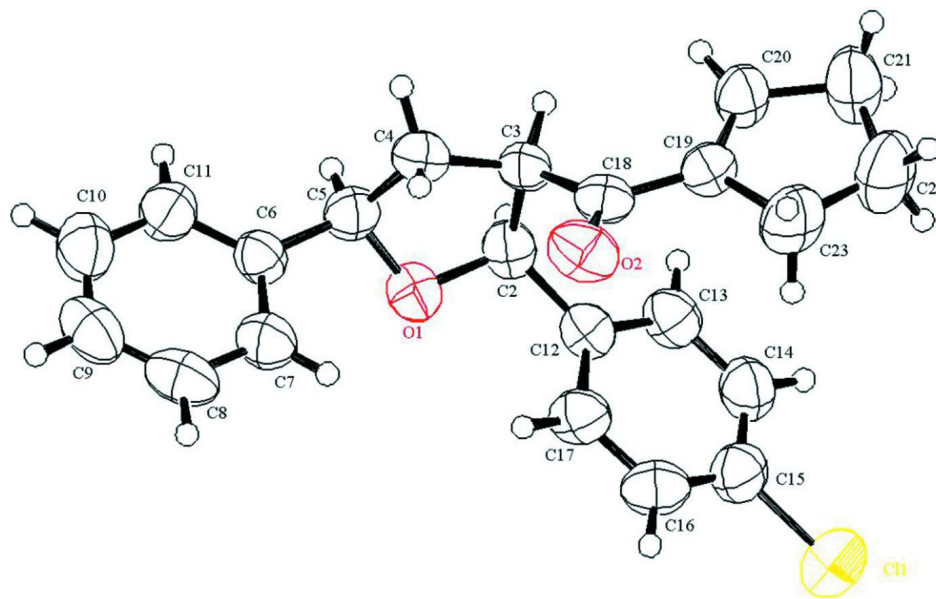
In the molecule of Fig. 1, the oxolane ring adopts a twisted conformation on C5–O1. The dihedral angle between the chlorophenyl and cyclopentenyl rings is 31.03 (17)°.

**S2. Experimental**

To a stirred solution of 1-(4-hydroxy-4-phenylbut-1-ynyl)cyclopentanol (0.31 mmol) and 4-Chlorobenzaldehyde (0.37 mmol) in dry diethyl ether (3.0 ml) was added slowly TMSOTf (0.93 mmol) for 10 min and stirred for 1 h at -78°C. The mixture was allowed to warm to room temperature slowly for 3 h. The mixture was stirred at room temperature for additional 1–2 h until the completion of reaction. The reaction mixture was quenched with saturated aqueous NaHCO<sub>3</sub> and diluted with 10 ml of diethyl ether. The organic solution was washed with water and brine, and the organic layer was dried over MgSO<sub>4</sub>, filtered, concentrated and purification by silica gel column chromatography to afford the title compound (54%) as a yellow crystal.

**S3. Refinement**

All hydrogen atoms were positioned geometrically and refined using a riding model with C—H = 0.93–0.98 Å and  $U_{iso}(H) = 1.2$  or  $1.5 U_{eq}(C)$ . Rotating group model was applied for the methyl groups.

**Figure 1**

The structure of the title compound, with displacement ellipsoids drawn at the 50% probability level and H atoms with arbitrary radius.

### [2-(4-Chlorophenyl)-5-phenyloxolan-3-yl](cyclopentenyl)methanone

#### Crystal data

$C_{22}H_{21}ClO_2$

$M_r = 352.86$

Monoclinic,  $P2_1/n$

Hall symbol:  $-P\ 2_1n$

$a = 5.7575$  (6) Å

$b = 11.3547$  (12) Å

$c = 28.554$  (3) Å

$\beta = 94.442$  (8)°

$V = 1861.1$  (4) Å<sup>3</sup>

$Z = 4$

$F(000) = 744.00$

$D_x = 1.259$  Mg m<sup>-3</sup>

Cu  $K\alpha$  radiation,  $\lambda = 1.54187$  Å

Cell parameters from 12997 reflections

$\theta = 3.1$ – $68.3$ °

$\mu = 1.90$  mm<sup>-1</sup>

$T = 296$  K

Needle, yellow

$0.50 \times 0.20 \times 0.20$  mm

#### Data collection

Rigaku R-AXIS RAPID  
diffractometer

Detector resolution: 10.000 pixels mm<sup>-1</sup>

$\omega$  scans

Absorption correction: multi-scan

(*ABSCOR*; Rigaku, 1995)

$T_{\min} = 0.301$ ,  $T_{\max} = 0.684$

18544 measured reflections

3363 independent reflections

2012 reflections with  $F^2 > 2\sigma(F^2)$

$R_{\text{int}} = 0.073$

$\theta_{\text{max}} = 68.2$ °

$h = -6 \rightarrow 6$

$k = -13 \rightarrow 13$

$l = -34 \rightarrow 34$

#### Refinement

Refinement on  $F^2$

$R[F^2 > 2\sigma(F^2)] = 0.051$

$wR(F^2) = 0.139$

$S = 1.05$

3363 reflections

230 parameters

0 restraints

Primary atom site location: structure-invariant  
direct methods

Secondary atom site location: difference Fourier map  
 Hydrogen site location: inferred from neighbouring sites  
 H atoms treated by a mixture of independent and constrained refinement

$$w = 1/[\sigma^2(F_o^2) + (0.0568P)^2 + 0.1808P]$$

where  $P = (F_o^2 + 2F_c^2)/3$   
 $(\Delta/\sigma)_{\max} = 0.001$   
 $\Delta\rho_{\max} = 0.20 \text{ e } \text{\AA}^{-3}$   
 $\Delta\rho_{\min} = -0.19 \text{ e } \text{\AA}^{-3}$

*Special details*

**Geometry.** All e.s.d.'s (except the e.s.d. in the dihedral angle between two l.s. planes) are estimated using the full covariance matrix. The cell e.s.d.'s are taken into account individually in the estimation of e.s.d.'s in distances, angles and torsion angles; correlations between e.s.d.'s in cell parameters are only used when they are defined by crystal symmetry. An approximate (isotropic) treatment of cell e.s.d.'s is used for estimating e.s.d.'s involving l.s. planes.

**Refinement.** Refinement was performed using all reflections. The weighted *R*-factor (*wR*) and goodness of fit (*S*) are based on *F*<sup>2</sup>. *R*-factor (gt) are based on *F*. The threshold expression of *F*<sup>2</sup> > 2.0  $\sigma(F^2)$  is used only for calculating *R*-factor (gt).

*Fractional atomic coordinates and isotropic or equivalent isotropic displacement parameters (Å<sup>2</sup>)*

	<i>x</i>	<i>y</i>	<i>z</i>	<i>U</i> <sub>iso</sub> */ <i>U</i> <sub>eq</sub>
Cl(1)	0.34139 (17)	0.11812 (7)	0.53247 (3)	0.1065 (4)
O(1)	0.2994 (3)	0.37307 (13)	0.74183 (5)	0.0597 (5)
O(2)	0.6450 (3)	0.53421 (16)	0.66245 (6)	0.0763 (6)
C(2)	0.1844 (5)	0.4198 (2)	0.70022 (8)	0.0574 (7)
C(3)	0.2806 (5)	0.5488 (2)	0.69627 (8)	0.0561 (7)
C(4)	0.4071 (5)	0.5703 (3)	0.74448 (8)	0.0700 (8)
C(5)	0.3328 (5)	0.4685 (3)	0.77457 (8)	0.0602 (7)
C(6)	0.5050 (5)	0.4344 (2)	0.81393 (8)	0.0541 (6)
C(7)	0.7050 (5)	0.3738 (3)	0.80578 (10)	0.0682 (8)
C(8)	0.8695 (5)	0.3488 (3)	0.84223 (12)	0.0802 (9)
C(9)	0.8361 (6)	0.3839 (3)	0.88696 (11)	0.0805 (9)
C(10)	0.6385 (6)	0.4435 (3)	0.89575 (9)	0.0795 (9)
C(11)	0.4730 (5)	0.4682 (3)	0.85944 (9)	0.0668 (7)
C(12)	0.2209 (5)	0.3392 (2)	0.65941 (8)	0.0526 (6)
C(13)	0.0550 (5)	0.3341 (3)	0.62177 (9)	0.0628 (7)
C(14)	0.0916 (5)	0.2667 (3)	0.58285 (9)	0.0713 (8)
C(15)	0.2948 (6)	0.2045 (3)	0.58140 (9)	0.0680 (8)
C(16)	0.4618 (5)	0.2066 (3)	0.61850 (10)	0.0697 (8)
C(17)	0.4230 (5)	0.2737 (2)	0.65745 (9)	0.0632 (7)
C(18)	0.4382 (5)	0.5586 (2)	0.65654 (8)	0.0549 (6)
C(19)	0.3382 (5)	0.5935 (2)	0.60977 (8)	0.0523 (6)
C(20)	0.1393 (5)	0.6481 (3)	0.59902 (9)	0.0667 (8)
C(21)	0.1054 (6)	0.6755 (3)	0.54765 (9)	0.0881 (10)
C(22)	0.3045 (6)	0.6163 (4)	0.52732 (10)	0.0999 (11)
C(23)	0.4688 (5)	0.5744 (3)	0.56742 (9)	0.0829 (9)
H(2)	0.0171	0.4240	0.7043	0.0689*
H(3)	0.1505	0.6041	0.6912	0.0673*
H(4A)	0.5746	0.5702	0.7426	0.0840*
H(4B)	0.3612	0.6451	0.7573	0.0840*
H(5)	0.1839	0.4877	0.7872	0.0723*
H(7)	0.7295	0.3495	0.7755	0.0818*

H(8)	1.0039	0.3077	0.8363	0.0963*
H(9)	0.9478	0.3673	0.9113	0.0966*
H(10)	0.6151	0.4674	0.9262	0.0954*
H(11)	0.3380	0.5083	0.8657	0.0802*
H(13)	-0.0827	0.3765	0.6227	0.0753*
H(14)	-0.0211	0.2635	0.5577	0.0855*
H(16)	0.5987	0.1636	0.6174	0.0836*
H(17)	0.5345	0.2749	0.6828	0.0758*
H(21A)	-0.0419	0.6444	0.5342	0.1057*
H(21B)	0.1090	0.7598	0.5423	0.1057*
H(22A)	0.3833	0.6710	0.5078	0.1199*
H(22B)	0.2495	0.5501	0.5081	0.1199*
H(23A)	0.5063	0.4918	0.5638	0.0994*
H(23B)	0.6120	0.6198	0.5694	0.0994*
H(20)	0.033 (5)	0.672 (3)	0.6215 (9)	0.086 (9)*

*Atomic displacement parameters (Å<sup>2</sup>)*

	$U^{11}$	$U^{22}$	$U^{33}$	$U^{12}$	$U^{13}$	$U^{23}$
Cl(1)	0.1507 (9)	0.0956 (7)	0.0744 (5)	0.0158 (6)	0.0156 (5)	-0.0156 (4)
O(1)	0.0594 (12)	0.0608 (11)	0.0580 (10)	-0.0031 (9)	-0.0002 (8)	0.0051 (8)
O(2)	0.0438 (12)	0.0850 (14)	0.1001 (14)	0.0143 (10)	0.0048 (10)	0.0100 (11)
C(2)	0.0435 (15)	0.0749 (17)	0.0541 (14)	0.0051 (13)	0.0051 (12)	0.0053 (12)
C(3)	0.0554 (16)	0.0592 (15)	0.0541 (14)	0.0195 (13)	0.0067 (12)	0.0033 (11)
C(4)	0.091 (2)	0.0526 (15)	0.0655 (16)	0.0113 (15)	-0.0014 (15)	-0.0010 (12)
C(5)	0.0540 (17)	0.0693 (17)	0.0580 (15)	0.0132 (13)	0.0085 (13)	-0.0031 (13)
C(6)	0.0498 (16)	0.0577 (14)	0.0546 (14)	0.0049 (12)	0.0032 (12)	0.0053 (11)
C(7)	0.0614 (19)	0.0715 (18)	0.0712 (17)	0.0147 (15)	0.0019 (14)	0.0040 (14)
C(8)	0.063 (2)	0.0660 (18)	0.109 (3)	0.0128 (15)	-0.0068 (18)	0.0108 (17)
C(9)	0.080 (3)	0.071 (2)	0.086 (3)	-0.0072 (17)	-0.0249 (18)	0.0174 (16)
C(10)	0.091 (3)	0.083 (2)	0.0624 (17)	-0.0093 (19)	-0.0075 (17)	-0.0003 (15)
C(11)	0.0663 (19)	0.0701 (17)	0.0639 (17)	0.0031 (14)	0.0038 (14)	-0.0034 (13)
C(12)	0.0423 (15)	0.0572 (14)	0.0580 (15)	-0.0024 (12)	0.0021 (12)	0.0057 (11)
C(13)	0.0521 (17)	0.0688 (17)	0.0670 (16)	0.0033 (14)	0.0018 (14)	0.0059 (13)
C(14)	0.077 (3)	0.0753 (19)	0.0592 (16)	0.0003 (16)	-0.0070 (15)	0.0029 (14)
C(15)	0.081 (3)	0.0638 (17)	0.0604 (16)	-0.0040 (16)	0.0129 (16)	0.0014 (13)
C(16)	0.0560 (18)	0.0653 (17)	0.089 (2)	0.0075 (14)	0.0120 (16)	-0.0044 (15)
C(17)	0.0489 (17)	0.0655 (16)	0.0741 (17)	0.0055 (13)	-0.0023 (13)	-0.0065 (13)
C(18)	0.0468 (16)	0.0497 (14)	0.0682 (16)	0.0050 (12)	0.0050 (13)	0.0004 (12)
C(19)	0.0449 (16)	0.0562 (14)	0.0567 (14)	-0.0011 (12)	0.0094 (12)	-0.0019 (11)
C(20)	0.0558 (18)	0.090 (2)	0.0554 (16)	0.0107 (16)	0.0102 (14)	0.0036 (14)
C(21)	0.073 (2)	0.132 (3)	0.0592 (17)	0.015 (2)	0.0067 (15)	0.0116 (17)
C(22)	0.093 (3)	0.146 (4)	0.0635 (19)	0.006 (3)	0.0223 (19)	-0.0039 (18)
C(23)	0.069 (2)	0.107 (3)	0.0762 (19)	0.0100 (18)	0.0269 (17)	-0.0053 (17)

## Geometric parameters (Å, °)

Cl(1)—C(15)	1.745 (3)	C(20)—C(21)	1.497 (4)
O(1)—C(2)	1.418 (3)	C(21)—C(22)	1.485 (5)
O(1)—C(5)	1.434 (3)	C(22)—C(23)	1.505 (4)
O(2)—C(18)	1.221 (3)	C(2)—H(2)	0.980
C(2)—C(3)	1.573 (4)	C(3)—H(3)	0.980
C(2)—C(12)	1.509 (4)	C(4)—H(4A)	0.970
C(3)—C(4)	1.526 (4)	C(4)—H(4B)	0.970
C(3)—C(18)	1.511 (4)	C(5)—H(5)	0.980
C(4)—C(5)	1.521 (4)	C(7)—H(7)	0.930
C(5)—C(6)	1.491 (4)	C(8)—H(8)	0.930
C(6)—C(7)	1.376 (4)	C(9)—H(9)	0.930
C(6)—C(11)	1.381 (4)	C(10)—H(10)	0.930
C(7)—C(8)	1.382 (4)	C(11)—H(11)	0.930
C(8)—C(9)	1.366 (5)	C(13)—H(13)	0.930
C(9)—C(10)	1.363 (5)	C(14)—H(14)	0.930
C(10)—C(11)	1.382 (4)	C(16)—H(16)	0.930
C(12)—C(13)	1.382 (4)	C(17)—H(17)	0.930
C(12)—C(17)	1.386 (4)	C(20)—H(20)	0.96 (3)
C(13)—C(14)	1.379 (4)	C(21)—H(21A)	0.970
C(14)—C(15)	1.370 (5)	C(21)—H(21B)	0.970
C(15)—C(16)	1.375 (4)	C(22)—H(22A)	0.970
C(16)—C(17)	1.380 (4)	C(22)—H(22B)	0.970
C(18)—C(19)	1.467 (4)	C(23)—H(23A)	0.970
C(19)—C(20)	1.318 (4)	C(23)—H(23B)	0.970
C(19)—C(23)	1.488 (4)		
O(2)···C(2) <sup>i</sup>	3.460 (3)	H(8)···H(4A) <sup>iv</sup>	3.5198
O(2)···C(8) <sup>ii</sup>	3.575 (4)	H(8)···H(4B) <sup>iv</sup>	3.3875
O(2)···C(13) <sup>i</sup>	3.537 (4)	H(8)···H(5) <sup>i</sup>	2.7276
C(2)···O(2) <sup>iii</sup>	3.460 (3)	H(8)···H(11) <sup>i</sup>	3.0564
C(8)···O(2) <sup>iv</sup>	3.575 (4)	H(8)···H(23B) <sup>iv</sup>	3.5412
C(8)···C(18) <sup>iv</sup>	3.475 (4)	H(8)···H(20) <sup>iv</sup>	3.2315
C(8)···C(19) <sup>iv</sup>	3.572 (4)	H(9)···Cl(1) <sup>ii</sup>	3.4433
C(11)···C(15) <sup>v</sup>	3.582 (4)	H(9)···Cl(1) <sup>x</sup>	3.5629
C(13)···O(2) <sup>iii</sup>	3.537 (4)	H(9)···C(19) <sup>iv</sup>	3.4151
C(15)···C(11) <sup>vi</sup>	3.582 (4)	H(9)···C(20) <sup>iv</sup>	3.4699
C(18)···C(8) <sup>ii</sup>	3.475 (4)	H(9)···C(21) <sup>iv</sup>	3.5022
C(19)···C(8) <sup>ii</sup>	3.572 (4)	H(9)···C(22) <sup>iv</sup>	3.5828
Cl(1)···H(9) <sup>iv</sup>	3.4433	H(9)···C(23) <sup>iv</sup>	3.4077
Cl(1)···H(9) <sup>vii</sup>	3.5629	H(9)···H(11) <sup>i</sup>	3.1235
Cl(1)···H(10) <sup>vi</sup>	3.4222	H(9)···H(16) <sup>ii</sup>	3.4677
Cl(1)···H(10) <sup>vii</sup>	3.3528	H(9)···H(21B) <sup>iv</sup>	3.0383
Cl(1)···H(11) <sup>vi</sup>	3.3964	H(9)···H(22A) <sup>iv</sup>	3.3010
Cl(1)···H(21B) <sup>viii</sup>	3.5133	H(9)···H(23B) <sup>iv</sup>	2.8899
Cl(1)···H(22A) <sup>ix</sup>	3.1389	H(10)···Cl(1) <sup>v</sup>	3.4222
O(1)···H(4B) <sup>vi</sup>	2.7496	H(10)···Cl(1) <sup>x</sup>	3.3528

O(1)···H(7) <sup>iii</sup>	3.4997	H(10)···C(15) <sup>v</sup>	3.5757
O(1)···H(8) <sup>iii</sup>	3.3806	H(10)···H(14) <sup>v</sup>	3.4412
O(2)···H(2) <sup>i</sup>	2.6806	H(10)···H(16) <sup>ii</sup>	3.0881
O(2)···H(3) <sup>i</sup>	3.0662	H(10)···H(21B) <sup>vi</sup>	2.8666
O(2)···H(8) <sup>ii</sup>	3.2230	H(11)···Cl(1) <sup>v</sup>	3.3964
O(2)···H(13) <sup>i</sup>	2.6883	H(11)···C(8) <sup>iii</sup>	3.2748
O(2)···H(20) <sup>i</sup>	3.03 (3)	H(11)···C(9) <sup>iii</sup>	3.3137
C(2)···H(4B) <sup>vi</sup>	3.3645	H(11)···C(14) <sup>v</sup>	3.2922
C(3)···H(8) <sup>ii</sup>	3.3504	H(11)···C(15) <sup>v</sup>	2.8298
C(5)···H(8) <sup>iii</sup>	3.2463	H(11)···C(16) <sup>v</sup>	2.8939
C(6)···H(8) <sup>iii</sup>	3.3292	H(11)···C(17) <sup>v</sup>	3.4096
C(6)···H(20) <sup>vi</sup>	3.52 (3)	H(11)···H(8) <sup>iii</sup>	3.0564
C(7)···H(2) <sup>i</sup>	3.5722	H(11)···H(9) <sup>iii</sup>	3.1235
C(7)···H(5) <sup>i</sup>	3.1280	H(11)···H(16) <sup>v</sup>	3.1385
C(7)···H(20) <sup>vi</sup>	3.44 (3)	H(13)···O(2) <sup>iii</sup>	2.6883
C(8)···H(5) <sup>i</sup>	2.9455	H(13)···C(16) <sup>iii</sup>	3.2505
C(8)···H(11) <sup>i</sup>	3.2748	H(13)···C(17) <sup>iii</sup>	3.2991
C(8)···H(20) <sup>vi</sup>	3.29 (3)	H(13)···H(16) <sup>iii</sup>	3.0320
C(9)···H(11) <sup>i</sup>	3.3137	H(13)···H(17) <sup>iii</sup>	3.1180
C(9)···H(16) <sup>ii</sup>	3.2006	H(13)···H(23A) <sup>iii</sup>	3.0864
C(9)···H(23B) <sup>iv</sup>	3.2533	H(13)···H(23B) <sup>iii</sup>	3.5534
C(9)···H(20) <sup>vi</sup>	3.20 (3)	H(14)···C(21) <sup>viii</sup>	3.0892
C(10)···H(16) <sup>ii</sup>	2.9601	H(14)···C(22) <sup>viii</sup>	3.1317
C(10)···H(21B) <sup>vi</sup>	3.1472	H(14)···H(10) <sup>vi</sup>	3.4412
C(10)···H(20) <sup>vi</sup>	3.26 (3)	H(14)···H(16) <sup>iii</sup>	3.0912
C(11)···H(8) <sup>iii</sup>	3.2826	H(14)···H(21A) <sup>viii</sup>	2.8734
C(11)···H(16) <sup>ii</sup>	3.3447	H(14)···H(21B) <sup>viii</sup>	2.8730
C(11)···H(20) <sup>vi</sup>	3.41 (3)	H(14)···H(22A) <sup>viii</sup>	2.7927
C(12)···H(4B) <sup>vi</sup>	3.3030	H(14)···H(22B) <sup>viii</sup>	3.0585
C(13)···H(16) <sup>iii</sup>	3.2583	H(16)···C(9) <sup>iv</sup>	3.2006
C(14)···H(11) <sup>vi</sup>	3.2922	H(16)···C(10) <sup>iv</sup>	2.9601
C(14)···H(16) <sup>iii</sup>	3.2907	H(16)···C(11) <sup>iv</sup>	3.3447
C(14)···H(21A) <sup>viii</sup>	3.4806	H(16)···C(13) <sup>i</sup>	3.2583
C(15)···H(10) <sup>vi</sup>	3.5757	H(16)···C(14) <sup>i</sup>	3.2907
C(15)···H(11) <sup>vi</sup>	2.8298	H(16)···H(9) <sup>iv</sup>	3.4677
C(15)···H(22A) <sup>ix</sup>	3.5571	H(16)···H(10) <sup>iv</sup>	3.0881
C(16)···H(11) <sup>vi</sup>	2.8939	H(16)···H(11) <sup>vi</sup>	3.1385
C(16)···H(13) <sup>i</sup>	3.2505	H(16)···H(13) <sup>i</sup>	3.0320
C(17)···H(4B) <sup>vi</sup>	3.3692	H(16)···H(14) <sup>i</sup>	3.0912
C(17)···H(11) <sup>vi</sup>	3.4096	H(17)···H(2) <sup>i</sup>	3.2711
C(17)···H(13) <sup>i</sup>	3.2991	H(17)···H(4B) <sup>vi</sup>	3.2998
C(18)···H(8) <sup>ii</sup>	2.8538	H(17)···H(13) <sup>i</sup>	3.1180
C(19)···H(8) <sup>ii</sup>	2.9837	H(21A)···C(14) <sup>viii</sup>	3.4806
C(19)···H(9) <sup>ii</sup>	3.4151	H(21A)···C(23) <sup>iii</sup>	3.1440
C(20)···H(8) <sup>ii</sup>	3.2142	H(21A)···H(14) <sup>viii</sup>	2.8734
C(20)···H(9) <sup>ii</sup>	3.4699	H(21A)···H(22A) <sup>iii</sup>	3.3502
C(20)···H(23B) <sup>iii</sup>	3.1048	H(21A)···H(22B) <sup>viii</sup>	2.7457
C(21)···H(9) <sup>ii</sup>	3.5022	H(21A)···H(23A) <sup>iii</sup>	3.2912

C(21)···H(14) <sup>viii</sup>	3.0892	H(21A)···H(23B) <sup>iii</sup>	2.3173
C(21)···H(22B) <sup>viii</sup>	3.5726	H(21B)···Cl(1) <sup>viii</sup>	3.5133
C(21)···H(23B) <sup>iii</sup>	3.0209	H(21B)···C(10) <sup>v</sup>	3.1472
C(22)···H(9) <sup>ii</sup>	3.5828	H(21B)···H(9) <sup>ii</sup>	3.0383
C(22)···H(14) <sup>viii</sup>	3.1317	H(21B)···H(10) <sup>v</sup>	2.8666
C(22)···H(22B) <sup>ix</sup>	3.4041	H(21B)···H(14) <sup>viii</sup>	2.8730
C(22)···H(23A) <sup>ix</sup>	3.1476	H(21B)···H(23B) <sup>iii</sup>	3.4145
C(23)···H(9) <sup>ii</sup>	3.4077	H(22A)···Cl(1) <sup>ix</sup>	3.1389
C(23)···H(21A) <sup>i</sup>	3.1440	H(22A)···C(15) <sup>ix</sup>	3.5571
C(23)···H(22B) <sup>ix</sup>	3.1328	H(22A)···H(9) <sup>ii</sup>	3.3010
H(2)···O(2) <sup>iii</sup>	2.6806	H(22A)···H(14) <sup>viii</sup>	2.7927
H(2)···C(7) <sup>iii</sup>	3.5722	H(22A)···H(21A) <sup>i</sup>	3.3502
H(2)···H(4A) <sup>iii</sup>	3.2970	H(22A)···H(22B) <sup>ix</sup>	3.3354
H(2)···H(4B) <sup>vi</sup>	3.4065	H(22A)···H(23A) <sup>ix</sup>	2.8646
H(2)···H(7) <sup>iii</sup>	2.8478	H(22B)···C(21) <sup>viii</sup>	3.5726
H(2)···H(17) <sup>iii</sup>	3.2711	H(22B)···C(22) <sup>ix</sup>	3.4041
H(3)···O(2) <sup>iii</sup>	3.0662	H(22B)···C(23) <sup>ix</sup>	3.1328
H(3)···H(8) <sup>ii</sup>	3.1877	H(22B)···H(14) <sup>viii</sup>	3.0585
H(4A)···H(2) <sup>i</sup>	3.2970	H(22B)···H(21A) <sup>viii</sup>	2.7457
H(4A)···H(7) <sup>ii</sup>	3.4183	H(22B)···H(22A) <sup>ix</sup>	3.3354
H(4A)···H(8) <sup>ii</sup>	3.5198	H(22B)···H(22B) <sup>viii</sup>	3.0914
H(4B)···O(1) <sup>v</sup>	2.7496	H(22B)···H(22B) <sup>ix</sup>	3.1672
H(4B)···C(2) <sup>v</sup>	3.3645	H(22B)···H(23A) <sup>ix</sup>	2.6197
H(4B)···C(12) <sup>v</sup>	3.3030	H(22B)···H(23B) <sup>ix</sup>	3.0847
H(4B)···C(17) <sup>v</sup>	3.3692	H(23A)···C(22) <sup>ix</sup>	3.1476
H(4B)···H(2) <sup>v</sup>	3.4065	H(23A)···H(13) <sup>i</sup>	3.0864
H(4B)···H(7) <sup>ii</sup>	3.4863	H(23A)···H(21A) <sup>i</sup>	3.2912
H(4B)···H(8) <sup>ii</sup>	3.3875	H(23A)···H(22A) <sup>ix</sup>	2.8646
H(4B)···H(17) <sup>v</sup>	3.2998	H(23A)···H(22B) <sup>ix</sup>	2.6197
H(5)···C(7) <sup>iii</sup>	3.1280	H(23B)···C(9) <sup>ii</sup>	3.2533
H(5)···C(8) <sup>iii</sup>	2.9455	H(23B)···C(20) <sup>i</sup>	3.1048
H(5)···H(7) <sup>iii</sup>	3.0467	H(23B)···C(21) <sup>i</sup>	3.0209
H(5)···H(8) <sup>iii</sup>	2.7276	H(23B)···H(8) <sup>ii</sup>	3.5412
H(7)···O(1) <sup>i</sup>	3.4997	H(23B)···H(9) <sup>ii</sup>	2.8899
H(7)···H(2) <sup>i</sup>	2.8478	H(23B)···H(13) <sup>i</sup>	3.5534
H(7)···H(4A) <sup>iv</sup>	3.4183	H(23B)···H(21A) <sup>i</sup>	2.3173
H(7)···H(4B) <sup>iv</sup>	3.4863	H(23B)···H(21B) <sup>i</sup>	3.4145
H(7)···H(5) <sup>i</sup>	3.0467	H(23B)···H(22B) <sup>ix</sup>	3.0847
H(8)···O(1) <sup>i</sup>	3.3806	H(23B)···H(20) <sup>i</sup>	2.8072
H(8)···O(2) <sup>iv</sup>	3.2230	H(20)···O(2) <sup>iii</sup>	3.03 (3)
H(8)···C(3) <sup>iv</sup>	3.3504	H(20)···C(6) <sup>v</sup>	3.52 (3)
H(8)···C(5) <sup>i</sup>	3.2463	H(20)···C(7) <sup>v</sup>	3.44 (3)
H(8)···C(6) <sup>i</sup>	3.3292	H(20)···C(8) <sup>v</sup>	3.29 (3)
H(8)···C(11) <sup>i</sup>	3.2826	H(20)···C(9) <sup>v</sup>	3.20 (3)
H(8)···C(18) <sup>iv</sup>	2.8538	H(20)···C(10) <sup>v</sup>	3.26 (3)
H(8)···C(19) <sup>iv</sup>	2.9837	H(20)···C(11) <sup>v</sup>	3.41 (3)
H(8)···C(20) <sup>iv</sup>	3.2142	H(20)···H(8) <sup>ii</sup>	3.2315
H(8)···H(3) <sup>iv</sup>	3.1877	H(20)···H(23B) <sup>iii</sup>	2.8072



C(2)—O(1)—C(5)	107.08 (17)	C(18)—C(3)—H(3)	109.756
O(1)—C(2)—C(3)	105.33 (18)	C(3)—C(4)—H(4A)	110.822
O(1)—C(2)—C(12)	109.62 (19)	C(3)—C(4)—H(4B)	110.830
C(3)—C(2)—C(12)	116.0 (2)	C(5)—C(4)—H(4A)	110.820
C(2)—C(3)—C(4)	103.30 (19)	C(5)—C(4)—H(4B)	110.820
C(2)—C(3)—C(18)	110.98 (19)	H(4A)—C(4)—H(4B)	108.881
C(4)—C(3)—C(18)	113.2 (2)	O(1)—C(5)—H(5)	109.307
C(3)—C(4)—C(5)	104.6 (2)	C(4)—C(5)—H(5)	109.305
O(1)—C(5)—C(4)	103.60 (18)	C(6)—C(5)—H(5)	109.316
O(1)—C(5)—C(6)	110.1 (2)	C(6)—C(7)—H(7)	119.692
C(4)—C(5)—C(6)	115.0 (2)	C(8)—C(7)—H(7)	119.701
C(5)—C(6)—C(7)	121.2 (3)	C(7)—C(8)—H(8)	119.783
C(5)—C(6)—C(11)	120.5 (3)	C(9)—C(8)—H(8)	119.795
C(7)—C(6)—C(11)	118.2 (3)	C(8)—C(9)—H(9)	120.091
C(6)—C(7)—C(8)	120.6 (3)	C(10)—C(9)—H(9)	120.106
C(7)—C(8)—C(9)	120.4 (3)	C(9)—C(10)—H(10)	120.016
C(8)—C(9)—C(10)	119.8 (3)	C(11)—C(10)—H(10)	120.013
C(9)—C(10)—C(11)	120.0 (3)	C(6)—C(11)—H(11)	119.505
C(6)—C(11)—C(10)	121.0 (3)	C(10)—C(11)—H(11)	119.501
C(2)—C(12)—C(13)	119.8 (3)	C(12)—C(13)—H(13)	119.632
C(2)—C(12)—C(17)	121.6 (2)	C(14)—C(13)—H(13)	119.645
C(13)—C(12)—C(17)	118.5 (3)	C(13)—C(14)—H(14)	120.183
C(12)—C(13)—C(14)	120.7 (3)	C(15)—C(14)—H(14)	120.201
C(13)—C(14)—C(15)	119.6 (3)	C(15)—C(16)—H(16)	120.539
Cl(1)—C(15)—C(14)	119.9 (2)	C(17)—C(16)—H(16)	120.562
Cl(1)—C(15)—C(16)	119.0 (3)	C(12)—C(17)—H(17)	119.414
C(14)—C(15)—C(16)	121.1 (3)	C(16)—C(17)—H(17)	119.421
C(15)—C(16)—C(17)	118.9 (3)	C(19)—C(20)—H(20)	124.5 (15)
C(12)—C(17)—C(16)	121.2 (3)	C(21)—C(20)—H(20)	123.6 (15)
O(2)—C(18)—C(3)	121.0 (2)	C(20)—C(21)—H(21A)	110.941
O(2)—C(18)—C(19)	119.8 (3)	C(20)—C(21)—H(21B)	110.944
C(3)—C(18)—C(19)	119.2 (3)	C(22)—C(21)—H(21A)	110.955
C(18)—C(19)—C(20)	127.7 (3)	C(22)—C(21)—H(21B)	110.945
C(18)—C(19)—C(23)	120.9 (3)	H(21A)—C(21)—H(21B)	108.957
C(20)—C(19)—C(23)	111.3 (3)	C(21)—C(22)—H(22A)	110.164
C(19)—C(20)—C(21)	111.8 (3)	C(21)—C(22)—H(22B)	110.161
C(20)—C(21)—C(22)	104.1 (3)	C(23)—C(22)—H(22A)	110.158
C(21)—C(22)—C(23)	107.7 (3)	C(23)—C(22)—H(22B)	110.167
C(19)—C(23)—C(22)	104.2 (3)	H(22A)—C(22)—H(22B)	108.463
O(1)—C(2)—H(2)	108.562	C(19)—C(23)—H(23A)	110.912
C(3)—C(2)—H(2)	108.556	C(19)—C(23)—H(23B)	110.920
C(12)—C(2)—H(2)	108.535	C(22)—C(23)—H(23A)	110.929
C(2)—C(3)—H(3)	109.737	C(22)—C(23)—H(23B)	110.927
C(4)—C(3)—H(3)	109.735	H(23A)—C(23)—H(23B)	108.947
C(2)—O(1)—C(5)—C(4)	-41.7 (2)	C(11)—C(6)—C(7)—C(8)	-0.6 (4)
C(2)—O(1)—C(5)—C(6)	-165.24 (17)	C(6)—C(7)—C(8)—C(9)	-0.0 (4)

C(5)—O(1)—C(2)—C(3)	34.0 (2)	C(7)—C(8)—C(9)—C(10)	0.4 (5)
C(5)—O(1)—C(2)—C(12)	159.47 (17)	C(8)—C(9)—C(10)—C(11)	-0.1 (5)
O(1)—C(2)—C(3)—C(4)	-12.5 (3)	C(9)—C(10)—C(11)—C(6)	-0.6 (5)
O(1)—C(2)—C(3)—C(18)	109.02 (18)	C(2)—C(12)—C(13)—C(14)	175.9 (2)
O(1)—C(2)—C(12)—C(13)	151.51 (18)	C(2)—C(12)—C(17)—C(16)	-175.4 (2)
O(1)—C(2)—C(12)—C(17)	-31.7 (3)	C(13)—C(12)—C(17)—C(16)	1.4 (4)
C(3)—C(2)—C(12)—C(13)	-89.4 (3)	C(17)—C(12)—C(13)—C(14)	-1.0 (4)
C(3)—C(2)—C(12)—C(17)	87.4 (3)	C(12)—C(13)—C(14)—C(15)	-0.2 (4)
C(12)—C(2)—C(3)—C(4)	-133.95 (19)	C(13)—C(14)—C(15)—Cl(1)	179.5 (2)
C(12)—C(2)—C(3)—C(18)	-12.4 (3)	C(13)—C(14)—C(15)—C(16)	1.1 (4)
C(2)—C(3)—C(4)—C(5)	-11.7 (3)	Cl(1)—C(15)—C(16)—C(17)	-179.07 (17)
C(2)—C(3)—C(18)—O(2)	-85.7 (3)	C(14)—C(15)—C(16)—C(17)	-0.6 (4)
C(2)—C(3)—C(18)—C(19)	91.9 (3)	C(15)—C(16)—C(17)—C(12)	-0.6 (4)
C(4)—C(3)—C(18)—O(2)	29.9 (3)	O(2)—C(18)—C(19)—C(20)	-162.7 (2)
C(4)—C(3)—C(18)—C(19)	-152.55 (18)	O(2)—C(18)—C(19)—C(23)	13.7 (4)
C(18)—C(3)—C(4)—C(5)	-131.75 (19)	C(3)—C(18)—C(19)—C(20)	19.7 (4)
C(3)—C(4)—C(5)—O(1)	31.9 (3)	C(3)—C(18)—C(19)—C(23)	-163.86 (18)
C(3)—C(4)—C(5)—C(6)	152.05 (19)	C(18)—C(19)—C(20)—C(21)	176.2 (2)
O(1)—C(5)—C(6)—C(7)	42.3 (3)	C(18)—C(19)—C(23)—C(22)	177.59 (19)
O(1)—C(5)—C(6)—C(11)	-140.95 (19)	C(20)—C(19)—C(23)—C(22)	-5.5 (3)
C(4)—C(5)—C(6)—C(7)	-74.2 (3)	C(23)—C(19)—C(20)—C(21)	-0.5 (3)
C(4)—C(5)—C(6)—C(11)	102.5 (3)	C(19)—C(20)—C(21)—C(22)	6.3 (4)
C(5)—C(6)—C(7)—C(8)	176.2 (2)	C(20)—C(21)—C(22)—C(23)	-9.4 (4)
C(5)—C(6)—C(11)—C(10)	-175.9 (2)	C(21)—C(22)—C(23)—C(19)	9.2 (4)
C(7)—C(6)—C(11)—C(10)	0.9 (4)		

Symmetry codes: (i)  $x+1, y, z$ ; (ii)  $-x+3/2, y+1/2, -z+3/2$ ; (iii)  $x-1, y, z$ ; (iv)  $-x+3/2, y-1/2, -z+3/2$ ; (v)  $-x+1/2, y+1/2, -z+3/2$ ; (vi)  $-x+1/2, y-1/2, -z+3/2$ ; (vii)  $x-1/2, -y+1/2, z-1/2$ ; (viii)  $-x, -y+1, -z+1$ ; (ix)  $-x+1, -y+1, -z+1$ ; (x)  $x+1/2, -y+1/2, z+1/2$ .