

Acta Crystallographica Section E

Structure Reports

Online

ISSN 1600-5368

(E)-2-[(2-Formylphenoxy)methyl]-3-(4-methylphenyl)prop-2-enitrileN. Manikandan,^a S. Murugavel,^{b*} D. Kannan^c and M. Bakthadoss^c^aDepartment of Physics, Bharathidasan Engineering College, Natturampalli, Vellore 635 854, India, ^bDepartment of Physics, Thanthai Periyar Government Institute of Technology, Vellore 632 002, India, and ^cDepartment of Organic Chemistry, University of Madras, Chennai 600 025, India

Correspondence e-mail: smurugavel27@gmail.com

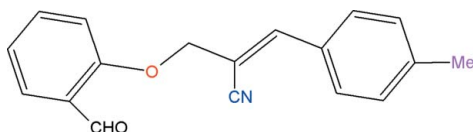
Received 17 November 2011; accepted 29 November 2011

Key indicators: single-crystal X-ray study; $T = 293$ K; mean $\sigma(\text{C}-\text{C}) = 0.003$ Å; R factor = 0.041; wR factor = 0.133; data-to-parameter ratio = 17.4.

In the title compound, $\text{C}_{18}\text{H}_{15}\text{NO}_2$, the dihedral angle between the two benzene rings is $74.8(1)^\circ$. The carbonitrile chain is almost linear, the $\text{C}-\text{C}-\text{N}$ angle being $176.2(2)^\circ$. In the crystal, $\pi-\pi$ interactions [centroid-centroid distance = $3.842(1)$ Å] are observed.

Related literature

For background to the synthetic procedure, see: Bakthadoss & Murugan (2010). For related structures, see: Swaminathan *et al.* (2011); Prasanna *et al.* (2011).



Experimental

Crystal data

 $\text{C}_{18}\text{H}_{15}\text{NO}_2$ $M_r = 277.31$

Monoclinic, $P2_1/c$
 $a = 7.0792(4)$ Å
 $b = 13.7006(7)$ Å
 $c = 15.3587(9)$ Å
 $\beta = 96.782(2)^\circ$
 $V = 1479.21(14)$ Å³

$Z = 4$
 Mo $K\alpha$ radiation
 $\mu = 0.08$ mm⁻¹
 $T = 293$ K
 $0.23 \times 0.21 \times 0.15$ mm

Data collection

Bruker APEXII CCD diffractometer
 Absorption correction: multi-scan (SADABS; Sheldrick, 1996)
 $T_{\min} = 0.982$, $T_{\max} = 0.988$

15027 measured reflections
 3321 independent reflections
 1950 reflections with $I > 2\sigma(I)$
 $R_{\text{int}} = 0.022$

Refinement

$R[F^2 > 2\sigma(F^2)] = 0.041$
 $wR(F^2) = 0.133$
 $S = 1.01$
 3321 reflections

191 parameters
 H-atom parameters constrained
 $\Delta\rho_{\text{max}} = 0.14$ e Å⁻³
 $\Delta\rho_{\text{min}} = -0.14$ e Å⁻³

Data collection: APEX2 (Bruker, 2004); cell refinement: APEX2 and SAINT (Bruker, 2004); data reduction: SAINT and XPREP (Bruker, 2004); program(s) used to solve structure: SHELXS97 (Sheldrick, 2008); program(s) used to refine structure: SHELXL97 (Sheldrick, 2008); molecular graphics: ORTEP-3 (Farrugia (1997)); software used to prepare material for publication: SHELXL97 and PLATON (Spek, 2009).

The authors thank Dr Babu Vargheese, SAIF, IIT, Madras, India, for his help with the data collection.

Supplementary data and figures for this paper are available from the IUCr electronic archives (Reference: IM2342).

References

- Bakthadoss, M. & Murugan, G. (2010). *Eur. J. Org. Chem.* pp. 5825–5830.
 Bruker (2004). APEX2, SAINT and XPREP. Bruker AXS Inc., Madison, Wisconsin, USA.
 Farrugia, L. J. (1997). *J. Appl. Cryst.* **30**, 565.
 Prasanna, C. M. S., Sethusankar, K., Rajesh, R. & Raghunathan, R. (2011). *Acta Cryst.* **E67**, o2176.
 Sheldrick, G. M. (1996). SADABS. University of Göttingen, Germany.
 Sheldrick, G. M. (2008). *Acta Cryst.* **A64**, 112–122.
 Spek, A. L. (2009). *Acta Cryst.* **D65**, 148–155.
 Swaminathan, K., Sethusankar, K., Murugan, G. & Bakthadoss, M. (2011). *Acta Cryst.* **E67**, o2000.

supporting information

Acta Cryst. (2012). E68, o28 [doi:10.1107/S1600536811051415]

(E)-2-[(2-Formylphenoxy)methyl]-3-(4-methylphenyl)prop-2-enenitrile

N. Manikandan, S. Murugavel, D. Kannan and M. Bakthadoss

S1. Comment

The title compound is a stereodefined trisubstituted olefin, synthesized from the corresponding bromoderivative of a Baylis-Hillman adduct with salicylaldehyde *via* simple $\text{S}_{\text{N}}2$ reaction in good yields. This *o*-salicylaldehyde derivative is an important precursor for many heterocyclic frameworks (Bakthadoss *et al.*, 2010).

The title compound comprises a benzaldehyde moiety connected to a tolyl ring through a chain formed by a methoxy methyl and a propenenitrile group. The X-ray analysis confirms the molecular structure and atom connectivity as illustrated in Fig. 1.

The dihedral angle between the two aromatic rings is $74.8(1)^\circ$. The propenenitrile (N1/C17/C8–C11) plane forms dihedral angles of $53.6(1)^\circ$ and $22.7(1)^\circ$, respectively, with the formyl phenyl and tolyl rings. The bond length C9–C17 [$1.431(2) \text{ \AA}$] is significantly shorter than the expected value for a C–C single bond because of conjugation effects (Prasanna *et al.*, 2011). The carbonitrile side chain (C9–C17–N1) is almost linear, with the angle around the central carbon atom being $176.2(2)^\circ$. The geometric parameters of the title molecule agree well with those reported for similar structures (Swaminathan *et al.*, 2011, Prasanna *et al.*, 2011).

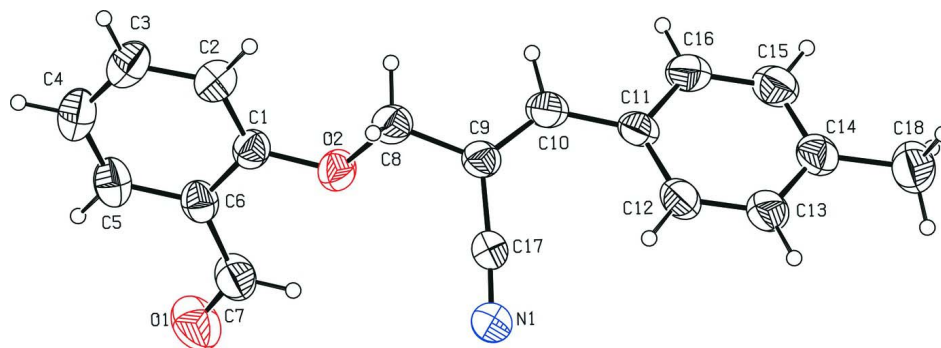
The crystal packing (Fig. 2) is stabilized by intermolecular π – π interactions with a C_{g} – C_{g}^i separation of $3.842(1) \text{ \AA}$ [Fig. 2; C_{g} is the centroid of the C1–C6 benzene ring, symmetry code as in Fig. 2].

S2. Experimental

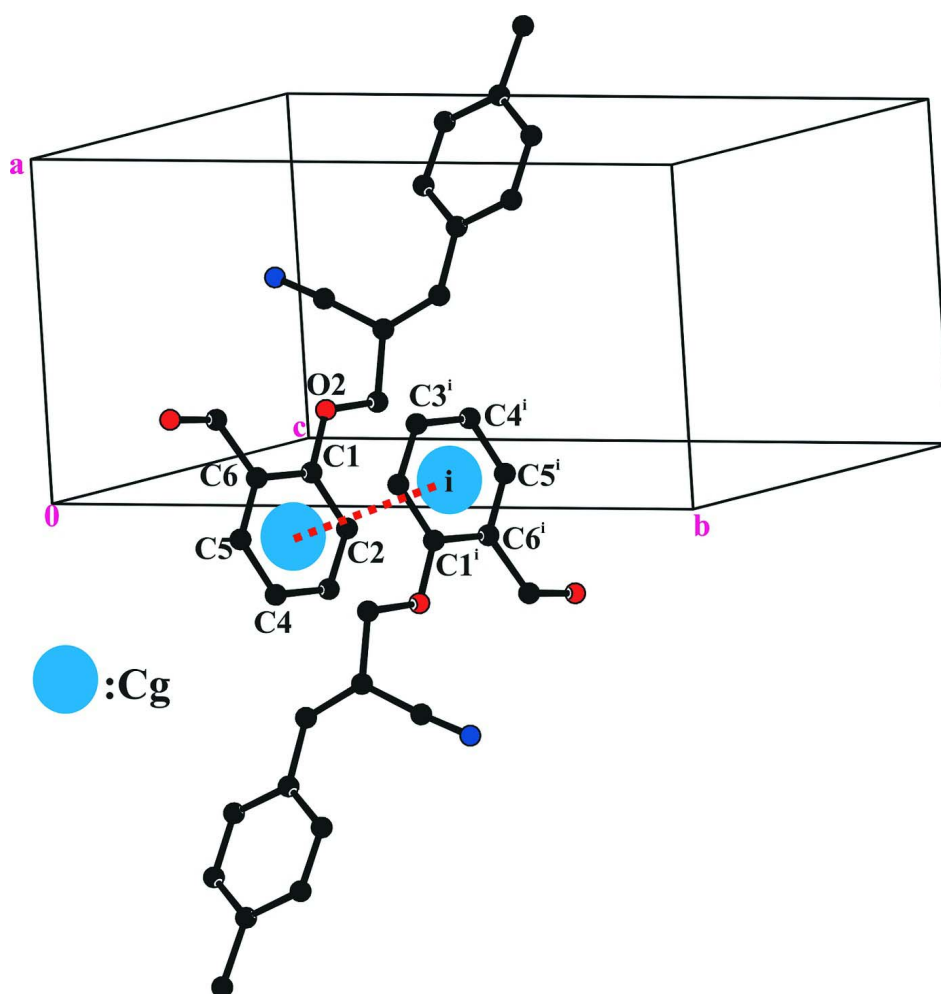
A solution of salicylaldehyde (1.0 mmol, 0.12 g) and potassium carbonate (1.5 mmol, 0.207 g) in acetonitrile was stirred for 15 minutes at room temperature. To this solution, (E)-2-(bromomethyl)-3-(4-methylphenyl)prop-2-enenitrile (1.2 mmol, 0.28 g) was added dropwise till the addition is complete. After the completion of the reaction, as indicated by TLC, acetonitrile was evaporated. EtOAc (15 ml) and water (15 ml) were added to the crude mass. The organic layer was dried over anhydrous sodium sulfate. Removal of solvent led to a crude product, which was purified through a pad of silica gel (100–200 mesh) using ethylacetate and hexanes (1:9) as solvents. The pure title compound was obtained as a colourless solid (0.24 g, 86 % yield). Recrystallization was carried out using ethylacetate as the solvent.

S3. Refinement

H atoms were positioned geometrically, with C–H = 0.93 – 0.97 \AA and constrained to ride on their parent atom, with $U_{\text{iso}}(\text{H}) = 1.5U_{\text{eq}}(\text{C})$ for methyl H atoms and $1.2U_{\text{eq}}(\text{C})$ for the other H atoms.

**Figure 1**

Molecular structure of the title compound showing displacement ellipsoids at the 30% probability level. H atoms are presented as a small spheres of arbitrary radii.

**Figure 2**

View of the π — π interactions (dotted lines) in the crystal structure of the title compound. C_g denotes the centroid of the C1–C6 benzene ring. [Symmetry code: (i) $-x, -y, -z$].

(E)-2-[(2-Formylphenoxy)methyl]-3-(4-methylphenyl)prop-2-enitrile*Crystal data*

$C_{18}H_{15}NO_2$	$F(000) = 584$
$M_r = 277.31$	$D_x = 1.245 \text{ Mg m}^{-3}$
Monoclinic, $P2_1/c$	Mo $K\alpha$ radiation, $\lambda = 0.71073 \text{ \AA}$
Hall symbol: -P 2ybc	Cell parameters from 3403 reflections
$a = 7.0792 (4) \text{ \AA}$	$\theta = 2.0\text{--}27.5^\circ$
$b = 13.7006 (7) \text{ \AA}$	$\mu = 0.08 \text{ mm}^{-1}$
$c = 15.3587 (9) \text{ \AA}$	$T = 293 \text{ K}$
$\beta = 96.782 (2)^\circ$	Block, yellow
$V = 1479.21 (14) \text{ \AA}^3$	$0.23 \times 0.21 \times 0.15 \text{ mm}$
$Z = 4$	

Data collection

Bruker APEXII CCD diffractometer	15027 measured reflections
Radiation source: fine-focus sealed tube	3321 independent reflections
Graphite monochromator	1950 reflections with $I > 2\sigma(I)$
Detector resolution: $10.0 \text{ pixels mm}^{-1}$	$R_{\text{int}} = 0.022$
ω scans	$\theta_{\text{max}} = 27.6^\circ$, $\theta_{\text{min}} = 2.0^\circ$
Absorption correction: multi-scan (SADABS; Sheldrick, 1996)	$h = -9 \rightarrow 9$
$T_{\text{min}} = 0.982$, $T_{\text{max}} = 0.988$	$k = -17 \rightarrow 17$
	$l = -19 \rightarrow 19$

Refinement

Refinement on F^2	Secondary atom site location: difference Fourier map
Least-squares matrix: full	Hydrogen site location: inferred from neighbouring sites
$R[F^2 > 2\sigma(F^2)] = 0.041$	H-atom parameters constrained
$wR(F^2) = 0.133$	$w = 1/[\sigma^2(F_o^2) + (0.0553P)^2 + 0.2089P]$
$S = 1.01$	where $P = (F_o^2 + 2F_c^2)/3$
3321 reflections	$(\Delta/\sigma)_{\text{max}} < 0.001$
191 parameters	$\Delta\rho_{\text{max}} = 0.14 \text{ e \AA}^{-3}$
0 restraints	$\Delta\rho_{\text{min}} = -0.14 \text{ e \AA}^{-3}$
Primary atom site location: structure-invariant direct methods	

Special details

Geometry. All esds (except the esd in the dihedral angle between two l.s. planes) are estimated using the full covariance matrix. The cell esds are taken into account individually in the estimation of esds in distances, angles and torsion angles; correlations between esds in cell parameters are only used when they are defined by crystal symmetry. An approximate (isotropic) treatment of cell esds is used for estimating esds involving l.s. planes.

Refinement. Refinement of F^2 against ALL reflections. The weighted R-factor wR and goodness of fit S are based on F^2 , conventional R-factors R are based on F , with F set to zero for negative F^2 . The threshold expression of $F^2 > 2\sigma(F^2)$ is used only for calculating R-factors(gt) etc. and is not relevant to the choice of reflections for refinement. R-factors based on F^2 are statistically about twice as large as those based on F , and R-factors based on ALL data will be even larger.

Fractional atomic coordinates and isotropic or equivalent isotropic displacement parameters (\AA^2)

	x	y	z	$U_{\text{iso}}^*/U_{\text{eq}}$
N1	0.6118 (2)	0.26454 (11)	0.25898 (11)	0.0828 (5)
O1	0.2658 (2)	0.23139 (12)	-0.09622 (11)	0.1133 (5)
O2	0.25632 (15)	0.38860 (8)	0.11791 (7)	0.0726 (3)
C1	0.0835 (2)	0.37959 (11)	0.06904 (11)	0.0621 (4)

C2	-0.0823 (2)	0.42103 (13)	0.09048 (12)	0.0750 (5)
H2	-0.0825	0.4565	0.1421	0.090*
C3	-0.2478 (2)	0.40934 (15)	0.03456 (14)	0.0856 (6)
H3	-0.3599	0.4372	0.0489	0.103*
C4	-0.2505 (3)	0.35721 (16)	-0.04214 (14)	0.0879 (6)
H4	-0.3631	0.3502	-0.0794	0.105*
C5	-0.0866 (3)	0.31602 (14)	-0.06293 (12)	0.0777 (5)
H5	-0.0879	0.2812	-0.1150	0.093*
C6	0.0820 (2)	0.32522 (11)	-0.00780 (11)	0.0648 (4)
C7	0.2538 (3)	0.27629 (15)	-0.02978 (14)	0.0846 (5)
H7	0.3621	0.2802	0.0107	0.101*
C8	0.2646 (2)	0.43560 (13)	0.20139 (11)	0.0716 (5)
H8A	0.1879	0.4003	0.2392	0.086*
H8B	0.2167	0.5018	0.1945	0.086*
C9	0.4680 (2)	0.43625 (11)	0.24015 (10)	0.0627 (4)
C10	0.5640 (2)	0.51893 (12)	0.25968 (10)	0.0691 (5)
H10	0.4965	0.5755	0.2432	0.083*
C11	0.7555 (2)	0.53562 (11)	0.30210 (10)	0.0645 (4)
C12	0.8639 (3)	0.46728 (13)	0.35274 (12)	0.0802 (5)
H12	0.8151	0.4051	0.3595	0.096*
C13	1.0416 (3)	0.49015 (14)	0.39295 (13)	0.0867 (6)
H13	1.1104	0.4430	0.4268	0.104*
C14	1.1218 (3)	0.58109 (14)	0.38479 (12)	0.0775 (5)
C15	1.0151 (3)	0.64806 (14)	0.33374 (14)	0.0858 (6)
H15	1.0656	0.7097	0.3260	0.103*
C16	0.8365 (3)	0.62670 (12)	0.29389 (13)	0.0799 (5)
H16	0.7680	0.6744	0.2606	0.096*
C17	0.5526 (2)	0.34163 (12)	0.25245 (11)	0.0626 (4)
C18	1.3145 (3)	0.60602 (18)	0.43169 (16)	0.1045 (7)
H18A	1.3777	0.6508	0.3967	0.157*
H18B	1.3890	0.5476	0.4411	0.157*
H18C	1.2998	0.6356	0.4872	0.157*

Atomic displacement parameters (Å²)

	U^{11}	U^{22}	U^{33}	U^{12}	U^{13}	U^{23}
N1	0.0778 (10)	0.0609 (9)	0.1058 (12)	-0.0005 (7)	-0.0062 (8)	-0.0046 (8)
O1	0.1137 (12)	0.1266 (12)	0.1033 (12)	-0.0130 (9)	0.0288 (9)	-0.0442 (10)
O2	0.0653 (7)	0.0851 (8)	0.0650 (7)	0.0095 (5)	-0.0017 (5)	-0.0154 (6)
C1	0.0592 (9)	0.0628 (9)	0.0630 (10)	-0.0010 (7)	0.0026 (8)	0.0060 (8)
C2	0.0696 (11)	0.0788 (11)	0.0761 (12)	0.0068 (8)	0.0068 (9)	0.0040 (9)
C3	0.0615 (11)	0.0977 (14)	0.0965 (15)	0.0056 (9)	0.0051 (10)	0.0173 (12)
C4	0.0681 (12)	0.1052 (15)	0.0864 (14)	-0.0147 (10)	-0.0076 (10)	0.0145 (12)
C5	0.0758 (12)	0.0859 (12)	0.0700 (12)	-0.0228 (9)	0.0022 (9)	0.0022 (9)
C6	0.0651 (10)	0.0634 (9)	0.0656 (10)	-0.0123 (7)	0.0067 (8)	0.0028 (8)
C7	0.0784 (12)	0.0901 (13)	0.0856 (14)	-0.0107 (10)	0.0112 (10)	-0.0195 (11)
C8	0.0733 (10)	0.0748 (11)	0.0655 (11)	0.0118 (8)	0.0038 (8)	-0.0101 (8)
C9	0.0720 (10)	0.0596 (9)	0.0554 (9)	0.0067 (7)	0.0026 (7)	-0.0061 (7)

C10	0.0839 (11)	0.0567 (9)	0.0656 (10)	0.0108 (8)	0.0037 (9)	-0.0036 (8)
C11	0.0798 (11)	0.0495 (8)	0.0640 (10)	0.0044 (7)	0.0078 (8)	-0.0086 (7)
C12	0.1049 (14)	0.0552 (9)	0.0741 (11)	-0.0040 (9)	-0.0157 (10)	-0.0031 (8)
C13	0.1041 (14)	0.0701 (11)	0.0791 (13)	0.0091 (10)	-0.0170 (11)	-0.0103 (9)
C14	0.0785 (11)	0.0775 (12)	0.0773 (12)	0.0015 (9)	0.0130 (9)	-0.0236 (10)
C15	0.0853 (13)	0.0634 (11)	0.1111 (16)	-0.0060 (9)	0.0212 (12)	-0.0088 (11)
C16	0.0834 (12)	0.0572 (10)	0.0991 (14)	0.0075 (8)	0.0105 (10)	0.0000 (9)
C17	0.0622 (9)	0.0593 (10)	0.0650 (10)	-0.0037 (7)	0.0013 (7)	-0.0061 (8)
C18	0.0862 (14)	0.1194 (17)	0.1068 (17)	-0.0062 (12)	0.0066 (12)	-0.0322 (14)

Geometric parameters (Å, °)

N1—C17	1.1362 (19)	C9—C10	1.337 (2)
O1—C7	1.203 (2)	C9—C17	1.431 (2)
O2—C1	1.3634 (17)	C10—C11	1.451 (2)
O2—C8	1.4297 (19)	C10—H10	0.9300
C1—C2	1.378 (2)	C11—C16	1.385 (2)
C1—C6	1.395 (2)	C11—C12	1.389 (2)
C2—C3	1.378 (2)	C12—C13	1.371 (2)
C2—H2	0.9300	C12—H12	0.9300
C3—C4	1.376 (3)	C13—C14	1.381 (3)
C3—H3	0.9300	C13—H13	0.9300
C4—C5	1.362 (3)	C14—C15	1.374 (3)
C4—H4	0.9300	C14—C18	1.505 (3)
C5—C6	1.385 (2)	C15—C16	1.370 (3)
C5—H5	0.9300	C15—H15	0.9300
C6—C7	1.462 (3)	C16—H16	0.9300
C7—H7	0.9300	C18—H18A	0.9600
C8—C9	1.492 (2)	C18—H18B	0.9600
C8—H8A	0.9700	C18—H18C	0.9600
C8—H8B	0.9700		
C1—O2—C8	118.26 (12)	C17—C9—C8	114.60 (13)
O2—C1—C2	124.43 (15)	C9—C10—C11	131.12 (15)
O2—C1—C6	115.50 (14)	C9—C10—H10	114.4
C2—C1—C6	120.06 (15)	C11—C10—H10	114.4
C3—C2—C1	119.25 (18)	C16—C11—C12	116.81 (16)
C3—C2—H2	120.4	C16—C11—C10	118.41 (15)
C1—C2—H2	120.4	C12—C11—C10	124.76 (16)
C4—C3—C2	121.25 (18)	C13—C12—C11	121.01 (17)
C4—C3—H3	119.4	C13—C12—H12	119.5
C2—C3—H3	119.4	C11—C12—H12	119.5
C5—C4—C3	119.34 (17)	C12—C13—C14	122.04 (18)
C5—C4—H4	120.3	C12—C13—H13	119.0
C3—C4—H4	120.3	C14—C13—H13	119.0
C4—C5—C6	121.04 (18)	C15—C14—C13	116.75 (18)
C4—C5—H5	119.5	C15—C14—C18	121.87 (19)
C6—C5—H5	119.5	C13—C14—C18	121.36 (19)

C5—C6—C1	119.04 (16)	C16—C15—C14	121.92 (18)
C5—C6—C7	119.82 (17)	C16—C15—H15	119.0
C1—C6—C7	121.13 (15)	C14—C15—H15	119.0
O1—C7—C6	125.05 (18)	C15—C16—C11	121.46 (17)
O1—C7—H7	117.5	C15—C16—H16	119.3
C6—C7—H7	117.5	C11—C16—H16	119.3
O2—C8—C9	107.21 (13)	N1—C17—C9	176.18 (17)
O2—C8—H8A	110.3	C14—C18—H18A	109.5
C9—C8—H8A	110.3	C14—C18—H18B	109.5
O2—C8—H8B	110.3	H18A—C18—H18B	109.5
C9—C8—H8B	110.3	C14—C18—H18C	109.5
H8A—C8—H8B	108.5	H18A—C18—H18C	109.5
C10—C9—C17	122.98 (14)	H18B—C18—H18C	109.5
C10—C9—C8	122.40 (14)		
C8—O2—C1—C2	6.6 (2)	O2—C8—C9—C17	-59.52 (19)
C8—O2—C1—C6	-174.26 (14)	C17—C9—C10—C11	-6.1 (3)
O2—C1—C2—C3	178.05 (15)	C8—C9—C10—C11	175.59 (16)
C6—C1—C2—C3	-1.0 (2)	C9—C10—C11—C16	163.39 (19)
C1—C2—C3—C4	0.0 (3)	C9—C10—C11—C12	-18.2 (3)
C2—C3—C4—C5	0.3 (3)	C16—C11—C12—C13	0.6 (3)
C3—C4—C5—C6	0.5 (3)	C10—C11—C12—C13	-177.83 (17)
C4—C5—C6—C1	-1.5 (3)	C11—C12—C13—C14	-0.5 (3)
C4—C5—C6—C7	177.08 (18)	C12—C13—C14—C15	-0.4 (3)
O2—C1—C6—C5	-177.37 (13)	C12—C13—C14—C18	178.02 (19)
C2—C1—C6—C5	1.8 (2)	C13—C14—C15—C16	1.1 (3)
O2—C1—C6—C7	4.1 (2)	C18—C14—C15—C16	-177.31 (19)
C2—C1—C6—C7	-176.79 (16)	C14—C15—C16—C11	-1.0 (3)
C5—C6—C7—O1	4.5 (3)	C12—C11—C16—C15	0.1 (3)
C1—C6—C7—O1	-176.95 (19)	C10—C11—C16—C15	178.63 (17)
C1—O2—C8—C9	-179.60 (13)	C10—C9—C17—N1	-160 (3)
O2—C8—C9—C10	118.94 (17)	C8—C9—C17—N1	19 (3)