

Acta Crystallographica Section E

Structure Reports

Online

ISSN 1600-5368

1*H*-1,2,4-Triazol-4-ium (3,4-dichlorophenyl)methanesulfonate

Ling Zhang, Guri L. V. Damu, Jing-Song Lv, Rong-Xia Geng* and Cheng-He Zhou*

 Laboratory of Bioorganic & Medicinal Chemistry, School of Chemistry and Chemical Engineering, Southwest University, Chongqing 400715, People's Republic of China
 Correspondence e-mail: geng0712@swu.edu.cn, zhouch@swu.edu.cn

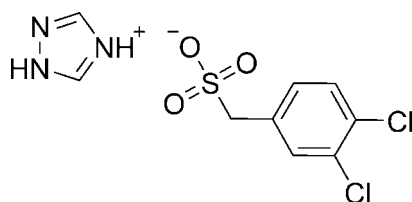
Received 4 December 2011; accepted 9 December 2011

 Key indicators: single-crystal X-ray study; $T = 296$ K; mean $\sigma(\text{C}-\text{C}) = 0.005$ Å; R factor = 0.044; wR factor = 0.124; data-to-parameter ratio = 12.2.

In the title molecular salt, $\text{C}_2\text{H}_4\text{N}_3^+\cdot\text{C}_7\text{H}_5\text{Cl}_2\text{O}_3\text{S}^-$, $\text{C}-\text{C}-\text{S}$ angle $[112.25(18)^\circ]$ deviates slightly from that expected for ideal sp^3 -hybridization geometry. In the crystal, the components are linked by $\text{N}-\text{H}\cdots\text{O}$ and bifurcated $\text{N}-\text{H}\cdots(\text{O},\text{O})$ hydrogen bonds into chains parallel to $[110]$.

Related literature

For applications of triazole compounds, see: Sen *et al.* (2010); Subbaraman *et al.* (2009); Wang & Zhou (2011); Zhou *et al.* (2009); Bai *et al.* (2007); Chang *et al.* (2011).



Experimental

Crystal data

$\text{C}_2\text{H}_4\text{N}_3^+\cdot\text{C}_7\text{H}_5\text{Cl}_2\text{O}_3\text{S}^-$
 $M_r = 310.15$
 Triclinic, $P\bar{1}$
 $a = 5.2430(6)$ Å
 $b = 8.2970(8)$ Å
 $c = 14.5656(15)$ Å
 $\alpha = 94.330(5)^\circ$
 $\beta = 98.387(6)^\circ$
 $\gamma = 92.292(5)^\circ$
 $V = 624.22(11)$ Å³
 $Z = 2$
 Mo $K\alpha$ radiation
 $\mu = 0.69$ mm⁻¹
 $T = 296$ K
 $0.30 \times 0.28 \times 0.25$ mm

Data collection

Bruker SMART CCD diffractometer
 Absorption correction: multi-scan (*SADABS*; Sheldrick, 1996)
 $T_{\min} = 0.820$, $T_{\max} = 0.846$
 8971 measured reflections
 2196 independent reflections
 2000 reflections with $I > 2\sigma(I)$
 $R_{\text{int}} = 0.030$

Refinement

$R[F^2 > 2\sigma(F^2)] = 0.044$
 $wR(F^2) = 0.124$
 $S = 1.03$
 2196 reflections
 180 parameters
 H atoms treated by a mixture of independent and constrained refinement
 $\Delta\rho_{\max} = 0.69$ e Å⁻³
 $\Delta\rho_{\min} = -0.60$ e Å⁻³

Table 1
 Hydrogen-bond geometry (Å, °).

<i>D</i> — <i>H</i> ⋯ <i>A</i>	<i>D</i> — <i>H</i>	<i>H</i> ⋯ <i>A</i>	<i>D</i> ⋯ <i>A</i>	<i>D</i> — <i>H</i> ⋯ <i>A</i>
$\text{N1}-\text{H1M}\cdots\text{O1}^{\text{i}}$	0.85 (4)	1.96 (4)	2.709 (3)	146 (4)
$\text{N3}-\text{H4M}\cdots\text{O2}^{\text{ii}}$	0.79 (4)	2.08 (4)	2.768 (3)	146 (3)
$\text{N3}-\text{H4M}\cdots\text{O2}^{\text{iii}}$	0.79 (4)	2.54 (3)	3.089 (3)	128 (3)

Symmetry codes: (i) $x, y + 1, z$; (ii) $x - 1, y, z$; (iii) $-x, -y, -z$.

Data collection: *SMART* (Bruker, 2001); cell refinement: *SAINT* (Bruker, 2001); data reduction: *SAINT*; program(s) used to solve structure: *SHELXS97* (Sheldrick, 2008); program(s) used to refine structure: *SHELXL97* (Sheldrick, 2008); molecular graphics: *PLATON* (Spek, 2009); software used to prepare material for publication: *SHELXTL* (Sheldrick, 2008).

This work was partially supported by the Natural Science Foundation of China (21172181), the Specialized Research Fund for the Doctoral Program of Higher Education of China (SRFDP 20110182110007) and the Fundamental Research Funds for the Central Universities (XDJK2011D007).

Supplementary data and figures for this paper are available from the IUCr electronic archives (Reference: LH5392).

References

- Bai, X., Zhou, C.-H. & Mi, J.-L. (2007). *Chem. Res. Appl.* **19**, 721–729.
 Bruker (2001). *SMART* and *SAINT*. Bruker AXS Inc., Madison, Wisconsin, USA.
 Chang, J.-J., Wang, Y., Zhang, H.-Z., Zhou, C.-H., Geng, R.-X. & Ji, Q.-G. (2011). *Chem. J. Chin. Univ.* **32**, 1970–1985.
 Sen, U., Bozkurt, A. & Ata, A. (2010). *J. Power Sources*, **195**, 7720–7726.
 Sheldrick, G. M. (1996). *SADABS*. University of Göttingen, Germany.
 Sheldrick, G. M. (2008). *Acta Cryst.* **A64**, 112–122.
 Spek, A. L. (2009). *Acta Cryst.* **D65**, 148–155.
 Subbaraman, R., Ghassemi, H. & Zawodzinski, T. Jr (2009). *Solid State Ionics*, **180**, 1143–1150.
 Wang, Y. & Zhou, C.-H. (2011). *Sci. Sin. Chem.* **41**, 1429–1456.
 Zhou, C.-H., Gan, L.-L., Zhang, Y.-Y., Zhang, F.-F., Wang, G.-Z., Jin, L. & Geng, R. X. (2009). *Sci. China Ser. B*, **52**, 415–458.

supporting information

Acta Cryst. (2012). E68, o131 [doi:10.1107/S1600536811053062]

1H-1,2,4-Triazol-4-ium (3,4-dichlorophenyl)methanesulfonate

Ling Zhang, Guri L. V. Damu, Jing-Song Lv, Rong-Xia Geng and Cheng-He Zhou

S1. Comment

Triazole is a unique molecule which could exert diverse non-covalent interactions and endow triazole derivatives to exhibit various potential applications in medicinal chemistry (Wang & Zhou, 2011), agrochemical and chemical fields (Bai *et al.*, 2007) and material science (Chang *et al.*, 2011). Work has shown that triazole derivatives could be used as proton transport facilitators for sulfonic acid based membranes for high temperature fuel cell operations (Sen *et al.*, 2010; Subbaraman *et al.*, 2009). Our interest is to investigate the intractions of triazole compounds with diverse anions for the formation of supramolecular drugs (Zhou *et al.*, 2009). Herein we report the crystal structure of title compound.

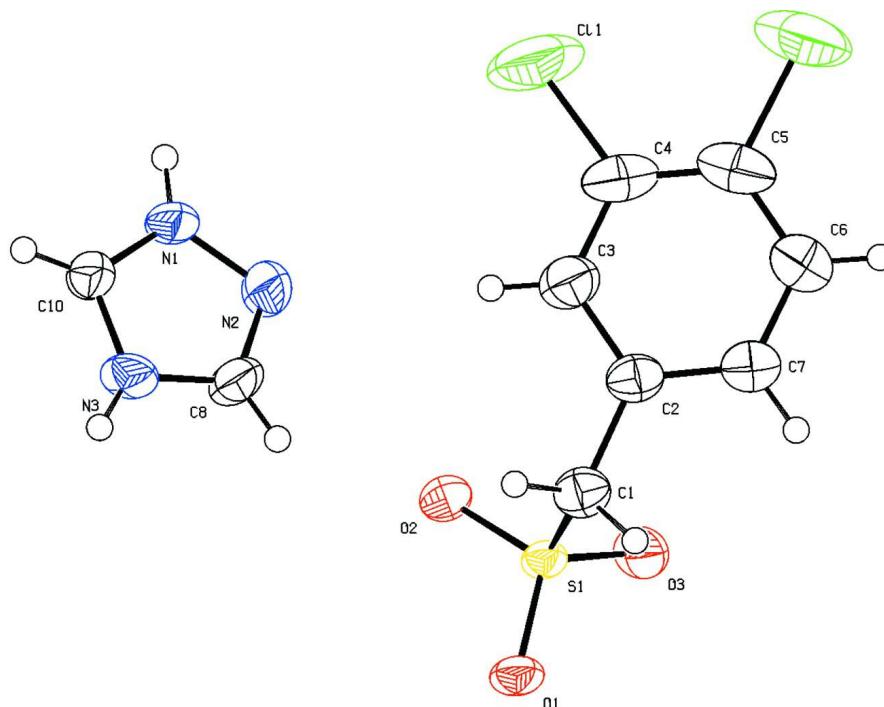
In the molecular structure the title compound (Fig. 1) there is a slight deviation of the C2—C1—S1 angle (112.25°) in terms ideal sp³ hybridization geometry. In the crystal, the components are linked by N—H···O hydrogen bonds and bifurcated N—H···(O,O) into one dimensional chains along [110].

S2. Experimental

A crystal of title the compound suitable for X-ray analysis was grown from the solution of 1,2,4-triazole and (3,4-dichlorophenyl)methanesulfonic acid in methanol by slow evaporation at room temperature.

S3. Refinement

The H atoms of the anion were placed in calculated positions with C—H = 0.93 Å (aromatic) and 0.97 Å (methylene) and refined in a riding-motion approximation with $U_{\text{iso}}(\text{H}) = 1.2U_{\text{eq}}(\text{C})$. All H atoms in the cation were refined independently with isotropic displacement parameters.

**Figure 1**

The molecular structure of (I) showing displacement ellipsoids drawn at the 50% probability level.

1*H*-1,2,4-Triazol-4-ium (3,4-dichlorophenyl)methanesulfonate

Crystal data

$C_2H_4N_3^+ \cdot C_7H_3Cl_2O_3S^-$

$M_r = 310.15$

Triclinic, $P\bar{1}$

Hall symbol: $-P\ 1$

$a = 5.2430$ (6) Å

$b = 8.2970$ (8) Å

$c = 14.5656$ (15) Å

$\alpha = 94.330$ (5)°

$\beta = 98.387$ (6)°

$\gamma = 92.292$ (5)°

$V = 624.22$ (11) Å³

$Z = 2$

$F(000) = 316$

$D_x = 1.650$ Mg m⁻³

Mo $K\alpha$ radiation, $\lambda = 0.71073$ Å

Cell parameters from 4951 reflections

$\theta = 2.8\text{--}27.5^\circ$

$\mu = 0.69$ mm⁻¹

$T = 296$ K

Block, colorless

$0.30 \times 0.28 \times 0.25$ mm

Data collection

Bruker SMART CCD

diffractometer

Radiation source: fine-focus sealed tube

Graphite monochromator

φ scans and ω scans with κ offsets

Absorption correction: multi-scan

(*SADABS*; Sheldrick, 1996)

$T_{\min} = 0.820$, $T_{\max} = 0.846$

8971 measured reflections

2196 independent reflections

2000 reflections with $I > 2\sigma(I)$

$R_{\text{int}} = 0.030$

$\theta_{\max} = 25.0^\circ$, $\theta_{\min} = 2.5^\circ$

$h = -6 \rightarrow 6$

$k = -9 \rightarrow 9$

$l = -17 \rightarrow 17$

*Refinement*Refinement on F^2

Least-squares matrix: full

 $R[F^2 > 2\sigma(F^2)] = 0.044$ $wR(F^2) = 0.124$ $S = 1.03$

2196 reflections

180 parameters

0 restraints

Primary atom site location: structure-invariant
direct methodsSecondary atom site location: difference Fourier
mapHydrogen site location: inferred from
neighbouring sitesH atoms treated by a mixture of independent
and constrained refinement $w = 1/[\sigma^2(F_o^2) + (0.0656P)^2 + 0.6305P]$ where $P = (F_o^2 + 2F_c^2)/3$ $(\Delta/\sigma)_{\max} < 0.001$ $\Delta\rho_{\max} = 0.69 \text{ e } \text{\AA}^{-3}$ $\Delta\rho_{\min} = -0.60 \text{ e } \text{\AA}^{-3}$ Extinction correction: *SHELXL97* (Sheldrick,
2008), $F_c^* = kF_c[1 + 0.001x F_c^2 \lambda^3 / \sin(2\theta)]^{-1/4}$

Extinction coefficient: 0.064 (7)

Special details

Geometry. All e.s.d.'s (except the e.s.d. in the dihedral angle between two l.s. planes) are estimated using the full covariance matrix. The cell e.s.d.'s are taken into account individually in the estimation of e.s.d.'s in distances, angles and torsion angles; correlations between e.s.d.'s in cell parameters are only used when they are defined by crystal symmetry. An approximate (isotropic) treatment of cell e.s.d.'s is used for estimating e.s.d.'s involving l.s. planes.

Refinement. Refinement of F^2 against ALL reflections. The weighted R -factor wR and goodness of fit S are based on F^2 , conventional R -factors R are based on F , with F set to zero for negative F^2 . The threshold expression of $F^2 > \sigma(F^2)$ is used only for calculating R -factors(gt) *etc.* and is not relevant to the choice of reflections for refinement. R -factors based on F^2 are statistically about twice as large as those based on F , and R -factors based on ALL data will be even larger.

Fractional atomic coordinates and isotropic or equivalent isotropic displacement parameters (\AA^2)

	x	y	z	$U_{\text{iso}}^*/U_{\text{eq}}$
H4M	-0.257 (7)	0.126 (5)	0.067 (2)	0.059 (10)*
C1	0.5971 (5)	-0.1996 (3)	0.24949 (19)	0.0405 (6)
H1A	0.4222	-0.1654	0.2491	0.049*
H1B	0.6118	-0.2993	0.2801	0.049*
C2	0.7822 (5)	-0.0722 (3)	0.30368 (18)	0.0393 (6)
C3	0.7467 (7)	0.0915 (4)	0.2965 (2)	0.0522 (8)
H3	0.6021	0.1240	0.2589	0.063*
C4	0.9246 (8)	0.2072 (4)	0.3449 (2)	0.0577 (9)
C5	1.1357 (8)	0.1603 (4)	0.4029 (2)	0.0634 (9)
C6	1.1715 (8)	-0.0016 (5)	0.4095 (3)	0.0751 (11)
H6	1.3146	-0.0343	0.4478	0.090*
C7	0.9978 (7)	-0.1156 (4)	0.3600 (2)	0.0560 (8)
H7	1.0266	-0.2248	0.3647	0.067*
C8	0.1007 (6)	0.1330 (3)	0.1058 (2)	0.0448 (7)
C10	-0.1080 (5)	0.3440 (3)	0.0826 (2)	0.0404 (6)
C11	0.8778 (3)	0.40861 (12)	0.33114 (10)	0.1080 (5)
C12	1.3556 (3)	0.30086 (16)	0.46816 (10)	0.1064 (5)
N1	0.1333 (4)	0.3833 (3)	0.10869 (16)	0.0393 (6)
N2	0.2733 (4)	0.2507 (3)	0.12354 (19)	0.0476 (6)
N3	-0.1339 (4)	0.1855 (3)	0.08066 (18)	0.0423 (6)
O1	0.4994 (3)	-0.3828 (2)	0.09619 (13)	0.0383 (5)
O2	0.5688 (4)	-0.0964 (2)	0.08476 (13)	0.0417 (5)
O3	0.9286 (3)	-0.2589 (2)	0.13509 (14)	0.0446 (5)

S1	0.65640 (11)	-0.23697 (7)	0.13202 (4)	0.0291 (2)
H3M	0.132 (7)	0.035 (5)	0.108 (3)	0.070 (11)*
H2M	-0.232 (8)	0.408 (5)	0.070 (3)	0.069 (11)*
H1M	0.197 (8)	0.480 (5)	0.111 (3)	0.069 (11)*

Atomic displacement parameters (Å²)

	U^{11}	U^{22}	U^{33}	U^{12}	U^{13}	U^{23}
C1	0.0418 (15)	0.0362 (14)	0.0448 (15)	-0.0018 (11)	0.0112 (12)	0.0037 (11)
C2	0.0474 (16)	0.0346 (14)	0.0369 (13)	0.0005 (11)	0.0119 (12)	0.0001 (11)
C3	0.067 (2)	0.0388 (16)	0.0495 (16)	0.0047 (14)	0.0037 (14)	0.0031 (13)
C4	0.089 (3)	0.0335 (16)	0.0525 (18)	-0.0047 (16)	0.0240 (18)	-0.0040 (13)
C5	0.069 (2)	0.057 (2)	0.060 (2)	-0.0170 (17)	0.0137 (17)	-0.0196 (16)
C6	0.069 (2)	0.061 (2)	0.083 (3)	0.0053 (18)	-0.020 (2)	-0.0160 (19)
C7	0.060 (2)	0.0419 (17)	0.0606 (19)	0.0051 (14)	-0.0021 (15)	-0.0072 (14)
C8	0.0402 (16)	0.0259 (14)	0.0685 (19)	0.0036 (11)	0.0082 (13)	0.0052 (13)
C10	0.0316 (14)	0.0324 (14)	0.0553 (16)	0.0028 (11)	0.0013 (12)	0.0011 (12)
C11	0.1756 (14)	0.0328 (5)	0.1118 (9)	-0.0042 (6)	0.0125 (9)	0.0028 (5)
C12	0.1059 (10)	0.0813 (8)	0.1162 (10)	-0.0352 (7)	-0.0009 (7)	-0.0397 (7)
N1	0.0373 (13)	0.0243 (12)	0.0543 (14)	-0.0071 (9)	0.0030 (10)	0.0023 (10)
N2	0.0283 (12)	0.0420 (14)	0.0704 (16)	0.0012 (10)	0.0000 (11)	0.0059 (12)
N3	0.0267 (12)	0.0332 (12)	0.0651 (16)	-0.0091 (10)	0.0086 (11)	-0.0048 (11)
O1	0.0332 (10)	0.0229 (9)	0.0571 (11)	-0.0051 (7)	0.0052 (8)	-0.0026 (8)
O2	0.0462 (11)	0.0250 (9)	0.0518 (11)	-0.0040 (8)	-0.0012 (8)	0.0092 (8)
O3	0.0264 (10)	0.0443 (11)	0.0617 (12)	-0.0004 (8)	0.0071 (8)	-0.0051 (9)
S1	0.0251 (4)	0.0196 (3)	0.0417 (4)	-0.0026 (2)	0.0042 (2)	0.0009 (2)

Geometric parameters (Å, °)

C1—C2	1.500 (4)	C7—H7	0.9300
C1—S1	1.790 (3)	C8—N2	1.289 (4)
C1—H1A	0.9700	C8—N3	1.332 (4)
C1—H1B	0.9700	C8—H3M	0.84 (4)
C2—C7	1.374 (4)	C10—N1	1.288 (4)
C2—C3	1.388 (4)	C10—N3	1.314 (4)
C3—C4	1.387 (5)	C10—H2M	0.86 (4)
C3—H3	0.9300	N1—N2	1.360 (3)
C4—C5	1.378 (6)	N1—H1M	0.86 (4)
C4—C11	1.721 (3)	N3—H4M	0.79 (4)
C5—C6	1.373 (6)	O1—S1	1.4538 (17)
C5—C12	1.732 (3)	O2—S1	1.4550 (19)
C6—C7	1.371 (5)	O3—S1	1.4405 (19)
C6—H6	0.9300		
C2—C1—S1	112.25 (18)	C6—C7—H7	119.3
C2—C1—H1A	109.2	C2—C7—H7	119.3
S1—C1—H1A	109.2	N2—C8—N3	111.8 (3)
C2—C1—H1B	109.2	N2—C8—H3M	124 (3)

S1—C1—H1B	109.2	N3—C8—H3M	124 (3)
H1A—C1—H1B	107.9	N1—C10—N3	106.9 (3)
C7—C2—C3	118.1 (3)	N1—C10—H2M	128 (3)
C7—C2—C1	120.3 (3)	N3—C10—H2M	126 (3)
C3—C2—C1	121.6 (3)	C10—N1—N2	111.6 (2)
C4—C3—C2	120.7 (3)	C10—N1—H1M	123 (3)
C4—C3—H3	119.7	N2—N1—H1M	125 (3)
C2—C3—H3	119.7	C8—N2—N1	103.0 (2)
C5—C4—C3	120.0 (3)	C10—N3—C8	106.8 (2)
C5—C4—C11	120.9 (3)	C10—N3—H4M	131 (3)
C3—C4—C11	119.0 (3)	C8—N3—H4M	122 (3)
C6—C5—C4	119.2 (3)	O3—S1—O1	112.59 (11)
C6—C5—C12	119.2 (3)	O3—S1—O2	113.48 (12)
C4—C5—C12	121.6 (3)	O1—S1—O2	111.99 (11)
C7—C6—C5	120.5 (4)	O3—S1—C1	107.50 (13)
C7—C6—H6	119.7	O1—S1—C1	104.86 (12)
C5—C6—H6	119.7	O2—S1—C1	105.69 (13)
C6—C7—C2	121.4 (3)		
S1—C1—C2—C7	-96.9 (3)	C5—C6—C7—C2	-0.9 (6)
S1—C1—C2—C3	81.1 (3)	C3—C2—C7—C6	1.2 (5)
C7—C2—C3—C4	0.1 (5)	C1—C2—C7—C6	179.3 (3)
C1—C2—C3—C4	-177.9 (3)	N3—C10—N1—N2	0.8 (3)
C2—C3—C4—C5	-1.8 (5)	N3—C8—N2—N1	0.4 (3)
C2—C3—C4—C11	178.0 (2)	C10—N1—N2—C8	-0.7 (3)
C3—C4—C5—C6	2.2 (5)	N1—C10—N3—C8	-0.5 (3)
C11—C4—C5—C6	-177.7 (3)	N2—C8—N3—C10	0.0 (4)
C3—C4—C5—C12	-177.3 (3)	C2—C1—S1—O3	48.8 (2)
C11—C4—C5—C12	2.8 (4)	C2—C1—S1—O1	168.79 (19)
C4—C5—C6—C7	-0.8 (6)	C2—C1—S1—O2	-72.7 (2)
C12—C5—C6—C7	178.7 (3)		

Hydrogen-bond geometry (\AA , $^\circ$)

$D-H\cdots A$	$D-H$	$H\cdots A$	$D\cdots A$	$D-H\cdots A$
N1—H1M \cdots O1 ⁱ	0.85 (4)	1.96 (4)	2.709 (3)	146 (4)
N3—H4M \cdots O2 ⁱⁱ	0.79 (4)	2.08 (4)	2.768 (3)	146 (3)
N3—H4M \cdots O2 ⁱⁱⁱ	0.79 (4)	2.54 (3)	3.089 (3)	128 (3)

Symmetry codes: (i) $x, y+1, z$; (ii) $x-1, y, z$; (iii) $-x, -y, -z$.