

Acta Crystallographica Section E

Structure Reports

Online

ISSN 1600-5368

(E)-4-[(3,5-Dimethylphenyl)iminomethyl]-2-methoxy-3-nitrophenol

Zhong-Ming Yang,* Deng-Cheng Su and Hai-Liang Zhu

School of Life Sciences, Shangdong University of Technology, Zibo 255000, People's Republic of China

Correspondence e-mail: hailiang_zhu@163.com

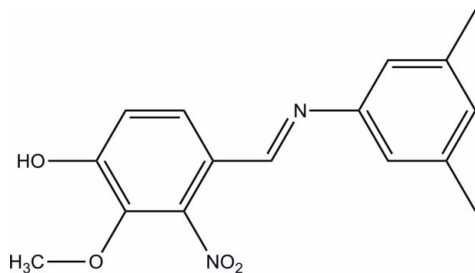
Received 14 December 2011; accepted 18 December 2011

Key indicators: single-crystal X-ray study; $T = 296$ K; mean $\sigma(\text{C}-\text{C}) = 0.003$ Å; R factor = 0.046; wR factor = 0.140; data-to-parameter ratio = 14.5.

The molecule of the title compound, $\text{C}_{16}\text{H}_{16}\text{N}_2\text{O}_4$, exists in the *E* configuration with respect to the central $\text{C}=\text{N}$ double bond. The dihedral angle between the two benzene rings is 2.17 (9) Å. In the crystal, molecules are linked *via* $\text{O}-\text{H}\cdots\text{N}$ hydrogen bonds into chains that propagate along the *b*-axis direction. There is also $\pi-\pi$ stacking of inversion-related molecules, with interplanar spacings of 3.479 (5) Å and ring centroid-centroid distances of 3.876 (4) Å.

Related literature

The title compound is an imine derivative of 4-hydroxy-3-methoxy-2-nitrobenzaldehyde, a vanillin-like compound. For background to the biological activity of vanillin derivatives, see: Javiya *et al.* (2008); Cordano *et al.* (2002). For standard bond lengths, see: Allen *et al.* (1987).



Experimental

Crystal data

$\text{C}_{16}\text{H}_{16}\text{N}_2\text{O}_4$
 $M_r = 300.31$
 Monoclinic, $P2_1/c$
 $a = 8.616$ (9) Å
 $b = 9.690$ (11) Å
 $c = 18.29$ (2) Å
 $\beta = 97.631$ (11)°

$V = 1513$ (3) Å³
 $Z = 4$
 Mo $K\alpha$ radiation
 $\mu = 0.10$ mm⁻¹
 $T = 296$ K
 $0.23 \times 0.21 \times 0.12$ mm

Data collection

Bruker APEXII CCD diffractometer
 Absorption correction: multi-scan (SADABS; Bruker, 2007)
 $T_{\min} = 0.978$, $T_{\max} = 0.989$

8085 measured reflections
 2935 independent reflections
 1699 reflections with $I > 2\sigma(I)$
 $R_{\text{int}} = 0.032$

Refinement

$R[F^2 > 2\sigma(F^2)] = 0.046$
 $wR(F^2) = 0.140$
 $S = 1.04$
 2935 reflections

203 parameters
 H-atom parameters constrained
 $\Delta\rho_{\max} = 0.24$ e Å⁻³
 $\Delta\rho_{\min} = -0.17$ e Å⁻³

Table 1

Hydrogen-bond geometry (Å, °).

$D-\text{H}\cdots A$	$D-\text{H}$	$\text{H}\cdots A$	$D\cdots A$	$D-\text{H}\cdots A$
$\text{O2}-\text{H2}\cdots\text{N2}^i$	0.82	1.95	2.755 (3)	169

Symmetry code: (i) $-x + 1, y - \frac{1}{2}, -z + \frac{1}{2}$.

Data collection: APEX2 (Bruker, 2007); cell refinement: SAINT (Bruker, 2007); data reduction: SAINT; program(s) used to solve structure: SHELXS97 (Sheldrick, 2008); program(s) used to refine structure: SHELXL97 (Sheldrick, 2008); molecular graphics: SHELXTL (Sheldrick, 2008); software used to prepare material for publication: SHELXTL.

Supplementary data and figures for this paper are available from the IUCr electronic archives (Reference: PK2377).

References

- Allen, F. H., Kennard, O., Watson, D. G., Brammer, L., Orpen, A. G. & Taylor, R. (1987). *J. Chem. Soc. Perkin Trans. 2*, pp. S1–19.
 Bruker (2007). APEX2 and SAINT. Bruker AXS Inc., Madison, Wisconsin, USA.
 Cordano, G., Pezoa, J., Munoz, S., Rivera, E., Medina, J., Nunez-Vergara, L. J., Pavani, M., Guerrero, A. & Ferreira, J. (2002). *Eur. J. Pharm. Sci.* **16**, 255–263.
 Javiya, J., Godvani, N., Baluja, S., Parekh, J. & Chanda, S. (2008). *Acta Cienc. Indica Chem.* **34**, 413–417.
 Sheldrick, G. M. (2008). *Acta Cryst.* **A64**, 112–122.

supporting information

Acta Cryst. (2012). E68, o220 [doi:10.1107/S1600536811054407]

(E)-4-[(3,5-Dimethylphenyl)iminomethyl]-2-methoxy-3-nitrophenol**Zhong-Ming Yang, Deng-Cheng Su and Hai-Liang Zhu****S1. Comment**

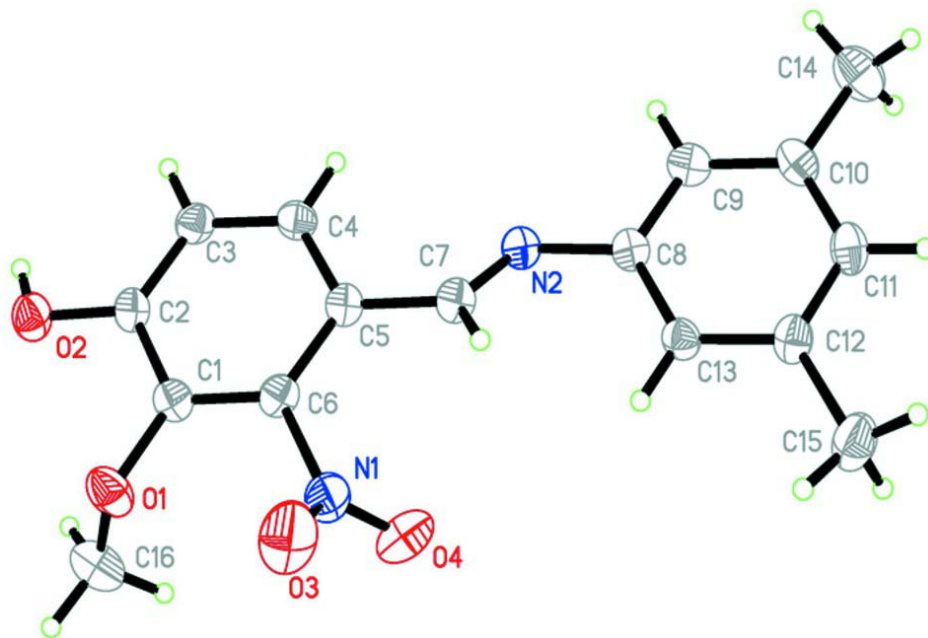
The Schiff base adducts of vanillin with various primary amines show an observable effect on tumours. Amine derivatives of vanillin present similar effects, such as acting as oxidative phosphorylation inhibitors, which prevent ATP synthesis (Cordano *et al.*, 2002). There has been much research interest in vanillin derivatives due to its biological activities (Javiya *et al.* 2008). In this work, we report here the crystal structure of the title compound, (*E*)-4-((3,5-dimethylphenylimino)methyl)-2-methoxy-3-nitrophenol, (I). In (I), all bond lengths are within normal ranges (Allen *et al.*, 1987) (Fig. 1).

S2. Experimental

An equimolar ratio of 4-hydroxy-3-methoxy-2-nitrobenzaldehyde (2 mmol, 394 mg) and 3,5-dimethylaniline (2 mmol, 242 mg) were dissolved in methanol (25 ml). The mixture was stirred for 3 h under a gentle reflux. After allowing the solution to stand in air for two days with methanol slowly evaporating, yellow crystals were deposited, isolated, washed with methanol three times, and dried under vacuum with CaCl₂ as desiccant.

S3. Refinement

All H atoms were positioned geometrically (C—H = 0.96 Å for the aromatic) and were refined as riding, with $U_{\text{iso}}(\text{H}) = 1.2U_{\text{eq}}(\text{C})$ and $U_{\text{iso}}(\text{H}) = 1.2U_{\text{eq}}(\text{N})$.

**Figure 1**

The molecular structure of (I) showing 30% probability displacement ellipsoids.

(E)-4-[(3,5-Dimethylphenyl)iminomethyl]-2-methoxy-3-nitrophenol

Crystal data

$C_{16}H_{16}N_2O_4$

$M_r = 300.31$

Monoclinic, $P2_1/c$

Hall symbol: $-P\ 2ybc$

$a = 8.616\ (9)\ \text{\AA}$

$b = 9.690\ (11)\ \text{\AA}$

$c = 18.29\ (2)\ \text{\AA}$

$\beta = 97.631\ (11)^\circ$

$V = 1513\ (3)\ \text{\AA}^3$

$Z = 4$

$F(000) = 632$

$D_x = 1.318\ \text{Mg m}^{-3}$

Mo $K\alpha$ radiation, $\lambda = 0.71073\ \text{\AA}$

Cell parameters from 2115 reflections

$\theta = 2.4\text{--}26.4^\circ$

$\mu = 0.10\ \text{mm}^{-1}$

$T = 296\ \text{K}$

Column, yellow

$0.23 \times 0.21 \times 0.12\ \text{mm}$

Data collection

Bruker APEXII CCD

diffractometer

Radiation source: fine-focus sealed tube

Graphite monochromator

φ and ω scans

Absorption correction: multi-scan

(*SADABS*; Bruker, 2007)

$T_{\min} = 0.978$, $T_{\max} = 0.989$

8085 measured reflections

2935 independent reflections

1699 reflections with $I > 2\sigma(I)$

$R_{\text{int}} = 0.032$

$\theta_{\max} = 26.0^\circ$, $\theta_{\min} = 2.4^\circ$

$h = -8 \rightarrow 10$

$k = -11 \rightarrow 11$

$l = -16 \rightarrow 22$

Refinement

Refinement on F^2

Least-squares matrix: full

$R[F^2 > 2\sigma(F^2)] = 0.046$

$wR(F^2) = 0.140$

$S = 1.04$

2935 reflections

203 parameters

0 restraints

Primary atom site location: structure-invariant

direct methods

Secondary atom site location: difference Fourier map
 Hydrogen site location: inferred from neighbouring sites
 H-atom parameters constrained

$$w = 1/[\sigma^2(F_o^2) + (0.0684P)^2 + 0.080P]$$

where $P = (F_o^2 + 2F_c^2)/3$
 $(\Delta/\sigma)_{\max} < 0.001$
 $\Delta\rho_{\max} = 0.24 \text{ e } \text{\AA}^{-3}$
 $\Delta\rho_{\min} = -0.17 \text{ e } \text{\AA}^{-3}$

Special details

Geometry. All e.s.d.'s (except the e.s.d. in the dihedral angle between two l.s. planes) are estimated using the full covariance matrix. The cell e.s.d.'s are taken into account individually in the estimation of e.s.d.'s in distances, angles and torsion angles; correlations between e.s.d.'s in cell parameters are only used when they are defined by crystal symmetry. An approximate (isotropic) treatment of cell e.s.d.'s is used for estimating e.s.d.'s involving l.s. planes.

Refinement. Refinement of F^2 against ALL reflections. The weighted R -factor wR and goodness of fit S are based on F^2 , conventional R -factors R are based on F , with F set to zero for negative F^2 . The threshold expression of $F^2 > \sigma(F^2)$ is used only for calculating R -factors(gt) *etc.* and is not relevant to the choice of reflections for refinement. R -factors based on F^2 are statistically about twice as large as those based on F , and R -factors based on ALL data will be even larger.

Fractional atomic coordinates and isotropic or equivalent isotropic displacement parameters (\AA^2)

	<i>x</i>	<i>y</i>	<i>z</i>	$U_{\text{iso}}^*/U_{\text{eq}}$
N1	0.9369 (2)	0.4869 (2)	0.39259 (10)	0.0569 (5)
N2	0.50451 (19)	0.63346 (16)	0.41616 (8)	0.0416 (4)
O1	0.98163 (17)	0.29564 (16)	0.28424 (8)	0.0592 (4)
O2	0.73798 (16)	0.18585 (15)	0.19443 (8)	0.0542 (4)
H2	0.6585	0.1695	0.1658	0.081*
O3	1.0325 (2)	0.4118 (2)	0.42663 (10)	0.0972 (7)
O4	0.9417 (2)	0.61258 (19)	0.39560 (10)	0.0811 (6)
C1	0.8322 (2)	0.33311 (19)	0.29183 (11)	0.0410 (5)
C2	0.7044 (2)	0.27628 (19)	0.24588 (10)	0.0401 (5)
C3	0.5541 (2)	0.3148 (2)	0.25587 (11)	0.0441 (5)
H3	0.4693	0.2778	0.2254	0.053*
C4	0.5275 (2)	0.4069 (2)	0.31015 (11)	0.0428 (5)
H4	0.4251	0.4309	0.3155	0.051*
C5	0.6504 (2)	0.46491 (19)	0.35722 (10)	0.0395 (5)
C6	0.8019 (2)	0.42449 (19)	0.34604 (10)	0.0404 (5)
C7	0.6243 (2)	0.5559 (2)	0.41790 (11)	0.0427 (5)
H7	0.6985	0.5573	0.4598	0.051*
C8	0.4898 (2)	0.72319 (19)	0.47734 (10)	0.0389 (5)
C9	0.3404 (2)	0.7652 (2)	0.48727 (11)	0.0452 (5)
H9	0.2545	0.7324	0.4559	0.054*
C10	0.3177 (2)	0.8561 (2)	0.54361 (12)	0.0473 (6)
C11	0.4476 (3)	0.9040 (2)	0.58903 (11)	0.0492 (6)
H11	0.4334	0.9655	0.6266	0.059*
C12	0.5983 (2)	0.86339 (19)	0.58038 (11)	0.0452 (5)
C13	0.6190 (2)	0.77377 (19)	0.52390 (11)	0.0409 (5)
H13	0.7195	0.7469	0.5168	0.049*
C14	0.1558 (3)	0.9054 (3)	0.55369 (15)	0.0742 (8)
H14A	0.0792	0.8536	0.5220	0.111*
H14B	0.1460	1.0016	0.5414	0.111*
H14C	0.1392	0.8924	0.6041	0.111*

C15	0.7379 (3)	0.9183 (2)	0.63073 (13)	0.0659 (7)
H15A	0.8273	0.8609	0.6269	0.099*
H15B	0.7153	0.9180	0.6807	0.099*
H15C	0.7599	1.0109	0.6165	0.099*
C16	1.0488 (3)	0.3650 (3)	0.22692 (16)	0.0830 (8)
H16A	0.9857	0.3485	0.1804	0.124*
H16B	1.1528	0.3308	0.2251	0.124*
H16C	1.0531	0.4624	0.2368	0.124*

Atomic displacement parameters (Å²)

	U^{11}	U^{22}	U^{33}	U^{12}	U^{13}	U^{23}
N1	0.0502 (12)	0.0687 (13)	0.0484 (12)	0.0024 (10)	-0.0067 (9)	-0.0119 (10)
N2	0.0453 (10)	0.0436 (9)	0.0355 (10)	0.0019 (8)	0.0038 (8)	0.0029 (8)
O1	0.0433 (9)	0.0764 (11)	0.0564 (10)	0.0165 (8)	0.0017 (7)	-0.0015 (8)
O2	0.0520 (9)	0.0614 (9)	0.0468 (10)	0.0059 (8)	-0.0026 (7)	-0.0146 (8)
O3	0.0803 (14)	0.1037 (15)	0.0914 (14)	0.0299 (11)	-0.0490 (11)	-0.0251 (12)
O4	0.0812 (13)	0.0707 (12)	0.0860 (14)	-0.0246 (10)	-0.0088 (10)	-0.0067 (10)
C1	0.0394 (12)	0.0467 (11)	0.0355 (12)	0.0061 (9)	-0.0004 (9)	0.0031 (9)
C2	0.0482 (13)	0.0393 (10)	0.0317 (11)	0.0046 (9)	0.0012 (9)	-0.0001 (9)
C3	0.0433 (12)	0.0484 (12)	0.0390 (12)	-0.0026 (9)	-0.0005 (9)	-0.0031 (10)
C4	0.0380 (12)	0.0462 (11)	0.0436 (13)	0.0011 (9)	0.0029 (10)	0.0034 (10)
C5	0.0449 (13)	0.0393 (10)	0.0332 (11)	0.0033 (9)	0.0016 (9)	0.0023 (9)
C6	0.0415 (12)	0.0442 (11)	0.0324 (11)	0.0007 (9)	-0.0067 (9)	0.0010 (9)
C7	0.0474 (13)	0.0447 (11)	0.0342 (12)	0.0026 (10)	-0.0010 (9)	0.0020 (9)
C8	0.0443 (12)	0.0382 (10)	0.0339 (12)	0.0043 (9)	0.0037 (9)	0.0060 (9)
C9	0.0410 (13)	0.0492 (12)	0.0436 (13)	0.0058 (9)	-0.0014 (10)	0.0100 (10)
C10	0.0481 (13)	0.0490 (12)	0.0460 (13)	0.0147 (10)	0.0102 (11)	0.0100 (11)
C11	0.0618 (16)	0.0423 (11)	0.0438 (13)	0.0138 (10)	0.0080 (11)	-0.0011 (10)
C12	0.0502 (13)	0.0399 (11)	0.0434 (13)	0.0099 (9)	-0.0009 (10)	-0.0005 (10)
C13	0.0362 (12)	0.0418 (10)	0.0443 (12)	0.0075 (8)	0.0039 (9)	0.0000 (9)
C14	0.0547 (16)	0.0839 (18)	0.085 (2)	0.0269 (13)	0.0137 (14)	0.0051 (15)
C15	0.0650 (16)	0.0637 (15)	0.0644 (16)	0.0076 (12)	-0.0091 (13)	-0.0172 (12)
C16	0.0587 (17)	0.101 (2)	0.093 (2)	0.0072 (15)	0.0242 (16)	0.0017 (18)

Geometric parameters (Å, °)

N1—O3	1.208 (2)	C8—C13	1.398 (3)
N1—O4	1.219 (3)	C9—C10	1.389 (3)
N1—C6	1.476 (3)	C9—H9	0.9300
N2—C7	1.274 (3)	C10—C11	1.383 (3)
N2—C8	1.436 (3)	C10—C14	1.509 (3)
O1—C1	1.362 (3)	C11—C12	1.385 (3)
O1—C16	1.431 (3)	C11—H11	0.9300
O2—C2	1.345 (2)	C12—C13	1.379 (3)
O2—H2	0.8200	C12—C15	1.512 (3)
C1—C6	1.380 (3)	C13—H13	0.9300
C1—C2	1.406 (3)	C14—H14A	0.9600

C2—C3	1.383 (3)	C14—H14B	0.9600
C3—C4	1.377 (3)	C14—H14C	0.9600
C3—H3	0.9300	C15—H15A	0.9600
C4—C5	1.392 (3)	C15—H15B	0.9600
C4—H4	0.9300	C15—H15C	0.9600
C5—C6	1.404 (3)	C16—H16A	0.9600
C5—C7	1.458 (3)	C16—H16B	0.9600
C7—H7	0.9300	C16—H16C	0.9600
C8—C9	1.385 (3)		
O3—N1—O4	124.1 (2)	C10—C9—H9	119.7
O3—N1—C6	118.8 (2)	C11—C10—C9	118.4 (2)
O4—N1—C6	117.06 (19)	C11—C10—C14	120.5 (2)
C7—N2—C8	119.54 (17)	C9—C10—C14	121.0 (2)
C1—O1—C16	115.41 (18)	C10—C11—C12	122.2 (2)
C2—O2—H2	109.5	C10—C11—H11	118.9
O1—C1—C6	121.05 (17)	C12—C11—H11	118.9
O1—C1—C2	120.70 (19)	C13—C12—C11	118.75 (19)
C6—C1—C2	118.22 (19)	C13—C12—C15	120.4 (2)
O2—C2—C3	124.08 (18)	C11—C12—C15	120.8 (2)
O2—C2—C1	116.69 (19)	C12—C13—C8	120.32 (19)
C3—C2—C1	119.23 (19)	C12—C13—H13	119.8
C4—C3—C2	121.24 (18)	C8—C13—H13	119.8
C4—C3—H3	119.4	C10—C14—H14A	109.5
C2—C3—H3	119.4	C10—C14—H14B	109.5
C3—C4—C5	121.47 (19)	H14A—C14—H14B	109.5
C3—C4—H4	119.3	C10—C14—H14C	109.5
C5—C4—H4	119.3	H14A—C14—H14C	109.5
C4—C5—C6	116.32 (19)	H14B—C14—H14C	109.5
C4—C5—C7	122.25 (19)	C12—C15—H15A	109.5
C6—C5—C7	121.32 (18)	C12—C15—H15B	109.5
C1—C6—C5	123.51 (18)	H15A—C15—H15B	109.5
C1—C6—N1	117.89 (19)	C12—C15—H15C	109.5
C5—C6—N1	118.56 (19)	H15A—C15—H15C	109.5
N2—C7—C5	122.96 (18)	H15B—C15—H15C	109.5
N2—C7—H7	118.5	O1—C16—H16A	109.5
C5—C7—H7	118.5	O1—C16—H16B	109.5
C9—C8—C13	119.75 (19)	H16A—C16—H16B	109.5
C9—C8—N2	117.40 (18)	O1—C16—H16C	109.5
C13—C8—N2	122.77 (18)	H16A—C16—H16C	109.5
C8—C9—C10	120.6 (2)	H16B—C16—H16C	109.5
C8—C9—H9	119.7		

Hydrogen-bond geometry (\AA , $^\circ$)

$D-H\cdots A$	$D-H$	$H\cdots A$	$D\cdots A$	$D-H\cdots A$
---------------	-------	-------------	-------------	---------------

O2—H2 \cdots N2 ⁱ	0.82	1.95	2.755 (3)	169
--------------------------------	------	------	-----------	-----

Symmetry code: (i) $-x+1, y-1/2, -z+1/2$.