

Acta Crystallographica Section E

## Structure Reports

Online

ISSN 1600-5368

## 2-Chloro-*N*-(4-chloro-3-iodophenyl)-4-(methylsulfonyl)benzamide

Dao-Cai Wang, Hang Song, Chang Yang, Wen-Cai Huang and Shun Yao\*

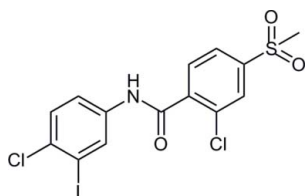
 Department of Pharmaceutical and Biological Engineering, College of Chemical Engineering, Sichuan University, Chengdu 610065, People's Republic of China  
 Correspondence e-mail: cusack@scu.edu.cn

Received 10 December 2011; accepted 13 December 2011

 Key indicators: single-crystal X-ray study;  $T = 290$  K; mean  $\sigma(\text{C}-\text{C}) = 0.005$  Å;  $R$  factor = 0.028;  $wR$  factor = 0.067; data-to-parameter ratio = 16.6.

 In the title compound,  $\text{C}_{14}\text{H}_{10}\text{Cl}_2\text{INO}_3\text{S}$ , the dihedral angle between the benzene rings is  $52.13$  ( $10$ )°. In the crystal, the components are linked by pairs of  $\text{N}-\text{H}\cdots\text{O}(\text{sulfonyl})$  hydrogen bonds into centrosymmetric dimers.

## Related literature

 For background to benzamides, see: Castanedo *et al.* (2010); Tremblay *et al.* (2010); Mahindroo *et al.* (2010). For the preparation of the title compound, see: Robarge *et al.* (2009).


## Experimental

## Crystal data

 $\text{C}_{14}\text{H}_{10}\text{Cl}_2\text{INO}_3\text{S}$ 
 $M_r = 470.09$ 

 Triclinic,  $P\bar{1}$ 
 $a = 8.8694$  (6) Å

 $b = 10.3837$  (8) Å

 $c = 10.4288$  (5) Å

 $\alpha = 103.862$  (5)°

 $\beta = 96.452$  (5)°

 $\gamma = 114.949$  (7)°

 $V = 820.25$  (9) Å<sup>3</sup>
 $Z = 2$ 

 Mo  $K\alpha$  radiation

 $\mu = 2.41$  mm<sup>-1</sup>
 $T = 290$  K

 $0.30 \times 0.30 \times 0.25$  mm

## Data collection

Oxford Diffraction Xcalibur Eos diffractometer

 Absorption correction: multi-scan (*CrysAlis PRO*; Oxford Diffraction, 2006)

 $T_{\min} = 0.887$ ,  $T_{\max} = 1.000$ 

6770 measured reflections

3323 independent reflections

 2957 reflections with  $I > 2\sigma(I)$ 
 $R_{\text{int}} = 0.020$ 

## Refinement

 $R[F^2 > 2\sigma(F^2)] = 0.028$ 
 $wR(F^2) = 0.067$ 
 $S = 1.07$ 

3323 reflections

200 parameters

H-atom parameters constrained

 $\Delta\rho_{\max} = 0.43$  e Å<sup>-3</sup>
 $\Delta\rho_{\min} = -0.55$  e Å<sup>-3</sup>

Table 1

Hydrogen-bond geometry (Å, °).

$D-H\cdots A$	$D-H$	$H\cdots A$	$D\cdots A$	$D-H\cdots A$
$\text{N1}-\text{H1}\cdots\text{O2}^i$	0.86	2.15	2.991 (3)	167

 Symmetry code: (i)  $-x, -y + 1, -z + 3$ .

 Data collection: *CrysAlis PRO* (Oxford Diffraction, 2006); cell refinement: *CrysAlis PRO*; data reduction: *CrysAlis PRO*; program(s) used to solve structure: *SHELXS97* (Sheldrick, 2008); program(s) used to refine structure: *SHELXL97* (Sheldrick, 2008); molecular graphics: *OLEX2* (Dolomanov *et al.*, 2009) and *Mercury* (Macrae *et al.*, 2006); software used to prepare material for publication: *OLEX2*.

We thank the Analytical and Testing Center of Sichuan University for the X-ray measurements.

Supplementary data and figures for this paper are available from the IUCr electronic archives (Reference: TK5034).

## References

- Castanedo, G. M., *et al.* (2010). *Bioorg. Med. Chem. Lett.* **20**, 6748–6753.
- Dolomanov, O. V., Bourhis, L. J., Gildea, R. J., Howard, J. A. K. & Puschmann, H. (2009). *J. Appl. Cryst.* **42**, 339–341.
- Macrae, C. F., Edgington, P. R., McCabe, P., Pidcock, E., Shields, G. P., Taylor, R., Towler, M. & van de Streek, J. (2006). *J. Appl. Cryst.* **39**, 453–457.
- Mahindroo, N., Connelly, M. C., PUNCHIHEWA, C., Yang, L., Yan, B. & Fujii, N. (2010). *Bioorg. Med. Chem.* **18**, 4801–4811.
- Oxford Diffraction (2006). *CrysAlis PRO*. Oxford Diffraction Ltd, Yarnton, England.
- Robarge, K. D., *et al.* (2009). *Bioorg. Med. Chem. Lett.* **19**, 5576–5581.
- Sheldrick, G. M. (2008). *Acta Cryst.* **A64**, 112–122.
- Tremblay, M. R., McGovern, K., Read, M. A. & Castro, A. C. (2010). *Curr. Opin. Chem. Biol.* **14**, 428–435.

## supporting information

*Acta Cryst.* (2012). E68, o189 [doi:10.1107/S1600536811053633]

## 2-Chloro-*N*-(4-chloro-3-iodophenyl)-4-(methylsulfonyl)benzamide

Dao-Cai Wang, Hang Song, Chang Yang, Wen-Cai Huang and Shun Yao

### S1. Comment

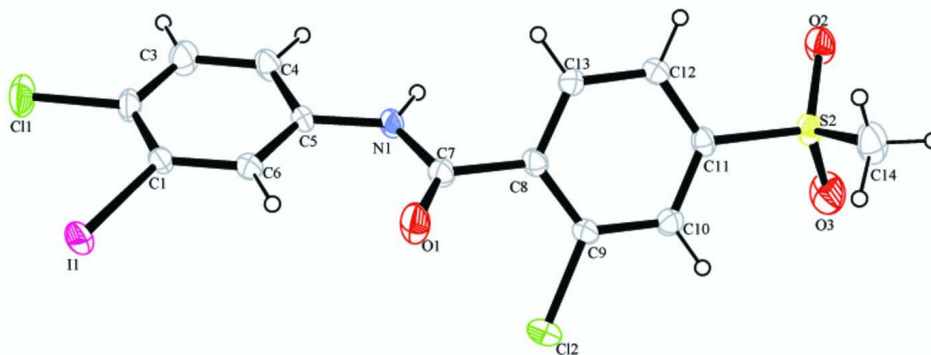
The benzamide moiety is the constituent of many biologically significant compounds including anticancer compounds (Castanedo *et al.*, 2010; Tremblay *et al.*, 2010; Mahindroo *et al.*, 2010). The title compound is one of the key intermediates in our synthetic investigations of anticancer drugs. In this paper, we synthesized the title compound and report its crystal structure, Fig. 1. The dihedral angle between the two benzene rings is 52.13 (10)°. In the crystal, the molecules are connected *via* intermolecular N—H···O hydrogen bonds to form a centrosymmetric dimer, in which the amide H atom acts as a donor and the sulfonyl-O atom act as an acceptor, Table 1.

### S2. Experimental

The title compound was prepared by a method similar to that of Robarge *et al.* (2009). Crystals were obtained by slow evaporation from its methanol-acetic acid (5:2) solution.

### S3. Refinement

All H atoms were positioned geometrically (C—H = 0.93–0.96 Å; N—H = 0.86 Å) and allowed to ride on their parent atoms, with  $U_{\text{iso}}(\text{H}) = 1.2U_{\text{eq}}(\text{parent})$ .



**Figure 1**

The molecular structure of the title compound, with displacement ellipsoids drawn at the 30% probability level.

## 2-Chloro-*N*-(4-chloro-3-iodophenyl)-4-(methylsulfonyl)benzamide

### Crystal data

$\text{C}_{14}\text{H}_{10}\text{Cl}_2\text{INO}_3\text{S}$

$M_r = 470.09$

Triclinic,  $P\bar{1}$

Hall symbol: -P 1

$a = 8.8694$  (6) Å

$b = 10.3837$  (8) Å

$c = 10.4288$  (5) Å

$\alpha = 103.862$  (5)°

$\beta = 96.452$  (5)°

$\gamma = 114.949$  (7)°

$V = 820.25 (9) \text{ \AA}^3$   
 $Z = 2$   
 $F(000) = 456$   
 $D_x = 1.903 \text{ Mg m}^{-3}$   
 Mo  $K\alpha$  radiation,  $\lambda = 0.7107 \text{ \AA}$   
 Cell parameters from 2872 reflections

$\theta = 2.9\text{--}26.3^\circ$   
 $\mu = 2.41 \text{ mm}^{-1}$   
 $T = 290 \text{ K}$   
 Block, colourless  
 $0.30 \times 0.30 \times 0.25 \text{ mm}$

*Data collection*

Oxford Diffraction Xcalibur Eos  
 diffractometer  
 Radiation source: Enhance (Mo) X-ray Source  
 Graphite monochromator  
 Detector resolution:  $16.0874 \text{ pixels mm}^{-1}$   
 $\omega$  scans  
 Absorption correction: multi-scan  
 (*CrysAlis PRO*; Oxford Diffraction, 2006)  
 $T_{\min} = 0.887$ ,  $T_{\max} = 1.000$

6770 measured reflections  
 3323 independent reflections  
 2957 reflections with  $I > 2\sigma(I)$   
 $R_{\text{int}} = 0.020$   
 $\theta_{\max} = 26.4^\circ$ ,  $\theta_{\min} = 2.9^\circ$   
 $h = -11 \rightarrow 11$   
 $k = -12 \rightarrow 12$   
 $l = -12 \rightarrow 13$

*Refinement*

Refinement on  $F^2$   
 Least-squares matrix: full  
 $R[F^2 > 2\sigma(F^2)] = 0.028$   
 $wR(F^2) = 0.067$   
 $S = 1.07$   
 3323 reflections  
 200 parameters  
 0 restraints  
 Primary atom site location: structure-invariant  
 direct methods

Secondary atom site location: difference Fourier  
 map  
 Hydrogen site location: inferred from  
 neighbouring sites  
 H-atom parameters constrained  
 $w = 1/[\sigma^2(F_o^2) + (0.0257P)^2 + 0.4057P]$   
 where  $P = (F_o^2 + 2F_c^2)/3$   
 $(\Delta/\sigma)_{\max} = 0.001$   
 $\Delta\rho_{\max} = 0.43 \text{ e \AA}^{-3}$   
 $\Delta\rho_{\min} = -0.55 \text{ e \AA}^{-3}$

*Special details*

**Geometry.** All e.s.d.'s (except the e.s.d. in the dihedral angle between two l.s. planes) are estimated using the full covariance matrix. The cell e.s.d.'s are taken into account individually in the estimation of e.s.d.'s in distances, angles and torsion angles; correlations between e.s.d.'s in cell parameters are only used when they are defined by crystal symmetry. An approximate (isotropic) treatment of cell e.s.d.'s is used for estimating e.s.d.'s involving l.s. planes.

**Refinement.** Refinement of  $F^2$  against ALL reflections. The weighted  $R$ -factor  $wR$  and goodness of fit  $S$  are based on  $F^2$ , conventional  $R$ -factors  $R$  are based on  $F$ , with  $F$  set to zero for negative  $F^2$ . The threshold expression of  $F^2 > \sigma(F^2)$  is used only for calculating  $R$ -factors(gt) *etc.* and is not relevant to the choice of reflections for refinement.  $R$ -factors based on  $F^2$  are statistically about twice as large as those based on  $F$ , and  $R$ -factors based on ALL data will be even larger.

*Fractional atomic coordinates and isotropic or equivalent isotropic displacement parameters ( $\text{\AA}^2$ )*

	$x$	$y$	$z$	$U_{\text{iso}}^*/U_{\text{eq}}$
II	0.61447 (3)	0.68561 (3)	0.77089 (2)	0.04648 (9)
Cl1	0.29725 (14)	0.32782 (12)	0.59427 (9)	0.0627 (3)
Cl2	0.29306 (15)	0.99624 (11)	1.34350 (10)	0.0603 (3)
S2	0.11153 (10)	0.80692 (9)	1.76536 (8)	0.03759 (19)
O1	0.4697 (3)	0.8156 (3)	1.2278 (2)	0.0620 (8)
O2	0.0367 (3)	0.6656 (3)	1.7893 (2)	0.0536 (7)
O3	0.0121 (4)	0.8840 (4)	1.7587 (3)	0.0676 (8)
N1	0.2439 (3)	0.5816 (3)	1.1495 (2)	0.0344 (6)
H1	0.1576	0.5214	1.1721	0.041*
C1	0.4083 (4)	0.5502 (4)	0.8367 (3)	0.0328 (7)

C2	0.2898 (4)	0.4068 (4)	0.7585 (3)	0.0390 (8)
C3	0.1603 (4)	0.3219 (4)	0.8106 (3)	0.0478 (9)
H3	0.0821	0.2240	0.7588	0.057*
C4	0.1467 (4)	0.3817 (4)	0.9391 (3)	0.0412 (8)
H4	0.0578	0.3246	0.9729	0.049*
C5	0.2643 (4)	0.5261 (3)	1.0182 (3)	0.0303 (6)
C6	0.3978 (4)	0.6101 (3)	0.9675 (3)	0.0326 (7)
H6	0.4798	0.7061	1.0210	0.039*
C7	0.3431 (4)	0.7173 (4)	1.2433 (3)	0.0370 (7)
C8	0.2843 (4)	0.7407 (3)	1.3728 (3)	0.0315 (7)
C9	0.2612 (4)	0.8646 (3)	1.4266 (3)	0.0346 (7)
C10	0.2081 (4)	0.8860 (3)	1.5459 (3)	0.0346 (7)
H10	0.1917	0.9691	1.5806	0.042*
C11	0.1800 (3)	0.7808 (3)	1.6127 (3)	0.0307 (6)
C12	0.2046 (4)	0.6571 (3)	1.5633 (3)	0.0332 (7)
H12	0.1865	0.5880	1.6099	0.040*
C13	0.2566 (4)	0.6382 (4)	1.4433 (3)	0.0336 (7)
H13	0.2734	0.5553	1.4090	0.040*
C14	0.3027 (5)	0.9225 (5)	1.8925 (3)	0.0601 (11)
H14A	0.2762	0.9474	1.9789	0.090*
H14B	0.3667	1.0126	1.8717	0.090*
H14C	0.3697	0.8705	1.8963	0.090*

*Atomic displacement parameters (Å<sup>2</sup>)*

	$U^{11}$	$U^{22}$	$U^{33}$	$U^{12}$	$U^{13}$	$U^{23}$
II	0.05672 (15)	0.05233 (16)	0.04928 (15)	0.02995 (12)	0.03477 (12)	0.02942 (12)
Cl1	0.0823 (7)	0.0685 (7)	0.0327 (4)	0.0349 (6)	0.0224 (5)	0.0051 (4)
Cl2	0.0951 (7)	0.0446 (5)	0.0564 (5)	0.0341 (5)	0.0333 (5)	0.0322 (4)
S2	0.0338 (4)	0.0384 (4)	0.0326 (4)	0.0090 (3)	0.0162 (3)	0.0088 (3)
O1	0.0644 (16)	0.0378 (14)	0.0517 (15)	-0.0044 (13)	0.0346 (13)	0.0034 (12)
O2	0.0539 (14)	0.0436 (15)	0.0454 (13)	0.0031 (12)	0.0266 (12)	0.0140 (11)
O3	0.0703 (18)	0.094 (2)	0.0684 (18)	0.0555 (18)	0.0411 (15)	0.0315 (16)
N1	0.0369 (13)	0.0297 (14)	0.0319 (13)	0.0082 (11)	0.0193 (11)	0.0108 (11)
C1	0.0395 (16)	0.0390 (18)	0.0308 (15)	0.0225 (14)	0.0159 (13)	0.0181 (14)
C2	0.0490 (18)	0.048 (2)	0.0240 (15)	0.0270 (17)	0.0120 (14)	0.0086 (14)
C3	0.0491 (19)	0.040 (2)	0.0351 (18)	0.0103 (17)	0.0068 (15)	0.0020 (15)
C4	0.0386 (16)	0.0398 (19)	0.0350 (17)	0.0075 (15)	0.0120 (14)	0.0134 (14)
C5	0.0358 (15)	0.0330 (16)	0.0258 (14)	0.0157 (13)	0.0129 (12)	0.0134 (12)
C6	0.0356 (15)	0.0292 (16)	0.0325 (15)	0.0128 (13)	0.0116 (13)	0.0117 (13)
C7	0.0403 (17)	0.0300 (17)	0.0345 (16)	0.0089 (14)	0.0156 (14)	0.0107 (14)
C8	0.0283 (14)	0.0296 (16)	0.0300 (15)	0.0065 (13)	0.0098 (12)	0.0104 (13)
C9	0.0421 (16)	0.0282 (16)	0.0324 (15)	0.0126 (14)	0.0123 (14)	0.0135 (13)
C10	0.0367 (16)	0.0297 (16)	0.0345 (16)	0.0132 (14)	0.0105 (13)	0.0083 (13)
C11	0.0267 (13)	0.0341 (17)	0.0260 (14)	0.0092 (13)	0.0078 (12)	0.0092 (12)
C12	0.0357 (15)	0.0314 (17)	0.0337 (15)	0.0135 (13)	0.0122 (13)	0.0147 (13)
C13	0.0390 (16)	0.0320 (17)	0.0332 (16)	0.0178 (14)	0.0142 (13)	0.0112 (13)
C14	0.056 (2)	0.051 (2)	0.0362 (19)	-0.0018 (19)	0.0054 (17)	0.0050 (17)

*Geometric parameters (Å, °)*

I1—C1	2.090 (3)	C4—C5	1.382 (4)
Cl1—C2	1.735 (3)	C5—C6	1.391 (4)
Cl2—C9	1.731 (3)	C6—H6	0.9300
S2—O2	1.431 (3)	C7—C8	1.504 (4)
S2—O3	1.426 (3)	C8—C9	1.384 (4)
S2—C11	1.769 (3)	C8—C13	1.388 (4)
S2—C14	1.757 (4)	C9—C10	1.381 (4)
O1—C7	1.218 (4)	C10—H10	0.9300
N1—H1	0.8600	C10—C11	1.383 (4)
N1—C5	1.416 (4)	C11—C12	1.380 (4)
N1—C7	1.348 (4)	C12—H12	0.9300
C1—C2	1.375 (5)	C12—C13	1.381 (4)
C1—C6	1.388 (4)	C13—H13	0.9300
C2—C3	1.381 (5)	C14—H14A	0.9600
C3—H3	0.9300	C14—H14B	0.9600
C3—C4	1.378 (4)	C14—H14C	0.9600
C4—H4	0.9300		
O2—S2—C11	107.98 (15)	O1—C7—N1	124.5 (3)
O2—S2—C14	106.74 (19)	O1—C7—C8	121.2 (3)
O3—S2—O2	118.76 (18)	N1—C7—C8	114.3 (2)
O3—S2—C11	108.53 (16)	C9—C8—C7	121.8 (3)
O3—S2—C14	109.7 (2)	C9—C8—C13	118.5 (3)
C14—S2—C11	104.21 (16)	C13—C8—C7	119.7 (3)
C5—N1—H1	116.0	C8—C9—Cl2	120.7 (2)
C7—N1—H1	116.0	C10—C9—Cl2	117.7 (3)
C7—N1—C5	128.0 (2)	C10—C9—C8	121.6 (3)
C2—C1—H1	123.1 (2)	C9—C10—H10	120.8
C2—C1—C6	120.3 (3)	C9—C10—C11	118.4 (3)
C6—C1—H1	116.6 (2)	C11—C10—H10	120.8
C1—C2—Cl1	121.8 (2)	C10—C11—S2	118.7 (2)
C1—C2—C3	119.8 (3)	C12—C11—S2	119.6 (2)
C3—C2—Cl1	118.3 (3)	C12—C11—C10	121.7 (3)
C2—C3—H3	119.9	C11—C12—H12	120.7
C4—C3—C2	120.3 (3)	C11—C12—C13	118.6 (3)
C4—C3—H3	119.9	C13—C12—H12	120.7
C3—C4—H4	119.8	C8—C13—H13	119.4
C3—C4—C5	120.4 (3)	C12—C13—C8	121.3 (3)
C5—C4—H4	119.8	C12—C13—H13	119.4
C4—C5—N1	117.9 (3)	S2—C14—H14A	109.5
C4—C5—C6	119.4 (3)	S2—C14—H14B	109.5
C6—C5—N1	122.7 (3)	S2—C14—H14C	109.5
C1—C6—C5	119.8 (3)	H14A—C14—H14B	109.5
C1—C6—H6	120.1	H14A—C14—H14C	109.5
C5—C6—H6	120.1	H14B—C14—H14C	109.5

I1—C1—C2—C11	-2.5 (4)	C4—C5—C6—C1	2.2 (5)
I1—C1—C2—C3	177.7 (3)	C5—N1—C7—O1	0.1 (6)
I1—C1—C6—C5	-179.8 (2)	C5—N1—C7—C8	179.6 (3)
C11—C2—C3—C4	-178.1 (3)	C6—C1—C2—C11	179.6 (2)
C12—C9—C10—C11	179.2 (2)	C6—C1—C2—C3	-0.2 (5)
S2—C11—C12—C13	179.4 (2)	C7—N1—C5—C4	179.5 (3)
O1—C7—C8—C9	51.1 (5)	C7—N1—C5—C6	0.2 (5)
O1—C7—C8—C13	-127.0 (4)	C7—C8—C9—C12	2.0 (4)
O2—S2—C11—C10	160.6 (2)	C7—C8—C9—C10	-179.6 (3)
O2—S2—C11—C12	-19.6 (3)	C7—C8—C13—C12	179.2 (3)
O3—S2—C11—C10	30.7 (3)	C8—C9—C10—C11	0.8 (5)
O3—S2—C11—C12	-149.6 (3)	C9—C8—C13—C12	1.0 (4)
N1—C5—C6—C1	-178.5 (3)	C9—C10—C11—S2	-179.9 (2)
N1—C7—C8—C9	-128.4 (3)	C9—C10—C11—C12	0.4 (4)
N1—C7—C8—C13	53.5 (4)	C10—C11—C12—C13	-0.8 (4)
C1—C2—C3—C4	1.8 (6)	C11—C12—C13—C8	0.1 (4)
C2—C1—C6—C5	-1.7 (5)	C13—C8—C9—C12	-179.8 (2)
C2—C3—C4—C5	-1.3 (6)	C13—C8—C9—C10	-1.5 (4)
C3—C4—C5—N1	-180.0 (3)	C14—S2—C11—C10	-86.2 (3)
C3—C4—C5—C6	-0.7 (5)	C14—S2—C11—C12	93.6 (3)

*Hydrogen-bond geometry (Å, °)*

<i>D</i> —H... <i>A</i>	<i>D</i> —H	H... <i>A</i>	<i>D</i> ... <i>A</i>	<i>D</i> —H... <i>A</i>
N1—H1...O2 <sup>i</sup>	0.86	2.15	2.991 (3)	167

Symmetry code: (i)  $-x, -y+1, -z+3$ .