

Acta Crystallographica Section E

Structure Reports

Online

ISSN 1600-5368

3-(Prop-2-en-1-yl)-2-sulfanylidene-1,2,3,4-tetrahydroquinazolin-4-one

Rashad Al-Salahi,^a Mohamed Al-Omar,^a Mohamed Marzouk^a and Seik Weng Ng^{b,c*}

^aDepartment of Pharmaceutical Chemistry, College of Pharmacy, King Saud University, Riyadh 11451, Saudi Arabia, ^bDepartment of Chemistry, University of Malaya, 50603 Kuala Lumpur, Malaysia, and ^cChemistry Department, Faculty of Science, King Abdulaziz University, PO Box 80203 Jeddah, Saudi Arabia
Correspondence e-mail: seikweng@um.edu.my

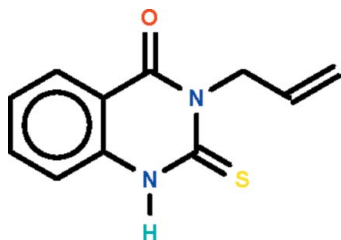
Received 10 May 2012; accepted 14 May 2012

Key indicators: single-crystal X-ray study; $T = 294$ K; mean $\sigma(\text{C}-\text{C}) = 0.002$ Å; R factor = 0.037; wR factor = 0.108; data-to-parameter ratio = 15.2.

The tetrahydroquinazoline fused-ring system of the title compound, $\text{C}_{11}\text{H}_{10}\text{N}_2\text{OS}$, is approximately planar (r.m.s. deviation = 0.019 Å). In the crystal, adjacent molecules are linked by $\text{N}-\text{H}\cdots\text{O}$ hydrogen bonds, forming a chain running along the b axis.

Related literature

For the synthesis, see: Shiau *et al.* (1990); Vassilev & Vassilev (2007).



Experimental

Crystal data

$\text{C}_{11}\text{H}_{10}\text{N}_2\text{OS}$
 $M_r = 218.27$
Monoclinic, $P2_1/c$
 $a = 8.9823$ (3) Å

$b = 13.7271$ (3) Å
 $c = 8.3137$ (2) Å
 $\beta = 92.882$ (3)°
 $V = 1023.79$ (5) Å³

$Z = 4$
Cu $K\alpha$ radiation
 $\mu = 2.59$ mm⁻¹

$T = 294$ K
 $0.30 \times 0.30 \times 0.03$ mm

Data collection

Agilent SuperNova Dual diffractometer with an Atlas detector
Absorption correction: multi-scan (*CrysAlis PRO*; Agilent, 2012)
 $T_{\min} = 0.511$, $T_{\max} = 0.927$

4913 measured reflections
2128 independent reflections
1855 reflections with $I > 2\sigma(I)$
 $R_{\text{int}} = 0.023$

Refinement

$R[F^2 > 2\sigma(F^2)] = 0.037$
 $wR(F^2) = 0.108$
 $S = 1.06$
2128 reflections
140 parameters
1 restraint

H atoms treated by a mixture of independent and constrained refinement
 $\Delta\rho_{\text{max}} = 0.23$ e Å⁻³
 $\Delta\rho_{\text{min}} = -0.38$ e Å⁻³

Table 1

Hydrogen-bond geometry (Å, °).

$D-\text{H}\cdots A$	$D-\text{H}$	$\text{H}\cdots A$	$D\cdots A$	$D-\text{H}\cdots A$
$\text{N1}-\text{H1}\cdots\text{O1}^i$	0.87 (1)	2.15 (1)	2.977 (2)	160 (2)

Symmetry code: (i) $-x + 1, y + \frac{1}{2}, -z + \frac{1}{2}$.

Data collection: *CrysAlis PRO* (Agilent, 2012); cell refinement: *CrysAlis PRO*; data reduction: *CrysAlis PRO*; program(s) used to solve structure: *SHELXS97* (Sheldrick, 2008); program(s) used to refine structure: *SHELXL97* (Sheldrick, 2008); molecular graphics: *X-SEED* (Barbour, 2001); software used to prepare material for publication: *publCIF* (Westrip, 2010).

We thank the Research Center of the College of Pharmacy College and Deanship of Scientific Research of King Saud University, and the Ministry of Higher Education of Malaysia (grant No. UM.C/HIR/MOHE/SC/12) for supporting this study.

Supplementary data and figures for this paper are available from the IUCr electronic archives (Reference: BT5919).

References

- Agilent (2012). *CrysAlis PRO*. Agilent Technologies, Yarnton, England.
Barbour, L. J. (2001). *J. Supramol. Chem.* **1**, 189–191.
Sheldrick, G. M. (2008). *Acta Cryst.* **A64**, 112–122.
Shiau, C. Y., Chern, J. W., Liu, K. C., Chan, C. H., Yen, M. H., Cheng, M. C. & Wang, Y. (1990). *J. Heterocycl. Chem.* **27**, 1467–1472.
Vassilev, G. N. & Vassilev, N. G. (2007). *Oxid. Commun.* **30**, 228–235.
Westrip, S. P. (2010). *J. Appl. Cryst.* **43**, 920–925.

supporting information

Acta Cryst. (2012). E68, o1810 [doi:10.1107/S1600536812021800]

3-(Prop-2-en-1-yl)-2-sulfanylidene-1,2,3,4-tetrahydroquinazolin-4-one

Rashad Al-Salahi, Mohamed Al-Omar, Mohamed Marzouk and Seik Weng Ng

S1. Comment

The compound, 3-benzyl-8-methoxy-2-sulfanylidene-1,2,3,4-tetrahydroquinazolin-4-one, was previously synthesized for a study of its antimicrobial activity. The related 2-sulfanylidene-1,2,3,4-tetrahydroquinazolin-4-one (Scheme I) exhibits cytokinin activity (Vassilev & Vassilev, 2007). The synthesis described in the present study is a more straightforward procedure than those previously reported (Shiau *et al.*, 1990; Vassilev & Vassilev, 2007). The tetrahydroquinazoline fused-ring of C₁₁H₁₀N₂OS is planar (Fig. 1). Adjacent molecules are linked by an N–H···O hydrogen to form a chain running along the *b*-axis of the monoclinic unit cell (Table 1).

S2. Experimental

Allyl isothiocyanate (10 mmol, 0.99 g), 2-amino-5-methylbenzoic acid (10 mmol, 1.51 g) and triethylamine (5 mmol, 0.51 g) in ethanol (30 ml) was heated for two hours. The mixture was poured into ice-cold water. The solid was collected and recrystallized from ethanol to give colorless crystals.

S3. Refinement

All H-atom were located in a difference Fourier map. Carbon-bound H-atoms were placed in calculated positions [C–H 0.93 to 0.97 Å, $U_{\text{iso}}(\text{H}) 1.2U_{\text{eq}}(\text{C})$] and were included in the refinement in the riding model approximation.

The amino H-atom was refined isotropically with a distance restraint of N–H 0.88±0.01 Å.

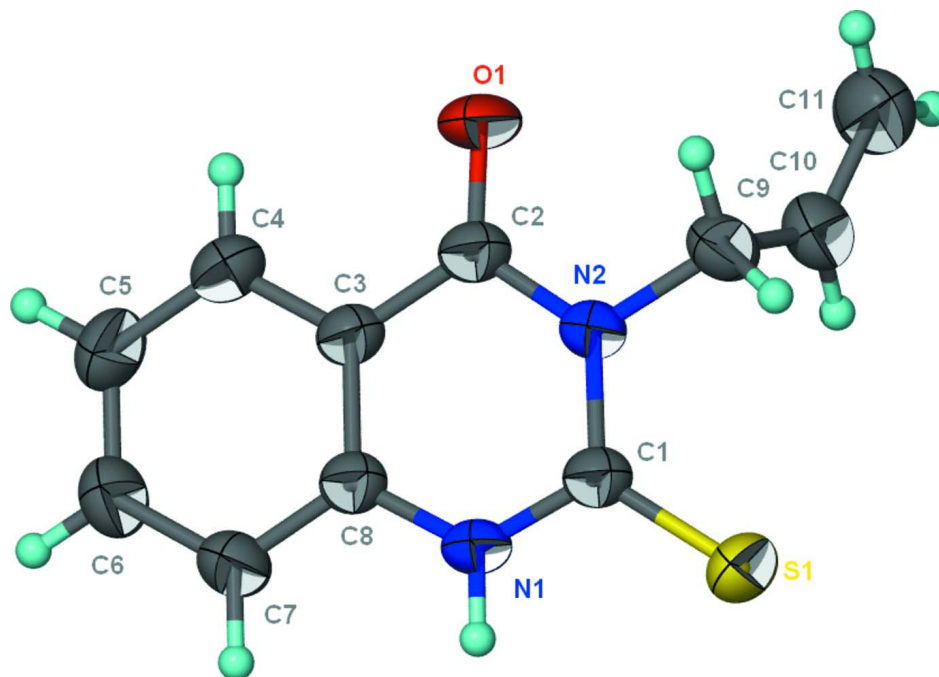
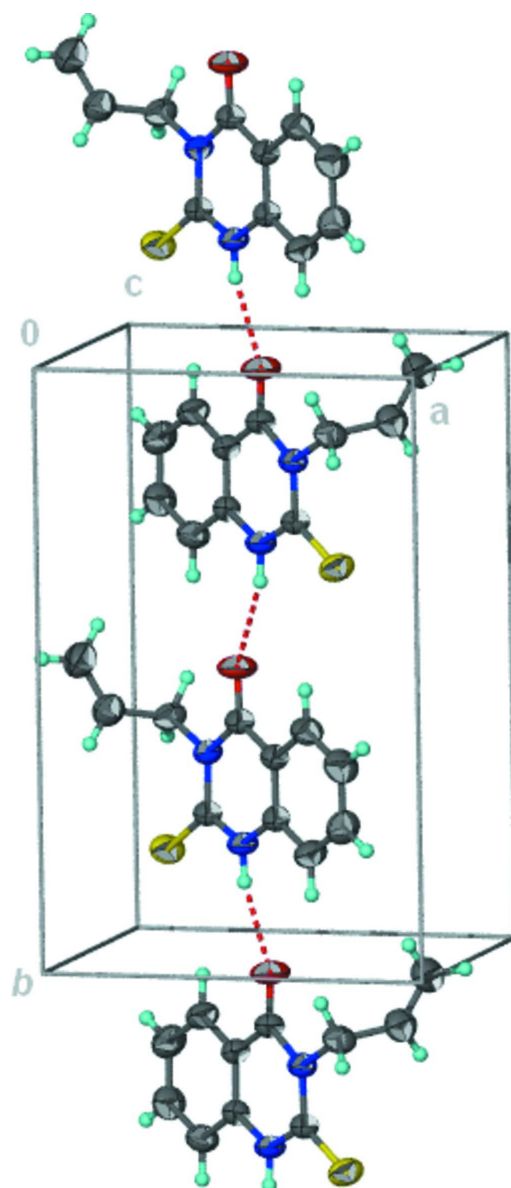


Figure 1

Anisotropic displacement ellipsoid plot (Barbour, 2001) of C₁₁H₁₀N₂OS at the 70% probability level; hydrogen atoms are drawn as spheres of arbitrary radius.

**Figure 2**

Hydrogen-bond chain structure.

3-(Prop-2-en-1-yl)-2-sulfanylidene-1,2,3,4-tetrahydroquinazolin-4-one*Crystal data* $C_{11}H_{10}N_2OS$ $M_r = 218.27$ Monoclinic, $P2_1/c$ Hall symbol: $-P\ 2_1/c$ $a = 8.9823\ (3)\ \text{\AA}$ $b = 13.7271\ (3)\ \text{\AA}$ $c = 8.3137\ (2)\ \text{\AA}$ $\beta = 92.882\ (3)^\circ$ $V = 1023.79\ (5)\ \text{\AA}^3$ $Z = 4$ $F(000) = 456$ $D_x = 1.416\ \text{Mg m}^{-3}$ Cu $K\alpha$ radiation, $\lambda = 1.54184\ \text{\AA}$

Cell parameters from 2303 reflections

 $\theta = 3.2\text{--}76.4^\circ$ $\mu = 2.59\ \text{mm}^{-1}$ $T = 294\ \text{K}$

Prism, colorless

 $0.30 \times 0.30 \times 0.03\ \text{mm}$

Data collection

Agilent SuperNova Dual
 diffractometer with an Atlas detector
 Radiation source: SuperNova (Cu) X-ray
 Source
 Mirror monochromator
 Detector resolution: 10.4041 pixels mm⁻¹
 ω scan
 Absorption correction: multi-scan
 (CrysAlis PRO; Agilent, 2012)

$T_{\min} = 0.511$, $T_{\max} = 0.927$
 4913 measured reflections
 2128 independent reflections
 1855 reflections with $I > 2\sigma(I)$
 $R_{\text{int}} = 0.023$
 $\theta_{\max} = 76.6^\circ$, $\theta_{\min} = 5.9^\circ$
 $h = -11 \rightarrow 10$
 $k = -17 \rightarrow 10$
 $l = -10 \rightarrow 8$

Refinement

Refinement on F^2
 Least-squares matrix: full
 $R[F^2 > 2\sigma(F^2)] = 0.037$
 $wR(F^2) = 0.108$
 $S = 1.06$
 2128 reflections
 140 parameters
 1 restraint
 Primary atom site location: structure-invariant
 direct methods

Secondary atom site location: difference Fourier
 map
 Hydrogen site location: inferred from
 neighbouring sites
 H atoms treated by a mixture of independent
 and constrained refinement
 $w = 1/[\sigma^2(F_o^2) + (0.0596P)^2 + 0.1451P]$
 where $P = (F_o^2 + 2F_c^2)/3$
 $(\Delta/\sigma)_{\max} = 0.001$
 $\Delta\rho_{\max} = 0.23 \text{ e } \text{\AA}^{-3}$
 $\Delta\rho_{\min} = -0.38 \text{ e } \text{\AA}^{-3}$

Fractional atomic coordinates and isotropic or equivalent isotropic displacement parameters (\AA^2)

	<i>x</i>	<i>y</i>	<i>z</i>	$U_{\text{iso}}^*/U_{\text{eq}}$
S1	0.77201 (5)	0.32274 (3)	0.07911 (5)	0.04374 (16)
O1	0.54446 (14)	0.00715 (8)	0.22169 (16)	0.0488 (3)
N1	0.53208 (14)	0.29760 (9)	0.24120 (16)	0.0337 (3)
H1	0.530 (2)	0.3608 (7)	0.239 (2)	0.052 (6)*
N2	0.64135 (14)	0.15416 (9)	0.15732 (15)	0.0317 (3)
C1	0.64308 (17)	0.25505 (10)	0.16333 (17)	0.0317 (3)
C2	0.53764 (17)	0.09571 (11)	0.23320 (18)	0.0341 (3)
C3	0.42514 (16)	0.14680 (11)	0.32027 (18)	0.0320 (3)
C4	0.31809 (19)	0.09589 (12)	0.4035 (2)	0.0404 (4)
H4	0.3200	0.0282	0.4068	0.048*
C5	0.2099 (2)	0.14630 (14)	0.4804 (2)	0.0458 (4)
H5	0.1379	0.1125	0.5345	0.055*
C6	0.20775 (19)	0.24781 (14)	0.4776 (2)	0.0445 (4)
H6	0.1339	0.2813	0.5293	0.053*
C7	0.3140 (2)	0.29896 (11)	0.3990 (2)	0.0393 (4)
H7	0.3127	0.3667	0.3982	0.047*
C8	0.42342 (16)	0.24836 (11)	0.32063 (17)	0.0311 (3)
C9	0.76129 (18)	0.10324 (12)	0.07515 (18)	0.0376 (4)
H9A	0.7907	0.1420	-0.0155	0.045*
H9B	0.7242	0.0412	0.0340	0.045*
C10	0.89456 (19)	0.08610 (13)	0.1881 (2)	0.0433 (4)
H10	0.9300	0.1382	0.2505	0.052*
C11	0.9639 (2)	0.00289 (15)	0.2043 (3)	0.0568 (5)
H11A	0.9313	-0.0506	0.1436	0.068*

H11B	1.0459	-0.0029	0.2765	0.068*
------	--------	---------	--------	--------

Atomic displacement parameters (Å²)

	U^{11}	U^{22}	U^{33}	U^{12}	U^{13}	U^{23}
S1	0.0415 (3)	0.0325 (2)	0.0586 (3)	-0.00599 (15)	0.01623 (19)	0.00349 (16)
O1	0.0559 (7)	0.0207 (5)	0.0712 (8)	-0.0015 (5)	0.0180 (6)	-0.0008 (5)
N1	0.0363 (7)	0.0203 (6)	0.0448 (7)	0.0004 (5)	0.0068 (6)	0.0020 (5)
N2	0.0324 (6)	0.0236 (6)	0.0393 (6)	0.0015 (5)	0.0055 (5)	-0.0004 (5)
C1	0.0328 (7)	0.0252 (6)	0.0369 (7)	-0.0002 (5)	0.0014 (6)	0.0009 (5)
C2	0.0358 (8)	0.0252 (7)	0.0414 (8)	-0.0004 (6)	0.0014 (6)	0.0025 (6)
C3	0.0319 (7)	0.0254 (7)	0.0387 (7)	-0.0019 (6)	0.0015 (6)	0.0016 (5)
C4	0.0406 (9)	0.0305 (7)	0.0505 (9)	-0.0053 (6)	0.0072 (7)	0.0044 (6)
C5	0.0414 (9)	0.0461 (9)	0.0511 (9)	-0.0086 (7)	0.0141 (7)	0.0039 (7)
C6	0.0383 (9)	0.0460 (9)	0.0502 (9)	0.0042 (7)	0.0124 (7)	-0.0006 (7)
C7	0.0407 (9)	0.0301 (7)	0.0477 (9)	0.0047 (6)	0.0086 (7)	0.0007 (6)
C8	0.0308 (7)	0.0265 (7)	0.0358 (7)	0.0001 (5)	0.0009 (6)	0.0020 (5)
C9	0.0408 (9)	0.0316 (8)	0.0413 (8)	0.0052 (6)	0.0103 (7)	-0.0015 (6)
C10	0.0382 (8)	0.0422 (9)	0.0502 (9)	0.0042 (7)	0.0092 (7)	-0.0025 (7)
C11	0.0431 (10)	0.0497 (10)	0.0774 (13)	0.0049 (8)	0.0004 (9)	0.0047 (9)

Geometric parameters (Å, °)

S1—C1	1.6663 (15)	C5—C6	1.394 (3)
O1—C2	1.2212 (18)	C5—H5	0.9300
N1—C1	1.3487 (19)	C6—C7	1.376 (2)
N1—C8	1.3822 (19)	C6—H6	0.9300
N1—H1	0.869 (9)	C7—C8	1.392 (2)
N2—C1	1.3858 (17)	C7—H7	0.9300
N2—C2	1.4031 (19)	C9—C10	1.502 (2)
N2—C9	1.4799 (18)	C9—H9A	0.9700
C2—C3	1.453 (2)	C9—H9B	0.9700
C3—C8	1.394 (2)	C10—C11	1.305 (3)
C3—C4	1.399 (2)	C10—H10	0.9300
C4—C5	1.377 (2)	C11—H11A	0.9300
C4—H4	0.9300	C11—H11B	0.9300
C1—N1—C8	125.05 (13)	C7—C6—C5	120.60 (15)
C1—N1—H1	116.1 (14)	C7—C6—H6	119.7
C8—N1—H1	118.8 (14)	C5—C6—H6	119.7
C1—N2—C2	124.18 (12)	C6—C7—C8	119.37 (15)
C1—N2—C9	118.79 (12)	C6—C7—H7	120.3
C2—N2—C9	116.91 (12)	C8—C7—H7	120.3
N1—C1—N2	116.28 (13)	N1—C8—C7	120.78 (14)
N1—C1—S1	120.42 (11)	N1—C8—C3	118.67 (13)
N2—C1—S1	123.29 (11)	C7—C8—C3	120.55 (14)
O1—C2—N2	119.80 (14)	N2—C9—C10	111.18 (12)
O1—C2—C3	123.95 (14)	N2—C9—H9A	109.4

N2—C2—C3	116.24 (13)	C10—C9—H9A	109.4
C8—C3—C4	119.36 (14)	N2—C9—H9B	109.4
C8—C3—C2	119.46 (13)	C10—C9—H9B	109.4
C4—C3—C2	121.18 (14)	H9A—C9—H9B	108.0
C5—C4—C3	119.84 (15)	C11—C10—C9	124.25 (18)
C5—C4—H4	120.1	C11—C10—H10	117.9
C3—C4—H4	120.1	C9—C10—H10	117.9
C4—C5—C6	120.25 (15)	C10—C11—H11A	120.0
C4—C5—H5	119.9	C10—C11—H11B	120.0
C6—C5—H5	119.9	H11A—C11—H11B	120.0
C8—N1—C1—N2	3.4 (2)	C2—C3—C4—C5	-177.85 (15)
C8—N1—C1—S1	-177.21 (12)	C3—C4—C5—C6	-0.9 (3)
C2—N2—C1—N1	-3.4 (2)	C4—C5—C6—C7	-0.4 (3)
C9—N2—C1—N1	-179.29 (13)	C5—C6—C7—C8	0.6 (3)
C2—N2—C1—S1	177.16 (11)	C1—N1—C8—C7	179.38 (14)
C9—N2—C1—S1	1.30 (19)	C1—N1—C8—C3	-0.9 (2)
C1—N2—C2—O1	-179.93 (14)	C6—C7—C8—N1	-179.70 (15)
C9—N2—C2—O1	-4.0 (2)	C6—C7—C8—C3	0.5 (2)
C1—N2—C2—C3	1.0 (2)	C4—C3—C8—N1	178.43 (14)
C9—N2—C2—C3	176.97 (12)	C2—C3—C8—N1	-1.7 (2)
O1—C2—C3—C8	-177.37 (15)	C4—C3—C8—C7	-1.8 (2)
N2—C2—C3—C8	1.6 (2)	C2—C3—C8—C7	178.01 (14)
O1—C2—C3—C4	2.4 (2)	C1—N2—C9—C10	86.69 (17)
N2—C2—C3—C4	-178.57 (14)	C2—N2—C9—C10	-89.46 (16)
C8—C3—C4—C5	2.0 (2)	N2—C9—C10—C11	132.15 (19)

Hydrogen-bond geometry (\AA , $^\circ$)

$D-H\cdots A$	$D-H$	$H\cdots A$	$D\cdots A$	$D-H\cdots A$
N1—H1 \cdots O1 ⁱ	0.87 (1)	2.15 (1)	2.977 (2)	160 (2)

Symmetry code: (i) $-x+1, y+1/2, -z+1/2$.