

Acta Crystallographica Section E

Structure Reports

Online

ISSN 1600-5368

(E)-4-Bromo-2-[(2,6-diisopropylphenyl)-iminomethyl]phenolP. Balamurugan,^a K. Kanmani Raja,^b S. Kutti Rani,^c
G. Chakkaravarthi^{d*} and G. Rajagopal^{e*}

^aDepartment of Chemistry, Government Arts College (Men), Nandanam, Chennai 600 035, India, ^bDepartment of Chemistry, Government Thirumagal Mills College, Gudiyattam 632 604, India, ^cDepartment of Chemistry, B.S. Abdur Rahman University, Vandalur, Chennai 600 049, India, ^dDepartment of Physics, CPCL Polytechnic College, Chennai 600 068, India, and ^eDepartment of Chemistry, Government Arts College, Melur 625 106, India
Correspondence e-mail: chakkaravarthi_2005@yahoo.com, rajagopal18@yahoo.com

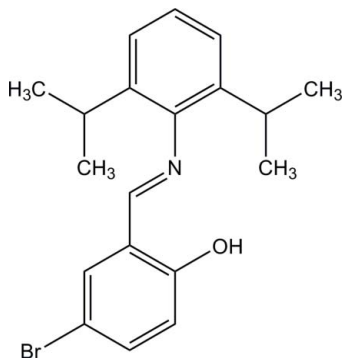
Received 11 May 2012; accepted 13 May 2012

Key indicators: single-crystal X-ray study; $T = 295$ K; mean $\sigma(\text{C}-\text{C}) = 0.004$ Å; disorder in main residue; R factor = 0.040; wR factor = 0.100; data-to-parameter ratio = 23.9.

In the title compound, $\text{C}_{19}\text{H}_{22}\text{BrNO}$, the dihedral angle between the benzene rings is $76.17(14)^\circ$ and an intramolecular $\text{O}-\text{H}\cdots\text{N}$ hydrogen bond with an $S(6)$ graph-set motif is present. One methyl group is disordered over two sets of sites with site occupancies of 0.66 (3) and 0.34 (3). A weak intermolecular $\text{C}-\text{H}\cdots\pi$ interaction is observed in the crystal structure.

Related literature

For the biological activity of Schiff base ligands, see: Daier *et al.* (2004); Santos *et al.* (2001). For related structures, see: Raja *et al.* (2008); Lin *et al.* (2005).



Experimental

Crystal data

 $\text{C}_{19}\text{H}_{22}\text{BrNO}$ $M_r = 360.29$

Orthorhombic, $P2_12_12_1$
 $a = 6.1851(12)$ Å
 $b = 12.759(3)$ Å
 $c = 22.698(5)$ Å
 $V = 1791.3(6)$ Å³

$Z = 4$
Mo $K\alpha$ radiation
 $\mu = 2.30$ mm⁻¹
 $T = 295$ K
 $0.24 \times 0.22 \times 0.18$ mm

Data collection

Bruker Kappa APEXII diffractometer
Absorption correction: multi-scan (SADABS; Sheldrick, 1996)
 $T_{\min} = 0.609$, $T_{\max} = 0.683$

23590 measured reflections
5107 independent reflections
3242 reflections with $I > 2\sigma(I)$
 $R_{\text{int}} = 0.039$

Refinement

$R[F^2 > 2\sigma(F^2)] = 0.040$
 $wR(F^2) = 0.100$
 $S = 1.01$
5107 reflections
214 parameters
H-atom parameters constrained

$\Delta\rho_{\text{max}} = 0.38$ e Å⁻³
 $\Delta\rho_{\text{min}} = -0.22$ e Å⁻³
Absolute structure: Flack (1983),
2179 Friedel pairs
Flack parameter: 0.011 (10)

Table 1

Hydrogen-bond geometry (Å, °).

Cg2 is the centroid of the C14–C19 ring.

$D-H\cdots A$	$D-H$	$H\cdots A$	$D\cdots A$	$D-H\cdots A$
O1–H1 \cdots N1	0.82	1.87	2.597 (3)	147
C16–H16 \cdots Cg2 ⁱ	0.93	2.86	3.522 (3)	129

Symmetry code: (i) $-x, y + \frac{1}{2}, -z + \frac{5}{2}$.

Data collection: APEX2 (Bruker, 2004); cell refinement: SAINT (Bruker, 2004); data reduction: SAINT; program(s) used to solve structure: SHELXS97 (Sheldrick, 2008); program(s) used to refine structure: SHELXL97 (Sheldrick, 2008); molecular graphics: PLATON (Spek, 2009); software used to prepare material for publication: SHELXL97.

The authors wish to acknowledge the SAIF, IIT Madras, for the data collection.

Supplementary data and figures for this paper are available from the IUCr electronic archives (Reference: IS5140).

References

- Bruker (2004). APEX2 and SAINT. Bruker AXS Inc., Madison, Wisconsin, USA.
Daier, V., Biava, H., Palopoli, C., Shove, S., Tuchagues, J. P. & Signorella, S. (2004). *J. Inorg. Biochem.* **98**, 1806–1817.
Flack, H. D. (1983). *Acta Cryst.* **A39**, 876–881.
Lin, J., Cui, G.-H., Li, J.-R. & Xu, S.-S. (2005). *Acta Cryst.* **E61**, o627–o628.
Raja, K. K., Bilal, I. M., Thambidurai, S., Rajagopal, G. & SubbiahPandi, A. (2008). *Acta Cryst.* **E64**, o2265.
Santos, M. L. P., Bagatin, I. A., Pereira, E. M. & Ferreira, A. M. D. C. (2001). *J. Chem. Soc. Dalton Trans.* pp. 838–844.
Sheldrick, G. M. (1996). SADABS. University of Göttingen, Germany.
Sheldrick, G. M. (2008). *Acta Cryst.* **A64**, 112–122.
Spek, A. L. (2009). *Acta Cryst.* **D65**, 148–155.

supporting information

Acta Cryst. (2012). E68, o1782 [doi:10.1107/S1600536812021605]

(E)-4-Bromo-2-[(2,6-diisopropylphenyl)iminomethyl]phenol

P. Balamurugan, K. Kanmani Raja, S. Kutti Rani, G. Chakkaravarthi and G. Rajagopal

S1. Comment

Schiff base derivatives are known to exhibit catalytic (Daier *et al.*, 2004), antibacterial, antitumor and antitoxic (Santos *et al.*, 2001) activities. The geometric parameters in the title compound are comparable with the similar reported structures (Raja *et al.*, 2008; Lin *et al.*, 2005). The dihedral angle between the aromatic rings (C1–C6) and (C14–C19) is 76.17 (14)°. One of the methyl groups in the molecule is disordered over two positions with site occupancies of 0.66 (3) and 0.34 (3). The molecule adopts an anti-periplanar [C1–N1–C13–C14 = -179.5 (2)°] conformation about the C=N double bond. The molecular structure is stabilized by an intramolecular O—H···N hydrogen bond and the crystal structure exhibit a weak intermolecular C—H··· π (Table 1) interaction.

S2. Experimental

An ethanolic solution (10 ml) of 2,6-diisopropylaniline (2 mmol) was magnetically stirred in a round bottom flask followed by drop wise addition of ethanolic solution (10 ml) of 5-bromosalicylaldehyde (2 mmol). The reaction mixture was then refluxed for 3 h and upon cooling to 273 K, a yellow solid precipitated from the reaction mixture. The solid which separated out was filtered, washed with ice cold ethanol and dried over anhydrous CaCl₂. Single crystal of good diffraction quality was obtained by the recrystallization of compound with the ethanol solution by slow evaporation method. Yield: 70%.

S3. Refinement

The site occupancies of disordered atoms were refined as C11/C11(A) = 0.66 (3)/0.34 (3). H atoms were positioned geometrically with C—H = 0.93–0.97 Å and O—H = 0.82 Å and allowed to ride on their parent atoms, with $U_{\text{iso}}(\text{H}) = 1.5U_{\text{eq}}(\text{O})$, $1.2U_{\text{eq}}(\text{C})$ or $1.5U_{\text{eq}}(\text{C}_{\text{methyl}})$.

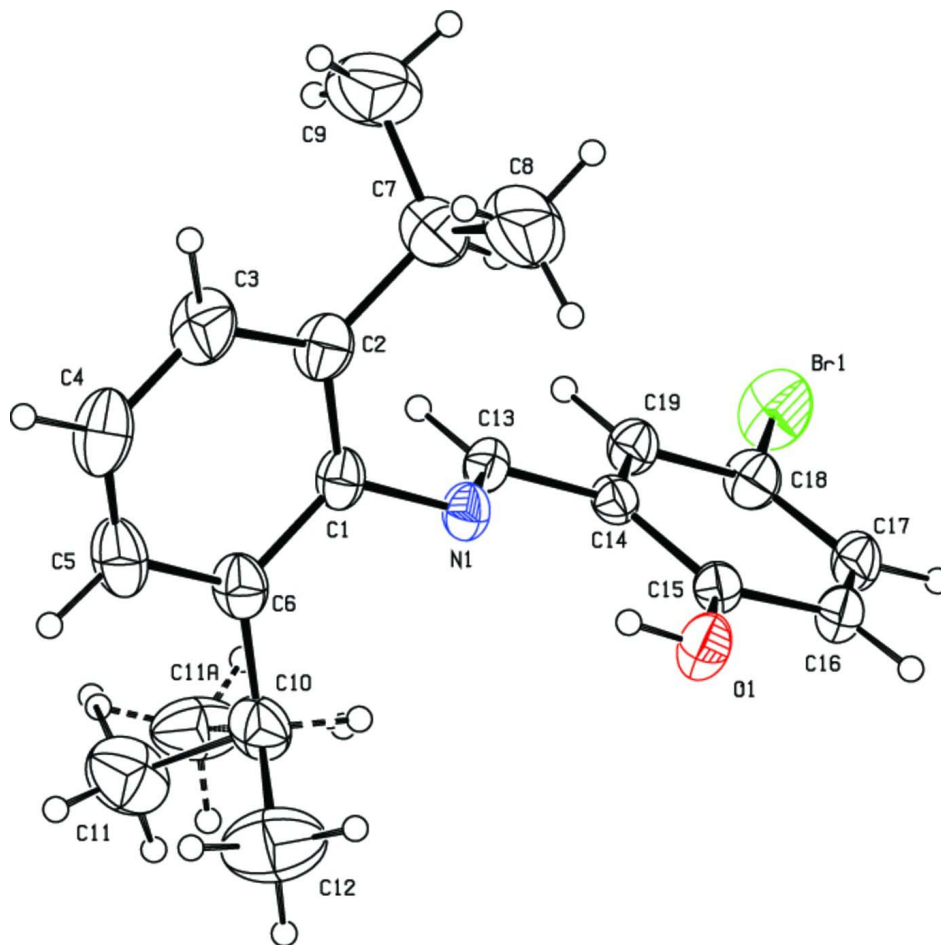


Figure 1

The molecular structure of the title compound, with atom labels and 30% probability displacement ellipsoids for non-H atoms.

(*E*)-4-Bromo-2-[(2,6-diisopropylphenyl)iminomethyl]phenol

Crystal data

$C_{19}H_{22}BrNO$

$M_r = 360.29$

Orthorhombic, $P2_12_12_1$

Hall symbol: P 2ac 2ab

$a = 6.1851(12) \text{ \AA}$

$b = 12.759(3) \text{ \AA}$

$c = 22.698(5) \text{ \AA}$

$V = 1791.3(6) \text{ \AA}^3$

$Z = 4$

$F(000) = 744$

$D_x = 1.336 \text{ Mg m}^{-3}$

Mo $K\alpha$ radiation, $\lambda = 0.71073 \text{ \AA}$

Cell parameters from 2359 reflections

$\theta = 1.8\text{--}29.8^\circ$

$\mu = 2.30 \text{ mm}^{-1}$

$T = 295 \text{ K}$

Prism, light yellow

$0.24 \times 0.22 \times 0.18 \text{ mm}$

Data collection

Bruker Kappa APEXII
diffractometer

Radiation source: fine-focus sealed tube

Graphite monochromator

ω and φ scans

Absorption correction: multi-scan
(*SADABS*; Sheldrick, 1996)

$T_{\min} = 0.609$, $T_{\max} = 0.683$

23590 measured reflections

5107 independent reflections

3242 reflections with $I > 2\sigma(I)$
 $R_{\text{int}} = 0.039$
 $\theta_{\text{max}} = 29.8^\circ$, $\theta_{\text{min}} = 1.8^\circ$

$h = -8 \rightarrow 8$
 $k = -17 \rightarrow 11$
 $l = -30 \rightarrow 31$

Refinement

Refinement on F^2
 Least-squares matrix: full
 $R[F^2 > 2\sigma(F^2)] = 0.040$
 $wR(F^2) = 0.100$
 $S = 1.01$
 5107 reflections
 214 parameters
 0 restraints
 Primary atom site location: structure-invariant
 direct methods
 Secondary atom site location: difference Fourier
 map

Hydrogen site location: inferred from
 neighbouring sites
 H-atom parameters constrained
 $w = 1/[\sigma^2(F_o^2) + (0.0449P)^2 + 0.1641P]$
 where $P = (F_o^2 + 2F_c^2)/3$
 $(\Delta/\sigma)_{\text{max}} < 0.001$
 $\Delta\rho_{\text{max}} = 0.38 \text{ e } \text{\AA}^{-3}$
 $\Delta\rho_{\text{min}} = -0.22 \text{ e } \text{\AA}^{-3}$
 Absolute structure: Flack (1983), 2179 Friedel
 pairs
 Absolute structure parameter: 0.011 (10)

Fractional atomic coordinates and isotropic or equivalent isotropic displacement parameters (\AA^2)

	<i>x</i>	<i>y</i>	<i>z</i>	$U_{\text{iso}}^*/U_{\text{eq}}$	Occ. (<1)
Br1	0.52689 (6)	0.49239 (2)	0.950698 (17)	0.07970 (14)	
O1	1.1558 (3)	0.14355 (16)	0.90753 (9)	0.0593 (5)	
H1	1.1027	0.0973	0.8870	0.089*	
N1	0.8534 (3)	0.04639 (16)	0.84992 (9)	0.0439 (5)	
C1	0.7847 (4)	-0.0403 (2)	0.81528 (12)	0.0454 (6)	
C2	0.6525 (5)	-0.1178 (2)	0.83940 (14)	0.0579 (7)	
C3	0.6048 (6)	-0.2032 (2)	0.80436 (16)	0.0747 (10)	
H3	0.5181	-0.2565	0.8192	0.090*	
C4	0.6846 (7)	-0.2105 (3)	0.74734 (17)	0.0814 (11)	
H4	0.6517	-0.2690	0.7246	0.098*	
C5	0.8084 (6)	-0.1344 (3)	0.72451 (16)	0.0736 (10)	
H5	0.8562	-0.1399	0.6858	0.088*	
C6	0.8666 (5)	-0.0472 (2)	0.75789 (13)	0.0542 (7)	
C7	0.5681 (6)	-0.1119 (2)	0.90207 (15)	0.0744 (10)	
H7	0.5856	-0.0393	0.9154	0.089*	
C8	0.7009 (9)	-0.1799 (5)	0.94217 (19)	0.1273 (19)	
H8A	0.6944	-0.2512	0.9288	0.191*	
H8B	0.6448	-0.1756	0.9815	0.191*	
H8C	0.8483	-0.1563	0.9418	0.191*	
C9	0.3341 (7)	-0.1387 (5)	0.9075 (2)	0.1205 (18)	
H9A	0.2865	-0.1250	0.9470	0.181*	
H9B	0.3135	-0.2115	0.8986	0.181*	
H9C	0.2519	-0.0968	0.8805	0.181*	
C10	1.0109 (5)	0.0367 (2)	0.73253 (13)	0.0632 (7)	
H10A	1.0195	0.0961	0.7598	0.076*	0.66 (3)
H10B	1.0424	0.0756	0.7688	0.076*	0.34 (3)
C11	0.933 (2)	0.0755 (10)	0.6705 (6)	0.097 (3)	0.66 (3)
H11A	0.7786	0.0838	0.6708	0.145*	0.66 (3)
H11B	0.9724	0.0249	0.6411	0.145*	0.66 (3)

H11C	0.9998	0.1415	0.6616	0.145*	0.66 (3)
C11A	0.884 (2)	0.114 (2)	0.7024 (16)	0.090 (8)	0.34 (3)
H11D	0.9780	0.1663	0.6856	0.135*	0.34 (3)
H11E	0.7874	0.1474	0.7299	0.135*	0.34 (3)
H11F	0.8016	0.0816	0.6717	0.135*	0.34 (3)
C12	1.2339 (6)	-0.0035 (5)	0.7194 (3)	0.1209 (16)	
H12A	1.2247	-0.0607	0.6920	0.181*	
H12B	1.3004	-0.0274	0.7552	0.181*	
H12C	1.3193	0.0518	0.7026	0.181*	
C13	0.7284 (4)	0.12241 (19)	0.86014 (11)	0.0422 (6)	
H13	0.5887	0.1212	0.8450	0.051*	
C14	0.7982 (4)	0.21236 (17)	0.89527 (10)	0.0384 (5)	
C15	1.0081 (4)	0.21757 (17)	0.91771 (10)	0.0422 (5)	
C16	1.0655 (4)	0.3034 (2)	0.95214 (12)	0.0512 (6)	
H16	1.2027	0.3063	0.9688	0.061*	
C17	0.9235 (4)	0.38342 (19)	0.96183 (12)	0.0524 (7)	
H17	0.9646	0.4406	0.9846	0.063*	
C18	0.7203 (5)	0.37927 (19)	0.93793 (12)	0.0503 (6)	
C19	0.6555 (4)	0.29447 (18)	0.90542 (11)	0.0451 (6)	
H19	0.5161	0.2919	0.8902	0.054*	

Atomic displacement parameters (Å²)

	U^{11}	U^{22}	U^{33}	U^{12}	U^{13}	U^{23}
Br1	0.0866 (2)	0.04417 (15)	0.1083 (3)	0.00809 (16)	-0.00202 (19)	-0.02501 (15)
O1	0.0492 (10)	0.0627 (12)	0.0659 (13)	0.0044 (9)	-0.0119 (9)	-0.0171 (10)
N1	0.0484 (12)	0.0408 (10)	0.0425 (12)	0.0010 (9)	-0.0039 (10)	-0.0101 (9)
C1	0.0501 (14)	0.0390 (12)	0.0471 (15)	0.0059 (10)	-0.0079 (12)	-0.0103 (11)
C2	0.0687 (19)	0.0389 (13)	0.0662 (19)	-0.0029 (13)	-0.0054 (16)	-0.0082 (13)
C3	0.098 (3)	0.0426 (15)	0.083 (2)	-0.0111 (16)	-0.005 (2)	-0.0158 (16)
C4	0.107 (3)	0.0502 (17)	0.087 (3)	-0.0003 (18)	-0.020 (2)	-0.0313 (17)
C5	0.094 (3)	0.069 (2)	0.058 (2)	0.0120 (19)	-0.0027 (19)	-0.0291 (17)
C6	0.0587 (16)	0.0519 (14)	0.0520 (17)	0.0123 (13)	-0.0015 (14)	-0.0127 (13)
C7	0.108 (3)	0.0476 (15)	0.067 (2)	-0.0152 (18)	0.014 (2)	-0.0056 (15)
C8	0.107 (3)	0.197 (6)	0.078 (3)	-0.001 (4)	-0.007 (3)	0.025 (3)
C9	0.091 (3)	0.148 (5)	0.123 (4)	0.008 (3)	0.032 (3)	0.000 (3)
C10	0.0646 (18)	0.0675 (16)	0.0575 (16)	0.0092 (15)	0.0088 (15)	-0.0125 (13)
C11	0.099 (6)	0.106 (6)	0.085 (6)	0.019 (5)	0.003 (5)	0.024 (5)
C11A	0.070 (8)	0.087 (11)	0.114 (18)	0.003 (7)	0.011 (8)	0.043 (12)
C12	0.084 (2)	0.109 (3)	0.170 (5)	0.012 (3)	0.032 (3)	0.001 (4)
C13	0.0442 (14)	0.0415 (12)	0.0408 (15)	-0.0048 (11)	-0.0065 (11)	-0.0051 (11)
C14	0.0465 (13)	0.0362 (11)	0.0326 (12)	-0.0048 (10)	0.0028 (10)	-0.0024 (10)
C15	0.0466 (14)	0.0435 (11)	0.0364 (12)	-0.0054 (12)	-0.0005 (12)	-0.0017 (9)
C16	0.0529 (14)	0.0573 (14)	0.0435 (14)	-0.0130 (11)	-0.0068 (13)	-0.0046 (12)
C17	0.0686 (18)	0.0429 (12)	0.0458 (15)	-0.0169 (12)	-0.0014 (13)	-0.0108 (11)
C18	0.0628 (16)	0.0340 (11)	0.0541 (17)	-0.0041 (11)	0.0033 (13)	-0.0071 (11)
C19	0.0499 (14)	0.0396 (12)	0.0457 (14)	-0.0035 (11)	-0.0014 (12)	-0.0061 (11)

Geometric parameters (Å, °)

Br1—C18	1.897 (3)	C10—C11A	1.438 (13)
O1—C15	1.334 (3)	C10—C12	1.502 (5)
O1—H1	0.8200	C10—C11	1.569 (9)
N1—C13	1.262 (3)	C10—H10A	0.9800
N1—C1	1.422 (3)	C10—H10B	0.9800
C1—C2	1.394 (4)	C11—H11A	0.9600
C1—C6	1.401 (4)	C11—H11B	0.9600
C2—C3	1.381 (4)	C11—H11C	0.9600
C2—C7	1.517 (5)	C11A—H11D	0.9600
C3—C4	1.388 (5)	C11A—H11E	0.9600
C3—H3	0.9300	C11A—H11F	0.9600
C4—C5	1.340 (5)	C12—H12A	0.9600
C4—H4	0.9300	C12—H12B	0.9600
C5—C6	1.393 (4)	C12—H12C	0.9600
C5—H5	0.9300	C13—C14	1.462 (3)
C6—C10	1.508 (4)	C13—H13	0.9300
C7—C9	1.492 (6)	C14—C19	1.389 (3)
C7—C8	1.502 (6)	C14—C15	1.396 (4)
C7—H7	0.9800	C15—C16	1.392 (3)
C8—H8A	0.9600	C16—C17	1.364 (4)
C8—H8B	0.9600	C16—H16	0.9300
C8—H8C	0.9600	C17—C18	1.370 (4)
C9—H9A	0.9600	C17—H17	0.9300
C9—H9B	0.9600	C18—C19	1.370 (3)
C9—H9C	0.9600	C19—H19	0.9300
C15—O1—H1	109.5	C12—C10—H10A	109.9
C13—N1—C1	121.1 (2)	C6—C10—H10A	109.9
C2—C1—C6	122.2 (3)	C11—C10—H10A	109.9
C2—C1—N1	120.6 (2)	C11A—C10—H10B	99.1
C6—C1—N1	117.1 (2)	C12—C10—H10B	99.0
C3—C2—C1	117.3 (3)	C6—C10—H10B	99.0
C3—C2—C7	120.4 (3)	C10—C11—H11A	109.5
C1—C2—C7	122.3 (2)	C10—C11—H11B	109.5
C2—C3—C4	120.9 (3)	C10—C11—H11C	109.5
C2—C3—H3	119.5	C10—C11A—H11D	109.5
C4—C3—H3	119.5	C10—C11A—H11E	109.5
C5—C4—C3	121.0 (3)	H11D—C11A—H11E	109.5
C5—C4—H4	119.5	C10—C11A—H11F	109.5
C3—C4—H4	119.5	H11D—C11A—H11F	109.5
C4—C5—C6	121.0 (3)	H11E—C11A—H11F	109.5
C4—C5—H5	119.5	C10—C12—H12A	109.5
C6—C5—H5	119.5	C10—C12—H12B	109.5
C5—C6—C1	117.6 (3)	H12A—C12—H12B	109.5
C5—C6—C10	120.8 (3)	C10—C12—H12C	109.5
C1—C6—C10	121.6 (2)	H12A—C12—H12C	109.5

C9—C7—C8	110.3 (4)	H12B—C12—H12C	109.5
C9—C7—C2	113.6 (3)	N1—C13—C14	121.5 (2)
C8—C7—C2	110.6 (3)	N1—C13—H13	119.2
C9—C7—H7	107.3	C14—C13—H13	119.2
C8—C7—H7	107.3	C19—C14—C15	119.6 (2)
C2—C7—H7	107.3	C19—C14—C13	119.7 (2)
C7—C8—H8A	109.5	C15—C14—C13	120.7 (2)
C7—C8—H8B	109.5	O1—C15—C16	118.7 (2)
H8A—C8—H8B	109.5	O1—C15—C14	122.7 (2)
C7—C8—H8C	109.5	C16—C15—C14	118.6 (2)
H8A—C8—H8C	109.5	C17—C16—C15	121.0 (2)
H8B—C8—H8C	109.5	C17—C16—H16	119.5
C7—C9—H9A	109.5	C15—C16—H16	119.5
C7—C9—H9B	109.5	C16—C17—C18	119.8 (2)
H9A—C9—H9B	109.5	C16—C17—H17	120.1
C7—C9—H9C	109.5	C18—C17—H17	120.1
H9A—C9—H9C	109.5	C19—C18—C17	120.8 (2)
H9B—C9—H9C	109.5	C19—C18—Br1	119.9 (2)
C11A—C10—C12	130.0 (11)	C17—C18—Br1	119.25 (19)
C11A—C10—C6	110.4 (6)	C18—C19—C14	120.0 (3)
C12—C10—C6	112.1 (3)	C18—C19—H19	120.0
C12—C10—C11	102.2 (7)	C14—C19—H19	120.0
C6—C10—C11	112.6 (4)		
C13—N1—C1—C2	-78.3 (3)	C1—C6—C10—C11A	-91.3 (18)
C13—N1—C1—C6	105.7 (3)	C5—C6—C10—C12	-65.0 (4)
C6—C1—C2—C3	0.3 (4)	C1—C6—C10—C12	115.6 (4)
N1—C1—C2—C3	-175.6 (3)	C5—C6—C10—C11	49.7 (8)
C6—C1—C2—C7	178.4 (3)	C1—C6—C10—C11	-129.7 (8)
N1—C1—C2—C7	2.6 (4)	C1—N1—C13—C14	-179.5 (2)
C1—C2—C3—C4	-0.5 (5)	N1—C13—C14—C19	179.9 (2)
C7—C2—C3—C4	-178.7 (3)	N1—C13—C14—C15	1.2 (4)
C2—C3—C4—C5	-0.6 (6)	C19—C14—C15—O1	-177.2 (2)
C3—C4—C5—C6	2.1 (6)	C13—C14—C15—O1	1.5 (4)
C4—C5—C6—C1	-2.2 (5)	C19—C14—C15—C16	2.9 (3)
C4—C5—C6—C10	178.3 (3)	C13—C14—C15—C16	-178.4 (2)
C2—C1—C6—C5	1.1 (4)	O1—C15—C16—C17	177.2 (2)
N1—C1—C6—C5	177.1 (3)	C14—C15—C16—C17	-2.8 (4)
C2—C1—C6—C10	-179.5 (3)	C15—C16—C17—C18	0.6 (4)
N1—C1—C6—C10	-3.5 (4)	C16—C17—C18—C19	1.5 (4)
C3—C2—C7—C9	-46.7 (5)	C16—C17—C18—Br1	-178.9 (2)
C1—C2—C7—C9	135.2 (4)	C17—C18—C19—C14	-1.4 (4)
C3—C2—C7—C8	78.0 (4)	Br1—C18—C19—C14	178.98 (19)
C1—C2—C7—C8	-100.1 (4)	C15—C14—C19—C18	-0.8 (4)
C5—C6—C10—C11A	88.1 (18)	C13—C14—C19—C18	-179.5 (2)

*Hydrogen-bond geometry (Å, °)**Cg2* is the centroid of the C14–C19 ring.

<i>D</i> —H··· <i>A</i>	<i>D</i> —H	H··· <i>A</i>	<i>D</i> ··· <i>A</i>	<i>D</i> —H··· <i>A</i>
O1—H1···N1	0.82	1.87	2.597 (3)	147
C16—H16··· <i>Cg2</i> ⁱ	0.93	2.86	3.522 (3)	129

Symmetry code: (i) $-x, y+1/2, -z+5/2$.