

Acta Crystallographica Section E

Structure Reports

Online

ISSN 1600-5368

catena-Poly[[*(acetato-κ²O,O')*][2-(4-oxo-1,4-dihydroquinolin-1-yl)acetato-κ¹O¹]-copper(II)]-μ-4,4'-bipyridine-κ²N:N']

Jun Wang, Chuntao Dai and Jianhua Nie*

Zhongshan Polytechnic, Zhongshan, Guangdong 528404, People's Republic of China

Correspondence e-mail: wangjun7203@126.com

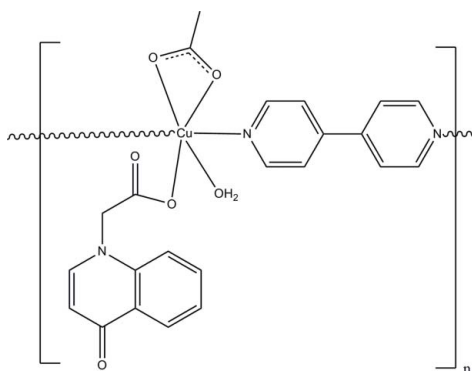
Received 17 July 2012; accepted 20 July 2012

Key indicators: single-crystal X-ray study; $T = 298$ K; mean $\sigma(\text{C}-\text{C}) = 0.004$ Å; R factor = 0.035; wR factor = 0.087; data-to-parameter ratio = 12.5.

In the title compound, $[\text{Cu}(\text{C}_{11}\text{H}_8\text{NO}_3)(\text{CH}_3\text{COO})-(\text{C}_{10}\text{H}_8\text{N}_2)]_n$, the Cu^{II} ion is six-coordinated by two N atoms from two 4,4'-bipyridine ligands, four O atoms from one acetate ligand, one 2-(4-oxo-1,4-dihydroquinolin-1-yl)acetate ligand and one water molecule in a distorted octahedral geometry. The 4,4'-bipyridine ligands interconnect $[\text{Cu}(\text{C}_{11}\text{H}_8\text{NO}_3)(\text{CH}_3\text{COO})]$ units, giving rise to a chain along [010]. These chains are further linked to each other by $\text{O}-\text{H}\cdots\text{O}$ hydrogen bonds, leading to a two-dimensional supramolecular network parallel to (100).

Related literature

For the structures of similar Cd^{II} and Ag^{I} complexes, see: Wang *et al.* (2010).



Experimental

Crystal data

$[\text{Cu}(\text{C}_{11}\text{H}_8\text{NO}_3)(\text{C}_2\text{H}_3\text{O}_2)-(\text{C}_{10}\text{H}_8\text{N}_2)]$	$\beta = 71.27$ (3)°
$M_r = 498.97$	$\gamma = 88.03$ (3)°
Triclinic, $P\bar{1}$	$V = 1071.3$ (5) Å ³
$a = 9.543$ (2) Å	$Z = 2$
$b = 11.121$ (2) Å	Mo $K\alpha$ radiation
$c = 11.381$ (2) Å	$\mu = 1.07$ mm ⁻¹
$\alpha = 70.03$ (3)°	$T = 298$ K
	$0.35 \times 0.26 \times 0.22$ mm

Data collection

Bruker APEXII area-detector diffractometer	5588 measured reflections
Absorption correction: multi-scan (SADABS; Sheldrick, 1996)	3815 independent reflections
$T_{\text{min}} = 0.707$, $T_{\text{max}} = 0.799$	3217 reflections with $I > 2\sigma(I)$
	$R_{\text{int}} = 0.018$

Refinement

$R[F^2 > 2\sigma(F^2)] = 0.035$	H atoms treated by a mixture of independent and constrained refinement
$wR(F^2) = 0.087$	$\Delta\rho_{\text{max}} = 0.27$ e Å ⁻³
$S = 1.03$	$\Delta\rho_{\text{min}} = -0.29$ e Å ⁻³
3815 reflections	
305 parameters	
3 restraints	

Table 1

Hydrogen-bond geometry (Å, °).

$D-\text{H}\cdots A$	$D-\text{H}$	$\text{H}\cdots A$	$D\cdots A$	$D-\text{H}\cdots A$
$\text{O1W}-\text{H1W}\cdots\text{O3}^{\text{i}}$	0.83 (1)	1.98 (1)	2.795 (3)	166 (3)
$\text{O1W}-\text{H2W}\cdots\text{O2}$	0.83 (1)	1.99 (2)	2.740 (4)	151 (2)

Symmetry code: (i) $x, y, z + 1$.

Data collection: APEX2 (Bruker, 2004); cell refinement: SAINT (Bruker, 2004); data reduction: SAINT; program(s) used to solve structure: SHELXS97 (Sheldrick, 2008); program(s) used to refine structure: SHELXL97 (Sheldrick, 2008); molecular graphics: SHELXTL (Sheldrick, 2008); software used to prepare material for publication: SHELXTL.

The work was supported by Zhongshan Polytechnic.

Supplementary data and figures for this paper are available from the IUCr electronic archives (Reference: BG2474).

References

- Bruker (2004). APEX2 and SAINT. Bruker AXS Inc, Madison, Wisconsin, USA.
- Sheldrick, G. M. (1996). SADABS. University of Göttingen, Germany.
- Sheldrick, G. M. (2008). *Acta Cryst.* **A64**, 112–122.
- Wang, J., Fan, J., Guo, L. Y., Yin, X., Wang, Z. H. & Zhang, W. G. (2010). *Inorg. Chem. Commun.* **13**, 322–325.

supporting information

Acta Cryst. (2012). E68, m1132 [https://doi.org/10.1107/S160053681203303X]

***catena*-Poly[[*(acetato-κ²O,O')*[2-(4-oxo-1,4-dihydroquinolin-1-yl)acetato-κ¹]copper(II)]-μ-4,4'-bipyridine-κ²N:N']**

Jun Wang, Chuntao Dai and Jianhua Nie

S1. Comment

The title compound was obtained upon the reaction of 4-Oxo-1(4*H*) quinolineacetic acid, 4,4'-bipyridine and copper acetate. In the asymmetric unit of the title compound (I) (Fig. 1), each Cu^{II} ion is six-coordinated by two N atoms from two 4,4'-bipyridine ligands, four O atoms from one acetate ligand, one 4-Oxo-1(4*H*)quinolineacetate ligand and one water molecule in a distorted octahedral geometry. The Cu1-O5 bond distance is 2.720 (2)Å, indicative of a weak bond. Similar arrangements are observed in the structures of related mixed-ligand Cd(II) and Ag(I) complexes (Wang *et al.*, 2010). 4,4'-bipyridine ligands interconnect [Cu(CH₃COO)(C₁₁H₈NO₃)] moieties, giving rise to a one-dimensional chain along [010]. These chains further link to each other by O—H...O hydrogen bonds (Table 1), leading to a 2D supramolecular network parallel to (100) (Fig. 2).

S2. Experimental

The title complex was prepared by the addition of a stoichiometric amount of copper acetate (0.181 g; 1 mmol) and 4,4'-bipyridine (0.156 g; 1 mmol) to a hot water/ethanol (*v/v* = 1:1) solution (5 ml) of 4-Oxo-1(4*H*) quinolineacetic acid (0.203 g; 1 mmol). The pH was then adjusted to 7.0 to 8.0 with NaOH (10 *mM/L*). The resulting solution was filtered, and colorless crystals were obtained at room temperature on slow evaporation of the solvent over several days.

S3. Refinement

Hydrogen atoms were located in a difference Fourier map. C—H's were further placed at calculated positions (C—H = 0.95–0.99 Å); O—H were refined with restrained O—H = 0.83 (1) Å. In all cases, $U_{\text{iso}}(\text{H})$ were set to 1.2–1.5 times $U_{\text{eq}}(\text{C}, \text{O})$.



Figure 1

Molecular view of the title compound with displacement ellipsoids drawn at the 30% probability level. Symmetry code: (i) $x, 1 + y, z$.

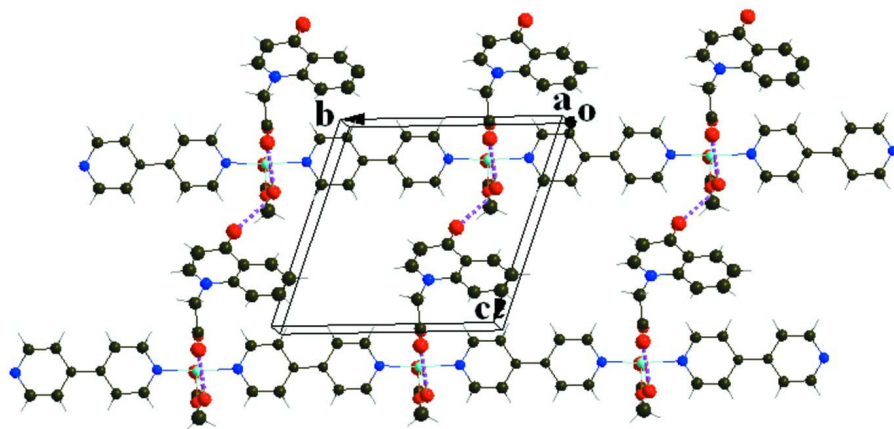


Figure 2

The packing of the title structure.

catena-Poly[[*(acetato-κ²O,O'')*][2-(4-oxo-1,4-dihydroquinolin-1-yl)acetato-*κO¹*]]copper(II)]-*μ*-4,4'-bipyridine-*κ²N:N'*]

Crystal data

[Cu(C₁₁H₈NO₃)(C₂H₃O₂)(C₁₀H₈N₂)]

M_r = 498.97

Triclinic, *P* $\bar{1}$

Hall symbol: -P 1

a = 9.543 (2) Å

b = 11.121 (2) Å

c = 11.381 (2) Å

α = 70.03 (3)°

β = 71.27 (3)°

γ = 88.03 (3)°

V = 1071.3 (5) Å³

Z = 2

F(000) = 514

D_x = 1.547 Mg m⁻³

Mo *Kα* radiation, λ = 0.71073 Å

Cell parameters from 3600 reflections

θ = 1.3–28.0°

μ = 1.07 mm⁻¹

T = 298 K

Block, blue

0.35 × 0.26 × 0.22 mm

Data collection

Bruker APEXII area-detector
diffractometer

Radiation source: fine-focus sealed tube

Graphite monochromator

φ and ω scan

Absorption correction: multi-scan

(*SADABS*; Sheldrick, 1996)

T_{min} = 0.707, *T_{max}* = 0.799

5588 measured reflections

3815 independent reflections

3217 reflections with *I* > 2σ(*I*)

R_{int} = 0.018

θ_{\max} = 25.2°, θ_{\min} = 2.0°

h = -6→11

k = -13→12

l = -13→13

Refinement

Refinement on *F*²

Least-squares matrix: full

R[*F*² > 2σ(*F*²)] = 0.035

wR(*F*²) = 0.087

S = 1.03

3815 reflections

305 parameters

3 restraints

Primary atom site location: structure-invariant

direct methods

Secondary atom site location: difference Fourier
map

Hydrogen site location: inferred from
neighbouring sites

H atoms treated by a mixture of independent
and constrained refinement

w = 1/[σ²(*F_o*²) + (0.0368*P*)² + 0.615*P*]

where *P* = (*F_o*² + 2*F_c*²)/3

(Δ/σ)_{max} < 0.001

Δρ_{max} = 0.27 e Å⁻³

Δρ_{min} = -0.29 e Å⁻³

Special details

Geometry. All e.s.d.'s (except the e.s.d. in the dihedral angle between two l.s. planes) are estimated using the full covariance matrix. The cell e.s.d.'s are taken into account individually in the estimation of e.s.d.'s in distances, angles and torsion angles; correlations between e.s.d.'s in cell parameters are only used when they are defined by crystal symmetry. An approximate (isotropic) treatment of cell e.s.d.'s is used for estimating e.s.d.'s involving l.s. planes.

Refinement. Refinement of *F*² against ALL reflections. The weighted *R*-factor *wR* and goodness of fit *S* are based on *F*², conventional *R*-factors *R* are based on *F*, with *F* set to zero for negative *F*². The threshold expression of *F*² > σ(*F*²) is used only for calculating *R*-factors(gt) etc. and is not relevant to the choice of reflections for refinement. *R*-factors based on *F*² are statistically about twice as large as those based on *F*, and *R*-factors based on ALL data will be even larger.

Fractional atomic coordinates and isotropic or equivalent isotropic displacement parameters (Å²)

	<i>x</i>	<i>y</i>	<i>z</i>	<i>U_{iso}</i> [*] / <i>U_{eq}</i>
Cu1	0.11865 (4)	0.27261 (3)	0.20437 (3)	0.02973 (11)

O1	0.2694 (2)	0.32890 (16)	0.02845 (18)	0.0357 (4)
O2	0.4718 (3)	0.3200 (3)	0.0881 (2)	0.0671 (7)
O3	0.2324 (3)	0.3238 (3)	-0.4737 (2)	0.0694 (7)
O4	-0.0535 (2)	0.22122 (16)	0.36609 (17)	0.0357 (4)
O5	-0.1717 (3)	0.2636 (2)	0.2207 (2)	0.0624 (6)
N1	0.4365 (3)	0.3819 (2)	-0.2305 (2)	0.0394 (6)
N2	0.1132 (2)	0.09355 (19)	0.1985 (2)	0.0319 (5)
N3	0.1123 (2)	-0.54349 (19)	0.1965 (2)	0.0295 (5)
C1	0.4073 (3)	0.3444 (3)	0.0058 (3)	0.0391 (7)
C2	0.5017 (3)	0.4057 (3)	-0.1394 (3)	0.0452 (7)
H2A	0.5156	0.4976	-0.1608	0.054*
H2B	0.5987	0.3726	-0.1526	0.054*
C3	0.3660 (4)	0.4747 (3)	-0.2956 (3)	0.0499 (8)
H3	0.3653	0.5537	-0.2844	0.060*
C4	0.2970 (4)	0.4590 (3)	-0.3756 (3)	0.0562 (9)
H4	0.2525	0.5277	-0.4192	0.067*
C5	0.2900 (3)	0.3401 (3)	-0.3956 (3)	0.0474 (7)
C6	0.3541 (3)	0.2366 (3)	-0.3155 (3)	0.0395 (7)
C7	0.3422 (3)	0.1112 (3)	-0.3155 (3)	0.0494 (8)
H7	0.2886	0.0941	-0.3642	0.059*
C8	0.4068 (4)	0.0137 (3)	-0.2466 (3)	0.0559 (9)
H8	0.3966	-0.0689	-0.2472	0.067*
C9	0.4884 (4)	0.0404 (3)	-0.1749 (3)	0.0559 (9)
H9	0.5364	-0.0246	-0.1304	0.067*
C10	0.4991 (3)	0.1599 (3)	-0.1692 (3)	0.0474 (7)
H10	0.5523	0.1751	-0.1193	0.057*
C11	0.4307 (3)	0.2601 (3)	-0.2377 (3)	0.0377 (6)
C12	-0.1719 (3)	0.2234 (3)	0.3354 (3)	0.0393 (7)
C13	-0.3133 (4)	0.1725 (3)	0.4495 (3)	0.0604 (9)
H13A	-0.3963	0.1882	0.4175	0.091*
H13B	-0.3225	0.2150	0.5119	0.091*
H13C	-0.3117	0.0819	0.4919	0.091*
C14	0.0857 (3)	-0.0086 (2)	0.3104 (3)	0.0402 (7)
H14	0.0704	0.0056	0.3894	0.048*
C15	0.0791 (3)	-0.1324 (2)	0.3141 (3)	0.0399 (7)
H15	0.0585	-0.1998	0.3946	0.048*
C16	0.1030 (3)	-0.1582 (2)	0.1983 (2)	0.0282 (5)
C17	0.1312 (3)	-0.0516 (2)	0.0827 (3)	0.0324 (6)
H17	0.1474	-0.0631	0.0023	0.039*
C18	0.1352 (3)	0.0702 (2)	0.0862 (3)	0.0345 (6)
H18	0.1539	0.1395	0.0074	0.041*
C19	0.1027 (3)	-0.2911 (2)	0.1972 (2)	0.0272 (5)
C20	0.0947 (3)	-0.3960 (2)	0.3098 (3)	0.0341 (6)
H20	0.0870	-0.3833	0.3882	0.041*
C21	0.1165 (3)	-0.3182 (2)	0.0836 (3)	0.0370 (6)
H21	0.1219	-0.2519	0.0053	0.044*
C22	0.1220 (3)	-0.4430 (2)	0.0868 (3)	0.0363 (6)
H22	0.1331	-0.4584	0.0091	0.044*

C23	0.0982 (3)	-0.5181 (2)	0.3063 (3)	0.0346 (6)
H23	0.0903	-0.5864	0.3838	0.041*
O1W	0.2742 (3)	0.2058 (2)	0.3379 (2)	0.0547 (6)
H1W	0.271 (4)	0.232 (3)	0.399 (2)	0.082*
H2W	0.355 (2)	0.232 (4)	0.278 (2)	0.082*

Atomic displacement parameters (Å²)

	U^{11}	U^{22}	U^{33}	U^{12}	U^{13}	U^{23}
Cu1	0.0389 (2)	0.02133 (17)	0.03041 (19)	0.00295 (13)	-0.00988 (14)	-0.01232 (13)
O1	0.0385 (11)	0.0323 (10)	0.0359 (10)	-0.0001 (8)	-0.0065 (9)	-0.0165 (8)
O2	0.0590 (15)	0.103 (2)	0.0461 (14)	0.0028 (14)	-0.0246 (12)	-0.0273 (13)
O3	0.0803 (18)	0.0945 (19)	0.0690 (16)	0.0325 (15)	-0.0506 (15)	-0.0497 (15)
O4	0.0438 (11)	0.0315 (10)	0.0302 (10)	0.0017 (8)	-0.0093 (9)	-0.0115 (8)
O5	0.0623 (15)	0.0840 (17)	0.0379 (13)	0.0036 (13)	-0.0206 (12)	-0.0136 (12)
N1	0.0356 (13)	0.0506 (14)	0.0342 (13)	-0.0017 (11)	-0.0076 (11)	-0.0207 (11)
N2	0.0425 (13)	0.0232 (11)	0.0305 (12)	0.0020 (10)	-0.0107 (10)	-0.0111 (9)
N3	0.0350 (12)	0.0236 (10)	0.0303 (12)	0.0026 (9)	-0.0091 (10)	-0.0114 (9)
C1	0.0439 (17)	0.0395 (15)	0.0404 (16)	0.0009 (13)	-0.0137 (14)	-0.0219 (13)
C2	0.0376 (16)	0.0578 (19)	0.0428 (17)	-0.0086 (14)	-0.0091 (14)	-0.0233 (15)
C3	0.056 (2)	0.0464 (18)	0.052 (2)	0.0063 (16)	-0.0170 (17)	-0.0237 (15)
C4	0.064 (2)	0.057 (2)	0.059 (2)	0.0206 (17)	-0.0325 (19)	-0.0248 (17)
C5	0.0435 (17)	0.066 (2)	0.0431 (17)	0.0159 (15)	-0.0192 (15)	-0.0278 (16)
C6	0.0339 (15)	0.0539 (18)	0.0357 (15)	0.0067 (13)	-0.0089 (13)	-0.0243 (14)
C7	0.0439 (18)	0.065 (2)	0.0473 (19)	0.0033 (16)	-0.0119 (15)	-0.0328 (17)
C8	0.065 (2)	0.0495 (19)	0.052 (2)	0.0059 (17)	-0.0100 (18)	-0.0242 (16)
C9	0.063 (2)	0.053 (2)	0.0460 (19)	0.0169 (17)	-0.0156 (17)	-0.0135 (16)
C10	0.0442 (18)	0.063 (2)	0.0396 (17)	0.0089 (15)	-0.0177 (15)	-0.0200 (15)
C11	0.0330 (15)	0.0481 (16)	0.0300 (14)	0.0026 (13)	-0.0043 (12)	-0.0167 (13)
C12	0.0459 (17)	0.0339 (15)	0.0349 (16)	0.0025 (13)	-0.0085 (13)	-0.0125 (12)
C13	0.051 (2)	0.070 (2)	0.051 (2)	-0.0039 (18)	-0.0039 (17)	-0.0207 (18)
C14	0.064 (2)	0.0297 (14)	0.0273 (14)	0.0032 (13)	-0.0118 (14)	-0.0138 (12)
C15	0.067 (2)	0.0244 (13)	0.0267 (14)	0.0032 (13)	-0.0134 (14)	-0.0086 (11)
C16	0.0316 (14)	0.0248 (13)	0.0306 (14)	0.0030 (11)	-0.0109 (11)	-0.0121 (11)
C17	0.0465 (16)	0.0278 (13)	0.0275 (14)	0.0048 (12)	-0.0149 (12)	-0.0127 (11)
C18	0.0491 (17)	0.0243 (13)	0.0302 (14)	0.0019 (12)	-0.0152 (13)	-0.0074 (11)
C19	0.0307 (14)	0.0231 (12)	0.0290 (14)	0.0035 (10)	-0.0099 (11)	-0.0104 (10)
C20	0.0492 (17)	0.0281 (13)	0.0265 (14)	0.0058 (12)	-0.0106 (12)	-0.0132 (11)
C21	0.0605 (19)	0.0248 (13)	0.0293 (14)	0.0065 (13)	-0.0207 (14)	-0.0084 (11)
C22	0.0569 (18)	0.0272 (13)	0.0325 (15)	0.0066 (13)	-0.0206 (14)	-0.0146 (11)
C23	0.0470 (16)	0.0246 (13)	0.0270 (14)	0.0046 (12)	-0.0074 (12)	-0.0075 (11)
O1W	0.0623 (15)	0.0609 (14)	0.0543 (14)	0.0106 (12)	-0.0273 (12)	-0.0295 (12)

Geometric parameters (Å, °)

Cu1—O4	1.954 (2)	C7—H7	0.9300
Cu1—O1	1.956 (2)	C8—C9	1.396 (5)
Cu1—N3 ⁱ	2.016 (2)	C8—H8	0.9300

Cu1—N2	2.018 (2)	C9—C10	1.362 (4)
Cu1—O1W	2.381 (2)	C9—H9	0.9300
Cu1—O5	2.720 (2)	C10—C11	1.399 (4)
O1—C1	1.263 (3)	C10—H10	0.9300
O2—C1	1.231 (3)	C12—C13	1.501 (4)
O3—C5	1.247 (3)	C13—H13A	0.9600
O4—C12	1.282 (3)	C13—H13B	0.9600
O5—C12	1.226 (3)	C13—H13C	0.9600
N1—C3	1.347 (4)	C14—C15	1.366 (3)
N1—C11	1.389 (3)	C14—H14	0.9300
N1—C2	1.464 (3)	C15—C16	1.391 (3)
N2—C18	1.340 (3)	C15—H15	0.9300
N2—C14	1.341 (3)	C16—C17	1.392 (3)
N3—C23	1.338 (3)	C16—C19	1.482 (3)
N3—C22	1.340 (3)	C17—C18	1.371 (3)
N3—Cu1 ⁱⁱ	2.016 (2)	C17—H17	0.9300
C1—C2	1.524 (4)	C18—H18	0.9300
C2—H2A	0.9700	C19—C20	1.390 (3)
C2—H2B	0.9700	C19—C21	1.391 (3)
C3—C4	1.340 (4)	C20—C23	1.371 (3)
C3—H3	0.9300	C20—H20	0.9300
C4—C5	1.424 (4)	C21—C22	1.376 (3)
C4—H4	0.9300	C21—H21	0.9300
C5—C6	1.457 (4)	C22—H22	0.9300
C6—C7	1.404 (4)	C23—H23	0.9300
C6—C11	1.405 (4)	O1W—H1W	0.830 (10)
C7—C8	1.361 (4)	O1W—H2W	0.827 (10)
O4—Cu1—O1	171.44 (8)	C8—C9—H9	119.4
O4—Cu1—N3 ⁱ	90.50 (9)	C9—C10—C11	120.6 (3)
O1—Cu1—N3 ⁱ	89.24 (9)	C9—C10—H10	119.7
O4—Cu1—N2	90.29 (9)	C11—C10—H10	119.7
O1—Cu1—N2	89.09 (9)	N1—C11—C10	121.7 (3)
N3 ⁱ —Cu1—N2	173.97 (8)	N1—C11—C6	119.2 (3)
O4—Cu1—O1W	88.68 (8)	C10—C11—C6	119.1 (3)
O1—Cu1—O1W	99.84 (8)	O5—C12—O4	123.0 (3)
N3 ⁱ —Cu1—O1W	97.50 (8)	O5—C12—C13	121.2 (3)
N2—Cu1—O1W	88.49 (9)	O4—C12—C13	115.8 (3)
C1—O1—Cu1	125.00 (18)	C12—C13—H13A	109.5
C12—O4—Cu1	109.13 (16)	C12—C13—H13B	109.5
C3—N1—C11	119.7 (2)	H13A—C13—H13B	109.5
C3—N1—C2	119.5 (2)	C12—C13—H13C	109.5
C11—N1—C2	120.4 (2)	H13A—C13—H13C	109.5
C18—N2—C14	117.0 (2)	H13B—C13—H13C	109.5
C18—N2—Cu1	122.92 (17)	N2—C14—C15	123.3 (2)
C14—N2—Cu1	120.03 (17)	N2—C14—H14	118.4
C23—N3—C22	117.0 (2)	C15—C14—H14	118.4
C23—N3—Cu1 ⁱⁱ	119.02 (17)	C14—C15—C16	120.4 (2)

C22—N3—Cu1 ⁱⁱ	124.00 (17)	C14—C15—H15	119.8
O2—C1—O1	127.0 (3)	C16—C15—H15	119.8
O2—C1—C2	117.2 (3)	C15—C16—C17	115.9 (2)
O1—C1—C2	115.7 (2)	C15—C16—C19	122.1 (2)
N1—C2—C1	113.5 (2)	C17—C16—C19	121.9 (2)
N1—C2—H2A	108.9	C18—C17—C16	120.7 (2)
C1—C2—H2A	108.9	C18—C17—H17	119.7
N1—C2—H2B	108.9	C16—C17—H17	119.7
C1—C2—H2B	108.9	N2—C18—C17	122.7 (2)
H2A—C2—H2B	107.7	N2—C18—H18	118.6
C4—C3—N1	123.5 (3)	C17—C18—H18	118.6
C4—C3—H3	118.3	C20—C19—C21	116.1 (2)
N1—C3—H3	118.3	C20—C19—C16	121.3 (2)
C3—C4—C5	121.8 (3)	C21—C19—C16	122.6 (2)
C3—C4—H4	119.1	C23—C20—C19	120.5 (2)
C5—C4—H4	119.1	C23—C20—H20	119.7
O3—C5—C4	123.5 (3)	C19—C20—H20	119.7
O3—C5—C6	122.0 (3)	C22—C21—C19	120.1 (2)
C4—C5—C6	114.5 (3)	C22—C21—H21	119.9
C7—C6—C11	118.4 (3)	C19—C21—H21	119.9
C7—C6—C5	120.7 (3)	N3—C22—C21	123.2 (2)
C11—C6—C5	120.9 (3)	N3—C22—H22	118.4
C8—C7—C6	122.1 (3)	C21—C22—H22	118.4
C8—C7—H7	119.0	N3—C23—C20	123.1 (2)
C6—C7—H7	119.0	N3—C23—H23	118.5
C7—C8—C9	118.6 (3)	C20—C23—H23	118.5
C7—C8—H8	120.7	Cu1—O1W—H1W	124 (3)
C9—C8—H8	120.7	Cu1—O1W—H2W	97 (3)
C10—C9—C8	121.2 (3)	H1W—O1W—H2W	109.3 (17)
C10—C9—H9	119.4		
N3 ⁱ —Cu1—O1—C1	85.9 (2)	C3—N1—C11—C6	1.5 (4)
N2—Cu1—O1—C1	-99.9 (2)	C2—N1—C11—C6	173.5 (3)
O1W—Cu1—O1—C1	-11.6 (2)	C9—C10—C11—N1	178.2 (3)
N3 ⁱ —Cu1—O4—C12	92.99 (17)	C9—C10—C11—C6	-1.7 (4)
N2—Cu1—O4—C12	-81.03 (17)	C7—C6—C11—N1	-176.4 (2)
O1W—Cu1—O4—C12	-169.51 (17)	C5—C6—C11—N1	4.3 (4)
O4—Cu1—N2—C18	138.5 (2)	C7—C6—C11—C10	3.5 (4)
O1—Cu1—N2—C18	-33.0 (2)	C5—C6—C11—C10	-175.8 (3)
O1W—Cu1—N2—C18	-132.8 (2)	Cu1—O4—C12—O5	-6.1 (3)
O4—Cu1—N2—C14	-41.1 (2)	Cu1—O4—C12—C13	173.6 (2)
O1—Cu1—N2—C14	147.5 (2)	C18—N2—C14—C15	-0.1 (4)
O1W—Cu1—N2—C14	47.6 (2)	Cu1—N2—C14—C15	179.4 (2)
Cu1—O1—C1—O2	4.8 (4)	N2—C14—C15—C16	0.7 (5)
Cu1—O1—C1—C2	-172.18 (17)	C14—C15—C16—C17	-0.8 (4)
C3—N1—C2—C1	101.4 (3)	C14—C15—C16—C19	177.5 (3)
C11—N1—C2—C1	-70.6 (3)	C15—C16—C17—C18	0.3 (4)
O2—C1—C2—N1	155.2 (3)	C19—C16—C17—C18	-178.0 (2)

O1—C1—C2—N1	-27.5 (4)	C14—N2—C18—C17	-0.4 (4)
C11—N1—C3—C4	-4.6 (5)	Cu1—N2—C18—C17	-179.9 (2)
C2—N1—C3—C4	-176.6 (3)	C16—C17—C18—N2	0.2 (4)
N1—C3—C4—C5	1.5 (6)	C15—C16—C19—C20	-7.2 (4)
C3—C4—C5—O3	-176.7 (3)	C17—C16—C19—C20	171.1 (3)
C3—C4—C5—C6	4.1 (5)	C15—C16—C19—C21	175.5 (3)
O3—C5—C6—C7	-5.3 (5)	C17—C16—C19—C21	-6.2 (4)
C4—C5—C6—C7	173.8 (3)	C21—C19—C20—C23	-1.0 (4)
O3—C5—C6—C11	174.0 (3)	C16—C19—C20—C23	-178.4 (2)
C4—C5—C6—C11	-6.9 (4)	C20—C19—C21—C22	-0.3 (4)
C11—C6—C7—C8	-2.4 (4)	C16—C19—C21—C22	177.2 (3)
C5—C6—C7—C8	176.9 (3)	C23—N3—C22—C21	-0.7 (4)
C6—C7—C8—C9	-0.7 (5)	Cu1 ⁱⁱ —N3—C22—C21	179.5 (2)
C7—C8—C9—C10	2.6 (5)	C19—C21—C22—N3	1.1 (4)
C8—C9—C10—C11	-1.4 (5)	C22—N3—C23—C20	-0.6 (4)
C3—N1—C11—C10	-178.4 (3)	Cu1 ⁱⁱ —N3—C23—C20	179.2 (2)
C2—N1—C11—C10	-6.5 (4)	C19—C20—C23—N3	1.5 (4)

Symmetry codes: (i) $x, y+1, z$; (ii) $x, y-1, z$.

Hydrogen-bond geometry ($\text{\AA}, ^\circ$)

$D-H\cdots A$	$D-H$	$H\cdots A$	$D\cdots A$	$D-H\cdots A$
O1 W —H1 W \cdots O3 ⁱⁱⁱ	0.83 (1)	1.98 (1)	2.795 (3)	166 (3)
O1 W —H2 W \cdots O2	0.83 (1)	1.99 (2)	2.740 (4)	151 (2)

Symmetry code: (iii) $x, y, z+1$.