

## 4-[[Bis(2-hydroxyethyl)amino]methyl]-6-methoxy-2H-chromen-2-one

Reshma Naik,<sup>a</sup> Ravish Sankolli,<sup>b</sup> G. N. Anil Kumar,<sup>c</sup>  
T. N. Guru Row<sup>b</sup> and Manohar V. Kulkarni<sup>a\*</sup>

<sup>a</sup>P.G. Department of Chemistry, Karnatak University, Dharwad 580 003, India,

<sup>b</sup>Solid State and Structural Chemistry Unit, Indian Institute of Science, Bangalore 560

012, India, and <sup>c</sup>Department of Physics, M.S. Ramaiah Institute of Technology,

Bangalore 560054, India

Correspondence e-mail: manohar274@gmail.com

Received 6 June 2012; accepted 5 July 2012

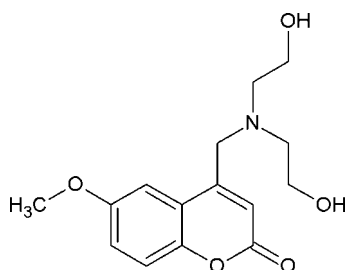
Key indicators: single-crystal X-ray study;  $T = 123$  K; mean  $\sigma(\text{C}-\text{C}) = 0.003$  Å;

R factor = 0.053;  $wR$  factor = 0.149; data-to-parameter ratio = 13.9.

In the title compound,  $\text{C}_{15}\text{H}_{19}\text{NO}_5$ , an intramolecular  $\text{O}-\text{H}\cdots\text{O}$  hydrogen bond links the hydroxyethyl side chains, forming a seven-membered ring. In the crystal, molecules are linked into chains *via*  $\text{O}-\text{H}\cdots\text{O}$  hydrogen bonds along the  $b$  axis. Further, molecules are linked by weak intermolecular  $\text{C}-\text{H}\cdots\text{O}$  and  $\pi-\pi$  stacking interactions [centroid-centroid distance =  $3.707$  (4) Å].

### Related literature

For the properties of coumarins, see: Meng *et al.* (1989); Baures *et al.* (2002); Jadhav *et al.* (2010); Basanagouda *et al.* (2011); Kokila *et al.* (1995); Khan *et al.* (2008). For 4-bromo-methyl-6-methoxy-2H-chromen-2-one, see: Basanagouda *et al.* (2011). For aromatic compounds containing a  $\beta$ -hydroxyethyl side chain, see: Khan *et al.* (2008). For hydrogen-bond motifs, see: Bernstein *et al.* (1995). For  $\text{C}-\text{H}\cdots\text{O}$  interactions, see: Desiraju (2005). For stacking interactions, see: Janiak (2000). For related literature on 4-bromomethyl-2H-chromen-2-one, see: Basanagouda & Kulkarni (2011).



### Experimental

#### Crystal data

$\text{C}_{15}\text{H}_{19}\text{NO}_5$

$M_r = 293.31$

Monoclinic,  $P2_1/c$

$a = 9.3038$  (5) Å

$b = 7.9290$  (5) Å

$c = 19.6216$  (12) Å

$\beta = 92.944$  (5)°

$V = 1445.56$  (15) Å<sup>3</sup>

$Z = 4$

Mo  $K\alpha$  radiation

$\mu = 0.10$  mm<sup>-1</sup>

$T = 123$  K

$0.2 \times 0.18 \times 0.18$  mm

#### Data collection

Bruker SMART APEX CCD

detector diffractometer

Absorption correction: multi-scan

(*SADABS*; Bruker, 2008)

$T_{\min} = 0.98$ ,  $T_{\max} = 0.982$

14012 measured reflections

2694 independent reflections

1994 reflections with  $I > 2\sigma(I)$

$R_{\text{int}} = 0.040$

#### Refinement

$R[F^2 > 2\sigma(F^2)] = 0.053$

$wR(F^2) = 0.149$

$S = 1.02$

2694 reflections

194 parameters

H-atom parameters constrained

$\Delta\rho_{\text{max}} = 0.51$  e Å<sup>-3</sup>

$\Delta\rho_{\text{min}} = -0.26$  e Å<sup>-3</sup>

Table 1

Hydrogen-bond geometry (Å, °).

$D-H\cdots A$	$D-H$	$H\cdots A$	$D\cdots A$	$D-H\cdots A$
$\text{O3}-\text{H3A}\cdots\text{O4}^i$	0.84	1.85	2.685 (3)	174
$\text{O4}-\text{H4A}\cdots\text{O3}$	0.84	2.06	2.875 (3)	164
$\text{C7}-\text{H7}\cdots\text{O5}^{ii}$	0.95	2.56	3.494 (2)	167
$\text{C14}-\text{H14B}\cdots\text{O2}^{iii}$	0.99	2.48	3.206 (3)	130

Symmetry codes: (i)  $-x + 1, y + \frac{1}{2}, -z + \frac{1}{2}$ ; (ii)  $x - 1, y, z$ ; (iii)  $-x, -y, -z + 1$ .

Data collection: *SMART* (Bruker, 2008); cell refinement: *SMART*; data reduction: *SAINTE-Plus* (Bruker, 2008); program(s) used to solve structure: *SHELXS97* (Sheldrick, 2008); program(s) used to refine structure: *SHELXL97* (Sheldrick, 2008); molecular graphics: *ORTEP-3* (Farrugia, 1997) and *CAMERON* (Watkin *et al.*, 1996); software used to prepare material for publication: *PARST* (Nardelli, 1995) and *WinGX* (Farrugia, 1999).

RJN is grateful to DST, Delhi, India, for providing an INSPIRE fellowship.

Supplementary data and figures for this paper are available from the IUCr electronic archives (Reference: ZJ2082).

### References

- Basanagouda, M. & Kulkarni, M. V. (2011). *Synth. Commun.* **41**, 2569–2582.
- Basanagouda, M., Kulkarni, M. V., Sharma, D. & Gupta, V. K. (2011). *J. Chem. Crystallogr.* **41**, 541–544.
- Baures, W., Rush, J. R., Schroeder, S. D. & Beatty, A. M. (2002). *Cryst. Growth. Des.* **2**, 107–110.
- Bernstein, J., Davis, R. E., Shimon, L. & Chang, N.-L. (1995). *Angew. Chem. Int. Ed. Engl.* **34**, 1555–1573.
- Bruker (2008). *SMART*, *SAINTE-Plus* and *SADABS*. Bruker AXS Inc., Madison, Wisconsin, USA.
- Desiraju, G. R. (2005). *Chem. Commun.* pp. 2995–3001.
- Farrugia, L. J. (1997). *J. Appl. Cryst.* **30**, 565.
- Farrugia, L. J. (1999). *J. Appl. Cryst.* **32**, 837–838.
- Jadhav, V. B., Nayak, S. K., Guru Row, T. N. & Kulkarni, M. V. (2010). *Eur. J. Med. Chem.* **45**, 3575–3580.
- Janiak, C. (2000). *J. Chem. Soc. Dalton Trans.* pp. 3885–3896.
- Khan, G. S., Clark, G. R. & Barker, D. (2008). *Acta Cryst.* **E64**, o1253.

Kokila, M. K., Jain, A., Puttaraja., Kulkarni, M. V. & Shivaprakash, N. C. (1995). *Acta Cryst. C* **51**, 2585–2586.  
Meng, J., Fu, D., Yao, X. K., Wang, R. & Matsuura, T. (1989). *Tetrahedron*, **45**, 6979–6986.

Nardelli, M. (1995). *J. Appl. Cryst.* **28**, 659.  
Sheldrick, G. M. (2008). *Acta Cryst. A* **64**, 112–122.  
Watkin, D. J., Prout, C. K. & Pearce, L. J. (1996). *CAMERON*. Chemical Crystallography Laboratory, Oxford, England.

## supporting information

*Acta Cryst.* (2012). E68, o2413–o2414 [https://doi.org/10.1107/S1600536812030759]

**4-[[Bis(2-hydroxyethyl)amino]methyl]-6-methoxy-2H-chromen-2-one****Reshma Naik, Ravish Sankolli, G. N. Anil Kumar, T. N. Guru Row and Manohar V. Kulkarni****S1. Comment**

Coumarins have been shown to be important molecular models, revealing different aspects of solid state organic chemistry. Derivatives of coumarin have been investigated for their solid state dimerisation (Meng *et al.*, 1989), self association in the solid state (Baures *et al.*, 2002), and host of other interesting features which have come to light by their crystal structure studies (Jadhav *et al.*, 2010). Our earlier studies have shown that 4-aryloxymethyl coumarins exhibit a Head-tail packing (Gupta *et al.*, 2011), whereas 4-aryl amino methyl coumarins exhibit a layer like arrangement (Kokila *et al.*, 1995) in solid state.

Diethanol amines are the key intermediate in the synthesis of nitrogen mustards and there are few reports on the structures possessing  $\beta$ -hydroxy ethyl side chain (Khan *et al.*, 2008). In the light of above observations it was thought of considerable interest to study the title compound (Fig. 1) which was intermediate in a series of Nitrogen mustards synthesised for their anti-cancer activities.

The X-ray crystal structures of the title compound reveal that molecule is non-planar. The diethanol amine side chain is oriented towards the coumarin ring with the nitrogen being out of the plane of the molecule shown by the dihedral angles of C7-C8-C11-N1  $-122.53(2)^\circ$  and C9-C8-C11-N1  $62.23(2)^\circ$ . The shortened C2-O5 bond distance of  $1.371(3)\text{\AA}$  compared to the C1-O5 bond distance of  $1.417(3)\text{\AA}$  indicates the delocalization of lone pair of electrons on the O5 oxygen atom across the coumarin ring. The crystal structure of the compound is stabilized by of both intra and intermolecular O-H $\cdots$ O hydrogen bonds and inter molecular C-H $\cdots$ O interactions. The intramolecular O-H $\cdots$ O hydrogen bond connects diethanol amine side chains. In the solid state, molecules are linked via O-H $\cdots$ O hydrogen bonds. Further molecules are connected by weak C-H $\cdots$ O interactions and  $\pi$ - $\pi$  stacking interactions [centroid-centroid distance =  $3.707(4)\text{\AA}$  symmetry  $-x,-y,1-z$ ]. (Table1)

**S2. Experimental**

The mixture of 4-(bromomethyl)-6-methoxy-2H-chromen-2-one (2.68 g, 0.01 mol) and diethanol amine (1.05 g, 0.015 mol) in a 1:1 (25 ml) mixture of ethylalcohol and ethyl acetate was refluxed for 5-6 h. After completion of the reaction, solvent was removed using rotary evaporator. Obtained viscous mass was diluted with ice cold water and extracted with ethyl acetate and purified by column chromatography using hexane/ ethyl acetate (6:4) as eluting solvent. A slow evaporation technique was used to grow crystals suitable for diffraction studies in ethyl acetate/ hexane (1:1.5) solvent mixture. Light yellow solid; yield 70%; m.p.98-100°C; IR (KBr,  $\nu$  in  $\text{cm}^{-1}$ ) 1716 (C=O), 3319 (OH);  $^1\text{H}$  NMR ( $\text{CDCl}_3$ , 300 MHz, TMS):  $\delta$  ppm 2.15 (s, br, 1H, OH,  $\text{D}_2\text{O}$  exchangeable), 2.82 (t, 4H,  $J = 6\text{Hz}$ , 2N- $\text{CH}_2$ ), 3.34 (s, br, 1H, OH,  $\text{D}_2\text{O}$  exchangeable), 3.69 (t, 4H,  $J = 6\text{Hz}$ , 2 $\text{CH}_2$ -OH), 3.86 (s, 3H,  $\text{C}_6$ - $\text{OCH}_3$ ), 3.89 (s, 2H,  $\text{C}_4$ - $\text{CH}_2$ ), 6.67 (s, 1H,  $\text{C}_3$ -H), 7.09 (d, 1H,  $J = 9\text{Hz}$ , Ar-H), 7.23-7.28 (m, 2H, Ar-H). MS  $m/z$  (M+1) 294. Anal. Calcd for  $\text{C}_{15}\text{H}_{19}\text{NO}_5$  (%):Calcd. C, 61.42; H, 6.53; N, 4.78. Found: C, 61.28; H, 6.39; N, 4.62.

## S3. Refinement

All H atoms were fixed geometrically and treated as riding with C-H = 0.95 Å (aromatic), 0.98 Å (methyl) or 0.99 Å (methylene) with  $U_{\text{iso}}(\text{H}) = 1.2U_{\text{eq}}(\text{C})$  or  $U_{\text{iso}}(\text{H}) = 1.5U_{\text{eq}}(\text{C}_{\text{methyl}})$ .

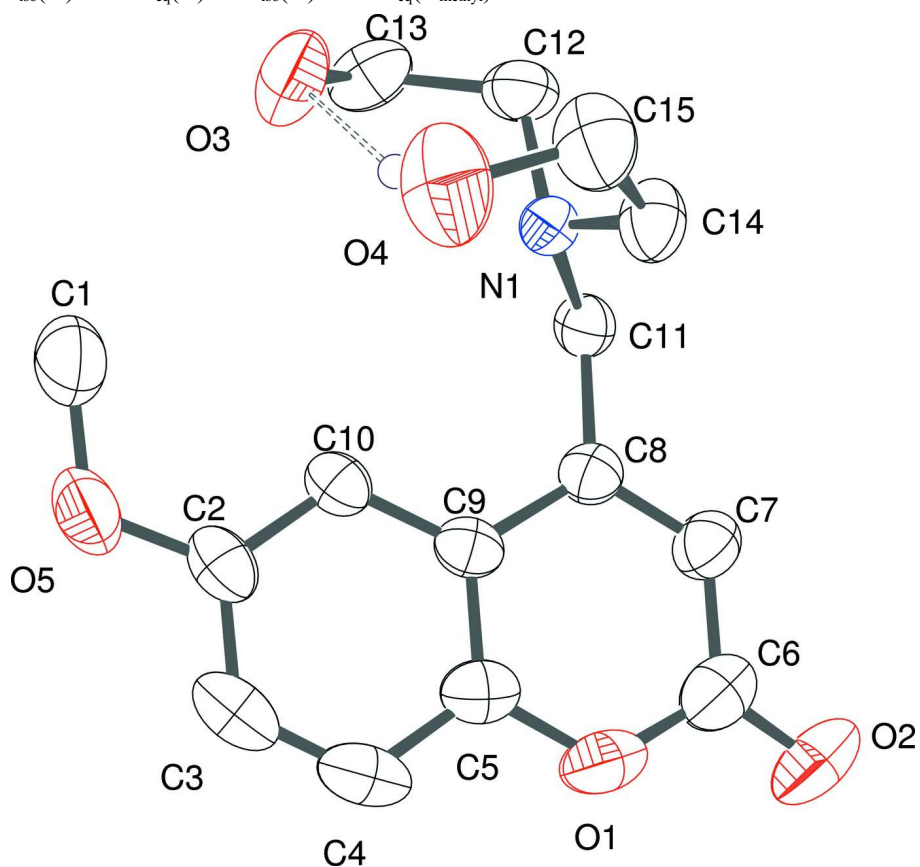
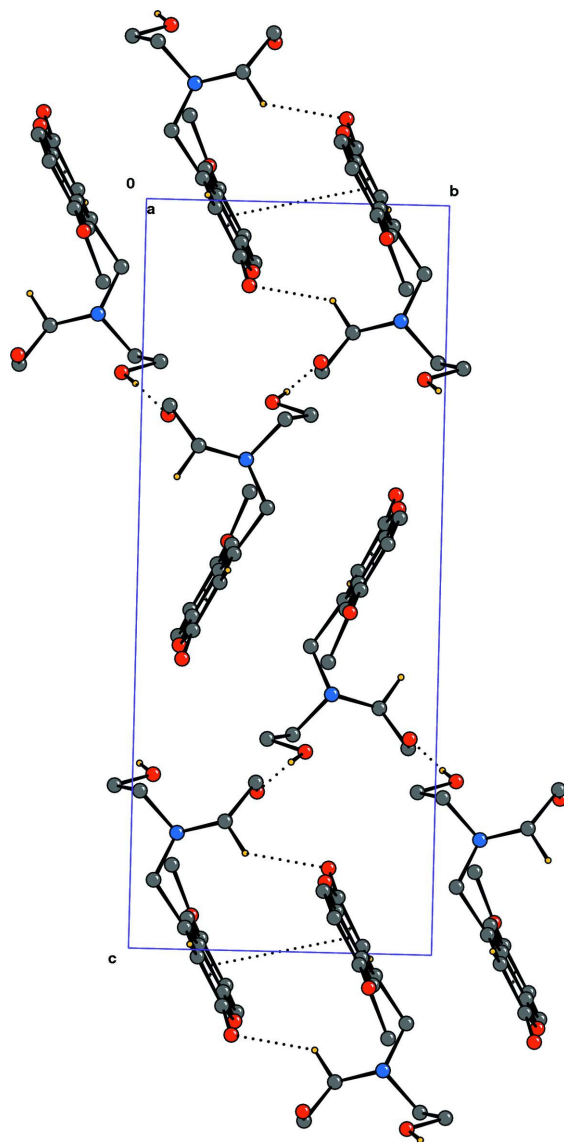


Figure 1

View of the title compound with the atom numbering scheme. Displacement ellipsoids for non-H atoms are drawn at the 50% probability level.



**Figure 2**

Packing diagram showing intermolecular O—H...O and C—H...O interactions

**4-[[Bis(2-hydroxyethyl)amino]methyl]-6-methoxy-2H-chromen-2-one**

*Crystal data*

$C_{15}H_{19}NO_5$

$M_r = 293.31$

Monoclinic,  $P2_1/c$

Hall symbol: -P 2ybc

$a = 9.3038 (5) \text{ \AA}$

$b = 7.9290 (5) \text{ \AA}$

$c = 19.6216 (12) \text{ \AA}$

$\beta = 92.944 (5)^\circ$

$V = 1445.56 (15) \text{ \AA}^3$

$Z = 4$

$F(000) = 624$

$D_x = 1.348 \text{ Mg m}^{-3}$

Mo  $K\alpha$  radiation,  $\lambda = 0.71073 \text{ \AA}$

Cell parameters from 2837 reflections

$\theta = 2.8\text{--}29.6^\circ$

$\mu = 0.10 \text{ mm}^{-1}$

$T = 123 \text{ K}$

Block, white

$0.2 \times 0.18 \times 0.18 \text{ mm}$

*Data collection*

Bruker SMART APEX CCD detector  
diffractometer  
Graphite monochromator  
 $\omega$  scans  
Absorption correction: multi-scan  
(*SADABS*; Bruker, 2008)  
 $T_{\min} = 0.98$ ,  $T_{\max} = 0.982$   
14012 measured reflections

2694 independent reflections  
1994 reflections with  $I > 2\sigma(I)$   
 $R_{\text{int}} = 0.040$   
 $\theta_{\text{max}} = 25.5^\circ$ ,  $\theta_{\text{min}} = 2.8^\circ$   
 $h = -11 \rightarrow 11$   
 $k = -9 \rightarrow 9$   
 $l = -23 \rightarrow 23$

*Refinement*

Refinement on  $F^2$   
Least-squares matrix: full  
 $R[F^2 > 2\sigma(F^2)] = 0.053$   
 $wR(F^2) = 0.149$   
 $S = 1.02$   
2694 reflections  
194 parameters  
0 restraints  
Primary atom site location: structure-invariant  
direct methods  
Secondary atom site location: difference Fourier  
map

Hydrogen site location: inferred from  
neighbouring sites  
H-atom parameters constrained  
 $w = 1/[\sigma^2(F_o^2) + (0.0607P)^2 + 0.6914P]$   
where  $P = (F_o^2 + 2F_c^2)/3$   
 $(\Delta/\sigma)_{\text{max}} < 0.001$   
 $\Delta\rho_{\text{max}} = 0.51 \text{ e } \text{\AA}^{-3}$   
 $\Delta\rho_{\text{min}} = -0.26 \text{ e } \text{\AA}^{-3}$   
Extinction correction: *SHELXL97* (Sheldrick,  
2008)  
Extinction coefficient: 0.0048 (14)

*Special details*

**Geometry.** All esds (except the esd in the dihedral angle between two l.s. planes) are estimated using the full covariance matrix. The cell esds are taken into account individually in the estimation of esds in distances, angles and torsion angles; correlations between esds in cell parameters are only used when they are defined by crystal symmetry. An approximate (isotropic) treatment of cell esds is used for estimating esds involving l.s. planes.

**Refinement.** Refinement of  $F^2$  against ALL reflections. The weighted R-factor  $wR$  and goodness of fit  $S$  are based on  $F^2$ , conventional R-factors  $R$  are based on  $F$ , with  $F$  set to zero for negative  $F^2$ . The threshold expression of  $F^2 > 2\sigma(F^2)$  is used only for calculating R-factors(gt) etc. and is not relevant to the choice of reflections for refinement. R-factors based on  $F^2$  are statistically about twice as large as those based on  $F$ , and R-factors based on ALL data will be even larger.

*Fractional atomic coordinates and isotropic or equivalent isotropic displacement parameters ( $\text{\AA}^2$ )*

	<i>x</i>	<i>y</i>	<i>z</i>	$U_{\text{iso}}^*/U_{\text{eq}}$
C1	0.6985 (3)	0.3637 (5)	0.38763 (14)	0.0794 (9)
H1A	0.6439	0.2862	0.3572	0.119*
H1B	0.7954	0.3787	0.3713	0.119*
H1C	0.6494	0.473	0.3881	0.119*
C2	0.5821 (2)	0.2628 (3)	0.48505 (12)	0.0478 (6)
C3	0.5966 (3)	0.1769 (3)	0.54703 (13)	0.0576 (7)
H3	0.6895	0.1449	0.5648	0.069*
C4	0.4789 (3)	0.1386 (3)	0.58220 (12)	0.0582 (7)
H4	0.4892	0.0812	0.6247	0.07*
C5	0.3436 (3)	0.1843 (3)	0.55550 (11)	0.0477 (6)
C6	0.0911 (3)	0.1865 (3)	0.57398 (13)	0.0587 (6)
C7	0.0712 (2)	0.2717 (3)	0.50921 (11)	0.0489 (6)
H7	-0.0241	0.2978	0.4929	0.059*
C8	0.1804 (2)	0.3160 (3)	0.47075 (10)	0.0384 (5)
C9	0.3255 (2)	0.2694 (3)	0.49382 (10)	0.0388 (5)

C10	0.4483 (2)	0.3085 (3)	0.45839 (11)	0.0403 (5)
H10	0.4391	0.3666	0.416	0.048*
C11	0.1511 (2)	0.4227 (3)	0.40816 (10)	0.0396 (5)
H11A	0.0465	0.446	0.4035	0.048*
H11B	0.2009	0.5322	0.4151	0.048*
C12	0.1882 (2)	0.4748 (3)	0.28977 (11)	0.0533 (6)
H12A	0.1148	0.5608	0.2994	0.064*
H12B	0.1587	0.419	0.2461	0.064*
C13	0.3309 (3)	0.5588 (3)	0.28329 (13)	0.0631 (7)
H13A	0.3242	0.6448	0.2467	0.076*
H13B	0.3614	0.6154	0.3266	0.076*
C14	0.1223 (2)	0.1916 (3)	0.32783 (12)	0.0512 (6)
H14A	0.0226	0.2163	0.3107	0.061*
H14B	0.1171	0.1226	0.3697	0.061*
C15	0.1966 (3)	0.0928 (4)	0.27525 (14)	0.0663 (7)
H15A	0.159	-0.024	0.2744	0.08*
H15B	0.1741	0.1433	0.2298	0.08*
N1	0.19564 (16)	0.3493 (2)	0.34476 (8)	0.0376 (4)
O1	0.2286 (2)	0.1440 (2)	0.59428 (8)	0.0618 (5)
O2	-0.0017 (2)	0.1540 (3)	0.61251 (10)	0.0857 (7)
O3	0.43185 (19)	0.4325 (3)	0.26743 (10)	0.0751 (6)
H3A	0.506	0.4782	0.2532	0.113*
O4	0.34542 (19)	0.0885 (3)	0.28742 (12)	0.0841 (7)
H4A	0.3776	0.1875	0.2893	0.126*
O5	0.70828 (16)	0.2960 (2)	0.45453 (9)	0.0662 (5)

*Atomic displacement parameters (Å<sup>2</sup>)*

	$U^{11}$	$U^{22}$	$U^{33}$	$U^{12}$	$U^{13}$	$U^{23}$
C1	0.0469 (14)	0.131 (3)	0.0604 (17)	-0.0038 (16)	0.0068 (12)	-0.0128 (18)
C2	0.0422 (12)	0.0498 (13)	0.0503 (13)	0.0045 (10)	-0.0086 (10)	-0.0120 (11)
C3	0.0588 (15)	0.0521 (14)	0.0592 (15)	0.0117 (12)	-0.0228 (12)	-0.0096 (12)
C4	0.0791 (18)	0.0484 (14)	0.0449 (13)	0.0037 (12)	-0.0171 (12)	0.0041 (11)
C5	0.0628 (14)	0.0406 (12)	0.0396 (12)	-0.0014 (10)	0.0002 (10)	0.0000 (10)
C6	0.0666 (16)	0.0563 (15)	0.0544 (15)	-0.0097 (13)	0.0150 (13)	0.0012 (12)
C7	0.0491 (12)	0.0529 (13)	0.0453 (13)	-0.0036 (10)	0.0101 (10)	-0.0010 (11)
C8	0.0420 (11)	0.0376 (11)	0.0357 (11)	0.0003 (9)	0.0038 (8)	-0.0056 (9)
C9	0.0465 (12)	0.0340 (11)	0.0354 (11)	0.0012 (9)	-0.0014 (9)	-0.0043 (9)
C10	0.0416 (11)	0.0404 (11)	0.0383 (11)	0.0023 (9)	-0.0026 (9)	-0.0053 (9)
C11	0.0349 (10)	0.0443 (12)	0.0400 (11)	0.0048 (9)	0.0040 (8)	-0.0015 (9)
C12	0.0523 (13)	0.0653 (16)	0.0421 (12)	0.0122 (11)	0.0014 (10)	0.0114 (11)
C13	0.0777 (17)	0.0579 (16)	0.0551 (15)	-0.0041 (14)	0.0164 (13)	0.0162 (12)
C14	0.0431 (12)	0.0556 (14)	0.0556 (14)	-0.0050 (10)	0.0102 (10)	-0.0145 (11)
C15	0.0559 (15)	0.0741 (18)	0.0695 (17)	0.0041 (13)	0.0103 (12)	-0.0231 (15)
N1	0.0332 (8)	0.0461 (10)	0.0336 (9)	0.0010 (7)	0.0036 (7)	0.0016 (7)
O1	0.0804 (12)	0.0614 (11)	0.0441 (9)	-0.0060 (9)	0.0082 (8)	0.0127 (8)
O2	0.0929 (14)	0.0930 (16)	0.0747 (13)	-0.0181 (12)	0.0384 (11)	0.0192 (12)
O3	0.0592 (11)	0.0812 (14)	0.0872 (14)	-0.0104 (10)	0.0272 (10)	0.0099 (11)

O4	0.0599 (11)	0.0792 (14)	0.1143 (17)	0.0198 (10)	0.0140 (11)	-0.0294 (13)
O5	0.0376 (9)	0.0929 (14)	0.0672 (12)	0.0067 (9)	-0.0067 (8)	-0.0087 (10)

*Geometric parameters (Å, °)*

C1—O5	1.417 (3)	C10—H10	0.95
C1—H1A	0.98	C11—N1	1.453 (2)
C1—H1B	0.98	C11—H11A	0.99
C1—H1C	0.98	C11—H11B	0.99
C2—O5	1.370 (3)	C12—N1	1.467 (3)
C2—C10	1.374 (3)	C12—C13	1.497 (3)
C2—C3	1.394 (3)	C12—H12A	0.99
C3—C4	1.358 (4)	C12—H12B	0.99
C3—H3	0.95	C13—O3	1.419 (3)
C4—C5	1.386 (3)	C13—H13A	0.99
C4—H4	0.95	C13—H13B	0.99
C5—O1	1.382 (3)	C14—N1	1.455 (3)
C5—C9	1.388 (3)	C14—C15	1.493 (3)
C6—O2	1.204 (3)	C14—H14A	0.99
C6—O1	1.363 (3)	C14—H14B	0.99
C6—C7	1.443 (3)	C15—O4	1.393 (3)
C7—C8	1.343 (3)	C15—H15A	0.99
C7—H7	0.95	C15—H15B	0.99
C8—C9	1.450 (3)	O3—H3A	0.84
C8—C11	1.505 (3)	O4—H4A	0.84
C9—C10	1.402 (3)		
O5—C1—H1A	109.5	C8—C11—H11A	108.5
O5—C1—H1B	109.5	N1—C11—H11B	108.5
H1A—C1—H1B	109.5	C8—C11—H11B	108.5
O5—C1—H1C	109.5	H11A—C11—H11B	107.5
H1A—C1—H1C	109.5	N1—C12—C13	110.84 (18)
H1B—C1—H1C	109.5	N1—C12—H12A	109.5
O5—C2—C10	124.2 (2)	C13—C12—H12A	109.5
O5—C2—C3	115.36 (19)	N1—C12—H12B	109.5
C10—C2—C3	120.4 (2)	C13—C12—H12B	109.5
C4—C3—C2	120.5 (2)	H12A—C12—H12B	108.1
C4—C3—H3	119.7	O3—C13—C12	107.7 (2)
C2—C3—H3	119.7	O3—C13—H13A	110.2
C3—C4—C5	119.3 (2)	C12—C13—H13A	110.2
C3—C4—H4	120.3	O3—C13—H13B	110.2
C5—C4—H4	120.3	C12—C13—H13B	110.2
O1—C5—C4	116.4 (2)	H13A—C13—H13B	108.5
O1—C5—C9	122.0 (2)	N1—C14—C15	112.37 (19)
C4—C5—C9	121.6 (2)	N1—C14—H14A	109.1
O2—C6—O1	117.1 (2)	C15—C14—H14A	109.1
O2—C6—C7	126.1 (3)	N1—C14—H14B	109.1
O1—C6—C7	116.7 (2)	C15—C14—H14B	109.1



C8—C7—C6	123.4 (2)	H14A—C14—H14B	107.9
C8—C7—H7	118.3	O4—C15—C14	112.7 (2)
C6—C7—H7	118.3	O4—C15—H15A	109.1
C7—C8—C9	118.5 (2)	C14—C15—H15A	109.1
C7—C8—C11	119.67 (19)	O4—C15—H15B	109.1
C9—C8—C11	121.66 (17)	C14—C15—H15B	109.1
C5—C9—C10	118.31 (19)	H15A—C15—H15B	107.8
C5—C9—C8	117.74 (19)	C11—N1—C14	112.88 (16)
C10—C9—C8	123.94 (19)	C11—N1—C12	110.68 (17)
C2—C10—C9	119.9 (2)	C14—N1—C12	114.28 (18)
C2—C10—H10	120.1	C6—O1—C5	121.58 (18)
C9—C10—H10	120.1	C13—O3—H3A	109.5
N1—C11—C8	115.19 (17)	C15—O4—H4A	109.5
N1—C11—H11A	108.5	C2—O5—C1	117.51 (17)
O5—C2—C3—C4	179.4 (2)	C5—C9—C10—C2	0.0 (3)
C10—C2—C3—C4	-0.6 (4)	C8—C9—C10—C2	178.38 (19)
C2—C3—C4—C5	0.7 (4)	C7—C8—C11—N1	-122.5 (2)
C3—C4—C5—O1	-179.1 (2)	C9—C8—C11—N1	62.1 (3)
C3—C4—C5—C9	-0.5 (4)	N1—C12—C13—O3	60.9 (3)
O2—C6—C7—C8	174.7 (3)	N1—C14—C15—O4	43.9 (3)
O1—C6—C7—C8	-3.0 (4)	C8—C11—N1—C14	61.4 (2)
C6—C7—C8—C9	2.9 (3)	C8—C11—N1—C12	-169.10 (17)
C6—C7—C8—C11	-172.6 (2)	C15—C14—N1—C11	-163.4 (2)
O1—C5—C9—C10	178.66 (19)	C15—C14—N1—C12	68.9 (3)
C4—C5—C9—C10	0.1 (3)	C13—C12—N1—C11	94.1 (2)
O1—C5—C9—C8	0.1 (3)	C13—C12—N1—C14	-137.1 (2)
C4—C5—C9—C8	-178.4 (2)	O2—C6—O1—C5	-176.4 (2)
C7—C8—C9—C5	-1.4 (3)	C7—C6—O1—C5	1.6 (3)
C11—C8—C9—C5	174.02 (19)	C4—C5—O1—C6	178.3 (2)
C7—C8—C9—C10	-179.8 (2)	C9—C5—O1—C6	-0.3 (3)
C11—C8—C9—C10	-4.4 (3)	C10—C2—O5—C1	-7.8 (3)
O5—C2—C10—C9	-179.68 (19)	C3—C2—O5—C1	172.2 (2)
C3—C2—C10—C9	0.3 (3)		

## Hydrogen-bond geometry (Å, °)

<i>D</i> —H... <i>A</i>	<i>D</i> —H	H... <i>A</i>	<i>D</i> ... <i>A</i>	<i>D</i> —H... <i>A</i>
O3—H3A...O4 <sup>i</sup>	0.84	1.85	2.685 (3)	174
O4—H4A...O3	0.84	2.06	2.875 (3)	164
C7—H7...O5 <sup>ii</sup>	0.95	2.56	3.494 (2)	167
C14—H14B...O2 <sup>iii</sup>	0.99	2.48	3.206 (3)	130

Symmetry codes: (i)  $-x+1, y+1/2, -z+1/2$ ; (ii)  $x-1, y, z$ ; (iii)  $-x, -y, -z+1$ .