

Acta Crystallographica Section E

## Structure Reports

Online

ISSN 1600-5368

Dichlorido(6-methyl-2,2'-bipyridine- $\kappa^2N,N'$ )cobalt(II)

Niloufar Akbarzadeh Torbati,\* Ali Reza Rezvani and Hamideh Saravani

Department of Chemistry, University of Sistan and Baluchestan, PO Box 98135-674, Zahedan, Iran

Correspondence e-mail: n.akbarzadeh@chem.usb.ac.ir

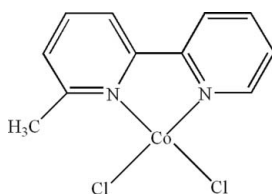
Received 24 September 2012; accepted 1 October 2012

Key indicators: single-crystal X-ray study;  $T = 298$  K; mean  $\sigma(C-C) = 0.007$  Å;  $R$  factor = 0.058;  $wR$  factor = 0.131; data-to-parameter ratio = 22.8.

In the title compound,  $[CoCl_2(C_{11}H_{10}N_2)]$ , the  $Co^{II}$  atom is four-coordinated in a distorted tetrahedral geometry by two N atoms from a 6-methyl-2,2'-bipyridine ligand and two terminal Cl atoms. Intermolecular  $C-H \cdots Cl$  hydrogen bonds and  $\pi-\pi$  stacking interactions between the pyridine rings [centroid-centroid distance =  $3.745(3)$  Å] are present in the crystal.

## Related literature

For related structures, see: Ahmadi *et al.* (2009); Ahmadi, Ebadi *et al.* (2008); Ahmadi, Kalateh *et al.* (2008); Akbarzadeh Torbati *et al.* (2010a,b, 2011); Amani *et al.* (2009); Kalateh *et al.* (2010); Newkome *et al.* (1982); Onggo *et al.* (1990, 2005); Shirvan & Haydari Dezfouli (2012).



## Experimental

## Crystal data

$[CoCl_2(C_{11}H_{10}N_2)]$   
 $M_r = 300.04$   
 Monoclinic,  $P2_1/n$   
 $a = 7.4395(6)$  Å  
 $b = 9.4723(8)$  Å  
 $c = 17.6439(15)$  Å  
 $\beta = 96.131(7)^\circ$

$V = 1236.24(18)$  Å<sup>3</sup>  
 $Z = 4$   
 Mo  $K\alpha$  radiation  
 $\mu = 1.79$  mm<sup>-1</sup>  
 $T = 298$  K  
 $0.20 \times 0.15 \times 0.14$  mm

## Data collection

Bruker APEXII CCD diffractometer  
 Absorption correction: multi-scan (SADABS; Bruker, 2001)  
 $T_{min} = 0.730$ ,  $T_{max} = 0.780$

7959 measured reflections  
 3305 independent reflections  
 2481 reflections with  $I > 2\sigma(I)$   
 $R_{int} = 0.043$

## Refinement

$R[F^2 > 2\sigma(F^2)] = 0.058$   
 $wR(F^2) = 0.131$   
 $S = 1.12$   
 3305 reflections

145 parameters  
 H-atom parameters constrained  
 $\Delta\rho_{max} = 0.85$  e Å<sup>-3</sup>  
 $\Delta\rho_{min} = -0.48$  e Å<sup>-3</sup>

Table 1

Selected bond lengths (Å).

Co1—N1	2.034 (3)	Co1—Cl1	2.2320 (13)
Co1—N2	2.038 (3)	Co1—Cl2	2.2121 (11)

Table 2

Hydrogen-bond geometry (Å, °).

$D-H \cdots A$	$D-H$	$H \cdots A$	$D \cdots A$	$D-H \cdots A$
$Cl1-H1C \cdots Cl1^i$	0.96	2.78	3.706 (6)	163

Symmetry code: (i)  $-x + \frac{3}{2}, y + \frac{1}{2}, -z + \frac{1}{2}$ .

Data collection: APEX2 (Bruker, 2007); cell refinement: SAINT (Bruker, 2007); data reduction: SAINT; program(s) used to solve structure: SHELXS97 (Sheldrick, 2008); program(s) used to refine structure: SHELXL97 (Sheldrick, 2008); molecular graphics: ORTEP-3 (Farrugia, 1997) and Mercury (Macrae *et al.*, 2006); software used to prepare material for publication: SHELXTL (Sheldrick, 2008).

We are grateful to the University of Sistan and Baluchestan and Shahid Beheshti University for financial support.

Supplementary data and figures for this paper are available from the IUCr electronic archives (Reference: HY2591).

## References

- Ahmadi, R., Ebadi, A., Kalateh, K., Norouzi, A. & Amani, V. (2008). *Acta Cryst. E* **64**, m1407.  
 Ahmadi, R., Kalateh, K., Alizadeh, R., Khoshtarkib, Z. & Amani, V. (2009). *Acta Cryst. E* **65**, m1169–m1170.  
 Ahmadi, R., Kalateh, K., Ebadi, A., Amani, V. & Khavasi, H. R. (2008). *Acta Cryst. E* **64**, m1266.  
 Akbarzadeh Torbati, N., Rezvani, A. R., Safari, N., Amani, V. & Khavasi, H. R. (2010a). *Acta Cryst. E* **66**, m1236.  
 Akbarzadeh Torbati, N., Rezvani, A. R., Safari, N., Saravani, H. & Amani, V. (2010b). *Acta Cryst. E* **66**, m1284.  
 Akbarzadeh Torbati, N., Rezvani, A. R., Saravani, H., Amani, V. & Khavasi, H. R. (2011). *Synth. React. Inorg. Met.-Org. Nano-Met. Chem.* **41**, 507–512.  
 Amani, V., Safari, N., Khavasi, H. R. & Akkurt, M. (2009). *Polyhedron*, **28**, 3026–3030.  
 Bruker (2001). SADABS. Bruker AXS Inc., Madison, Wisconsin, USA.  
 Bruker (2007). APEX2 and SAINT. Bruker AXS Inc., Madison, Wisconsin, USA.  
 Farrugia, L. J. (1997). *J. Appl. Cryst.* **30**, 565.  
 Kalateh, K., Ahmadi, R. & Amani, V. (2010). *Acta Cryst. E* **66**, m1241.  
 Macrae, C. F., Edgington, P. R., McCabe, P., Pidcock, E., Shields, G. P., Taylor, R., Towler, M. & van de Streek, J. (2006). *J. Appl. Cryst.* **39**, 453–457.  
 Newkome, G. R., Fronczek, F. R., Gupta, V. K., Puckett, W. E., Pantaleo, D. C. & Kiefer, G. E. (1982). *J. Am. Chem. Soc.* **104**, 1782–1783.  
 Onggo, D., Hook, J. M., Rae, A. D. & Goodwin, H. A. (1990). *Inorg. Chim. Acta*, **173**, 19–30.  
 Onggo, D., Scudder, M. L., Craig, D. C. & Goodwin, H. A. (2005). *J. Mol. Struct.* **738**, 129–136.  
 Sheldrick, G. M. (2008). *Acta Cryst. A* **64**, 112–122.  
 Shirvan, S. A. & Haydari Dezfouli, S. (2012). *Acta Cryst. E* **68**, m1124.

## supporting information

*Acta Cryst.* (2012). E68, m1332 [doi:10.1107/S1600536812041116]

**Dichlorido(6-methyl-2,2'-bipyridine- $\kappa^2$ N,N')cobalt(II)**

**Niloufar Akbarzadeh Torbati, Ali Reza Rezvani and Hamideh Saravani**

**S1. Comment**

In recent years, we have reported the synthesis and crystal structures of [Co(6,6'-dmbipy)Cl<sub>2</sub>], (II) (Akbarzadeh Torbati *et al.*, 2010b), [Co(Ph<sub>2</sub>phen)Cl<sub>2</sub>], (III) (Akbarzadeh Torbati *et al.*, 2010a) and [Co(biq)Cl<sub>2</sub>], (IV) (Akbarzadeh Torbati *et al.*, 2011) (6,6'-dmbipy = 6,6'-dimethyl-2,2'-bipyridine, Ph<sub>2</sub>phen = 2,9-dimethyl-1,10-phenanthroline, biq = 2,2'-biquinoline). 6-Methyl-2,2'-bipyridine (6-mbipy) is a good ligand and a few complexes with 6-mbipy have been prepared, such as that of [Hg(6-mbipy)Cl<sub>2</sub>], (V) (Ahmadi, Ebadi *et al.*, 2008), [Pt(6-mbipy)Cl<sub>4</sub>], (VI) (Amani *et al.*, 2009), [Pb<sub>4</sub>(NO<sub>3</sub>)<sub>8</sub>(6-mbipy)<sub>4</sub>], (VII) (Ahmadi *et al.*, 2009), [Zn(6-mbipy)Br<sub>2</sub>], (VIII) (Kalateh *et al.*, 2010), [Zn(6-mbipy)Cl<sub>2</sub>], (IX) (Ahmadi, Kalateh *et al.*, 2008), [Pd(6-mbipy)Cl<sub>2</sub>], (X) (Newkome *et al.*, 1982), [Ru(6-mbipy)<sub>3</sub>][BF<sub>4</sub>]<sub>2</sub>, (XI) (Onggo *et al.*, 2005), [Fe(6-mbipy)<sub>3</sub>][ClO<sub>4</sub>]<sub>2</sub>.6-mbipy, (XII) (Onggo *et al.*, 1990) and [Cd(6-mbipy)Br<sub>2</sub>(DMSO)], (XIII) (Shirvan & Haydari Dezfuli, 2012). We report herein the synthesis and crystal structure of the title compound, (I).

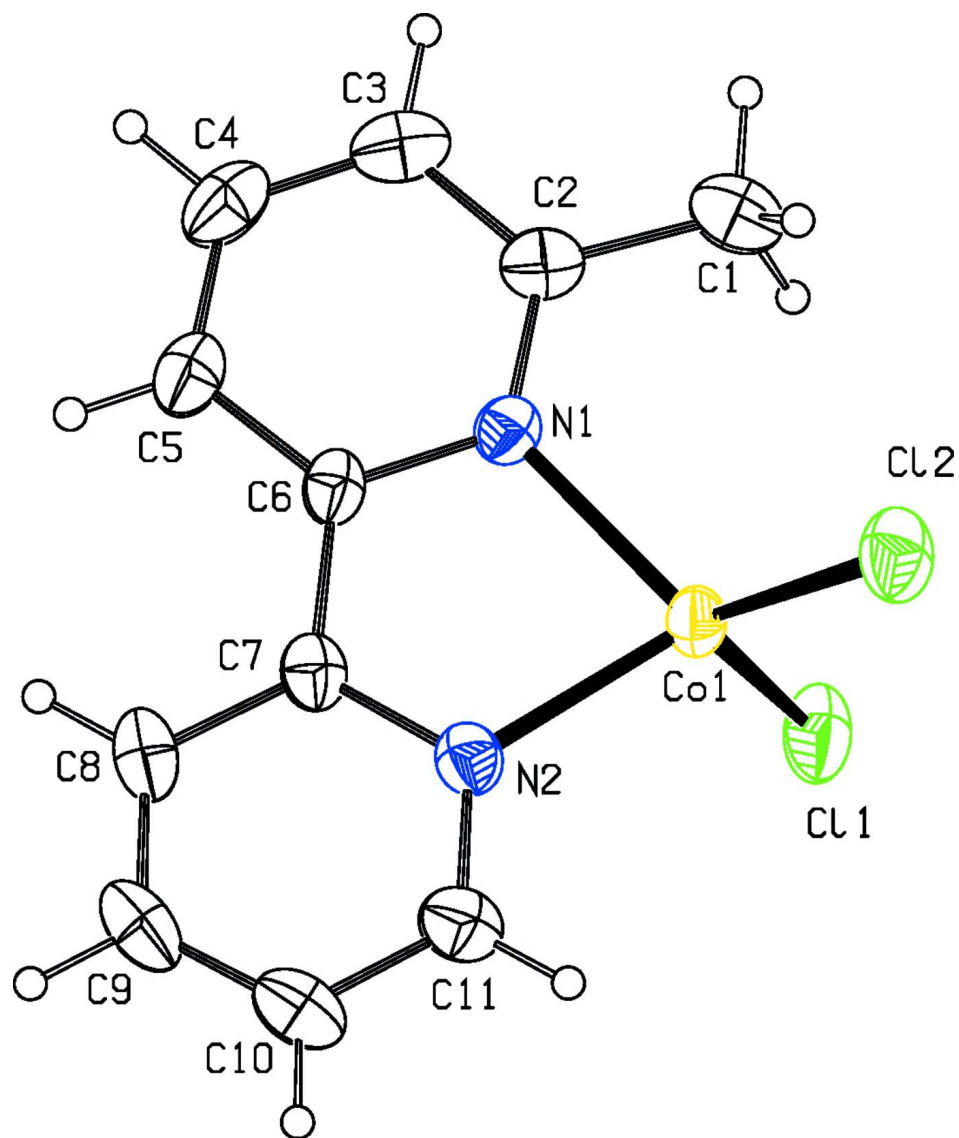
In the title compound (Fig. 1), the Co<sup>II</sup> atom is four-coordinated in a distorted tetrahedral geometry by two N atoms from a 6-methyl-2,2'-bipyridine ligand and two terminal Cl atoms (Table 1). In the crystal, intermolecular C—H...Cl hydrogen bonds (Table 2) and  $\pi$ – $\pi$  contacts (Fig. 2) between the pyridine rings, Cg2...Cg3<sup>i</sup> [centroid–centroid distance = 3.745 (3) Å, symmetry code: (i) 2-x, 2-y, -z, Cg2 and Cg3 are the centroids of the N1/C2–C6 ring and N2/C7–C11 ring, respectively], stabilize the structure.

**S2. Experimental**

For the preparation of the title compound, a solution of 6-methyl-2,2'-bipyridine (0.23 g, 1.34 mmol) in methanol (15 ml) was added to a solution of CoCl<sub>2</sub>.6H<sub>2</sub>O (0.37 g, 1.34 mmol) in acetonitrile (15 ml) and the resulting blue solution was stirred for 15 min at 313 K. This solution was left to evaporate slowly at room temperature. After one week, blue block crystals of the title compound were isolated (yield: 0.30 g, 74.6%).

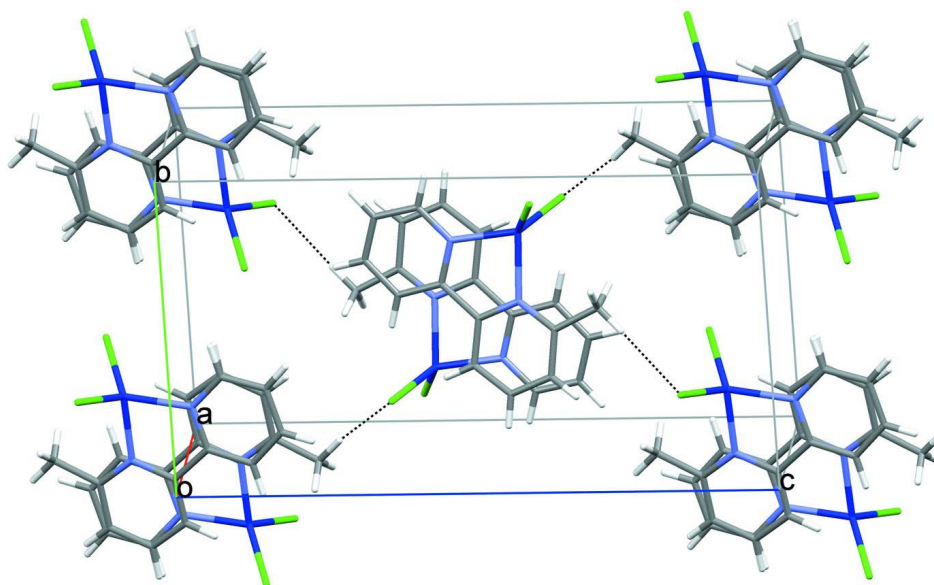
**S3. Refinement**

H atoms were positioned geometrically and refined as riding atoms, with C—H = 0.93 (aromatic) and 0.96 (CH<sub>3</sub>) Å and with  $U_{\text{iso}}(\text{H}) = 1.2U_{\text{eq}}(\text{C})$ .



**Figure 1**

The molecular structure of the title compound. Displacement ellipsoids are drawn at the 30% probability level.

**Figure 2**

A packing diagram of the title compound. Hydrogen bonds are shown as dashed lines.

### Dichlorido(6-methyl-2,2'-bipyridine- $\kappa^2N,N'$ )cobalt(II)

#### Crystal data

[CoCl<sub>2</sub>(C<sub>11</sub>H<sub>10</sub>N<sub>2</sub>)]  
 $M_r = 300.04$   
 Monoclinic,  $P2_1/n$   
 Hall symbol: -P 2yn  
 $a = 7.4395$  (6) Å  
 $b = 9.4723$  (8) Å  
 $c = 17.6439$  (15) Å  
 $\beta = 96.131$  (7)°  
 $V = 1236.24$  (18) Å<sup>3</sup>  
 $Z = 4$

$F(000) = 604$   
 $D_x = 1.612$  Mg m<sup>-3</sup>  
 Mo  $K\alpha$  radiation,  $\lambda = 0.71073$  Å  
 Cell parameters from 998 reflections  
 $\theta = 2.3$ – $29.3$ °  
 $\mu = 1.79$  mm<sup>-1</sup>  
 $T = 298$  K  
 Block, blue  
 $0.20 \times 0.15 \times 0.14$  mm

#### Data collection

Bruker APEXII CCD  
 diffractometer  
 Radiation source: fine-focus sealed tube  
 Graphite monochromator  
 $\varphi$  and  $\omega$  scans  
 Absorption correction: multi-scan  
 (SADABS; Bruker, 2001)  
 $T_{\min} = 0.730$ ,  $T_{\max} = 0.780$

7959 measured reflections  
 3305 independent reflections  
 2481 reflections with  $I > 2\sigma(I)$   
 $R_{\text{int}} = 0.043$   
 $\theta_{\max} = 29.3$ °,  $\theta_{\min} = 2.3$ °  
 $h = -10 \rightarrow 10$   
 $k = -11 \rightarrow 12$   
 $l = -24 \rightarrow 23$

#### Refinement

Refinement on  $F^2$   
 Least-squares matrix: full  
 $R[F^2 > 2\sigma(F^2)] = 0.058$   
 $wR(F^2) = 0.131$   
 $S = 1.12$   
 3305 reflections  
 145 parameters

0 restraints  
 Primary atom site location: structure-invariant  
 direct methods  
 Secondary atom site location: difference Fourier  
 map  
 Hydrogen site location: inferred from  
 neighbouring sites

H-atom parameters constrained  
 $w = 1/[\sigma^2(F_o^2) + (0.0444P)^2 + 1.4058P]$   
 where  $P = (F_o^2 + 2F_c^2)/3$

$(\Delta/\sigma)_{\max} < 0.001$   
 $\Delta\rho_{\max} = 0.85 \text{ e } \text{\AA}^{-3}$   
 $\Delta\rho_{\min} = -0.48 \text{ e } \text{\AA}^{-3}$

*Special details*

**Geometry.** All e.s.d.'s (except the e.s.d. in the dihedral angle between two l.s. planes) are estimated using the full covariance matrix. The cell e.s.d.'s are taken into account individually in the estimation of e.s.d.'s in distances, angles and torsion angles; correlations between e.s.d.'s in cell parameters are only used when they are defined by crystal symmetry. An approximate (isotropic) treatment of cell e.s.d.'s is used for estimating e.s.d.'s involving l.s. planes.

**Refinement.** Refinement of  $F^2$  against ALL reflections. The weighted  $R$ -factor  $wR$  and goodness of fit  $S$  are based on  $F^2$ , conventional  $R$ -factors  $R$  are based on  $F$ , with  $F$  set to zero for negative  $F^2$ . The threshold expression of  $F^2 > \sigma(F^2)$  is used only for calculating  $R$ -factors(gt) *etc.* and is not relevant to the choice of reflections for refinement.  $R$ -factors based on  $F^2$  are statistically about twice as large as those based on  $F$ , and  $R$ -factors based on ALL data will be even larger.

*Fractional atomic coordinates and isotropic or equivalent isotropic displacement parameters ( $\text{\AA}^2$ )*

	<i>x</i>	<i>y</i>	<i>z</i>	$U_{\text{iso}}^*/U_{\text{eq}}$
C1	0.6700 (9)	0.9546 (6)	0.2127 (3)	0.0841 (16)
H1A	0.7822	0.9086	0.2296	0.101*
H1B	0.5749	0.8858	0.2064	0.101*
H1C	0.6430	1.0233	0.2498	0.101*
C2	0.6857 (6)	1.0262 (5)	0.1385 (3)	0.0549 (10)
C3	0.6639 (6)	1.1710 (5)	0.1282 (3)	0.0661 (12)
H3	0.6359	1.2279	0.1683	0.079*
C4	0.6843 (7)	1.2286 (5)	0.0589 (3)	0.0679 (13)
H4	0.6706	1.3254	0.0518	0.081*
C5	0.7246 (6)	1.1457 (4)	-0.0005 (3)	0.0572 (10)
H5	0.7389	1.1850	-0.0478	0.069*
C6	0.7439 (4)	1.0016 (4)	0.0116 (2)	0.0430 (8)
C7	0.7826 (5)	0.8999 (4)	-0.0480 (2)	0.0446 (8)
C8	0.8106 (6)	0.9397 (5)	-0.1220 (2)	0.0582 (11)
H8	0.8110	1.0345	-0.1357	0.070*
C9	0.8380 (7)	0.8356 (6)	-0.1748 (3)	0.0686 (13)
H9	0.8574	0.8599	-0.2243	0.082*
C10	0.8363 (7)	0.6973 (6)	-0.1535 (3)	0.0703 (13)
H10	0.8512	0.6264	-0.1888	0.084*
C11	0.8125 (6)	0.6635 (5)	-0.0799 (3)	0.0601 (11)
H11	0.8138	0.5690	-0.0656	0.072*
N1	0.7245 (4)	0.9445 (3)	0.08066 (17)	0.0431 (7)
N2	0.7872 (4)	0.7629 (3)	-0.02746 (18)	0.0465 (7)
Co1	0.76711 (7)	0.73253 (5)	0.08569 (3)	0.04458 (16)
Cl1	1.03449 (15)	0.68766 (14)	0.15119 (7)	0.0683 (3)
Cl2	0.54399 (16)	0.59698 (13)	0.11655 (7)	0.0673 (3)

*Atomic displacement parameters ( $\text{\AA}^2$ )*

	$U^{11}$	$U^{22}$	$U^{33}$	$U^{12}$	$U^{13}$	$U^{23}$
C1	0.114 (5)	0.085 (4)	0.056 (3)	0.010 (3)	0.024 (3)	-0.014 (3)
C2	0.049 (2)	0.055 (2)	0.061 (2)	0.0011 (18)	0.0059 (18)	-0.0083 (19)

C3	0.056 (2)	0.061 (3)	0.081 (3)	0.005 (2)	0.005 (2)	-0.021 (2)
C4	0.060 (3)	0.040 (2)	0.103 (4)	-0.0006 (19)	0.004 (3)	0.003 (2)
C5	0.052 (2)	0.046 (2)	0.073 (3)	-0.0005 (17)	0.003 (2)	0.013 (2)
C6	0.0343 (16)	0.0436 (18)	0.050 (2)	-0.0035 (14)	0.0007 (14)	0.0110 (15)
C7	0.0353 (16)	0.050 (2)	0.048 (2)	-0.0082 (15)	0.0024 (14)	0.0068 (16)
C8	0.054 (2)	0.070 (3)	0.049 (2)	-0.012 (2)	0.0021 (18)	0.018 (2)
C9	0.066 (3)	0.102 (4)	0.039 (2)	-0.010 (3)	0.0119 (19)	0.003 (2)
C10	0.073 (3)	0.090 (4)	0.050 (3)	-0.005 (3)	0.015 (2)	-0.015 (2)
C11	0.061 (2)	0.063 (3)	0.057 (3)	-0.003 (2)	0.012 (2)	-0.009 (2)
N1	0.0412 (15)	0.0412 (15)	0.0465 (17)	0.0016 (12)	0.0027 (13)	0.0022 (13)
N2	0.0442 (15)	0.0499 (17)	0.0458 (16)	-0.0021 (13)	0.0070 (13)	0.0040 (14)
Co1	0.0474 (3)	0.0416 (3)	0.0458 (3)	0.0009 (2)	0.0098 (2)	0.0099 (2)
Cl1	0.0500 (5)	0.0788 (8)	0.0754 (7)	0.0019 (5)	0.0033 (5)	0.0350 (6)
Cl2	0.0590 (6)	0.0654 (7)	0.0786 (8)	-0.0129 (5)	0.0130 (5)	0.0186 (6)

*Geometric parameters (Å, °)*

C1—C2	1.490 (7)	C7—N2	1.346 (5)
C1—H1A	0.9600	C7—C8	1.397 (5)
C1—H1B	0.9600	C8—C9	1.386 (7)
C1—H1C	0.9600	C8—H8	0.9300
C2—N1	1.336 (5)	C9—C10	1.363 (8)
C2—C3	1.391 (6)	C9—H9	0.9300
C3—C4	1.363 (7)	C10—C11	1.367 (6)
C3—H3	0.9300	C10—H10	0.9300
C4—C5	1.368 (7)	C11—N2	1.347 (5)
C4—H4	0.9300	C11—H11	0.9300
C5—C6	1.386 (5)	Co1—N1	2.034 (3)
C5—H5	0.9300	Co1—N2	2.038 (3)
C6—N1	1.355 (5)	Co1—Cl1	2.2320 (13)
C6—C7	1.477 (5)	Co1—Cl2	2.2121 (11)
C2—C1—H1A	109.5	C9—C8—C7	118.9 (4)
C2—C1—H1B	109.5	C9—C8—H8	120.6
H1A—C1—H1B	109.5	C7—C8—H8	120.6
C2—C1—H1C	109.5	C10—C9—C8	119.5 (4)
H1A—C1—H1C	109.5	C10—C9—H9	120.2
H1B—C1—H1C	109.5	C8—C9—H9	120.2
N1—C2—C3	120.2 (4)	C9—C10—C11	119.5 (5)
N1—C2—C1	116.8 (4)	C9—C10—H10	120.3
C3—C2—C1	122.9 (4)	C11—C10—H10	120.3
C4—C3—C2	119.3 (4)	N2—C11—C10	122.1 (5)
C4—C3—H3	120.4	N2—C11—H11	119.0
C2—C3—H3	120.4	C10—C11—H11	119.0
C3—C4—C5	120.8 (4)	C2—N1—C6	120.6 (3)
C3—C4—H4	119.6	C2—N1—Co1	125.7 (3)
C5—C4—H4	119.6	C6—N1—Co1	113.7 (2)
C4—C5—C6	118.4 (4)	C7—N2—C11	119.3 (3)

C4—C5—H5	120.8	C7—N2—Co1	113.4 (3)
C6—C5—H5	120.8	C11—N2—Co1	127.2 (3)
N1—C6—C5	120.7 (4)	N1—Co1—N2	81.08 (13)
N1—C6—C7	115.3 (3)	N1—Co1—Cl2	117.79 (9)
C5—C6—C7	123.9 (4)	N2—Co1—Cl2	117.29 (10)
N2—C7—C8	120.7 (4)	N1—Co1—Cl1	109.69 (10)
N2—C7—C6	116.0 (3)	N2—Co1—Cl1	112.31 (10)
C8—C7—C6	123.3 (4)	Cl2—Co1—Cl1	114.38 (5)
N1—C2—C3—C4	-0.6 (7)	C5—C6—N1—Co1	-178.0 (3)
C1—C2—C3—C4	178.6 (5)	C7—C6—N1—Co1	3.0 (4)
C2—C3—C4—C5	0.4 (7)	C8—C7—N2—Cl1	-2.5 (6)
C3—C4—C5—C6	0.2 (7)	C6—C7—N2—Cl1	176.6 (3)
C4—C5—C6—N1	-0.5 (6)	C8—C7—N2—Co1	174.3 (3)
C4—C5—C6—C7	178.4 (4)	C6—C7—N2—Co1	-6.6 (4)
N1—C6—C7—N2	2.4 (5)	C10—C11—N2—C7	0.9 (7)
C5—C6—C7—N2	-176.5 (4)	C10—C11—N2—Co1	-175.4 (4)
N1—C6—C7—C8	-178.5 (3)	C2—N1—Co1—N2	176.8 (3)
C5—C6—C7—C8	2.6 (6)	C6—N1—Co1—N2	-5.0 (2)
N2—C7—C8—C9	1.9 (6)	C2—N1—Co1—Cl2	60.6 (3)
C6—C7—C8—C9	-177.1 (4)	C6—N1—Co1—Cl2	-121.3 (2)
C7—C8—C9—C10	0.2 (7)	C2—N1—Co1—Cl1	-72.6 (3)
C8—C9—C10—C11	-1.8 (8)	C6—N1—Co1—Cl1	105.6 (2)
C9—C10—C11—N2	1.2 (8)	C7—N2—Co1—N1	6.3 (3)
C3—C2—N1—C6	0.3 (6)	C11—N2—Co1—N1	-177.1 (4)
C1—C2—N1—C6	-178.9 (4)	C7—N2—Co1—Cl2	123.1 (2)
C3—C2—N1—Co1	178.3 (3)	C11—N2—Co1—Cl2	-60.4 (4)
C1—C2—N1—Co1	-0.9 (6)	C7—N2—Co1—Cl1	-101.4 (3)
C5—C6—N1—C2	0.3 (5)	C11—N2—Co1—Cl1	75.2 (4)
C7—C6—N1—C2	-178.7 (3)		

Hydrogen-bond geometry (Å, °)

<i>D</i> —H... <i>A</i>	<i>D</i> —H	H... <i>A</i>	<i>D</i> ... <i>A</i>	<i>D</i> —H... <i>A</i>
C1—H1C...Cl1 <sup>i</sup>	0.96	2.78	3.706 (6)	163

Symmetry code: (i)  $-x+3/2, y+1/2, -z+1/2$ .