

Acta Crystallographica Section E

Structure Reports

Online

ISSN 1600-5368

(+)-(1*S*,5*R*,6*R*)-6-[(*S*)-1-Hydroxy-2-(methoxymethoxy)ethyl]-1-methyl-3-trichloromethyl-2-aza-4,7-dioxabicyclo[3.3.0]oct-2-en-8-one

 Takeshi Oishi,^{a*} Hiroki Oishi,^b Syun Tsuzaki,^b Takaaki Sato^b and Noritaka Chida^b

^aSchool of Medicine, Keio University, Hiyoshi 4-1-1, Kohoku-ku, Yokohama 223-8521, Japan, and ^bDepartment of Applied Chemistry, Faculty of Science and Technology, Keio University, Hiyoshi 3-14-1, Kohoku-ku, Yokohama 223-8522, Japan

Correspondence e-mail: oec@a6.keio.jp

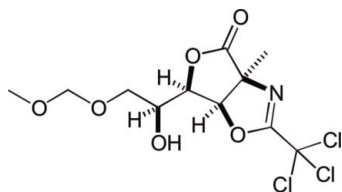
Received 9 October 2012; accepted 15 October 2012

 Key indicators: single-crystal X-ray study; $T = 90$ K; mean $\sigma(\text{C}-\text{C}) = 0.003$ Å; R factor = 0.027; wR factor = 0.069; data-to-parameter ratio = 12.2.

In the title compound, $\text{C}_{11}\text{H}_{14}\text{Cl}_3\text{NO}_6$, the fused five-membered oxazoline and tetrahydrofuran rings are essentially planar with maximum deviations of 0.069 (1) and 0.031 (1) Å, respectively, and make a dihedral angle of 64.23 (11)° with each other. In the crystal, molecules are linked by $\text{O}-\text{H}\cdots\text{O}$ and $\text{C}-\text{H}\cdots\text{O}$ hydrogen bonds, forming chains along the b -axis direction. Further $\text{C}-\text{H}\cdots\text{O}$ hydrogen bonds are observed between the chains.

Related literature

For the synthesis, see: Oishi *et al.* (2012). For the isolation of sphingofungins, see: VanMiddlesworth, Giacobbe *et al.* (1992); VanMiddlesworth, Dufresne *et al.* (1992); Horn *et al.* (1992).



Experimental

Crystal data

$\text{C}_{11}\text{H}_{14}\text{Cl}_3\text{NO}_6$
 $M_r = 362.58$
 Monoclinic, $P2_1$
 $a = 8.9311$ (7) Å

$b = 6.0283$ (4) Å
 $c = 13.8694$ (10) Å
 $\beta = 99.699$ (2)°
 $V = 736.05$ (9) Å³

$Z = 2$
 Mo $K\alpha$ radiation
 $\mu = 0.65$ mm⁻¹

$T = 90$ K
 $0.50 \times 0.25 \times 0.16$ mm

Data collection

Bruker D8 goniometer diffractometer
 Absorption correction: multi-scan (SADABS; Bruker, 2012)
 $T_{\min} = 0.738$, $T_{\max} = 0.904$

6662 measured reflections
 2364 independent reflections
 2291 reflections with $I > 2\sigma(I)$
 $R_{\text{int}} = 0.028$

Refinement

$R[F^2 > 2\sigma(F^2)] = 0.027$
 $wR(F^2) = 0.069$
 $S = 1.34$
 2364 reflections
 193 parameters
 1 restraint

H-atom parameters constrained
 $\Delta\rho_{\max} = 0.37$ e Å⁻³
 $\Delta\rho_{\min} = -0.22$ e Å⁻³
 Absolute structure: Flack (1983), 947 Friedel pairs
 Flack parameter: 0.01 (5)

Table 1

Hydrogen-bond geometry (Å, °).

$D-\text{H}\cdots A$	$D-\text{H}$	$\text{H}\cdots A$	$D\cdots A$	$D-\text{H}\cdots A$
$\text{O}12-\text{H}12\cdots\text{O}15^i$	0.84	1.90	2.695 (2)	157
$\text{C}6-\text{H}6\cdots\text{O}9^{\text{ii}}$	1.00	2.43	3.402 (3)	164
$\text{C}17-\text{H}17\text{C}\cdots\text{O}9^{\text{iii}}$	0.98	2.53	3.320 (3)	137

 Symmetry codes: (i) $x, y-1, z$; (ii) $x, y+1, z$; (iii) $-x+1, y+\frac{1}{2}, -z+1$.

Data collection: APEX2 (Bruker, 2012); cell refinement: SAINT (Bruker, 2012); data reduction: SAINT; program(s) used to solve structure: SHELXS97 (Sheldrick, 2008); program(s) used to refine structure: SHELXL97 (Sheldrick, 2008); molecular graphics: Mercury (Macrae *et al.*, 2006); software used to prepare material for publication: SHELXL97.

We thank Professor S. Ohba, Professor N. Yoshioka and Dr C. Maeda (Keio University, Japan) for providing valuable advice.

Supplementary data and figures for this paper are available from the IUCr electronic archives (Reference: IS5207).

References

- Bruker (2012). APEX2, SAINT and SADABS. Bruker AXS Inc., Madison, Wisconsin, USA.
- Flack, H. D. (1983). *Acta Cryst.* **A39**, 876–881.
- Horn, W. S., Smith, J. L., Bills, G. F., Raghoobar, S. L., Helms, G. L., Kurts, M. B., Marrinan, J. A., Frommer, B. R., Thornton, R. A. & Mandala, S. M. (1992). *J. Antibiot.* **45**, 1692–1696.
- Macrae, C. F., Edgington, P. R., McCabe, P., Pidcock, E., Shields, G. P., Taylor, R., Towler, M. & van de Streek, J. (2006). *J. Appl. Cryst.* **39**, 453–457.
- Oishi, H., Tsuzaki, S., Sato, T. & Chida, N. (2012). In preparation.
- Sheldrick, G. M. (2008). *Acta Cryst.* **A64**, 112–122.
- VanMiddlesworth, F., Dufresne, C., Wincott, F. E., Mosley, R. T. & Wilson, K. E. (1992). *Tetrahedron Lett.* **33**, 297–300.
- VanMiddlesworth, F., Giacobbe, R. A., Lopez, M., Garrity, G., Bland, J. A., Bartizal, K., Fromtling, R. A., Polishook, J., Zweerink, M., Edison, A. M., Rozdilsky, W., Wilson, K. E. & Monaghan, R. L. (1992). *J. Antibiot.* **45**, 861–867.

supporting information

Acta Cryst. (2012). E68, o3185 [doi:10.1107/S1600536812042912]

(+)-(1*S*,5*R*,6*R*)-6-[(*S*)-1-Hydroxy-2-(methoxymethoxy)ethyl]-1-methyl-3-tri-chloromethyl-2-aza-4,7-dioxabicyclo[3.3.0]oct-2-en-8-one

Takeshi Oishi, Hiroki Oishi, Syun Tsuzaki, Takaaki Sato and Noritaka Chida

S1. Comment

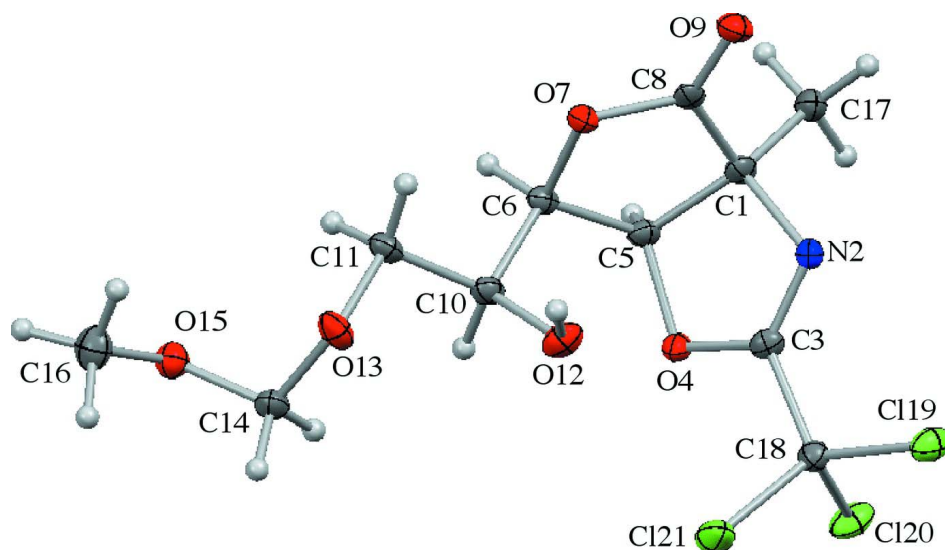
Sphingofungins are natural antifungal agents isolated from *Aspergillus* and reported to be potent inhibitors of the biosynthesis of sphingolipids (VanMiddlesworth, Giacobbe *et al.*, 1992; VanMiddlesworth, Dufresne *et al.*, 1992; Horn *et al.*, 1992). The title compound (I), C₁₁H₁₄Cl₃NO₆, which has four contiguous stereogenic center including a tetra-substituted carbon with nitrogen (Fig. 1), was provided in a synthetic study on the natural products sphingofungins from _D-ribose (Oishi *et al.*, 2012). The absolute configurations were confirmed by the X-ray analysis as C1*S*, C5*R*, C6*R* and C10*S*. The crystal packing was stabilized by an intermolecular O—H···O hydrogen bond, forming molecular a chain along the *b* axis (Fig. 2). There are also C—H···O hydrogen bonds and intermolecular Cl···O short contacts, Cl19···O4 (*x*, *y* - 1, *z*) and Cl20···O7 (*x* + 1, *y*, *z*) being 3.070 (2) and 3.142 (2) Å, respectively.

S2. Experimental

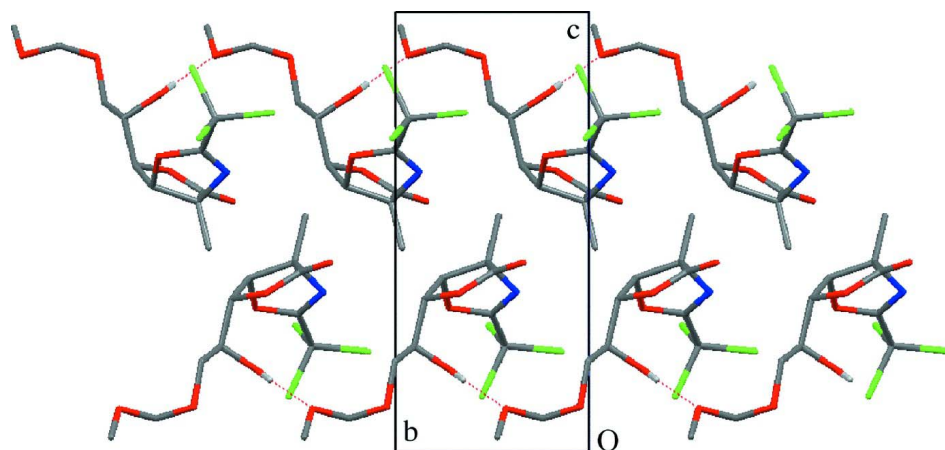
The title compound was obtained in a synthetic study of sphingofungins from _D-ribose (Oishi *et al.*, 2012), and recrystallized from ethyl acetate solution. $[\alpha]_D^{27} +83.1$ (*c* 0.345, CHCl₃); m.p. 409.7–411.2 K.

S3. Refinement

C-bound H atoms were positioned geometrically with C—H = 0.98–1.00 Å, and constrained to ride on their parent atoms with $U_{\text{iso}}(\text{H}) = 1.2U_{\text{eq}}(\text{C})$ or $1.5U_{\text{eq}}(\text{methyl C})$. The H atom of hydroxyl group (O12) was placed guided by difference maps, with O—H = 0.84 Å and with $U_{\text{iso}}(\text{H}) = 1.5U_{\text{eq}}(\text{O})$. Three reflections (6 3 6, 6 3 7, 0 1 16) have been omitted in the final refinement.

**Figure 1**

The molecular structure of the title compound, with atom labels and 50% probability displacement ellipsoids for non-H atoms.

**Figure 2**

The crystal packing of the title compound, viewed down the *a* axis. The dashed lines indicate O—H...O hydrogen bonds.

(+)-(1*S*,5*R*,6*R*)-6-[(*S*)-1-Hydroxy-2-(methoxymethoxy)ethyl]-1-methyl-3-trichloromethyl-2-aza-4,7-dioxabicyclo[3.3.0]oct-2-en-8-one

Crystal data

$C_{11}H_{14}Cl_3NO_6$

$M_r = 362.58$

Monoclinic, $P2_1$

$a = 8.9311(7) \text{ \AA}$

$b = 6.0283(4) \text{ \AA}$

$c = 13.8694(10) \text{ \AA}$

$\beta = 99.699(2)^\circ$

$V = 736.05(9) \text{ \AA}^3$

$Z = 2$

$F(000) = 372$

$D_x = 1.636 \text{ Mg m}^{-3}$

Melting point: 409.7 K

Mo $K\alpha$ radiation, $\lambda = 0.71073 \text{ \AA}$

Cell parameters from 5778 reflections

$\theta = 2.3\text{--}25.1^\circ$

$\mu = 0.65 \text{ mm}^{-1}$

$T = 90 \text{ K}$

Prism, colourless

$0.50 \times 0.25 \times 0.16 \text{ mm}$

Data collection

Bruker D8 goniometer diffractometer	6662 measured reflections 2364 independent reflections
Radiation source: fine-focus sealed tube	2291 reflections with $I > 2\sigma(I)$
Graphite monochromator	$R_{\text{int}} = 0.028$
Detector resolution: 10.4167 pixels mm^{-1}	$\theta_{\text{max}} = 25.1^\circ$, $\theta_{\text{min}} = 2.3^\circ$
ω scans	$h = -10 \rightarrow 10$
Absorption correction: multi-scan (SADABS; Bruker, 2012)	$k = -7 \rightarrow 6$
$T_{\text{min}} = 0.738$, $T_{\text{max}} = 0.904$	$l = -16 \rightarrow 16$

Refinement

Refinement on F^2	Hydrogen site location: inferred from neighbouring sites
Least-squares matrix: full	H-atom parameters constrained
$R[F^2 > 2\sigma(F^2)] = 0.027$	$w = 1/[\sigma^2(F_o^2) + (0.0338P)^2]$
$wR(F^2) = 0.069$	where $P = (F_o^2 + 2F_c^2)/3$
$S = 1.34$	$(\Delta/\sigma)_{\text{max}} = 0.001$
2364 reflections	$\Delta\rho_{\text{max}} = 0.37 \text{ e } \text{\AA}^{-3}$
193 parameters	$\Delta\rho_{\text{min}} = -0.22 \text{ e } \text{\AA}^{-3}$
1 restraint	Absolute structure: Flack (1983), 947 Friedel pairs
Primary atom site location: structure-invariant direct methods	Absolute structure parameter: 0.01 (5)
Secondary atom site location: difference Fourier map	

Special details

Geometry. All e.s.d.'s (except the e.s.d. in the dihedral angle between two l.s. planes) are estimated using the full covariance matrix. The cell e.s.d.'s are taken into account individually in the estimation of e.s.d.'s in distances, angles and torsion angles; correlations between e.s.d.'s in cell parameters are only used when they are defined by crystal symmetry. An approximate (isotropic) treatment of cell e.s.d.'s is used for estimating e.s.d.'s involving l.s. planes.

Refinement. Refinement of F^2 against ALL reflections. The weighted R -factor wR and goodness of fit S are based on F^2 , conventional R -factors R are based on F , with F set to zero for negative F^2 . The threshold expression of $F^2 > \sigma(F^2)$ is used only for calculating R -factors(gt) *etc.* and is not relevant to the choice of reflections for refinement. R -factors based on F^2 are statistically about twice as large as those based on F , and R -factors based on ALL data will be even larger.

Fractional atomic coordinates and isotropic or equivalent isotropic displacement parameters (\AA^2)

	x	y	z	$U_{\text{iso}}^*/U_{\text{eq}}$
C1	0.7195 (2)	0.5236 (4)	0.43062 (15)	0.0152 (5)
N2	0.7869 (2)	0.3750 (3)	0.36335 (12)	0.0139 (4)
C3	0.8554 (2)	0.5035 (4)	0.31378 (15)	0.0134 (5)
O4	0.85179 (17)	0.7255 (3)	0.32714 (10)	0.0156 (3)
C5	0.7464 (2)	0.7590 (4)	0.39563 (15)	0.0148 (5)
H5	0.7928	0.8550	0.4516	0.018*
C6	0.5893 (2)	0.8481 (4)	0.34831 (15)	0.0142 (5)
H6	0.5652	0.9825	0.3851	0.017*
O7	0.48036 (16)	0.6720 (3)	0.36046 (10)	0.0162 (4)
C8	0.5464 (2)	0.4965 (4)	0.40903 (15)	0.0142 (5)
O9	0.47385 (18)	0.3412 (3)	0.42994 (10)	0.0181 (4)
C10	0.5688 (3)	0.9041 (4)	0.24039 (15)	0.0161 (5)
H10	0.6464	1.0185	0.2316	0.019*
C11	0.4125 (3)	1.0049 (4)	0.20566 (15)	0.0165 (5)

H11A	0.3335	0.9027	0.2216	0.020*
H11B	0.4039	1.1462	0.2408	0.020*
O12	0.59596 (18)	0.7153 (3)	0.18539 (11)	0.0208 (4)
H12	0.5132	0.6520	0.1642	0.031*
O13	0.38660 (19)	1.0460 (3)	0.10212 (11)	0.0205 (4)
C14	0.4558 (3)	1.2396 (4)	0.07599 (16)	0.0192 (5)
H14A	0.4577	1.2365	0.0049	0.023*
H14B	0.5622	1.2437	0.1105	0.023*
O15	0.38097 (18)	1.4326 (3)	0.09848 (11)	0.0195 (4)
C16	0.2416 (3)	1.4735 (5)	0.03432 (17)	0.0256 (6)
H16A	0.1663	1.3625	0.0456	0.038*
H16B	0.2582	1.4641	-0.0336	0.038*
H16C	0.2045	1.6220	0.0468	0.038*
C17	0.7852 (3)	0.4676 (4)	0.53576 (15)	0.0194 (5)
H17A	0.8962	0.4793	0.5454	0.029*
H17B	0.7564	0.3159	0.5503	0.029*
H17C	0.7455	0.5714	0.5796	0.029*
C18	0.9561 (2)	0.4317 (4)	0.24145 (15)	0.0155 (5)
Cl19	0.95353 (6)	0.14171 (10)	0.22820 (4)	0.02283 (16)
Cl20	1.14459 (6)	0.51691 (10)	0.28730 (4)	0.02415 (16)
Cl21	0.89393 (7)	0.55359 (12)	0.12613 (4)	0.03251 (19)

Atomic displacement parameters (\AA^2)

	U^{11}	U^{22}	U^{33}	U^{12}	U^{13}	U^{23}
C1	0.0208 (12)	0.0143 (12)	0.0113 (10)	0.0026 (11)	0.0052 (9)	-0.0013 (10)
N2	0.0157 (10)	0.0130 (10)	0.0135 (8)	0.0008 (8)	0.0040 (8)	0.0008 (8)
C3	0.0127 (11)	0.0159 (12)	0.0107 (10)	-0.0001 (10)	-0.0005 (8)	-0.0026 (10)
O4	0.0157 (8)	0.0130 (8)	0.0195 (8)	-0.0007 (7)	0.0071 (6)	0.0001 (7)
C5	0.0158 (11)	0.0172 (13)	0.0122 (10)	0.0006 (10)	0.0050 (8)	-0.0015 (11)
C6	0.0191 (12)	0.0100 (11)	0.0147 (10)	-0.0041 (10)	0.0063 (9)	-0.0026 (10)
O7	0.0162 (8)	0.0161 (9)	0.0174 (8)	-0.0006 (7)	0.0061 (6)	0.0032 (7)
C8	0.0219 (12)	0.0125 (12)	0.0094 (10)	0.0023 (11)	0.0065 (9)	-0.0024 (10)
O9	0.0228 (9)	0.0154 (9)	0.0174 (7)	-0.0033 (7)	0.0074 (7)	0.0001 (7)
C10	0.0195 (12)	0.0159 (12)	0.0143 (10)	-0.0009 (10)	0.0064 (9)	-0.0022 (10)
C11	0.0216 (11)	0.0175 (13)	0.0109 (10)	-0.0012 (10)	0.0041 (9)	0.0026 (10)
O12	0.0208 (9)	0.0239 (9)	0.0179 (8)	0.0014 (8)	0.0035 (7)	-0.0072 (8)
O13	0.0294 (9)	0.0177 (9)	0.0135 (8)	-0.0011 (8)	0.0010 (7)	0.0023 (7)
C14	0.0231 (13)	0.0195 (12)	0.0164 (11)	0.0038 (11)	0.0071 (9)	0.0027 (11)
O15	0.0219 (9)	0.0171 (8)	0.0194 (8)	0.0012 (7)	0.0038 (7)	0.0004 (8)
C16	0.0234 (13)	0.0262 (15)	0.0257 (12)	0.0023 (11)	-0.0005 (10)	-0.0014 (12)
C17	0.0190 (12)	0.0231 (14)	0.0168 (11)	0.0052 (10)	0.0048 (9)	0.0037 (11)
C18	0.0158 (12)	0.0159 (12)	0.0151 (11)	-0.0009 (10)	0.0032 (9)	-0.0003 (10)
Cl19	0.0254 (3)	0.0168 (3)	0.0290 (3)	-0.0034 (3)	0.0126 (3)	-0.0074 (3)
Cl20	0.0162 (3)	0.0259 (3)	0.0317 (3)	-0.0044 (3)	0.0079 (2)	-0.0094 (3)
Cl21	0.0345 (4)	0.0461 (5)	0.0202 (3)	0.0192 (3)	0.0139 (3)	0.0130 (3)

Geometric parameters (Å, °)

C1—N2	1.491 (3)	C11—H11A	0.9900
C1—C17	1.515 (3)	C11—H11B	0.9900
C1—C5	1.532 (3)	O12—H12	0.8400
C1—C8	1.533 (3)	O13—C14	1.396 (3)
N2—C3	1.260 (3)	C14—O15	1.403 (3)
C3—O4	1.352 (3)	C14—H14A	0.9900
C3—C18	1.519 (3)	C14—H14B	0.9900
O4—C5	1.459 (3)	O15—C16	1.424 (3)
C5—C6	1.542 (3)	C16—H16A	0.9800
C5—H5	1.0000	C16—H16B	0.9800
C6—O7	1.468 (3)	C16—H16C	0.9800
C6—C10	1.515 (3)	C17—H17A	0.9800
C6—H6	1.0000	C17—H17B	0.9800
O7—C8	1.337 (3)	C17—H17C	0.9800
C8—O9	1.202 (3)	C18—C119	1.757 (3)
C10—O12	1.414 (3)	C18—C121	1.763 (2)
C10—C11	1.524 (3)	C18—C120	1.773 (2)
C10—H10	1.0000	C119—O4 ⁱ	3.0697 (17)
C11—O13	1.437 (2)	C120—O7 ⁱⁱ	3.1419 (16)
N2—C1—C17	109.67 (18)	O13—C11—H11A	109.3
N2—C1—C5	104.89 (16)	C10—C11—H11A	109.3
C17—C1—C5	117.1 (2)	O13—C11—H11B	109.3
N2—C1—C8	108.29 (17)	C10—C11—H11B	109.3
C17—C1—C8	112.22 (18)	H11A—C11—H11B	107.9
C5—C1—C8	104.10 (18)	C10—O12—H12	109.5
C3—N2—C1	104.83 (19)	C14—O13—C11	113.55 (17)
N2—C3—O4	120.6 (2)	O13—C14—O15	112.79 (17)
N2—C3—C18	125.5 (2)	O13—C14—H14A	109.0
O4—C3—C18	113.8 (2)	O15—C14—H14A	109.0
C3—O4—C5	105.01 (17)	O13—C14—H14B	109.0
O4—C5—C1	103.34 (17)	O15—C14—H14B	109.0
O4—C5—C6	114.30 (16)	H14A—C14—H14B	107.8
C1—C5—C6	106.11 (18)	C14—O15—C16	113.79 (18)
O4—C5—H5	110.9	O15—C16—H16A	109.5
C1—C5—H5	110.9	O15—C16—H16B	109.5
C6—C5—H5	110.9	H16A—C16—H16B	109.5
O7—C6—C10	107.59 (17)	O15—C16—H16C	109.5
O7—C6—C5	105.81 (18)	H16A—C16—H16C	109.5
C10—C6—C5	116.62 (18)	H16B—C16—H16C	109.5
O7—C6—H6	108.9	C1—C17—H17A	109.5
C10—C6—H6	108.9	C1—C17—H17B	109.5
C5—C6—H6	108.9	H17A—C17—H17B	109.5
C8—O7—C6	112.65 (16)	C1—C17—H17C	109.5
O9—C8—O7	121.9 (2)	H17A—C17—H17C	109.5
O9—C8—C1	127.1 (2)	H17B—C17—H17C	109.5

O7—C8—C1	111.04 (19)	C3—C18—C119	110.75 (17)
O12—C10—C11	112.46 (18)	C3—C18—C121	110.46 (16)
O12—C10—C6	110.51 (19)	C119—C18—C121	108.87 (12)
C11—C10—C6	110.68 (17)	C3—C18—C120	108.21 (15)
O12—C10—H10	107.7	C119—C18—C120	108.69 (13)
C11—C10—H10	107.7	C121—C18—C120	109.84 (12)
C6—C10—H10	107.7	C18—C119—O4 ⁱ	139.97 (8)
O13—C11—C10	111.67 (17)	C18—C120—O7 ⁱⁱ	177.84 (8)
C17—C1—N2—C3	-118.3 (2)	C17—C1—C8—O9	-47.7 (3)
C5—C1—N2—C3	8.3 (2)	C5—C1—C8—O9	-175.3 (2)
C8—C1—N2—C3	119.0 (2)	N2—C1—C8—O7	-105.6 (2)
C1—N2—C3—O4	-1.7 (3)	C17—C1—C8—O7	133.2 (2)
C1—N2—C3—C18	173.61 (19)	C5—C1—C8—O7	5.6 (2)
N2—C3—O4—C5	-6.0 (3)	O7—C6—C10—O12	-59.9 (2)
C18—C3—O4—C5	178.18 (16)	C5—C6—C10—O12	58.7 (3)
C3—O4—C5—C1	10.3 (2)	O7—C6—C10—C11	65.4 (2)
C3—O4—C5—C6	-104.5 (2)	C5—C6—C10—C11	-176.0 (2)
N2—C1—C5—O4	-11.3 (2)	O12—C10—C11—O13	-52.1 (3)
C17—C1—C5—O4	110.49 (19)	C6—C10—C11—O13	-176.20 (19)
C8—C1—C5—O4	-125.02 (17)	C10—C11—O13—C14	-79.6 (2)
N2—C1—C5—C6	109.24 (18)	C11—O13—C14—O15	-74.1 (2)
C17—C1—C5—C6	-128.9 (2)	O13—C14—O15—C16	-74.3 (2)
C8—C1—C5—C6	-4.4 (2)	N2—C3—C18—C119	4.6 (3)
O4—C5—C6—O7	115.31 (19)	O4—C3—C18—C119	-179.78 (15)
C1—C5—C6—O7	2.1 (2)	N2—C3—C18—C121	125.3 (2)
O4—C5—C6—C10	-4.2 (3)	O4—C3—C18—C121	-59.1 (2)
C1—C5—C6—C10	-117.4 (2)	N2—C3—C18—C120	-114.4 (2)
C10—C6—O7—C8	126.83 (19)	O4—C3—C18—C120	61.2 (2)
C5—C6—O7—C8	1.5 (2)	C3—C18—C119—O4 ⁱ	-12.9 (2)
C6—O7—C8—O9	176.28 (19)	C121—C18—C119—O4 ⁱ	-134.58 (9)
C6—O7—C8—C1	-4.6 (2)	C120—C18—C119—O4 ⁱ	105.81 (13)
N2—C1—C8—O9	73.5 (3)		

Symmetry codes: (i) $x, y-1, z$; (ii) $x+1, y, z$.

Hydrogen-bond geometry (\AA , $^\circ$)

$D-H\cdots A$	$D-H$	$H\cdots A$	$D\cdots A$	$D-H\cdots A$
O12—H12 \cdots O15 ⁱ	0.84	1.90	2.695 (2)	157
C6—H6 \cdots O9 ⁱⁱⁱ	1.00	2.43	3.402 (3)	164
C17—H17C \cdots O9 ^{iv}	0.98	2.53	3.320 (3)	137

Symmetry codes: (i) $x, y-1, z$; (iii) $x, y+1, z$; (iv) $-x+1, y+1/2, -z+1$.