

Acta Crystallographica Section E

Structure Reports

Online

ISSN 1600-5368

1-[3-(Naphthalen-1-yl)phenyl]naphthalene¹

Manorama Tummala, Raj K. Dhar, Frank R. Fronczek* and Steven F. Watkins

Department of Chemistry, Louisiana State University, Baton Rouge, LA 70803-1804, USA

Correspondence e-mail: ffroncz@lsu.edu

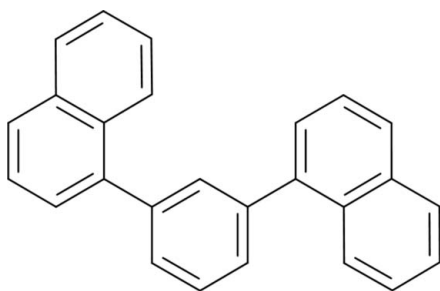
Received 17 January 2013; accepted 23 January 2013

 Key indicators: single-crystal X-ray study; $T = 100$ K, $P = 0.0$ kPa; mean $\sigma(\text{C}-\text{C}) = 0.002$ Å; R factor = 0.050; wR factor = 0.138; data-to-parameter ratio = 21.7.

The title compound, $\text{C}_{26}\text{H}_{18}$, consists of a benzene ring with *meta*-substituted 1-naphthalene substituents, which are essentially planar (r.m.s. deviation = 0.039 and 0.027 Å). The conformation is mixed *syn/anti*, with equivalent torsion angles about the benzene–naphthalene bonds of 121.46 (11) and 51.58 (14)°.

Related literature

For synthesis of the title compound, see: Woods *et al.* (1951). For similar structures, see Baker *et al.* (1990); Lin & Williams (1975); Bart (1968); Wolfenden *et al.* (2013). For *MM2* calculations, see: CambridgeSoft (2010).



Experimental

Crystal data

 $\text{C}_{26}\text{H}_{18}$
 $M_r = 330.4$

 Triclinic, $P\bar{1}$
 $a = 7.6272$ (1) Å
 $b = 10.8453$ (2) Å
 $c = 11.8454$ (2) Å
 $\alpha = 106.0798$ (8)°
 $\beta = 96.2976$ (8)°
 $\gamma = 108.4307$ (9)°

 $V = 872.05$ (2) Å³
 $Z = 2$
 Mo $K\alpha$ radiation
 $\mu = 0.07$ mm⁻¹
 $T = 100$ K
 $0.28 \times 0.22 \times 0.15$ mm

Data collection

 Nonius KappaCCD diffractometer
 Absorption correction: multi-scan
 (SCALEPACK; Otwinowski & Minor, 1997)
 $T_{\min} = 0.980$, $T_{\max} = 0.989$

 11174 measured reflections
 6272 independent reflections
 4659 reflections with $I > 2\sigma(I)$
 $R_{\text{int}} = 0.025$

Refinement

 $R[F^2 > 2\sigma(F^2)] = 0.050$
 $wR(F^2) = 0.138$
 $S = 1.05$
 6272 reflections

 289 parameters
 Only H-atom coordinates refined
 $\Delta\rho_{\max} = 0.36$ e Å⁻³
 $\Delta\rho_{\min} = -0.25$ e Å⁻³

Data collection: COLLECT (Nonius, 2000); cell refinement: SCALEPACK (Otwinowski & Minor, 1997); data reduction: DENZO (Otwinowski & Minor, 1997) and SCALEPACK; program(s) used to solve structure: SIR2002 (Burla *et al.*, 2003); program(s) used to refine structure: SHELXL97 (Sheldrick, 2008); molecular graphics: ORTEP-3 for Windows (Farrugia, 2012); software used to prepare material for publication: WinGX (Farrugia, 2012).

The purchase of the diffractometer was made possible by grant No. LEQSF(1999–2000)-ESH-TR-13, administered by the Louisiana Board of Regents.

Supplementary data and figures for this paper are available from the IUCr electronic archives (Reference: TK5189).

References

- Baker, K. N., Fratini, A. V. & Adams, W. W. (1990). *Polymer*, **31**, 1623–1631.
 Bart, J. C. J. (1968). *Acta Cryst.* **B24**, 1277–1287.
 Burla, M. C., Camalli, M., Carrozzini, B., Cascarano, G. L., Giacovazzo, C., Polidori, G. & Spagna, R. (2003). *J. Appl. Cryst.* **36**, 1103.
 CambridgeSoft (2010). *Chem3DPro*. CambridgeSoft Corporation, Cambridge, MA, USA.
 Farrugia, L. J. (2012). *J. Appl. Cryst.* **45**, 849–854.
 Lin, Y. C. & Williams, D. E. (1975). *Acta Cryst.* **B31**, 318–320.
 Nonius (2000). COLLECT. Nonius BV, Delft, The Netherlands.
 Otwinowski, Z. & Minor, W. (1997). *Methods in Enzymology*, Vol. 276, *Macromolecular Crystallography*, Part A, edited by C. W. Carter Jr & R. M. Sweet, pp. 307–326. New York: Academic Press.
 Sheldrick, G. M. (2008). *Acta Cryst.* **A64**, 112–122.
 Wolfenden, M. L., Dhar, R. K., Fronczek, F. R. & Watkins, S. F. (2013). *Acta Cryst.* **E69**, o308.
 Woods, G. F., Reed, F. T., Arthur, T. E. & Ezekiel, H. (1951). *J. Am. Chem. Soc.* **73**, 3854–3856.

¹ CAS 103068–16–2.

supporting information

Acta Cryst. (2013). E69, o307 [doi:10.1107/S1600536813002407]

1-[3-(Naphthalen-1-yl)phenyl]naphthalene

Manorama Tummala, Raj K. Dhar, Frank R. Fronczek and Steven F. Watkins

S1. Comment

Although the structures of *p*-oligophenyls have been well investigated (Baker *et al.*, 1990, and references therein), there have been few reports of the conformational preferences of *m*-oligophenyls. Lin & Williams (1975) have reported the crystal structure of 1,3,5 triphenyl benzene, which serves as a model for *m*-polyphenyls. That structure has phenyl groups which are twisted about the benzene-benzene single bonds by torsion angles of +40.7, -37.2, and +36.1°. The crystal structure of one of the polymorphic forms of hexaphenyl benzene, reported by Bart (1968), also shows that the peripheral rings are twisted out of the central ring by about 25°. That molecule also exhibited out-of-plane distortion by bending of the exocyclic bonds. We have studied the structure of 1,3-bis(1-naphthyl)benzene for comparison of its conformation to the previous results.

Title compound **I** consists of a benzene ring with *meta*-substituted 1-naphthalenes. The benzene ring is planar ($\delta_{\text{r.m.s.}} = 0.007 \text{ \AA}$), as are the two naphthalenes ($\delta_{\text{r.m.s.}} = 0.039$ and 0.027 \AA). *MM2* calculations of isolated models (CambridgeSoft, 2010) reveal six conformers of **I** with approximately equal energies. They differ by positive or negative torsions C2—C1—C7—C8 (A1) and C2—C3—C17—C18 (A2) from the three paradigmatic conformers *syn* (C_{2v} , A1, A2 = 0, 0°), *anti* (C_{2v} , 180, 180°), and mixed (C_s , 180, 0°). The conformation of **I** is mixed (C_1), with A1 = 121.46 (11)° and A2 = 51.58 (14)° (*MM2* yields angles of 149 and 35° for the global minimum energy conformation).

S2. Experimental

The crystal was prepared by refluxing di-(α -naphthyl)-cyclohexadiene with a Pd-charcoal mixture in *p*-cymene for 4–5 h. After filtration, the filtrate was steam distilled. The residue was extracted with ether and recrystallized from petroleum ether (Woods *et al.*, 1951).

S3. Refinement

All H atom positions were refined, but $U_{\text{iso}}(\text{H})$ was set to $1.2U_{\text{eq}}$ of the attached C atom. C–H distances fall within the range 0.973 (14) - 1.031 (15) Å.

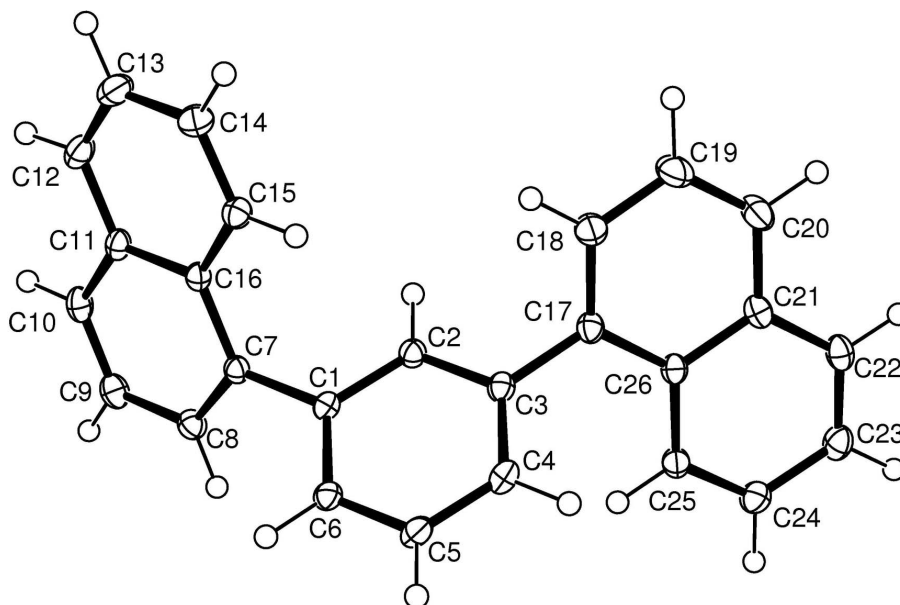


Figure 1
View of (I) (50% probability displacement ellipsoids)

1-[3-(Naphthalen-1-yl)phenyl]naphthalene

Crystal data

$C_{26}H_{18}$

$M_r = 330.4$

Triclinic, $P\bar{1}$

Hall symbol: $-P\ 1$

$a = 7.6272$ (1) Å

$b = 10.8453$ (2) Å

$c = 11.8454$ (2) Å

$\alpha = 106.0798$ (8)°

$\beta = 96.2976$ (8)°

$\gamma = 108.4307$ (9)°

$V = 872.05$ (2) Å³

$Z = 2$

$F(000) = 348$

$D_x = 1.258$ Mg m⁻³

Melting point: 131.5(5) K

Mo $K\alpha$ radiation, $\lambda = 0.71073$ Å

Cell parameters from 5528 reflections

$\theta = 2.6$ – 32.6 °

$\mu = 0.07$ mm⁻¹

$T = 100$ K

Prism, colourless

$0.28 \times 0.22 \times 0.15$ mm

Data collection

Nonius KappaCCD

diffractometer

Radiation source: fine-focus sealed tube

Graphite monochromator

Detector resolution: 9 pixels mm⁻¹

φ and ω scans

Absorption correction: multi-scan

(SCALEPACK; Otwinowski & Minor, 1997)

$T_{\min} = 0.980$, $T_{\max} = 0.989$

11174 measured reflections

6272 independent reflections

4659 reflections with $I > 2\sigma(I)$

$R_{\text{int}} = 0.025$

$\theta_{\max} = 32.6$ °, $\theta_{\min} = 2.9$ °

$h = -11 \rightarrow 11$

$k = -16 \rightarrow 16$

$l = -17 \rightarrow 17$

Refinement

Refinement on F^2

Least-squares matrix: full

$R[F^2 > 2\sigma(F^2)] = 0.050$

$wR(F^2) = 0.138$

$S = 1.05$

6272 reflections

289 parameters

0 restraints

0 constraints
 Primary atom site location: structure-invariant
 direct methods
 Secondary atom site location: difference Fourier
 map
 Hydrogen site location: inferred from
 neighbouring sites

Only H-atom coordinates refined
 $w = 1/[\sigma^2(F_o^2) + (0.0681P)^2 + 0.1782P]$
 where $P = (F_o^2 + 2F_c^2)/3$
 $(\Delta/\sigma)_{\max} = 0.001$
 $\Delta\rho_{\max} = 0.36 \text{ e } \text{\AA}^{-3}$
 $\Delta\rho_{\min} = -0.25 \text{ e } \text{\AA}^{-3}$

Special details

Geometry. All e.s.d.'s (except the e.s.d. in the dihedral angle between two l.s. planes) are estimated using the full covariance matrix. The cell e.s.d.'s are taken into account individually in the estimation of e.s.d.'s in distances, angles and torsion angles; correlations between e.s.d.'s in cell parameters are only used when they are defined by crystal symmetry. An approximate (isotropic) treatment of cell e.s.d.'s is used for estimating e.s.d.'s involving l.s. planes.

Fractional atomic coordinates and isotropic or equivalent isotropic displacement parameters (\AA^2)

| | <i>x</i> | <i>y</i> | <i>z</i> | $U_{\text{iso}}^*/U_{\text{eq}}$ |
|-----|--------------|--------------|--------------|----------------------------------|
| C1 | 0.82582 (14) | 0.47008 (10) | 0.81621 (9) | 0.01484 (18) |
| C2 | 0.69555 (14) | 0.50351 (10) | 0.74916 (9) | 0.01559 (18) |
| H2 | 0.5744 (18) | 0.4321 (13) | 0.7006 (12) | 0.019* |
| C3 | 0.73683 (14) | 0.63687 (10) | 0.74479 (9) | 0.01583 (18) |
| C4 | 0.91076 (15) | 0.73893 (10) | 0.81138 (9) | 0.0186 (2) |
| H4 | 0.9414 (19) | 0.8349 (14) | 0.8107 (13) | 0.022* |
| C5 | 1.04081 (15) | 0.70701 (11) | 0.87862 (9) | 0.0192 (2) |
| H5 | 1.159 (2) | 0.7783 (14) | 0.9277 (13) | 0.023* |
| C6 | 0.99993 (14) | 0.57264 (10) | 0.87979 (9) | 0.01680 (19) |
| H6 | 1.0961 (19) | 0.5510 (13) | 0.9275 (12) | 0.02* |
| C7 | 0.78015 (13) | 0.32634 (10) | 0.81691 (9) | 0.01449 (18) |
| C8 | 0.89726 (15) | 0.25621 (11) | 0.77886 (10) | 0.01835 (19) |
| H8 | 1.013 (2) | 0.3032 (14) | 0.7538 (13) | 0.022* |
| C9 | 0.85267 (16) | 0.11697 (11) | 0.77163 (10) | 0.0213 (2) |
| H9 | 0.939 (2) | 0.0692 (15) | 0.7408 (14) | 0.026* |
| C10 | 0.69203 (16) | 0.04918 (10) | 0.80376 (10) | 0.0200 (2) |
| H10 | 0.658 (2) | -0.0494 (14) | 0.7972 (13) | 0.024* |
| C11 | 0.57133 (14) | 0.11841 (10) | 0.84745 (9) | 0.01646 (19) |
| C12 | 0.40719 (16) | 0.05083 (11) | 0.88491 (10) | 0.0216 (2) |
| H12 | 0.380 (2) | -0.0479 (15) | 0.8764 (13) | 0.026* |
| C13 | 0.29543 (16) | 0.11944 (12) | 0.93179 (11) | 0.0241 (2) |
| H13 | 0.183 (2) | 0.0731 (15) | 0.9603 (13) | 0.029* |
| C14 | 0.34088 (16) | 0.25987 (11) | 0.94264 (10) | 0.0217 (2) |
| H14 | 0.261 (2) | 0.3096 (14) | 0.9777 (13) | 0.026* |
| C15 | 0.49569 (14) | 0.32721 (10) | 0.90471 (9) | 0.01736 (19) |
| H15 | 0.5279 (19) | 0.4277 (14) | 0.9140 (13) | 0.021* |
| C16 | 0.61575 (14) | 0.25913 (9) | 0.85565 (9) | 0.01443 (18) |
| C17 | 0.59275 (14) | 0.66850 (10) | 0.67417 (9) | 0.01692 (19) |
| C18 | 0.41114 (16) | 0.63294 (12) | 0.69381 (11) | 0.0235 (2) |
| H18 | 0.378 (2) | 0.5841 (15) | 0.7523 (14) | 0.028* |
| C19 | 0.27133 (17) | 0.66524 (14) | 0.63265 (12) | 0.0287 (3) |
| H19 | 0.139 (2) | 0.6350 (16) | 0.6469 (14) | 0.034* |

| | | | | |
|-----|--------------|--------------|--------------|--------------|
| C20 | 0.31553 (16) | 0.73679 (13) | 0.55434 (11) | 0.0247 (2) |
| H20 | 0.216 (2) | 0.7599 (15) | 0.5088 (14) | 0.03* |
| C21 | 0.49962 (15) | 0.77453 (10) | 0.53030 (9) | 0.01804 (19) |
| C22 | 0.54657 (16) | 0.84667 (11) | 0.44775 (9) | 0.0201 (2) |
| H22 | 0.4519 (19) | 0.8779 (14) | 0.4119 (13) | 0.024* |
| C23 | 0.71984 (16) | 0.87506 (11) | 0.41886 (10) | 0.0220 (2) |
| H23 | 0.751 (2) | 0.9230 (14) | 0.3557 (14) | 0.026* |
| C24 | 0.85601 (16) | 0.83222 (11) | 0.47117 (10) | 0.0215 (2) |
| H24 | 0.983 (2) | 0.8506 (15) | 0.4477 (13) | 0.026* |
| C25 | 0.81667 (15) | 0.76545 (11) | 0.55395 (10) | 0.01813 (19) |
| H25 | 0.9135 (19) | 0.7354 (14) | 0.5896 (13) | 0.022* |
| C26 | 0.63915 (14) | 0.73646 (10) | 0.58754 (9) | 0.01580 (18) |

Atomic displacement parameters (Å²)

| | U^{11} | U^{22} | U^{33} | U^{12} | U^{13} | U^{23} |
|-----|------------|------------|------------|------------|------------|------------|
| C1 | 0.0164 (4) | 0.0144 (4) | 0.0145 (4) | 0.0052 (3) | 0.0046 (3) | 0.0059 (3) |
| C2 | 0.0164 (4) | 0.0139 (4) | 0.0158 (4) | 0.0050 (3) | 0.0026 (3) | 0.0049 (3) |
| C3 | 0.0181 (4) | 0.0162 (4) | 0.0149 (4) | 0.0068 (3) | 0.0050 (3) | 0.0065 (3) |
| C4 | 0.0229 (5) | 0.0152 (4) | 0.0176 (5) | 0.0046 (4) | 0.0059 (4) | 0.0072 (4) |
| C5 | 0.0195 (5) | 0.0178 (4) | 0.0166 (5) | 0.0007 (4) | 0.0028 (4) | 0.0074 (4) |
| C6 | 0.0160 (4) | 0.0188 (4) | 0.0152 (4) | 0.0041 (3) | 0.0030 (3) | 0.0079 (3) |
| C7 | 0.0153 (4) | 0.0141 (4) | 0.0137 (4) | 0.0051 (3) | 0.0016 (3) | 0.0048 (3) |
| C8 | 0.0185 (5) | 0.0197 (4) | 0.0188 (5) | 0.0089 (4) | 0.0047 (4) | 0.0068 (4) |
| C9 | 0.0251 (5) | 0.0205 (5) | 0.0217 (5) | 0.0134 (4) | 0.0046 (4) | 0.0062 (4) |
| C10 | 0.0262 (5) | 0.0152 (4) | 0.0192 (5) | 0.0098 (4) | 0.0019 (4) | 0.0054 (4) |
| C11 | 0.0197 (5) | 0.0131 (4) | 0.0150 (4) | 0.0044 (3) | 0.0010 (3) | 0.0050 (3) |
| C12 | 0.0237 (5) | 0.0169 (4) | 0.0217 (5) | 0.0023 (4) | 0.0036 (4) | 0.0089 (4) |
| C13 | 0.0213 (5) | 0.0239 (5) | 0.0247 (5) | 0.0024 (4) | 0.0066 (4) | 0.0106 (4) |
| C14 | 0.0205 (5) | 0.0236 (5) | 0.0218 (5) | 0.0078 (4) | 0.0076 (4) | 0.0078 (4) |
| C15 | 0.0189 (5) | 0.0163 (4) | 0.0175 (5) | 0.0067 (4) | 0.0047 (4) | 0.0059 (4) |
| C16 | 0.0158 (4) | 0.0134 (4) | 0.0134 (4) | 0.0049 (3) | 0.0014 (3) | 0.0046 (3) |
| C17 | 0.0193 (4) | 0.0163 (4) | 0.0178 (5) | 0.0086 (4) | 0.0052 (4) | 0.0066 (4) |
| C18 | 0.0218 (5) | 0.0307 (5) | 0.0265 (6) | 0.0132 (4) | 0.0112 (4) | 0.0159 (5) |
| C19 | 0.0212 (5) | 0.0429 (7) | 0.0334 (6) | 0.0174 (5) | 0.0124 (5) | 0.0205 (5) |
| C20 | 0.0235 (5) | 0.0332 (6) | 0.0253 (6) | 0.0175 (5) | 0.0068 (4) | 0.0127 (5) |
| C21 | 0.0207 (5) | 0.0182 (4) | 0.0162 (4) | 0.0100 (4) | 0.0023 (4) | 0.0044 (4) |
| C22 | 0.0250 (5) | 0.0188 (4) | 0.0165 (5) | 0.0099 (4) | 0.0000 (4) | 0.0049 (4) |
| C23 | 0.0264 (5) | 0.0209 (5) | 0.0176 (5) | 0.0062 (4) | 0.0018 (4) | 0.0087 (4) |
| C24 | 0.0219 (5) | 0.0233 (5) | 0.0208 (5) | 0.0072 (4) | 0.0060 (4) | 0.0103 (4) |
| C25 | 0.0190 (5) | 0.0191 (4) | 0.0193 (5) | 0.0086 (4) | 0.0052 (4) | 0.0087 (4) |
| C26 | 0.0183 (4) | 0.0143 (4) | 0.0158 (4) | 0.0073 (3) | 0.0037 (3) | 0.0048 (3) |

Geometric parameters (Å, °)

| | | | |
|-------|-------------|---------|-------------|
| C1—C6 | 1.3966 (14) | C13—C14 | 1.4157 (16) |
| C1—C2 | 1.4013 (13) | C13—H13 | 0.992 (15) |
| C1—C7 | 1.4886 (13) | C14—C15 | 1.3720 (15) |

| | | | |
|-----------|-------------|-------------|-------------|
| C2—C3 | 1.3966 (13) | C14—H14 | 0.988 (15) |
| C2—H2 | 0.984 (13) | C15—C16 | 1.4241 (14) |
| C3—C4 | 1.4019 (14) | C15—H15 | 1.010 (13) |
| C3—C17 | 1.4902 (14) | C17—C18 | 1.3799 (15) |
| C4—C5 | 1.3909 (15) | C17—C26 | 1.4337 (14) |
| C4—H4 | 0.995 (13) | C18—C19 | 1.4113 (16) |
| C5—C6 | 1.3949 (14) | C18—H18 | 0.990 (15) |
| C5—H5 | 0.973 (14) | C19—C20 | 1.3704 (17) |
| C6—H6 | 1.001 (13) | C19—H19 | 1.007 (16) |
| C7—C8 | 1.3811 (14) | C20—C21 | 1.4174 (16) |
| C7—C16 | 1.4309 (14) | C20—H20 | 1.016 (15) |
| C8—C9 | 1.4144 (15) | C21—C22 | 1.4212 (15) |
| C8—H8 | 0.991 (14) | C21—C26 | 1.4272 (13) |
| C9—C10 | 1.3690 (16) | C22—C23 | 1.3634 (16) |
| C9—H9 | 0.999 (15) | C22—H22 | 0.992 (14) |
| C10—C11 | 1.4161 (15) | C23—C24 | 1.4149 (15) |
| C10—H10 | 0.996 (14) | C23—H23 | 1.031 (15) |
| C11—C12 | 1.4223 (15) | C24—C25 | 1.3771 (14) |
| C11—C16 | 1.4273 (13) | C24—H24 | 1.010 (15) |
| C12—C13 | 1.3656 (17) | C25—C26 | 1.4173 (14) |
| C12—H12 | 0.998 (14) | C25—H25 | 0.995 (14) |
| | | | |
| C6—C1—C2 | 119.05 (9) | C15—C14—C13 | 120.27 (10) |
| C6—C1—C7 | 120.75 (9) | C15—C14—H14 | 119.9 (8) |
| C2—C1—C7 | 120.18 (8) | C13—C14—H14 | 119.8 (8) |
| C3—C2—C1 | 121.27 (9) | C14—C15—C16 | 121.25 (9) |
| C3—C2—H2 | 118.1 (7) | C14—C15—H15 | 119.6 (8) |
| C1—C2—H2 | 120.5 (7) | C16—C15—H15 | 119.1 (8) |
| C2—C3—C4 | 118.73 (9) | C15—C16—C11 | 118.13 (9) |
| C2—C3—C17 | 119.48 (9) | C15—C16—C7 | 122.94 (9) |
| C4—C3—C17 | 121.74 (9) | C11—C16—C7 | 118.92 (9) |
| C5—C4—C3 | 120.47 (9) | C18—C17—C26 | 119.33 (9) |
| C5—C4—H4 | 119.7 (8) | C18—C17—C3 | 119.14 (9) |
| C3—C4—H4 | 119.8 (8) | C26—C17—C3 | 121.53 (9) |
| C4—C5—C6 | 120.26 (9) | C17—C18—C19 | 121.38 (10) |
| C4—C5—H5 | 120.7 (8) | C17—C18—H18 | 119.4 (8) |
| C6—C5—H5 | 119.0 (8) | C19—C18—H18 | 119.3 (9) |
| C5—C6—C1 | 120.18 (9) | C20—C19—C18 | 120.19 (11) |
| C5—C6—H6 | 119.3 (8) | C20—C19—H19 | 120.4 (9) |
| C1—C6—H6 | 120.5 (7) | C18—C19—H19 | 119.4 (9) |
| C8—C7—C16 | 119.38 (9) | C19—C20—C21 | 120.53 (10) |
| C8—C7—C1 | 119.62 (9) | C19—C20—H20 | 121.2 (9) |
| C16—C7—C1 | 121.00 (8) | C21—C20—H20 | 118.2 (9) |
| C7—C8—C9 | 121.24 (10) | C20—C21—C22 | 121.15 (9) |
| C7—C8—H8 | 119.6 (8) | C20—C21—C26 | 119.53 (9) |
| C9—C8—H8 | 119.1 (8) | C22—C21—C26 | 119.29 (9) |
| C10—C9—C8 | 120.22 (10) | C23—C22—C21 | 121.06 (9) |
| C10—C9—H9 | 121.2 (8) | C23—C22—H22 | 119.8 (8) |

| | | | |
|-----------------|--------------|-----------------|--------------|
| C8—C9—H9 | 118.6 (8) | C21—C22—H22 | 119.1 (8) |
| C9—C10—C11 | 120.51 (9) | C22—C23—C24 | 119.94 (10) |
| C9—C10—H10 | 120.8 (8) | C22—C23—H23 | 120.9 (8) |
| C11—C10—H10 | 118.7 (8) | C24—C23—H23 | 119.1 (8) |
| C10—C11—C12 | 121.23 (9) | C25—C24—C23 | 120.38 (10) |
| C10—C11—C16 | 119.64 (9) | C25—C24—H24 | 119.7 (8) |
| C12—C11—C16 | 119.13 (9) | C23—C24—H24 | 119.9 (8) |
| C13—C12—C11 | 121.13 (10) | C24—C25—C26 | 121.10 (9) |
| C13—C12—H12 | 122.3 (8) | C24—C25—H25 | 119.5 (8) |
| C11—C12—H12 | 116.6 (8) | C26—C25—H25 | 119.4 (8) |
| C12—C13—C14 | 120.05 (10) | C25—C26—C21 | 118.13 (9) |
| C12—C13—H13 | 121.2 (9) | C25—C26—C17 | 123.00 (9) |
| C14—C13—H13 | 118.8 (8) | C21—C26—C17 | 118.85 (9) |
| | | | |
| C6—C1—C2—C3 | 0.09 (15) | C12—C11—C16—C7 | -179.48 (9) |
| C7—C1—C2—C3 | -178.50 (9) | C8—C7—C16—C15 | 175.10 (9) |
| C1—C2—C3—C4 | -1.45 (15) | C1—C7—C16—C15 | -5.35 (15) |
| C1—C2—C3—C17 | -178.88 (9) | C8—C7—C16—C11 | -3.52 (14) |
| C2—C3—C4—C5 | 1.18 (15) | C1—C7—C16—C11 | 176.03 (9) |
| C17—C3—C4—C5 | 178.55 (10) | C2—C3—C17—C18 | 51.58 (14) |
| C3—C4—C5—C6 | 0.46 (16) | C4—C3—C17—C18 | -125.77 (12) |
| C4—C5—C6—C1 | -1.86 (16) | C2—C3—C17—C26 | -129.21 (11) |
| C2—C1—C6—C5 | 1.58 (15) | C4—C3—C17—C26 | 53.44 (14) |
| C7—C1—C6—C5 | -179.85 (10) | C26—C17—C18—C19 | -1.65 (17) |
| C6—C1—C7—C8 | -57.09 (13) | C3—C17—C18—C19 | 177.57 (11) |
| C2—C1—C7—C8 | 121.46 (11) | C17—C18—C19—C20 | -1.89 (19) |
| C6—C1—C7—C16 | 123.36 (11) | C18—C19—C20—C21 | 2.44 (19) |
| C2—C1—C7—C16 | -58.08 (13) | C19—C20—C21—C22 | 178.91 (11) |
| C16—C7—C8—C9 | 3.27 (15) | C19—C20—C21—C26 | 0.53 (17) |
| C1—C7—C8—C9 | -176.28 (9) | C20—C21—C22—C23 | -175.72 (10) |
| C7—C8—C9—C10 | -0.69 (16) | C26—C21—C22—C23 | 2.66 (15) |
| C8—C9—C10—C11 | -1.62 (16) | C21—C22—C23—C24 | 0.14 (16) |
| C9—C10—C11—C12 | -177.93 (10) | C22—C23—C24—C25 | -1.92 (17) |
| C9—C10—C11—C16 | 1.29 (15) | C23—C24—C25—C26 | 0.83 (17) |
| C10—C11—C12—C13 | 177.18 (10) | C24—C25—C26—C21 | 1.96 (15) |
| C16—C11—C12—C13 | -2.04 (16) | C24—C25—C26—C17 | -179.34 (10) |
| C11—C12—C13—C14 | 0.68 (17) | C20—C21—C26—C25 | 174.76 (10) |
| C12—C13—C14—C15 | 0.87 (17) | C22—C21—C26—C25 | -3.65 (14) |
| C13—C14—C15—C16 | -1.04 (16) | C20—C21—C26—C17 | -4.00 (14) |
| C14—C15—C16—C11 | -0.33 (15) | C22—C21—C26—C17 | 177.59 (9) |
| C14—C15—C16—C7 | -178.95 (10) | C18—C17—C26—C25 | -174.15 (10) |
| C10—C11—C16—C15 | -177.40 (9) | C3—C17—C26—C25 | 6.64 (15) |
| C12—C11—C16—C15 | 1.83 (14) | C18—C17—C26—C21 | 4.54 (15) |
| C10—C11—C16—C7 | 1.28 (14) | C3—C17—C26—C21 | -174.67 (9) |