

Acta Crystallographica Section E

Structure Reports

Online

ISSN 1600-5368

Methyl 3',4',5'-trimethoxybiphenyl-4-carboxylate

 Manu Lahtinen,^a Kalle Näntinen^b and Sami Nummelin^{c*}
^aUniversity of Jyväskylä, Department of Chemistry, PO Box 35, FI-40014 JY, Finland,

^bVTT Technical Research Centre of Finland, Tampere, FIN-33101, Finland, and

^cMolecular Materials, Department of Applied Physics, School of Science, Aalto University, PO Box 15100, FI-00076 Aalto, Finland

Correspondence e-mail: sami.nummelin@aalto.fi

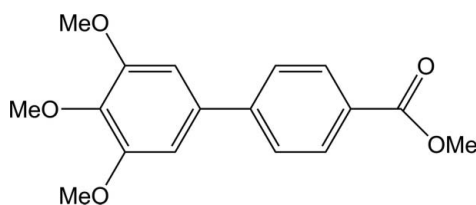
Received 22 January 2013; accepted 11 February 2013

 Key indicators: single-crystal X-ray study; $T = 123$ K; mean $\sigma(\text{C}-\text{C}) = 0.002$ Å; R factor = 0.034; wR factor = 0.096; data-to-parameter ratio = 13.4.

In the title compound, $\text{C}_{17}\text{H}_{18}\text{O}_5$, the dihedral angle between the benzene rings is $31.23(16)^\circ$. In the crystal, the molecules are packed in an antiparallel fashion in layers along the a axis. In each layer, very weak $\text{C}-\text{H}\cdots\text{O}$ hydrogen bonds occur between the methoxy and methyl ester groups. Weak $\text{C}-\text{H}\cdots\pi$ interactions between the 4'- and 5'-methoxy groups and neighbouring benzene rings [methoxy-C-ring centroid distances = 4.075 and 3.486 Å, respectively] connect the layers.

Related literature

For a related structure, see: Li *et al.* (2012). For the nature of hydrogen bonding, see Steiner (2002); For related biphenyl structures, see: Leowanawat *et al.* (2011); Wilson *et al.* (2008); Percec *et al.* (2004); Suzuki (1999). For details of the synthesis and amphiphilic supramolecular biphenyl dendrimers, see: Percec *et al.* (2006, 2007). For general background to self-assembling dendrons and dendrimers, see: Rosen *et al.* (2009); For the use of aromatic and aliphatic ester derivatives in the synthesis of dendrimers and dendrons, see Nummelin *et al.* (2000); Twibanire & Grindley (2012).



Experimental

Crystal data

 $\text{C}_{17}\text{H}_{18}\text{O}_5$
 $M_r = 302.31$
 Triclinic, $P\bar{1}$
 $a = 7.9103(5)$ Å
 $b = 8.6054(7)$ Å

 $c = 11.8779(7)$ Å
 $\alpha = 92.834(6)^\circ$
 $\beta = 92.448(5)^\circ$
 $\gamma = 115.822(7)^\circ$
 $V = 725.07(9)$ Å³
 $Z = 2$
 Cu $K\alpha$ radiation
 $\mu = 0.84$ mm⁻¹
 $T = 123$ K
 $0.49 \times 0.23 \times 0.10$ mm

Data collection

 Agilent SuperNova (Dual source with Cu, Atlas) diffractometer
 Absorption correction: analytical (*CrysAlis PRO*; Agilent, 2010)
 $T_{\min} = 0.827$, $T_{\max} = 0.951$

 4547 measured reflections
 2731 independent reflections
 2524 reflections with $I > 2\sigma(I)$
 $R_{\text{int}} = 0.016$

Refinement

 $R[F^2 > 2\sigma(F^2)] = 0.034$
 $wR(F^2) = 0.096$
 $S = 1.05$
 2731 reflections

 204 parameters
 H-atom parameters constrained
 $\Delta\rho_{\max} = 0.26$ e Å⁻³
 $\Delta\rho_{\min} = -0.25$ e Å⁻³

Table 1

Hydrogen-bond geometry (Å, °).

| $D-\text{H}\cdots A$ | $D-\text{H}$ | $\text{H}\cdots A$ | $D\cdots A$ | $D-\text{H}\cdots A$ |
|--|--------------|--------------------|-------------|----------------------|
| $\text{C15}-\text{H15A}\cdots\text{O2}^{\text{i}}$ | 0.98 | 2.58 | 3.4933 (15) | 156 |
| $\text{C18}-\text{H18C}\cdots\text{O14}^{\text{ii}}$ | 0.98 | 2.50 | 3.4453 (16) | 161 |

 Symmetry codes: (i) $-x + 2, -y + 1, -z$; (ii) $-x, -y, -z$.

Data collection: *CrysAlis PRO* (Agilent, 2010); cell refinement: *CrysAlis PRO*; data reduction: *CrysAlis PRO*; program(s) used to solve structure: *SUPERFLIP* (Palatinus & Chapuis, 2007); program(s) used to refine structure: *SHELXL97* (Sheldrick, 2008); molecular graphics: *OLEX2* (Dolomanov *et al.*, 2009) and *Mercury* (Macrae *et al.*, 2006); software used to prepare material for publication: *OLEX2*.

SN acknowledges the Academy of Finland for financial support (No. 138850).

Supplementary data and figures for this paper are available from the IUCr electronic archives (Reference: FJ2614).

References

- Agilent (2010). *CrysAlis PRO*. Agilent Technologies Ltd, Yarnton, England.
 Dolomanov, O. V., Bourhis, L. J., Gildea, R. J., Howard, J. A. K. & Puschmann, H. (2009). *J. Appl. Cryst.* **42**, 339–341.
 Leowanawat, P., Zhang, N., Resmerita, A.-M., Rosen, B. M. & Percec, V. (2011). *J. Org. Chem.* **76**, 9946–9955.
 Li, X.-M., Hou, Y.-J., Chu, W.-Y. & Sun, Z.-Z. (2012). *Acta Cryst. E* **68**, o1292.
 Macrae, C. F., Edgington, P. R., McCabe, P., Pidcock, E., Shields, G. P., Taylor, R., Towler, M. & van de Streek, J. (2006). *J. Appl. Cryst.* **39**, 453–457.
 Nummelin, S., Skrifvars, M. & Rissanen, K. (2000). *Top. Curr. Chem.* **210**, 1–67.
 Palatinus, L. & Chapuis, G. (2007). *J. Appl. Cryst.* **40**, 786–790.
 Percec, V., Golding, G. M., Smidrcal, J. & Weichold, O. (2004). *J. Org. Chem.* **69**, 3447–3452.
 Percec, V., Holerca, M. N., Nummelin, S., Morrison, J. J., Glodde, M., Smidrcal, J., Peterca, M., Uchida, S., Balagurusamy, V. S. K., Sienkowska, M. J. & Heiney, P. A. (2006). *Chem. Eur. J.* **12**, 6216–6241.
 Percec, V., Smidrcal, J., Peterca, M., Mitchell, C. M., Nummelin, S., Dulcey, A. E., Sienkowska, M. J. & Heiney, P. A. (2007). *Chem. Eur. J.* **13**, 3989–4007.
 Rosen, B. M., Wilson, C. J., Wilson, D. A., Peterca, M., Imam, M. R. & Percec, V. (2009). *Chem. Rev.* **109**, 6275–6540.
 Sheldrick, G. M. (2008). *Acta Cryst. A* **64**, 112–122.
 Steiner, T. (2002). *Angew. Chem. Int. Ed.* **41**, 48–76.
 Suzuki, A. (1999). *Organomet. Chem.* **576**, 147–168.
 Twibanire, J. K. & Grindley, T. B. (2012). *Polymers*, **4**, 794–879.
 Wilson, D. A., Wilson, C. J., Rosen, B. M. & Percec, V. (2008). *Org. Lett.* **10**, 4879–4882.

supporting information

Acta Cryst. (2013). E69, o383 [doi:10.1107/S1600536813004133]

Methyl 3',4',5'-trimethoxybiphenyl-4-carboxylate

Manu Lahtinen, Kalle Nättinen and Sami Nummelin

S1. Comment

Aromatic and aliphatic ester derivatives are extensively used for the synthesis of various types of dendrimers and dendrons (Nummelin *et al.* 2000, Twibanire *et al.* 2012). In addition to arylmethyl ether-ester compounds, corresponding biphenyls are employed as building blocks for the construction of amphiphilic dendrons (Percec *et al.* 2006, 2007). These dendrons self-assemble into hollow and non-hollow supramolecular dendrimers that further self-organize into periodic assemblies (Rosen *et al.* 2009). The key step in the multi-step reaction sequence is a metal catalyzed aryl-aryl cross-coupling (Percec *et al.* 2004, 2006; Suzuki 1999). As a contribution to a structural study of biphenyl ether derivatives we report here the title compound methyl-(3',4',5'-trimethoxybiphenyl)-4-carboxylate (I).

Compound (I) crystallizes in triclinic space group *P*-1 (No. 2) without any solvent molecule in an asymmetric unit (Fig. 1). The intramolecular dihedral angle between the phenyl moieties is 31.23 (16)° [C7–C8–C11–C12]. The molecules are packed in antiparallel rows along *a*-axis (Fig. 2). On each layer of molecules, very weak C–H···O hydrogen bonds (Steiner 2002) are found between the methoxy and methyl ester groups d(H···A) varying from 2.5 to 2.6 Å (Fig. 3). The 4'-methoxy groups are pointing out from the otherwise planar molecules with bond and torsion angles of 121.07 (10)° and -72.99 (13)° [C13–C16–O17; C13–C16–O17–C18], respectively. In consequence of the projecting methoxy group and the 5'-methoxy group, the molecule layers are interconnected (Fig. 4.) *via* C–H··· π interactions occurring between methoxy group H atoms and close by phenyl rings with distances of 4.075 and 3.846 Å [from methoxy(C) to phenyl ring centroid].

S2. Experimental

3',4',5'-trimethoxy-biphenyl-4-carboxylic acid (21.0 g, 72.8 mmol) was dissolved in MeOH (300 ml) and conc. sulfuric acid (3 ml). The solution was stirred under reflux for 14 h and then allowed to cool down to ambient temperature. The precipitate was collected by filtration, washed with water and dried in *vacuo* affording the title ester (20.4 g, 93%) as a white crystalline solid. Crystals suitable for a single-crystal structure determination were obtained from a slow evaporation of ethanol solution.

S3. Refinement

Hydrogen atoms were calculated to their positions as riding atoms (C host) using isotropic displacement parameters that were fixed to be 1.2 or 1.5 times larger than those of the attached non-hydrogen atom.

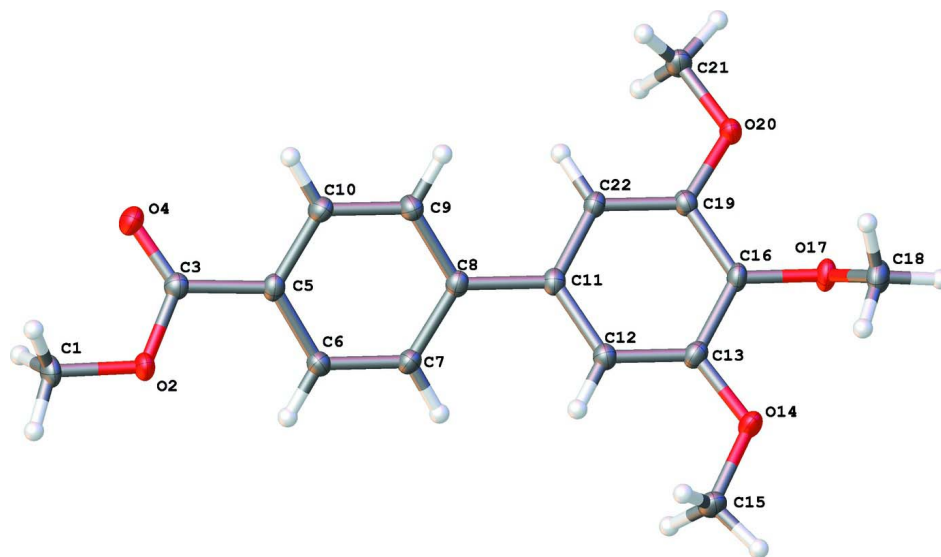


Figure 1

The asymmetric unit of (I) showing labeling scheme and displacement ellipsoids with 50% probability.

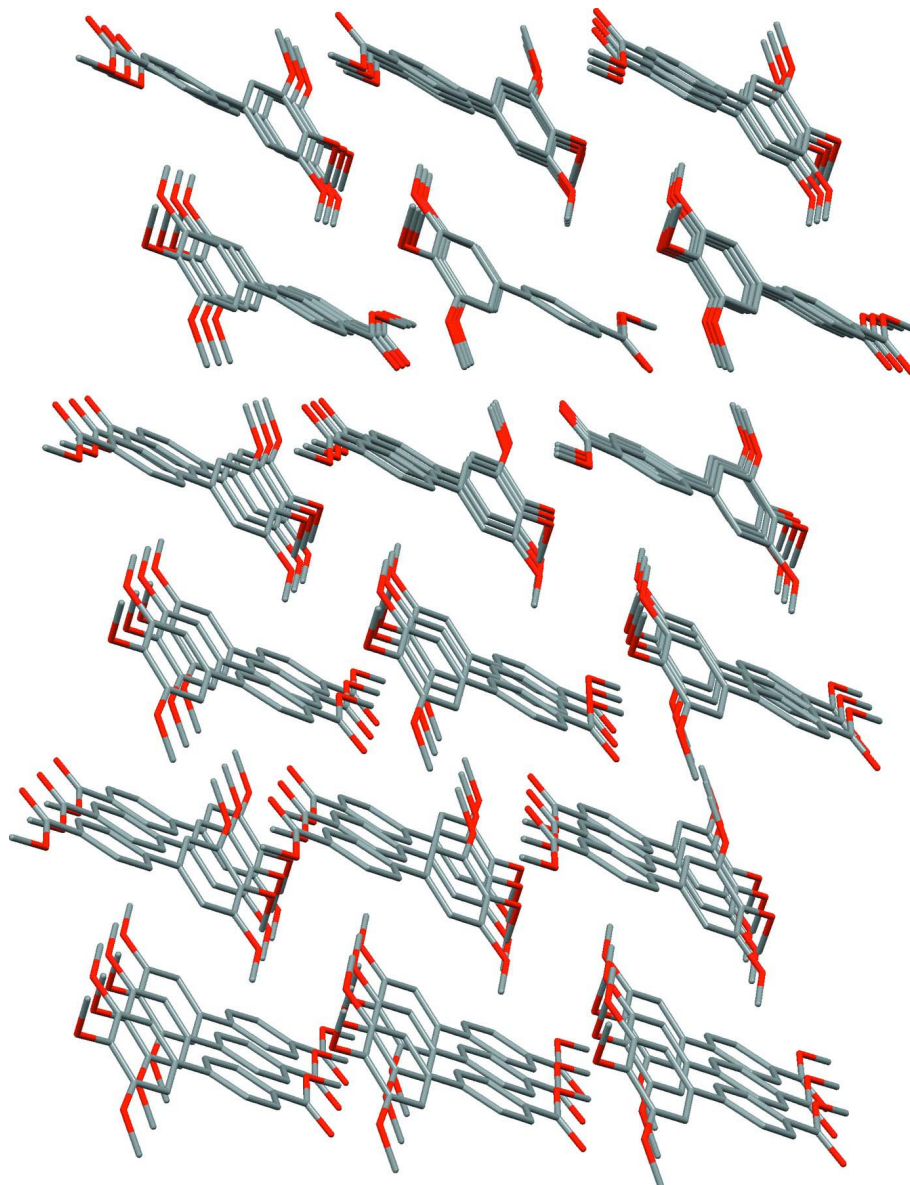
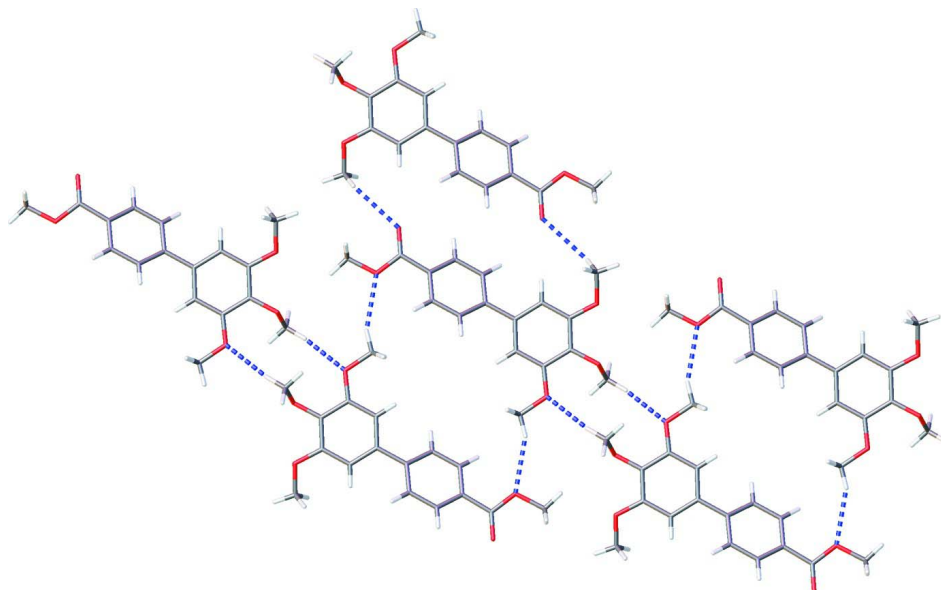
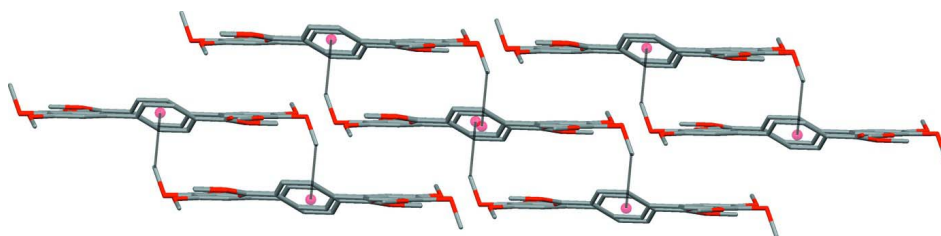


Figure 2

Molecular packing along *a*-axis. Hydrogen atoms are omitted for clarity.

**Figure 3**

View of C–H...O contact network on a single molecule layer.

**Figure 4**

View along (1 - 2 2) plane showing weak C–H... π interactions between the layers of molecules.

Methyl 3',4',5'-trimethoxybiphenyl-4-carboxylate

Crystal data

$C_{17}H_{18}O_5$

$M_r = 302.31$

Triclinic, $P\bar{1}$

$a = 7.9103$ (5) Å

$b = 8.6054$ (7) Å

$c = 11.8779$ (7) Å

$\alpha = 92.834$ (6)°

$\beta = 92.448$ (5)°

$\gamma = 115.822$ (7)°

$V = 725.07$ (9) Å³

$Z = 2$

$F(000) = 320$

$D_x = 1.385$ Mg m⁻³

Cu $K\alpha$ radiation, $\lambda = 1.5418$ Å

Cell parameters from 3244 reflections

$\theta = 3.7$ – 76.2 °

$\mu = 0.84$ mm⁻¹

$T = 123$ K

Plate, colourless

$0.49 \times 0.23 \times 0.10$ mm

Data collection

Agilent SuperNova (Dual source with Cu, Atlas)

diffractometer

Radiation source: SuperNova (Cu) X-ray

Source

Mirror monochromator

Detector resolution: 10.3953 pixels mm⁻¹

ω scans

Absorption correction: analytical

(*CrysAlis PRO*; Agilent, 2010)

$T_{\min} = 0.827$, $T_{\max} = 0.951$

4547 measured reflections

2731 independent reflections
 2524 reflections with $I > 2\sigma(I)$
 $R_{\text{int}} = 0.016$
 $\theta_{\text{max}} = 70.0^\circ$, $\theta_{\text{min}} = 3.7^\circ$

$h = -6 \rightarrow 9$
 $k = -10 \rightarrow 10$
 $l = -14 \rightarrow 14$

Refinement

Refinement on F^2
 Least-squares matrix: full
 $R[F^2 > 2\sigma(F^2)] = 0.034$
 $wR(F^2) = 0.096$
 $S = 1.05$
 2731 reflections
 204 parameters
 0 restraints
 Primary atom site location: structure-invariant
 direct methods
 Secondary atom site location: difference Fourier
 map

Hydrogen site location: inferred from
 neighbouring sites
 H-atom parameters constrained
 $w = 1/[\sigma^2(F_o^2) + (0.0554P)^2 + 0.167P]$
 where $P = (F_o^2 + 2F_c^2)/3$
 $(\Delta/\sigma)_{\text{max}} = 0.001$
 $\Delta\rho_{\text{max}} = 0.26 \text{ e } \text{\AA}^{-3}$
 $\Delta\rho_{\text{min}} = -0.25 \text{ e } \text{\AA}^{-3}$
 Extinction correction: *SHELXL97* (Sheldrick,
 2008), $F_c^* = kF_c[1 + 0.001x F_c^2 \lambda^3 / \sin(2\theta)]^{-1/4}$
 Extinction coefficient: 0.0068 (13)

Special details

Experimental. (CrysAlisPro; Agilent 2010)

Geometry. All e.s.d.'s (except the e.s.d. in the dihedral angle between two l.s. planes) are estimated using the full covariance matrix. The cell e.s.d.'s are taken into account individually in the estimation of e.s.d.'s in distances, angles and torsion angles; correlations between e.s.d.'s in cell parameters are only used when they are defined by crystal symmetry. An approximate (isotropic) treatment of cell e.s.d.'s is used for estimating e.s.d.'s involving l.s. planes.

Refinement. Refinement of F^2 against ALL reflections. The weighted R -factor wR and goodness of fit S are based on F^2 , conventional R -factors R are based on F , with F set to zero for negative F^2 . The threshold expression of $F^2 > \sigma(F^2)$ is used only for calculating R -factors(gt) *etc.* and is not relevant to the choice of reflections for refinement. R -factors based on F^2 are statistically about twice as large as those based on F , and R -factors based on ALL data will be even larger.

Fractional atomic coordinates and isotropic or equivalent isotropic displacement parameters (\AA^2)

| | <i>x</i> | <i>y</i> | <i>z</i> | $U_{\text{iso}}^*/U_{\text{eq}}$ |
|-----|--------------|--------------|-------------|----------------------------------|
| O20 | 0.15945 (10) | 0.37481 (10) | 0.32775 (6) | 0.0189 (2) |
| O17 | 0.09397 (11) | 0.16999 (10) | 0.13913 (7) | 0.0215 (2) |
| O2 | 1.52912 (10) | 1.04374 (10) | 0.31139 (7) | 0.0209 (2) |
| O14 | 0.37423 (11) | 0.19633 (11) | 0.00966 (7) | 0.0228 (2) |
| O4 | 1.43214 (11) | 1.16372 (11) | 0.45157 (7) | 0.0249 (2) |
| C19 | 0.31151 (15) | 0.40188 (14) | 0.26702 (9) | 0.0164 (2) |
| C22 | 0.49386 (15) | 0.52658 (14) | 0.29919 (9) | 0.0164 (2) |
| H22 | 0.5177 | 0.6002 | 0.3661 | 0.020* |
| C16 | 0.27386 (15) | 0.29495 (14) | 0.16769 (9) | 0.0174 (2) |
| C6 | 1.17401 (15) | 0.76841 (15) | 0.27483 (9) | 0.0185 (2) |
| H6 | 1.2780 | 0.7473 | 0.2559 | 0.022* |
| C7 | 0.99186 (15) | 0.64548 (14) | 0.24261 (9) | 0.0183 (2) |
| H7 | 0.9724 | 0.5398 | 0.2030 | 0.022* |
| C11 | 0.64163 (15) | 0.54313 (14) | 0.23285 (9) | 0.0166 (2) |
| C10 | 1.05099 (15) | 0.95224 (14) | 0.36160 (9) | 0.0191 (2) |
| H10 | 1.0707 | 1.0566 | 0.4032 | 0.023* |
| C5 | 1.20468 (15) | 0.92276 (14) | 0.33487 (9) | 0.0168 (2) |
| C8 | 0.83642 (15) | 0.67484 (14) | 0.26762 (9) | 0.0164 (2) |

| | | | | |
|------|--------------|--------------|---------------|------------|
| C18 | 0.00490 (16) | 0.20396 (16) | 0.04195 (11) | 0.0254 (3) |
| H18A | 0.0834 | 0.2196 | -0.0221 | 0.038* |
| H18B | -0.0109 | 0.3094 | 0.0586 | 0.038* |
| H18C | -0.1187 | 0.1061 | 0.0230 | 0.038* |
| C9 | 0.86947 (15) | 0.83046 (14) | 0.32792 (10) | 0.0190 (2) |
| H9 | 0.7660 | 0.8529 | 0.3460 | 0.023* |
| C3 | 1.39732 (15) | 1.05633 (14) | 0.37365 (9) | 0.0180 (2) |
| C13 | 0.42300 (16) | 0.31014 (14) | 0.10261 (9) | 0.0183 (2) |
| C15 | 0.51955 (16) | 0.20895 (16) | -0.06177 (10) | 0.0235 (3) |
| H15A | 0.4656 | 0.1228 | -0.1263 | 0.035* |
| H15B | 0.6151 | 0.1876 | -0.0190 | 0.035* |
| H15C | 0.5778 | 0.3252 | -0.0890 | 0.035* |
| C12 | 0.60543 (15) | 0.43431 (14) | 0.13456 (9) | 0.0181 (2) |
| H12 | 0.7057 | 0.4451 | 0.0894 | 0.022* |
| C21 | 0.19948 (16) | 0.44995 (16) | 0.44155 (9) | 0.0225 (3) |
| H21A | 0.2520 | 0.5762 | 0.4413 | 0.034* |
| H21B | 0.2908 | 0.4186 | 0.4804 | 0.034* |
| H21C | 0.0831 | 0.4065 | 0.4809 | 0.034* |
| C1 | 1.72008 (15) | 1.17042 (15) | 0.34262 (11) | 0.0229 (3) |
| H1A | 1.8043 | 1.1574 | 0.2888 | 0.034* |
| H1B | 1.7580 | 1.1529 | 0.4188 | 0.034* |
| H1C | 1.7275 | 1.2870 | 0.3415 | 0.034* |

Atomic displacement parameters (Å²)

| | U^{11} | U^{22} | U^{33} | U^{12} | U^{13} | U^{23} |
|-----|------------|------------|------------|-------------|-------------|-------------|
| O20 | 0.0124 (4) | 0.0220 (4) | 0.0179 (4) | 0.0041 (3) | 0.0012 (3) | -0.0038 (3) |
| O17 | 0.0139 (4) | 0.0212 (4) | 0.0202 (4) | -0.0003 (3) | -0.0014 (3) | -0.0019 (3) |
| O2 | 0.0114 (4) | 0.0209 (4) | 0.0239 (4) | 0.0017 (3) | 0.0009 (3) | -0.0050 (3) |
| O14 | 0.0173 (4) | 0.0238 (4) | 0.0196 (4) | 0.0029 (3) | 0.0015 (3) | -0.0086 (3) |
| O4 | 0.0183 (4) | 0.0222 (4) | 0.0269 (4) | 0.0034 (3) | -0.0004 (3) | -0.0090 (3) |
| C19 | 0.0137 (5) | 0.0174 (5) | 0.0174 (5) | 0.0061 (4) | 0.0014 (4) | 0.0017 (4) |
| C22 | 0.0148 (5) | 0.0159 (5) | 0.0158 (5) | 0.0048 (4) | -0.0011 (4) | -0.0018 (4) |
| C16 | 0.0125 (5) | 0.0158 (5) | 0.0185 (5) | 0.0016 (4) | -0.0017 (4) | -0.0010 (4) |
| C6 | 0.0139 (5) | 0.0210 (5) | 0.0191 (5) | 0.0067 (4) | 0.0015 (4) | -0.0018 (4) |
| C7 | 0.0160 (5) | 0.0177 (5) | 0.0180 (5) | 0.0052 (4) | 0.0000 (4) | -0.0045 (4) |
| C11 | 0.0141 (5) | 0.0157 (5) | 0.0179 (5) | 0.0048 (4) | -0.0008 (4) | 0.0007 (4) |
| C10 | 0.0173 (5) | 0.0162 (5) | 0.0211 (5) | 0.0052 (4) | 0.0023 (4) | -0.0022 (4) |
| C5 | 0.0141 (5) | 0.0174 (5) | 0.0150 (5) | 0.0035 (4) | 0.0004 (4) | 0.0004 (4) |
| C8 | 0.0148 (5) | 0.0167 (5) | 0.0146 (5) | 0.0040 (4) | 0.0005 (4) | 0.0005 (4) |
| C18 | 0.0174 (5) | 0.0251 (6) | 0.0294 (6) | 0.0066 (5) | -0.0066 (5) | -0.0042 (5) |
| C9 | 0.0144 (5) | 0.0183 (5) | 0.0227 (6) | 0.0058 (4) | 0.0021 (4) | -0.0011 (4) |
| C3 | 0.0160 (5) | 0.0175 (5) | 0.0184 (5) | 0.0056 (4) | 0.0011 (4) | 0.0004 (4) |
| C13 | 0.0185 (5) | 0.0178 (5) | 0.0158 (5) | 0.0059 (4) | -0.0006 (4) | -0.0019 (4) |
| C15 | 0.0214 (6) | 0.0264 (6) | 0.0200 (6) | 0.0084 (5) | 0.0031 (4) | -0.0054 (5) |
| C12 | 0.0143 (5) | 0.0193 (5) | 0.0183 (5) | 0.0055 (4) | 0.0013 (4) | -0.0006 (4) |
| C21 | 0.0173 (5) | 0.0282 (6) | 0.0176 (6) | 0.0063 (5) | 0.0027 (4) | -0.0032 (4) |
| C1 | 0.0120 (5) | 0.0201 (6) | 0.0298 (6) | 0.0012 (4) | 0.0000 (4) | -0.0011 (5) |

Geometric parameters (Å, °)

| | | | |
|-------------|-------------|---------------|-------------|
| O20—C19 | 1.3667 (13) | C10—H10 | 0.9500 |
| O20—C21 | 1.4298 (13) | C10—C5 | 1.3916 (15) |
| O17—C16 | 1.3733 (13) | C10—C9 | 1.3851 (16) |
| O17—C18 | 1.4345 (14) | C5—C3 | 1.4891 (15) |
| O2—C3 | 1.3424 (13) | C8—C9 | 1.3997 (15) |
| O2—C1 | 1.4442 (13) | C18—H18A | 0.9800 |
| O14—C13 | 1.3618 (13) | C18—H18B | 0.9800 |
| O14—C15 | 1.4271 (13) | C18—H18C | 0.9800 |
| O4—C3 | 1.2076 (14) | C9—H9 | 0.9500 |
| C19—C22 | 1.3937 (15) | C13—C12 | 1.3921 (15) |
| C19—C16 | 1.3969 (15) | C15—H15A | 0.9800 |
| C22—H22 | 0.9500 | C15—H15B | 0.9800 |
| C22—C11 | 1.3972 (15) | C15—H15C | 0.9800 |
| C16—C13 | 1.4000 (16) | C12—H12 | 0.9500 |
| C6—H6 | 0.9500 | C21—H21A | 0.9800 |
| C6—C7 | 1.3881 (15) | C21—H21B | 0.9800 |
| C6—C5 | 1.3937 (15) | C21—H21C | 0.9800 |
| C7—H7 | 0.9500 | C1—H1A | 0.9800 |
| C7—C8 | 1.3994 (15) | C1—H1B | 0.9800 |
| C11—C8 | 1.4857 (14) | C1—H1C | 0.9800 |
| C11—C12 | 1.3971 (15) | | |
| | | | |
| C19—O20—C21 | 116.33 (8) | H18A—C18—H18B | 109.5 |
| C16—O17—C18 | 113.77 (9) | H18A—C18—H18C | 109.5 |
| C3—O2—C1 | 115.40 (8) | H18B—C18—H18C | 109.5 |
| C13—O14—C15 | 117.61 (9) | C10—C9—C8 | 120.93 (10) |
| O20—C19—C22 | 123.79 (10) | C10—C9—H9 | 119.5 |
| O20—C19—C16 | 115.53 (9) | C8—C9—H9 | 119.5 |
| C22—C19—C16 | 120.67 (10) | O2—C3—C5 | 111.90 (9) |
| C19—C22—H22 | 120.1 | O4—C3—O2 | 123.63 (10) |
| C19—C22—C11 | 119.89 (10) | O4—C3—C5 | 124.47 (10) |
| C11—C22—H22 | 120.1 | O14—C13—C16 | 115.08 (10) |
| O17—C16—C19 | 119.67 (10) | O14—C13—C12 | 124.58 (10) |
| O17—C16—C13 | 121.07 (10) | C12—C13—C16 | 120.34 (10) |
| C19—C16—C13 | 119.14 (10) | O14—C15—H15A | 109.5 |
| C7—C6—H6 | 119.9 | O14—C15—H15B | 109.5 |
| C7—C6—C5 | 120.16 (10) | O14—C15—H15C | 109.5 |
| C5—C6—H6 | 119.9 | H15A—C15—H15B | 109.5 |
| C6—C7—H7 | 119.5 | H15A—C15—H15C | 109.5 |
| C6—C7—C8 | 121.03 (10) | H15B—C15—H15C | 109.5 |
| C8—C7—H7 | 119.5 | C11—C12—H12 | 119.9 |
| C22—C11—C8 | 119.97 (10) | C13—C12—C11 | 120.23 (10) |
| C12—C11—C22 | 119.69 (10) | C13—C12—H12 | 119.9 |
| C12—C11—C8 | 120.34 (10) | O20—C21—H21A | 109.5 |
| C5—C10—H10 | 119.8 | O20—C21—H21B | 109.5 |
| C9—C10—H10 | 119.8 | O20—C21—H21C | 109.5 |

| | | | |
|-----------------|--------------|-----------------|--------------|
| C9—C10—C5 | 120.44 (10) | H21A—C21—H21B | 109.5 |
| C6—C5—C3 | 122.00 (10) | H21A—C21—H21C | 109.5 |
| C10—C5—C6 | 119.29 (10) | H21B—C21—H21C | 109.5 |
| C10—C5—C3 | 118.69 (10) | O2—C1—H1A | 109.5 |
| C7—C8—C11 | 120.91 (10) | O2—C1—H1B | 109.5 |
| C7—C8—C9 | 118.14 (10) | O2—C1—H1C | 109.5 |
| C9—C8—C11 | 120.95 (10) | H1A—C1—H1B | 109.5 |
| O17—C18—H18A | 109.5 | H1A—C1—H1C | 109.5 |
| O17—C18—H18B | 109.5 | H1B—C1—H1C | 109.5 |
| O17—C18—H18C | 109.5 | | |
| O20—C19—C22—C11 | 178.85 (10) | C7—C6—C5—C10 | -0.25 (17) |
| O20—C19—C16—O17 | -1.73 (15) | C7—C6—C5—C3 | 178.45 (10) |
| O20—C19—C16—C13 | -177.75 (10) | C7—C8—C9—C10 | 0.19 (17) |
| O17—C16—C13—O14 | 1.62 (16) | C11—C8—C9—C10 | 179.15 (10) |
| O17—C16—C13—C12 | -178.14 (10) | C10—C5—C3—O2 | -157.96 (10) |
| O14—C13—C12—C11 | -178.77 (10) | C10—C5—C3—O4 | 21.96 (17) |
| C19—C22—C11—C8 | -179.40 (9) | C5—C6—C7—C8 | 1.18 (17) |
| C19—C22—C11—C12 | -0.02 (16) | C5—C10—C9—C8 | 0.72 (17) |
| C19—C16—C13—O14 | 177.58 (10) | C8—C11—C12—C13 | 179.52 (10) |
| C19—C16—C13—C12 | -2.18 (17) | C18—O17—C16—C19 | 111.07 (11) |
| C22—C19—C16—O17 | 178.33 (9) | C18—O17—C16—C13 | -72.99 (13) |
| C22—C19—C16—C13 | 2.31 (17) | C9—C10—C5—C6 | -0.70 (17) |
| C22—C11—C8—C7 | 148.15 (11) | C9—C10—C5—C3 | -179.43 (10) |
| C22—C11—C8—C9 | -30.78 (15) | C15—O14—C13—C16 | 178.23 (10) |
| C22—C11—C12—C13 | 0.14 (16) | C15—O14—C13—C12 | -2.02 (16) |
| C16—C19—C22—C11 | -1.23 (16) | C12—C11—C8—C7 | -31.23 (16) |
| C16—C13—C12—C11 | 0.97 (17) | C12—C11—C8—C9 | 149.84 (11) |
| C6—C7—C8—C11 | 179.90 (10) | C21—O20—C19—C22 | -15.21 (15) |
| C6—C7—C8—C9 | -1.14 (16) | C21—O20—C19—C16 | 164.86 (10) |
| C6—C5—C3—O2 | 23.34 (15) | C1—O2—C3—O4 | -0.72 (16) |
| C6—C5—C3—O4 | -156.74 (12) | C1—O2—C3—C5 | 179.20 (9) |

Hydrogen-bond geometry (Å, °)

| <i>D</i> —H \cdots <i>A</i> | <i>D</i> —H | H \cdots <i>A</i> | <i>D</i> \cdots <i>A</i> | <i>D</i> —H \cdots <i>A</i> |
|-------------------------------------|-------------|---------------------|----------------------------|-------------------------------|
| C15—H15A \cdots O2 ⁱ | 0.98 | 2.58 | 3.4933 (15) | 156 |
| C18—H18C \cdots O14 ⁱⁱ | 0.98 | 2.50 | 3.4453 (16) | 161 |

Symmetry codes: (i) $-x+2, -y+1, -z$; (ii) $-x, -y, -z$.