

Acta Crystallographica Section E

Structure Reports

Online

ISSN 1600-5368

2-Methylsulfanyl-1,2,4-triazolo[1,5-a]-quinazoline-5(4H)-thione

Rashad Al-Salahi,^a Mohamed Marzouk,^a Mohamed A. Al-Omar,^a Abd El-Galil E. Amr,^{b,c,†} Seik Weng Ng^{d,e} and Edward R. T. Tiekink^{d,*}

^aDepartment of Pharmaceutical Chemistry, College of Pharmacy, King Saud University, Riyadh 11451, Saudi Arabia, ^bDrug Exploration & Development Chair (DEDC), College of Pharmacy, King Saud University, Riyadh 11451, Saudi Arabia, ^cApplied Organic Chemistry Department, National Research Center, Dokki 12622, Cairo, Egypt, ^dDepartment of Chemistry, University of Malaya, 50603 Kuala Lumpur, Malaysia, and ^eChemistry Department, Faculty of Science, King Abdulaziz University, PO Box 80203 Jeddah, Saudi Arabia
Correspondence e-mail: edward.tiekink@gmail.com

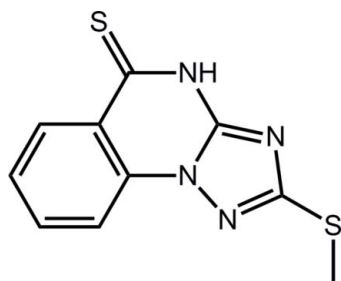
Received 19 February 2013; accepted 19 February 2013

Key indicators: single-crystal X-ray study; $T = 295$ K; mean $\sigma(\text{C}-\text{C}) = 0.003$ Å; R factor = 0.040; wR factor = 0.098; data-to-parameter ratio = 16.0.

In the title compound, $\text{C}_{10}\text{H}_8\text{N}_4\text{S}_2$, comprising fused six-, six- and five-membered rings, the molecule is close to being planar (r.m.s. deviation of the non-H atoms = 0.041 Å). The S-bound methyl group is folded away from the single N atom of the triazole ring and the NH group of the six-membered ring, allowing for the formation of centrosymmetric eight-membered $\{\cdots\text{HNCN}\}_2$ synthons in the crystal. The resulting inversion dimers are connected into supramolecular stacks aligned along the b -axis direction by π - π interactions [centroid-centroid distances = 3.6531 (12) and 3.7182 (12) Å].

Related literature

For background to the biological activity of triazoloquinazolines, see: Pierce *et al.* (2004); Al-Salahi & Geffken (2010, 2011); Al-Salahi *et al.* (2011, 2013).



Experimental

Crystal data

 $\text{C}_{10}\text{H}_8\text{N}_4\text{S}_2$ $M_r = 248.32$

Monoclinic, $P2_1/c$
 $a = 10.5414$ (11) Å
 $b = 4.9335$ (6) Å
 $c = 20.0943$ (19) Å
 $\beta = 99.127$ (10)°
 $V = 1031.79$ (19) Å³

$Z = 4$
Mo $K\alpha$ radiation
 $\mu = 0.49$ mm⁻¹
 $T = 295$ K
 $0.30 \times 0.15 \times 0.05$ mm

Data collection

Agilent SuperNova Dual diffractometer with an Atlas detector
Absorption correction: multi-scan (*CrysAlis PRO*; Agilent, 2011)
 $T_{\min} = 0.864$, $T_{\max} = 1.000$

5096 measured reflections
2389 independent reflections
1667 reflections with $I > 2\sigma(I)$
 $R_{\text{int}} = 0.035$

Refinement

$R[F^2 > 2\sigma(F^2)] = 0.040$
 $wR(F^2) = 0.098$
 $S = 0.93$
2389 reflections
149 parameters
1 restraint

H atoms treated by a mixture of independent and constrained refinement
 $\Delta\rho_{\text{max}} = 0.28$ e Å⁻³
 $\Delta\rho_{\text{min}} = -0.29$ e Å⁻³

Table 1

Hydrogen-bond geometry (Å, °).

| $D-H\cdots A$ | $D-H$ | $H\cdots A$ | $D\cdots A$ | $D-H\cdots A$ |
|--|----------|-------------|-------------|---------------|
| $\text{N1}-\text{H1}\cdots\text{N4}^i$ | 0.87 (1) | 2.07 (1) | 2.931 (2) | 171 (2) |

Symmetry code: (i) $-x + 1, -y + 1, -z + 1$.

Data collection: *CrysAlis PRO* (Agilent, 2011); cell refinement: *CrysAlis PRO*; data reduction: *CrysAlis PRO*; program(s) used to solve structure: *SHELXS97* (Sheldrick, 2008); program(s) used to refine structure: *SHELXL97* (Sheldrick, 2008); molecular graphics: *ORTEP-3 for Windows* (Farrugia, 2012) and *DIAMOND* (Brandenburg, 2006); software used to prepare material for publication: *publCIF* (Westrip, 2010).

The authors are grateful for the sponsorship of the Research Center, College of Pharmacy and the Deanship of Scientific Research, King Saud University. We also thank the Ministry of Higher Education (Malaysia) for funding structural studies through the High-Impact Research scheme (UM.C/HIR-MOHE/SC/12).

Supplementary data and figures for this paper are available from the IUCr electronic archives (Reference: HB7045).

References

- Agilent (2011). *CrysAlis PRO*. Agilent Technologies, Yarnton, England.
Al-Salahi, R., Gamal-Eldeen, A. M., Alanazi, A. M., Al-Omar, M. A., Marzouk, M. A. & Fouda, M. M. G. (2013). *Molecules*, **18**, 1434–1446.
Al-Salahi, R. & Geffken, D. (2010). *Molecules*, **15**, 7016–7034.
Al-Salahi, R. & Geffken, D. (2011). *Synth. Commun.* **41**, 3512–3523.
Al-Salahi, R., Geffken, D. & Koellner, M. (2011). *Chem. Pharm. Bull.* **59**, 730–733.
Brandenburg, K. (2006). *DIAMOND*. Crystal Impact GbR, Bonn, Germany.
Farrugia, L. J. (2012). *J. Appl. Cryst.* **45**, 849–854.
Pierce, A. C., Arnost, M., Davies, R. J., Forster, C. J., Galullo, V., Grey, R., Ledebauer, M., Tian, S.-K., Xu, J., Binch, H., Ledford, B., Messersmith, D., Nanthakumar, S. & Jayaraj, A. (2004). *Chem. Abstr.* **141**, 23537.
Sheldrick, G. M. (2008). *Acta Cryst.* **A64**, 112–122.
Westrip, S. P. (2010). *J. Appl. Cryst.* **43**, 920–925.

supporting information

Acta Cryst. (2013). E69, o434 [doi:10.1107/S1600536813004881]

2-Methylsulfanyl-1,2,4-triazolo[1,5-*a*]quinazoline-5(4*H*)-thione

Rashad Al-Salahi, Mohamed Marzouk, Mohamed A. Al-Omar, Abd El-Galil E. Amr, Seik Weng Ng and Edward R. T. Tiekink

S1. Comment

A series of triazoloquinazolines, which originated from *N*-cyanoimidocarbonates as synthons, has been shown to exhibit diverse biological activities. For example, 2-aminoalkyl(aryl)-[1,2,4]triazolo[1,5-*a*]quinazolin-5-ones were found to be potent protein kinase inhibitors (Pierce *et al.*, 2004), the 2,5-dialkoxy-[1,2,4]triazolo[1,5-*a*]quinazolines have shown activity as adenosine antagonists (Al-Salahi & Geffken, 2010; Al-Salahi & Geffken, 2011; Al-Salahi *et al.*, 2011) whereas the related alkylated 1,2,4-triazolo[1,5-*a*]quinazolin-5-ones have been proven to be cytotoxic and to possess anti-inflammatory activity (Al-Salahi *et al.*, 2013). In view of the aforementioned biological activities of diverse triazoloquinazolines and in continuation of our ongoing studies dealing with the chemistry of *N*-cyanoimidocarbonates and their precursors, we report herein the results of our study of thionation of 2-methylsulfanyl-4*H*-[1,2,4]triazolo[1,5-*a*]quinazolin-5-one to obtain (I). Herein, the crystal and molecular structure of the title compound is described.

The molecular structure of (I), Fig. 1, comprises fused six-, six- and five membered rings that are co-planar with the r.m.s. deviation of the 13 non-hydrogen atoms being 0.028 Å. Indeed, the entire molecule is close to planar (r.m.s. = 0.041 Å) with the maximum deviations from the least-squares plane being 0.047 (2) Å for atom N4 and -0.072 (2) Å for methyl-C10. The *S*-bound methyl group is orientated towards the N3 atom and may be regarded as *anti* to the thione-S2 atom.

The most prominent feature of the crystal packing is the formation of centrosymmetric eight-membered { \cdots HNCN \cdots }₂ synthons, Table 1. These are connected into stacks along the *b* axis by π – π interactions whereby the triazole ring straddles the benzene [inter-centroid distance = 3.6531 (12) Å, angle of inclination = 3.04 (11)°] and pyrimidine [3.7182 (12) Å, 1.90 (10)°] rings of translationally related molecules, Fig. 2 (symmetry operation $x, -1 + y, z$). There are no specific intermolecular interactions between stacks, Fig. 3.

S2. Experimental

2-Methylsulfanyl-4*H*-[1,2,4]triazolo[1,5-*a*]quinazolin-5-one (1 mmol) was refluxed with phosphorous pentasulfide (1 mmol) in absolute pyridine (5 ml) for 2 h. After cooling the reaction mixture, it was poured into ice/water. The yellow precipitate that separated was filtered off and washed thoroughly with water. Recrystallization as yellow prisms was from a mixture of toluene and DMF (8:2 *v/v*).

S3. Refinement

The C-bound H atoms were geometrically placed (C—H = 0.93–0.96 Å) and refined as riding with $U_{iso}(H) = 1.2$ – $1.5U_{eq}(C)$. The N-bound-H atom was refined with the distance restraint N—H = 0.88±0.01 Å and free U_{iso} .

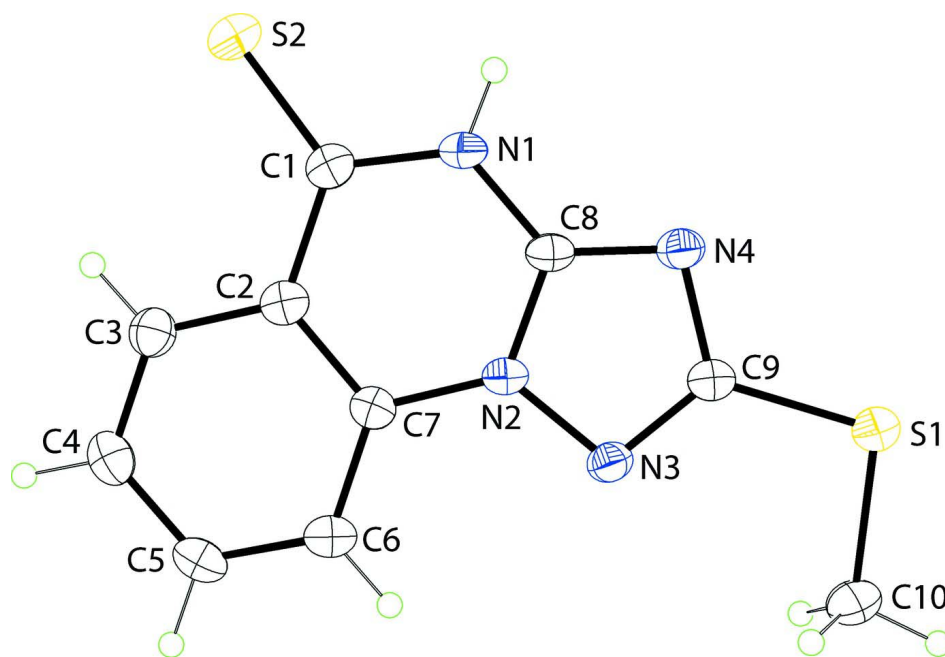


Figure 1

The molecular structure of (I) showing displacement ellipsoids at the 35% probability level.

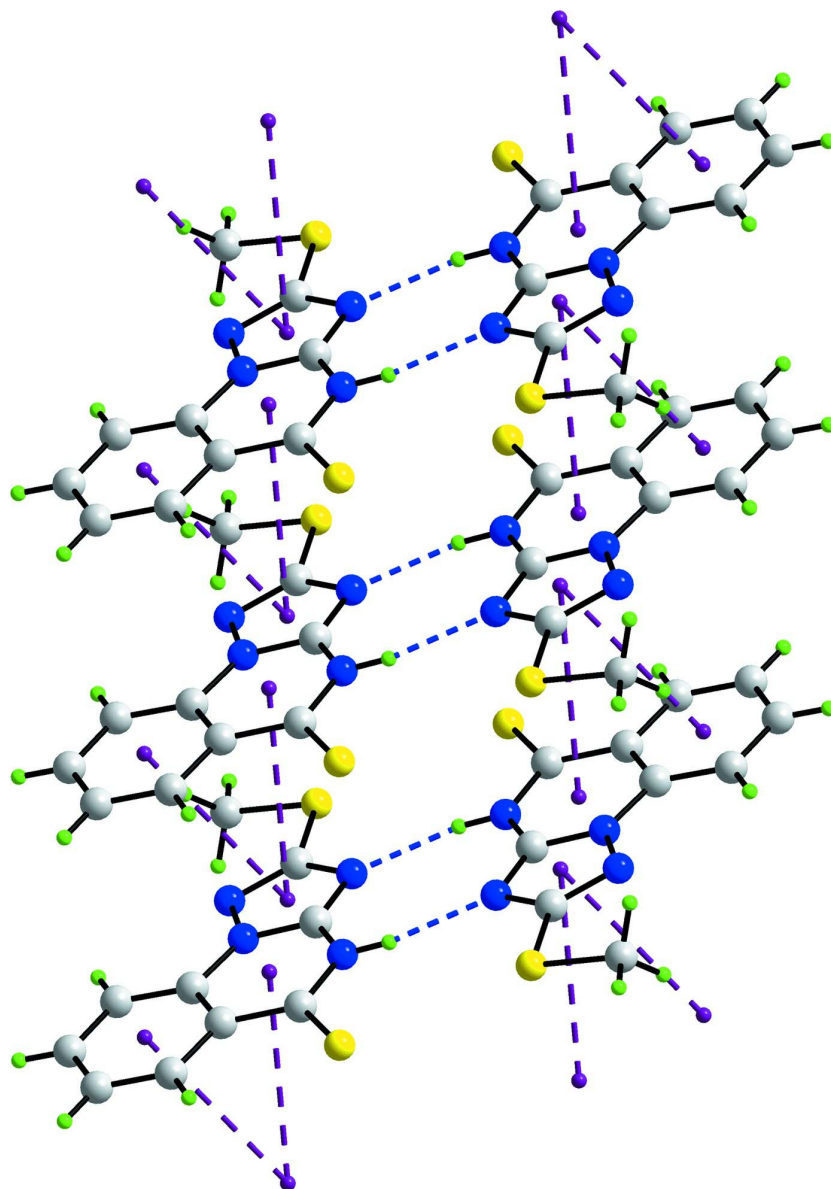
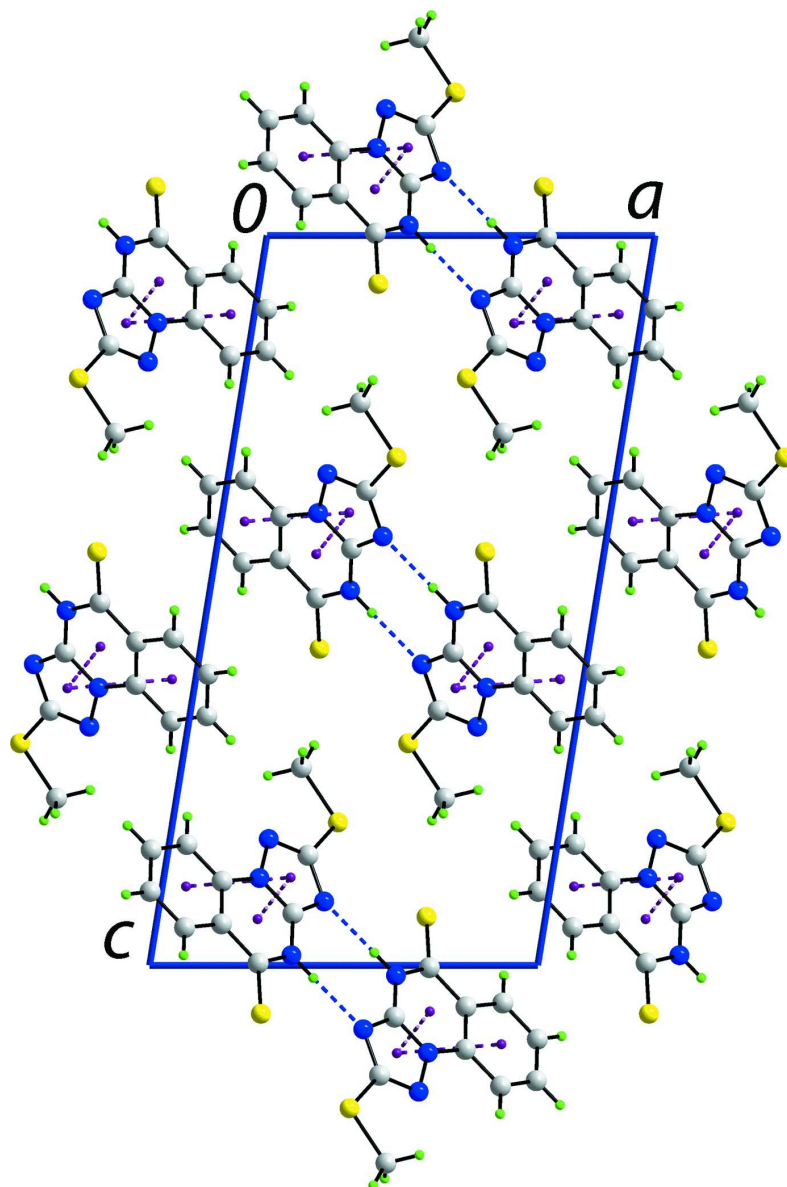


Figure 2

A view of the supramolecular chain along the *b* axis in (I) sustained by N—H···N and π — π interactions, shown as blue and purple dashed lines, respectively.

**Figure 3**

view in projection down the b axis of the crystal packing in (I). The $\text{N—H}\cdots\text{N}$ and $\pi\text{—}\pi$ interactions are shown as blue and purple dashed lines, respectively.

2-Methylsulfanyl-1,2,4-triazolo[1,5-a]quinazoline-5(4H)-thione

Crystal data

$\text{C}_{10}\text{H}_8\text{N}_4\text{S}_2$

$M_r = 248.32$

Monoclinic, $P2_1/c$

Hall symbol: $-P\ 2_1/c$

$a = 10.5414$ (11) Å

$b = 4.9335$ (6) Å

$c = 20.0943$ (19) Å

$\beta = 99.127$ (10)°

$V = 1031.79$ (19) Å³

$Z = 4$

$F(000) = 512$

$D_x = 1.599$ Mg m⁻³

Mo $K\alpha$ radiation, $\lambda = 0.71073$ Å

Cell parameters from 1314 reflections

$\theta = 3.1\text{--}27.5^\circ$

$\mu = 0.49$ mm⁻¹

$T = 295$ K
Prism, yellow

$0.30 \times 0.15 \times 0.05$ mm

Data collection

Agilent SuperNova Dual
diffractometer with an Atlas detector
Radiation source: SuperNova (Mo) X-ray
Source
Mirror monochromator
Detector resolution: 10.4041 pixels mm^{-1}
 ω scan
Absorption correction: multi-scan
(*CrysAlis PRO*; Agilent, 2011)

$T_{\min} = 0.864$, $T_{\max} = 1.000$
5096 measured reflections
2389 independent reflections
1667 reflections with $I > 2\sigma(I)$
 $R_{\text{int}} = 0.035$
 $\theta_{\max} = 27.6^\circ$, $\theta_{\min} = 3.1^\circ$
 $h = -13 \rightarrow 12$
 $k = -5 \rightarrow 6$
 $l = -22 \rightarrow 26$

Refinement

Refinement on F^2
Least-squares matrix: full
 $R[F^2 > 2\sigma(F^2)] = 0.040$
 $wR(F^2) = 0.098$
 $S = 0.93$
2389 reflections
149 parameters
1 restraint
Primary atom site location: structure-invariant
direct methods

Secondary atom site location: difference Fourier
map
Hydrogen site location: inferred from
neighbouring sites
H atoms treated by a mixture of independent
and constrained refinement
 $w = 1/[\sigma^2(F_o^2) + (0.0452P)^2]$
where $P = (F_o^2 + 2F_c^2)/3$
 $(\Delta/\sigma)_{\max} = 0.001$
 $\Delta\rho_{\max} = 0.28 \text{ e } \text{\AA}^{-3}$
 $\Delta\rho_{\min} = -0.29 \text{ e } \text{\AA}^{-3}$

Special details

Geometry. All e.s.d.'s (except the e.s.d. in the dihedral angle between two l.s. planes) are estimated using the full covariance matrix. The cell e.s.d.'s are taken into account individually in the estimation of e.s.d.'s in distances, angles and torsion angles; correlations between e.s.d.'s in cell parameters are only used when they are defined by crystal symmetry. An approximate (isotropic) treatment of cell e.s.d.'s is used for estimating e.s.d.'s involving l.s. planes.

Refinement. Refinement of F^2 against ALL reflections. The weighted R -factor wR and goodness of fit S are based on F^2 , conventional R -factors R are based on F , with F set to zero for negative F^2 . The threshold expression of $F^2 > \sigma(F^2)$ is used only for calculating R -factors(gt) *etc.* and is not relevant to the choice of reflections for refinement. R -factors based on F^2 are statistically about twice as large as those based on F , and R -factors based on ALL data will be even larger.

Fractional atomic coordinates and isotropic or equivalent isotropic displacement parameters (\AA^2)

| | x | y | z | $U_{\text{iso}}^*/U_{\text{eq}}$ |
|----|--------------|--------------|--------------|----------------------------------|
| S1 | 0.57415 (5) | 0.09061 (12) | 0.69579 (3) | 0.03633 (18) |
| S2 | 0.69330 (6) | 1.14441 (14) | 0.43364 (3) | 0.0455 (2) |
| N1 | 0.63890 (16) | 0.7597 (4) | 0.51388 (8) | 0.0334 (4) |
| H1 | 0.5735 (15) | 0.728 (5) | 0.4828 (9) | 0.052 (7)* |
| N2 | 0.75333 (14) | 0.6491 (3) | 0.61961 (8) | 0.0288 (4) |
| N3 | 0.74549 (16) | 0.4772 (3) | 0.67308 (8) | 0.0309 (4) |
| N4 | 0.57690 (15) | 0.4139 (4) | 0.58757 (8) | 0.0325 (4) |
| C1 | 0.72154 (19) | 0.9632 (4) | 0.50311 (10) | 0.0316 (5) |
| C2 | 0.83231 (19) | 1.0021 (4) | 0.55680 (10) | 0.0306 (5) |
| C3 | 0.92564 (19) | 1.1992 (5) | 0.55164 (11) | 0.0363 (5) |
| H3 | 0.9169 | 1.3102 | 0.5138 | 0.044* |
| C4 | 1.0296 (2) | 1.2317 (5) | 0.60125 (11) | 0.0403 (6) |
| H4 | 1.0906 | 1.3640 | 0.5970 | 0.048* |

| | | | | |
|------|--------------|------------|--------------|------------|
| C5 | 1.04387 (19) | 1.0665 (5) | 0.65804 (11) | 0.0385 (5) |
| H5 | 1.1151 | 1.0883 | 0.6914 | 0.046* |
| C6 | 0.95443 (19) | 0.8723 (4) | 0.66552 (10) | 0.0358 (5) |
| H6 | 0.9644 | 0.7626 | 0.7036 | 0.043* |
| C7 | 0.84829 (18) | 0.8415 (4) | 0.61517 (10) | 0.0292 (5) |
| C8 | 0.65228 (18) | 0.6076 (4) | 0.57102 (9) | 0.0294 (5) |
| C9 | 0.63785 (18) | 0.3432 (4) | 0.65066 (10) | 0.0296 (5) |
| C10 | 0.6908 (2) | 0.0885 (5) | 0.77103 (11) | 0.0474 (6) |
| H10A | 0.6676 | -0.0456 | 0.8016 | 0.071* |
| H10B | 0.6935 | 0.2637 | 0.7920 | 0.071* |
| H10C | 0.7738 | 0.0461 | 0.7599 | 0.071* |

Atomic displacement parameters (Å²)

| | U^{11} | U^{22} | U^{33} | U^{12} | U^{13} | U^{23} |
|-----|-------------|-------------|-------------|--------------|--------------|--------------|
| S1 | 0.0370 (3) | 0.0390 (4) | 0.0320 (3) | -0.0018 (3) | 0.0023 (2) | 0.0034 (3) |
| S2 | 0.0496 (4) | 0.0525 (4) | 0.0330 (3) | -0.0007 (3) | 0.0019 (3) | 0.0110 (3) |
| N1 | 0.0337 (9) | 0.0388 (11) | 0.0247 (9) | -0.0014 (9) | -0.0046 (8) | 0.0023 (8) |
| N2 | 0.0291 (8) | 0.0321 (10) | 0.0237 (8) | 0.0019 (8) | -0.0006 (7) | 0.0006 (8) |
| N3 | 0.0339 (9) | 0.0321 (10) | 0.0256 (9) | 0.0011 (8) | 0.0015 (7) | 0.0028 (8) |
| N4 | 0.0328 (9) | 0.0369 (11) | 0.0266 (9) | 0.0011 (9) | 0.0007 (7) | 0.0016 (8) |
| C1 | 0.0351 (11) | 0.0320 (12) | 0.0285 (11) | 0.0054 (10) | 0.0070 (9) | -0.0012 (9) |
| C2 | 0.0329 (10) | 0.0314 (12) | 0.0282 (11) | 0.0062 (10) | 0.0069 (9) | -0.0035 (9) |
| C3 | 0.0380 (11) | 0.0367 (13) | 0.0354 (12) | -0.0001 (11) | 0.0091 (10) | -0.0006 (10) |
| C4 | 0.0366 (12) | 0.0394 (14) | 0.0457 (13) | -0.0061 (11) | 0.0090 (10) | -0.0064 (12) |
| C5 | 0.0306 (11) | 0.0436 (14) | 0.0387 (12) | 0.0001 (11) | -0.0024 (10) | -0.0089 (11) |
| C6 | 0.0363 (11) | 0.0380 (13) | 0.0313 (11) | 0.0050 (10) | -0.0007 (9) | -0.0009 (10) |
| C7 | 0.0287 (10) | 0.0304 (11) | 0.0283 (11) | 0.0020 (9) | 0.0044 (8) | -0.0040 (9) |
| C8 | 0.0316 (10) | 0.0316 (12) | 0.0234 (10) | 0.0038 (10) | -0.0007 (8) | -0.0027 (9) |
| C9 | 0.0310 (10) | 0.0302 (12) | 0.0270 (10) | 0.0044 (10) | 0.0029 (9) | -0.0020 (9) |
| C10 | 0.0511 (14) | 0.0587 (17) | 0.0299 (12) | -0.0044 (13) | -0.0007 (10) | 0.0097 (12) |

Geometric parameters (Å, °)

| | | | |
|--------|------------|----------|-----------|
| S1—C9 | 1.738 (2) | C2—C3 | 1.399 (3) |
| S1—C10 | 1.791 (2) | C2—C7 | 1.403 (3) |
| S2—C1 | 1.645 (2) | C3—C4 | 1.369 (3) |
| N1—C8 | 1.360 (2) | C3—H3 | 0.9300 |
| N1—C1 | 1.369 (3) | C4—C5 | 1.391 (3) |
| N1—H1 | 0.868 (10) | C4—H4 | 0.9300 |
| N2—C8 | 1.342 (2) | C5—C6 | 1.369 (3) |
| N2—N3 | 1.381 (2) | C5—H5 | 0.9300 |
| N2—C7 | 1.392 (2) | C6—C7 | 1.393 (3) |
| N3—C9 | 1.329 (2) | C6—H6 | 0.9300 |
| N4—C8 | 1.319 (3) | C10—H10A | 0.9600 |
| N4—C9 | 1.372 (2) | C10—H10B | 0.9600 |
| C1—C2 | 1.471 (3) | C10—H10C | 0.9600 |

| | | | |
|-------------|--------------|---------------|-------------|
| C9—S1—C10 | 100.05 (10) | C6—C5—C4 | 120.89 (19) |
| C8—N1—C1 | 123.68 (17) | C6—C5—H5 | 119.6 |
| C8—N1—H1 | 118.3 (16) | C4—C5—H5 | 119.6 |
| C1—N1—H1 | 118.0 (16) | C5—C6—C7 | 119.0 (2) |
| C8—N2—N3 | 109.51 (16) | C5—C6—H6 | 120.5 |
| C8—N2—C7 | 123.58 (17) | C7—C6—H6 | 120.5 |
| N3—N2—C7 | 126.91 (15) | C6—C7—N2 | 122.05 (19) |
| C9—N3—N2 | 101.24 (15) | C6—C7—C2 | 121.4 (2) |
| C8—N4—C9 | 101.80 (16) | N2—C7—C2 | 116.50 (17) |
| N1—C1—C2 | 115.51 (18) | N4—C8—N2 | 111.57 (18) |
| N1—C1—S2 | 119.93 (15) | N4—C8—N1 | 128.80 (17) |
| C2—C1—S2 | 124.56 (17) | N2—C8—N1 | 119.63 (19) |
| C3—C2—C7 | 117.51 (18) | N3—C9—N4 | 115.88 (18) |
| C3—C2—C1 | 121.46 (19) | N3—C9—S1 | 124.04 (15) |
| C7—C2—C1 | 121.0 (2) | N4—C9—S1 | 120.09 (15) |
| C4—C3—C2 | 121.2 (2) | S1—C10—H10A | 109.5 |
| C4—C3—H3 | 119.4 | S1—C10—H10B | 109.5 |
| C2—C3—H3 | 119.4 | H10A—C10—H10B | 109.5 |
| C3—C4—C5 | 119.9 (2) | S1—C10—H10C | 109.5 |
| C3—C4—H4 | 120.0 | H10A—C10—H10C | 109.5 |
| C5—C4—H4 | 120.0 | H10B—C10—H10C | 109.5 |
| | | | |
| C8—N2—N3—C9 | 0.5 (2) | C3—C2—C7—C6 | -1.4 (3) |
| C7—N2—N3—C9 | 179.49 (18) | C1—C2—C7—C6 | 178.41 (19) |
| C8—N1—C1—C2 | 2.8 (3) | C3—C2—C7—N2 | 179.17 (17) |
| C8—N1—C1—S2 | -177.27 (16) | C1—C2—C7—N2 | -1.0 (3) |
| N1—C1—C2—C3 | 178.67 (19) | C9—N4—C8—N2 | 1.2 (2) |
| S2—C1—C2—C3 | -1.3 (3) | C9—N4—C8—N1 | -178.6 (2) |
| N1—C1—C2—C7 | -1.2 (3) | N3—N2—C8—N4 | -1.2 (2) |
| S2—C1—C2—C7 | 178.89 (16) | C7—N2—C8—N4 | 179.82 (17) |
| C7—C2—C3—C4 | 0.9 (3) | N3—N2—C8—N1 | 178.65 (17) |
| C1—C2—C3—C4 | -178.9 (2) | C7—N2—C8—N1 | -0.4 (3) |
| C2—C3—C4—C5 | 0.1 (3) | C1—N1—C8—N4 | 177.7 (2) |
| C3—C4—C5—C6 | -0.6 (3) | C1—N1—C8—N2 | -2.1 (3) |
| C4—C5—C6—C7 | 0.1 (3) | N2—N3—C9—N4 | 0.3 (2) |
| C5—C6—C7—N2 | -179.68 (19) | N2—N3—C9—S1 | 179.79 (14) |
| C5—C6—C7—C2 | 1.0 (3) | C8—N4—C9—N3 | -0.9 (2) |
| C8—N2—C7—C6 | -177.57 (19) | C8—N4—C9—S1 | 179.53 (15) |
| N3—N2—C7—C6 | 3.6 (3) | C10—S1—C9—N3 | 0.4 (2) |
| C8—N2—C7—C2 | 1.8 (3) | C10—S1—C9—N4 | 179.93 (17) |
| N3—N2—C7—C2 | -177.02 (18) | | |

Hydrogen-bond geometry (\AA , $^\circ$)

| $D-H\cdots A$ | $D-H$ | $H\cdots A$ | $D\cdots A$ | $D-H\cdots A$ |
|--------------------|----------|-------------|-------------|---------------|
| $N1-H1\cdots N4^i$ | 0.87 (1) | 2.07 (1) | 2.931 (2) | 171 (2) |

Symmetry code: (i) $-x+1, -y+1, -z+1$.