

Acta Crystallographica Section E

Structure Reports

Online

ISSN 1600-5368

5-Amino-6-methylquinolin-1-ium 3-carboxypropanoate

 Kaliyaperumal Thanigaimani, Nuridayanti Che Khalib,
Suhana Arshad and Ibrahim Abdul Razak*[‡]

School of Physics, Universiti Sains Malaysia, 11800 USM, Penang, Malaysia

Correspondence e-mail: arazaki@usm.my

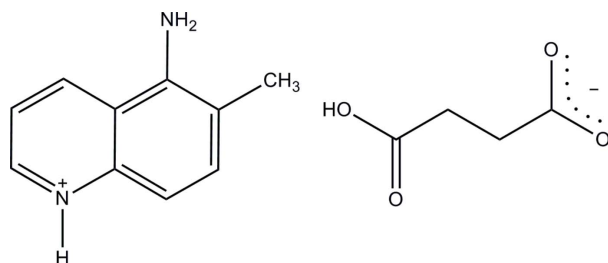
Received 1 March 2013; accepted 8 March 2013

 Key indicators: single-crystal X-ray study; $T = 100$ K; mean $\sigma(\text{C}-\text{C}) = 0.003$ Å;
 R factor = 0.066; wR factor = 0.200; data-to-parameter ratio = 17.0.

The asymmetric unit of the title salt, $\text{C}_{10}\text{H}_{11}\text{N}_2^+ \cdot \text{C}_4\text{H}_5\text{O}_4^-$, consists of two independent 5-amino-6-methylquinolin-1-ium cations and two 3-carboxypropanoate anions. Both cations are protonated at the pyridine N atoms and are essentially planar, with maximum deviations of 0.026 (3) and 0.016 (2) Å. In the crystal, the cations and anions are linked *via* $\text{N}-\text{H} \cdots \text{O}$ and $\text{O}-\text{H} \cdots \text{O}$ hydrogen bonds, forming a layer parallel to the *ab* plane. In the layer, weak $\text{C}-\text{H} \cdots \text{O}$ hydrogen bonds and $\pi-\pi$ stacking interactions, with centroid-to-centroid distances of 3.7283 (15) and 3.8467 (15) Å, are observed. The crystal structure also features weak $\text{C}-\text{H} \cdots \text{O}$ hydrogen bonds between the layers.

Related literature

For background to and the biological activity of quinoline derivatives, see: Sasaki *et al.* (1998); Reux *et al.* (2009); Morimoto *et al.* (1991); Markees *et al.* (1970). For related structures, see: Thanigaimani *et al.* (2013*a,b,c*); Loh *et al.* (2010); Sauer *et al.* (2008). For reference bond-length data, see: Allen *et al.* (1987). For stability of the temperature controller used for data collection, see: Cosier & Glazer (1986).



Experimental

Crystal data

$\text{C}_{10}\text{H}_{11}\text{N}_2^+ \cdot \text{C}_4\text{H}_5\text{O}_4^-$
 $M_r = 276.29$
 Triclinic, $P\bar{1}$
 $a = 8.0784$ (3) Å
 $b = 10.8234$ (4) Å
 $c = 16.4366$ (6) Å
 $\alpha = 91.608$ (2)°
 $\beta = 101.039$ (2)°

$\gamma = 105.782$ (2)°
 $V = 1352.49$ (9) Å³
 $Z = 4$
 Mo $K\alpha$ radiation
 $\mu = 0.10$ mm⁻¹
 $T = 100$ K
 $0.31 \times 0.17 \times 0.16$ mm

Data collection

Bruker SMART APEXII CCD
 area-detector diffractometer
 Absorption correction: multi-scan
 (SADABS; Bruker, 2009)
 $T_{\min} = 0.970$, $T_{\max} = 0.984$

19941 measured reflections
 6733 independent reflections
 4669 reflections with $I > 2\sigma(I)$
 $R_{\text{int}} = 0.048$

Refinement

$R[F^2 > 2\sigma(F^2)] = 0.066$
 $wR(F^2) = 0.200$
 $S = 1.04$
 6733 reflections
 395 parameters
 2 restraints

H atoms treated by a mixture of
 independent and constrained
 refinement
 $\Delta\rho_{\text{max}} = 0.52$ e Å⁻³
 $\Delta\rho_{\text{min}} = -0.35$ e Å⁻³

Table 1

Hydrogen-bond geometry (Å, °).

<i>D</i> — <i>H</i> ··· <i>A</i>	<i>D</i> — <i>H</i>	<i>H</i> ··· <i>A</i>	<i>D</i> ··· <i>A</i>	<i>D</i> — <i>H</i> ··· <i>A</i>
N1A—H1NA···O4A	0.88 (1)	1.78 (1)	2.667 (3)	177 (4)
N1B—H1NB···O4B	0.97 (3)	1.71 (3)	2.664 (3)	170 (3)
O2A—H1OA···O4A ⁱ	0.83 (2)	1.69 (2)	2.520 (2)	176 (3)
O2B—H1OB···O4B ⁱ	0.93 (4)	1.60 (4)	2.525 (2)	179 (4)
N2A—H2NA···O3A ⁱⁱ	0.99 (5)	1.97 (5)	2.931 (3)	163 (4)
N2A—H3NA···O2B ⁱⁱⁱ	0.93 (4)	2.11 (4)	2.937 (3)	149 (3)
N2B—H2NB···O2A ⁱⁱ	0.87 (3)	2.22 (3)	3.037 (3)	157 (3)
N2B—H3NB···O3B ⁱⁱ	0.87 (3)	2.14 (3)	3.001 (3)	172 (3)
C7A—H7AA···O3A ⁱⁱ	0.95	2.42	3.343 (3)	165
C9A—H9AA···O1A ^{iv}	0.95	2.37	3.271 (3)	158
C7B—H7BA···O3B ⁱⁱ	0.95	2.31	3.253 (3)	169
C8B—H8BA···O3B ^v	0.95	2.51	3.323 (3)	143
C9B—H9BA···O4B ^v	0.95	2.52	3.388 (3)	153

Symmetry codes: (i) $x+1, y, z$; (ii) $x, y+1, z$; (iii) $x-1, y+1, z$; (iv) $-x+1, -y+1, -z$; (v) $-x+1, -y+1, -z+1$.

Data collection: APEX2 (Bruker, 2009); cell refinement: SAINT (Bruker, 2009); data reduction: SAINT; program(s) used to solve structure: SHELXTL (Sheldrick, 2008); program(s) used to refine structure: SHELXTL; molecular graphics: SHELXTL; software used to prepare material for publication: SHELXTL and PLATON (Spek, 2009).

The authors thank the Malaysian Government and Universiti Sains Malaysia (USM) for research facilities and a USM Short Term Grant (No. 304/PFIZIK/6312078) to conduct this work. KT thanks the Academy of Sciences for the Developing World and USM for the TWAS-USM fellowship.

Supplementary data and figures for this paper are available from the IUCr electronic archives (Reference: IS5252).

[‡] Thomson Reuters ResearcherID: A-5599-2009.

References

- Allen, F. H., Kennard, O., Watson, D. G., Brammer, L., Orpen, A. G. & Taylor, R. (1987). *J. Chem. Soc. Perkin Trans. 2*, pp. S1–19.
- Bruker (2009). *SADABS, APEX2 and SAINT*. Bruker AXS Inc., Madison, Wisconsin, USA.
- Cosier, J. & Glazer, A. M. (1986). *J. Appl. Cryst.* **19**, 105–107.
- Loh, W.-S., Quah, C. K., Hemamalini, M. & Fun, H.-K. (2010). *Acta Cryst.* **E66**, o2357.
- Markees, D. G., Dewey, V. C. & Kidder, G. W. (1970). *J. Med. Chem.* **13**, 324–326.
- Morimoto, Y., Matsuda, F. & Shirahama, H. (1991). *Synlett*, **3**, 202–203.
- Reux, B., Nevalainen, T., Raitio, K. H. & Koskinen, A. M. P. (2009). *Bioorg. Med. Chem.* **17**, 4441–4447.
- Sasaki, K., Tsurumori, A. & Hirota, T. (1998). *J. Chem. Soc. Perkin Trans. 1*, pp. 3851–3856.
- Sauer, M., Porro, D., Mattanovich, D. & Branduaradi, P. (2008). *Trends Biotechnol.* **26**, 100–108.
- Sheldrick, G. M. (2008). *Acta Cryst.* **A64**, 112–122.
- Spek, A. L. (2009). *Acta Cryst.* **D65**, 148–155.
- Thanigaimani, K., Khalib, N. C., Arshad, S. & Razak, I. A. (2013a). *Acta Cryst.* **E69**, o42–o43.
- Thanigaimani, K., Khalib, N. C., Arshad, S. & Razak, I. A. (2013b). *Acta Cryst.* **E69**, o44.
- Thanigaimani, K., Khalib, N. C., Arshad, S. & Razak, I. A. (2013c). *Acta Cryst.* **E69**, o319–o320.

supporting information

Acta Cryst. (2013). E69, o539–o540 [doi:10.1107/S1600536813006673]

5-Amino-6-methylquinolin-1-ium 3-carboxypropanoate

Kaliyaperumal Thanigaimani, Nuridayanti Che Khalib, Suhana Arshad and Ibrahim Abdul Razak

S1. Comment

Recently, hydrogen-bonding patterns involving quinoline and its derivatives with organic acid have been investigated (Thanigaimani *et al.*, 2013*a,b,c*; Loh *et al.*, 2010). Syntheses of the quinoline derivatives were discussed earlier (Sasaki *et al.*, 1998; Reux *et al.*, 2009). Quinolines and their derivatives are very important compounds because of their wide occurrence in natural products (Morimoto *et al.*, 1991) and biologically active compounds (Markees *et al.*, 1970). Succinic acid derivatives are mostly used in chemicals, food and pharmaceuticals (Sauer *et al.*, 2008). In this paper, we present the X-ray single-crystal structure of 5-amino-6-methylquinolin-1-ium hydrogen succinate (I).

The asymmetric unit of the title salt consists of two crystallographically independent 5-amino-6-methylquinolin-1-ium cations (*A* and *B*) and two 3-carboxypropanoate anions (*A* and *B*) (Fig. 1). Each 5-amino-6-methylquinolin-1-ium cation is essentially planar, with maximum deviations of 0.026 (3) Å for atom C5A in cation *A* and 0.016 (2) Å for C8B atom in cation *B*. In the cations, protonation of atoms N1A and N1B lead to a slight increase in C1A—N1A—C9A [123.1 (2)°] and C1B—N1B—C9B [123.3 (2)°] angles. The bond lengths (Allen *et al.*, 1987) and angles are normal.

In the crystal packing (Fig. 2), the ion units are linked by N1A—H1NA⋯O4A, N1B—H1NB⋯O4B, O2A—H10A⋯O4Aⁱ, O2B—H10B⋯O4Bⁱ, N2A—H2NA⋯O3Aⁱⁱ, N2A—H3NA⋯O2Bⁱⁱⁱ, N2B—H2NB⋯O2Aⁱⁱ and N2B—H3NB⋯O3Bⁱⁱ hydrogen bonds (symmetry codes in Table 1), into a three-dimensional network. Furthermore, the crystal structure is stabilized by C7A—H7AA⋯O3Aⁱⁱ, C9A—H9AA⋯O1A^{iv}, C7B—H7BA⋯O3Bⁱⁱ, C8B—H8BA⋯O3B^v and C9B—H9BA⋯O4B^v hydrogen bonds (symmetry codes in Table 1) and π - π stacking interactions between the centroids of C1A—C6A (*Cg*2), N1B/C6B—C9B/C1B (*Cg*4) rings and C1A—C6A, C1B—C6B (*Cg*5) rings, with *Cg*2⋯*Cg*4 and *Cg*2⋯*Cg*5 distances of 3.7283 (15) and 3.8467 (15) Å, respectively.

S2. Experimental

Hot methanol solutions (20 ml) of 5-amino-6-methylquinoline (39 mg, Aldrich) and succinic acid (29 mg, Aldrich) were mixed and warmed over a heating magnetic stirrer hotplate for a few minutes. The resulting solution was allowed to cool slowly at room temperature and crystals of the title compound (I) appeared after a few days.

S3. Refinement

O- and N-bound H atoms were located in a difference Fourier maps. Atoms H10B, H2NA, H3NA, H1NB, H2NB and H3NB were refined freely, while atoms H10A and H1NA were refined with a bond restraint O—H = 0.82 (1) Å and N—H = 0.87 (1) Å [refined distances: O2A—H10A = 0.834 (10) Å, O2B—H10B = 0.92 (4) Å, N1A—H1NA = 0.883 (10) Å, N2A—H2NA = 0.98 (5) Å, N2A—H3NA = 0.93 (4) Å, N1B—H1NB = 0.96 (3) Å, N2B—H2NB = 0.87 (3) Å and N2B—H3NB = 0.88 (3) Å]. The remaining H atoms were positioned geometrically (C—H = 0.95–0.99 Å) and were refined using a riding model, with $U_{\text{iso}}(\text{H}) = 1.2U_{\text{eq}}(\text{C})$ or $1.5U_{\text{eq}}(\text{methyl C})$. A rotating-group model was used for the methyl group. Three outliers were omitted (-4 -7 7, -1 -7 12 and -4 -7 6) in the final refinement.

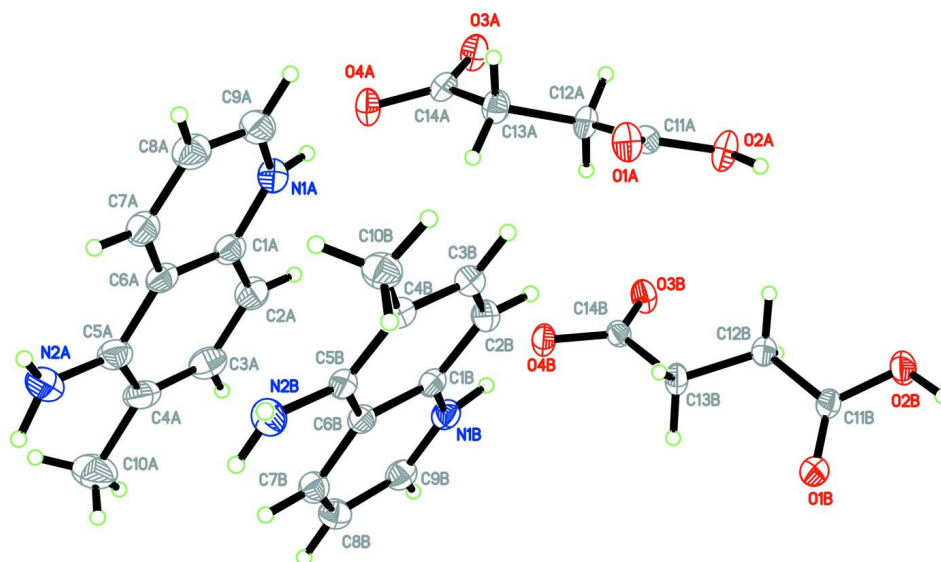


Figure 1

The asymmetric unit of the title compound with atom labels with 50% probability displacement ellipsoids.

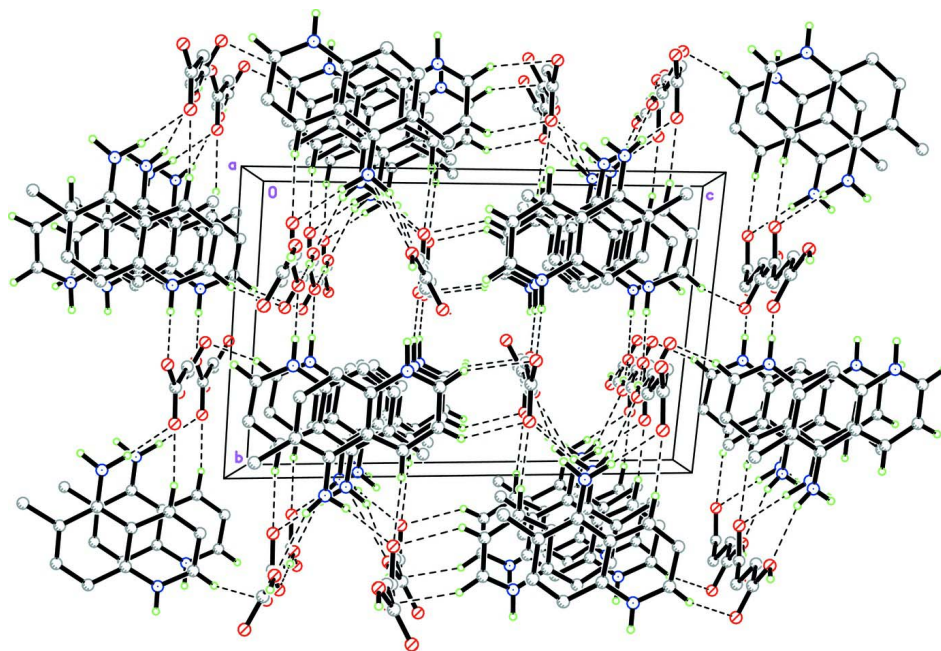


Figure 2

A crystal packing of the title compound, viewed along the *a* axis. H atoms not involved in the intermolecular interactions (dashed lines) have been omitted for clarity.

5-Amino-6-methylquinolin-1-ium 3-carboxypropanoate

Crystal data

$C_{10}H_{11}N_2^+ \cdot C_4H_5O_4^-$

$M_r = 276.29$

Triclinic, $P\bar{1}$

Hall symbol: $-P\ 1$

$a = 8.0784\ (3)\ \text{\AA}$

$b = 10.8234\ (4)\ \text{\AA}$

$c = 16.4366\ (6)\ \text{\AA}$

$\alpha = 91.608\ (2)^\circ$

$\beta = 101.039 (2)^\circ$
 $\gamma = 105.782 (2)^\circ$
 $V = 1352.49 (9) \text{ \AA}^3$
 $Z = 4$
 $F(000) = 584$
 $D_x = 1.357 \text{ Mg m}^{-3}$
 Mo $K\alpha$ radiation, $\lambda = 0.71073 \text{ \AA}$

Cell parameters from 5690 reflections
 $\theta = 2.4\text{--}29.7^\circ$
 $\mu = 0.10 \text{ mm}^{-1}$
 $T = 100 \text{ K}$
 Block, orange
 $0.31 \times 0.17 \times 0.16 \text{ mm}$

Data collection

Bruker SMART APEXII CCD area-detector
 diffractometer
 Radiation source: fine-focus sealed tube
 Graphite monochromator
 φ and ω scans
 Absorption correction: multi-scan
 (SADABS; Bruker, 2009)
 $T_{\min} = 0.970$, $T_{\max} = 0.984$

19941 measured reflections
 6733 independent reflections
 4669 reflections with $I > 2\sigma(I)$
 $R_{\text{int}} = 0.048$
 $\theta_{\max} = 28.5^\circ$, $\theta_{\min} = 1.3^\circ$
 $h = -10 \rightarrow 10$
 $k = -14 \rightarrow 14$
 $l = -21 \rightarrow 22$

Refinement

Refinement on F^2
 Least-squares matrix: full
 $R[F^2 > 2\sigma(F^2)] = 0.066$
 $wR(F^2) = 0.200$
 $S = 1.04$
 6733 reflections
 395 parameters
 2 restraints
 Primary atom site location: structure-invariant
 direct methods

Secondary atom site location: difference Fourier
 map
 Hydrogen site location: inferred from
 neighbouring sites
 H atoms treated by a mixture of independent
 and constrained refinement
 $w = 1/[\sigma^2(F_o^2) + (0.0947P)^2 + 1.0362P]$
 where $P = (F_o^2 + 2F_c^2)/3$
 $(\Delta/\sigma)_{\max} < 0.001$
 $\Delta\rho_{\max} = 0.52 \text{ e \AA}^{-3}$
 $\Delta\rho_{\min} = -0.35 \text{ e \AA}^{-3}$

Special details

Experimental. The crystal was placed in the cold stream of an Oxford Cryosystems Cobra open-flow nitrogen cryostat (Cosier & Glazer, 1986) operating at 100.0 (1) K.

Geometry. All e.s.d.'s (except the e.s.d. in the dihedral angle between two l.s. planes) are estimated using the full covariance matrix. The cell e.s.d.'s are taken into account individually in the estimation of e.s.d.'s in distances, angles and torsion angles; correlations between e.s.d.'s in cell parameters are only used when they are defined by crystal symmetry. An approximate (isotropic) treatment of cell e.s.d.'s is used for estimating e.s.d.'s involving l.s. planes.

Refinement. Refinement of F^2 against ALL reflections. The weighted R -factor wR and goodness of fit S are based on F^2 , conventional R -factors R are based on F , with F set to zero for negative F^2 . The threshold expression of $F^2 > \sigma(F^2)$ is used only for calculating R -factors(gt) etc. and is not relevant to the choice of reflections for refinement. R -factors based on F^2 are statistically about twice as large as those based on F , and R -factors based on ALL data will be even larger.

Fractional atomic coordinates and isotropic or equivalent isotropic displacement parameters (\AA^2)

	x	y	z	$U_{\text{iso}}^*/U_{\text{eq}}$
N1A	0.1452 (3)	0.6288 (2)	0.13378 (13)	0.0263 (4)
N2A	0.1161 (3)	1.0273 (2)	0.25781 (16)	0.0356 (5)
C1A	0.1331 (3)	0.6995 (2)	0.20182 (15)	0.0259 (5)
C2A	0.1184 (3)	0.6413 (3)	0.27674 (16)	0.0299 (6)
H2AA	0.1176	0.5538	0.2815	0.036*
C3A	0.1054 (4)	0.7167 (3)	0.34280 (17)	0.0339 (6)
H3AA	0.0964	0.6792	0.3939	0.041*

C4A	0.1047 (3)	0.8441 (3)	0.33871 (16)	0.0318 (6)
C5A	0.1197 (3)	0.9047 (2)	0.26446 (16)	0.0282 (5)
C6A	0.1369 (3)	0.8304 (2)	0.19393 (15)	0.0248 (5)
C7A	0.1584 (3)	0.8819 (3)	0.11766 (16)	0.0281 (5)
H7AA	0.1630	0.9696	0.1113	0.034*
C8A	0.1728 (4)	0.8061 (3)	0.05216 (16)	0.0325 (6)
H8AA	0.1886	0.8414	0.0010	0.039*
C9A	0.1641 (3)	0.6781 (3)	0.06169 (17)	0.0318 (6)
H9AA	0.1717	0.6249	0.0164	0.038*
C10A	0.0868 (5)	0.9222 (3)	0.41296 (18)	0.0463 (8)
H10A	0.0772	0.8685	0.4598	0.069*
H10B	-0.0189	0.9515	0.3984	0.069*
H10C	0.1905	0.9970	0.4287	0.069*
O1A	0.7074 (2)	0.44158 (16)	0.09215 (11)	0.0275 (4)
O2A	0.7631 (2)	0.26649 (17)	0.14664 (12)	0.0279 (4)
O3A	0.1102 (2)	0.17893 (16)	0.11289 (12)	0.0294 (4)
O4A	0.0728 (2)	0.37301 (16)	0.13103 (12)	0.0273 (4)
C11A	0.6595 (3)	0.3411 (2)	0.12228 (14)	0.0217 (5)
C12A	0.4757 (3)	0.2834 (2)	0.13614 (15)	0.0228 (5)
H12A	0.4818	0.2735	0.1962	0.027*
H12B	0.4278	0.1964	0.1063	0.027*
C13A	0.3505 (3)	0.3625 (2)	0.10726 (16)	0.0253 (5)
H13A	0.3478	0.3762	0.0478	0.030*
H13B	0.3941	0.4480	0.1392	0.030*
C14A	0.1656 (3)	0.2977 (2)	0.11840 (15)	0.0228 (5)
N1B	0.5783 (3)	0.6411 (2)	0.37371 (12)	0.0233 (4)
N2B	0.6094 (3)	1.0271 (2)	0.22984 (14)	0.0264 (5)
C1B	0.6078 (3)	0.7071 (2)	0.30499 (15)	0.0219 (5)
C2B	0.6486 (3)	0.6475 (2)	0.23808 (15)	0.0246 (5)
H2BA	0.6568	0.5616	0.2390	0.029*
C3B	0.6768 (3)	0.7175 (2)	0.17047 (15)	0.0257 (5)
H3BA	0.7049	0.6779	0.1247	0.031*
C4B	0.6658 (3)	0.8439 (2)	0.16653 (15)	0.0228 (5)
C5B	0.6250 (3)	0.9052 (2)	0.23322 (14)	0.0214 (5)
C6B	0.5952 (3)	0.8359 (2)	0.30487 (14)	0.0206 (5)
C7B	0.5578 (3)	0.8897 (2)	0.37612 (15)	0.0237 (5)
H7BA	0.5508	0.9759	0.3778	0.028*
C8B	0.5312 (3)	0.8191 (2)	0.44323 (15)	0.0263 (5)
H8BA	0.5066	0.8561	0.4910	0.032*
C9B	0.5410 (3)	0.6919 (2)	0.43990 (15)	0.0254 (5)
H9BA	0.5209	0.6416	0.4854	0.031*
C10B	0.7013 (4)	0.9169 (2)	0.09179 (16)	0.0299 (6)
H10D	0.7268	0.8611	0.0508	0.045*
H10E	0.8024	0.9931	0.1092	0.045*
H10F	0.5977	0.9438	0.0670	0.045*
O1B	1.2074 (2)	0.44971 (16)	0.43052 (11)	0.0258 (4)
O2B	1.2173 (2)	0.27375 (18)	0.35962 (13)	0.0333 (4)
O3B	0.5817 (2)	0.19433 (15)	0.37244 (11)	0.0264 (4)

O4B	0.5389 (2)	0.38843 (15)	0.37072 (11)	0.0248 (4)
C11B	1.1346 (3)	0.3473 (2)	0.39056 (14)	0.0220 (5)
C12B	0.9375 (3)	0.2871 (2)	0.36983 (16)	0.0255 (5)
H12C	0.9079	0.2113	0.4022	0.031*
H12D	0.9010	0.2562	0.3101	0.031*
C13B	0.8340 (3)	0.3788 (2)	0.38803 (16)	0.0232 (5)
H13C	0.8529	0.4497	0.3511	0.028*
H13D	0.8790	0.4170	0.4462	0.028*
C14B	0.6382 (3)	0.3128 (2)	0.37564 (14)	0.0199 (4)
H10A	0.8673 (18)	0.301 (3)	0.144 (2)	0.041 (9)*
H10B	1.335 (5)	0.317 (3)	0.364 (2)	0.053 (10)*
H1NA	0.125 (4)	0.5444 (11)	0.134 (2)	0.041 (9)*
H2NA	0.136 (6)	1.074 (4)	0.208 (3)	0.082 (14)*
H3NA	0.127 (5)	1.084 (4)	0.303 (2)	0.061 (11)*
H1NB	0.574 (4)	0.551 (3)	0.369 (2)	0.053 (10)*
H2NB	0.660 (4)	1.079 (3)	0.197 (2)	0.036 (8)*
H3NB	0.593 (4)	1.069 (3)	0.272 (2)	0.039 (9)*

Atomic displacement parameters (Å²)

	U^{11}	U^{22}	U^{33}	U^{12}	U^{13}	U^{23}
N1A	0.0259 (11)	0.0269 (11)	0.0281 (11)	0.0100 (9)	0.0065 (9)	0.0043 (9)
N2A	0.0424 (14)	0.0305 (12)	0.0329 (13)	0.0111 (10)	0.0050 (11)	-0.0046 (10)
C1A	0.0206 (12)	0.0312 (13)	0.0244 (12)	0.0068 (10)	0.0019 (9)	0.0008 (10)
C2A	0.0267 (13)	0.0321 (13)	0.0295 (13)	0.0065 (11)	0.0047 (10)	0.0036 (10)
C3A	0.0348 (15)	0.0394 (15)	0.0244 (13)	0.0082 (12)	0.0018 (11)	0.0051 (11)
C4A	0.0261 (13)	0.0426 (15)	0.0227 (12)	0.0062 (11)	0.0014 (10)	-0.0046 (11)
C5A	0.0234 (12)	0.0295 (13)	0.0276 (13)	0.0039 (10)	0.0015 (10)	-0.0025 (10)
C6A	0.0186 (11)	0.0321 (13)	0.0216 (12)	0.0059 (9)	0.0010 (9)	0.0014 (9)
C7A	0.0250 (12)	0.0325 (13)	0.0268 (13)	0.0095 (10)	0.0038 (10)	0.0033 (10)
C8A	0.0317 (14)	0.0441 (15)	0.0229 (12)	0.0119 (12)	0.0069 (10)	0.0043 (11)
C9A	0.0310 (14)	0.0399 (15)	0.0264 (13)	0.0126 (12)	0.0071 (11)	-0.0008 (11)
C10A	0.062 (2)	0.0485 (18)	0.0275 (15)	0.0143 (16)	0.0089 (14)	-0.0036 (13)
O1A	0.0267 (9)	0.0261 (9)	0.0340 (10)	0.0112 (7)	0.0106 (8)	0.0074 (7)
O2A	0.0184 (9)	0.0324 (10)	0.0374 (10)	0.0120 (7)	0.0080 (7)	0.0139 (8)
O3A	0.0216 (9)	0.0238 (9)	0.0424 (11)	0.0076 (7)	0.0035 (8)	0.0056 (7)
O4A	0.0204 (8)	0.0232 (8)	0.0414 (11)	0.0097 (7)	0.0083 (7)	0.0048 (7)
C11A	0.0209 (11)	0.0252 (12)	0.0200 (11)	0.0081 (9)	0.0049 (9)	-0.0003 (9)
C12A	0.0202 (11)	0.0248 (11)	0.0270 (12)	0.0113 (9)	0.0053 (9)	0.0078 (9)
C13A	0.0195 (11)	0.0241 (12)	0.0324 (13)	0.0062 (9)	0.0052 (10)	0.0035 (10)
C14A	0.0181 (11)	0.0256 (12)	0.0235 (11)	0.0068 (9)	0.0003 (9)	0.0035 (9)
N1B	0.0232 (10)	0.0232 (10)	0.0229 (10)	0.0078 (8)	0.0014 (8)	0.0043 (8)
N2B	0.0323 (12)	0.0225 (10)	0.0264 (11)	0.0090 (9)	0.0086 (9)	0.0059 (9)
C1B	0.0187 (11)	0.0223 (11)	0.0232 (12)	0.0071 (9)	-0.0014 (9)	0.0002 (9)
C2B	0.0269 (12)	0.0225 (11)	0.0258 (12)	0.0113 (10)	0.0027 (10)	0.0017 (9)
C3B	0.0261 (12)	0.0282 (12)	0.0235 (12)	0.0118 (10)	0.0016 (10)	-0.0021 (9)
C4B	0.0217 (11)	0.0243 (11)	0.0209 (11)	0.0052 (9)	0.0026 (9)	0.0021 (9)
C5B	0.0202 (11)	0.0208 (11)	0.0227 (11)	0.0079 (9)	0.0001 (9)	0.0003 (9)

C6B	0.0190 (11)	0.0193 (11)	0.0220 (11)	0.0055 (8)	0.0007 (9)	0.0014 (8)
C7B	0.0241 (12)	0.0219 (11)	0.0251 (12)	0.0069 (9)	0.0044 (9)	0.0025 (9)
C8B	0.0284 (13)	0.0277 (12)	0.0227 (12)	0.0075 (10)	0.0058 (10)	0.0005 (9)
C9B	0.0236 (12)	0.0302 (13)	0.0219 (12)	0.0071 (10)	0.0036 (9)	0.0041 (9)
C10B	0.0342 (14)	0.0303 (13)	0.0252 (13)	0.0085 (11)	0.0074 (11)	0.0025 (10)
O1B	0.0215 (8)	0.0259 (9)	0.0287 (9)	0.0072 (7)	0.0021 (7)	-0.0024 (7)
O2B	0.0185 (9)	0.0301 (9)	0.0496 (12)	0.0073 (8)	0.0051 (8)	-0.0128 (8)
O3B	0.0235 (9)	0.0204 (8)	0.0380 (10)	0.0077 (7)	0.0105 (7)	0.0026 (7)
O4B	0.0193 (8)	0.0234 (8)	0.0336 (10)	0.0098 (7)	0.0049 (7)	0.0025 (7)
C11B	0.0212 (11)	0.0254 (11)	0.0218 (11)	0.0119 (9)	0.0022 (9)	0.0028 (9)
C12B	0.0202 (11)	0.0262 (12)	0.0303 (13)	0.0095 (9)	0.0023 (9)	-0.0028 (10)
C13B	0.0191 (11)	0.0220 (11)	0.0315 (13)	0.0100 (9)	0.0061 (9)	0.0033 (9)
C14B	0.0218 (11)	0.0228 (11)	0.0177 (10)	0.0099 (9)	0.0050 (9)	0.0021 (8)

Geometric parameters (Å, °)

N1A—C9A	1.331 (3)	N1B—C9B	1.326 (3)
N1A—C1A	1.371 (3)	N1B—C1B	1.378 (3)
N1A—H1NA	0.883 (10)	N1B—H1NB	0.96 (3)
N2A—C5A	1.342 (3)	N2B—C5B	1.361 (3)
N2A—H2NA	0.98 (5)	N2B—H2NB	0.87 (3)
N2A—H3NA	0.93 (4)	N2B—H3NB	0.88 (3)
C1A—C2A	1.409 (4)	C1B—C2B	1.396 (3)
C1A—C6A	1.419 (3)	C1B—C6B	1.426 (3)
C2A—C3A	1.377 (4)	C2B—C3B	1.382 (3)
C2A—H2AA	0.9500	C2B—H2BA	0.9500
C3A—C4A	1.384 (4)	C3B—C4B	1.398 (3)
C3A—H3AA	0.9500	C3B—H3BA	0.9500
C4A—C5A	1.412 (4)	C4B—C5B	1.402 (3)
C4A—C10A	1.517 (4)	C4B—C10B	1.510 (3)
C5A—C6A	1.442 (3)	C5B—C6B	1.437 (3)
C6A—C7A	1.408 (3)	C6B—C7B	1.412 (3)
C7A—C8A	1.377 (4)	C7B—C8B	1.377 (3)
C7A—H7AA	0.9500	C7B—H7BA	0.9500
C8A—C9A	1.383 (4)	C8B—C9B	1.401 (3)
C8A—H8AA	0.9500	C8B—H8BA	0.9500
C9A—H9AA	0.9500	C9B—H9BA	0.9500
C10A—H10A	0.9800	C10B—H10D	0.9800
C10A—H10B	0.9800	C10B—H10E	0.9800
C10A—H10C	0.9800	C10B—H10F	0.9800
O1A—C11A	1.205 (3)	O1B—C11B	1.209 (3)
O2A—C11A	1.331 (3)	O2B—C11B	1.317 (3)
O2A—H10A	0.834 (10)	O2B—H10B	0.92 (4)
O3A—C14A	1.235 (3)	O3B—C14B	1.235 (3)
O4A—C14A	1.285 (3)	O4B—C14B	1.286 (3)
C11A—C12A	1.510 (3)	C11B—C12B	1.514 (3)
C12A—C13A	1.514 (3)	C12B—C13B	1.518 (3)
C12A—H12A	0.9900	C12B—H12C	0.9900

C12A—H12B	0.9900	C12B—H12D	0.9900
C13A—C14A	1.516 (3)	C13B—C14B	1.519 (3)
C13A—H13A	0.9900	C13B—H13C	0.9900
C13A—H13B	0.9900	C13B—H13D	0.9900
C9A—N1A—C1A	123.1 (2)	C9B—N1B—C1B	123.3 (2)
C9A—N1A—H1NA	116 (2)	C9B—N1B—H1NB	121 (2)
C1A—N1A—H1NA	120 (2)	C1B—N1B—H1NB	116 (2)
C5A—N2A—H2NA	123 (2)	C5B—N2B—H2NB	121 (2)
C5A—N2A—H3NA	123 (2)	C5B—N2B—H3NB	122 (2)
H2NA—N2A—H3NA	111 (3)	H2NB—N2B—H3NB	112 (3)
N1A—C1A—C2A	119.7 (2)	N1B—C1B—C2B	120.0 (2)
N1A—C1A—C6A	118.1 (2)	N1B—C1B—C6B	118.1 (2)
C2A—C1A—C6A	122.2 (2)	C2B—C1B—C6B	121.9 (2)
C3A—C2A—C1A	117.1 (2)	C3B—C2B—C1B	117.9 (2)
C3A—C2A—H2AA	121.5	C3B—C2B—H2BA	121.1
C1A—C2A—H2AA	121.5	C1B—C2B—H2BA	121.1
C2A—C3A—C4A	123.5 (3)	C2B—C3B—C4B	122.9 (2)
C2A—C3A—H3AA	118.2	C2B—C3B—H3BA	118.5
C4A—C3A—H3AA	118.2	C4B—C3B—H3BA	118.5
C3A—C4A—C5A	120.5 (2)	C3B—C4B—C5B	119.9 (2)
C3A—C4A—C10A	121.4 (3)	C3B—C4B—C10B	120.7 (2)
C5A—C4A—C10A	118.1 (3)	C5B—C4B—C10B	119.4 (2)
N2A—C5A—C4A	122.1 (2)	N2B—C5B—C4B	120.9 (2)
N2A—C5A—C6A	119.9 (2)	N2B—C5B—C6B	120.2 (2)
C4A—C5A—C6A	118.1 (2)	C4B—C5B—C6B	118.9 (2)
C7A—C6A—C1A	118.4 (2)	C7B—C6B—C1B	118.1 (2)
C7A—C6A—C5A	123.1 (2)	C7B—C6B—C5B	123.5 (2)
C1A—C6A—C5A	118.6 (2)	C1B—C6B—C5B	118.4 (2)
C8A—C7A—C6A	120.6 (2)	C8B—C7B—C6B	121.0 (2)
C8A—C7A—H7AA	119.7	C8B—C7B—H7BA	119.5
C6A—C7A—H7AA	119.7	C6B—C7B—H7BA	119.5
C7A—C8A—C9A	119.3 (2)	C7B—C8B—C9B	118.9 (2)
C7A—C8A—H8AA	120.4	C7B—C8B—H8BA	120.5
C9A—C8A—H8AA	120.4	C9B—C8B—H8BA	120.5
N1A—C9A—C8A	120.6 (2)	N1B—C9B—C8B	120.5 (2)
N1A—C9A—H9AA	119.7	N1B—C9B—H9BA	119.8
C8A—C9A—H9AA	119.7	C8B—C9B—H9BA	119.8
C4A—C10A—H10A	109.5	C4B—C10B—H10D	109.5
C4A—C10A—H10B	109.5	C4B—C10B—H10E	109.5
H10A—C10A—H10B	109.5	H10D—C10B—H10E	109.5
C4A—C10A—H10C	109.5	C4B—C10B—H10F	109.5
H10A—C10A—H10C	109.5	H10D—C10B—H10F	109.5
H10B—C10A—H10C	109.5	H10E—C10B—H10F	109.5
C11A—O2A—H10A	112 (2)	C11B—O2B—H10B	111 (2)
O1A—C11A—O2A	123.7 (2)	O1B—C11B—O2B	124.1 (2)
O1A—C11A—C12A	124.7 (2)	O1B—C11B—C12B	124.5 (2)
O2A—C11A—C12A	111.64 (19)	O2B—C11B—C12B	111.4 (2)

C11A—C12A—C13A	113.97 (19)	C11B—C12B—C13B	113.5 (2)
C11A—C12A—H12A	108.8	C11B—C12B—H12C	108.9
C13A—C12A—H12A	108.8	C13B—C12B—H12C	108.9
C11A—C12A—H12B	108.8	C11B—C12B—H12D	108.9
C13A—C12A—H12B	108.8	C13B—C12B—H12D	108.9
H12A—C12A—H12B	107.7	H12C—C12B—H12D	107.7
C12A—C13A—C14A	112.12 (19)	C12B—C13B—C14B	112.63 (19)
C12A—C13A—H13A	109.2	C12B—C13B—H13C	109.1
C14A—C13A—H13A	109.2	C14B—C13B—H13C	109.1
C12A—C13A—H13B	109.2	C12B—C13B—H13D	109.1
C14A—C13A—H13B	109.2	C14B—C13B—H13D	109.1
H13A—C13A—H13B	107.9	H13C—C13B—H13D	107.8
O3A—C14A—O4A	123.7 (2)	O3B—C14B—O4B	123.4 (2)
O3A—C14A—C13A	120.2 (2)	O3B—C14B—C13B	121.0 (2)
O4A—C14A—C13A	116.2 (2)	O4B—C14B—C13B	115.60 (19)
C9A—N1A—C1A—C2A	-178.1 (2)	C9B—N1B—C1B—C2B	179.2 (2)
C9A—N1A—C1A—C6A	1.5 (4)	C9B—N1B—C1B—C6B	-0.8 (3)
N1A—C1A—C2A—C3A	-179.5 (2)	N1B—C1B—C2B—C3B	179.9 (2)
C6A—C1A—C2A—C3A	0.9 (4)	C6B—C1B—C2B—C3B	-0.1 (3)
C1A—C2A—C3A—C4A	0.5 (4)	C1B—C2B—C3B—C4B	-0.1 (4)
C2A—C3A—C4A—C5A	-0.7 (4)	C2B—C3B—C4B—C5B	0.1 (4)
C2A—C3A—C4A—C10A	178.9 (3)	C2B—C3B—C4B—C10B	178.8 (2)
C3A—C4A—C5A—N2A	178.7 (3)	C3B—C4B—C5B—N2B	-178.4 (2)
C10A—C4A—C5A—N2A	-0.9 (4)	C10B—C4B—C5B—N2B	2.9 (4)
C3A—C4A—C5A—C6A	-0.5 (4)	C3B—C4B—C5B—C6B	0.1 (3)
C10A—C4A—C5A—C6A	179.9 (2)	C10B—C4B—C5B—C6B	-178.6 (2)
N1A—C1A—C6A—C7A	-1.9 (3)	N1B—C1B—C6B—C7B	1.6 (3)
C2A—C1A—C6A—C7A	177.7 (2)	C2B—C1B—C6B—C7B	-178.4 (2)
N1A—C1A—C6A—C5A	178.4 (2)	N1B—C1B—C6B—C5B	-179.7 (2)
C2A—C1A—C6A—C5A	-2.0 (4)	C2B—C1B—C6B—C5B	0.3 (3)
N2A—C5A—C6A—C7A	2.9 (4)	N2B—C5B—C6B—C7B	-3.2 (4)
C4A—C5A—C6A—C7A	-177.9 (2)	C4B—C5B—C6B—C7B	178.3 (2)
N2A—C5A—C6A—C1A	-177.5 (2)	N2B—C5B—C6B—C1B	178.2 (2)
C4A—C5A—C6A—C1A	1.7 (3)	C4B—C5B—C6B—C1B	-0.3 (3)
C1A—C6A—C7A—C8A	0.9 (4)	C1B—C6B—C7B—C8B	-1.1 (3)
C5A—C6A—C7A—C8A	-179.5 (2)	C5B—C6B—C7B—C8B	-179.7 (2)
C6A—C7A—C8A—C9A	0.7 (4)	C6B—C7B—C8B—C9B	-0.3 (4)
C1A—N1A—C9A—C8A	0.1 (4)	C1B—N1B—C9B—C8B	-0.6 (4)
C7A—C8A—C9A—N1A	-1.2 (4)	C7B—C8B—C9B—N1B	1.1 (4)
O1A—C11A—C12A—C13A	0.9 (3)	O1B—C11B—C12B—C13B	12.1 (3)
O2A—C11A—C12A—C13A	-178.4 (2)	O2B—C11B—C12B—C13B	-168.0 (2)
C11A—C12A—C13A—C14A	177.1 (2)	C11B—C12B—C13B—C14B	-173.8 (2)
C12A—C13A—C14A—O3A	-31.2 (3)	C12B—C13B—C14B—O3B	17.2 (3)
C12A—C13A—C14A—O4A	150.7 (2)	C12B—C13B—C14B—O4B	-164.3 (2)

Hydrogen-bond geometry (\AA , $^\circ$)

$D-H\cdots A$	$D-H$	$H\cdots A$	$D\cdots A$	$D-H\cdots A$
$N1A-H1NA\cdots O4A$	0.88 (1)	1.78 (1)	2.667 (3)	177 (4)
$N1B-H1NB\cdots O4B$	0.97 (3)	1.71 (3)	2.664 (3)	170 (3)
$O2A-H1OA\cdots O4A^i$	0.83 (2)	1.69 (2)	2.520 (2)	176 (3)
$O2B-H1OB\cdots O4B^i$	0.93 (4)	1.60 (4)	2.525 (2)	179 (4)
$N2A-H2NA\cdots O3A^{ii}$	0.99 (5)	1.97 (5)	2.931 (3)	163 (4)
$N2A-H3NA\cdots O2B^{iii}$	0.93 (4)	2.11 (4)	2.937 (3)	149 (3)
$N2B-H2NB\cdots O2A^{ii}$	0.87 (3)	2.22 (3)	3.037 (3)	157 (3)
$N2B-H3NB\cdots O3B^{ii}$	0.87 (3)	2.14 (3)	3.001 (3)	172 (3)
$C7A-H7AA\cdots O3A^{ii}$	0.95	2.42	3.343 (3)	165
$C9A-H9AA\cdots O1A^{iv}$	0.95	2.37	3.271 (3)	158
$C7B-H7BA\cdots O3B^{ii}$	0.95	2.31	3.253 (3)	169
$C8B-H8BA\cdots O3B^v$	0.95	2.51	3.323 (3)	143
$C9B-H9BA\cdots O4B^v$	0.95	2.52	3.388 (3)	153

Symmetry codes: (i) $x+1, y, z$; (ii) $x, y+1, z$; (iii) $x-1, y+1, z$; (iv) $-x+1, -y+1, -z$; (v) $-x+1, -y+1, -z+1$.