

Acta Crystallographica Section E

Structure Reports

Online

ISSN 1600-5368

3-(4-Methoxybenzyl)-1,5-benzothiazepin-4(5H)-one

 R. Selvakumar,^a M. Bakthadoss,^{a,b,‡} S. Vijayakumar^c and S. Murugavel^{d*}

^aDepartment of Organic Chemistry, University of Madras, Maraimalai Campus, Chennai 600 025, India, ^bDepartment of Chemistry, Pondicherry University, Puducherry 605 014, India, ^cDepartment of Physics, Sri Balaji Chokkalingam Engineering College, Arni, Thiruvannamalai 632 317, India, and ^dDepartment of Physics, Thanthai Periyar Government Institute of Technology, Vellore 632 002, India

Correspondence e-mail: smurugavel27@gmail.com

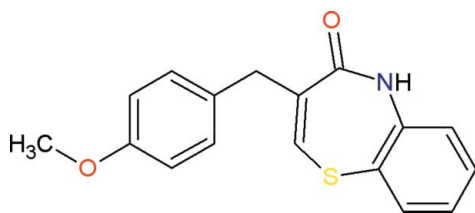
Received 31 March 2013; accepted 4 April 2013

 Key indicators: single-crystal X-ray study; $T = 293$ K; mean $\sigma(\text{C}-\text{C}) = 0.002$ Å; R factor = 0.045; wR factor = 0.134; data-to-parameter ratio = 28.1.

In the title compound, $\text{C}_{17}\text{H}_{15}\text{NO}_2\text{S}$, the thiazepine ring adopts a slightly distorted twist-boat conformation. The dihedral angle between the mean plane of the benzothiazepin ring system and the benzene ring is $65.7(1)^\circ$. In the crystal, pairs of $\text{N}-\text{H}\cdots\text{O}$ hydrogen bonds link inversion-related molecules into dimers, generating $R_2^2(8)$ ring motifs. These dimers are further linked by $\text{C}-\text{H}\cdots\pi$ and $\pi-\pi$ interactions [intercentroid distance between the benzene rings of the benzothiazepine unit = $3.656(3)$ Å] into a three-dimensional supramolecular network.

Related literature

For background to the biology of thiazepin derivatives and for a related structure, see: Bakthadoss *et al.* (2013). For ring-puckering parameters, see: Cremer & Pople (1975).



Experimental

Crystal data

 $\text{C}_{17}\text{H}_{15}\text{NO}_2\text{S}$
 $M_r = 297.36$

Triclinic, $P\bar{1}$
 $a = 7.678(5)$ Å
 $b = 9.612(5)$ Å
 $c = 10.860(5)$ Å
 $\alpha = 77.208(5)^\circ$
 $\beta = 74.117(4)^\circ$
 $\gamma = 81.522(5)^\circ$

$V = 748.5(7)$ Å³
 $Z = 2$
 Mo $K\alpha$ radiation
 $\mu = 0.22$ mm⁻¹
 $T = 293$ K
 $0.23 \times 0.21 \times 0.15$ mm

Data collection

Bruker APEXII CCD diffractometer
 Absorption correction: multi-scan (SADABS; Sheldrick, 1996)
 $T_{\min} = 0.951$, $T_{\max} = 0.968$

18449 measured reflections
 5363 independent reflections
 3676 reflections with $I > 2\sigma(I)$
 $R_{\text{int}} = 0.027$

Refinement

$R[F^2 > 2\sigma(F^2)] = 0.045$
 $wR(F^2) = 0.134$
 $S = 1.05$
 5363 reflections

191 parameters
 H-atom parameters constrained
 $\Delta\rho_{\text{max}} = 0.28$ e Å⁻³
 $\Delta\rho_{\text{min}} = -0.33$ e Å⁻³

Table 1

Hydrogen-bond geometry (Å, °).

 C_g is the centroid of the C3–C7 benzene ring.

$D-H\cdots A$	$D-H$	$H\cdots A$	$D\cdots A$	$D-H\cdots A$
$\text{N1}-\text{H1A}\cdots\text{O1}^i$	0.86	2.02	2.860 (2)	167
$\text{C17}-\text{H17B}\cdots\text{Cg}^{ii}$	0.96	2.96	3.561 (3)	122

 Symmetry codes: (i) $-x, -y + 1, -z$; (ii) $x + 1, y + 1, z$.

Data collection: APEX2 (Bruker, 2004); cell refinement: APEX2 and SAINT (Bruker, 2004); data reduction: SAINT and XPREP (Bruker, 2004); program(s) used to solve structure: SHELXS97 (Sheldrick, 2008); program(s) used to refine structure: SHELXL97 (Sheldrick, 2008); molecular graphics: ORTEP-3 for Windows (Farrugia, 2012); software used to prepare material for publication: SHELXL97 and PLATON (Spek, 2009).

The authors thank Dr Babu Vargheese, SAIF, IIT, Madras, India, for his help with the data collection.

Supplementary data and figures for this paper are available from the IUCr electronic archives (Reference: SJ5315).

References

- Bakthadoss, M., Selvakumar, R., Manikandan, N. & Murugavel, S. (2013). *Acta Cryst.* **E69**, o562–o563.
 Bruker (2004). APEX2, SAINT and XPREP. Bruker AXS Inc., Madison, Wisconsin, U. S. A.
 Cremer, D. & Pople, J. A. (1975). *J. Am. Chem. Soc.* **97**, 1354–1358.
 Farrugia, L. J. (2012). *J. Appl. Cryst.* **45**, 849–854.
 Sheldrick, G. M. (1996). SADABS. University of Göttingen, Germany.
 Sheldrick, G. M. (2008). *Acta Cryst.* **A64**, 112–122.
 Spek, A. L. (2009). *Acta Cryst.* **D65**, 148–155.

[‡] Additional correspondence author, e-mail: bhakthadoss@yahoo.com.

supporting information

Acta Cryst. (2013). E69, o693 [https://doi.org/10.1107/S1600536813009215]

3-(4-Methoxybenzyl)-1,5-benzothiazepin-4(5*H*)-one**R. Selvakumar, M. Bakthadoss, S. Vijayakumar and S. Murugavel****S1. Comment**

The background to the biology of thiazepin derivatives and a related structure have been described recently (Bakthadoss *et al.*, 2013). In view of this biological importance, the crystal structure of the title compound has been carried out and the results are presented here.

Fig. 1. shows a displacement ellipsoid plot of (I), with the atom numbering scheme. The seven membered thiazepine ring (N1/S1/C1/C2/C7/C8/C9) adopts slightly distorted twist-boat conformation as indicated by puckering parameters (Cremer & Pople, 1975) $QT = 0.9884$ (11) Å, $\varphi_2 = 357.9$ (1)° and $\varphi_3 = 355.6$ (3)°. The dihedral angle between the benzothiazepin ring system and the benzene ring is 65.7 (1) (1)°. The atom O1 deviates by -0.458 (1) Å from the least-squares plane of the thiazepin ring. The sum of angles at N1 atom of the thiazepin ring (359.9°) is in accordance with sp^2 hybridization. The geometric parameters of the title molecule agree well with those reported for a similar structure (Bakthadoss *et al.*, 2013).

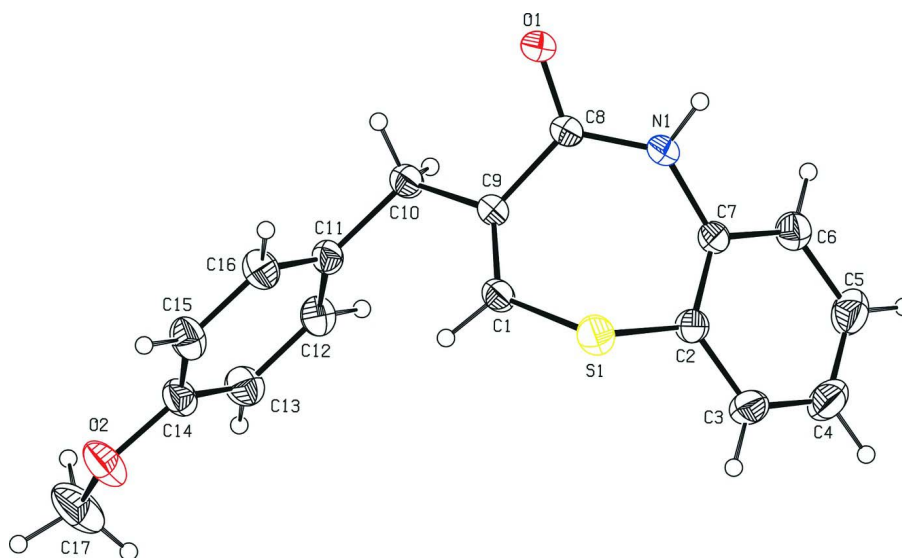
In the crystal, molecules are linked by N1—H1A...O1 hydrogen bonds into cyclic centrosymmetric $R_2^2(8)$ dimers (Fig. 2 and Table 1). These dimers are further linked by C17—H17B...Cgⁱⁱ (Table 1; Symmetry code:(ii) = $I + x, I + y, z$) hydrogen bonds and π — π interactions between benzothiazepine benzene rings with $Cg \cdots Cg^{iii} = 3.656$ (3) Å (Symmetry code:(iii) = $-x, I - y, I - z$) forming a three-dimensional supramolecular network (Fig. 3; Cg is the centroid of the C2–C7 benzene ring).

S2. Experimental

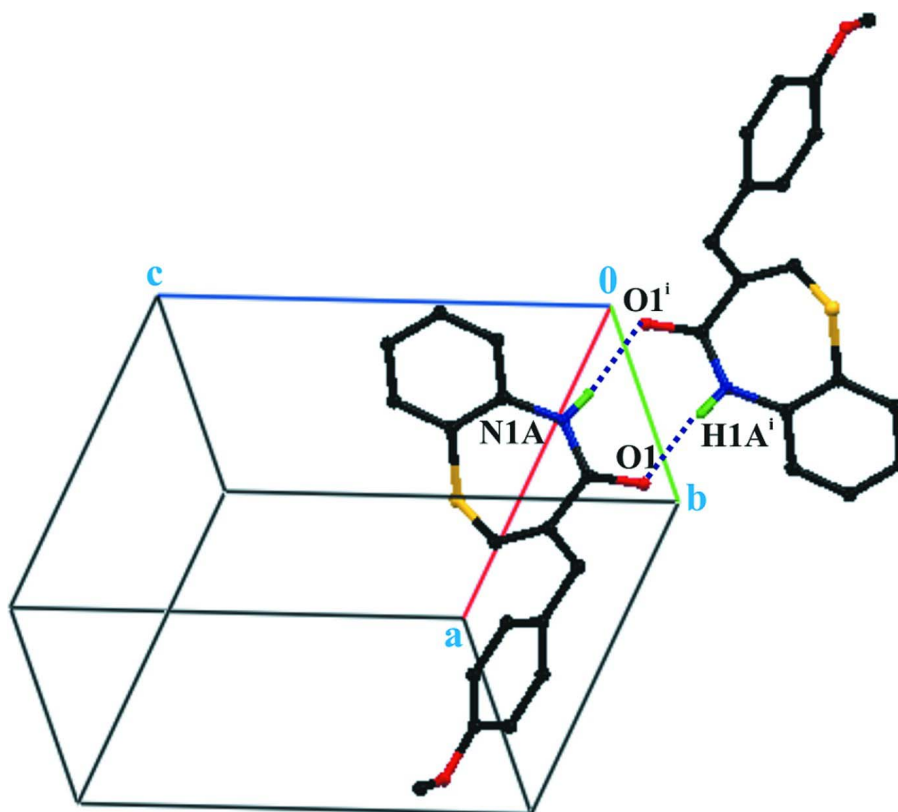
A mixture of (*Z*)-methyl 2-(bromomethyl)-3-(4-methoxyphenyl)acrylate (2 mmol) and *o*-aminothiophenol (2 mmol) in the presence of potassium *tert*-butoxide (4.8 mmol) in dry THF (10 ml) was stirred at room temperature for 1 h. After the completion of the reaction as indicated by TLC, the reaction mixture was concentrated and the resulting crude mass was diluted with water (20 ml) and extracted with ethyl acetate (3 x 20 ml). The organic layer was washed with brine (2 x 20 ml) and dried over anhydrous sodium sulfate. It was then concentrated to successfully provide the crude final product ((*Z*)-3-(4-methoxybenzyl)benzo[*b*][1,4]thiazepin-4(5*H*)-one). This was purified by column chromatography on silica gel with ethylacetate/hexane 1:19 as eluent to afford the title compound in good yield (45%). Single crystals suitable for X-ray diffraction were obtained by slow evaporation of an ethylacetate solution at room temperature.

S3. Refinement

All the H atoms were positioned geometrically and constrained to ride on their parent atom with C—H = 0.93–0.97 Å and N—H = 0.86 Å, and with $U_{\text{iso}}(\text{H}) = 1.5U_{\text{eq}}(\text{C})$ for methyl H atoms and $1.2U_{\text{eq}}(\text{C})$ for other H atoms.

**Figure 1**

Molecular structure of the title compound showing displacement ellipsoids at the 30% probability level. H atoms are presented as a small spheres of arbitrary radii.

**Figure 2**

Part of the crystal structure of the title compound showing N—H...O intermolecular hydrogen bonds (dotted lines) generating an $R^2_2(8)$ centrosymmetric dimer. [Symmetry code: (i) $-x, 1-y, -z$]. Hydrogen atoms not included in hydrogen bonding are omitted for clarity.

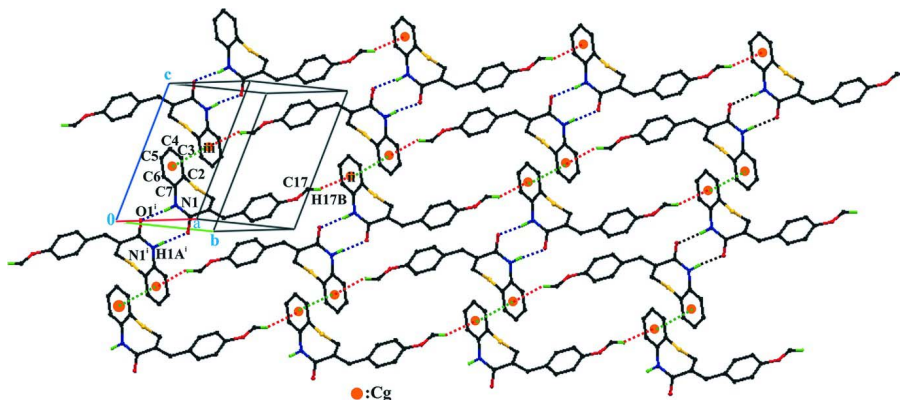


Figure 3

View of three-dimensional supramolecular network. The N—H \cdots O, C—H \cdots π and π — π interactions are shown as blue, red and green dashed lines, respectively. Cg is the centroid of the (C2 \cdots C7) benzene ring. [Symmetry code: (i) $-x, 1-y, -z$; (ii) $1+x, 1+y, z$; (iii) $-x, 1-y, 1-z$]. Hydrogen atoms not included in hydrogen bonding are omitted for clarity.

3-(4-Methoxybenzyl)-1,5-benzothiazepin-4(5H)-one

Crystal data

C₁₇H₁₅NO₂S

$M_r = 297.36$

Triclinic, $P\bar{1}$

Hall symbol: $-P\ 1$

$a = 7.678\ (5)\ \text{\AA}$

$b = 9.612\ (5)\ \text{\AA}$

$c = 10.860\ (5)\ \text{\AA}$

$\alpha = 77.208\ (5)^\circ$

$\beta = 74.117\ (4)^\circ$

$\gamma = 81.522\ (5)^\circ$

$V = 748.5\ (7)\ \text{\AA}^3$

$Z = 2$

$F(000) = 312$

$D_x = 1.319\ \text{Mg m}^{-3}$

Mo $K\alpha$ radiation, $\lambda = 0.71073\ \text{\AA}$

Cell parameters from 5471 reflections

$\theta = 2.0\text{--}32.6^\circ$

$\mu = 0.22\ \text{mm}^{-1}$

$T = 293\ \text{K}$

Block, colourless

$0.23 \times 0.21 \times 0.15\ \text{mm}$

Data collection

Bruker APEXII CCD
diffractometer

Radiation source: fine-focus sealed tube

Graphite monochromator

Detector resolution: $10.0\ \text{pixels mm}^{-1}$

ω scans

Absorption correction: multi-scan
(SADABS; Sheldrick, 1996)

$T_{\min} = 0.951, T_{\max} = 0.968$

18449 measured reflections

5363 independent reflections

3676 reflections with $I > 2\sigma(I)$

$R_{\text{int}} = 0.027$

$\theta_{\max} = 32.6^\circ, \theta_{\min} = 2.0^\circ$

$h = -11 \rightarrow 11$

$k = -14 \rightarrow 14$

$l = -15 \rightarrow 16$

Refinement

Refinement on F^2

Least-squares matrix: full

$R[F^2 > 2\sigma(F^2)] = 0.045$

$wR(F^2) = 0.134$

$S = 1.05$

5363 reflections

191 parameters

0 restraints

Primary atom site location: structure-invariant
direct methods

Secondary atom site location: difference Fourier
map

Hydrogen site location: inferred from
neighbouring sites

H-atom parameters constrained

$$w = 1/[\sigma^2(F_o^2) + (0.0608P)^2 + 0.1157P]$$

where $P = (F_o^2 + 2F_c^2)/3$
 $(\Delta/\sigma)_{\max} = 0.002$

$$\Delta\rho_{\max} = 0.28 \text{ e } \text{\AA}^{-3}$$

$$\Delta\rho_{\min} = -0.33 \text{ e } \text{\AA}^{-3}$$

Special details

Geometry. All e.s.d.'s (except the e.s.d. in the dihedral angle between two l.s. planes) are estimated using the full covariance matrix. The cell e.s.d.'s are taken into account individually in the estimation of e.s.d.'s in distances, angles and torsion angles; correlations between e.s.d.'s in cell parameters are only used when they are defined by crystal symmetry. An approximate (isotropic) treatment of cell e.s.d.'s is used for estimating e.s.d.'s involving l.s. planes.

Refinement. Refinement of F^2 against ALL reflections. The weighted R -factor wR and goodness of fit S are based on F^2 , conventional R -factors R are based on F , with F set to zero for negative F^2 . The threshold expression of $F^2 > \sigma(F^2)$ is used only for calculating R -factors(gt) *etc.* and is not relevant to the choice of reflections for refinement. R -factors based on F^2 are statistically about twice as large as those based on F , and R -factors based on ALL data will be even larger.

Fractional atomic coordinates and isotropic or equivalent isotropic displacement parameters (\AA^2)

	x	y	z	$U_{\text{iso}}^*/U_{\text{eq}}$
C1	0.42839 (17)	0.53284 (13)	0.19547 (13)	0.0389 (3)
H1	0.5174	0.5738	0.2152	0.047*
C2	0.18042 (19)	0.35576 (13)	0.34697 (13)	0.0404 (3)
C3	0.1350 (2)	0.29642 (16)	0.47950 (15)	0.0552 (4)
H3	0.2268	0.2590	0.5217	0.066*
C4	-0.0434 (3)	0.29249 (19)	0.54865 (16)	0.0639 (5)
H4	-0.0720	0.2511	0.6368	0.077*
C5	-0.1794 (2)	0.34965 (18)	0.48779 (16)	0.0595 (4)
H5	-0.3004	0.3466	0.5347	0.071*
C6	-0.1378 (2)	0.41157 (16)	0.35764 (14)	0.0475 (3)
H6	-0.2307	0.4514	0.3172	0.057*
C7	0.04227 (17)	0.41513 (13)	0.28606 (12)	0.0366 (3)
C8	0.19209 (16)	0.56421 (13)	0.07296 (12)	0.0344 (2)
C9	0.32623 (15)	0.61867 (13)	0.12345 (11)	0.0336 (2)
C10	0.34837 (18)	0.77722 (14)	0.07485 (14)	0.0415 (3)
H10A	0.3754	0.7968	-0.0196	0.050*
H10B	0.2336	0.8310	0.1066	0.050*
C11	0.49498 (17)	0.83050 (13)	0.11561 (13)	0.0377 (3)
C12	0.45462 (19)	0.90507 (15)	0.21596 (14)	0.0452 (3)
H12	0.3338	0.9228	0.2601	0.054*
C13	0.5907 (2)	0.95475 (16)	0.25307 (15)	0.0504 (3)
H13	0.5607	1.0052	0.3210	0.060*
C14	0.76966 (19)	0.92861 (14)	0.18852 (15)	0.0456 (3)
C15	0.81273 (19)	0.85446 (15)	0.08668 (16)	0.0497 (3)
H15	0.9335	0.8372	0.0423	0.060*
C16	0.67642 (19)	0.80638 (15)	0.05125 (15)	0.0462 (3)
H16	0.7066	0.7567	-0.0172	0.055*
C17	0.8784 (3)	1.0769 (2)	0.2951 (3)	0.0859 (7)
H17A	0.8026	1.1564	0.2609	0.129*
H17B	0.9907	1.1094	0.2953	0.129*
H17C	0.8171	1.0362	0.3825	0.129*
N1	0.07583 (14)	0.47009 (12)	0.15072 (10)	0.0391 (2)

H1A	0.0114	0.4382	0.1114	0.047*
O1	0.18656 (13)	0.60841 (11)	-0.04169 (9)	0.0456 (2)
O2	0.91500 (16)	0.97189 (13)	0.21607 (13)	0.0668 (3)
S1	0.41037 (5)	0.34901 (4)	0.25677 (4)	0.05008 (12)

Atomic displacement parameters (Å²)

	U^{11}	U^{22}	U^{33}	U^{12}	U^{13}	U^{23}
C1	0.0361 (6)	0.0382 (6)	0.0460 (7)	-0.0061 (5)	-0.0172 (5)	-0.0053 (5)
C2	0.0500 (7)	0.0328 (6)	0.0419 (7)	-0.0089 (5)	-0.0177 (6)	-0.0033 (5)
C3	0.0772 (11)	0.0465 (8)	0.0470 (8)	-0.0166 (7)	-0.0288 (8)	0.0044 (6)
C4	0.0900 (13)	0.0610 (9)	0.0383 (8)	-0.0249 (9)	-0.0106 (8)	0.0002 (7)
C5	0.0627 (10)	0.0624 (9)	0.0476 (9)	-0.0190 (8)	0.0023 (7)	-0.0097 (7)
C6	0.0440 (7)	0.0525 (8)	0.0460 (8)	-0.0094 (6)	-0.0091 (6)	-0.0090 (6)
C7	0.0424 (6)	0.0363 (6)	0.0346 (6)	-0.0104 (5)	-0.0117 (5)	-0.0070 (5)
C8	0.0328 (6)	0.0381 (6)	0.0352 (6)	-0.0030 (4)	-0.0122 (5)	-0.0083 (5)
C9	0.0315 (5)	0.0364 (5)	0.0351 (6)	-0.0053 (4)	-0.0111 (5)	-0.0064 (4)
C10	0.0415 (7)	0.0381 (6)	0.0480 (7)	-0.0074 (5)	-0.0196 (6)	-0.0017 (5)
C11	0.0377 (6)	0.0320 (5)	0.0441 (7)	-0.0069 (5)	-0.0140 (5)	-0.0018 (5)
C12	0.0401 (7)	0.0446 (7)	0.0500 (8)	-0.0056 (5)	-0.0076 (6)	-0.0108 (6)
C13	0.0590 (9)	0.0453 (7)	0.0532 (8)	-0.0077 (6)	-0.0170 (7)	-0.0168 (6)
C14	0.0458 (7)	0.0337 (6)	0.0629 (9)	-0.0073 (5)	-0.0253 (6)	-0.0037 (6)
C15	0.0358 (7)	0.0471 (7)	0.0667 (10)	-0.0037 (5)	-0.0121 (6)	-0.0132 (7)
C16	0.0424 (7)	0.0462 (7)	0.0535 (8)	-0.0048 (5)	-0.0114 (6)	-0.0169 (6)
C17	0.0936 (15)	0.0580 (10)	0.138 (2)	-0.0058 (10)	-0.0690 (14)	-0.0361 (12)
N1	0.0399 (5)	0.0479 (6)	0.0349 (5)	-0.0135 (5)	-0.0146 (4)	-0.0064 (4)
O1	0.0453 (5)	0.0596 (6)	0.0358 (5)	-0.0154 (4)	-0.0168 (4)	-0.0019 (4)
O2	0.0591 (7)	0.0568 (6)	0.1027 (10)	-0.0091 (5)	-0.0422 (7)	-0.0231 (6)
S1	0.0448 (2)	0.03683 (18)	0.0684 (3)	0.00032 (13)	-0.02330 (17)	-0.00078 (15)

Geometric parameters (Å, °)

C1—C9	1.3292 (18)	C10—C11	1.5061 (18)
C1—S1	1.7565 (15)	C10—H10A	0.9700
C1—H1	0.9300	C10—H10B	0.9700
C2—C7	1.3881 (19)	C11—C12	1.3758 (19)
C2—C3	1.392 (2)	C11—C16	1.388 (2)
C2—S1	1.7688 (17)	C12—C13	1.395 (2)
C3—C4	1.372 (3)	C12—H12	0.9300
C3—H3	0.9300	C13—C14	1.375 (2)
C4—C5	1.370 (3)	C13—H13	0.9300
C4—H4	0.9300	C14—O2	1.3721 (17)
C5—C6	1.375 (2)	C14—C15	1.386 (2)
C5—H5	0.9300	C15—C16	1.378 (2)
C6—C7	1.389 (2)	C15—H15	0.9300
C6—H6	0.9300	C16—H16	0.9300
C7—N1	1.4124 (17)	C17—O2	1.415 (2)
C8—O1	1.2337 (16)	C17—H17A	0.9600

C8—N1	1.3474 (16)	C17—H17B	0.9600
C8—C9	1.4935 (16)	C17—H17C	0.9600
C9—C10	1.5170 (18)	N1—H1A	0.8600
C9—C1—S1	125.87 (10)	C9—C10—H10B	108.6
C9—C1—H1	117.1	H10A—C10—H10B	107.6
S1—C1—H1	117.1	C12—C11—C16	117.91 (12)
C7—C2—C3	119.01 (14)	C12—C11—C10	121.68 (12)
C7—C2—S1	120.68 (11)	C16—C11—C10	120.41 (12)
C3—C2—S1	120.27 (12)	C11—C12—C13	121.51 (13)
C4—C3—C2	120.83 (15)	C11—C12—H12	119.2
C4—C3—H3	119.6	C13—C12—H12	119.2
C2—C3—H3	119.6	C14—C13—C12	119.54 (13)
C5—C4—C3	119.96 (15)	C14—C13—H13	120.2
C5—C4—H4	120.0	C12—C13—H13	120.2
C3—C4—H4	120.0	O2—C14—C13	124.88 (14)
C4—C5—C6	120.22 (16)	O2—C14—C15	115.39 (13)
C4—C5—H5	119.9	C13—C14—C15	119.73 (12)
C6—C5—H5	119.9	C16—C15—C14	119.91 (13)
C5—C6—C7	120.46 (15)	C16—C15—H15	120.0
C5—C6—H6	119.8	C14—C15—H15	120.0
C7—C6—H6	119.8	C15—C16—C11	121.40 (13)
C2—C7—C6	119.49 (13)	C15—C16—H16	119.3
C2—C7—N1	122.61 (12)	C11—C16—H16	119.3
C6—C7—N1	117.72 (12)	O2—C17—H17A	109.5
O1—C8—N1	119.75 (10)	O2—C17—H17B	109.5
O1—C8—C9	118.99 (11)	H17A—C17—H17B	109.5
N1—C8—C9	121.26 (11)	O2—C17—H17C	109.5
C1—C9—C8	122.57 (11)	H17A—C17—H17C	109.5
C1—C9—C10	122.99 (11)	H17B—C17—H17C	109.5
C8—C9—C10	114.20 (10)	C8—N1—C7	130.70 (10)
C11—C10—C9	114.61 (10)	C8—N1—H1A	114.6
C11—C10—H10A	108.6	C7—N1—H1A	114.6
C9—C10—H10A	108.6	C14—O2—C17	117.51 (14)
C11—C10—H10B	108.6	C1—S1—C2	99.41 (6)
C7—C2—C3—C4	1.9 (2)	C9—C10—C11—C16	78.58 (16)
S1—C2—C3—C4	-175.66 (12)	C16—C11—C12—C13	-0.3 (2)
C2—C3—C4—C5	-1.1 (2)	C10—C11—C12—C13	-179.73 (13)
C3—C4—C5—C6	-0.3 (3)	C11—C12—C13—C14	-0.2 (2)
C4—C5—C6—C7	0.9 (2)	C12—C13—C14—O2	180.00 (14)
C3—C2—C7—C6	-1.28 (18)	C12—C13—C14—C15	0.6 (2)
S1—C2—C7—C6	176.27 (10)	O2—C14—C15—C16	-179.96 (13)
C3—C2—C7—N1	-176.30 (11)	C13—C14—C15—C16	-0.5 (2)
S1—C2—C7—N1	1.25 (16)	C14—C15—C16—C11	0.0 (2)
C5—C6—C7—C2	-0.1 (2)	C12—C11—C16—C15	0.4 (2)
C5—C6—C7—N1	175.17 (12)	C10—C11—C16—C15	179.84 (13)
S1—C1—C9—C8	-6.64 (19)	O1—C8—N1—C7	-172.86 (12)

S1—C1—C9—C10	179.39 (10)	C9—C8—N1—C7	6.0 (2)
O1—C8—C9—C1	-134.74 (14)	C2—C7—N1—C8	-51.01 (19)
N1—C8—C9—C1	46.39 (18)	C6—C7—N1—C8	133.88 (14)
O1—C8—C9—C10	39.71 (16)	C13—C14—O2—C17	-14.9 (2)
N1—C8—C9—C10	-139.16 (12)	C15—C14—O2—C17	164.55 (16)
C1—C9—C10—C11	-0.45 (19)	C9—C1—S1—C2	-57.47 (14)
C8—C9—C10—C11	-174.88 (11)	C7—C2—S1—C1	58.98 (11)
C9—C10—C11—C12	-102.00 (15)	C3—C2—S1—C1	-123.50 (11)

Hydrogen-bond geometry (Å, °)

Cg is the centroid of the C3–C7 benzene ring.

<i>D</i> —H... <i>A</i>	<i>D</i> —H	H... <i>A</i>	<i>D</i> ... <i>A</i>	<i>D</i> —H... <i>A</i>
N1—H1 <i>A</i> ...O1 ⁱ	0.86	2.02	2.860 (2)	167
C17—H17 <i>B</i> ...Cg ⁱⁱ	0.96	2.96	3.561 (3)	122

Symmetry codes: (i) $-x, -y+1, -z$; (ii) $x+1, y+1, z$.