

**(E)-Methyl 3-(10-bromoanthracen-9-yl)-acrylate**Bernhard Bugenhagen,<sup>a</sup> Yosef Al Jasem,<sup>b</sup> Bassam al Hindawi,<sup>c</sup> Nathir Al Rawashdeh<sup>c</sup> and Thies Thiemann<sup>c\*</sup><sup>a</sup>Institute of Inorganic Chemistry, University of Hamburg, Hamburg, Germany,<sup>b</sup>Department of Chemical Engineering, United Arab Emirates University, AL Ain, Abu Dhabi, United Arab Emirates, and <sup>c</sup>Department of Chemistry, United Arab Emirates University, AL Ain, Abu Dhabi, United Arab Emirates

Correspondence e-mail: thies@uaeu.ac.ae

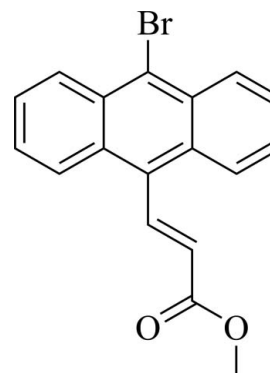
Received 13 May 2013; accepted 18 June 2013

Key indicators: single-crystal X-ray study;  $T = 100$  K; mean  $\sigma(\text{C}-\text{C}) = 0.002$  Å;  $R$  factor = 0.026;  $wR$  factor = 0.066; data-to-parameter ratio = 15.5.

In the title molecule,  $\text{C}_{18}\text{H}_{13}\text{BrO}_2$ , the anthracene unit forms an angle of  $46.91(2)^\circ$  with the mean plane of the methyl acrylate moiety. In the crystal, the molecules arrange themselves into strands parallel to [010] and, due to the crystal symmetry, there are eight strands crossing the unit cell. In each strand, molecules form short  $\text{C}-\text{H}\cdots\text{O}$  and  $\text{C}-\text{H}\cdots\pi$  contacts and have their anthracene groups parallel to each other. Neighboring strands, related by a  $c$ -glide operation, are connected *via*  $\text{C}-\text{H}\cdots\text{O}$  interactions and form a layer parallel to (100). The arrangement of the acrylate and anthracene groups in the crystal do not allow for [2 + 2] or [4 + 4] cycloaddition.

**Related literature**

For an analogous preparation of the title compound, see: Bugenhagen *et al.* (2013); Nguyen & Weizman (2007). For crystal structures of photodimerizable aryl-enes, see: Vishnumurthy *et al.* (2002); Mascitti & Corey (2006); Sonoda (2011); Schmidt (1964). For the photodimerization of anthracenes in the crystal, see: Schmidt (1971); Ihmels *et al.* (2000). For the X-ray crystal structure of a non-planar bromoanthracene, see: Barkhuizen *et al.* (2004).

**Experimental***Crystal data*

$\text{C}_{18}\text{H}_{13}\text{BrO}_2$   
 $M_r = 341.19$   
 Orthorhombic,  $Pbcn$   
 $a = 40.5848(4)$  Å  
 $b = 5.32093(5)$  Å  
 $c = 13.0710(1)$  Å

$V = 2822.67(5)$  Å<sup>3</sup>  
 $Z = 8$   
 Cu  $K\alpha$  radiation  
 $\mu = 3.98$  mm<sup>-1</sup>  
 $T = 100$  K  
 $0.21 \times 0.19 \times 0.13$  mm

*Data collection*

Oxford Diffraction SuperNova,  
 Dual, Cu at zero, Atlas  
 diffractometer  
 Absorption correction: analytical  
 (*CrysAlis PRO*; Agilent, 2013)  
 $T_{\min} = 0.891$ ,  $T_{\max} = 0.924$

25313 measured reflections  
 2961 independent reflections  
 2900 reflections with  $I > 2\sigma(I)$   
 $R_{\text{int}} = 0.022$

*Refinement*

$R[F^2 > 2\sigma(F^2)] = 0.026$   
 $wR(F^2) = 0.066$   
 $S = 1.12$   
 2961 reflections

191 parameters  
 H-atom parameters constrained  
 $\Delta\rho_{\max} = 0.31$  e Å<sup>-3</sup>  
 $\Delta\rho_{\min} = -0.44$  e Å<sup>-3</sup>

**Table 1**

Hydrogen-bond geometry (Å, °).

Cg1 is the centroid of the C2–C7 ring.

| $D-\text{H}\cdots A$                               | $D-\text{H}$ | $\text{H}\cdots A$ | $D\cdots A$ | $D-\text{H}\cdots A$ |
|--|--------------|--------------------|-------------|----------------------|
| $\text{C}15-\text{H}15\cdots\text{Cg}1^{\text{i}}$ | 0.93         | 2.91 (2)           | 3.5055 (19) | 123                  |
| $\text{C}16-\text{H}16\cdots\text{O}2^{\text{ii}}$ | 0.93         | 2.40               | 3.315 (3)   | 170                  |
| $\text{C}5-\text{H}5\cdots\text{O}2^{\text{iii}}$  | 0.93         | 2.53               | 3.372 (2)   | 150                  |

Symmetry codes: (i)  $x, y - 1, z$ ; (ii)  $x, y + 1, z$ ; (iii)  $x, -y + 1, z + \frac{1}{2}$ .

Data collection: *CrysAlis PRO* (Agilent, 2013); cell refinement: *CrysAlis PRO*; data reduction: *CrysAlis PRO*; program(s) used to solve structure: *SHELXS97* (Sheldrick, 2008); program(s) used to refine structure: *SHELXL97* (Sheldrick, 2008) within *OLEX2* (Dolomanov *et al.*, 2009); molecular graphics: *PLATON* (Spek, 2009) and *Mercury* (Macrae *et al.*, 2008); software used to prepare material for publication: *SHELXL97* and *PLATON*.

The authors thank UAEU interdisciplinary grant 31S036 for financial support.

Supplementary data and figures for this paper are available from the IUCr electronic archives (Reference: GK2574).

## References

- Agilent (2013). *CrysAlis PRO*. Agilent Technologies, Yarnton, England.
- Barkhuizen, D. A., Howie, R. A., Maguire, G. E. M. & Rademeyer, M. (2004). *Acta Cryst.* **E60**, o571–o573.
- Bugenhagen, B., Al Jasem, Y., Hindawi, B. al, Al Rawashdeh, N. & Thiemann, T. (2013). *Acta Cryst.* **E69**, o130–o131.
- Dolomanov, O. V., Bourhis, L. J., Gildea, R. J., Howard, J. A. K. & Puschmann, H. (2009). *J. Appl. Cryst.* **42**, 339–341.
- Ihmels, H., Leusser, D., Pfeiffer, M. & Stalke, D. (2000). *Tetrahedron*, **56**, 6867–6875.
- Macrae, C. F., Bruno, I. J., Chisholm, J. A., Edgington, P. R., McCabe, P., Pidcock, E., Rodriguez-Monge, L., Taylor, R., van de Streek, J. & Wood, P. A. (2008). *J. Appl. Cryst.* **41**, 466–470.
- Mascitti, V. & Corey, E. J. (2006). *Tetrahedron Lett.* **47**, 5879–5882.
- Nguyen, K. & Weizman, H. (2007). *J. Chem. Educ.* **84**, 119–121.
- Schmidt, G. M. J. (1964). *J. Chem. Soc.* pp. 2014–2021.
- Schmidt, G. M. J. (1971). *J. Pure Appl. Chem.* **27**, 647–678.
- Sheldrick, G. M. (2008). *Acta Cryst.* **A64**, 112–122.
- Sonoda, Y. (2011). *Molecules*, **16**, 119–148.
- Spek, A. L. (2009). *Acta Cryst.* **D65**, 148–155.
- Vishnumurthy, K., Guru Row, T. N. & Venkatesan, K. (2002). *Photochem. Photobiol. Sci.* **1**, 427–430.

## supporting information

*Acta Cryst.* (2013). E69, o1138–o1139 [https://doi.org/10.1107/S1600536813016905]

**(E)-Methyl 3-(10-bromoanthracen-9-yl)acrylate**

**Bernhard Bugenhagen, Yosef Al Jaseem, Bassam al Hindawi, Nathir Al Rawashdeh and Thies Thiemann**

**S1. Comment**

In our interest in [2 + 2]-photocycloaddition of anthracene derivatives in the crystal (Sonoda, 2011; Schmidt, 1964), the authors grew single crystals of the title compound. The bromo atom (C2—Br1—C14 plane) deviates from the averaged plane of the anthracenyl unit (C1—C14) at an angle of 3.66 (2)°. This unusual deviation (Barkhuizen *et al.*, 2004) may be due to the forced closeness of Br1 to the  $\pi$  system (C9—C14) of the underlying anthracenyl unit. Eight strands of molecules of the title compound cross the unit cell and propagate along [010] (Figure 3). The neighboring strands that are related by c-glide operation are connected *via* C5—H5 $\cdots$ O2 interaction (Table 1) and form a layer parallel to (100). The close contacts C16—H16 $\cdots$ O2 and C15—H15 $\cdots$ Cg1 ( $\pi$ ) (Table 1) link the neighboring molecules within each strand (Figure 2). The average plane of an anthracenyl unit of a molecule in one strand forms an angle of 78.37 (2)° with an anthracenyl unit of a molecule in the neighboring strand. While the anthracenyl units of the molecules in one strand are parallel to each other and exhibit an off-set that would be beneficial for  $\pi$ - $\pi$  interaction, they are too far apart (distance between the averaged planes of the respective anthracenyl units: 3.362 (2) Å) to exhibit a strong  $\pi$ - $\pi$  interaction, in contrast with the non-brominated parent compound (Bugenhagen *et al.*, 2013).

The closest distance between double bonds of two molecules, which are molecules in one strand, is 5.321 (3) Å. Although this distance is smaller than the smallest distance found in the non-brominated parent compound (5.549 (3) Å) (Bugenhagen *et al.*, 2013), it is larger than in many of those found for aryl-enes that undergo [2 + 2]-photodimerization readily (Vishnumurthy *et al.* 2002; Mascitti *et al.* 2006). The anthracenyl units themselves, while aligned parallel to each other in one strand, are off-set to each other and are much further apart (5.321 (3) Å for C1—C1 and C8—C8) than in anthracenes (less than 4.2 Å) that have been reported to undergo [4 + 4]-photodimerization in the crystal (Schmidt, 1971; Ihmels *et al.*, 2000).

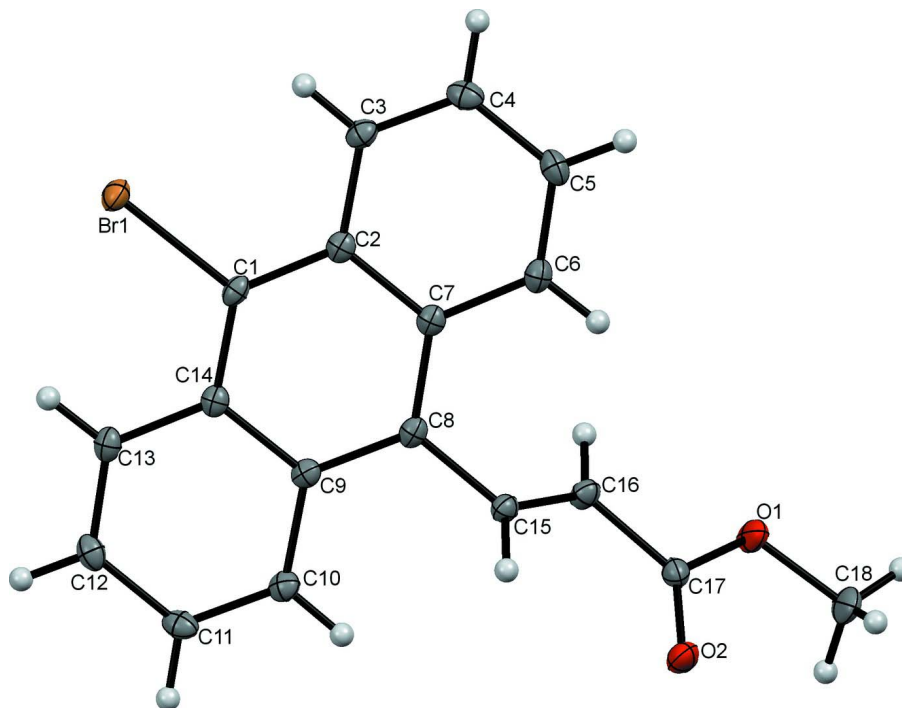
**S2. Experimental**

Methyl (E)-3-[10-bromoanthracen-9-yl]-2-propenoate: to a solution of (E)-3-[10-bromoanthracen-9-yl]-2-propenoic acid (875 mg, 2.68 mmol) in 1,2-dichloroethane (10 ml) was given an excess of thionyl chloride (1.0 g, 8.54 mmol), and the resulting mixture was kept at 70°C for 1.5 h. Thereafter, the ensuing solution was concentrated *in vacuo*. Thereafter, a solution of methanol (7 ml) in 1,2-dichloroethane (10 ml) was added, and the mixture was stirred at rt for 10 h. Then, it was concentrated *in vacuo*. The residue was taken up in dichloromethane (20 ml), extracted with water (2 X 10 ml), and dried over MgSO<sub>4</sub>. The solution was concentrated *in vacuo*, and the residue was subjected to column chromatography on silica gel (benzene-hexane 1:1) to give the title compound (847 mg, 93%) as a yellow solid; mp. 425 K; IR (KBr/cm<sup>-1</sup>)  $n_{\max}$  3066, 3021, 2950, 1711 (CO), 1631, 1436, 1338, 1315, 1254, 1203, 1180, 999, 900, 762, 749, 726;  $d_{\text{H}}$  (400 MHz, CDCl<sub>3</sub>) 3.92 (3H, s, OCH<sub>3</sub>), 6.38 (1H, d, <sup>3</sup>J = 16.0 Hz), 7.51 – 7.55 (2H, m), 7.59 – 7.63 (2H, m), 8.20 (2H, d, <sup>3</sup>J = 8.8 Hz), 8.55 (1H, d, <sup>3</sup>J = 16.0 Hz), 8.57 (2H, d, <sup>3</sup>J = 7.6 Hz);  $d_{\text{C}}$  (100.5 MHz, CDCl<sub>3</sub>) 52.0 (OCH<sub>3</sub>), 124.5 (C<sub>quat</sub>), 125.7 (2 C,

CH), 126.4 (2 C, CH), 127.2 (2 C, CH), 127.7 (CH), 128.4 (2 C, CH), 129.8 (2 C, C<sub>quat</sub>), 130.1 (C<sub>quat</sub>), 130.2 (2 C, C<sub>quat</sub>), 142.0 (CH), 166.6 (C<sub>quat</sub>, CO).

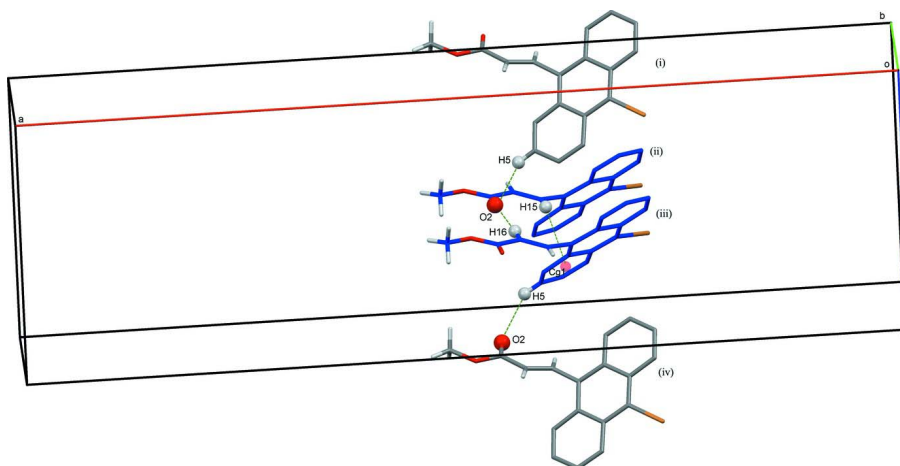
### S3. Refinement

All carbon-bound hydrogen atoms were placed in calculated positions with C—H distances of 0.93 - 0.96 Å and refined as riding with  $U_{\text{iso}}(\text{H}) = xU_{\text{eq}}(\text{C})$ , where  $x = 1.5$  for methyl and  $x = 1.2$  for all other H-atoms.



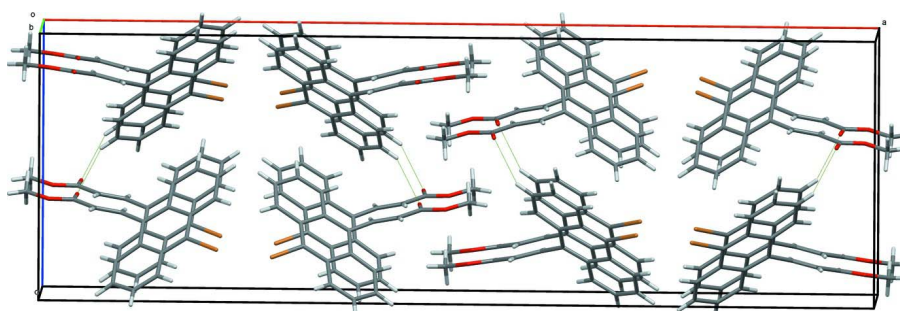
**Figure 1**

A view of the title molecule with the atom-numbering scheme. Displacement ellipsoids are shown at the 50% probability level.



**Figure 2**

The close contacts C—H...O and C—H... $\pi$  between two molecules (colored in blue) in one strand, in addition to the C—H...O interaction between molecules of neighboring strands (related by c-glide operation). [Symmetry codes: (i)  $x, 2 - y, -1/2 + z$ ; (ii)  $x, 1 + y, z$ ; (iii)  $x, y, z$ ; (iv)  $x, 1 - y, 1/2 + z$ ]



**Figure 3**

The eight strands crossing the unit cell and propagating along the  $b$  axis with C—H...O interaction between neighboring strands shown as dashed lines.

### Methyl 3-(10-bromoanthracen-9-yl)prop-2-enoate

#### Crystal data

$C_{18}H_{13}BrO_2$

$M_r = 341.19$

Orthorhombic,  $Pbcn$

$a = 40.5848$  (4) Å

$b = 5.32093$  (5) Å

$c = 13.0710$  (1) Å

$V = 2822.67$  (5) Å<sup>3</sup>

$Z = 8$

$F(000) = 1376$

$D_x = 1.606$  Mg m<sup>-3</sup>

Melting point: 425 K

Cu  $K\alpha$  radiation,  $\lambda = 1.5418$  Å

Cell parameters from 13502 reflections

$\theta = 4.3$ – $76.3^\circ$

$\mu = 3.98$  mm<sup>-1</sup>

$T = 100$  K

Block, light yellow

$0.21 \times 0.19 \times 0.13$  mm

#### Data collection

Oxford Diffraction SuperNova, Dual, Cu at zero, Atlas diffractometer

Radiation source: SuperNova (Cu) X-ray Source

Mirror monochromator

Detector resolution: 10.4127 pixels mm<sup>-1</sup>

$\omega$  scans  
 Absorption correction: analytical  
 (*CrysAlis PRO*; Agilent, 2013)  
 $T_{\min} = 0.891$ ,  $T_{\max} = 0.924$   
 25313 measured reflections  
 2961 independent reflections

2900 reflections with  $I > 2\sigma(I)$   
 $R_{\text{int}} = 0.022$   
 $\theta_{\max} = 76.3^\circ$ ,  $\theta_{\min} = 4.4^\circ$   
 $h = -50 \rightarrow 44$   
 $k = -5 \rightarrow 6$   
 $l = -15 \rightarrow 16$

*Refinement*

Refinement on  $F^2$   
 Least-squares matrix: full  
 $R[F^2 > 2\sigma(F^2)] = 0.026$   
 $wR(F^2) = 0.066$   
 $S = 1.12$   
 2961 reflections  
 191 parameters  
 0 restraints

Primary atom site location: structure-invariant  
 direct methods  
 Hydrogen site location: inferred from  
 neighbouring sites  
 H-atom parameters constrained  
 $w = 1/[\sigma^2(F_o^2) + (0.0253P)^2 + 4.4132P]$   
 where  $P = (F_o^2 + 2F_c^2)/3$   
 $(\Delta/\sigma)_{\max} = 0.003$   
 $\Delta\rho_{\max} = 0.31 \text{ e } \text{\AA}^{-3}$   
 $\Delta\rho_{\min} = -0.44 \text{ e } \text{\AA}^{-3}$

*Special details*

**Geometry.** All e.s.d.'s (except the e.s.d. in the dihedral angle between two l.s. planes) are estimated using the full covariance matrix. The cell e.s.d.'s are taken into account individually in the estimation of e.s.d.'s in distances, angles and torsion angles; correlations between e.s.d.'s in cell parameters are only used when they are defined by crystal symmetry. An approximate (isotropic) treatment of cell e.s.d.'s is used for estimating e.s.d.'s involving l.s. planes.

*Fractional atomic coordinates and isotropic or equivalent isotropic displacement parameters ( $\text{\AA}^2$ )*

|     | <i>x</i>    | <i>y</i>    | <i>z</i>     | $U_{\text{iso}}^*/U_{\text{eq}}$ |
|-----|-------------|-------------|--------------|----------------------------------|
| Br1 | 0.28462 (2) | 1.11853 (4) | 0.77185 (2)  | 0.01637 (8)                      |
| C1  | 0.32116 (4) | 0.9076 (3)  | 0.73973 (14) | 0.0125 (4)                       |
| C10 | 0.34022 (5) | 0.3729 (3)  | 0.56492 (14) | 0.0143 (4)                       |
| C11 | 0.31165 (5) | 0.3554 (4)  | 0.51014 (14) | 0.0159 (4)                       |
| C12 | 0.28558 (4) | 0.5263 (4)  | 0.52784 (14) | 0.0157 (4)                       |
| C13 | 0.28813 (4) | 0.7045 (4)  | 0.60248 (14) | 0.0141 (4)                       |
| C14 | 0.31732 (4) | 0.7266 (3)  | 0.66306 (13) | 0.0121 (3)                       |
| C15 | 0.40212 (4) | 0.4163 (3)  | 0.67191 (14) | 0.0132 (4)                       |
| C16 | 0.43266 (4) | 0.4937 (4)  | 0.65111 (14) | 0.0145 (4)                       |
| C17 | 0.45923 (4) | 0.3109 (4)  | 0.63028 (14) | 0.0147 (4)                       |
| C18 | 0.51645 (5) | 0.2672 (4)  | 0.60385 (19) | 0.0263 (5)                       |
| C2  | 0.35047 (4) | 0.9392 (3)  | 0.79499 (14) | 0.0122 (3)                       |
| C3  | 0.35474 (5) | 1.1300 (3)  | 0.87078 (14) | 0.0144 (4)                       |
| C4  | 0.38315 (5) | 1.1478 (4)  | 0.92569 (14) | 0.0165 (4)                       |
| C5  | 0.40887 (4) | 0.9717 (4)  | 0.91069 (14) | 0.0160 (4)                       |
| C6  | 0.40616 (4) | 0.7915 (4)  | 0.83732 (14) | 0.0148 (4)                       |
| C7  | 0.37738 (4) | 0.7705 (3)  | 0.77405 (13) | 0.0119 (3)                       |
| C8  | 0.37435 (4) | 0.5854 (3)  | 0.69716 (14) | 0.0120 (3)                       |
| C9  | 0.34444 (4) | 0.5594 (3)  | 0.64271 (14) | 0.0120 (3)                       |
| H10 | 0.3573      | 0.2613      | 0.5514       | 0.017*                           |
| H11 | 0.3093      | 0.2304      | 0.4609       | 0.019*                           |
| H12 | 0.2666      | 0.5171      | 0.4883       | 0.019*                           |
| H13 | 0.2706      | 0.8133      | 0.6141       | 0.017*                           |

|      |             |            |              |            |
|------|-------------|------------|--------------|------------|
| H15  | 0.3980      | 0.2444     | 0.6704       | 0.016*     |
| H16  | 0.4373      | 0.6648     | 0.6497       | 0.017*     |
| H18A | 0.5146      | 0.1947     | 0.5368       | 0.039*     |
| H18B | 0.5169      | 0.1357     | 0.6541       | 0.039*     |
| H18C | 0.5364      | 0.3639     | 0.6081       | 0.039*     |
| H3   | 0.3378      | 1.2440     | 0.8828       | 0.017*     |
| H4   | 0.3857      | 1.2763     | 0.9733       | 0.020*     |
| H5   | 0.4277      | 0.9793     | 0.9512       | 0.019*     |
| H6   | 0.4234      | 0.6788     | 0.8279       | 0.018*     |
| O1   | 0.48841 (3) | 0.4289 (3) | 0.62263 (12) | 0.0218 (3) |
| O2   | 0.45611 (3) | 0.0860 (3) | 0.62159 (11) | 0.0188 (3) |

*Atomic displacement parameters (Å<sup>2</sup>)*

|     | $U^{11}$     | $U^{22}$     | $U^{33}$     | $U^{12}$    | $U^{13}$    | $U^{23}$     |
|-----|--------------|--------------|--------------|-------------|-------------|--------------|
| Br1 | 0.01322 (11) | 0.01739 (12) | 0.01851 (12) | 0.00440 (7) | 0.00145 (7) | -0.00092 (7) |
| C1  | 0.0115 (8)   | 0.0126 (8)   | 0.0134 (8)   | 0.0022 (7)  | 0.0032 (7)  | 0.0026 (7)   |
| C10 | 0.0131 (8)   | 0.0149 (9)   | 0.0150 (8)   | -0.0007 (7) | 0.0037 (7)  | -0.0002 (7)  |
| C11 | 0.0174 (9)   | 0.0177 (9)   | 0.0126 (8)   | -0.0038 (7) | 0.0028 (7)  | -0.0025 (7)  |
| C12 | 0.0129 (8)   | 0.0203 (10)  | 0.0140 (9)   | -0.0035 (7) | -0.0003 (7) | 0.0027 (8)   |
| C13 | 0.0115 (8)   | 0.0151 (9)   | 0.0155 (9)   | 0.0000 (7)  | 0.0014 (7)  | 0.0039 (8)   |
| C14 | 0.0111 (8)   | 0.0130 (8)   | 0.0122 (8)   | -0.0004 (7) | 0.0020 (6)  | 0.0030 (7)   |
| C15 | 0.0141 (8)   | 0.0119 (8)   | 0.0137 (8)   | 0.0019 (7)  | -0.0009 (7) | -0.0001 (7)  |
| C16 | 0.0145 (8)   | 0.0111 (8)   | 0.0180 (9)   | 0.0009 (7)  | 0.0015 (7)  | 0.0005 (7)   |
| C17 | 0.0118 (8)   | 0.0175 (9)   | 0.0149 (8)   | -0.0002 (7) | -0.0009 (7) | -0.0021 (7)  |
| C18 | 0.0111 (9)   | 0.0307 (12)  | 0.0371 (12)  | 0.0045 (8)  | 0.0014 (8)  | -0.0118 (10) |
| C2  | 0.0119 (8)   | 0.0121 (8)   | 0.0126 (8)   | -0.0005 (7) | 0.0024 (7)  | 0.0030 (7)   |
| C3  | 0.0144 (8)   | 0.0137 (9)   | 0.0151 (9)   | 0.0008 (7)  | 0.0033 (7)  | 0.0000 (7)   |
| C4  | 0.0189 (9)   | 0.0173 (9)   | 0.0134 (8)   | -0.0037 (7) | 0.0027 (7)  | -0.0017 (7)  |
| C5  | 0.0124 (8)   | 0.0207 (10)  | 0.0148 (8)   | -0.0030 (7) | -0.0016 (7) | 0.0015 (8)   |
| C6  | 0.0117 (8)   | 0.0161 (9)   | 0.0167 (9)   | 0.0009 (7)  | 0.0005 (7)  | 0.0022 (7)   |
| C7  | 0.0117 (8)   | 0.0113 (8)   | 0.0128 (8)   | -0.0008 (7) | 0.0019 (6)  | 0.0031 (7)   |
| C8  | 0.0114 (8)   | 0.0109 (8)   | 0.0138 (8)   | 0.0005 (7)  | 0.0021 (7)  | 0.0032 (7)   |
| C9  | 0.0119 (8)   | 0.0113 (8)   | 0.0128 (8)   | -0.0009 (7) | 0.0031 (6)  | 0.0011 (7)   |
| O1  | 0.0098 (6)   | 0.0199 (7)   | 0.0356 (8)   | -0.0004 (5) | 0.0041 (6)  | -0.0088 (6)  |
| O2  | 0.0162 (6)   | 0.0136 (7)   | 0.0266 (7)   | 0.0024 (5)  | 0.0007 (6)  | -0.0016 (6)  |

*Geometric parameters (Å, °)*

|         |             |          |           |
|---------|-------------|----------|-----------|
| C1—Br1  | 1.9068 (18) | C18—H18C | 0.9600    |
| C1—C14  | 1.398 (3)   | C18—H18B | 0.9600    |
| C1—C2   | 1.402 (3)   | C18—H18A | 0.9600    |
| C10—C11 | 1.366 (3)   | C2—C7    | 1.440 (2) |
| C10—H10 | 0.9300      | C2—C3    | 1.429 (3) |
| C11—C12 | 1.414 (3)   | C3—C4    | 1.361 (3) |
| C11—H11 | 0.9300      | C3—H3    | 0.9300    |
| C12—C13 | 1.364 (3)   | C4—C5    | 1.416 (3) |
| C12—H12 | 0.9300      | C4—H4    | 0.9300    |

|               |              |                 |             |
|---------------|--------------|-----------------|-------------|
| C13—C14       | 1.430 (2)    | C5—C6           | 1.361 (3)   |
| C13—H13       | 0.9300       | C5—H5           | 0.9300      |
| C15—C16       | 1.334 (3)    | C6—C7           | 1.435 (2)   |
| C15—H15       | 0.9300       | C6—H6           | 0.9300      |
| C16—C17       | 1.478 (3)    | C7—C8           | 1.413 (3)   |
| C16—H16       | 0.9300       | C8—C15          | 1.479 (2)   |
| C17—O2        | 1.208 (2)    | C8—C9           | 1.414 (2)   |
| C17—O1        | 1.344 (2)    | C9—C14          | 1.440 (2)   |
| C18—O1        | 1.448 (2)    | C9—C10          | 1.431 (3)   |
|               |              |                 |             |
| C2—C1—Br1     | 118.41 (14)  | C11—C10—H10     | 119.3       |
| C14—C1—C2     | 123.12 (17)  | C10—C11—H11     | 119.8       |
| C14—C1—Br1    | 118.46 (14)  | C10—C11—C12     | 120.37 (18) |
| C1—C2—C3      | 123.06 (17)  | C12—C11—H11     | 119.8       |
| C1—C2—C7      | 118.09 (17)  | C11—C12—H12     | 119.8       |
| C3—C2—C7      | 118.85 (17)  | C13—C12—C11     | 120.48 (17) |
| C2—C3—H3      | 119.4        | C13—C12—H12     | 119.8       |
| C4—C3—C2      | 121.20 (18)  | C12—C13—H13     | 119.5       |
| C4—C3—H3      | 119.4        | C12—C13—C14     | 121.07 (17) |
| C3—C4—H4      | 119.8        | C14—C13—H13     | 119.5       |
| C3—C4—C5      | 120.32 (18)  | C1—C14—C9       | 118.22 (16) |
| C5—C4—H4      | 119.8        | C1—C14—C13      | 123.08 (17) |
| C4—C5—H5      | 119.9        | C13—C14—C9      | 118.68 (17) |
| C6—C5—C4      | 120.29 (17)  | C8—C15—H15      | 117.8       |
| C6—C5—H5      | 119.9        | C16—C15—C8      | 124.45 (17) |
| C5—C6—H6      | 119.1        | C16—C15—H15     | 117.8       |
| C5—C6—C7      | 121.77 (17)  | C15—C16—H16     | 119.6       |
| C7—C6—H6      | 119.1        | C15—C16—C17     | 120.83 (18) |
| C6—C7—C2      | 117.34 (16)  | C17—C16—H16     | 119.6       |
| C8—C7—C2      | 120.27 (16)  | O1—C17—C16      | 110.43 (17) |
| C8—C7—C6      | 122.32 (17)  | O2—C17—C16      | 126.35 (18) |
| C7—C8—C9      | 120.06 (16)  | O2—C17—O1       | 123.22 (18) |
| C7—C8—C15     | 121.10 (16)  | H18A—C18—H18B   | 109.5       |
| C9—C8—C15     | 118.84 (16)  | H18A—C18—H18C   | 109.5       |
| C8—C9—C10     | 121.88 (17)  | H18B—C18—H18C   | 109.5       |
| C8—C9—C14     | 120.18 (16)  | O1—C18—H18A     | 109.5       |
| C10—C9—C14    | 117.93 (16)  | O1—C18—H18B     | 109.5       |
| C9—C10—H10    | 119.3        | O1—C18—H18C     | 109.5       |
| C11—C10—C9    | 121.42 (18)  | C17—O1—C18      | 115.31 (16) |
|               |              |                 |             |
| C1—C2—C3—C4   | 177.29 (18)  | C8—C15—C16—C17  | 177.77 (17) |
| C1—C2—C7—C6   | -174.75 (17) | C9—C8—C15—C16   | 128.8 (2)   |
| C1—C2—C7—C8   | 2.3 (3)      | C9—C10—C11—C12  | 1.3 (3)     |
| C2—C1—C14—C9  | 2.3 (3)      | C10—C9—C14—C1   | 179.34 (16) |
| C2—C1—C14—C13 | -176.07 (17) | C10—C9—C14—C13  | -2.2 (3)    |
| C2—C3—C4—C5   | -1.8 (3)     | C10—C11—C12—C13 | -2.5 (3)    |
| C2—C7—C8—C9   | -2.1 (3)     | C11—C12—C13—C14 | 1.3 (3)     |
| C2—C7—C8—C15  | 177.76 (16)  | C12—C13—C14—C1  | 179.44 (18) |



|               |              |                |              |
|---------------|--------------|----------------|--------------|
| C3—C2—C7—C6   | 5.1 (2)      | C12—C13—C14—C9 | 1.1 (3)      |
| C3—C2—C7—C8   | -177.85 (16) | C14—C1—C2—C3   | 177.70 (17)  |
| C3—C4—C5—C6   | 3.6 (3)      | C14—C1—C2—C7   | -2.4 (3)     |
| C4—C5—C6—C7   | -0.9 (3)     | C14—C9—C10—C11 | 1.1 (3)      |
| C5—C6—C7—C2   | -3.5 (3)     | C15—C8—C9—C10  | 0.7 (3)      |
| C5—C6—C7—C8   | 179.56 (18)  | C15—C8—C9—C14  | -177.88 (16) |
| C6—C7—C8—C9   | 174.75 (17)  | C15—C16—C17—O1 | -173.18 (18) |
| C6—C7—C8—C15  | -5.4 (3)     | C15—C16—C17—O2 | 6.3 (3)      |
| C7—C2—C3—C4   | -2.6 (3)     | C16—C17—O1—C18 | 179.04 (17)  |
| C7—C8—C9—C10  | -179.43 (17) | O2—C17—O1—C18  | -0.5 (3)     |
| C7—C8—C9—C14  | 2.0 (3)      | Br1—C1—C2—C3   | -3.1 (2)     |
| C7—C8—C15—C16 | -51.1 (3)    | Br1—C1—C2—C7   | 176.78 (13)  |
| C8—C9—C10—C11 | -177.55 (18) | Br1—C1—C14—C9  | -176.89 (13) |
| C8—C9—C14—C1  | -2.0 (3)     | Br1—C1—C14—C13 | 4.7 (2)      |
| C8—C9—C14—C13 | 176.41 (17)  |                |              |

*Hydrogen-bond geometry* ( $\text{\AA}$ ,  $^\circ$ )

Cg1 is the centroid of the C2—C7 ring.

| <i>D</i> —H $\cdots$ <i>A</i>     | <i>D</i> —H | H $\cdots$ <i>A</i> | <i>D</i> $\cdots$ <i>A</i> | <i>D</i> —H $\cdots$ <i>A</i> |
|-----------------------------------|-------------|---------------------|----------------------------|-------------------------------|
| C15—H15 $\cdots$ Cg1 <sup>i</sup> | 0.93        | 2.91 (2)            | 3.5055 (19)                | 123                           |
| C16—H16 $\cdots$ O2 <sup>ii</sup> | 0.93        | 2.40                | 3.315 (3)                  | 170                           |
| C5—H5 $\cdots$ O2 <sup>iii</sup>  | 0.93        | 2.53                | 3.372 (2)                  | 150                           |

Symmetry codes: (i)  $x, y-1, z$ ; (ii)  $x, y+1, z$ ; (iii)  $x, -y+1, z+1/2$ .