

Acta Crystallographica Section E

## Structure Reports

Online

ISSN 1600-5368

## *trans*-Diaquabis(pyridazine-3-carboxylato- $\kappa^2N^2,O$ )cobalt(II) dihydrate

Beñat Artetxe, Santiago Reinoso, Leire San Felices, Jagoba Martín-Caballero and Juan M. Gutiérrez-Zorrilla\*

Departamento de Química Inorgánica, Facultad de Ciencia y Tecnología, Universidad de País Vasco UPV/EHU, PO Box 644, E-48080 Bilbao, Spain  
Correspondence e-mail: juanma.zorrilla@ehu.es

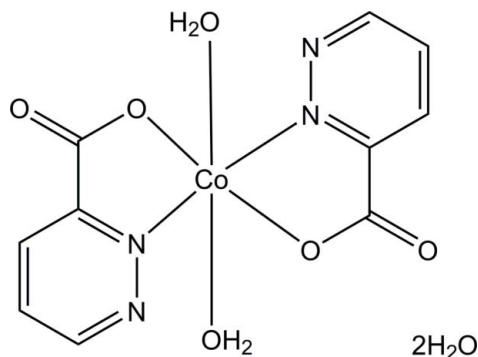
Received 19 June 2013; accepted 24 June 2013

Key indicators: single-crystal X-ray study;  $T = 100$  K; mean  $\sigma(C-C) = 0.003$  Å;  $R$  factor = 0.026;  $wR$  factor = 0.058; data-to-parameter ratio = 11.2.

The title compound,  $[Co(C_5H_3N_2O_2)_2(H_2O)_2] \cdot 2H_2O$ , contains a  $Co^{II}$  ion on an inversion center, exhibiting an octahedral coordination geometry. The equatorial plane is formed by two *trans*-related *N,O*-bidentate pyridazine-3-carboxylate ligands and the axial positions are occupied by two water molecules. The  $Co^{II}$  complex molecules are stacked in a column along the *a*-axis direction by an  $O-H \cdots N$  hydrogen bond between the non-coordinating pyridazine N atom and the coordinating water molecule. These columns are further connected into a layer parallel to the *ac* plane by additional hydrogen bonds involving the coordinating and non-coordinating water molecules, and the non-coordinating carboxylate O atom. The crystal packing is completed by interlayer weak  $C-H \cdots O$  interactions.

### Related literature

For the isotypic zinc(II) and manganese(II) complexes, see: Gryz *et al.* (2003); Ardiwnata *et al.* (1989). For a related zinc(II) complex which does not contain non-coordinating water molecules, see: Gryz *et al.* (2004).



### Experimental

#### Crystal data

$[Co(C_5H_3N_2O_2)_2(H_2O)_2] \cdot 2H_2O$   
 $M_r = 377.18$   
 Triclinic,  $P\bar{1}$   
 $a = 5.2934$  (4) Å  
 $b = 7.2817$  (8) Å  
 $c = 9.6196$  (9) Å  
 $\alpha = 79.673$  (8)°  
 $\beta = 89.875$  (7)°  
 $\gamma = 72.321$  (8)°  
 $V = 347.01$  (6) Å<sup>3</sup>  
 $Z = 1$   
 Mo  $K\alpha$  radiation  
 $\mu = 1.29$  mm<sup>-1</sup>  
 $T = 100$  K  
 $0.09 \times 0.07 \times 0.05$  mm

#### Data collection

Agilent SuperNova diffractometer  
 Absorption correction: multi-scan  
 (*CrysAlis PRO*; Agilent, 2011)  
 $T_{min} = 0.907$ ,  $T_{max} = 0.967$   
 2202 measured reflections  
 1369 independent reflections  
 1309 reflections with  $I > 2\sigma(I)$   
 $R_{int} = 0.018$

#### Refinement

$R[F^2 > 2\sigma(F^2)] = 0.026$   
 $wR(F^2) = 0.058$   
 $S = 1.08$   
 1369 reflections  
 122 parameters  
 4 restraints  
 H atoms treated by a mixture of independent and constrained refinement  
 $\Delta\rho_{max} = 0.28$  e Å<sup>-3</sup>  
 $\Delta\rho_{min} = -0.31$  e Å<sup>-3</sup>

Table 1

Selected bond lengths (Å).

|        |             |         |             |
|--------|-------------|---------|-------------|
| Co1—O1 | 2.0689 (13) | Co1—O1W | 2.1199 (14) |
| Co1—N2 | 2.1023 (16) |         |             |

Table 2

Hydrogen-bond geometry (Å, °).

| <i>D</i> —H $\cdots$ <i>A</i>       | <i>D</i> —H | H $\cdots$ <i>A</i> | <i>D</i> $\cdots$ <i>A</i> | <i>D</i> —H $\cdots$ <i>A</i> |
|-------------------------------------|-------------|---------------------|----------------------------|-------------------------------|
| O2W—H2WA $\cdots$ O2 <sup>i</sup>   | 0.83 (2)    | 1.96 (2)            | 2.787 (2)                  | 175 (2)                       |
| O1W—H1WA $\cdots$ O2W               | 0.82 (2)    | 1.92 (2)            | 2.732 (2)                  | 171 (3)                       |
| O2W—H2WB $\cdots$ O2 <sup>ii</sup>  | 0.83 (2)    | 2.05 (2)            | 2.865 (2)                  | 168 (3)                       |
| O1W—H1WB $\cdots$ N1 <sup>iii</sup> | 0.82 (2)    | 2.07 (3)            | 2.862 (2)                  | 164 (3)                       |
| C4—H4 $\cdots$ O2 <sup>iv</sup>     | 0.95        | 2.37                | 3.188 (2)                  | 145                           |
| C6—H6 $\cdots$ O1W <sup>v</sup>     | 0.95        | 2.33                | 3.264 (3)                  | 166                           |

Symmetry codes: (i)  $x - 1, y, z$ ; (ii)  $-x + 1, -y + 1, -z$ ; (iii)  $-x, -y + 1, -z + 1$ ; (iv)  $-x + 1, -y + 2, -z$ ; (v)  $x - 1, y + 1, z$ .

Data collection: *CrysAlis PRO* (Agilent, 2011); cell refinement: *CrysAlis PRO*; data reduction: *CrysAlis PRO*; program(s) used to solve structure: *OLEX2* (Dolomanov *et al.*, 2009); program(s) used to refine structure: *SHELXL97* (Sheldrick, 2008); molecular graphics: *ORTEP-3 for Windows* (Farrugia, 2012); software used to prepare material for publication: *WinGX* (Farrugia, 2012) and *PLATON* (Spek, 2009).

This work has been supported financially by Eusko Jauriaritza/Gobierno Vasco (grants IT477-10 and S-PE11UN062) and the Universidad de País Vasco UPV/EHU (UFI11/53). BA thanks EJ/GV for his predoctoral fellowship.

Supplementary data and figures for this paper are available from the IUCr electronic archives (Reference: IS5284).

**References**

- Agilent (2011). *CrysAlis PRO*. Agilent Technologies, Yarnton, England.
- Ardiwnata, E. S., Craig, C. D. & Phillips, D. J. (1989). *Inorg. Chim. Acta*, **166**, 233–238.
- Dolomanov, O. V., Bourhis, L. J., Gildea, R. J., Howard, J. A. K. & Puschmann, H. (2009). *J. Appl. Cryst.* **42**, 339–341.
- Farrugia, L. J. (2012). *J. Appl. Cryst.* **45**, 849–854.
- Gryz, M., Starosta, W. & Leciejewicz, J. (2004). *Acta Cryst.* **E60**, m1481–m1483.
- Gryz, M., Starosta, W., Ptasiwicz, H. & Leciejewicz, J. (2003). *J. Coord. Chem.* **56**, 1505–1511.
- Sheldrick, G. M. (2008). *Acta Cryst.* **A64**, 112–122.
- Spek, A. L. (2009). *Acta Cryst.* **D65**, 148–155.

## supporting information

*Acta Cryst.* (2013). E69, m420–m421 [https://doi.org/10.1107/S1600536813017340]

## *trans*-Diaquabis(pyridazine-3-carboxylato- $\kappa^2N^2,O$ )cobalt(II) dihydrate

Beñat Artetxe, Santiago Reinoso, Leire San Felices, Jagoba Martín-Caballero and Juan M. Gutiérrez-Zorrilla

### S1. Comment

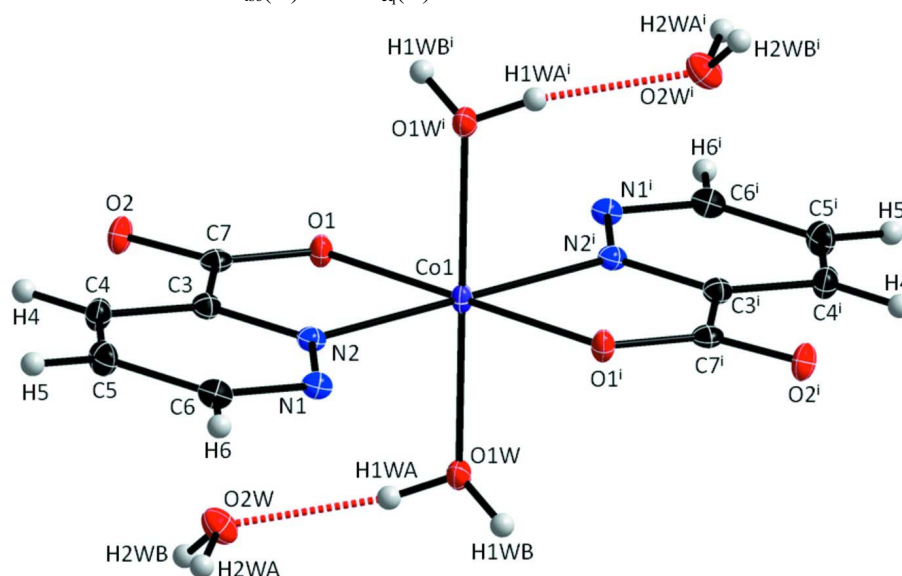
The title compound, *trans*-[Co(C<sub>4</sub>H<sub>3</sub>N<sub>2</sub>O<sub>2</sub>)<sub>2</sub>(H<sub>2</sub>O)<sub>2</sub>].2H<sub>2</sub>O, crystallizes in the triclinic crystal system, space group P-1, and it is isostructural with the zinc and manganese complexes previously reported by Gryz *et al.* (2003) and Ardiwlnata *et al.* (1989). As expected, the Co—O and Co—N distances (Table 1) are similar to those of the Zn(II) and Mn(II) analogues. Table 2 summarizes the geometrical parameters of the O—H···O and N—H···O hydrogen bonding interactions.

### S2. Experimental

To a solution of CoCl<sub>2</sub>.6H<sub>2</sub>O (71 mg, 0.3 mmol) in water (15 ml) 3-pyridazine carboxylic acid (74 mg, 0.6 mmol) was added and the resulting solution was stirred for 30 min at 90 °C. Prismatic orange crystals were obtained by slow evaporation after two days.

### S3. Refinement

H atoms of the water molecules were located in a Fourier difference map and refined isotropically with O—H bond lengths restrained to 0.84 (2) Å. All H atoms of the pyridazine ring were positioned geometrically and refined using a riding model with C—H = 0.95 Å and  $U_{iso}(H) = 1.2U_{eq}(C)$ .



**Figure 1**

Molecular structure of the title compound, showing atom labelling and 50% probability displacement ellipsoids.

[Symmetry code: (i) 1 - x, 1 - y, 1 - z.]

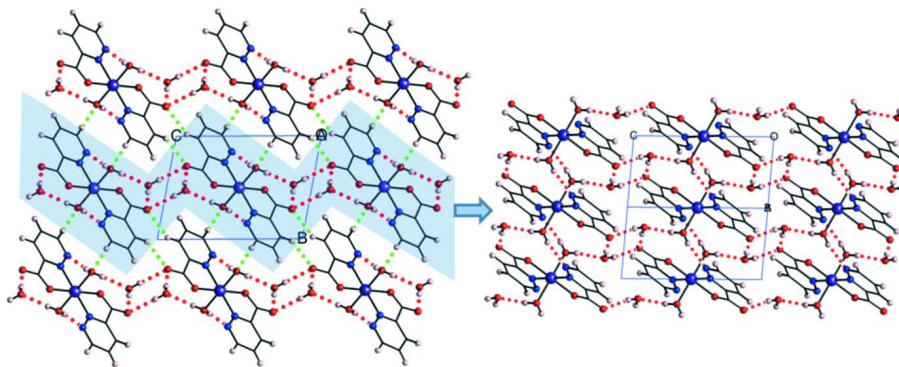


Figure 2

Left: View of the crystal packing along the crystallographic  $a$  axis. Right: Projection of a layer along the  $[\bar{1}10]$  direction (O—H $\cdots$ O and O—H $\cdots$ N hydrogen bonds represented as dotted red lines and C—H $\cdots$ O weak interactions as dotted green lines).

### *trans*-Diaquabis(pyridazine-3-carboxylato- $\kappa^2N^2,O$ )cobalt(II) dihydrate

#### Crystal data

[Co(C<sub>5</sub>H<sub>3</sub>N<sub>2</sub>O<sub>2</sub>)<sub>2</sub>(H<sub>2</sub>O)<sub>2</sub>] $\cdot$ 2H<sub>2</sub>O

$M_r = 377.18$

Triclinic,  $P\bar{1}$

Hall symbol:  $-P\ 1$

$a = 5.2934$  (4) Å

$b = 7.2817$  (8) Å

$c = 9.6196$  (9) Å

$\alpha = 79.673$  (8) $^\circ$

$\beta = 89.875$  (7) $^\circ$

$\gamma = 72.321$  (8) $^\circ$

$V = 347.01$  (6) Å<sup>3</sup>

$Z = 1$

$F(000) = 193$

$D_x = 1.805$  Mg m<sup>-3</sup>

Mo  $K\alpha$  radiation,  $\lambda = 0.71073$  Å

Cell parameters from 1404 reflections

$\theta = 2.2$ – $27.8^\circ$

$\mu = 1.29$  mm<sup>-1</sup>

$T = 100$  K

Prism, orange

$0.09 \times 0.07 \times 0.05$  mm

#### Data collection

Agilent SuperNova Single source at offset diffractometer

Radiation source: SuperNova (Mo) X-ray Source

Mirror monochromator

Detector resolution: 16.2439 pixels mm<sup>-1</sup>

$\omega$  scans

Absorption correction: multi-scan

(*CrysAlis PRO*; Agilent, 2011)

$T_{\min} = 0.907$ ,  $T_{\max} = 0.967$

2202 measured reflections

1369 independent reflections

1309 reflections with  $I > 2\sigma(I)$

$R_{\text{int}} = 0.018$

$\theta_{\max} = 26^\circ$ ,  $\theta_{\min} = 2.2^\circ$

$h = -6 \rightarrow 6$

$k = -8 \rightarrow 7$

$l = -11 \rightarrow 11$

#### Refinement

Refinement on  $F^2$

Least-squares matrix: full

$R[F^2 > 2\sigma(F^2)] = 0.026$

$wR(F^2) = 0.058$

$S = 1.08$

1369 reflections

122 parameters

4 restraints

Primary atom site location: structure-invariant direct methods

Secondary atom site location: difference Fourier map

Hydrogen site location: difference Fourier map  
H atoms treated by a mixture of independent and constrained refinement

$w = 1/[\sigma^2(F_o^2) + (0.0165P)^2 + 0.2394P]$

where  $P = (F_o^2 + 2F_c^2)/3$

$(\Delta/\sigma)_{\max} < 0.001$

$\Delta\rho_{\max} = 0.28$  e Å<sup>-3</sup>

$\Delta\rho_{\min} = -0.31$  e Å<sup>-3</sup>

*Special details*

**Experimental.** IR (cm<sup>-1</sup>): 3500(*s*), 3320(*s*), 3229(*s*), 3075(*s*), 1626(*s*), 1580(*m*), 1559(*s*), 1451(*w*), 1385(*w*), 1227(*w*), 1163(*w*), 1090(*w*), 1074(*w*), 1034(*w*), 988(*m*), 851(*m*), 783(*m*), 721(*m*), 675(*m*), 536(*w*), 440(*w*).

**Geometry.** All e.s.d.'s (except the e.s.d. in the dihedral angle between two l.s. planes) are estimated using the full covariance matrix. The cell e.s.d.'s are taken into account individually in the estimation of e.s.d.'s in distances, angles and torsion angles; correlations between e.s.d.'s in cell parameters are only used when they are defined by crystal symmetry. An approximate (isotropic) treatment of cell e.s.d.'s is used for estimating e.s.d.'s involving l.s. planes.

**Refinement.** Refinement of  $F^2$  against ALL reflections. The weighted  $R$ -factor  $wR$  and goodness of fit  $S$  are based on  $F^2$ , conventional  $R$ -factors  $R$  are based on  $F$ , with  $F$  set to zero for negative  $F^2$ . The threshold expression of  $F^2 > \sigma(F^2)$  is used only for calculating  $R$ -factors(gt) *etc.* and is not relevant to the choice of reflections for refinement.  $R$ -factors based on  $F^2$  are statistically about twice as large as those based on  $F$ , and  $R$ -factors based on ALL data will be even larger.

*Fractional atomic coordinates and isotropic or equivalent isotropic displacement parameters ( $\text{\AA}^2$ )*

|      | <i>x</i>    | <i>y</i>     | <i>z</i>     | $U_{\text{iso}}^*/U_{\text{eq}}$ |
|------|-------------|--------------|--------------|----------------------------------|
| Co1  | 0.5         | 0.5          | 0.5          | 0.00870 (12)                     |
| O1W  | 0.3333 (3)  | 0.3129 (2)   | 0.41228 (15) | 0.0114 (3)                       |
| N1   | -0.0009 (3) | 0.8482 (2)   | 0.40078 (17) | 0.0106 (3)                       |
| O1   | 0.7179 (3)  | 0.52521 (19) | 0.32270 (14) | 0.0108 (3)                       |
| O2   | 0.7178 (3)  | 0.7107 (2)   | 0.11041 (14) | 0.0134 (3)                       |
| N2   | 0.2411 (3)  | 0.7466 (2)   | 0.36752 (17) | 0.0097 (3)                       |
| O2W  | 0.2458 (3)  | 0.4748 (2)   | 0.13080 (16) | 0.0164 (3)                       |
| C5   | -0.0299 (4) | 1.0868 (3)   | 0.1892 (2)   | 0.0143 (4)                       |
| H5   | -0.1268     | 1.2074       | 0.1306       | 0.017*                           |
| C7   | 0.6162 (4)  | 0.6691 (3)   | 0.2244 (2)   | 0.0105 (4)                       |
| C3   | 0.3458 (4)  | 0.8063 (3)   | 0.2481 (2)   | 0.0098 (4)                       |
| C6   | -0.1312 (4) | 1.0140 (3)   | 0.3137 (2)   | 0.0123 (4)                       |
| H6   | -0.3022     | 1.0865       | 0.3375       | 0.015*                           |
| C4   | 0.2144 (4)  | 0.9783 (3)   | 0.1543 (2)   | 0.0130 (4)                       |
| H4   | 0.2908      | 1.0191       | 0.0695       | 0.016*                           |
| H2WA | 0.086 (3)   | 0.541 (3)    | 0.122 (3)    | 0.029 (7)*                       |
| H1WA | 0.291 (5)   | 0.359 (3)    | 0.3285 (18)  | 0.024 (7)*                       |
| H2WB | 0.281 (5)   | 0.420 (4)    | 0.062 (2)    | 0.032 (8)*                       |
| H1WB | 0.214 (4)   | 0.281 (4)    | 0.454 (3)    | 0.031 (7)*                       |

*Atomic displacement parameters ( $\text{\AA}^2$ )*

|     | $U^{11}$    | $U^{22}$    | $U^{33}$     | $U^{12}$      | $U^{13}$     | $U^{23}$     |
|-----|-------------|-------------|--------------|---------------|--------------|--------------|
| Co1 | 0.0088 (2)  | 0.0093 (2)  | 0.00666 (19) | -0.00195 (15) | 0.00114 (14) | 0.00030 (14) |
| O1W | 0.0119 (7)  | 0.0136 (7)  | 0.0087 (7)   | -0.0048 (6)   | 0.0012 (6)   | -0.0001 (6)  |
| N1  | 0.0095 (8)  | 0.0113 (8)  | 0.0114 (8)   | -0.0029 (7)   | 0.0008 (6)   | -0.0036 (7)  |
| O1  | 0.0104 (7)  | 0.0111 (7)  | 0.0088 (7)   | -0.0019 (6)   | 0.0010 (5)   | 0.0012 (5)   |
| O2  | 0.0161 (7)  | 0.0143 (7)  | 0.0089 (7)   | -0.0045 (6)   | 0.0051 (6)   | -0.0002 (6)  |
| N2  | 0.0091 (8)  | 0.0116 (8)  | 0.0096 (8)   | -0.0040 (7)   | 0.0008 (6)   | -0.0035 (7)  |
| O2W | 0.0148 (8)  | 0.0210 (8)  | 0.0127 (8)   | -0.0029 (7)   | 0.0002 (6)   | -0.0060 (6)  |
| C5  | 0.0163 (10) | 0.0095 (10) | 0.0146 (11)  | -0.0021 (8)   | -0.0025 (8)  | 0.0009 (8)   |
| C7  | 0.0114 (9)  | 0.0104 (9)  | 0.0119 (10)  | -0.0053 (8)   | 0.0002 (8)   | -0.0046 (8)  |
| C3  | 0.0103 (9)  | 0.0105 (9)  | 0.0097 (9)   | -0.0037 (8)   | 0.0009 (7)   | -0.0037 (8)  |
| C6  | 0.0106 (10) | 0.0127 (10) | 0.0138 (10)  | -0.0024 (8)   | 0.0005 (8)   | -0.0049 (8)  |

|    |             |             |             |             |            |            |
|----|-------------|-------------|-------------|-------------|------------|------------|
| C4 | 0.0160 (10) | 0.0129 (10) | 0.0102 (10) | -0.0057 (8) | 0.0012 (8) | 0.0002 (8) |
|----|-------------|-------------|-------------|-------------|------------|------------|

*Geometric parameters (Å, °)*

|                                       |              |               |              |
|---------------------------------------|--------------|---------------|--------------|
| Co1—O1                                | 2.0689 (13)  | O2—C7         | 1.249 (2)    |
| Co1—O1 <sup>i</sup>                   | 2.0689 (13)  | N2—C3         | 1.334 (2)    |
| Co1—N2 <sup>i</sup>                   | 2.1023 (16)  | O2W—H2WA      | 0.835 (17)   |
| Co1—N2                                | 2.1023 (16)  | O2W—H2WB      | 0.824 (17)   |
| Co1—O1W                               | 2.1199 (14)  | C5—C4         | 1.372 (3)    |
| Co1—O1W <sup>i</sup>                  | 2.1199 (14)  | C5—C6         | 1.395 (3)    |
| O1W—H1WA                              | 0.819 (16)   | C5—H5         | 0.95         |
| O1W—H1WB                              | 0.822 (17)   | C7—C3         | 1.520 (3)    |
| N1—C6                                 | 1.330 (2)    | C3—C4         | 1.391 (3)    |
| N1—N2                                 | 1.341 (2)    | C6—H6         | 0.95         |
| O1—C7                                 | 1.259 (2)    | C4—H4         | 0.95         |
| O1—Co1—O1 <sup>i</sup>                | 180          | C3—N2—N1      | 121.11 (16)  |
| O1—Co1—N2 <sup>i</sup>                | 101.76 (6)   | C3—N2—Co1     | 113.96 (13)  |
| O1 <sup>i</sup> —Co1—N2 <sup>i</sup>  | 78.24 (6)    | N1—N2—Co1     | 124.73 (12)  |
| O1—Co1—N2                             | 78.24 (6)    | H2WA—O2W—H2WB | 108 (3)      |
| O1 <sup>i</sup> —Co1—N2               | 101.76 (6)   | C4—C5—C6      | 117.74 (18)  |
| N2 <sup>i</sup> —Co1—N2               | 180          | C4—C5—H5      | 121.1        |
| O1—Co1—O1W                            | 89.54 (5)    | C6—C5—H5      | 121.1        |
| O1 <sup>i</sup> —Co1—O1W              | 90.46 (5)    | O2—C7—O1      | 126.21 (18)  |
| N2 <sup>i</sup> —Co1—O1W              | 89.58 (6)    | O2—C7—C3      | 117.09 (17)  |
| N2—Co1—O1W                            | 90.42 (6)    | O1—C7—C3      | 116.69 (16)  |
| O1—Co1—O1W <sup>i</sup>               | 90.46 (5)    | N2—C3—C4      | 122.10 (18)  |
| O1 <sup>i</sup> —Co1—O1W <sup>i</sup> | 89.54 (5)    | N2—C3—C7      | 114.00 (16)  |
| N2 <sup>i</sup> —Co1—O1W <sup>i</sup> | 90.42 (6)    | C4—C3—C7      | 123.89 (17)  |
| N2—Co1—O1W <sup>i</sup>               | 89.58 (6)    | N1—C6—C5      | 123.38 (18)  |
| O1W—Co1—O1W <sup>i</sup>              | 180.00 (4)   | N1—C6—H6      | 118.3        |
| Co1—O1W—H1WA                          | 109.3 (17)   | C5—C6—H6      | 118.3        |
| Co1—O1W—H1WB                          | 117.4 (18)   | C5—C4—C3      | 117.37 (18)  |
| H1WA—O1W—H1WB                         | 112 (2)      | C5—C4—H4      | 121.3        |
| C6—N1—N2                              | 118.24 (16)  | C3—C4—H4      | 121.3        |
| C7—O1—Co1                             | 116.67 (12)  |               |              |
| N2 <sup>i</sup> —Co1—O1—C7            | -176.98 (13) | Co1—O1—C7—C3  | -0.1 (2)     |
| N2—Co1—O1—C7                          | 3.02 (13)    | N1—N2—C3—C4   | 1.8 (3)      |
| O1W—Co1—O1—C7                         | 93.54 (13)   | Co1—N2—C3—C4  | -173.40 (14) |
| O1W <sup>i</sup> —Co1—O1—C7           | -86.46 (13)  | N1—N2—C3—C7   | -177.51 (15) |
| C6—N1—N2—C3                           | -2.1 (3)     | Co1—N2—C3—C7  | 7.27 (19)    |
| C6—N1—N2—Co1                          | 172.59 (13)  | O2—C7—C3—N2   | 175.85 (16)  |
| O1—Co1—N2—C3                          | -5.73 (12)   | O1—C7—C3—N2   | -5.0 (2)     |
| O1 <sup>i</sup> —Co1—N2—C3            | 174.27 (12)  | O2—C7—C3—C4   | -3.5 (3)     |
| O1W—Co1—N2—C3                         | -95.18 (13)  | O1—C7—C3—C4   | 175.72 (17)  |
| O1W <sup>i</sup> —Co1—N2—C3           | 84.82 (13)   | N2—N1—C6—C5   | 0.4 (3)      |
| O1—Co1—N2—N1                          | 179.25 (15)  | C4—C5—C6—N1   | 1.5 (3)      |

|                             |             |             |             |
|-----------------------------|-------------|-------------|-------------|
| O1 <sup>i</sup> —Co1—N2—N1  | -0.75 (15)  | C6—C5—C4—C3 | -1.7 (3)    |
| O1W—Co1—N2—N1               | 89.80 (14)  | N2—C3—C4—C5 | 0.2 (3)     |
| O1W <sup>i</sup> —Co1—N2—N1 | -90.20 (14) | C7—C3—C4—C5 | 179.45 (17) |
| Co1—O1—C7—O2                | 179.04 (15) |             |             |

Symmetry code: (i)  $-x+1, -y+1, -z+1$ .

*Hydrogen-bond geometry (Å, °)*

| <i>D—H...A</i>               | <i>D—H</i> | <i>H...A</i> | <i>D...A</i> | <i>D—H...A</i> |
|------------------------------|------------|--------------|--------------|----------------|
| O2W—H2WA...O2 <sup>ii</sup>  | 0.83 (2)   | 1.96 (2)     | 2.787 (2)    | 175 (2)        |
| O1W—H1WA...O2W               | 0.82 (2)   | 1.92 (2)     | 2.732 (2)    | 171 (3)        |
| O2W—H2WB...O2 <sup>iii</sup> | 0.83 (2)   | 2.05 (2)     | 2.865 (2)    | 168 (3)        |
| O1W—H1WB...N1 <sup>iv</sup>  | 0.82 (2)   | 2.07 (3)     | 2.862 (2)    | 164 (3)        |
| C4—H4...O2 <sup>v</sup>      | 0.95       | 2.37         | 3.188 (2)    | 145            |
| C6—H6...O1W <sup>vi</sup>    | 0.95       | 2.33         | 3.264 (3)    | 166            |

Symmetry codes: (ii)  $x-1, y, z$ ; (iii)  $-x+1, -y+1, -z$ ; (iv)  $-x, -y+1, -z+1$ ; (v)  $-x+1, -y+2, -z$ ; (vi)  $x-1, y+1, z$ .