

Acta Crystallographica Section E

Structure Reports

Online

ISSN 1600-5368

(E)-1-[(2,4,6-Tribromophenyl)diazonyl]-naphthalen-2-ol

Souheyla Chetioui, Issam Boudraa,* Sofiane Bouacida, Abdelkader Bouchoul and Salah Eddine Bouaoud

Unité de Recherche de Chimie de l'Environnement et Moléculaire Structurale (CHEMS), Faculté des Sciences Exactes, Département de Chimie, Université Constantine 1, 25000 Constantine, Algeria

Correspondence e-mail: issam.boudraa@gmail.com

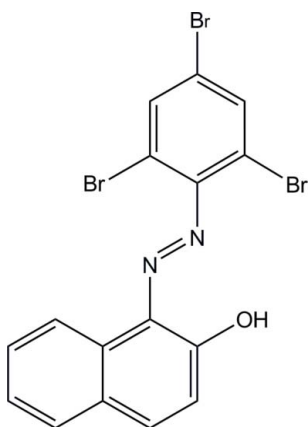
Received 3 July 2013; accepted 9 July 2013

Key indicators: single-crystal X-ray study; $T = 293$ K; mean $\sigma(\text{C}-\text{C}) = 0.006$ Å; R factor = 0.034; wR factor = 0.066; data-to-parameter ratio = 19.3.

The title azo molecule, $\text{C}_{16}\text{H}_9\text{Br}_3\text{N}_2\text{O}$, adopts a *trans* conformation with respect to the azo $\text{N}=\text{N}$ double bond. An intramolecular $\text{O}-\text{H}\cdots\text{N}$ hydrogen bond forms an $S(6)$ ring motif. The dihedral angle between the naphthalene ring system and the benzene ring is $33.80(16)^\circ$. In the crystal, molecules are stacked in columns along the a axis by $\pi-\pi$ interactions [centroid-centroid distances = $3.815(3)$ and $3.990(3)$ Å].

Related literature

For applications of azo compounds, see: Gale *et al.* (1998). For the synthesis of similar compounds, see: Wang *et al.* (2003); Heinrich *et al.* (2007). For bond lengths and angles in related azo compounds, see: Deveci *et al.* (2005); El-Ghamry *et al.* (2008).



Experimental

Crystal data

 $\text{C}_{16}\text{H}_9\text{Br}_3\text{N}_2\text{O}$ $M_r = 484.98$ Orthorhombic, $P2_12_12_1$
 $a = 3.9904(11)$ Å
 $b = 15.689(4)$ Å
 $c = 24.580(7)$ Å
 $V = 1538.8(7)$ Å³ $Z = 4$
Mo $K\alpha$ radiation
 $\mu = 7.87$ mm⁻¹
 $T = 293$ K
 $0.03 \times 0.02 \times 0.02$ mm

Data collection

Bruker APEXII CCD diffractometer
Absorption correction: multi-scan (SADABS; Sheldrick, 2004)
 $T_{\min} = 0.244$, $T_{\max} = 0.332$ 13143 measured reflections
3841 independent reflections
2910 reflections with $I > 2\sigma(I)$
 $R_{\text{int}} = 0.046$

Refinement

 $R[F^2 > 2\sigma(F^2)] = 0.034$
 $wR(F^2) = 0.066$
 $S = 0.96$
3841 reflections
199 parameters
H-atom parameters constrained $\Delta\rho_{\max} = 0.44$ e Å⁻³
 $\Delta\rho_{\min} = -0.44$ e Å⁻³
Absolute structure: Flack (1983),
1553 Friedel pairs
Flack parameter: 0.004 (13)

Table 1

Hydrogen-bond geometry (Å, °).

$D-H\cdots A$	$D-H$	$H\cdots A$	$D\cdots A$	$D-H\cdots A$
$\text{O1}-\text{H1}\cdots\text{N1}$	0.82	1.85	2.561 (4)	144

Data collection: APEX2 (Bruker, 2006); cell refinement: SAINT (Bruker, 2006); data reduction: SAINT; program(s) used to solve structure: SHELXS97 (Sheldrick, 2008); program(s) used to refine structure: SHELXL97 (Sheldrick, 2008); molecular graphics: ORTEP-3 for Windows (Farrugia, 2012); software used to prepare material for publication: WinGX (Farrugia, 2012).

We thank all researchers of the CHEMS Research Unit, University of Constantine, Algeria, for their valuable assistance. Thanks are due to the MESRS (Ministère de l'Enseignement Supérieur et de la Recherche Scientifique – Algérie) for financial support. We also express our gratitude to Professor L. Ouahab, Director of Research at the Laboratory UMR LCSIM 6511, CNRS, Rennes I (France), for recording the diffraction data and help with the structure determination.

Supplementary data and figures for this paper are available from the IUCr electronic archives (Reference: IS5290).

References

- Bruker (2006). APEX2 and SAINT. Bruker AXS Inc., Madison, Wisconsin, USA.
- Deveci, O., Işık, S., Albayrak, C. & Açar, E. (2005). *Acta Cryst.* **E61**, o3226–o3227.
- El-Ghamry, H., Issa, R., El-Baradie, K., Isagai, K., Masaoka, S. & Sakai, K. (2008). *Acta Cryst.* **E64**, o1673–o1674.
- Farrugia, L. J. (2012). *J. Appl. Cryst.* **45**, 849–854.
- Flack, H. D. (1983). *Acta Cryst.* **A39**, 876–881.
- Gale, P. A., Chen, Z., Drew, M. G. B., Heath, J. A. & Beer, P. D. (1998). *Polyhedron*, **4**, 405–412.
- Heinrich, M. R., Blank, O. & Wetzel, A. (2007). *J. Org. Chem.* **72**, 476–484.
- Sheldrick, G. M. (2004). SADABS. University of Göttingen, Germany.
- Sheldrick, G. M. (2008). *Acta Cryst.* **A64**, 112–122.
- Wang, M., Funabiki, K. & Matsui, M. (2003). *Dyes Pigm.* **57**, 77–86.

supporting information

Acta Cryst. (2013). E69, o1250 [doi:10.1107/S1600536813018977]

(E)-1-[(2,4,6-Tribromophenyl)diazenyl]naphthalen-2-ol

Souheyla Chetioui, Issam Boudraa, Sofiane Bouacida, Abdelkader Bouchoul and Salah Eddine Bouaoud

S1. Comment

It has been known for many years that the azo compounds are a widely used class of dyes due to their application in various fields such as the dyeing of textile fibers, the coloring of different materials, colored plastics and electrochemical sensors (Gale *et al.*, 1998). Azo dyes are synthetic colours that contain an azo group, as part of the structure. They are characterized by the azo linkage ($-N=N-$). Azo groups do not occur naturally. Many azo compounds have been synthesized by the diazotization and diazo coupling reaction (Wang *et al.*, 2003), which entails an electrophilic substitution reaction where an aryl diazonium-cation attacks another aryl ring, since diazonium salts are often unstable near room temperature; the azo coupling reactions are typically conducted near ice temperature.

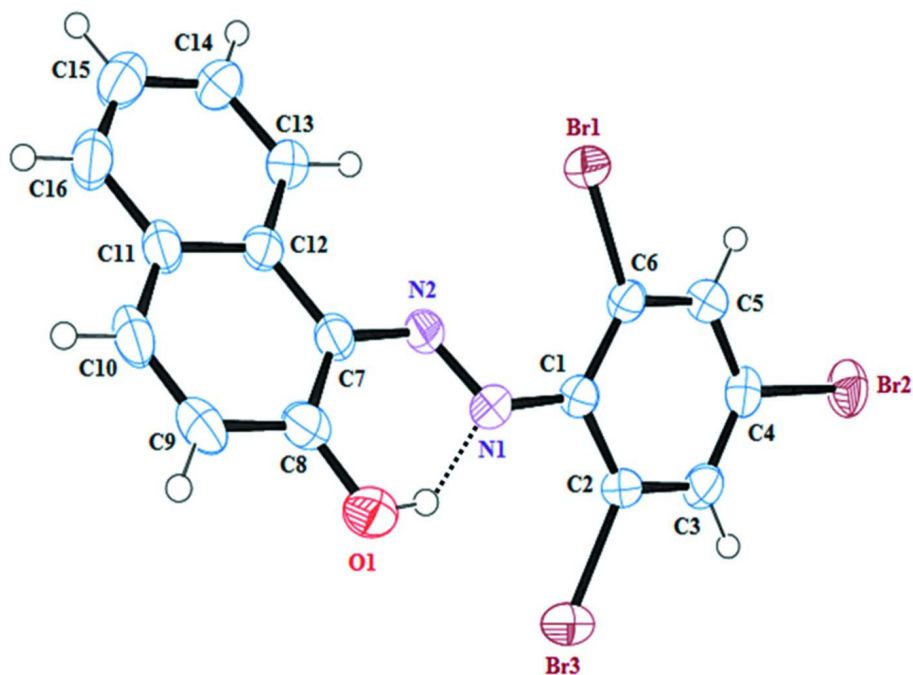
The pH of solution is quite important; it must be mildly acidic or neutral, since no reaction takes place if the pH is too low (Heinrich *et al.*, 2007). We report herein the crystal structure of the title compound (Fig. 1), obtained through the diazotization of 2,4,6-tribromoaniline followed by a coupling reaction with 2-naphthol. In the molecule of the title compound, all bond lengths are in good agreement with those reported for other azo compounds (Deveci *et al.*, 2005; El-Ghamry *et al.*, 2008). The bond lengths and angles are within normal ranges. The naphthalene ring system is oriented at a dihedral angle of $33.80(16)^\circ$ with respect to the benzene ring. In the crystal, molecules are packed into columns along the *a* axis by π - π interactions between adjacent molecules with the closest approach between centroids of aromatic rings being $3.815(3)$ Å (Fig. 2).

S2. Experimental

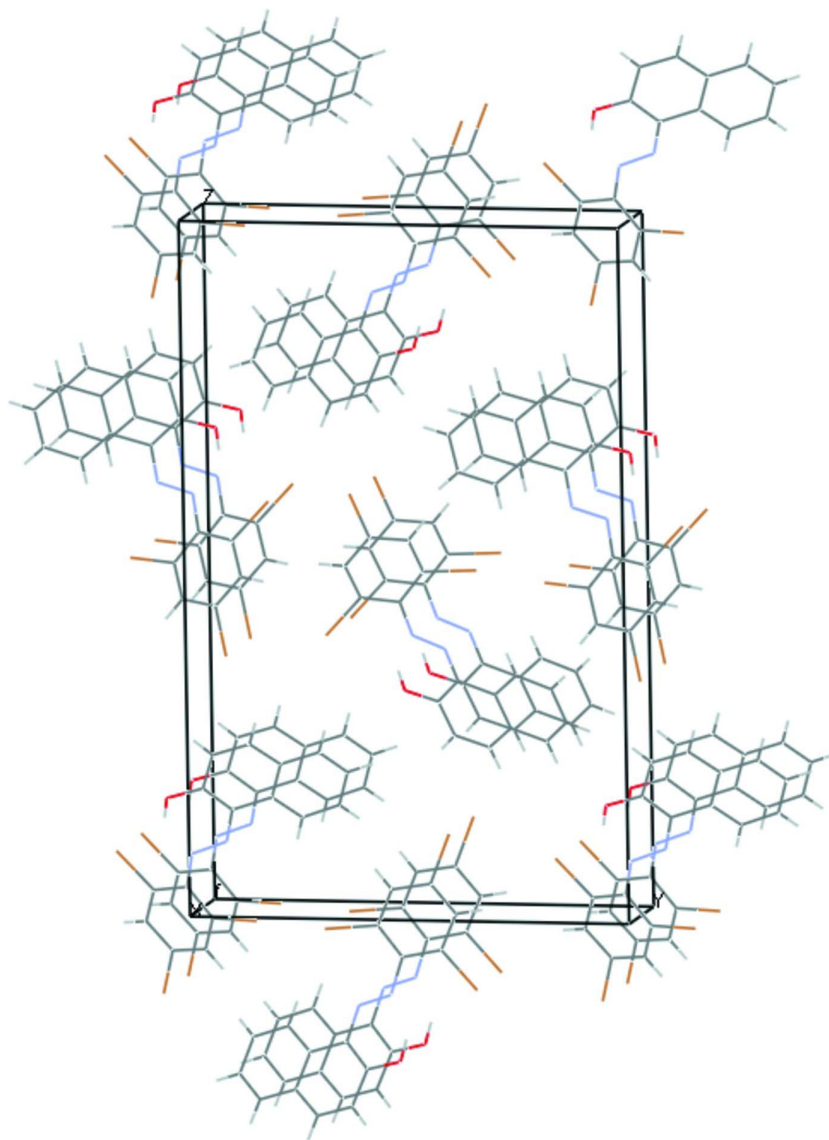
The title compound was prepared by the previously reported method in the literature; following the classical method of synthesis of other aromatic azo-compounds, diazotization of 2,4,6-tribromoaniline followed by a coupling reaction with 2-naphthol (Wang *et al.*, 2003). This gives a red powder which was crystallized from methanol solution leading to red prismatic crystals.

S3. Refinement

All H atoms have been placed in geometrically idealized positions (C—H = 0.93 Å and O—H = 0.82 Å) and refined as riding with $U_{\text{iso}}(\text{H}) = 1.2U_{\text{eq}}(\text{C})$ or $1.5U_{\text{eq}}(\text{O})$.

**Figure 1**

The molecular structure of the title compound, with atom labels and 50% probability displacement ellipsoids for non-H atoms. The dashed line indicates the O—H···N hydrogen bond.

**Figure 2**

A packing diagram of the title compound viewed along the *a* axis.

(E)-1-[(2,4,6-Tribromophenyl)diazenyl]naphthalen-2-ol*Crystal data*

$C_{16}H_9Br_3N_2O$

$M_r = 484.98$

Orthorhombic, $P2_12_12_1$

Hall symbol: P 2ac 2ab

$a = 3.9904$ (11) Å

$b = 15.689$ (4) Å

$c = 24.580$ (7) Å

$V = 1538.8$ (7) Å³

$Z = 4$

$F(000) = 928$

$D_x = 2.093$ Mg m⁻³

Melting point: 422 K

Mo $K\alpha$ radiation, $\lambda = 0.71073$ Å

Cell parameters from 2052 reflections

$\theta = 3.1$ – 28.6°

$\mu = 7.87$ mm⁻¹

$T = 293$ K

Prism, red

$0.03 \times 0.02 \times 0.02$ mm

Data collection

Bruker APEXII CCD
diffractometer

Radiation source: fine-focus sealed tube

Graphite monochromator

φ and ω scans

Absorption correction: multi-scan
(*SADABS*; Sheldrick, 2004)

$T_{\min} = 0.244$, $T_{\max} = 0.332$

13143 measured reflections

3841 independent reflections

2910 reflections with $I > 2\sigma(I)$

$R_{\text{int}} = 0.046$

$\theta_{\max} = 28.3^\circ$, $\theta_{\min} = 2.1^\circ$

$h = -5 \rightarrow 5$

$k = -20 \rightarrow 20$

$l = -32 \rightarrow 32$

Refinement

Refinement on F^2

Least-squares matrix: full

$R[F^2 > 2\sigma(F^2)] = 0.034$

$wR(F^2) = 0.066$

$S = 0.96$

3841 reflections

199 parameters

0 restraints

Primary atom site location: structure-invariant
direct methods

Secondary atom site location: difference Fourier
map

Hydrogen site location: inferred from
neighbouring sites

H-atom parameters constrained

$w = 1/[\sigma^2(F_o^2) + (0.0241P)^2]$

where $P = (F_o^2 + 2F_c^2)/3$

$(\Delta/\sigma)_{\max} < 0.001$

$\Delta\rho_{\max} = 0.44 \text{ e } \text{\AA}^{-3}$

$\Delta\rho_{\min} = -0.44 \text{ e } \text{\AA}^{-3}$

Absolute structure: Flack (1983), 1553 Friedel
pairs

Absolute structure parameter: 0.004 (13)

Special details

Geometry. All e.s.d.'s (except the e.s.d. in the dihedral angle between two l.s. planes) are estimated using the full covariance matrix. The cell e.s.d.'s are taken into account individually in the estimation of e.s.d.'s in distances, angles and torsion angles; correlations between e.s.d.'s in cell parameters are only used when they are defined by crystal symmetry. An approximate (isotropic) treatment of cell e.s.d.'s is used for estimating e.s.d.'s involving l.s. planes.

Refinement. Refinement of F^2 against ALL reflections. The weighted R -factor wR and goodness of fit S are based on F^2 , conventional R -factors R are based on F , with F set to zero for negative F^2 . The threshold expression of $F^2 > \sigma(F^2)$ is used only for calculating R -factors(gt) *etc.* and is not relevant to the choice of reflections for refinement. R -factors based on F^2 are statistically about twice as large as those based on F , and R -factors based on ALL data will be even larger.

Fractional atomic coordinates and isotropic or equivalent isotropic displacement parameters (\AA^2)

	x	y	z	$U_{\text{iso}}^*/U_{\text{eq}}$
Br1	-0.12633 (11)	-0.15833 (2)	0.00161 (2)	0.0379 (1)
Br2	0.51026 (12)	0.09227 (3)	0.12476 (2)	0.0481 (2)
Br3	0.12463 (15)	0.17248 (3)	-0.08940 (2)	0.0557 (2)
O1	-0.4121 (9)	0.02557 (17)	-0.18018 (11)	0.0512 (10)
N1	-0.0964 (9)	-0.01183 (18)	-0.09266 (12)	0.0352 (10)
N2	-0.0368 (8)	-0.08820 (18)	-0.10973 (11)	0.0317 (10)
C1	0.0433 (10)	0.0081 (2)	-0.04134 (14)	0.0304 (11)
C2	0.0607 (9)	-0.0479 (2)	0.00323 (14)	0.0304 (11)
C3	0.2004 (11)	-0.0226 (2)	0.05163 (14)	0.0333 (12)
C4	0.3199 (11)	0.0592 (2)	0.05766 (15)	0.0342 (11)
C5	0.2983 (11)	0.1171 (2)	0.01563 (15)	0.0373 (14)
C6	0.1572 (11)	0.0906 (2)	-0.03316 (14)	0.0337 (11)
C7	-0.1725 (10)	-0.1097 (2)	-0.15902 (14)	0.0307 (11)
C8	-0.3485 (12)	-0.0537 (3)	-0.19353 (15)	0.0387 (14)
C9	-0.4639 (11)	-0.0836 (3)	-0.24475 (15)	0.0432 (15)

C10	-0.4111 (11)	-0.1653 (3)	-0.25976 (14)	0.0437 (15)
C11	-0.2321 (11)	-0.2247 (3)	-0.22725 (14)	0.0355 (11)
C12	-0.1079 (10)	-0.1969 (2)	-0.17622 (14)	0.0299 (11)
C13	0.0637 (11)	-0.2558 (2)	-0.14376 (15)	0.0360 (14)
C14	0.1125 (12)	-0.3377 (2)	-0.16128 (16)	0.0443 (14)
C15	-0.0059 (13)	-0.3643 (3)	-0.21170 (17)	0.0487 (16)
C16	-0.1756 (13)	-0.3094 (3)	-0.24383 (16)	0.0470 (16)
H1	-0.33456	0.03546	-0.14993	0.0768*
H3	0.21435	-0.06078	0.08045	0.0402*
H5	0.37633	0.17259	0.01985	0.0449*
H9	-0.57652	-0.04673	-0.26807	0.0520*
H10	-0.49596	-0.18353	-0.29301	0.0524*
H13	0.14544	-0.23913	-0.10996	0.0432*
H14	0.22647	-0.37609	-0.13916	0.0531*
H15	0.03174	-0.41991	-0.22331	0.0588*
H16	-0.25621	-0.32774	-0.27734	0.0563*

Atomic displacement parameters (Å²)

	U^{11}	U^{22}	U^{33}	U^{12}	U^{13}	U^{23}
Br1	0.0446 (2)	0.0286 (2)	0.0405 (2)	-0.0047 (2)	0.0045 (2)	0.0003 (2)
Br2	0.0505 (3)	0.0582 (3)	0.0356 (2)	-0.0074 (2)	-0.0023 (2)	-0.0136 (2)
Br3	0.0867 (4)	0.0324 (2)	0.0481 (2)	-0.0006 (3)	0.0002 (3)	0.0081 (2)
O1	0.072 (2)	0.0408 (16)	0.0409 (16)	0.0086 (18)	-0.0086 (17)	0.0069 (13)
N1	0.045 (2)	0.0281 (16)	0.0324 (16)	-0.0006 (16)	0.0006 (17)	-0.0034 (13)
N2	0.035 (2)	0.0328 (16)	0.0273 (14)	-0.0046 (16)	0.0039 (14)	-0.0007 (13)
C1	0.031 (2)	0.0277 (18)	0.0324 (19)	0.0023 (18)	0.0052 (18)	-0.0024 (15)
C2	0.031 (2)	0.0263 (17)	0.0339 (18)	0.0023 (16)	0.0058 (19)	-0.0031 (16)
C3	0.036 (2)	0.033 (2)	0.031 (2)	0.0011 (19)	0.0048 (18)	0.0007 (16)
C4	0.031 (2)	0.041 (2)	0.0306 (19)	0.000 (2)	0.0028 (19)	-0.0106 (17)
C5	0.047 (3)	0.028 (2)	0.037 (2)	-0.0053 (19)	0.0080 (19)	-0.0072 (16)
C6	0.042 (2)	0.0272 (18)	0.0318 (19)	0.001 (2)	0.0068 (19)	0.0040 (16)
C7	0.033 (2)	0.035 (2)	0.0241 (18)	-0.0030 (19)	0.0019 (17)	0.0007 (16)
C8	0.045 (3)	0.036 (2)	0.035 (2)	-0.002 (2)	0.001 (2)	0.0053 (17)
C9	0.044 (3)	0.056 (3)	0.0297 (19)	-0.002 (2)	-0.005 (2)	0.0108 (19)
C10	0.048 (3)	0.059 (3)	0.0240 (18)	-0.013 (3)	0.0018 (18)	-0.0022 (19)
C11	0.037 (2)	0.045 (2)	0.0245 (19)	-0.011 (2)	0.0032 (18)	-0.0023 (18)
C12	0.028 (2)	0.0331 (19)	0.0286 (18)	-0.0085 (19)	0.0068 (17)	-0.0003 (15)
C13	0.040 (3)	0.038 (2)	0.0301 (19)	-0.002 (2)	0.0008 (18)	-0.0044 (16)
C14	0.052 (3)	0.036 (2)	0.045 (2)	0.005 (2)	0.006 (2)	-0.0030 (19)
C15	0.048 (3)	0.041 (2)	0.057 (3)	-0.004 (2)	0.013 (3)	-0.015 (2)
C16	0.054 (3)	0.053 (3)	0.034 (2)	-0.014 (2)	0.006 (2)	-0.016 (2)

Geometric parameters (Å, °)

Br1—C2	1.887 (3)	C9—C10	1.350 (7)
Br2—C4	1.889 (4)	C10—C11	1.420 (6)
Br3—C6	1.892 (3)	C11—C16	1.408 (7)

O1—C8	1.311 (5)	C11—C12	1.418 (5)
O1—H1	0.8200	C12—C13	1.400 (5)
N1—N2	1.292 (4)	C13—C14	1.369 (5)
N1—C1	1.414 (5)	C14—C15	1.390 (6)
N2—C7	1.369 (5)	C15—C16	1.351 (7)
C1—C2	1.406 (5)	C3—H3	0.9300
C1—C6	1.387 (5)	C5—H5	0.9300
C2—C3	1.373 (5)	C9—H9	0.9300
C3—C4	1.377 (5)	C10—H10	0.9300
C4—C5	1.378 (5)	C13—H13	0.9300
C5—C6	1.389 (5)	C14—H14	0.9300
C7—C8	1.409 (6)	C15—H15	0.9300
C7—C12	1.455 (5)	C16—H16	0.9300
C8—C9	1.420 (6)		
C8—O1—H1	109.00	C12—C11—C16	119.4 (4)
N2—N1—C1	115.0 (3)	C10—C11—C12	118.2 (4)
N1—N2—C7	116.3 (3)	C7—C12—C13	122.8 (3)
N1—C1—C2	125.2 (3)	C11—C12—C13	118.2 (3)
C2—C1—C6	117.0 (3)	C7—C12—C11	119.0 (3)
N1—C1—C6	117.7 (3)	C12—C13—C14	120.7 (3)
Br1—C2—C3	116.4 (2)	C13—C14—C15	120.9 (4)
C1—C2—C3	121.0 (3)	C14—C15—C16	120.0 (4)
Br1—C2—C1	122.5 (3)	C11—C16—C15	120.9 (4)
C2—C3—C4	120.2 (3)	C2—C3—H3	120.00
Br2—C4—C5	119.9 (3)	C4—C3—H3	120.00
C3—C4—C5	120.8 (3)	C4—C5—H5	121.00
Br2—C4—C3	119.3 (3)	C6—C5—H5	121.00
C4—C5—C6	118.4 (3)	C8—C9—H9	120.00
Br3—C6—C5	117.1 (2)	C10—C9—H9	120.00
C1—C6—C5	122.5 (3)	C9—C10—H10	118.00
Br3—C6—C1	120.4 (3)	C11—C10—H10	118.00
N2—C7—C12	114.8 (3)	C12—C13—H13	120.00
C8—C7—C12	120.0 (3)	C14—C13—H13	120.00
N2—C7—C8	125.2 (3)	C13—C14—H14	120.00
O1—C8—C9	118.2 (4)	C15—C14—H14	120.00
C7—C8—C9	119.3 (4)	C14—C15—H15	120.00
O1—C8—C7	122.5 (3)	C16—C15—H15	120.00
C8—C9—C10	120.3 (4)	C11—C16—H16	120.00
C9—C10—C11	123.2 (4)	C15—C16—H16	120.00
C10—C11—C16	122.5 (4)		
C1—N1—N2—C7	179.2 (3)	C12—C7—C8—O1	-179.7 (4)
N2—N1—C1—C2	-38.6 (5)	C12—C7—C8—C9	0.6 (6)
N2—N1—C1—C6	144.9 (4)	N2—C7—C12—C11	-178.7 (3)
N1—N2—C7—C8	4.8 (6)	N2—C7—C12—C13	3.3 (6)
N1—N2—C7—C12	-178.4 (3)	C8—C7—C12—C11	-1.6 (6)
N1—C1—C2—Br1	-3.5 (5)	C8—C7—C12—C13	-179.6 (4)

N1—C1—C2—C3	-179.8 (4)	O1—C8—C9—C10	-178.5 (4)
C6—C1—C2—Br1	173.1 (3)	C7—C8—C9—C10	1.3 (7)
C6—C1—C2—C3	-3.2 (6)	C8—C9—C10—C11	-2.1 (7)
N1—C1—C6—Br3	-0.1 (5)	C9—C10—C11—C12	1.0 (6)
N1—C1—C6—C5	179.9 (4)	C9—C10—C11—C16	-179.2 (4)
C2—C1—C6—Br3	-176.9 (3)	C10—C11—C12—C7	0.9 (6)
C2—C1—C6—C5	3.1 (6)	C10—C11—C12—C13	179.0 (4)
Br1—C2—C3—C4	-175.1 (3)	C16—C11—C12—C7	-179.0 (4)
C1—C2—C3—C4	1.4 (6)	C16—C11—C12—C13	-0.9 (6)
C2—C3—C4—Br2	179.9 (3)	C10—C11—C16—C15	-179.6 (4)
C2—C3—C4—C5	0.7 (6)	C12—C11—C16—C15	0.2 (7)
Br2—C4—C5—C6	179.9 (3)	C7—C12—C13—C14	178.7 (4)
C3—C4—C5—C6	-0.8 (6)	C11—C12—C13—C14	0.7 (6)
C4—C5—C6—Br3	178.9 (3)	C12—C13—C14—C15	0.2 (7)
C4—C5—C6—C1	-1.1 (6)	C13—C14—C15—C16	-0.9 (7)
N2—C7—C8—O1	-3.0 (7)	C14—C15—C16—C11	0.7 (7)
N2—C7—C8—C9	177.3 (4)		

Hydrogen-bond geometry (Å, °)

<i>D</i> —H... <i>A</i>	<i>D</i> —H	H... <i>A</i>	<i>D</i> ... <i>A</i>	<i>D</i> —H... <i>A</i>
O1—H1...N1	0.82	1.85	2.561 (4)	144