

2-(3-Cyano-4-methyl-5,5-diphenyl-5H-furan-2-ylidene)malononitrile

M. Delower H. Bhuiyan,^a Graeme J. Gainsford,^{a*} Andrew Kay^a and Jack Anderson^b

^aCallaghan Innovation Research Limited, PO Box 31-310, Lower Hutt, New Zealand, and ^bIndustrial Research Limited, PO Box 31-310, Lower Hutt, New Zealand
Correspondence e-mail: graeme.gainsford@callaghaninnovation.govt.nz

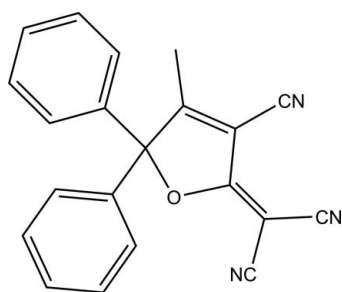
Received 20 July 2013; accepted 26 July 2013

Key indicators: single-crystal X-ray study; $T = 123$ K; mean $\sigma(\text{C}-\text{C}) = 0.002$ Å; R factor = 0.045; wR factor = 0.119; data-to-parameter ratio = 21.9.

The title compound, $\text{C}_{21}\text{H}_{13}\text{N}_3\text{O}$, crystallizes with two independent molecules with similar conformations per asymmetric unit. The dihydrofuran rings are essentially planar with maximum deviations of 0.017 (1) and 0.006 (1) Å for the O atoms. The dihedral angles between the dihydrofuran ring and the attached phenyl rings are 79.90 (6) and 82.07 (6)° in one molecule and 79.36 (6) and 72.26 (6)° in the other. In the crystal, the molecules are linked by weak $\text{C}-\text{H}\cdots\pi$ and $\text{C}-\text{H}\cdots\text{N}$ interactions similar to those in other closely related crystals. The replacement of appended methyl by phenyl groups has not significantly affected the dihydrofuran ring structure or the crystal packing interactions.

Related literature

For general background to NLO chromophores, see: Smith *et al.* (2006, 2010); Carey *et al.* (2002); Kay *et al.* (2004). For details of the synthesis, see: Anderson (2009). For related structures, see: Anderson (2009); Gainsford *et al.* (2011); Li *et al.* (2005); Liao *et al.* (2005). For geometric analysis of structures, see: Spek (2009). For a description of the Cambridge Structural Database, see: Allen (2002).



Experimental

Crystal data

| | |
|--|-----------------------------------|
| $\text{C}_{21}\text{H}_{13}\text{N}_3\text{O}$ | $\gamma = 79.233$ (2)° |
| $M_r = 323.34$ | $V = 1634.07$ (9) Å ³ |
| Triclinic, $P\bar{1}$ | $Z = 4$ |
| $a = 9.2308$ (3) Å | Mo $K\alpha$ radiation |
| $b = 12.5991$ (4) Å | $\mu = 0.08$ mm ⁻¹ |
| $c = 14.3043$ (4) Å | $T = 123$ K |
| $\alpha = 89.954$ (2)° | $0.36 \times 0.32 \times 0.29$ mm |
| $\beta = 89.052$ (2)° | |

Data collection

| | |
|--|--|
| Bruker APEXII CCD diffractometer | 45305 measured reflections |
| Absorption correction: multi-scan (SADABS; Bruker, 2005) | 9930 independent reflections |
| $T_{\min} = 0.651$, $T_{\max} = 0.746$ | 7329 reflections with $I > 2\sigma(I)$ |
| | $R_{\text{int}} = 0.042$ |

Refinement

| | |
|---------------------------------|---|
| $R[F^2 > 2\sigma(F^2)] = 0.045$ | 453 parameters |
| $wR(F^2) = 0.119$ | H-atom parameters constrained |
| $S = 1.04$ | $\Delta\rho_{\text{max}} = 0.35$ e Å ⁻³ |
| 9930 reflections | $\Delta\rho_{\text{min}} = -0.24$ e Å ⁻³ |

Table 1

Hydrogen-bond geometry (Å, °).

Cg1 is the centroid of the C10–C15 phenyl ring

| $D-\text{H}\cdots A$ | $D-\text{H}$ | $\text{H}\cdots A$ | $D\cdots A$ | $D-\text{H}\cdots A$ |
|---|--------------|--------------------|-------------|----------------------|
| $\text{C}20'-\text{H}20'\cdots\text{C}g1^1$ | 0.95 | 2.69 | 3.4041 (14) | 133 |
| $\text{C}9-\text{H}9B\cdots\text{N}3'$ | 0.98 | 2.70 | 3.4560 (14) | 134 |

Symmetry code: (i) $-x + 1, -y + 1, -z$.

Data collection: APEX2 (Bruker, 2005); cell refinement: SAINT (Bruker, 2005); data reduction: SAINT; program(s) used to solve structure: SHELXS97 (Sheldrick, 2008); program(s) used to refine structure: SHELXL97 (Sheldrick, 2008); molecular graphics: ORTEP-3 for Windows (Farrugia, 2012) and Mercury (Macrae *et al.*, 2006); software used to prepare material for publication: SHELXL97 and PLATON (Spek, 2009).

This work was supported by a New Zealand Foundation for Research Science and Technology grant (contract No. C08X0704). We thank Dr C. Fitchett of the University of Canterbury, New Zealand, for his assistance.

Supplementary data and figures for this paper are available from the IUCr electronic archives (Reference: RZ5081).

References

- Allen, F. H. (2002). *Acta Cryst.* **B58**, 380–388.
 Anderson, J. (2009). BSc (Hons.) project report. Victoria University of Wellington, New Zealand.
 Bruker (2005). APEX2, SAINT and SADABS. Bruker AXS Inc., Madison, Wisconsin, USA.
 Carey, J. J., Bailey, R. T., Pugh, D., Sherwood, J. N., Cruikshank, F. R. & Wynne, K. (2002). *Appl. Phys. Lett.* **81**, 4335–4337.
 Farrugia, L. J. (2012). *J. Appl. Cryst.* **45**, 849–854.
 Gainsford, G. J., Anderson, J., Bhuiyan, M. D. H. & Kay, A. J. (2011). *Acta Cryst.* **E67**, o3046–o3047.
 Kay, A. J., Woolhouse, A. D., Zhao, Y. & Clays, K. (2004). *J. Mater. Chem.* **14**, 1321–1330.

- Li, S.-Y., Song, Y.-Y., You, Z.-L., Wen, Y.-W. & Qin, J.-G. (2005). *Acta Cryst. E* **61**, o2093–o2095.
- Liao, Y., Eichinger, B. E., Firestone, K. A., Haller, M., Luo, J., Kaminsky, W., Benedict, J. B., Reid, P. J., Jen, A. K.-Y., Dalton, L. R. & Robinson, B. H. (2005). *J. Am. Chem. Soc.* **127**, 2758–2766.
- Macrae, C. F., Edgington, P. R., McCabe, P., Pidcock, E., Shields, G. P., Taylor, R., Towler, M. & van de Streek, J. (2006). *J. Appl. Cryst.* **39**, 453–457.
- Sheldrick, G. M. (2008). *Acta Cryst.* **A64**, 112–122.
- Smith, G. J., Dunford, C. L., Kay, A. J. & Woolhouse, A. D. (2006). *J. Photochem. Photobiol. A*, **179**, 237–242.
- Smith, G. J., Middleton, A. P., Clarke, D. J., Teshome, A., Kay, A. J., Bhuiyan, M. D. H., Asselberghs, I. & Clay, K. (2010). *Opt. Mater.* **32**, 1237–1243.
- Spek, A. L. (2009). *Acta Cryst.* **D65**, 148–155.

supporting information

Acta Cryst. (2013). E69, o1365–o1366 [doi:10.1107/S1600536813020849]

2-(3-Cyano-4-methyl-5,5-diphenyl-5H-furan-2-ylidene)malononitrile

M. Delower H. Bhuiyan, Graeme J. Gainsford, Andrew Kay and Jack Anderson

S1. Comment

Organic non-linear optical (NLO) chromophores consist of donor and acceptor units connecting through π -conjugation. To realise a strong NLO response, chromophores need to be in uniform alignment. Unfortunately organic chromophores have a tendency to aggregate rather than align due to their highly polar nature (Smith *et al.*, 2006). These push-pull chromophores can also exist as two rotameric (*cis* and *trans*) forms (Kay *et al.*, 2004). As a result, these chromophores are difficult to crystallize, therefore they may not be able to be used in devices that require crystals such as terahertz wave emitters (Carey *et al.*, 2002). Consequently it is of interest to design and synthesize molecules which will be much less prone to aggregation and isomerization. It has been found that through changing the shape of the chromophore molecules, aggregation can be minimized. The most successful strategy has been to add bulky pendant groups onto the donor end (Smith *et al.*, 2010). We have reported our previous attempts with two benzyloxyphenyl groups (Gainsford *et al.*, 2011; Anderson, 2009) and report here the structure of a related acceptor unit with two phenyl groups.

The asymmetric unit of the title compound (I) contains two independent, nearly identical, 2-(3-cyano-4-methyl-5,5-diphenyl-5H-furan-2-ylidene)malononitrile molecules (Fig. 1). The second molecule (1') has identical labels with an appended prime (*e.g.* C10 and C10'); the r.m.s. bond and angle fits are 0.003 Å and 0.48° (Spek, 2009). The five-membered dihydrofuran rings (atoms C4–C7/O1, hereafter plane 1) are planar (maximum deviation 0.017 (1) Å for O1) with the appended cyano groups almost coplanar (maximum deviation 0.093 (1) Å for N1). The 5,5-dimethyl adduct (Li *et al.*, 2005; CSD refcode PANLUM), in which plane 1 was constrained to a crystallographic mirror plane, has identical ring dimensions with the exception of the C4–C5 bond which is just significantly longer here (by 0.013 (4) Å). This marginally longer distance seems the exception and is not observed in related molecules [Allen (2002); CSD version 5.34 with May 2013 updates: *e.g.* KAJCII and KATCEE, 1.518 and 1.536, 1.537 Å respectively (Liao *et al.*, 2005); YAHKUP 1.512 Å (Gainsford *et al.*, 2011)].

The only significant conformational differences between the two molecules concern the interplanar angles between the phenyl rings and plane 1, corresponding to the different torsion angles (C4–C5–C10–C15 = -21.21 (15)°; O1–C5–C16–C17 = -30.62 (13)°; C4'–C5'–C10'–C15' = -30.22 (14)°; O1'–C5'–C16'–C17' = -21.91 (15)°). The plane 1 angle to phenyl plane (C10–C15) is 79.90 (6) and 82.07 (6)° for molecules 1 and 1' while the other phenyl plane (C16–C21) makes interplane angle of 79.36 (6) and 72.26 (6)° for molecules 1 and 1'.

Lattice binding is provided mainly by one non-classical C–H \cdots π interaction (Table 1, Figure 2 where C_{g1} is the centroid of the C10–C15 ring), the dominant binding interaction type in related compound YAHKUP (Gainsford *et al.*, 2011). As in PANLUM, a weak methylC–H \cdots N(cyano) interaction is observed. Other C–H \cdots N(cyano), C–H \cdots π and cyano \cdots cyano very weak interactions even closer to van der Waal's contact distances are also present. Overall, the effect of the phenyl for methyl replacement on C5 has given insignificant molecular structural and crystal packing alignment affects.

S2. Experimental

The title compound was prepared by the condensation of 1-hydroxy-1,1-diphenylpropan-2-one with 4 equivalents of malononitrile over 10 days as described in Anderson (2009). A small portion was recrystallized in dichloromethane and acetone (1:1) mixture to give colourless crystals. M.p. 223 °C. Found: C, 77.70; H, 3.91; N, 13.06, $C_{21}H_{13}N_3O$ requires: C, 78.00; H, 4.05; N, 13.00%. Found: M^+ m/z 323.1059 $C_{21}H_{13}N_3O$ requires: M^+ m/z 323.1056 (Δ 0.9 p.p.m.). 1H NMR– (300 MHz, $CDCl_3$) δ (p.p.m.): 2.41 (s, 3H), 7.18 (d, J 9.6 Hz, 4H), 7.51–7.47 (m, 6H). ^{13}C NMR– (75 MHz, $CDCl_3$) δ (p.p.m.): 16.2 (CH_3), 59.5 (C_O), 105.6 (C_O), 106.4 (C_O), 109.0 (C_O), 110.2 (C_O), 110.7 (C_O), 127.3 (CH), 129.5 (CH), 130.6 (CH), 134.9 (C_O), 175.1 (C_O), 180.2 (C_O).

S3. Refinement

All carbon-bound H atoms were constrained to their expected geometries [$C-H$ 0.95, 0.98 Å] and refined with U_{iso} 1.2 times the U_{eq} of their parent atom. All other non-hydrogen atoms were refined with anisotropic thermal parameters.

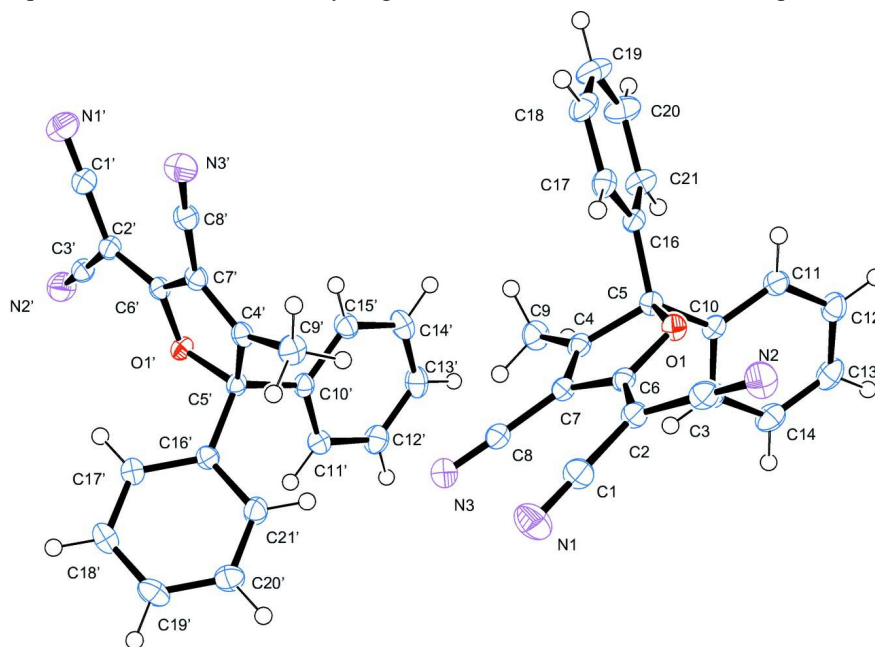


Figure 1

Content of the asymmetric unit of the title compound with displacement ellipsoids drawn at the 50% probability level. The partially obscured atom C15 is not labelled.

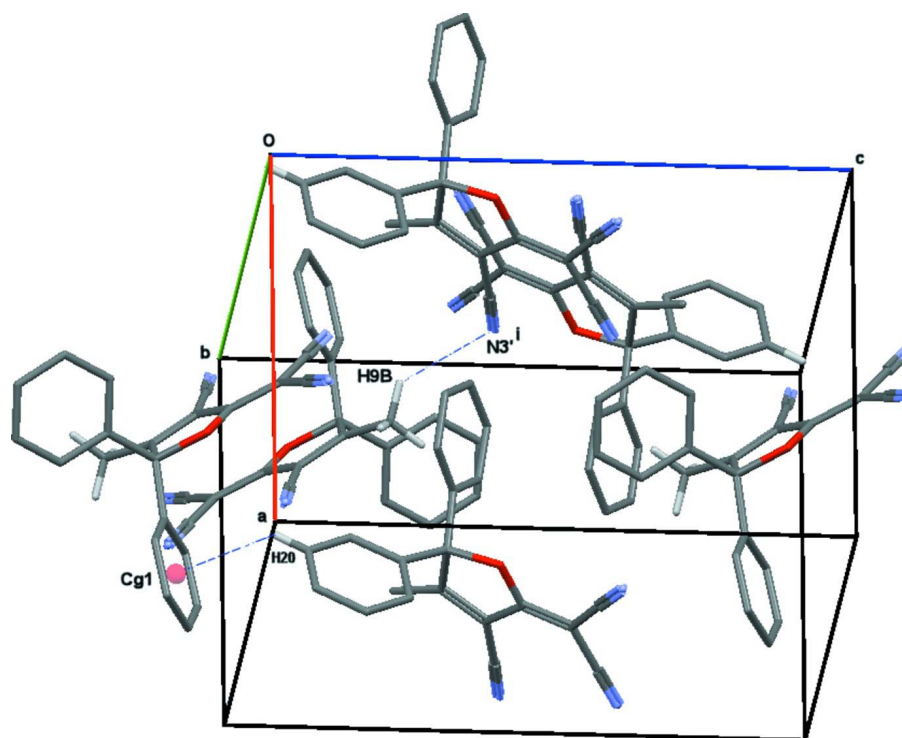


Figure 2

Packing diagram of the title compound with one C–H \cdots π and C(methyl)–H \cdots N(cyano) interaction shown as dashed blue lines. H atoms not involved in intermolecular contacts are excluded except on methyl C9. Cg1 is the centroid of the phenyl ring (C10–C15) at symmetry 1-*x*, 1-*y*, -*z*. Symmetry code: (i) -1+*x*, *y*, *z*.

2-(3-Cyano-4-methyl-5,5-diphenyl-5*H*-furan-2-ylidene)malononitrile

Crystal data

C₂₁H₁₃N₃O

M_r = 323.34

Triclinic, *P*1

Hall symbol: -*P* 1

a = 9.2308 (3) Å

b = 12.5991 (4) Å

c = 14.3043 (4) Å

α = 89.954 (2)°

β = 89.052 (2)°

γ = 79.233 (2)°

V = 1634.07 (9) Å³

Z = 4

F(000) = 672

D_x = 1.314 Mg m⁻³

Mo *K* α radiation, λ = 0.71073 Å

Cell parameters from 9027 reflections

θ = 2.2–30.5°

μ = 0.08 mm⁻¹

T = 123 K

Block, colourless

0.36 × 0.32 × 0.29 mm

Data collection

Bruker APEXII CCD
diffractometer

Radiation source: fine-focus sealed tube

Graphite monochromator

Detector resolution: 8.333 pixels mm⁻¹

φ and ω scans

Absorption correction: multi-scan

(*SADABS*; Bruker, 2005)

T_{min} = 0.651, *T_{max}* = 0.746

45305 measured reflections

9930 independent reflections

7329 reflections with *I* > 2 σ (*I*)

R_{int} = 0.042

θ_{\max} = 30.7°, θ_{\min} = 1.4°

h = -13→13

k = -18→18

l = -20→20

Refinement

Refinement on F^2
 Least-squares matrix: full
 $R[F^2 > 2\sigma(F^2)] = 0.045$
 $wR(F^2) = 0.119$
 $S = 1.04$
 9930 reflections
 453 parameters
 0 restraints
 Primary atom site location: structure-invariant
 direct methods

Secondary atom site location: difference Fourier
 map
 Hydrogen site location: inferred from
 neighbouring sites
 H-atom parameters constrained
 $w = 1/[\sigma^2(F_o^2) + (0.0512P)^2 + 0.3811P]$
 where $P = (F_o^2 + 2F_c^2)/3$
 $(\Delta/\sigma)_{\max} < 0.001$
 $\Delta\rho_{\max} = 0.35 \text{ e } \text{\AA}^{-3}$
 $\Delta\rho_{\min} = -0.24 \text{ e } \text{\AA}^{-3}$

Special details

Geometry. All e.s.d.'s (except the e.s.d. in the dihedral angle between two l.s. planes) are estimated using the full covariance matrix. The cell e.s.d.'s are taken into account individually in the estimation of e.s.d.'s in distances, angles and torsion angles; correlations between e.s.d.'s in cell parameters are only used when they are defined by crystal symmetry. An approximate (isotropic) treatment of cell e.s.d.'s is used for estimating e.s.d.'s involving l.s. planes.

Refinement. Refinement of F^2 against ALL reflections. The weighted R -factor wR and goodness of fit S are based on F^2 , conventional R -factors R are based on F , with F set to zero for negative F^2 . The threshold expression of $F^2 > \sigma(F^2)$ is used only for calculating R -factors(gt) *etc.* and is not relevant to the choice of reflections for refinement. R -factors based on F^2 are statistically about twice as large as those based on F , and R -factors based on ALL data will be even larger.

Fractional atomic coordinates and isotropic or equivalent isotropic displacement parameters (\AA^2)

| | <i>x</i> | <i>y</i> | <i>z</i> | $U_{\text{iso}}^*/U_{\text{eq}}$ |
|-----|---------------|--------------|--------------|----------------------------------|
| O1 | 0.34806 (9) | 0.80434 (6) | 0.09747 (5) | 0.01913 (17) |
| N1 | 0.71127 (14) | 0.64480 (10) | -0.12562 (9) | 0.0387 (3) |
| N2 | 0.41086 (13) | 0.95957 (10) | -0.09834 (8) | 0.0315 (3) |
| N3 | 0.68541 (13) | 0.46791 (10) | 0.06030 (8) | 0.0320 (3) |
| C1 | 0.62087 (14) | 0.70061 (10) | -0.08395 (9) | 0.0255 (3) |
| C2 | 0.50822 (13) | 0.77028 (10) | -0.03197 (8) | 0.0204 (2) |
| C3 | 0.45366 (13) | 0.87575 (10) | -0.06807 (8) | 0.0228 (2) |
| C4 | 0.40415 (12) | 0.64052 (9) | 0.17749 (8) | 0.0194 (2) |
| C5 | 0.30203 (12) | 0.74917 (9) | 0.18178 (8) | 0.0176 (2) |
| C6 | 0.45279 (12) | 0.73785 (9) | 0.04999 (8) | 0.0183 (2) |
| C7 | 0.49044 (12) | 0.63614 (9) | 0.10052 (8) | 0.0193 (2) |
| C8 | 0.60060 (13) | 0.54476 (10) | 0.07557 (8) | 0.0225 (2) |
| C9 | 0.40783 (15) | 0.55820 (10) | 0.25144 (9) | 0.0269 (3) |
| H9A | 0.4637 | 0.4889 | 0.2288 | 0.032* |
| H9B | 0.3069 | 0.5502 | 0.2677 | 0.032* |
| H9C | 0.4553 | 0.5808 | 0.3069 | 0.032* |
| C10 | 0.14038 (12) | 0.74436 (9) | 0.16821 (8) | 0.0188 (2) |
| C11 | 0.03222 (13) | 0.83316 (10) | 0.19229 (8) | 0.0225 (2) |
| H11 | 0.0589 | 0.8940 | 0.2219 | 0.027* |
| C12 | -0.11448 (14) | 0.83266 (11) | 0.17303 (9) | 0.0278 (3) |
| H12 | -0.1884 | 0.8930 | 0.1899 | 0.033* |
| C13 | -0.15301 (14) | 0.74430 (12) | 0.12926 (9) | 0.0301 (3) |
| H13 | -0.2535 | 0.7441 | 0.1162 | 0.036* |
| C14 | -0.04624 (15) | 0.65645 (11) | 0.10437 (9) | 0.0288 (3) |
| H14 | -0.0733 | 0.5963 | 0.0738 | 0.035* |

| | | | | |
|------|--------------|--------------|--------------|--------------|
| C15 | 0.10062 (14) | 0.65600 (10) | 0.12400 (9) | 0.0238 (2) |
| H15 | 0.1740 | 0.5953 | 0.1072 | 0.029* |
| C16 | 0.33659 (12) | 0.80840 (9) | 0.26874 (8) | 0.0186 (2) |
| C17 | 0.45540 (13) | 0.86160 (10) | 0.26897 (9) | 0.0226 (2) |
| H17 | 0.5119 | 0.8654 | 0.2134 | 0.027* |
| C18 | 0.49144 (15) | 0.90922 (11) | 0.35082 (9) | 0.0287 (3) |
| H18 | 0.5728 | 0.9456 | 0.3512 | 0.034* |
| C19 | 0.40914 (17) | 0.90379 (12) | 0.43177 (9) | 0.0337 (3) |
| H19 | 0.4334 | 0.9371 | 0.4875 | 0.040* |
| C20 | 0.29189 (17) | 0.85014 (12) | 0.43188 (9) | 0.0329 (3) |
| H20 | 0.2352 | 0.8468 | 0.4875 | 0.040* |
| C21 | 0.25681 (15) | 0.80120 (10) | 0.35100 (8) | 0.0255 (3) |
| H21 | 0.1778 | 0.7625 | 0.3517 | 0.031* |
| O1' | 0.98981 (9) | 0.20107 (6) | 0.40488 (5) | 0.01929 (17) |
| N1' | 1.26942 (15) | 0.36533 (11) | 0.61930 (9) | 0.0397 (3) |
| N2' | 1.13037 (14) | 0.05064 (10) | 0.60095 (8) | 0.0346 (3) |
| N3' | 1.16038 (13) | 0.53580 (9) | 0.43102 (8) | 0.0302 (2) |
| C1' | 1.20774 (14) | 0.30913 (11) | 0.57926 (9) | 0.0265 (3) |
| C2' | 1.13161 (13) | 0.23860 (10) | 0.53017 (8) | 0.0214 (2) |
| C3' | 1.12990 (14) | 0.13375 (10) | 0.56895 (8) | 0.0236 (2) |
| C4' | 0.97057 (12) | 0.35981 (9) | 0.31831 (8) | 0.0192 (2) |
| C5' | 0.92300 (12) | 0.25132 (9) | 0.31831 (8) | 0.0181 (2) |
| C6' | 1.06105 (12) | 0.26850 (9) | 0.44854 (8) | 0.0183 (2) |
| C7' | 1.05045 (12) | 0.36764 (9) | 0.39479 (8) | 0.0194 (2) |
| C8' | 1.11373 (13) | 0.45944 (10) | 0.41679 (8) | 0.0220 (2) |
| C9' | 0.93503 (15) | 0.43960 (10) | 0.24239 (9) | 0.0262 (3) |
| H9'A | 0.9634 | 0.5077 | 0.2607 | 0.031* |
| H9'B | 0.8289 | 0.4520 | 0.2309 | 0.031* |
| H9'C | 0.9893 | 0.4120 | 0.1853 | 0.031* |
| C10' | 0.75678 (12) | 0.26066 (9) | 0.33075 (8) | 0.0187 (2) |
| C11' | 0.68589 (13) | 0.18118 (10) | 0.29681 (9) | 0.0231 (2) |
| H11' | 0.7401 | 0.1214 | 0.2630 | 0.028* |
| C12' | 0.53511 (14) | 0.18933 (11) | 0.31243 (9) | 0.0276 (3) |
| H12' | 0.4859 | 0.1359 | 0.2879 | 0.033* |
| C13' | 0.45660 (14) | 0.27472 (11) | 0.36351 (10) | 0.0290 (3) |
| H13' | 0.3537 | 0.2798 | 0.3741 | 0.035* |
| C14' | 0.52747 (14) | 0.35269 (11) | 0.39920 (10) | 0.0291 (3) |
| H14' | 0.4737 | 0.4106 | 0.4353 | 0.035* |
| C15' | 0.67724 (14) | 0.34638 (10) | 0.38225 (9) | 0.0241 (2) |
| H15' | 0.7256 | 0.4007 | 0.4059 | 0.029* |
| C16' | 0.99343 (13) | 0.18644 (9) | 0.23453 (8) | 0.0189 (2) |
| C17' | 1.13164 (13) | 0.12020 (9) | 0.24063 (9) | 0.0217 (2) |
| H17' | 1.1791 | 0.1096 | 0.2992 | 0.026* |
| C18' | 1.19993 (14) | 0.06974 (10) | 0.16117 (9) | 0.0262 (3) |
| H18' | 1.2949 | 0.0254 | 0.1654 | 0.031* |
| C19' | 1.13090 (16) | 0.08335 (10) | 0.07570 (9) | 0.0288 (3) |
| H19' | 1.1776 | 0.0478 | 0.0216 | 0.035* |
| C20' | 0.99357 (15) | 0.14899 (11) | 0.06954 (9) | 0.0287 (3) |

| | | | | |
|------|--------------|--------------|-------------|------------|
| H20' | 0.9458 | 0.1584 | 0.0110 | 0.034* |
| C21' | 0.92545 (14) | 0.20087 (10) | 0.14786 (8) | 0.0252 (3) |
| H21' | 0.8317 | 0.2467 | 0.1428 | 0.030* |

Atomic displacement parameters (Å²)

| | U^{11} | U^{22} | U^{33} | U^{12} | U^{13} | U^{23} |
|------|------------|------------|------------|-------------|-------------|-------------|
| O1 | 0.0182 (4) | 0.0211 (4) | 0.0176 (4) | -0.0025 (3) | 0.0024 (3) | 0.0021 (3) |
| N1 | 0.0364 (7) | 0.0400 (7) | 0.0369 (7) | -0.0012 (6) | 0.0125 (5) | -0.0044 (6) |
| N2 | 0.0309 (6) | 0.0339 (6) | 0.0282 (6) | -0.0025 (5) | 0.0041 (5) | 0.0049 (5) |
| N3 | 0.0288 (6) | 0.0323 (6) | 0.0317 (6) | 0.0029 (5) | -0.0057 (5) | -0.0042 (5) |
| C1 | 0.0244 (6) | 0.0287 (6) | 0.0235 (6) | -0.0057 (5) | 0.0027 (5) | 0.0005 (5) |
| C2 | 0.0182 (5) | 0.0246 (6) | 0.0184 (5) | -0.0042 (4) | 0.0005 (4) | -0.0005 (4) |
| C3 | 0.0206 (6) | 0.0305 (6) | 0.0177 (5) | -0.0060 (5) | 0.0025 (4) | -0.0003 (5) |
| C4 | 0.0180 (5) | 0.0202 (5) | 0.0208 (5) | -0.0057 (4) | -0.0035 (4) | 0.0002 (4) |
| C5 | 0.0172 (5) | 0.0196 (5) | 0.0160 (5) | -0.0039 (4) | 0.0017 (4) | 0.0020 (4) |
| C6 | 0.0153 (5) | 0.0216 (5) | 0.0184 (5) | -0.0045 (4) | -0.0021 (4) | -0.0018 (4) |
| C7 | 0.0171 (5) | 0.0206 (5) | 0.0204 (5) | -0.0039 (4) | -0.0027 (4) | -0.0016 (4) |
| C8 | 0.0193 (5) | 0.0258 (6) | 0.0225 (6) | -0.0045 (5) | -0.0035 (4) | -0.0022 (5) |
| C9 | 0.0306 (7) | 0.0238 (6) | 0.0258 (6) | -0.0040 (5) | -0.0005 (5) | 0.0060 (5) |
| C10 | 0.0170 (5) | 0.0241 (5) | 0.0161 (5) | -0.0055 (4) | -0.0003 (4) | 0.0021 (4) |
| C11 | 0.0203 (5) | 0.0264 (6) | 0.0211 (5) | -0.0049 (5) | 0.0002 (4) | -0.0015 (5) |
| C12 | 0.0188 (6) | 0.0365 (7) | 0.0265 (6) | -0.0013 (5) | 0.0000 (5) | 0.0007 (5) |
| C13 | 0.0187 (6) | 0.0440 (8) | 0.0297 (6) | -0.0110 (5) | -0.0043 (5) | 0.0040 (6) |
| C14 | 0.0281 (6) | 0.0318 (7) | 0.0301 (6) | -0.0146 (5) | -0.0055 (5) | 0.0011 (5) |
| C15 | 0.0234 (6) | 0.0238 (6) | 0.0254 (6) | -0.0070 (5) | -0.0015 (5) | 0.0000 (5) |
| C16 | 0.0180 (5) | 0.0197 (5) | 0.0180 (5) | -0.0032 (4) | -0.0026 (4) | 0.0010 (4) |
| C17 | 0.0188 (5) | 0.0234 (6) | 0.0259 (6) | -0.0047 (4) | -0.0024 (5) | 0.0033 (5) |
| C18 | 0.0287 (6) | 0.0274 (6) | 0.0330 (7) | -0.0121 (5) | -0.0109 (5) | 0.0032 (5) |
| C19 | 0.0466 (8) | 0.0355 (7) | 0.0231 (6) | -0.0175 (6) | -0.0107 (6) | -0.0007 (5) |
| C20 | 0.0451 (8) | 0.0385 (7) | 0.0185 (6) | -0.0164 (6) | 0.0006 (6) | 0.0005 (5) |
| C21 | 0.0287 (6) | 0.0306 (6) | 0.0204 (5) | -0.0135 (5) | -0.0011 (5) | 0.0015 (5) |
| O1' | 0.0198 (4) | 0.0208 (4) | 0.0176 (4) | -0.0045 (3) | -0.0035 (3) | 0.0023 (3) |
| N1' | 0.0412 (7) | 0.0389 (7) | 0.0397 (7) | -0.0079 (6) | -0.0131 (6) | -0.0056 (6) |
| N2' | 0.0397 (7) | 0.0325 (6) | 0.0303 (6) | -0.0033 (5) | -0.0062 (5) | 0.0042 (5) |
| N3' | 0.0302 (6) | 0.0310 (6) | 0.0312 (6) | -0.0109 (5) | 0.0057 (5) | -0.0038 (5) |
| C1' | 0.0250 (6) | 0.0289 (6) | 0.0243 (6) | -0.0013 (5) | -0.0044 (5) | -0.0013 (5) |
| C2' | 0.0192 (5) | 0.0246 (6) | 0.0195 (5) | -0.0020 (4) | -0.0017 (4) | -0.0006 (4) |
| C3' | 0.0229 (6) | 0.0276 (6) | 0.0184 (5) | -0.0002 (5) | -0.0034 (5) | -0.0010 (5) |
| C4' | 0.0154 (5) | 0.0209 (5) | 0.0203 (5) | -0.0016 (4) | 0.0033 (4) | 0.0007 (4) |
| C5' | 0.0175 (5) | 0.0201 (5) | 0.0158 (5) | -0.0011 (4) | -0.0022 (4) | 0.0023 (4) |
| C6' | 0.0141 (5) | 0.0214 (5) | 0.0188 (5) | -0.0019 (4) | 0.0020 (4) | -0.0018 (4) |
| C7' | 0.0161 (5) | 0.0213 (5) | 0.0208 (5) | -0.0036 (4) | 0.0030 (4) | -0.0005 (4) |
| C8' | 0.0188 (5) | 0.0251 (6) | 0.0219 (6) | -0.0042 (5) | 0.0032 (4) | -0.0009 (5) |
| C9' | 0.0293 (6) | 0.0250 (6) | 0.0241 (6) | -0.0046 (5) | -0.0004 (5) | 0.0061 (5) |
| C10' | 0.0167 (5) | 0.0215 (5) | 0.0172 (5) | -0.0015 (4) | -0.0001 (4) | 0.0031 (4) |
| C11' | 0.0214 (6) | 0.0240 (6) | 0.0234 (6) | -0.0030 (5) | 0.0003 (5) | -0.0010 (5) |
| C12' | 0.0221 (6) | 0.0299 (6) | 0.0325 (7) | -0.0087 (5) | -0.0021 (5) | 0.0027 (5) |

| | | | | | | |
|------|------------|------------|------------|-------------|-------------|-------------|
| C13' | 0.0177 (6) | 0.0339 (7) | 0.0344 (7) | -0.0025 (5) | 0.0028 (5) | 0.0059 (6) |
| C14' | 0.0225 (6) | 0.0284 (6) | 0.0335 (7) | 0.0019 (5) | 0.0060 (5) | 0.0001 (5) |
| C15' | 0.0215 (6) | 0.0234 (6) | 0.0268 (6) | -0.0029 (5) | 0.0013 (5) | -0.0013 (5) |
| C16' | 0.0185 (5) | 0.0196 (5) | 0.0187 (5) | -0.0037 (4) | 0.0012 (4) | 0.0004 (4) |
| C17' | 0.0196 (5) | 0.0208 (5) | 0.0244 (6) | -0.0029 (4) | 0.0004 (4) | 0.0020 (5) |
| C18' | 0.0235 (6) | 0.0215 (6) | 0.0313 (6) | 0.0008 (5) | 0.0060 (5) | 0.0021 (5) |
| C19' | 0.0347 (7) | 0.0257 (6) | 0.0245 (6) | -0.0023 (5) | 0.0103 (5) | -0.0019 (5) |
| C20' | 0.0331 (7) | 0.0337 (7) | 0.0183 (5) | -0.0035 (6) | 0.0014 (5) | 0.0000 (5) |
| C21' | 0.0220 (6) | 0.0308 (6) | 0.0208 (6) | 0.0002 (5) | -0.0012 (5) | 0.0022 (5) |

Geometric parameters (Å, °)

| | | | |
|---------|-------------|-----------|-------------|
| O1—C6 | 1.3320 (14) | O1'—C6' | 1.3295 (14) |
| O1—C5 | 1.4866 (13) | O1'—C5' | 1.4808 (12) |
| N1—C1 | 1.1450 (17) | N1'—C1' | 1.1469 (18) |
| N2—C3 | 1.1437 (16) | N2'—C3' | 1.1417 (17) |
| N3—C8 | 1.1443 (16) | N3'—C8' | 1.1448 (16) |
| C1—C2 | 1.4280 (18) | C1'—C2' | 1.4239 (18) |
| C2—C6 | 1.3642 (16) | C2'—C6' | 1.3647 (15) |
| C2—C3 | 1.4295 (16) | C2'—C3' | 1.4351 (17) |
| C4—C7 | 1.3432 (17) | C4'—C7' | 1.3432 (16) |
| C4—C9 | 1.4772 (16) | C4'—C9' | 1.4779 (15) |
| C4—C5 | 1.5107 (16) | C4'—C5' | 1.5118 (16) |
| C5—C16 | 1.5197 (16) | C5'—C16' | 1.5180 (16) |
| C5—C10 | 1.5202 (16) | C5'—C10' | 1.5243 (15) |
| C6—C7 | 1.4580 (15) | C6'—C7' | 1.4547 (15) |
| C7—C8 | 1.4277 (17) | C7'—C8' | 1.4273 (17) |
| C9—H9A | 0.9800 | C9'—H9'A | 0.9800 |
| C9—H9B | 0.9800 | C9'—H9'B | 0.9800 |
| C9—H9C | 0.9800 | C9'—H9'C | 0.9800 |
| C10—C15 | 1.3912 (17) | C10'—C11' | 1.3866 (17) |
| C10—C11 | 1.3926 (17) | C10'—C15' | 1.3911 (17) |
| C11—C12 | 1.3875 (17) | C11'—C12' | 1.3907 (17) |
| C11—H11 | 0.9500 | C11'—H11' | 0.9500 |
| C12—C13 | 1.384 (2) | C12'—C13' | 1.3816 (19) |
| C12—H12 | 0.9500 | C12'—H12' | 0.9500 |
| C13—C14 | 1.380 (2) | C13'—C14' | 1.380 (2) |
| C13—H13 | 0.9500 | C13'—H13' | 0.9500 |
| C14—C15 | 1.3879 (17) | C14'—C15' | 1.3872 (18) |
| C14—H14 | 0.9500 | C14'—H14' | 0.9500 |
| C15—H15 | 0.9500 | C15'—H15' | 0.9500 |
| C16—C17 | 1.3881 (16) | C16'—C17' | 1.3919 (16) |
| C16—C21 | 1.3898 (17) | C16'—C21' | 1.3952 (16) |
| C17—C18 | 1.3894 (18) | C17'—C18' | 1.3861 (18) |
| C17—H17 | 0.9500 | C17'—H17' | 0.9500 |
| C18—C19 | 1.383 (2) | C18'—C19' | 1.3837 (19) |
| C18—H18 | 0.9500 | C18'—H18' | 0.9500 |
| C19—C20 | 1.379 (2) | C19'—C20' | 1.3822 (19) |

| | | | |
|-------------|-------------|----------------|-------------|
| C19—H19 | 0.9500 | C19'—H19' | 0.9500 |
| C20—C21 | 1.3826 (18) | C20'—C21' | 1.3792 (18) |
| C20—H20 | 0.9500 | C20'—H20' | 0.9500 |
| C21—H21 | 0.9500 | C21'—H21' | 0.9500 |
| | | | |
| C6—O1—C5 | 110.17 (8) | C6'—O1'—C5' | 110.25 (8) |
| N1—C1—C2 | 179.94 (19) | N1'—C1'—C2' | 179.47 (14) |
| C6—C2—C1 | 121.39 (11) | C6'—C2'—C1' | 121.78 (11) |
| C6—C2—C3 | 120.28 (11) | C6'—C2'—C3' | 120.02 (11) |
| C1—C2—C3 | 118.33 (11) | C1'—C2'—C3' | 118.20 (10) |
| N2—C3—C2 | 178.90 (14) | N2'—C3'—C2' | 178.76 (14) |
| C7—C4—C9 | 127.97 (11) | C7'—C4'—C9' | 127.80 (11) |
| C7—C4—C5 | 109.10 (10) | C7'—C4'—C5' | 109.09 (10) |
| C9—C4—C5 | 122.86 (11) | C9'—C4'—C5' | 123.09 (10) |
| O1—C5—C4 | 102.37 (9) | O1'—C5'—C4' | 102.35 (9) |
| O1—C5—C16 | 109.19 (9) | O1'—C5'—C16' | 109.11 (8) |
| C4—C5—C16 | 108.53 (9) | C4'—C5'—C16' | 108.89 (9) |
| O1—C5—C10 | 105.72 (8) | O1'—C5'—C10' | 106.34 (8) |
| C4—C5—C10 | 114.22 (10) | C4'—C5'—C10' | 112.82 (9) |
| C16—C5—C10 | 115.82 (10) | C16'—C5'—C10' | 116.33 (10) |
| O1—C6—C2 | 120.36 (10) | O1'—C6'—C2' | 120.27 (10) |
| O1—C6—C7 | 109.26 (10) | O1'—C6'—C7' | 109.49 (9) |
| C2—C6—C7 | 130.38 (11) | C2'—C6'—C7' | 130.22 (11) |
| C4—C7—C8 | 123.65 (11) | C4'—C7'—C8' | 124.09 (11) |
| C4—C7—C6 | 109.02 (10) | C4'—C7'—C6' | 108.81 (10) |
| C8—C7—C6 | 127.34 (11) | C8'—C7'—C6' | 127.10 (10) |
| N3—C8—C7 | 175.48 (14) | N3'—C8'—C7' | 176.62 (13) |
| C4—C9—H9A | 109.5 | C4'—C9'—H9'A | 109.5 |
| C4—C9—H9B | 109.5 | C4'—C9'—H9'B | 109.5 |
| H9A—C9—H9B | 109.5 | H9'A—C9'—H9'B | 109.5 |
| C4—C9—H9C | 109.5 | C4'—C9'—H9'C | 109.5 |
| H9A—C9—H9C | 109.5 | H9'A—C9'—H9'C | 109.5 |
| H9B—C9—H9C | 109.5 | H9'B—C9'—H9'C | 109.5 |
| C15—C10—C11 | 119.65 (11) | C11'—C10'—C15' | 119.72 (11) |
| C15—C10—C5 | 120.37 (11) | C11'—C10'—C5' | 120.81 (10) |
| C11—C10—C5 | 119.70 (11) | C15'—C10'—C5' | 119.32 (11) |
| C12—C11—C10 | 119.95 (12) | C10'—C11'—C12' | 119.71 (12) |
| C12—C11—H11 | 120.0 | C10'—C11'—H11' | 120.1 |
| C10—C11—H11 | 120.0 | C12'—C11'—H11' | 120.1 |
| C13—C12—C11 | 119.97 (12) | C13'—C12'—C11' | 120.31 (12) |
| C13—C12—H12 | 120.0 | C13'—C12'—H12' | 119.8 |
| C11—C12—H12 | 120.0 | C11'—C12'—H12' | 119.8 |
| C14—C13—C12 | 120.39 (12) | C14'—C13'—C12' | 120.11 (12) |
| C14—C13—H13 | 119.8 | C14'—C13'—H13' | 119.9 |
| C12—C13—H13 | 119.8 | C12'—C13'—H13' | 119.9 |
| C13—C14—C15 | 119.99 (12) | C13'—C14'—C15' | 119.93 (12) |
| C13—C14—H14 | 120.0 | C13'—C14'—H14' | 120.0 |
| C15—C14—H14 | 120.0 | C15'—C14'—H14' | 120.0 |

| | | | |
|----------------|--------------|--------------------|--------------|
| C14—C15—C10 | 120.03 (12) | C14'—C15'—C10' | 120.18 (12) |
| C14—C15—H15 | 120.0 | C14'—C15'—H15' | 119.9 |
| C10—C15—H15 | 120.0 | C10'—C15'—H15' | 119.9 |
| C17—C16—C21 | 119.62 (11) | C17'—C16'—C21' | 119.14 (11) |
| C17—C16—C5 | 120.49 (11) | C17'—C16'—C5' | 120.97 (10) |
| C21—C16—C5 | 119.64 (10) | C21'—C16'—C5' | 119.62 (10) |
| C16—C17—C18 | 119.77 (12) | C18'—C17'—C16' | 119.95 (11) |
| C16—C17—H17 | 120.1 | C18'—C17'—H17' | 120.0 |
| C18—C17—H17 | 120.1 | C16'—C17'—H17' | 120.0 |
| C19—C18—C17 | 120.14 (12) | C19'—C18'—C17' | 120.54 (11) |
| C19—C18—H18 | 119.9 | C19'—C18'—H18' | 119.7 |
| C17—C18—H18 | 119.9 | C17'—C18'—H18' | 119.7 |
| C20—C19—C18 | 120.17 (13) | C20'—C19'—C18' | 119.58 (12) |
| C20—C19—H19 | 119.9 | C20'—C19'—H19' | 120.2 |
| C18—C19—H19 | 119.9 | C18'—C19'—H19' | 120.2 |
| C19—C20—C21 | 119.97 (13) | C21'—C20'—C19' | 120.41 (12) |
| C19—C20—H20 | 120.0 | C21'—C20'—H20' | 119.8 |
| C21—C20—H20 | 120.0 | C19'—C20'—H20' | 119.8 |
| C20—C21—C16 | 120.30 (12) | C20'—C21'—C16' | 120.36 (11) |
| C20—C21—H21 | 119.9 | C20'—C21'—H21' | 119.8 |
| C16—C21—H21 | 119.9 | C16'—C21'—H21' | 119.8 |
| | | | |
| C6—O1—C5—C4 | 2.74 (11) | C6'—O1'—C5'—C4' | 1.01 (11) |
| C6—O1—C5—C16 | 117.63 (10) | C6'—O1'—C5'—C16' | 116.26 (10) |
| C6—O1—C5—C10 | -117.13 (10) | C6'—O1'—C5'—C10' | -117.54 (10) |
| C7—C4—C5—O1 | -1.50 (12) | C7'—C4'—C5'—O1' | -0.64 (12) |
| C9—C4—C5—O1 | 175.57 (10) | C9'—C4'—C5'—O1' | 177.60 (10) |
| C7—C4—C5—C16 | -116.87 (11) | C7'—C4'—C5'—C16' | -116.05 (10) |
| C9—C4—C5—C16 | 60.21 (14) | C9'—C4'—C5'—C16' | 62.19 (13) |
| C7—C4—C5—C10 | 112.25 (11) | C7'—C4'—C5'—C10' | 113.21 (11) |
| C9—C4—C5—C10 | -70.67 (14) | C9'—C4'—C5'—C10' | -68.54 (14) |
| C5—O1—C6—C2 | 177.73 (10) | C5'—O1'—C6'—C2' | -179.83 (10) |
| C5—O1—C6—C7 | -2.95 (12) | C5'—O1'—C6'—C7' | -1.00 (12) |
| C1—C2—C6—O1 | 179.78 (11) | C1'—C2'—C6'—O1' | -179.38 (11) |
| C3—C2—C6—O1 | -0.45 (17) | C3'—C2'—C6'—O1' | 0.38 (17) |
| C1—C2—C6—C7 | 0.6 (2) | C1'—C2'—C6'—C7' | 2.1 (2) |
| C3—C2—C6—C7 | -179.61 (11) | C3'—C2'—C6'—C7' | -178.17 (12) |
| C9—C4—C7—C8 | 2.6 (2) | C9'—C4'—C7'—C8' | 1.5 (2) |
| C5—C4—C7—C8 | 179.51 (11) | C5'—C4'—C7'—C8' | 179.64 (11) |
| C9—C4—C7—C6 | -177.01 (11) | C9'—C4'—C7'—C6' | -178.04 (11) |
| C5—C4—C7—C6 | -0.12 (13) | C5'—C4'—C7'—C6' | 0.10 (13) |
| O1—C6—C7—C4 | 1.95 (13) | O1'—C6'—C7'—C4' | 0.57 (13) |
| C2—C6—C7—C4 | -178.82 (12) | C2'—C6'—C7'—C4' | 179.24 (12) |
| O1—C6—C7—C8 | -177.67 (11) | O1'—C6'—C7'—C8' | -178.96 (11) |
| C2—C6—C7—C8 | 1.6 (2) | C2'—C6'—C7'—C8' | -0.3 (2) |
| O1—C5—C10—C15 | 90.54 (12) | O1'—C5'—C10'—C11' | -94.48 (12) |
| C4—C5—C10—C15 | -21.21 (15) | C4'—C5'—C10'—C11' | 154.11 (10) |
| C16—C5—C10—C15 | -148.43 (10) | C16'—C5'—C10'—C11' | 27.23 (14) |

| | | | |
|-----------------|--------------|---------------------|--------------|
| O1—C5—C10—C11 | -83.48 (12) | O1'—C5'—C10'—C15' | 81.20 (12) |
| C4—C5—C10—C11 | 164.77 (10) | C4'—C5'—C10'—C15' | -30.22 (14) |
| C16—C5—C10—C11 | 37.56 (14) | C16'—C5'—C10'—C15' | -157.09 (10) |
| C15—C10—C11—C12 | 0.68 (17) | C15'—C10'—C11'—C12' | 1.69 (17) |
| C5—C10—C11—C12 | 174.74 (11) | C5'—C10'—C11'—C12' | 177.34 (10) |
| C10—C11—C12—C13 | -0.52 (18) | C10'—C11'—C12'—C13' | -1.61 (18) |
| C11—C12—C13—C14 | -0.1 (2) | C11'—C12'—C13'—C14' | 0.16 (19) |
| C12—C13—C14—C15 | 0.6 (2) | C12'—C13'—C14'—C15' | 1.22 (19) |
| C13—C14—C15—C10 | -0.41 (19) | C13'—C14'—C15'—C10' | -1.13 (19) |
| C11—C10—C15—C14 | -0.22 (17) | C11'—C10'—C15'—C14' | -0.33 (17) |
| C5—C10—C15—C14 | -174.24 (11) | C5'—C10'—C15'—C14' | -176.05 (11) |
| O1—C5—C16—C17 | -30.62 (13) | O1'—C5'—C16'—C17' | -21.91 (15) |
| C4—C5—C16—C17 | 80.23 (12) | C4'—C5'—C16'—C17' | 89.06 (12) |
| C10—C5—C16—C17 | -149.77 (10) | C10'—C5'—C16'—C17' | -142.14 (11) |
| O1—C5—C16—C21 | 155.10 (10) | O1'—C5'—C16'—C21' | 164.16 (10) |
| C4—C5—C16—C21 | -94.05 (12) | C4'—C5'—C16'—C21' | -84.88 (13) |
| C10—C5—C16—C21 | 35.95 (15) | C10'—C5'—C16'—C21' | 43.92 (15) |
| C21—C16—C17—C18 | -1.44 (17) | C21'—C16'—C17'—C18' | 0.08 (18) |
| C5—C16—C17—C18 | -175.72 (10) | C5'—C16'—C17'—C18' | -173.88 (11) |
| C16—C17—C18—C19 | -0.09 (19) | C16'—C17'—C18'—C19' | -0.94 (19) |
| C17—C18—C19—C20 | 0.7 (2) | C17'—C18'—C19'—C20' | 0.8 (2) |
| C18—C19—C20—C21 | 0.3 (2) | C18'—C19'—C20'—C21' | 0.1 (2) |
| C19—C20—C21—C16 | -1.8 (2) | C19'—C20'—C21'—C16' | -1.0 (2) |
| C17—C16—C21—C20 | 2.41 (18) | C17'—C16'—C21'—C20' | 0.86 (19) |
| C5—C16—C21—C20 | 176.74 (11) | C5'—C16'—C21'—C20' | 174.90 (12) |

Hydrogen-bond geometry (\AA , $^\circ$)

Cg1 is the centroid of the C10–C15 phenyl ring

| <i>D</i> —H \cdots <i>A</i> | <i>D</i> —H | H \cdots <i>A</i> | <i>D</i> \cdots <i>A</i> | <i>D</i> —H \cdots <i>A</i> |
|-------------------------------------|-------------|---------------------|----------------------------|-------------------------------|
| C20'—H20' \cdots Cg1 ⁱ | 0.95 | 2.69 | 3.4041 (14) | 133 |
| C9—H9B \cdots N3' | 0.98 | 2.70 | 3.4560 (14) | 134 |

Symmetry code: (i) $-x+1, -y+1, -z$.