

Acta Crystallographica Section E

## Structure Reports

Online

ISSN 1600-5368

## (4-Fluorophenyl)(4-hydroxy-3-methylphenyl)methanone

C. S. Dileep,<sup>a</sup> V. Lakshmi Ranganatha,<sup>b</sup> N. K. Lokanath,<sup>a</sup> S. A. Khanum<sup>b</sup> and M. A. Sridhar<sup>a\*</sup><sup>a</sup>Department of Studies in Physics, Manasagangothri, University of Mysore, Mysore 570 006, India, and <sup>b</sup>Department of Chemistry, Yuvaraja's College, University of Mysore, Mysore 570 005, India

Correspondence e-mail: mas@physics.uni-mysore.ac.in

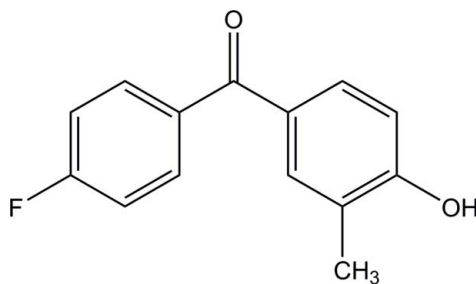
Received 10 December 2013; accepted 13 December 2013

Key indicators: single-crystal X-ray study;  $T = 296$  K; mean  $\sigma(\text{C}-\text{C}) = 0.004$  Å;  $R$  factor = 0.068;  $wR$  factor = 0.273; data-to-parameter ratio = 11.4.

In the title compound,  $\text{C}_{14}\text{H}_{11}\text{FO}_2$ , the two benzene rings are not coplanar, with a dihedral angle of  $57.45$  ( $12$ )° between their planes. In the crystal, molecules are linked by an  $\text{O}-\text{H}\cdots\text{O}$  hydrogen bond, forming a  $2_1$  helical chain along the  $b$  axis.

## Related literature

For the biological activities of benzophenone derivatives, see: Khanum *et al.* (2004); Naveen *et al.* (2006); Selvi *et al.* (2003). For related structures, see: Mahendra *et al.* (2005); Dileep, Lakshmi Ranganatha *et al.* (2013); Dileep, Prashanth *et al.* (2013). For bond-length data, see: Allen *et al.* (1987).



## Experimental

## Crystal data

 $\text{C}_{14}\text{H}_{11}\text{FO}_2$  $M_r = 230.23$ Monoclinic,  $P2_1/n$  $a = 5.9265$  (10) Å $b = 13.112$  (2) Å $c = 14.556$  (2) Å $\beta = 96.875$  (7)° $V = 1123.0$  (3) Å<sup>3</sup> $Z = 4$ Cu  $K\alpha$  radiation $\mu = 0.85$  mm<sup>-1</sup> $T = 296$  K $0.27 \times 0.25 \times 0.23$  mm

## Data collection

Bruker X8 Proteum diffractometer

Absorption correction: multi-scan

(SADABS; Bruker, 2009)

 $T_{\min} = 0.804$ ,  $T_{\max} = 0.829$ 

7047 measured reflections

1769 independent reflections

1317 reflections with  $I > 2\sigma(I)$  $R_{\text{int}} = 0.065$ 

## Refinement

 $R[F^2 > 2\sigma(F^2)] = 0.068$  $wR(F^2) = 0.273$  $S = 1.16$ 

1769 reflections

155 parameters

H-atom parameters constrained

 $\Delta\rho_{\text{max}} = 0.27$  e Å<sup>-3</sup> $\Delta\rho_{\text{min}} = -0.36$  e Å<sup>-3</sup>

Table 1

Hydrogen-bond geometry (Å, °).

$D-H\cdots A$	$D-H$	$H\cdots A$	$D\cdots A$	$D-H\cdots A$
$\text{O14}-\text{H14}\cdots\text{O9}^i$	0.82	1.91	2.688 (3)	158

Symmetry code: (i)  $-x + \frac{1}{2}, y + \frac{1}{2}, -z + \frac{3}{2}$ .

Data collection: *APEX2* (Bruker, 2009); cell refinement: *SAINT* (Bruker, 2009); data reduction: *SAINT*; program(s) used to solve structure: *SHELXS97* (Sheldrick, 2008); program(s) used to refine structure: *SHELXL97* (Sheldrick, 2008); molecular graphics: *Mercury* (Macrae *et al.*, 2006); software used to prepare material for publication: *SHELXL97*.

The authors would like to thank the University of Mysore for providing the diffractometer facility under IoE. CSD would like to thank the University of Mysore for awarding an RFSMS fellowship under the head DV5/Physics/389/RFSMS/2009–2010/10.07.2012. VLR acknowledges the financial support provided by the Department of Science and Technology, New Delhi, under the INSPIRE–Fellowship scheme [IF110555]. SAK gratefully acknowledges the financial assistance provided by UGC under major research project scheme [F.39/737/2010 (SR)].

Supplementary data and figures for this paper are available from the IUCr electronic archives (Reference: IS5325).

## References

- Allen, F. H., Kennard, O., Watson, D. G., Brammer, L., Orpen, A. G. & Taylor, R. (1987). *J. Chem. Soc. Perkin Trans. 2*, pp. S1–19.
- Bruker (2009). *APEX2*, *SAINT* and *SADABS*. Bruker AXS Inc., Madison, Wisconsin, USA.
- Dileep, C. S., Lakshmi Ranganatha, V., Lokanath, N. K., Shaukath, A. K. & Sridhar, M. A. (2013). *Acta Cryst. E* **69**, o1550.
- Dileep, C. S., Prashanth, T., Jeyaseelan, S., Khanum, S. A. & Sridhar, M. A. (2013). *Acta Cryst. E* **69**, o1676.
- Khanum, S. A., Venu, T. D., Shashikanth, S. & Firdouse, A. (2004). *Bioorg. Med. Chem. Lett.* **12**, 2093–2095.
- Macrae, C. F., Edgington, P. R., McCabe, P., Pidcock, E., Shields, G. P., Taylor, R., Towler, M. & van de Streek, J. (2006). *J. Appl. Cryst.* **39**, 453–457.
- Mahendra, M., Khanum, S. A., Singh, A. K., Shashikanth, S., Doreswamy, B. H., Sridhar, M. A. & Shashidhara Prasad, J. (2005). *Acta Cryst. E* **61**, o2990–o2991.
- Naveen, S., Khanum, S. A., Devaiah, V. T., Shashikanth, S., Anandalwar, S. M. & Prasad, S. (2006). *Anal. Sci.* **22**, 183–184.
- Selvi, A. T., Joseph, G. S. & Jayaprakash, G. K. (2003). *Food Microbiol.* **20**, 455–460.
- Sheldrick, G. M. (2008). *Acta Cryst. A* **64**, 112–122.

## supporting information

*Acta Cryst.* (2014). E70, o76 [https://doi.org/10.1107/S1600536813033783]

**(4-Fluorophenyl)(4-hydroxy-3-methylphenyl)methanone**

**C. S. Dileep, V. Lakshmi Ranganatha, N. K. Lokanath, S. A. Khanum and M. A. Sridhar**

**S1. Comment**

The great interest in the benzophenone substances is fundamentally due to their diverse biological and chemical properties. Benzophenone and related compounds have a wide variety of biological activities such as anti-fungal and anti-inflammatory activities (Khanum *et al.*, 2004; Selvi *et al.*, 2003). The presence of various substituents in the benzophenone nucleus is essential in determining the quantitative structure-activity relationships of these systems. The competence of benzophenones as chemotherapeutic agents, especially as inhibitors of HIV-1 reverse transcriptase RT, cancer and inflammation, is well established. Their chemistry has been studied extensively. In addition, methyl-substituted benzophenones exhibit chemotherapeutical activity against fungi. Some studies were carried out to show that methyl-substituted benzophenones exhibit anti-fungal properties (Naveen *et al.*, 2006). In view of its extensive background, the title compound was prepared and characterized by single-crystal X-ray diffraction.

In the molecular structure of the title compound (Fig. 1), bond lengths and angles do not show large deviations and are comparable with those reported for a similar structure (Mahendra *et al.*, 2005; Dileep, Lakshmi Ranganatha *et al.*, 2013; Dileep, Prashanth *et al.*, 2013). The mean plane angle between the two phenyl rings (C2–C7) and (C10–C13/C15/C17) is 57.45 (12)°. The bond length between C2 and F1 is 1.357 (4) Å and is normal with the standard value (Allen *et al.*, 1987). The conformation of the attachment of the two phenyl rings to the central carbonyl group can also be characterized by torsion angles (O9–C8–C5–C6) and (O9–C8–C10–C17) of -141.1 (3) and -152.8 (3)°, respectively. The crystal structure is stabilized by intermolecular O—H...O hydrogen bonds. The molecular packing when viewed down the *a* axis is shown in Fig. 2.

**S2. Experimental**

The title compound was synthesized by a mixture of anhydrous aluminium chloride (0.03 mol) and 2-methyl-phenyl-4-fluorobenzoate (0.02 mol) in dry nitrobenzene (40 ml) was protected from moisture by calcium chloride guard tube and refluxed at 80–900 °C with stirring for 45 min. At the end of this period the solution was cooled and decomposed by acidulated ice-cold water. Nitrobenzene was removed by steam distillation. The residual solid was crushed into powder, dissolved in ether and extracted with 10 percent sodium hydroxide. The basic aqueous solution was neutralized with 10 percent hydrochloric acid. The filtered solid was washed with distilled water and recrystallized from ethanol to afford pale yellow needles of (4-fluorophenyl)(4-hydroxy-3-methylphenyl)methanone.

**S3. Refinement**

All H-atoms were located from difference maps and were positioned geometrically and refined using a riding model with C—H = 0.93–0.96 Å and O—H = 0.82 Å, and with  $U_{\text{iso}}(\text{H}) = 1.2U_{\text{eq}}(\text{C}_{\text{aromatic}})$  or  $1.5U_{\text{eq}}(\text{O}, \text{C}_{\text{methyl}})$ . The data collection did not yield reflections with measurable intensity range as the crystal was diffracting a bit poorly. Hence, the range is slightly less (64.45° rather than the required 65°).

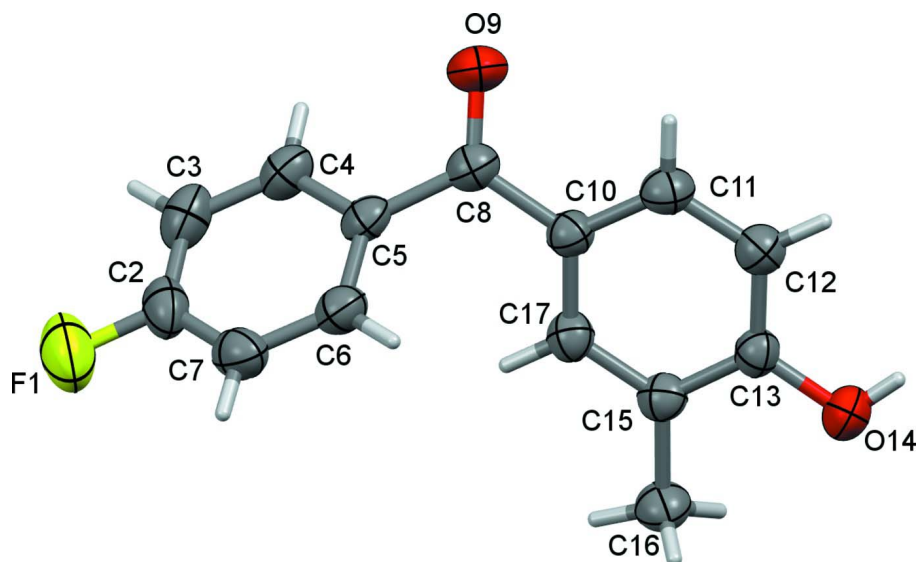


Figure 1

An ORTEP view of the title compound with the atom-labeling scheme. The thermal ellipsoids are drawn at the 50% probability level.

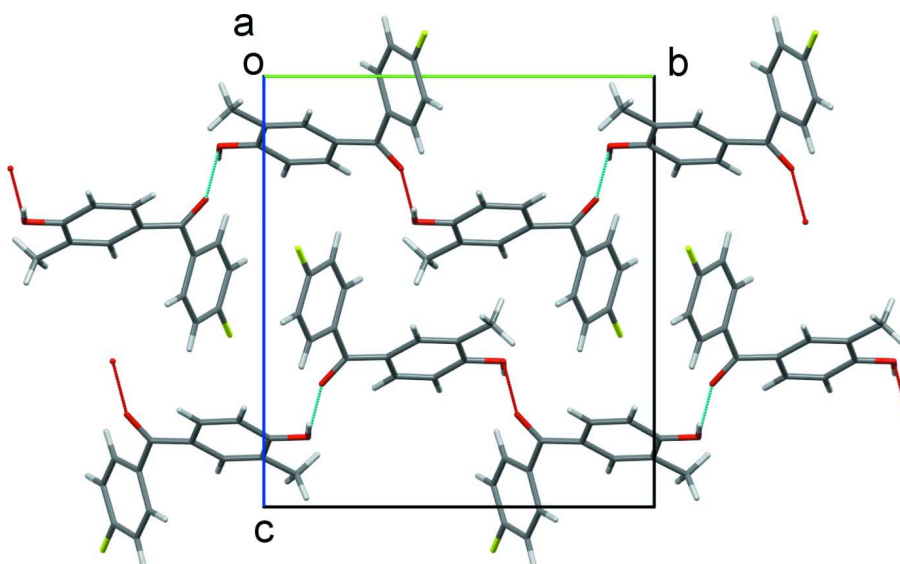


Figure 2

A molecular packing view of the title compound down the *a* axis, showing hydrogen bonds between the molecules.

#### (4-Hydroxy-3-methylphenyl)(4-fluorophenyl)methanone

##### Crystal data

$C_{14}H_{11}FO_2$

$M_r = 230.23$

Monoclinic,  $P2_1/n$

Hall symbol:  $-P 2_1n$

$a = 5.9265 (10) \text{ \AA}$

$b = 13.112 (2) \text{ \AA}$

$c = 14.556 (2) \text{ \AA}$

$\beta = 96.875 (7)^\circ$

$V = 1123.0 (3) \text{ \AA}^3$

$Z = 4$

$F(000) = 480$

$D_x = 1.362 \text{ Mg m}^{-3}$

Cu  $K\alpha$  radiation,  $\lambda = 1.54178 \text{ \AA}$

Cell parameters from 1769 reflections

$\theta = 4.6\text{--}64.5^\circ$   
 $\mu = 0.85\text{ mm}^{-1}$   
 $T = 296\text{ K}$

Block, colorless  
 $0.27 \times 0.25 \times 0.23\text{ mm}$

*Data collection*

Bruker X8 Proteum  
 diffractometer  
 Radiation source: Bruker MicroStar microfocus  
 rotating anode  
 Helios multilayer optics monochromator  
 Detector resolution:  $10.7\text{ pixels mm}^{-1}$   
 $\varphi$  and  $\omega$  scans  
 Absorption correction: multi-scan  
 (SADABS; Bruker, 2009)

$T_{\min} = 0.804$ ,  $T_{\max} = 0.829$   
 7047 measured reflections  
 1769 independent reflections  
 1317 reflections with  $I > 2\sigma(I)$   
 $R_{\text{int}} = 0.065$   
 $\theta_{\max} = 64.5^\circ$ ,  $\theta_{\min} = 4.6^\circ$   
 $h = -3 \rightarrow 6$   
 $k = -15 \rightarrow 15$   
 $l = -16 \rightarrow 16$

*Refinement*

Refinement on  $F^2$   
 Least-squares matrix: full  
 $R[F^2 > 2\sigma(F^2)] = 0.068$   
 $wR(F^2) = 0.273$   
 $S = 1.16$   
 1769 reflections  
 155 parameters  
 0 restraints  
 Primary atom site location: structure-invariant  
 direct methods

Secondary atom site location: difference Fourier  
 map  
 Hydrogen site location: inferred from  
 neighbouring sites  
 H-atom parameters constrained  
 $w = 1/[\sigma^2(F_o^2) + (0.197P)^2]$   
 where  $P = (F_o^2 + 2F_c^2)/3$   
 $(\Delta/\sigma)_{\max} = 0.007$   
 $\Delta\rho_{\max} = 0.27\text{ e \AA}^{-3}$   
 $\Delta\rho_{\min} = -0.36\text{ e \AA}^{-3}$

*Special details*

**Geometry.** Bond distances, angles *etc.* have been calculated using the rounded fractional coordinates. All su's are estimated from the variances of the (full) variance-covariance matrix. The cell e.s.d.'s are taken into account in the estimation of distances, angles and torsion angles

**Refinement.** Refinement on  $F^2$  for ALL reflections except those flagged by the user for potential systematic errors. Weighted  $R$ -factors  $wR$  and all goodnesses of fit  $S$  are based on  $F^2$ , conventional  $R$ -factors  $R$  are based on  $F$ , with  $F$  set to zero for negative  $F^2$ . The observed criterion of  $F^2 > \sigma(F^2)$  is used only for calculating  $-R$ -factor-obs *etc.* and is not relevant to the choice of reflections for refinement.  $R$ -factors based on  $F^2$  are statistically about twice as large as those based on  $F$ , and  $R$ -factors based on ALL data will be even larger.

*Fractional atomic coordinates and isotropic or equivalent isotropic displacement parameters ( $\text{\AA}^2$ )*

	<i>x</i>	<i>y</i>	<i>z</i>	$U_{\text{iso}}^*/U_{\text{eq}}$
F1	-0.8701 (4)	0.08743 (17)	0.39982 (15)	0.0892 (9)
O9	-0.0623 (4)	0.14888 (15)	0.71425 (13)	0.0602 (8)
O14	0.1969 (4)	0.61296 (12)	0.66191 (12)	0.0526 (8)
C2	-0.6901 (6)	0.1166 (2)	0.4605 (2)	0.0549 (10)
C3	-0.6834 (6)	0.0875 (2)	0.5518 (2)	0.0565 (10)
C4	-0.4989 (5)	0.11772 (18)	0.61269 (17)	0.0480 (10)
C5	-0.3285 (5)	0.17959 (17)	0.58441 (15)	0.0402 (8)
C6	-0.3409 (5)	0.20673 (18)	0.49111 (16)	0.0464 (9)
C7	-0.5214 (6)	0.1741 (2)	0.42877 (17)	0.0544 (9)
C8	-0.1343 (5)	0.21080 (19)	0.65391 (15)	0.0420 (8)
C10	-0.0411 (5)	0.31539 (18)	0.65178 (16)	0.0386 (8)
C11	0.1779 (5)	0.3367 (2)	0.69635 (17)	0.0443 (9)
C12	0.2609 (5)	0.43554 (19)	0.69977 (16)	0.0440 (9)

C13	0.1231 (5)	0.51463 (17)	0.65931 (14)	0.0385 (8)
C15	-0.0954 (5)	0.49616 (18)	0.61519 (15)	0.0395 (8)
C16	-0.2400 (5)	0.5833 (2)	0.57530 (19)	0.0502 (10)
C17	-0.1731 (5)	0.39631 (17)	0.61220 (15)	0.0397 (8)
H3	-0.79970	0.04880	0.57170	0.0680*
H4	-0.48790	0.09630	0.67400	0.0580*
H6	-0.22750	0.24690	0.47080	0.0560*
H7	-0.52850	0.19070	0.36640	0.0650*
H11	0.26740	0.28410	0.72370	0.0530*
H12	0.40630	0.44940	0.72860	0.0530*
H14	0.32560	0.61580	0.68970	0.0790*
H16A	-0.18110	0.60860	0.52110	0.0750*
H16B	-0.23820	0.63690	0.62030	0.0750*
H16C	-0.39320	0.56010	0.55900	0.0750*
H17	-0.31810	0.38260	0.58290	0.0480*

*Atomic displacement parameters (Å<sup>2</sup>)*

	$U^{11}$	$U^{22}$	$U^{33}$	$U^{12}$	$U^{13}$	$U^{23}$
F1	0.0791 (16)	0.0866 (15)	0.0952 (15)	-0.0148 (13)	-0.0165 (15)	-0.0221 (11)
O9	0.0725 (17)	0.0477 (12)	0.0571 (11)	-0.0012 (11)	-0.0052 (12)	0.0163 (8)
O14	0.0604 (15)	0.0388 (12)	0.0564 (12)	-0.0082 (9)	-0.0018 (11)	-0.0009 (7)
C2	0.0504 (19)	0.0456 (16)	0.0657 (16)	-0.0019 (15)	-0.0059 (16)	-0.0159 (13)
C3	0.053 (2)	0.0429 (15)	0.0758 (18)	-0.0103 (16)	0.0174 (17)	-0.0100 (13)
C4	0.056 (2)	0.0390 (15)	0.0514 (14)	-0.0040 (13)	0.0167 (15)	0.0008 (10)
C5	0.0481 (17)	0.0279 (12)	0.0455 (12)	0.0003 (12)	0.0088 (13)	-0.0005 (9)
C6	0.055 (2)	0.0371 (14)	0.0478 (13)	-0.0018 (13)	0.0087 (15)	0.0038 (9)
C7	0.072 (2)	0.0454 (15)	0.0437 (13)	0.0038 (16)	-0.0011 (16)	-0.0018 (10)
C8	0.0462 (17)	0.0369 (13)	0.0437 (12)	0.0020 (12)	0.0087 (13)	0.0028 (9)
C10	0.0408 (17)	0.0354 (13)	0.0393 (11)	0.0018 (11)	0.0038 (12)	0.0004 (9)
C11	0.0446 (18)	0.0412 (14)	0.0473 (13)	0.0052 (13)	0.0058 (13)	0.0038 (9)
C12	0.0443 (17)	0.0438 (15)	0.0435 (13)	0.0000 (13)	0.0034 (14)	0.0001 (10)
C13	0.0428 (16)	0.0360 (13)	0.0367 (11)	-0.0039 (12)	0.0052 (12)	-0.0038 (8)
C15	0.0451 (18)	0.0356 (13)	0.0380 (12)	0.0042 (12)	0.0064 (12)	-0.0029 (9)
C16	0.052 (2)	0.0404 (15)	0.0571 (15)	0.0081 (14)	0.0018 (16)	0.0004 (10)
C17	0.0392 (17)	0.0391 (13)	0.0408 (12)	0.0006 (12)	0.0052 (12)	-0.0041 (9)

*Geometric parameters (Å, °)*

F1—C2	1.356 (4)	C12—C13	1.405 (4)
O9—C8	1.234 (3)	C13—C15	1.396 (4)
O14—C13	1.361 (3)	C15—C16	1.503 (4)
O14—H14	0.8200	C15—C17	1.387 (3)
C2—C7	1.376 (5)	C3—H3	0.9300
C2—C3	1.379 (4)	C4—H4	0.9300
C3—C4	1.381 (4)	C6—H6	0.9300
C4—C5	1.395 (4)	C7—H7	0.9300
C5—C6	1.397 (3)	C11—H11	0.9300

C5—C8	1.496 (4)	C12—H12	0.9300
C6—C7	1.385 (4)	C16—H16A	0.9600
C8—C10	1.480 (4)	C16—H16B	0.9600
C10—C17	1.401 (4)	C16—H16C	0.9600
C10—C11	1.408 (4)	C17—H17	0.9300
C11—C12	1.385 (4)		
F1…H3 <sup>i</sup>	2.7200	C17…H6	2.8300
F1…H12 <sup>ii</sup>	2.7200	C17…H16A <sup>vii</sup>	3.0200
O9…O14 <sup>iii</sup>	2.688 (3)	H3…F1 <sup>i</sup>	2.7200
O14…O9 <sup>iv</sup>	2.688 (3)	H4…O9	2.6100
O9…H4	2.6100	H4…O14 <sup>v</sup>	2.8300
O9…H12 <sup>iii</sup>	2.8600	H4…C13 <sup>v</sup>	2.8500
O9…H14 <sup>iii</sup>	1.9100	H6…C10	2.8800
O9…H16B <sup>v</sup>	2.8100	H6…C17	2.8300
O9…H11	2.6300	H6…H17	2.5200
O14…H16A	2.8500	H6…O14 <sup>vii</sup>	2.6900
O14…H16B	2.6000	H7…C11 <sup>xiii</sup>	2.9100
O14…H4 <sup>vi</sup>	2.8300	H11…O9	2.6300
O14…H11 <sup>iv</sup>	2.7900	H11…O14 <sup>iii</sup>	2.7900
O14…H6 <sup>vii</sup>	2.6900	H12…H14	2.2900
C2…C3 <sup>viii</sup>	3.491 (4)	H12…O9 <sup>iv</sup>	2.8600
C2…C4 <sup>viii</sup>	3.481 (4)	H12…F1 <sup>xiv</sup>	2.7200
C3…C8 <sup>ix</sup>	3.594 (4)	H14…H12	2.2900
C3…C2 <sup>viii</sup>	3.491 (4)	H14…O9 <sup>iv</sup>	1.9100
C4…C2 <sup>viii</sup>	3.481 (4)	H14…C8 <sup>iv</sup>	3.0100
C6…C17	3.139 (3)	H16A…O14	2.8500
C7…C16 <sup>x</sup>	3.479 (4)	H16A…C15 <sup>vii</sup>	3.0500
C8…C3 <sup>xi</sup>	3.594 (4)	H16A…C17 <sup>vii</sup>	3.0200
C16…C7 <sup>x</sup>	3.479 (4)	H16B…O14	2.6000
C17…C6	3.139 (3)	H16B…O9 <sup>vi</sup>	2.8100
C5…H17	2.6600	H16B…C7 <sup>x</sup>	2.9000
C6…H17	2.6600	H16C…H17	2.3900
C7…H16B <sup>x</sup>	2.9000	H16C…H16C <sup>x</sup>	2.5500
C8…H14 <sup>iii</sup>	3.0100	H17…C5	2.6600
C10…H6	2.8800	H17…C6	2.6600
C11…H7 <sup>xii</sup>	2.9100	H17…H6	2.5200
C13…H4 <sup>vi</sup>	2.8500	H17…H16C	2.3900
C15…H16A <sup>vii</sup>	3.0500		
C13—O14—H14	109.00	C16—C15—C17	122.3 (3)
F1—C2—C7	118.9 (3)	C13—C15—C17	117.7 (2)
C3—C2—C7	122.5 (3)	C10—C17—C15	122.4 (3)
F1—C2—C3	118.7 (3)	C2—C3—H3	121.00
C2—C3—C4	117.9 (3)	C4—C3—H3	121.00
C3—C4—C5	121.5 (2)	C3—C4—H4	119.00
C4—C5—C6	118.6 (2)	C5—C4—H4	119.00
C4—C5—C8	119.0 (2)	C5—C6—H6	120.00

C6—C5—C8	122.3 (2)	C7—C6—H6	120.00
C5—C6—C7	120.3 (3)	C2—C7—H7	120.00
C2—C7—C6	119.0 (2)	C6—C7—H7	121.00
O9—C8—C10	121.8 (2)	C10—C11—H11	120.00
C5—C8—C10	119.9 (2)	C12—C11—H11	120.00
O9—C8—C5	118.3 (2)	C11—C12—H12	120.00
C8—C10—C11	120.0 (2)	C13—C12—H12	120.00
C8—C10—C17	121.3 (3)	C15—C16—H16A	110.00
C11—C10—C17	118.6 (2)	C15—C16—H16B	109.00
C10—C11—C12	120.4 (2)	C15—C16—H16C	109.00
C11—C12—C13	119.3 (3)	H16A—C16—H16B	109.00
O14—C13—C15	117.0 (2)	H16A—C16—H16C	109.00
C12—C13—C15	121.7 (2)	H16B—C16—H16C	109.00
O14—C13—C12	121.3 (2)	C10—C17—H17	119.00
C13—C15—C16	120.0 (2)	C15—C17—H17	119.00
F1—C2—C3—C4	179.9 (2)	C5—C8—C10—C11	-160.8 (2)
C7—C2—C3—C4	-0.1 (4)	C5—C8—C10—C17	24.2 (4)
F1—C2—C7—C6	178.0 (3)	C8—C10—C11—C12	-175.9 (2)
C3—C2—C7—C6	-2.0 (4)	C17—C10—C11—C12	-0.7 (4)
C2—C3—C4—C5	2.8 (4)	C8—C10—C17—C15	175.3 (2)
C3—C4—C5—C6	-3.3 (4)	C11—C10—C17—C15	0.2 (4)
C3—C4—C5—C8	179.3 (2)	C10—C11—C12—C13	0.8 (4)
C4—C5—C6—C7	1.2 (4)	C11—C12—C13—O14	179.3 (2)
C8—C5—C6—C7	178.5 (2)	C11—C12—C13—C15	-0.4 (4)
C4—C5—C8—O9	36.2 (4)	O14—C13—C15—C16	-1.5 (3)
C4—C5—C8—C10	-140.9 (3)	O14—C13—C15—C17	-179.9 (2)
C6—C5—C8—O9	-141.1 (3)	C12—C13—C15—C16	178.2 (2)
C6—C5—C8—C10	41.8 (4)	C12—C13—C15—C17	-0.2 (3)
C5—C6—C7—C2	1.4 (4)	C13—C15—C17—C10	0.3 (4)
O9—C8—C10—C11	22.2 (4)	C16—C15—C17—C10	-178.0 (2)
O9—C8—C10—C17	-152.8 (3)		

Symmetry codes: (i)  $-x-2, -y, -z+1$ ; (ii)  $x-3/2, -y+1/2, z-1/2$ ; (iii)  $-x+1/2, y-1/2, -z+3/2$ ; (iv)  $-x+1/2, y+1/2, -z+3/2$ ; (v)  $-x-1/2, y-1/2, -z+3/2$ ; (vi)  $-x-1/2, y+1/2, -z+3/2$ ; (vii)  $-x, -y+1, -z+1$ ; (viii)  $-x-1, -y, -z+1$ ; (ix)  $x-1, y, z$ ; (x)  $-x-1, -y+1, -z+1$ ; (xi)  $x+1, y, z$ ; (xii)  $x+1/2, -y+1/2, z+1/2$ ; (xiii)  $x-1/2, -y+1/2, z-1/2$ ; (xiv)  $x+3/2, -y+1/2, z+1/2$ .

Hydrogen-bond geometry ( $\text{\AA}, ^\circ$ )

$D-H\cdots A$	$D-H$	$H\cdots A$	$D\cdots A$	$D-H\cdots A$
O14—H14 <sup>iv</sup> —O9 <sup>iv</sup>	0.82	1.91	2.688 (3)	158

Symmetry code: (iv)  $-x+1/2, y+1/2, -z+3/2$ .