



Crystal structure of 4-methoxy-*N*-[(pyrrolidin-1-yl)carbothioyl]benzamide

Khairi Suhud,^{a,b} Lee Yook Heng,^a Siti Aishah Hasbullah,^a Musa Ahmad^c and Mohammad B. Kassim^{a,d,*}

^aSchool of Chemical Sciences and Food Technology, Faculty of Science and Technology, Universiti Kebangsaan Malaysia, 43600 Selangor, Malaysia,

^bDepartment of Chemistry, Mathematics & Natural Science Faculty, Universitas Syiah Kuala, Banda Aceh, 23111, Indonesia, ^cChemical Technology Program, Faculty of Science Technology, Universiti Sains Islam Malaysia, Bandar Baru Nilai, 71800 Nilai, Negeri Sembilan, Malaysia, and ^dFuel Cell Institute, Universiti Kebangsaan Malaysia, 43600 Selangor, Malaysia. *Correspondence e-mail: mb_kassim@ukm.edu.my

Received 10 February 2015; accepted 24 February 2015

Edited by H. Stoeckli-Evans, University of Neuchâtel, Switzerland

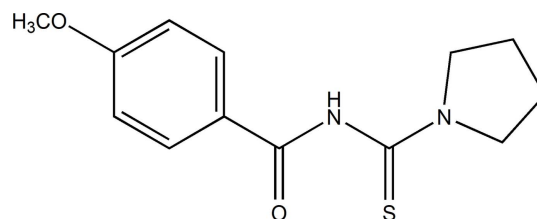
In the title compound, C₁₃H₁₆N₂O₂S, the pyrrolidine ring has a twisted conformation on the central –CH₂–CH₂– bond. Its mean plane is inclined to the 4-methoxybenzoyl ring by 72.79 (15)°. In the crystal, molecules are linked by N–H···O and C–H···O hydrogen bonds to the same O-atom acceptor, forming chains along [001]. The chains are linked *via* slipped parallel π – π interactions [inter-centroid distance = 3.7578 (13) Å], forming undulating slabs parallel to (100).

Keywords: crystal structure; benzoylthiourea; pyrrolidine; thiourea; benzamide; hydrogen bonding.

CCDC reference: 1051012

1. Related literature

For thiourea derivatives containing a carbonothioyl R–C(=O)–N(H)–C(=S)–N functional group, where R is an alkyl or aryl group, see: Arslan *et al.* (2006). For copper(II) complexes of similar compounds, see: Kulcu *et al.* (2005); Tan *et al.* (2014). For the biological properties of coordination complexes of such compounds, see: Rodríguez-Fernández *et al.* (2005); Cikla *et al.* (2010). For the crystal structures of similar compounds, see: Al-abbasi *et al.* (2011, 2012); Md Nasir *et al.* (2011); Hassan *et al.* (2008, 2009).



2. Experimental

2.1. Crystal data

C₁₃H₁₆N₂O₂S

M_r = 264.34

Monoclinic, *P*2₁/*c*

a = 11.8548 (12) Å

b = 11.4463 (11) Å

c = 9.8317 (9) Å

β = 93.124 (3)°

V = 1332.1 (2) Å³

Z = 4

Mo *K*α radiation

μ = 0.24 mm⁻¹

T = 296 K

0.50 × 0.41 × 0.15 mm

2.2. Data collection

Bruker SMART APEX CCD area-detector diffractometer

Absorption correction: multi-scan

(*SADABS*; Bruker, 2007)

T_{min} = 0.890, *T_{max}* = 0.965

17732 measured reflections

2763 independent reflections

2140 reflections with *I* > 2σ(*I*)

R_{int} = 0.043

2.3. Refinement

R[*F*² > 2σ(*F*²)] = 0.049

wR(*F*²) = 0.130

S = 1.07

2763 reflections

169 parameters

H atoms treated by a mixture of independent and constrained refinement

$\Delta\rho_{\max}$ = 0.26 e Å⁻³

$\Delta\rho_{\min}$ = -0.23 e Å⁻³

Table 1

Hydrogen-bond geometry (Å, °).

| <i>D</i> –H··· <i>A</i> | <i>D</i> –H | H··· <i>A</i> | <i>D</i> ··· <i>A</i> | <i>D</i> –H··· <i>A</i> |
|--------------------------|-------------|---------------|-----------------------|-------------------------|
| N1–H1A···O1 ¹ | 0.83 (3) | 2.11 (3) | 2.927 (2) | 170 (2) |
| C1–H1···O1 ¹ | 0.93 | 2.50 | 3.350 (3) | 152 |

Symmetry code: (i) *x*, –*y* + $\frac{1}{2}$, *z* – $\frac{1}{2}$.

Data collection: *SMART* (Bruker, 2007); cell refinement: *SAINTE* (Bruker, 2007); data reduction: *SAINTE*; program(s) used to solve structure: *SHELXS97* (Sheldrick, 2008); program(s) used to refine structure: *SHELXL97* (Sheldrick, 2008); molecular graphics: *SHELXTL* (Sheldrick, 2008); software used to prepare material for publication: *SHELXTL*, *PLATON* (Spek, 2009) and *pubCIF* (Westrip, 2010).

Acknowledgements

The authors thank the Universiti Kebangsaan Malaysia (UKM) for financial support *via* research grants DIP-2012-11, DLP-2013-001, DPP-2013-043 and DPP-2014-048, and the Ministry of Education, Malaysia for grant FRGS/1/2014/ST01/UKM/02/2.

Supporting information for this paper is available from the IUCr electronic archives (Reference: SU5083).

References

- Al-abbasi, A. A., Mohamed Tahir, M. I. & Kassim, M. B. (2011). *Acta Cryst.* **E67**, o3414.
- Al-abbasi, A. A., Mohamed Tahir, M. I. & Kassim, M. B. (2012). *Acta Cryst.* **E68**, o201.
- Arslan, H., Florke, U., Kulcu, N. & Kayhan, E. (2006). *Turk. J. Chem.* **30**, 429–440.
- Bruker (2007). *SMART, SAINT and SADABS*. Bruker AXS Inc., Madison, Wisconsin, USA.
- Cikla, P., Kucukguzel, S. G., Kucukguzel, I., Rollas, S., Clercq, E. D., Pannecouque, C., Andrei, G., Snoeck, R., Sahin, F. & Bayrak, O. F. (2010). *Pharm. J.* **14**, 13–20.
- Hassan, I. N., Yamin, B. M. & Kassim, M. B. (2008). *Acta Cryst.* **E64**, o2083.
- Hassan, I. N., Yamin, B. M. & Kassim, M. B. (2009). *Acta Cryst.* **E65**, o3078.
- Kulcu, N., Florke, U. & Arslan, H. (2005). *Turk. J. Chem.* **29**, 1–6.
- Md Nasir, M. F., Hassan, I. N., Yamin, B. M., Daud, W. R. W. & Kassim, M. B. (2011). *Acta Cryst.* **E67**, o1947–o1948.
- Rodríguez-Fernández, E., Manzano, J. L., Benito, J. J., Hermosa, R., Monte, E. & Criado, J. J. (2005). *J. Inorg. Biochem.* **99**, 1558–1572.
- Sheldrick, G. M. (2008). *Acta Cryst.* **A64**, 112–122.
- Spek, A. L. (2009). *Acta Cryst.* **D65**, 148–155.
- Tan, S. S., Al-abbasi, A. A., Mohamed Tahir, M. I. & Kassim, M. B. (2014). *Polyhedron*, **68**, 287–294.
- Westrip, S. P. (2010). *J. Appl. Cryst.* **43**, 920–925.

supporting information

Acta Cryst. (2015). E71, o225–o226 [doi:10.1107/S2056989015003813]

Crystal structure of 4-methoxy-*N*-[(pyrrolidin-1-yl)carbothioyl]benzamide

Khairi Suhud, Lee Yook Heng, Siti Aishah Hasbullah, Musa Ahmad and Mohammad B. Kassim

S1. Synthesis and crystallization

Benzoyl chloride (0.01 mol) was slowly added to ammonium thiocyanate (0.01 mol) in acetone and the mixture was stirred for 30 min at room temperature. A white precipitate of ammonium chloride was filtered off. The filtrate was cooled in an ice bath (278–283 K) for about 15 min. Then, a cold solution (5–10°C) of pyrrolidine (0.01 mol) in acetone was added to the benzoyl isothiocyanate and the mixture was left for 3 h at room temperature. A yellowish solution was formed and the mixture was filtered into a beaker containing some ice cubes. The yellow residue was washed with cold water followed pale-yellow block-like crystals (yield: 85%; m.p. 397–399 K). IR(KBr, cm⁻¹) ν (-NH) 3389; (O—CH₃) = 2967; ν (C=O_{aliphatic}) = 1716, ν (C—C_{benzene}) = 1651 and 1424; ν (C=O_{stretching}) = 1311 and ν (C=S) = 1210 cm⁻¹.

S2. Refinement

Crystal data, data collection and structure refinement details are summarized in Table 3. The NH H atom, H1A, was located in a difference Fourier map and freely refined. The C-bound H atoms were included in calculated positions and treated as riding atoms: C—H = 0.93 – 0.97 Å with $U_{\text{iso}}(\text{H}) = 1.5U_{\text{eq}}(\text{C})$ for methyl H atoms and = $1.2U_{\text{eq}}(\text{C})$ for other H atoms.

S3. Comment

The title compound, is a derivative of a thiourea compound containing a carbonothioyl $R\text{-C}(=\text{O})\text{-N}(\text{H})\text{-C}(=\text{S})\text{-N}$ functional group (Arslan *et al.*, 2006), where R can be either alkyl or aryl group. The C=O and C=S groups can serve as coordination sites upon reaction with metal ions. Such complexes have been found to be biologically active, for example anti-bacterial, anti-fungal (Rodríguez-Fernandez *et al.*, 2005), and anti-cancer (Cikla *et al.*, 2010). The title compound is similar to the previously reported derivatives namely 1,1-diethyl-3-(4-methoxybenzoyl)thiourea (Al-abbasi *et al.*, 2011) and 3-(3-methoxybenzoyl)-1,1-diphenylthiourea (Md Nasir *et al.*, 2011).

Reaction of these organic compounds *cis*-bis[4-chloro-*N*-(pyrrolidine-1-carbothioyl)-benzamido] with Cu(II) formed a stable complex compound with a 1:2 ratio. The complex was tested for anti-bacterial activity (Kulcu *et al.*, 2005). Similarly, a 1:3 ratio between copper(II)acetate and 1-benzoyl-(3,3-disubstituted)thiourea derivatives gave a series of copper(III) complexes in which the 1-benzoyl-(3,3-disubstituted)thiourea derivatives were deprotonated prior to the complexation reaction. Hence, 1-benzoyl-(3,3-disubstituted)thiourea derivatives behaved as a bidentate chelate through (O,S) coordination to give neutral cobalt(III) complexes (Tan *et al.*, 2014). Herein we report on the crystal structure of the title compound (MPCB), and compare it to previously reported carbonyl thioureas.

In the title compound, Fig. 1, the 4-methoxybenzoyl and pyrrolidine fragments adopting a *trans-cis* conformation with respect to the thiono S atom across the C8—N1 bond. The pyrrolidine ring (N2/C2-C9) has a twisted conformation on the C10-C11 bond. The benzamide fragment (C1-C7/O1/N1) is approximately planar with a maximum deviation for atom O1 [0.045 (2)°], and it is twisted with respect to the thiourea fragment (S1/N1/N2/C8/C12) [maximum deviation of

-0.034 (2)° for N2] with a dihedral angle of 61.81 (7)°.

The C=O [1.220 (2) Å] and C=S [1.662 (2) Å] bond lengths are comparable to those reported for propyl 2-(3-benzoylthioureido)acetate [1.220 (3) Å, 1.658 (3) Å, respectively] (Hassan *et al.*, 2008) and methyl 2-(3-benzoylthioureido)acetate [1.223 (5) Å, 1.661 (4) Å, respectively] (Hassan *et al.*, 2009). Other bond lengths and angles in the molecule are comparable those reported for N-(pyrrolidin-1-ylcarbothioyl) benzamide (Al-abbasi *et al.*, 2012).

In the crystal, molecules are linked by bifurcated N-H···O and C-H···O hydrogen bond forming chains along the *c*-axis direction (Table 1 and Fig. 2). Further stabilization is afforded by slipped parallel π - π stacking interactions involving the (C1-C6) benzene ring [$Cg1\cdots Cg1^i = 3.7578$ (13) Å; inter-planar distance = 3.6228 (9) Å; slippage = 0.998 Å; symmetry code: (i) -x,+2, -y+1, -z], forming undulating slabs parallel to (100).

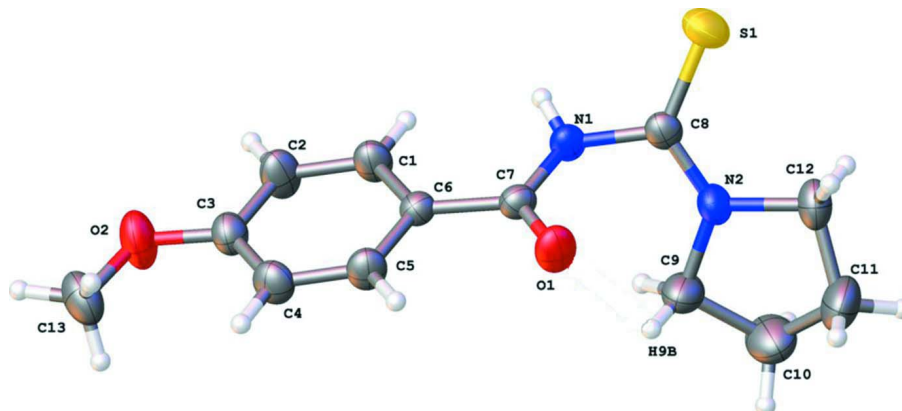


Figure 1

A view of the molecular structure of the title compound, with atom labelling. Displacement ellipsoids are drawn at the 50% probability level.

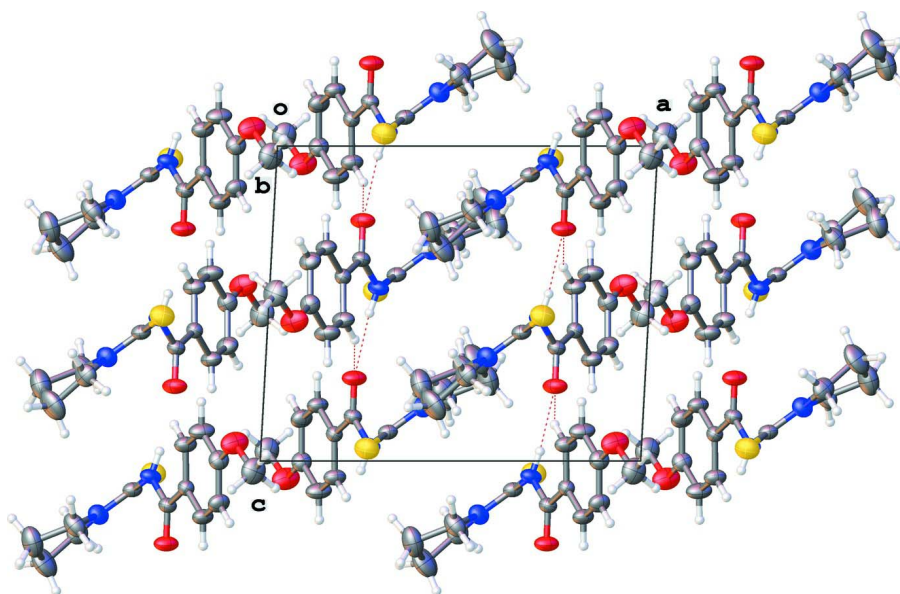


Figure 2

A view along the *x* axis of the crystal packing of the title compound. Hydrogen bonds are shown as dashed lines (see Table 1 for details).

4-Methoxy-*N*-[(pyrrolidin-1-yl)carbothioyl]benzamide

Crystal data

C₁₃H₁₆N₂O₂S $M_r = 264.34$ Monoclinic, $P2_1/c$

Hall symbol: -P 2ybc

 $a = 11.8548$ (12) Å $b = 11.4463$ (11) Å $c = 9.8317$ (9) Å $\beta = 93.124$ (3)° $V = 1332.1$ (2) Å³ $Z = 4$ $F(000) = 560$ $D_x = 1.318$ Mg m⁻³

Melting point = 397–399 K

Mo $K\alpha$ radiation, $\lambda = 0.71073$ Å $\theta = 3.2$ – 26.5 ° $\mu = 0.24$ mm⁻¹ $T = 296$ K

Block, pale-yellow

 $0.50 \times 0.41 \times 0.15$ mm

Data collection

Bruker SMART APEX CCD area-detector
diffractometer

Radiation source: fine-focus sealed tube

Graphite monochromator

 ω scanAbsorption correction: multi-scan
(*SADABS*; Bruker, 2007) $T_{\min} = 0.890$, $T_{\max} = 0.965$

17732 measured reflections

2763 independent reflections

2140 reflections with $I > 2\sigma(I)$ $R_{\text{int}} = 0.043$ $\theta_{\max} = 26.5$ °, $\theta_{\min} = 3.2$ ° $h = -14 \rightarrow 14$ $k = -14 \rightarrow 14$ $l = -12 \rightarrow 12$

Refinement

Refinement on F^2

Least-squares matrix: full

 $R[F^2 > 2\sigma(F^2)] = 0.049$ $wR(F^2) = 0.130$ $S = 1.07$

2763 reflections

169 parameters

0 restraints

Primary atom site location: structure-invariant
direct methodsSecondary atom site location: difference Fourier
mapHydrogen site location: inferred from
neighbouring sitesH atoms treated by a mixture of independent
and constrained refinement $w = 1/[\sigma^2(F_o^2) + (0.0485P)^2 + 1.055P]$ where $P = (F_o^2 + 2F_c^2)/3$ $(\Delta/\sigma)_{\max} < 0.001$ $\Delta\rho_{\max} = 0.26$ e Å⁻³ $\Delta\rho_{\min} = -0.23$ e Å⁻³Extinction correction: *SHELXL97* (Sheldrick,
2008), $F_c^* = kF_c[1 + 0.001x F_c^2 \lambda^3 / \sin(2\theta)]^{-1/4}$

Extinction coefficient: 0.031 (3)

Special details

Geometry. All e.s.d.'s (except the e.s.d. in the dihedral angle between two l.s. planes) are estimated using the full covariance matrix. The cell e.s.d.'s are taken into account individually in the estimation of e.s.d.'s in distances, angles and torsion angles; correlations between e.s.d.'s in cell parameters are only used when they are defined by crystal symmetry. An approximate (isotropic) treatment of cell e.s.d.'s is used for estimating e.s.d.'s involving l.s. planes.

Refinement. Refinement of F^2 against ALL reflections. The weighted R -factor wR and goodness of fit S are based on F^2 , conventional R -factors R are based on F , with F set to zero for negative F^2 . The threshold expression of $F^2 > \sigma(F^2)$ is used only for calculating R -factors(gt) *etc.* and is not relevant to the choice of reflections for refinement. R -factors based on F^2 are statistically about twice as large as those based on F , and R -factors based on ALL data will be even larger.

Fractional atomic coordinates and isotropic or equivalent isotropic displacement parameters (Å²)

| | <i>x</i> | <i>y</i> | <i>z</i> | $U_{\text{iso}}^*/U_{\text{eq}}$ |
|----|--------------|--------------|---------------|----------------------------------|
| S1 | 0.72135 (6) | 0.00137 (5) | 0.03914 (6) | 0.0491 (2) |
| O1 | 0.76464 (14) | 0.29334 (14) | 0.26290 (14) | 0.0456 (4) |
| O2 | 0.93009 (16) | 0.73574 (15) | -0.05668 (17) | 0.0582 (5) |

| | | | | |
|------|--------------|--------------|--------------|------------|
| N1 | 0.71420 (15) | 0.23446 (15) | 0.04921 (17) | 0.0345 (4) |
| N2 | 0.58223 (15) | 0.13540 (14) | 0.17024 (18) | 0.0383 (4) |
| C1 | 0.80147 (19) | 0.45074 (19) | -0.0520 (2) | 0.0386 (5) |
| H1 | 0.7689 | 0.3985 | -0.1151 | 0.046* |
| C2 | 0.8420 (2) | 0.5562 (2) | -0.0950 (2) | 0.0472 (6) |
| H2 | 0.8365 | 0.5748 | -0.1872 | 0.057* |
| C3 | 0.89105 (18) | 0.63501 (18) | -0.0028 (2) | 0.0387 (5) |
| C4 | 0.89724 (19) | 0.60796 (19) | 0.1342 (2) | 0.0421 (5) |
| H4 | 0.9283 | 0.6610 | 0.1973 | 0.051* |
| C5 | 0.85703 (19) | 0.50171 (18) | 0.1772 (2) | 0.0383 (5) |
| H5 | 0.8623 | 0.4834 | 0.2695 | 0.046* |
| C6 | 0.80889 (15) | 0.42189 (16) | 0.08530 (18) | 0.0290 (4) |
| C7 | 0.76284 (16) | 0.31244 (17) | 0.14072 (18) | 0.0310 (4) |
| C8 | 0.66841 (17) | 0.12705 (17) | 0.09137 (18) | 0.0320 (4) |
| C9 | 0.5215 (2) | 0.2428 (2) | 0.2040 (3) | 0.0504 (6) |
| H9A | 0.5074 | 0.2912 | 0.1240 | 0.060* |
| H9B | 0.5640 | 0.2877 | 0.2731 | 0.060* |
| C10 | 0.4126 (2) | 0.1985 (3) | 0.2569 (4) | 0.0705 (8) |
| H10A | 0.3559 | 0.1871 | 0.1832 | 0.085* |
| H10B | 0.3835 | 0.2521 | 0.3229 | 0.085* |
| C11 | 0.4468 (3) | 0.0836 (3) | 0.3227 (4) | 0.0747 (9) |
| H11A | 0.4820 | 0.0959 | 0.4129 | 0.090* |
| H11B | 0.3819 | 0.0329 | 0.3299 | 0.090* |
| C12 | 0.5294 (2) | 0.0320 (2) | 0.2289 (3) | 0.0469 (6) |
| H12A | 0.5851 | -0.0159 | 0.2787 | 0.056* |
| H12B | 0.4910 | -0.0150 | 0.1585 | 0.056* |
| C13 | 0.9838 (2) | 0.8187 (2) | 0.0323 (3) | 0.0582 (7) |
| H13A | 0.9295 | 0.8506 | 0.0911 | 0.087* |
| H13B | 1.0149 | 0.8804 | -0.0202 | 0.087* |
| H13C | 1.0433 | 0.7813 | 0.0863 | 0.087* |
| H1A | 0.734 (2) | 0.234 (2) | -0.030 (3) | 0.048 (7)* |

Atomic displacement parameters (Å²)

| | U^{11} | U^{22} | U^{33} | U^{12} | U^{13} | U^{23} |
|----|-------------|-------------|-------------|--------------|--------------|-------------|
| S1 | 0.0650 (4) | 0.0340 (3) | 0.0487 (4) | 0.0064 (3) | 0.0070 (3) | -0.0051 (2) |
| O1 | 0.0643 (10) | 0.0483 (9) | 0.0242 (7) | -0.0124 (8) | 0.0019 (6) | 0.0034 (6) |
| O2 | 0.0803 (12) | 0.0404 (9) | 0.0530 (10) | -0.0216 (9) | -0.0036 (9) | 0.0101 (7) |
| N1 | 0.0480 (10) | 0.0322 (9) | 0.0237 (8) | -0.0064 (7) | 0.0070 (7) | -0.0009 (7) |
| N2 | 0.0454 (10) | 0.0273 (8) | 0.0427 (10) | -0.0038 (7) | 0.0077 (8) | 0.0025 (7) |
| C1 | 0.0527 (13) | 0.0360 (11) | 0.0267 (10) | -0.0074 (9) | -0.0005 (9) | -0.0014 (8) |
| C2 | 0.0712 (16) | 0.0421 (12) | 0.0279 (10) | -0.0107 (11) | -0.0019 (10) | 0.0062 (9) |
| C3 | 0.0428 (11) | 0.0319 (10) | 0.0415 (12) | -0.0035 (9) | 0.0028 (9) | 0.0038 (9) |
| C4 | 0.0489 (12) | 0.0407 (12) | 0.0360 (11) | -0.0089 (10) | -0.0033 (9) | -0.0059 (9) |
| C5 | 0.0473 (12) | 0.0423 (12) | 0.0250 (9) | -0.0068 (9) | -0.0010 (8) | -0.0006 (8) |
| C6 | 0.0293 (9) | 0.0306 (9) | 0.0271 (9) | 0.0000 (7) | 0.0030 (7) | 0.0001 (7) |
| C7 | 0.0350 (10) | 0.0332 (10) | 0.0251 (9) | 0.0007 (8) | 0.0039 (7) | 0.0004 (7) |
| C8 | 0.0405 (11) | 0.0317 (10) | 0.0236 (9) | -0.0024 (8) | -0.0011 (8) | -0.0005 (7) |

| | | | | | | |
|-----|-------------|-------------|-------------|--------------|--------------|--------------|
| C9 | 0.0539 (14) | 0.0379 (12) | 0.0614 (15) | 0.0057 (10) | 0.0207 (11) | 0.0027 (11) |
| C10 | 0.0517 (15) | 0.0604 (17) | 0.101 (2) | 0.0007 (13) | 0.0229 (15) | -0.0096 (16) |
| C11 | 0.0720 (19) | 0.0608 (17) | 0.095 (2) | -0.0163 (15) | 0.0387 (17) | 0.0083 (16) |
| C12 | 0.0486 (13) | 0.0379 (11) | 0.0543 (14) | -0.0136 (10) | 0.0037 (11) | 0.0074 (10) |
| C13 | 0.0617 (16) | 0.0372 (13) | 0.0752 (18) | -0.0113 (11) | -0.0010 (13) | -0.0021 (12) |

Geometric parameters (Å, °)

| | | | |
|-----------|-------------|---------------|-------------|
| S1—C8 | 1.662 (2) | C5—C6 | 1.386 (3) |
| O1—C7 | 1.220 (2) | C5—H5 | 0.9300 |
| O2—C3 | 1.361 (2) | C6—C7 | 1.482 (3) |
| O2—C13 | 1.418 (3) | C9—C10 | 1.505 (4) |
| N1—C7 | 1.372 (2) | C9—H9A | 0.9700 |
| N1—C8 | 1.415 (2) | C9—H9B | 0.9700 |
| N1—H1A | 0.83 (3) | C10—C11 | 1.512 (4) |
| N2—C8 | 1.319 (3) | C10—H10A | 0.9700 |
| N2—C12 | 1.471 (3) | C10—H10B | 0.9700 |
| N2—C9 | 1.472 (3) | C11—C12 | 1.502 (4) |
| C1—C2 | 1.375 (3) | C11—H11A | 0.9700 |
| C1—C6 | 1.387 (3) | C11—H11B | 0.9700 |
| C1—H1 | 0.9300 | C12—H12A | 0.9700 |
| C2—C3 | 1.384 (3) | C12—H12B | 0.9700 |
| C2—H2 | 0.9300 | C13—H13A | 0.9600 |
| C3—C4 | 1.380 (3) | C13—H13B | 0.9600 |
| C4—C5 | 1.381 (3) | C13—H13C | 0.9600 |
| C4—H4 | 0.9300 | | |
| C3—O2—C13 | 118.55 (19) | N2—C9—C10 | 103.63 (19) |
| C7—N1—C8 | 121.83 (16) | N2—C9—H9A | 111.0 |
| C7—N1—H1A | 119.3 (18) | C10—C9—H9A | 111.0 |
| C8—N1—H1A | 114.0 (18) | N2—C9—H9B | 111.0 |
| C8—N2—C12 | 122.12 (18) | C10—C9—H9B | 111.0 |
| C8—N2—C9 | 126.67 (17) | H9A—C9—H9B | 109.0 |
| C12—N2—C9 | 111.08 (17) | C9—C10—C11 | 103.0 (2) |
| C2—C1—C6 | 120.23 (19) | C9—C10—H10A | 111.2 |
| C2—C1—H1 | 119.9 | C11—C10—H10A | 111.2 |
| C6—C1—H1 | 119.9 | C9—C10—H10B | 111.2 |
| C1—C2—C3 | 120.82 (19) | C11—C10—H10B | 111.2 |
| C1—C2—H2 | 119.6 | H10A—C10—H10B | 109.1 |
| C3—C2—H2 | 119.6 | C12—C11—C10 | 104.4 (2) |
| O2—C3—C4 | 124.7 (2) | C12—C11—H11A | 110.9 |
| O2—C3—C2 | 115.90 (19) | C10—C11—H11A | 110.9 |
| C4—C3—C2 | 119.41 (19) | C12—C11—H11B | 110.9 |
| C3—C4—C5 | 119.72 (19) | C10—C11—H11B | 110.9 |
| C3—C4—H4 | 120.1 | H11A—C11—H11B | 108.9 |
| C5—C4—H4 | 120.1 | N2—C12—C11 | 103.30 (19) |
| C4—C5—C6 | 121.15 (19) | N2—C12—H12A | 111.1 |
| C4—C5—H5 | 119.4 | C11—C12—H12A | 111.1 |

| | | | |
|--------------|--------------|----------------|--------------|
| C6—C5—H5 | 119.4 | N2—C12—H12B | 111.1 |
| C5—C6—C1 | 118.65 (18) | C11—C12—H12B | 111.1 |
| C5—C6—C7 | 117.66 (17) | H12A—C12—H12B | 109.1 |
| C1—C6—C7 | 123.61 (17) | O2—C13—H13A | 109.5 |
| O1—C7—N1 | 120.88 (18) | O2—C13—H13B | 109.5 |
| O1—C7—C6 | 121.76 (18) | H13A—C13—H13B | 109.5 |
| N1—C7—C6 | 117.32 (16) | O2—C13—H13C | 109.5 |
| N2—C8—N1 | 115.53 (17) | H13A—C13—H13C | 109.5 |
| N2—C8—S1 | 124.18 (15) | H13B—C13—H13C | 109.5 |
| N1—C8—S1 | 120.28 (15) | | |
| | | | |
| C6—C1—C2—C3 | 0.2 (4) | C5—C6—C7—N1 | 179.28 (18) |
| C13—O2—C3—C4 | 1.7 (4) | C1—C6—C7—N1 | 2.5 (3) |
| C13—O2—C3—C2 | -178.4 (2) | C12—N2—C8—N1 | -176.49 (18) |
| C1—C2—C3—O2 | 178.9 (2) | C9—N2—C8—N1 | 8.0 (3) |
| C1—C2—C3—C4 | -1.2 (4) | C12—N2—C8—S1 | 4.8 (3) |
| O2—C3—C4—C5 | -178.5 (2) | C9—N2—C8—S1 | -170.72 (18) |
| C2—C3—C4—C5 | 1.5 (3) | C7—N1—C8—N2 | 63.0 (3) |
| C3—C4—C5—C6 | -0.9 (3) | C7—N1—C8—S1 | -118.27 (18) |
| C4—C5—C6—C1 | -0.1 (3) | C8—N2—C9—C10 | 162.6 (2) |
| C4—C5—C6—C7 | -177.08 (19) | C12—N2—C9—C10 | -13.4 (3) |
| C2—C1—C6—C5 | 0.5 (3) | N2—C9—C10—C11 | 31.6 (3) |
| C2—C1—C6—C7 | 177.3 (2) | C9—C10—C11—C12 | -38.8 (3) |
| C8—N1—C7—O1 | -2.6 (3) | C8—N2—C12—C11 | 173.3 (2) |
| C8—N1—C7—C6 | 179.56 (17) | C9—N2—C12—C11 | -10.5 (3) |
| C5—C6—C7—O1 | 1.5 (3) | C10—C11—C12—N2 | 30.2 (3) |
| C1—C6—C7—O1 | -175.3 (2) | | |

Hydrogen-bond geometry (Å, °)

| <i>D</i> —H \cdots <i>A</i> | <i>D</i> —H | H \cdots <i>A</i> | <i>D</i> \cdots <i>A</i> | <i>D</i> —H \cdots <i>A</i> |
|---------------------------------|-------------|---------------------|----------------------------|-------------------------------|
| N1—H1A \cdots O1 ⁱ | 0.83 (3) | 2.11 (3) | 2.927 (2) | 170 (2) |
| C1—H1 \cdots O1 ⁱ | 0.93 | 2.50 | 3.350 (3) | 152 |

Symmetry code: (i) *x*, $-\gamma+1/2$, *z*-1/2.