

Crystal structure of 3-[[4-(2-methoxyphenyl)-piperazin-1-yl]methyl]-5-(thiophen-2-yl)-1,3,4-oxadiazole-2(3*H*)-thione

Monirah A. Al-Shaikh,^a Hatem A. Abuelizz,^b Ali A. El-Emam,^{b†} Mohammed S. M. Abdelbaky^c and Santiago Garcia-Granda^{c*}

Received 3 January 2016
Accepted 17 January 2016

Edited by H. Stoeckli-Evans, University of Neuchâtel, Switzerland

† Additional correspondence author, e-mail: elemam5@hotmail.com.

Keywords: crystal structure; 1,3,4-oxadiazole; thiophene; piperazine; disorder; hydrogen bonding

CCDC reference: 1447823

Supporting information: this article has supporting information at journals.iucr.org/e

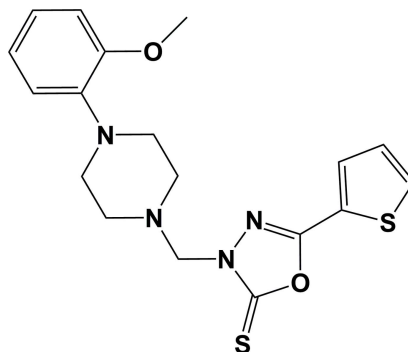
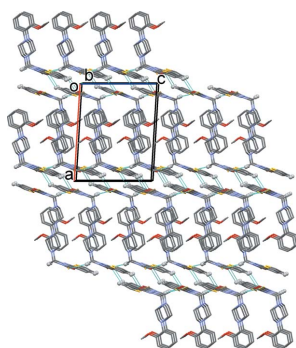
^aDepartment of Chemistry, College of Sciences, King Saud University, Riyadh 11451, Saudi Arabia, ^bDepartment of Pharmaceutical Chemistry, College of Pharmacy, King Saud University, Riyadh 11451, Saudi Arabia, and ^cDepartment of Physical and Analytical Chemistry, Faculty of Chemistry, Oviedo University-CINN, Oviedo 33006, Spain.

*Correspondence e-mail: sgg@uniovi.es

The title compound, C₁₈H₂₀N₄O₂S₂, is a new 1,3,4-oxadiazole and a key pharmacophore of several biologically active agents. It is composed of a methyl(thiophen-2-yl)-1,3,4-oxadiazole-2(3*H*)-thione moiety linked to a 2-methoxyphenyl unit *via* a piperazine ring that has a chair conformation. The thiophene ring mean plane lies almost in the plane of the oxadiazole ring, with a dihedral angle of 4.35 (9)°. The 2-methoxyphenyl ring is almost normal to the oxadiazole ring, with a dihedral angle of 84.17 (10)°. In the crystal, molecules are linked by weak C—H···S hydrogen bonds and C—H···π interactions, forming layers parallel to the *bc* plane. The layers are linked *via* weak C—H···O hydrogen bonds and slipped parallel π–π interactions [intercentroid distance = 3.6729 (10) Å], forming a three-dimensional structure. The thiophene ring has an approximate 180° rotational disorder about the bridging C—C bond.

1. Chemical context

1,3,4-Oxadiazole derivatives are structural motifs of particular value in material sciences (Zhang *et al.*, 2011) and agrochemistry (Shi *et al.*, 2001; Milinkevich *et al.*, 2009; Li *et al.*, 2014). In addition, they occupy a unique situation in the field of medicinal chemistry as pharmacophores possessing diverse pharmacological activities including antibacterial (Ogata *et al.*, 1971; Rane *et al.*, 2012; Al-Omar, 2010), anticancer (Pinna *et al.*, 2009; Gamal El-Din *et al.*, 2015; Zhang *et al.*, 2014; Du *et al.*, 2013), antiviral (Summa *et al.*, 2008; Wu *et al.*, 2015; El-Emam *et al.*, 2004), antihypertensive (Vardan *et al.*, 1983; Schlecker & Thieme, 1988), anti-inflammatory (Bansal *et al.*, 2014; Kadi *et al.*, 2007) and anti-oxidant (Ma *et al.*, 2013) activities. In continuation to our previous studies on 1,3,4-oxadiazoles (El-Emam *et al.*, 2012), we report herein on the synthesis and crystal structure of the title compound.



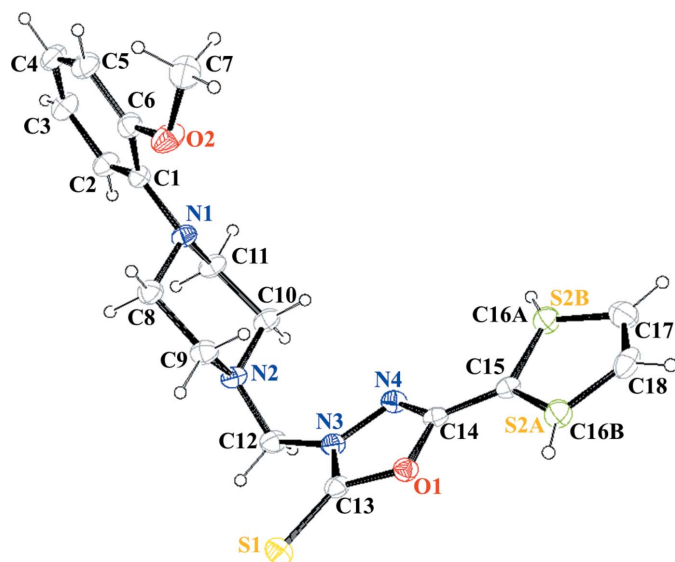


Figure 1
The molecular structure of the title compound, showing the atom-labelling scheme and displacement ellipsoids at the 50% probability level. The thiophene ring has an approximate 180° rotational disorder about the bridging C—C bond.

2. Structural commentary

The title compound, Fig. 1, is composed of a methyl(thiophen-2-yl)-1,3,4-oxadiazole-2(3*H*)-thione moiety linked to a 2-methoxyphenyl unit *via* a bridging piperazine ring. The molecule is V-shaped with the mean plane of the piperazine ring, that has a chair conformation, making dihedral angles of 51.2 (1) and 77.8 (1)° with the 2-methoxyphenyl ring and the oxadiazole ring, respectively. The thiophene ring mean plane lies almost in the plane of the oxadiazole ring, with a dihedral angle of 4.35 (9)°. The thiophene ring has an approximate 180° rotational disorder about the bridging C14—C15 bond.

3. Supramolecular features

In the crystal, molecules are linked by weak C—H···S hydrogen bonds and C—H··· π interactions, forming layers in the *bc* plane (Table 1 and Fig. 2). The layers are linked *via* C—H···O hydrogen bonds and slipped parallel π — π interactions [$Cg3 \cdots Cg1^i = 3.6729$ (10) Å, inter-planar distance = 3.4757 (7) Å, slippage = 0.967 Å; $Cg1$ and $Cg3$ are the centroids of the S2A/C15/C16A/C17/C18 and O1/N3/N4/C13/C14 rings, respectively; symmetry code (i): $-x + 2, -y + 1, -z + 2$], forming a three-dimensional structure (Table 1 and Fig. 2).

4. Database survey

A search of the Cambridge Structural Database (Version 5.37, last update November 2015; Groom & Allen, 2014) for the 3-methyl-5-(thiophen-2-yl)-1,3,4-oxadiazole-2(3*H*)-thione moiety of the title compound gave three hits. Two of these compounds also contain a substituted piperazine ring, namely

Table 1
Hydrogen-bond geometry (Å, °).

$Cg1$ is the centroid of the S2A/C15/C16A/C17/C18 ring.

| <i>D</i> —H··· <i>A</i> | <i>D</i> —H | H··· <i>A</i> | <i>D</i> ··· <i>A</i> | <i>D</i> —H··· <i>A</i> |
|----------------------------|-------------|---------------|-----------------------|-------------------------|
| C12—H12A···S1 ⁱ | 0.97 | 2.95 | 3.860 (2) | 157 |
| C17—H17···O1 ⁱⁱ | 0.93 | 2.69 | 3.475 (2) | 143 |
| C5—H5··· $Cg1^{iii}$ | 0.93 | 2.95 | 3.660 (2) | 135 |

Symmetry codes: (i) $x, -y + \frac{1}{2}, z - \frac{1}{2}$; (ii) $-x + 2, y + \frac{1}{2}, -z + \frac{3}{2}$; (iii) $-x + 1, -y + 1, -z + 2$.

3-[(4-phenylpiperazin-1-yl)methyl]-5-(2-thienyl)-1,3,4-oxadiazole-2(3*H*)-thione (IDOBUA; El-Emam *et al.*, 2013) and 3-[(4-benzylpiperazin-1-yl)methyl]-5-(thiophen-2-yl)-2,3-dihydro-1,3,4-oxadiazole-2-thione (VUBYUO; Al-Omary *et al.*, 2015). In both of these molecules, the conformation is very similar to that of the title compound.

5. Synthesis and crystallization

To a solution of 5-(thiophen-2-yl)-1,3,4-oxadiazole-2-thiol (920 mg, 5 mmol), in ethanol (15 ml), 1-(2-methoxyphenyl)-piperazine (960 mg, 5 mmol) and 37% formaldehyde solution (1.0 ml) were added and the mixture was stirred at room temperature for 3 h and then allowed to stand overnight at

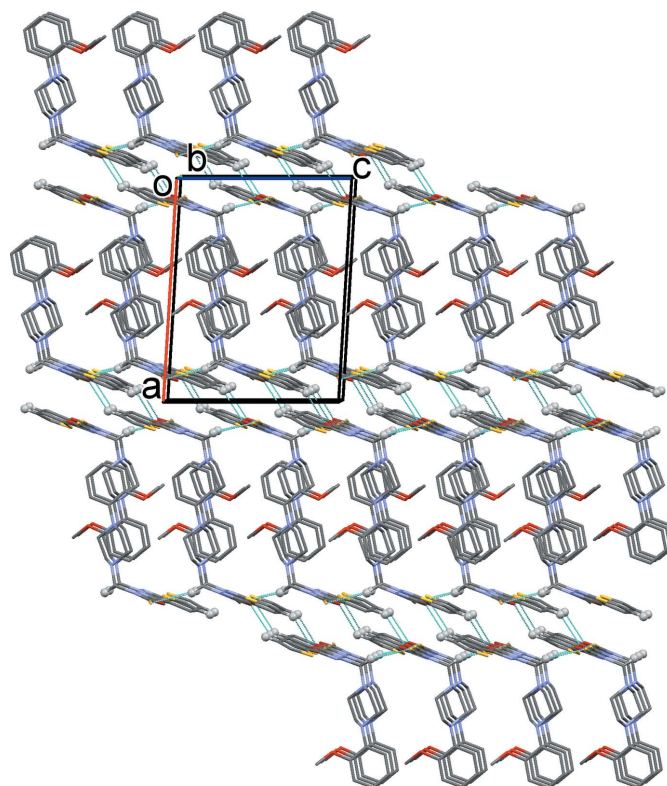


Figure 2
Crystal packing of the title compound, viewed along the *b* axis, showing the C—H···S and C—H···O hydrogen bonds (Table 1) as dashed lines. Only H atoms involved in intermolecular interactions have been included.

Table 2
Experimental details.

| | |
|--|--|
| Crystal data | |
| Chemical formula | C ₁₈ H ₂₀ N ₄ O ₂ S ₂ |
| <i>M</i> _r | 388.5 |
| Crystal system, space group | Monoclinic, <i>P</i> 2 ₁ / <i>c</i> |
| Temperature (K) | 100 |
| <i>a</i> , <i>b</i> , <i>c</i> (Å) | 15.2925 (2), 10.0745 (1), 11.9726 (1) |
| β (°) | 93.413 (1) |
| <i>V</i> (Å ³) | 1841.28 (3) |
| <i>Z</i> | 4 |
| Radiation type | Cu Kα |
| μ (mm ⁻¹) | 2.80 |
| Crystal size (mm) | 0.70 × 0.51 × 0.41 |
| Data collection | |
| Diffraction | Agilent Xcalibur Ruby Gemini |
| Absorption correction | Multi-scan (<i>CrysAlis PRO</i> ; Agilent, 2014) |
| <i>T</i> _{min} , <i>T</i> _{max} | 0.225, 0.315 |
| No. of measured, independent and observed [<i>I</i> > 2σ(<i>I</i>)] reflections | 13494, 3545, 3401 |
| <i>R</i> _{int} | 0.026 |
| (sin θ/λ) _{max} (Å ⁻¹) | 0.612 |
| Refinement | |
| <i>R</i> [<i>F</i> ² > 2σ(<i>F</i> ²)], <i>wR</i> (<i>F</i> ²), <i>S</i> | 0.045, 0.113, 1.04 |
| No. of reflections | 3494 |
| No. of parameters | 230 |
| H-atom treatment | H-atom parameters constrained |
| Δρ _{max} , Δρ _{min} (e Å ⁻³) | 0.95, -0.65 |

Computer programs: *CrysAlis CCD* and *CrysAlis RED* (Oxford Diffraction, 2006), *SHELXS97* and *SHELXL97* (Sheldrick, 2008), *ORTEP-3 for Windows* and *WinGX* (Farrugia, 2012), *Mercury* (Macrae *et al.*, 2008) and *publCIF* (Westrip, 2010).

room temperature. The precipitated crude product was filtered, washed with cold ethanol, dried, and crystallized from ethanol to yield the title compound as pale-yellow prismatic crystals (yield 1.67 g, 86%; m.p. 419–421 K). Single crystals suitable for X-ray analysis were obtained by slow evaporation of a CHCl₃:EtOH solution (1:1; 15 ml) at room temperature. ¹H NMR (CDCl₃, 500.13 MHz): δ 3.10 (s, 8H, piperazine-H), 3.85 (s, 3H, OCH₃), 5.15 (s, 2H, CH₂), 6.85–6.87 (m, 1H, Ar-H), 6.92–6.95 (m, 2H, Ar-H), 7.01–7.03 (m, 1H, Ar-H), 7.18 (t, 1H, thiophene-H, *J* = 4.5 Hz), 7.59 (d, 1H, thiophene-H, *J* = 4.5 Hz), 7.75 (d, 1H, thiophene-H, *J* = 4.5 Hz). ¹³C NMR (CDCl₃, 125.76 MHz): δ 50.43, 50.64 (piperazine-C), 55.33 (OCH₃), 70.44 (CH₂), 111.05, 118.28, 120.94, 123.17, 123.68, 128.32, 130.74, 130.95, 141.09, 152.23 (Ar & thiophene-C), 155.42 (C=N), 177.74 (C=S).

6. Refinement

Crystal data, data collection and structure refinement details are summarized in Table 2. The C-bound H atoms were positioned geometrically and treated as riding atoms: C–H 0.95–0.97 Å with *U*_{iso}(H) = 1.5*U*_{eq}(C-methyl) and 1.2*U*_{eq}(C) for other H atoms. The thienyl ring is disordered over two positions and in the final refinement cycles, the occupancy of atoms *S*2*A* and *C*16*A*, and *S*2*B* and *C*16*B*, were each fixed at 0.5.

Acknowledgements

The authors extend their sincere appreciation to the Deanship of Scientific Research at King Saud University for funding this study through the Research Group Project No. PRG-1436–23. We also acknowledge financial support from the Spanish Ministerio de Economía y Competitividad (MINECO-13-MAT2013–40950-R, FPI grant BES-2011–046948 to MSMA).

References

- Agilent (2014). *CrysAlis PRO*. Agilent Technologies, Yarnton, England.
- Al-Omar, M. A. (2010). *Molecules*, **15**, 502–514.
- Al-Omary, F. A. M., El-Emam, A. A., Ghabbour, H. A., Chidan Kumar, C. S., Quah, C. K. & Fun, H.-K. (2015). *Acta Cryst.* **E71**, o175–o176.
- Bansal, S., Bala, M., Suthar, S. K., Choudhary, S., Bhattacharya, S., Bhardwaj, V., Singla, S. & Joseph, A. (2014). *Eur. J. Med. Chem.* **80**, 167–174.
- Du, Q.-R., Li, D.-D., Pi, Y.-Z., Li, J.-R., Sun, J., Fang, F., Zhong, W.-Q., Gong, H.-B. & Zhu, H.-L. (2013). *Eur. J. Med. Chem.* **21**, 2286–2297.
- El-Emam, A. A., Al-Deeb, O. A., Al-Omar, M. A. & Lehmann, J. (2004). *Bioorg. Med. Chem.* **12**, 5107–5113.
- El-Emam, A. A., Al-Omar, M. A., Al-Obaid, A.-R. M., Ng, S. W. & Tiekink, E. R. T. (2013). *Acta Cryst.* **E69**, o684.
- El-Emam, A. A., El-Brollosy, N. R., Attia, M. I., Said-Abdelbaky, M. & García-Granda, S. (2012). *Acta Cryst.* **E68**, o2172–o2173.
- Farrugia, L. J. (2012). *J. Appl. Cryst.* **45**, 849–854.
- Gamal El-Din, M. M., El-Gamal, M. I., Abdel-Maksoud, M. S., Yoo, K. H. & Oh, C.-H. (2015). *Eur. J. Med. Chem.* **90**, 45–52.
- Groom, C. R. & Allen, F. H. (2014). *Angew. Chem. Int. Ed.* **53**, 662–671.
- Kadi, A. A., El-Brollosy, N. R., Al-Deeb, O. A., Habib, E. E., Ibrahim, T. M. & El-Emam, A. A. (2007). *Eur. J. Med. Chem.* **42**, 235–242.
- Li, P., Shi, L., Yang, X., Yang, L., Chen, X.-W., Wu, F., Shi, Q.-C., Xu, W.-M., He, M., Hu, D.-Y. & Song, B.-A. (2014). *Bioorg. Med. Chem. Lett.* **24**, 1677–1680.
- Ma, L., Xiao, Y., Li, C., Xie, Z.-L., Li, Z.-L., Wang, Y.-T., Ma, H.-T., Zhu, H.-L., Wang, M.-H. & Ye, Y.-H. (2013). *Bioorg. Med. Chem.* **21**, 6763–6770.
- Macrae, C. F., Bruno, I. J., Chisholm, J. A., Edgington, P. R., McCabe, P., Pidcock, E., Rodriguez-Monge, L., Taylor, R., van de Streek, J. & Wood, P. A. (2008). *J. Appl. Cryst.* **41**, 466–470.
- Milinkevich, K. A., Yoo, C. L., Sparks, T. C., Lorsbach, B. A. & Kurth, M. J. (2009). *Bioorg. Med. Chem. Lett.* **19**, 5796–5798.
- Ogata, M., Atobe, H., Kushida, H. & Yamamoto, K. (1971). *J. Antibiot.* **24**, 443–451.
- Oxford Diffraction (2006). *CrysAlis CCD* and *CrysAlis RED*. Oxford Diffraction Ltd, Abingdon, England.
- Pinna, G. A., Murineddu, G., Murrizzu, C., Zucco, V., Zunino, F., Cappelletti, G., Artali, R., Cignarella, G., Solano, L. & Villa, S. (2009). *ChemMedChem*, **4**, 998–1009.
- Rane, R. A., Gutte, S. W. & Sahu, N. U. (2012). *Bioorg. Med. Chem. Lett.* **22**, 6429–6432.
- Schlecker, R. & Thieme, P. C. (1988). *Tetrahedron*, **44**, 3289–3294.
- Sheldrick, G. M. (2008). *Acta Cryst.* **A64**, 112–122.
- Shi, W., Qian, X., Zhang, R. & Song, G. (2001). *J. Agric. Food Chem.* **49**, 124–130.
- Summa, V., Petrocchi, A., Bonelli, F., Crescenzi, B., Donghi, M., Ferrara, M., Fiore, F., Gardelli, C., Gonzalez Paz, O., Hazuda, D. J., Jones, P., Kinzel, O., Laufer, R., Monteagudo, E., Muraglia, E., Nizi, E., Orvieto, F., Pace, P., Pescatore, G., Scarpelli, R., Stillmock, K., Witmer, M. V. & Rowley, M. (2008). *J. Med. Chem.* **51**, 5843–5855.

- Vardan, S., Smulyan, H., Mookherjee, S. & Eich, R. (1983). *Clin. Pharmacol. Ther.* **34**, 290–296.
- Westrip, S. P. (2010). *J. Appl. Cryst.* **43**, 920–925.
- Wu, W., Chen, Q., Tai, A., Jiang, G. & Ouyang, G. (2015). *Bioorg. Med. Chem. Lett.* **25**, 2243–2246.
- Zhang, K., Wang, P., Xuan, L.-N., Fu, X.-Y., Jing, F., Li, S., Liu, Y.-M. & Chen, B.-Q. (2014). *Bioorg. Med. Chem. Lett.* **24**, 5154–5156.
- Zhang, Y., Zuniga, C., Kim, S.-J., Cai, D., Barlow, S., Salman, S., Coropceanu, V., Brédas, J.-L., Kippelen, B. & Marder, S. (2011). *Chem. Mater.* **23**, 4002–4015.

supporting information

Acta Cryst. (2016). E72, 269-272 [doi:10.1107/S2056989016000992]

Crystal structure of 3-[[4-(2-methoxyphenyl)piperazin-1-yl]methyl]-5-(thiophen-2-yl)-1,3,4-oxadiazole-2(3*H*)-thione

Monirah A. Al-Alshaikh, Hatem A. Abuelizz, Ali A. El-Emam, Mohammed S. M. Abdelbaky and Santiago Garcia-Granda

Computing details

Data collection: *CrysAlis CCD* (Oxford Diffraction, 2006); cell refinement: *CrysAlis CCD* (Oxford Diffraction, 2006); data reduction: *CrysAlis RED* (Oxford Diffraction, 2006); program(s) used to solve structure: *SHELXS97* (Sheldrick, 2008); program(s) used to refine structure: *SHELXL97* (Sheldrick, 2008); molecular graphics: *ORTEP-3 for Windows* (Farrugia, 2012) and *Mercury* (Macrae *et al.*, 2008); software used to prepare material for publication: *WinGX* (Farrugia, 2012) and *publCIF* (Westrip, 2010).

3-[[4-(2-Methoxyphenyl)piperazin-1-yl]methyl]-5-(thiophen-2-yl)-1,3,4-oxadiazole-2(3*H*)-thione

Crystal data

$C_{18}H_{20}N_4O_2S_2$

$M_r = 388.5$

Monoclinic, $P2_1/c$

Hall symbol: -P 2ybc

$a = 15.2925$ (2) Å

$b = 10.0745$ (1) Å

$c = 11.9726$ (1) Å

$\beta = 93.413$ (1)°

$V = 1841.28$ (3) Å³

$Z = 4$

$F(000) = 816$

$D_x = 1.401$ Mg m⁻³

Cu $K\alpha$ radiation, $\lambda = 1.54184$ Å

Cell parameters from 11296 reflections

$\theta = 3.7\text{--}70.5^\circ$

$\mu = 2.80$ mm⁻¹

$T = 100$ K

Prism, colourless

$0.70 \times 0.51 \times 0.41$ mm

Data collection

Agilent Xcalibur Ruby Gemini
diffractometer

Radiation source: Enhance (Cu) X-ray Source

Graphite monochromator

Detector resolution: 10.2673 pixels mm⁻¹

ω scans

Absorption correction: multi-scan
(*CrysAlis PRO*; Agilent, 2014)

$T_{\min} = 0.225$, $T_{\max} = 0.315$

13494 measured reflections

3545 independent reflections

3401 reflections with $I > 2\sigma(I)$

$R_{\text{int}} = 0.026$

$\theta_{\max} = 70.7^\circ$, $\theta_{\min} = 5.3^\circ$

$h = -18 \rightarrow 17$

$k = -8 \rightarrow 12$

$l = -14 \rightarrow 14$

Refinement

Refinement on F^2

Least-squares matrix: full

$R[F^2 > 2\sigma(F^2)] = 0.045$

$wR(F^2) = 0.113$

$S = 1.04$

3494 reflections

230 parameters

0 restraints

0 constraints

Primary atom site location: structure-invariant
direct methods
Secondary atom site location: difference Fourier
map
Hydrogen site location: inferred from
neighbouring sites

H-atom parameters constrained
 $w = 1/[\sigma^2(F_o^2) + (0.0574P)^2 + 2.048P]$
where $P = (F_o^2 + 2F_c^2)/3$
 $(\Delta/\sigma)_{\max} < 0.001$
 $\Delta\rho_{\max} = 0.95 \text{ e } \text{\AA}^{-3}$
 $\Delta\rho_{\min} = -0.65 \text{ e } \text{\AA}^{-3}$

Special details

Geometry. All e.s.d.'s (except the e.s.d. in the dihedral angle between two l.s. planes) are estimated using the full covariance matrix. The cell e.s.d.'s are taken into account individually in the estimation of e.s.d.'s in distances, angles and torsion angles; correlations between e.s.d.'s in cell parameters are only used when they are defined by crystal symmetry. An approximate (isotropic) treatment of cell e.s.d.'s is used for estimating e.s.d.'s involving l.s. planes.

Refinement. Refinement of F^2 against ALL reflections. The weighted R -factor wR and goodness of fit S are based on F^2 , conventional R -factors R are based on F , with F set to zero for negative F^2 . The threshold expression of $F^2 > \sigma(F^2)$ is used only for calculating R -factors(gt) *etc.* and is not relevant to the choice of reflections for refinement. R -factors based on F^2 are statistically about twice as large as those based on F , and R -factors based on ALL data will be even larger.

Fractional atomic coordinates and isotropic or equivalent isotropic displacement parameters (\AA^2)

| | <i>x</i> | <i>y</i> | <i>z</i> | $U_{\text{iso}}^*/U_{\text{eq}}$ | Occ. (<1) |
|------|--------------|--------------|--------------|----------------------------------|-------------|
| S1 | 0.89998 (3) | 0.09896 (5) | 0.99378 (4) | 0.02414 (15) | |
| S2A | 0.87403 (4) | 0.74266 (6) | 1.04820 (5) | 0.02497 (16) | 0.7913 (14) |
| C16A | 0.94021 (8) | 0.57554 (13) | 1.21094 (10) | 0.02497 (16) | 0.7913 (14) |
| H16A | 0.9598 | 0.501 | 1.2508 | 0.03* | 0.7913 (14) |
| S2B | 0.94021 (8) | 0.57554 (13) | 1.21094 (10) | 0.02497 (16) | 0.2087 (14) |
| C16B | 0.87403 (4) | 0.74266 (6) | 1.04820 (5) | 0.02497 (16) | 0.2087 (14) |
| H16B | 0.8502 | 0.779 | 0.9817 | 0.03* | 0.2087 (14) |
| O1 | 0.90631 (8) | 0.35048 (13) | 1.06190 (11) | 0.0189 (3) | |
| O2 | 0.43793 (9) | 0.38449 (17) | 0.90935 (12) | 0.0312 (4) | |
| N3 | 0.85646 (10) | 0.33316 (16) | 0.89001 (13) | 0.0192 (3) | |
| N1 | 0.55319 (10) | 0.37224 (16) | 0.74811 (13) | 0.0198 (3) | |
| N4 | 0.85770 (10) | 0.46847 (16) | 0.91387 (13) | 0.0204 (3) | |
| N2 | 0.73225 (10) | 0.29806 (17) | 0.75238 (13) | 0.0210 (3) | |
| C1 | 0.46191 (12) | 0.37565 (18) | 0.71654 (16) | 0.0202 (4) | |
| C15 | 0.90176 (11) | 0.58606 (19) | 1.08927 (15) | 0.0183 (4) | |
| C14 | 0.88737 (11) | 0.47285 (19) | 1.01696 (15) | 0.0180 (4) | |
| C13 | 0.88567 (12) | 0.26006 (19) | 0.97769 (15) | 0.0187 (4) | |
| C6 | 0.40227 (13) | 0.3813 (2) | 0.80197 (17) | 0.0229 (4) | |
| C9 | 0.67626 (13) | 0.2461 (2) | 0.83683 (17) | 0.0237 (4) | |
| H9A | 0.6806 | 0.3025 | 0.9026 | 0.028* | |
| H9B | 0.6955 | 0.1577 | 0.8589 | 0.028* | |
| C11 | 0.61058 (12) | 0.4202 (2) | 0.66366 (16) | 0.0231 (4) | |
| H11A | 0.5908 | 0.5066 | 0.6368 | 0.028* | |
| H11B | 0.6088 | 0.3596 | 0.6007 | 0.028* | |
| C4 | 0.28120 (13) | 0.3853 (2) | 0.66375 (19) | 0.0278 (5) | |
| H4 | 0.2211 | 0.3875 | 0.6463 | 0.033* | |
| C3 | 0.33874 (14) | 0.3826 (2) | 0.57913 (18) | 0.0284 (5) | |
| H3 | 0.3177 | 0.3844 | 0.5046 | 0.034* | |
| C2 | 0.42871 (13) | 0.3770 (2) | 0.60627 (17) | 0.0249 (4) | |
| H2 | 0.4672 | 0.3741 | 0.5491 | 0.03* | |

| | | | | |
|------|--------------|------------|--------------|------------|
| C10 | 0.70379 (12) | 0.4304 (2) | 0.71497 (16) | 0.0228 (4) |
| H10A | 0.7424 | 0.4638 | 0.66 | 0.027* |
| H10B | 0.7058 | 0.4912 | 0.7779 | 0.027* |
| C8 | 0.58162 (13) | 0.2411 (2) | 0.78978 (18) | 0.0240 (4) |
| H8A | 0.5763 | 0.177 | 0.7292 | 0.029* |
| H8B | 0.5441 | 0.2125 | 0.8478 | 0.029* |
| C5 | 0.31283 (13) | 0.3849 (2) | 0.77469 (18) | 0.0275 (5) |
| H5 | 0.2738 | 0.3869 | 0.8313 | 0.033* |
| C12 | 0.82390 (12) | 0.2821 (2) | 0.77866 (15) | 0.0224 (4) |
| H12A | 0.8555 | 0.3268 | 0.7217 | 0.027* |
| H12B | 0.8379 | 0.1883 | 0.7749 | 0.027* |
| C17 | 0.93757 (13) | 0.7167 (2) | 1.24746 (17) | 0.0268 (4) |
| H17 | 0.9571 | 0.7421 | 1.3193 | 0.032* |
| C7 | 0.38537 (15) | 0.4430 (3) | 0.99152 (19) | 0.0342 (5) |
| H7A | 0.4167 | 0.4403 | 1.0634 | 0.051* |
| H7B | 0.3316 | 0.3943 | 0.9947 | 0.051* |
| H7C | 0.3726 | 0.5335 | 0.9715 | 0.051* |
| C18 | 0.90558 (13) | 0.8060 (2) | 1.1716 (2) | 0.0297 (5) |
| H18 | 0.9016 | 0.8961 | 1.1874 | 0.036* |

Atomic displacement parameters (Å²)

| | U^{11} | U^{22} | U^{33} | U^{12} | U^{13} | U^{23} |
|------|-------------|-------------|-------------|--------------|--------------|--------------|
| S1 | 0.0282 (3) | 0.0197 (3) | 0.0246 (3) | 0.00178 (18) | 0.00181 (19) | 0.00051 (18) |
| S2A | 0.0229 (3) | 0.0257 (3) | 0.0265 (3) | -0.0011 (2) | 0.0022 (2) | -0.0008 (2) |
| C16A | 0.0229 (3) | 0.0257 (3) | 0.0265 (3) | -0.0011 (2) | 0.0022 (2) | -0.0008 (2) |
| S2B | 0.0229 (3) | 0.0257 (3) | 0.0265 (3) | -0.0011 (2) | 0.0022 (2) | -0.0008 (2) |
| C16B | 0.0229 (3) | 0.0257 (3) | 0.0265 (3) | -0.0011 (2) | 0.0022 (2) | -0.0008 (2) |
| O1 | 0.0189 (6) | 0.0199 (6) | 0.0177 (6) | 0.0015 (5) | 0.0001 (5) | 0.0003 (5) |
| O2 | 0.0213 (7) | 0.0510 (10) | 0.0218 (7) | -0.0010 (6) | 0.0057 (6) | -0.0044 (6) |
| N3 | 0.0175 (7) | 0.0216 (8) | 0.0184 (8) | 0.0028 (6) | 0.0006 (6) | -0.0007 (6) |
| N1 | 0.0161 (8) | 0.0234 (8) | 0.0201 (8) | 0.0005 (6) | 0.0037 (6) | 0.0027 (6) |
| N4 | 0.0196 (8) | 0.0219 (8) | 0.0197 (8) | 0.0030 (6) | 0.0022 (6) | 0.0002 (6) |
| N2 | 0.0170 (8) | 0.0260 (8) | 0.0201 (8) | 0.0035 (6) | 0.0011 (6) | 0.0002 (7) |
| C1 | 0.0175 (9) | 0.0190 (9) | 0.0244 (10) | -0.0012 (7) | 0.0030 (7) | 0.0003 (7) |
| C15 | 0.0141 (8) | 0.0219 (9) | 0.0191 (9) | 0.0009 (7) | 0.0019 (7) | 0.0014 (7) |
| C14 | 0.0128 (8) | 0.0209 (9) | 0.0204 (9) | 0.0022 (7) | 0.0029 (7) | 0.0023 (7) |
| C13 | 0.0143 (8) | 0.0241 (10) | 0.0182 (9) | 0.0006 (7) | 0.0031 (7) | -0.0016 (7) |
| C6 | 0.0216 (10) | 0.0233 (10) | 0.0239 (10) | -0.0022 (8) | 0.0034 (8) | 0.0000 (8) |
| C9 | 0.0218 (10) | 0.0248 (10) | 0.0245 (10) | 0.0031 (8) | 0.0021 (8) | 0.0047 (8) |
| C11 | 0.0177 (9) | 0.0309 (11) | 0.0211 (9) | 0.0008 (8) | 0.0031 (7) | 0.0060 (8) |
| C4 | 0.0163 (9) | 0.0309 (11) | 0.0360 (11) | -0.0025 (8) | 0.0000 (8) | 0.0014 (9) |
| C3 | 0.0228 (10) | 0.0351 (12) | 0.0267 (10) | -0.0024 (8) | -0.0019 (8) | 0.0032 (9) |
| C2 | 0.0197 (9) | 0.0309 (11) | 0.0246 (10) | -0.0008 (8) | 0.0042 (8) | 0.0010 (8) |
| C10 | 0.0177 (9) | 0.0284 (10) | 0.0224 (9) | -0.0002 (8) | 0.0024 (7) | 0.0055 (8) |
| C8 | 0.0203 (9) | 0.0228 (10) | 0.0290 (10) | -0.0003 (7) | 0.0030 (8) | 0.0035 (8) |
| C5 | 0.0197 (10) | 0.0331 (11) | 0.0307 (11) | -0.0032 (8) | 0.0087 (8) | -0.0001 (9) |
| C12 | 0.0204 (9) | 0.0295 (10) | 0.0174 (9) | 0.0047 (8) | 0.0017 (7) | -0.0042 (8) |

| | | | | | | |
|-----|-------------|-------------|-------------|--------------|------------|--------------|
| C17 | 0.0173 (9) | 0.0420 (12) | 0.0211 (9) | -0.0069 (8) | 0.0027 (7) | -0.0057 (9) |
| C7 | 0.0326 (11) | 0.0442 (13) | 0.0272 (11) | -0.0067 (10) | 0.0117 (9) | -0.0083 (10) |
| C18 | 0.0240 (10) | 0.0230 (10) | 0.0432 (12) | -0.0017 (8) | 0.0102 (9) | -0.0017 (9) |

Geometric parameters (Å, °)

| | | | |
|---------------|-------------|---------------|-------------|
| S1—C13 | 1.647 (2) | C9—H9A | 0.97 |
| S2A—C18 | 1.655 (2) | C9—H9B | 0.97 |
| S2A—C15 | 1.6988 (19) | C11—C10 | 1.522 (3) |
| C16A—C17 | 1.489 (3) | C11—H11A | 0.97 |
| C16A—C15 | 1.542 (2) | C11—H11B | 0.97 |
| C16A—H16A | 0.93 | C4—C3 | 1.381 (3) |
| O1—C14 | 1.369 (2) | C4—C5 | 1.386 (3) |
| O1—C13 | 1.381 (2) | C4—H4 | 0.93 |
| O2—C6 | 1.367 (3) | C3—C2 | 1.396 (3) |
| O2—C7 | 1.434 (3) | C3—H3 | 0.93 |
| N3—C13 | 1.337 (2) | C2—H2 | 0.93 |
| N3—N4 | 1.393 (2) | C10—H10A | 0.97 |
| N3—C12 | 1.487 (2) | C10—H10B | 0.97 |
| N1—C1 | 1.425 (2) | C8—H8A | 0.97 |
| N1—C11 | 1.460 (2) | C8—H8B | 0.97 |
| N1—C8 | 1.469 (2) | C5—H5 | 0.93 |
| N4—C14 | 1.290 (2) | C12—H12A | 0.97 |
| N2—C12 | 1.427 (2) | C12—H12B | 0.97 |
| N2—C9 | 1.460 (2) | C17—C18 | 1.349 (3) |
| N2—C10 | 1.464 (3) | C17—H17 | 0.93 |
| C1—C2 | 1.386 (3) | C7—H7A | 0.96 |
| C1—C6 | 1.412 (3) | C7—H7B | 0.96 |
| C15—C14 | 1.441 (3) | C7—H7C | 0.96 |
| C6—C5 | 1.388 (3) | C18—H18 | 0.93 |
| C9—C8 | 1.522 (3) | | |
| C18—S2A—C15 | 92.58 (10) | C3—C4—C5 | 120.10 (19) |
| C17—C16A—C15 | 101.32 (13) | C3—C4—H4 | 120 |
| C17—C16A—H16A | 129.3 | C5—C4—H4 | 120 |
| C15—C16A—H16A | 129.3 | C4—C3—C2 | 119.49 (19) |
| C14—O1—C13 | 105.85 (14) | C4—C3—H3 | 120.3 |
| C6—O2—C7 | 116.52 (17) | C2—C3—H3 | 120.3 |
| C13—N3—N4 | 112.23 (15) | C1—C2—C3 | 121.48 (19) |
| C13—N3—C12 | 126.27 (17) | C1—C2—H2 | 119.3 |
| N4—N3—C12 | 121.49 (15) | C3—C2—H2 | 119.3 |
| C1—N1—C11 | 115.34 (15) | N2—C10—C11 | 108.46 (16) |
| C1—N1—C8 | 112.16 (15) | N2—C10—H10A | 110 |
| C11—N1—C8 | 110.80 (15) | C11—C10—H10A | 110 |
| C14—N4—N3 | 103.26 (15) | N2—C10—H10B | 110 |
| C12—N2—C9 | 114.55 (15) | C11—C10—H10B | 110 |
| C12—N2—C10 | 116.12 (16) | H10A—C10—H10B | 108.4 |
| C9—N2—C10 | 111.25 (15) | N1—C8—C9 | 110.57 (16) |

| | | | |
|------------------|--------------|----------------|--------------|
| C2—C1—C6 | 118.29 (18) | N1—C8—H8A | 109.5 |
| C2—C1—N1 | 123.40 (17) | C9—C8—H8A | 109.5 |
| C6—C1—N1 | 118.28 (17) | N1—C8—H8B | 109.5 |
| C14—C15—C16A | 123.32 (15) | C9—C8—H8B | 109.5 |
| C14—C15—S2A | 122.32 (14) | H8A—C8—H8B | 108.1 |
| C16A—C15—S2A | 114.33 (12) | C4—C5—C6 | 120.56 (19) |
| N4—C14—O1 | 113.53 (16) | C4—C5—H5 | 119.7 |
| N4—C14—C15 | 129.37 (18) | C6—C5—H5 | 119.7 |
| O1—C14—C15 | 117.09 (16) | N2—C12—N3 | 115.51 (15) |
| N3—C13—O1 | 105.12 (16) | N2—C12—H12A | 108.4 |
| N3—C13—S1 | 132.09 (15) | N3—C12—H12A | 108.4 |
| O1—C13—S1 | 122.77 (14) | N2—C12—H12B | 108.4 |
| O2—C6—C5 | 123.60 (18) | N3—C12—H12B | 108.4 |
| O2—C6—C1 | 116.35 (17) | H12A—C12—H12B | 107.5 |
| C5—C6—C1 | 120.05 (19) | C18—C17—C16A | 117.01 (18) |
| N2—C9—C8 | 109.84 (16) | C18—C17—H17 | 121.5 |
| N2—C9—H9A | 109.7 | C16A—C17—H17 | 121.5 |
| C8—C9—H9A | 109.7 | O2—C7—H7A | 109.5 |
| N2—C9—H9B | 109.7 | O2—C7—H7B | 109.5 |
| C8—C9—H9B | 109.7 | H7A—C7—H7B | 109.5 |
| H9A—C9—H9B | 108.2 | O2—C7—H7C | 109.5 |
| N1—C11—C10 | 109.26 (15) | H7A—C7—H7C | 109.5 |
| N1—C11—H11A | 109.8 | H7B—C7—H7C | 109.5 |
| C10—C11—H11A | 109.8 | C17—C18—S2A | 114.76 (17) |
| N1—C11—H11B | 109.8 | C17—C18—H18 | 122.6 |
| C10—C11—H11B | 109.8 | S2A—C18—H18 | 122.6 |
| H11A—C11—H11B | 108.3 | | |
| | | | |
| C13—N3—N4—C14 | -0.5 (2) | N1—C1—C6—O2 | 0.7 (3) |
| C12—N3—N4—C14 | 178.38 (15) | C2—C1—C6—C5 | 1.5 (3) |
| C11—N1—C1—C2 | 22.5 (3) | N1—C1—C6—C5 | 179.97 (18) |
| C8—N1—C1—C2 | -105.7 (2) | C12—N2—C9—C8 | -167.82 (16) |
| C11—N1—C1—C6 | -155.90 (18) | C10—N2—C9—C8 | 58.0 (2) |
| C8—N1—C1—C6 | 76.0 (2) | C1—N1—C11—C10 | 171.49 (16) |
| C17—C16A—C15—C14 | -177.76 (16) | C8—N1—C11—C10 | -59.7 (2) |
| C17—C16A—C15—S2A | 0.16 (15) | C5—C4—C3—C2 | 1.1 (3) |
| C18—S2A—C15—C14 | 177.79 (16) | C6—C1—C2—C3 | -0.5 (3) |
| C18—S2A—C15—C16A | -0.16 (13) | N1—C1—C2—C3 | -178.91 (19) |
| N3—N4—C14—O1 | 0.53 (19) | C4—C3—C2—C1 | -0.8 (3) |
| N3—N4—C14—C15 | -178.64 (17) | C12—N2—C10—C11 | 165.92 (15) |
| C13—O1—C14—N4 | -0.4 (2) | C9—N2—C10—C11 | -60.7 (2) |
| C13—O1—C14—C15 | 178.90 (15) | N1—C11—C10—N2 | 60.7 (2) |
| C16A—C15—C14—N4 | -178.37 (16) | C1—N1—C8—C9 | -172.53 (16) |
| S2A—C15—C14—N4 | 3.9 (3) | C11—N1—C8—C9 | 57.0 (2) |
| C16A—C15—C14—O1 | 2.5 (2) | N2—C9—C8—N1 | -55.2 (2) |
| S2A—C15—C14—O1 | -175.28 (13) | C3—C4—C5—C6 | -0.2 (3) |
| N4—N3—C13—O1 | 0.29 (19) | O2—C6—C5—C4 | 178.1 (2) |
| C12—N3—C13—O1 | -178.53 (15) | C1—C6—C5—C4 | -1.2 (3) |

| | | | |
|---------------|--------------|------------------|-----------|
| N4—N3—C13—S1 | -178.25 (15) | C9—N2—C12—N3 | -52.8 (2) |
| C12—N3—C13—S1 | 2.9 (3) | C10—N2—C12—N3 | 79.1 (2) |
| C14—O1—C13—N3 | 0.03 (18) | C13—N3—C12—N2 | 110.8 (2) |
| C14—O1—C13—S1 | 178.74 (13) | N4—N3—C12—N2 | -67.9 (2) |
| C7—O2—C6—C5 | -24.0 (3) | C15—C16A—C17—C18 | -0.1 (2) |
| C7—O2—C6—C1 | 155.31 (19) | C16A—C17—C18—S2A | 0.0 (2) |
| C2—C1—C6—O2 | -177.78 (18) | C15—S2A—C18—C17 | 0.11 (17) |

Hydrogen-bond geometry (Å, °)

Cg1 is the centroid of the S2A/C15/C16A/C17/C18 ring.

| <i>D</i> —H \cdots <i>A</i> | <i>D</i> —H | H \cdots <i>A</i> | <i>D</i> \cdots <i>A</i> | <i>D</i> —H \cdots <i>A</i> |
|-----------------------------------|-------------|---------------------|----------------------------|-------------------------------|
| C12—H12A \cdots S1 ⁱ | 0.97 | 2.95 | 3.860 (2) | 157 |
| C17—H17 \cdots O1 ⁱⁱ | 0.93 | 2.69 | 3.475 (2) | 143 |
| C5—H5 \cdots Cg1 ⁱⁱⁱ | 0.93 | 2.95 | 3.660 (2) | 135 |

Symmetry codes: (i) $x, -y+1/2, z-1/2$; (ii) $-x+2, y+1/2, -z+5/2$; (iii) $-x+1, -y+1, -z+2$.