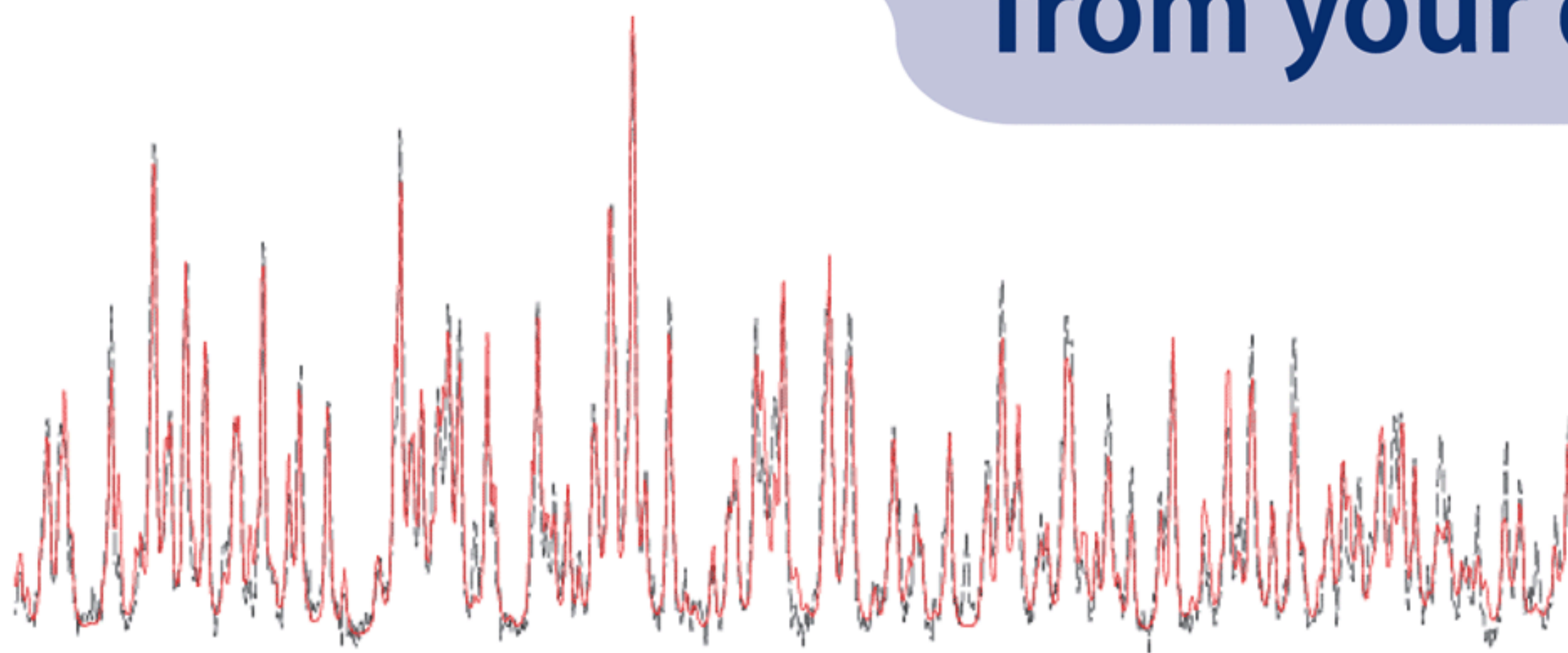


# Getting the best data from your crystals!

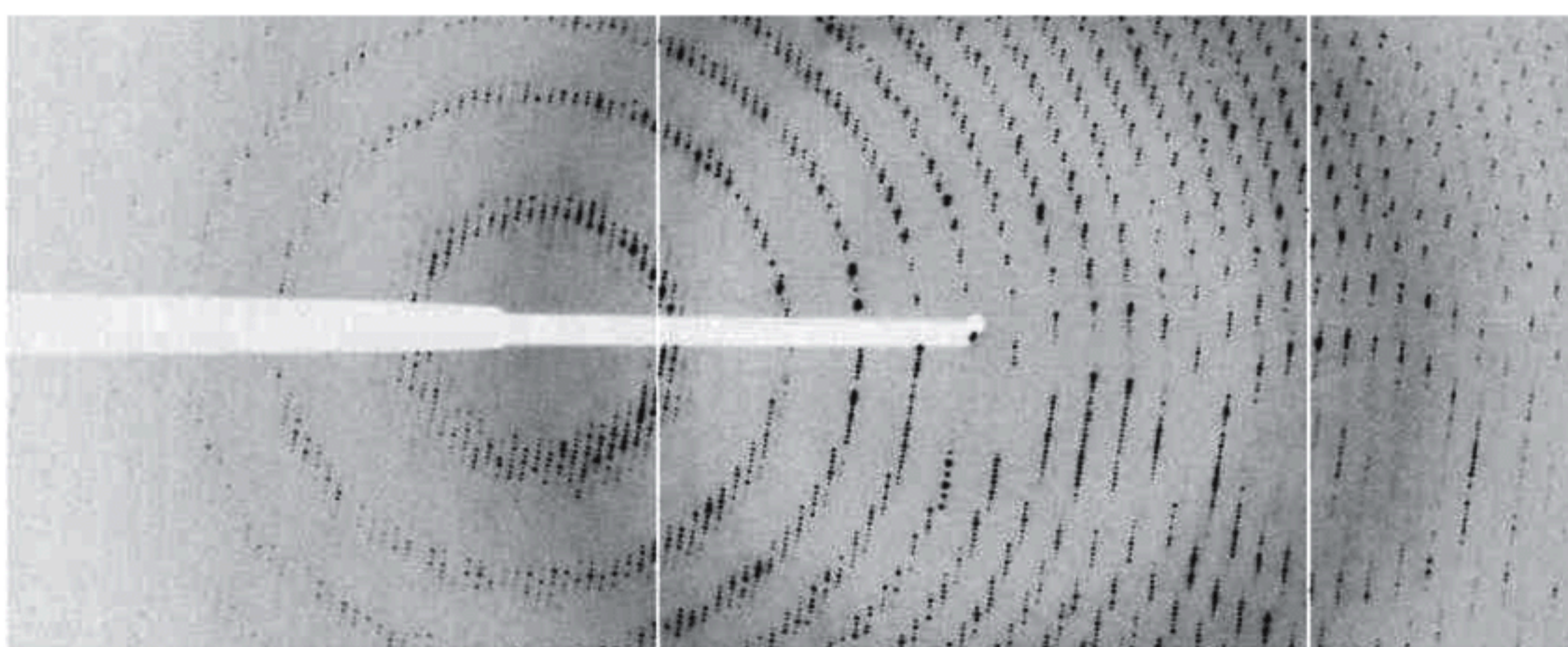


## High-Resolution Powder Diffraction:

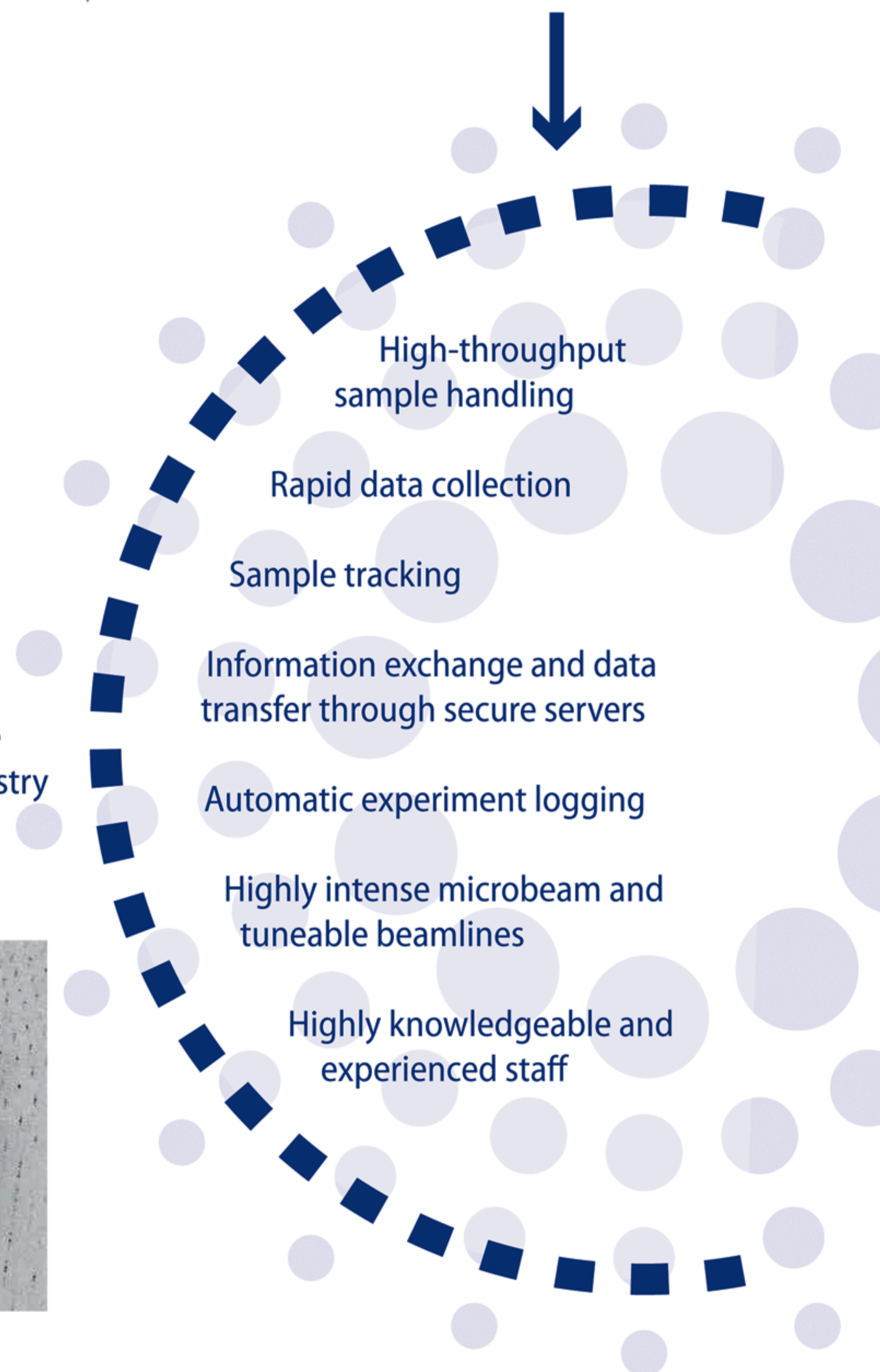
- Mail-in data collection service for industry
- Resolving power second-to-none
- Wide range of sample environments
- Expert scientific team

## Macromolecular Crystallography across six state-of-the-art beamlines:

- Via the proprietary mail-in MXpress™ data collection service
- From your own lab via Remote Access for academics & industry
- Perform the experiment yourself at the ESRF
- Services customised to your unique needs



Academic and industry  
benefit from our  
advanced user-friendly  
technologies



[www.esrf.fr/Industry](http://www.esrf.fr/Industry)

[industry@esrf.fr](mailto:industry@esrf.fr)

Ed Mitchell email: [mitchell@esrf.fr](mailto:mitchell@esrf.fr) Tel. +33 476 882 664

